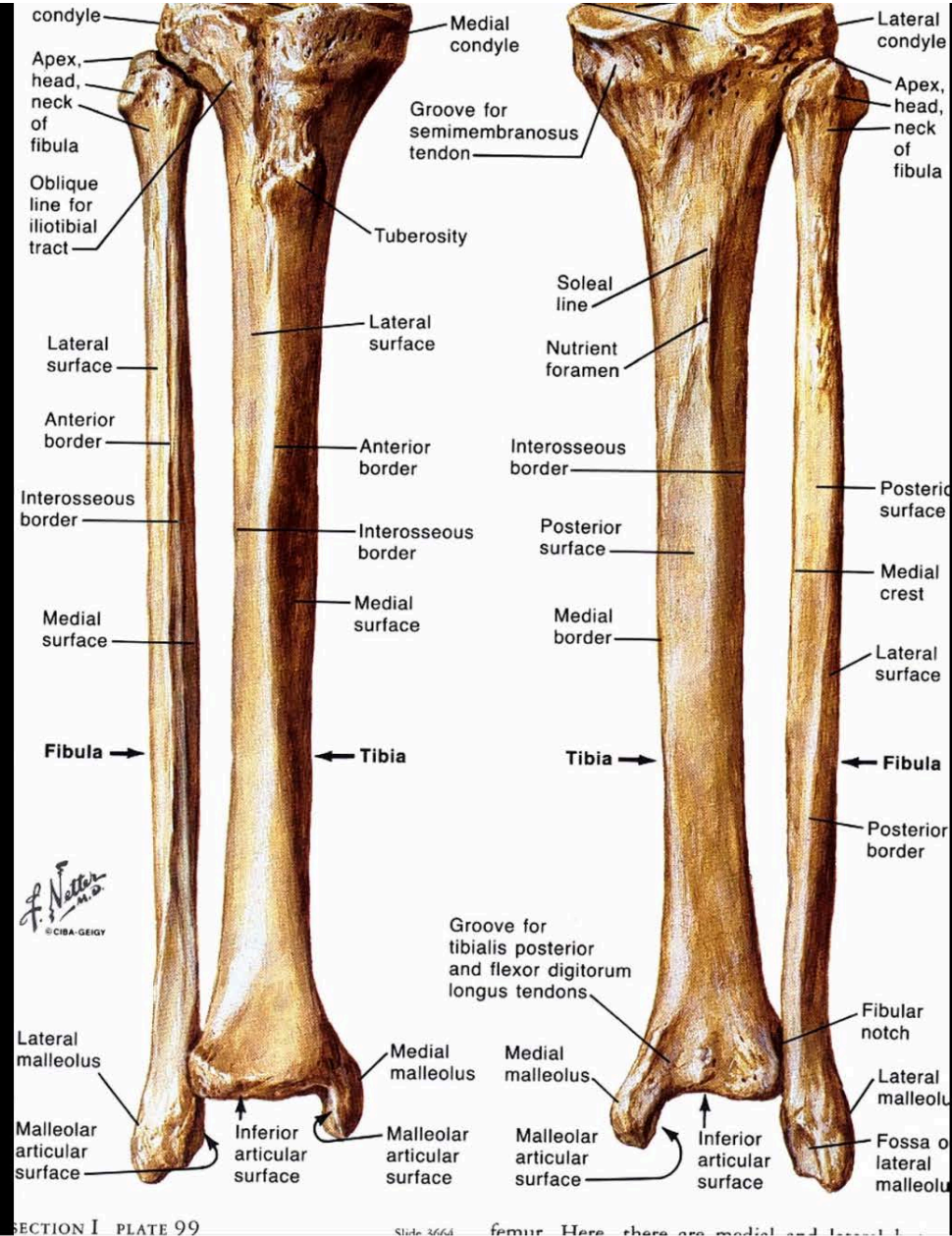
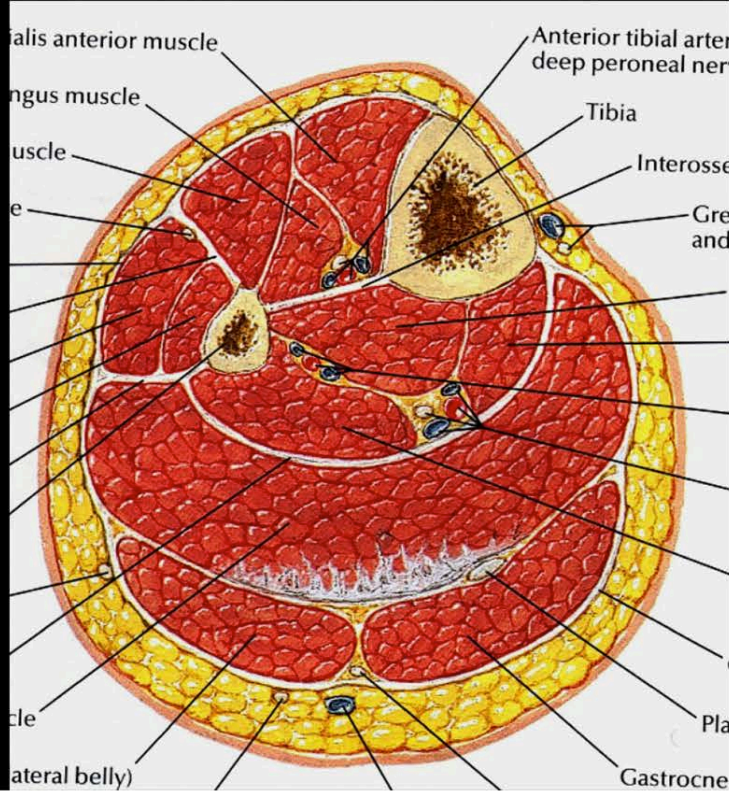
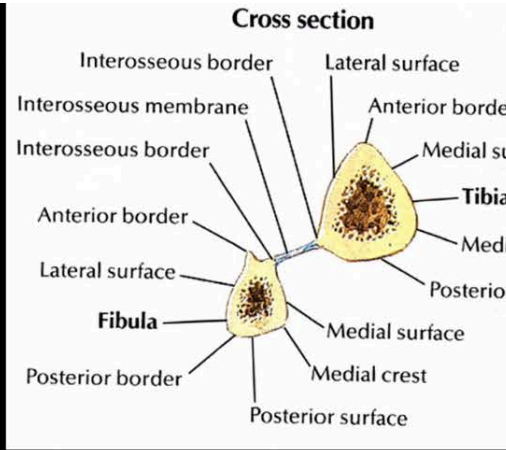


Notions élémentaires d'imagerie de la jambe

2016

Merci au Pr B Vande berg pour l'iconographie

Jambe

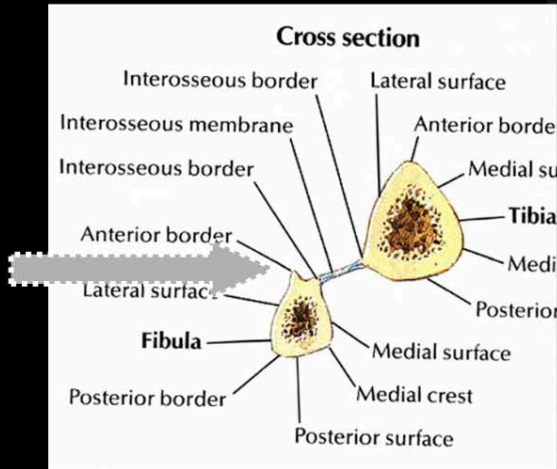
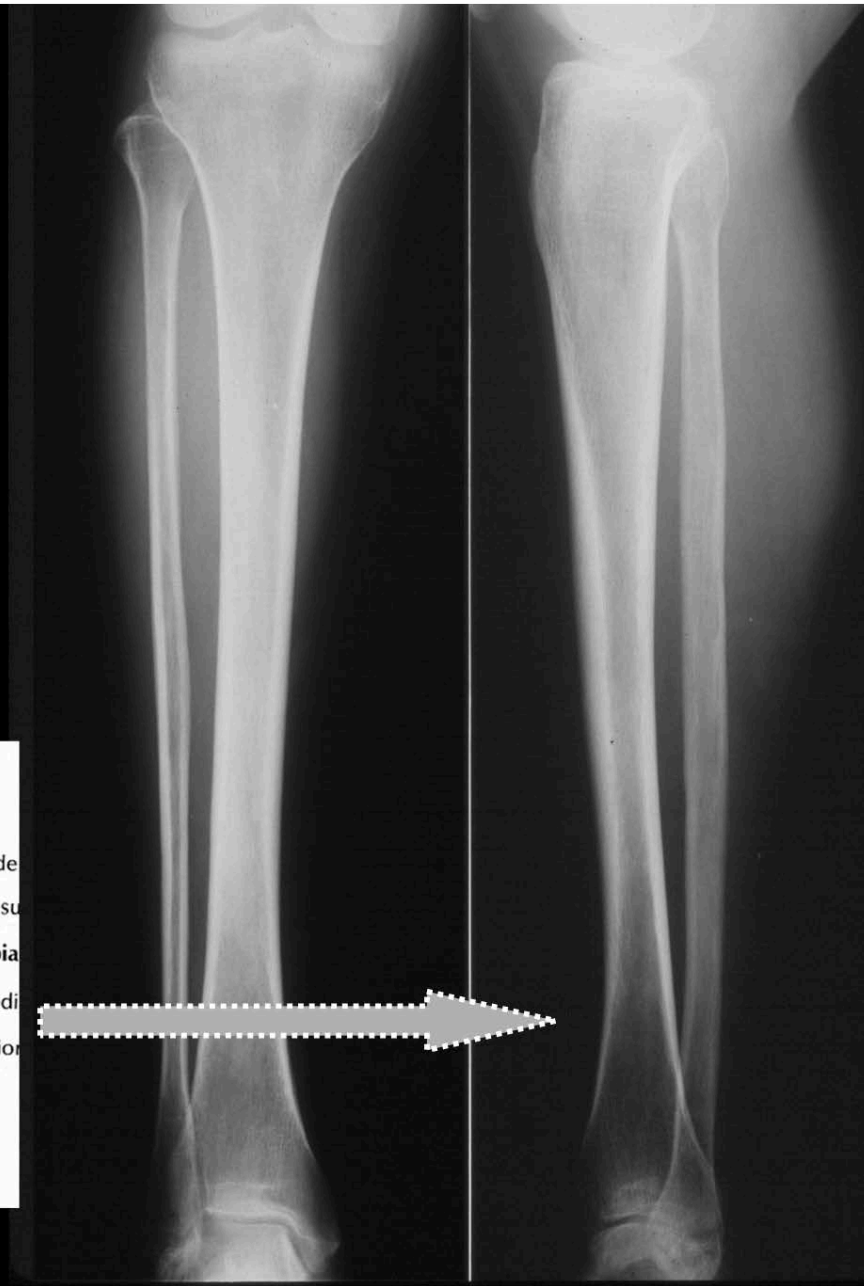


Jambe

Face

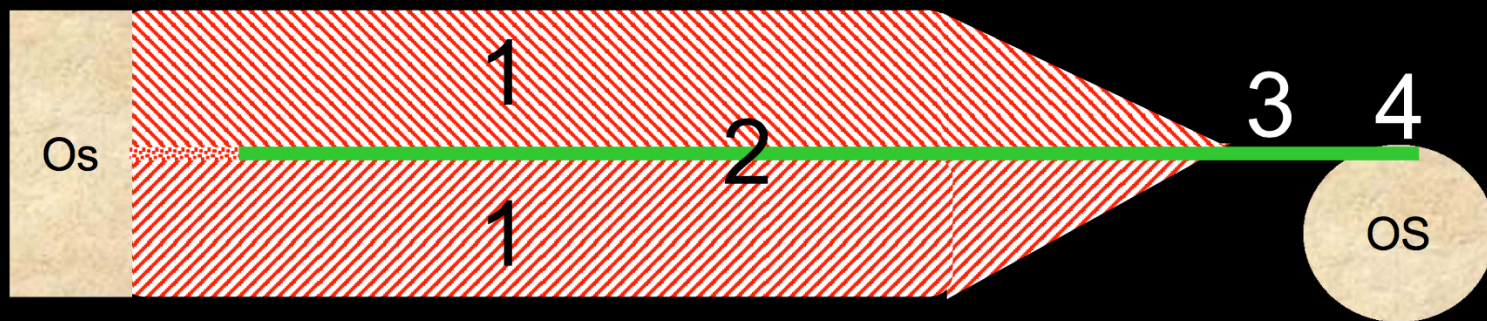


Profil



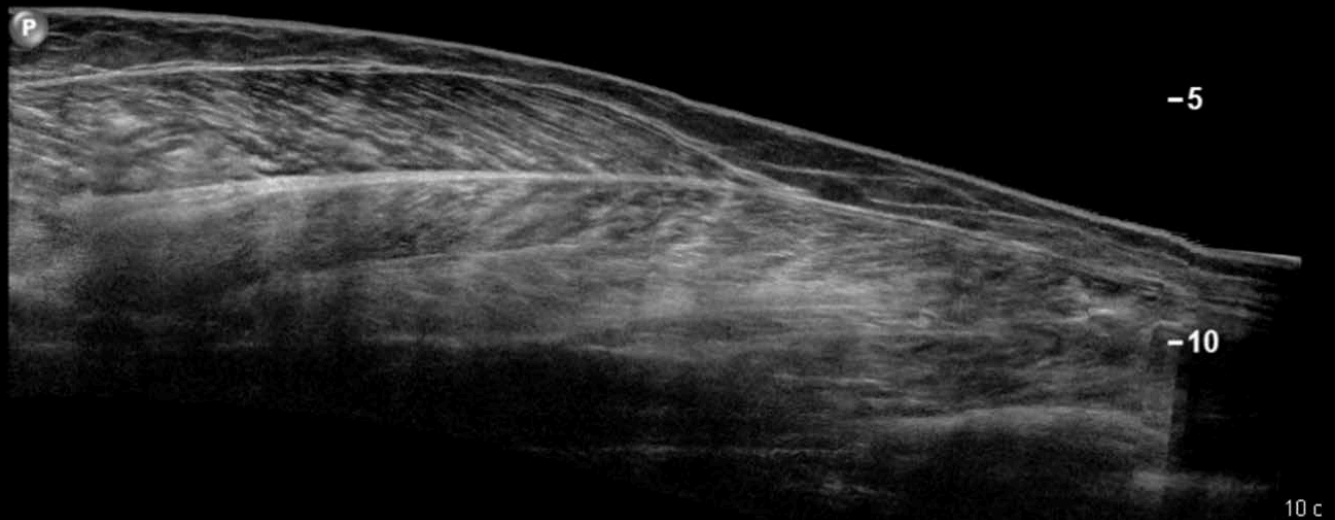
Anatomie musculaire

1. **Fibre musculaire**: composante motrice
2. **Aponévrose**: squelette fibreux musculaire (central- périphérique)
3. **Tendon**: structure fibreuse prolongeant l'aponévrose
4. **Enthèse**: jonction tendino-osseuse



Coupe longitudinale du mollet

Normal



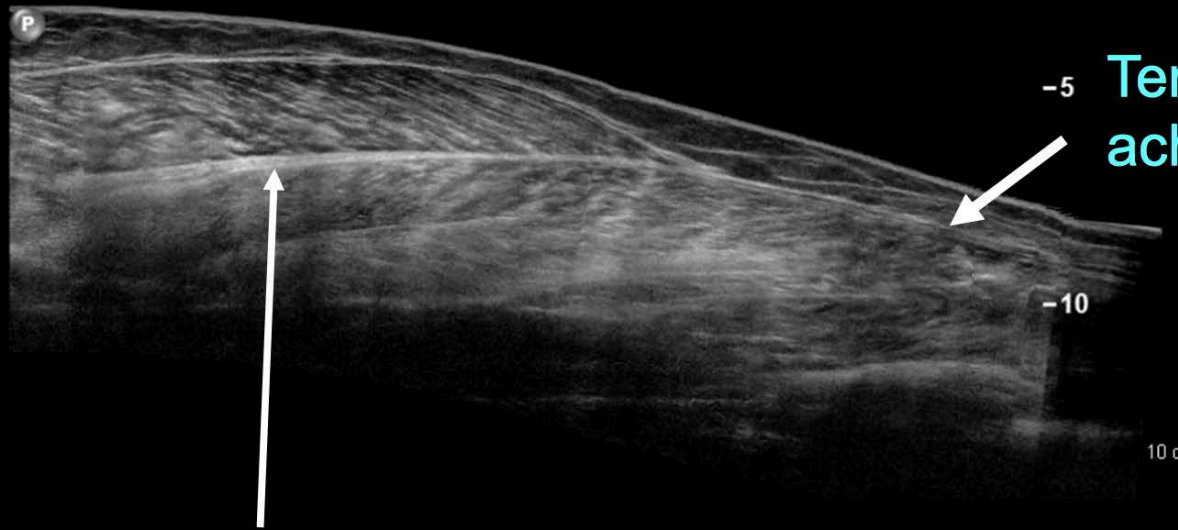
Coupe longitudinale du mollet

Cranial

Normal Caudal

M. Gastrocnémien
médial

M. soléaire



-0
-5 Tendon
achille

-10

10 c

Aponévrose entre le gastrocnémien médial
et le soléaire