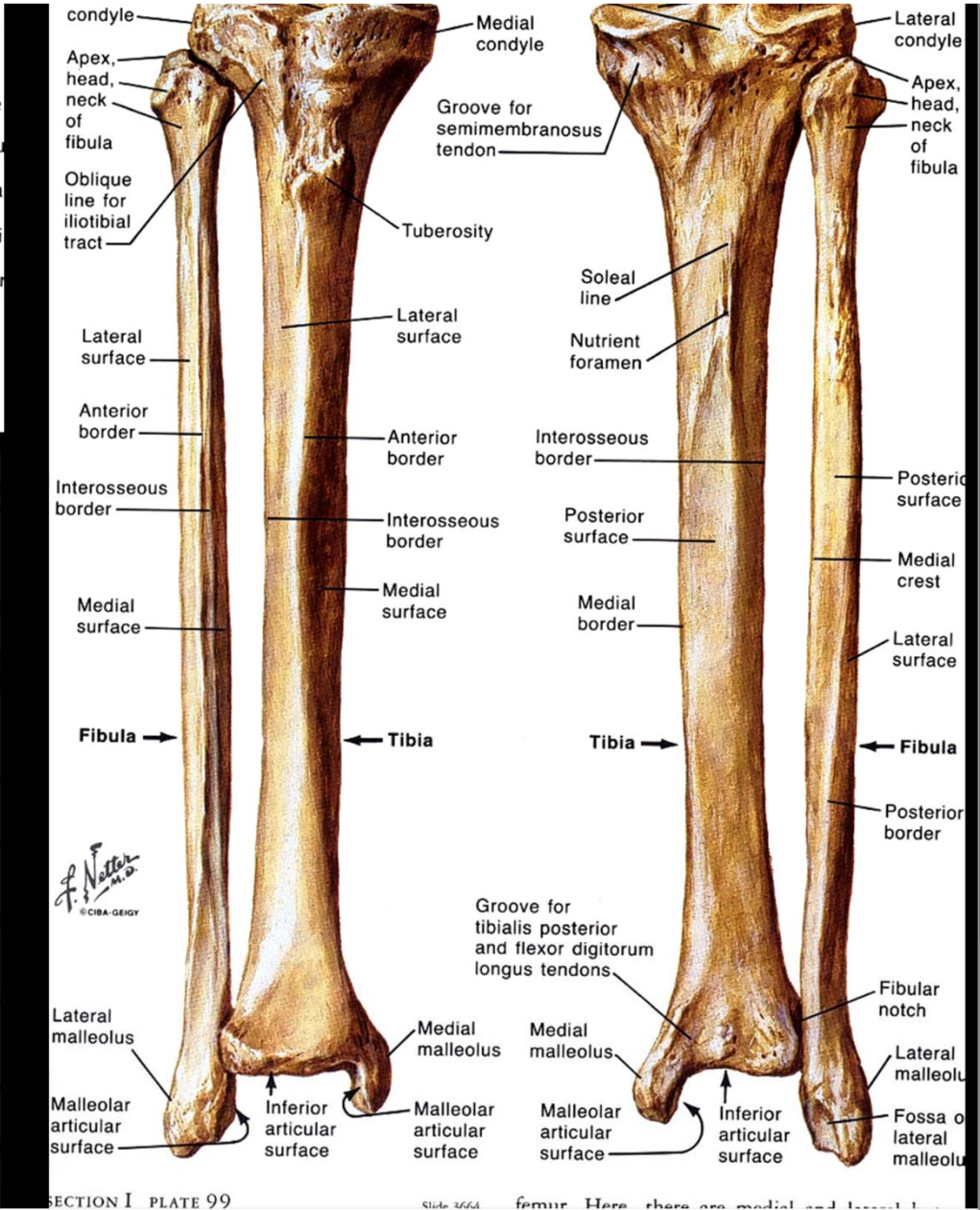
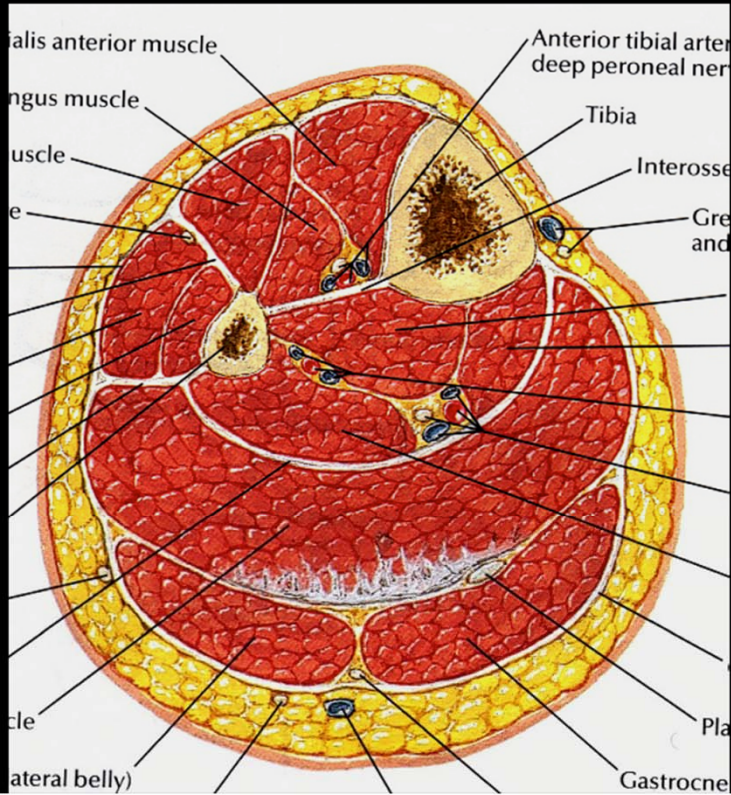
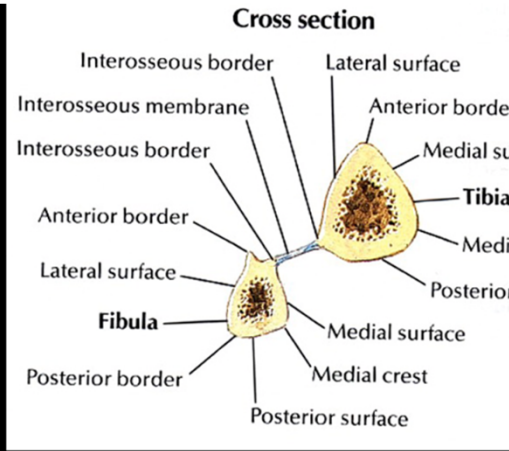


Notions élémentaires d'imagerie de la jambe

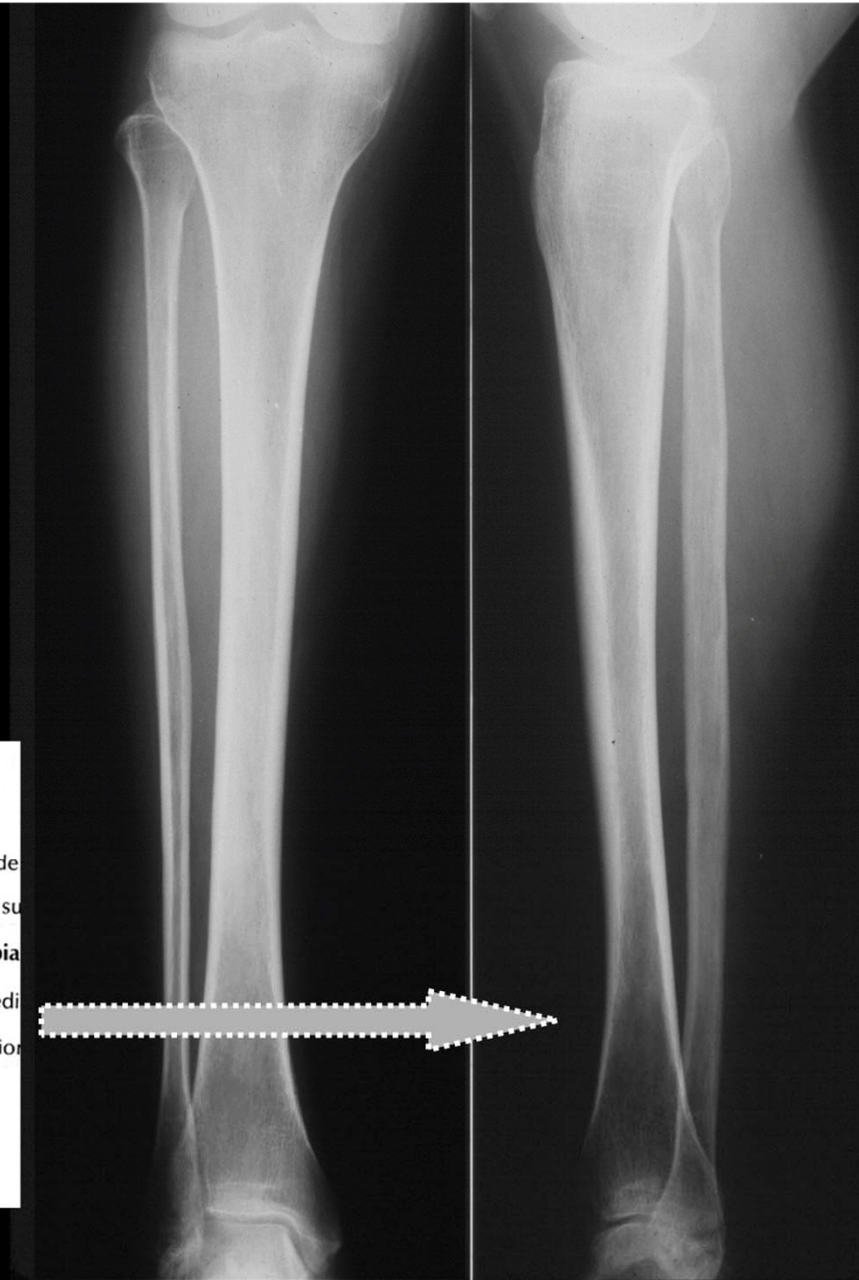
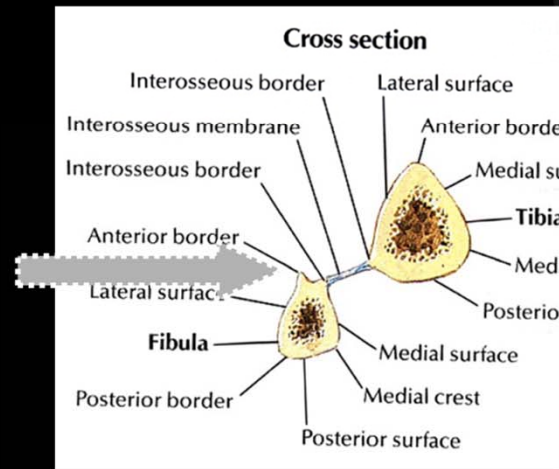
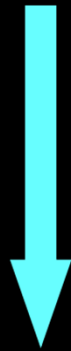
2019

Jambe



Jambe

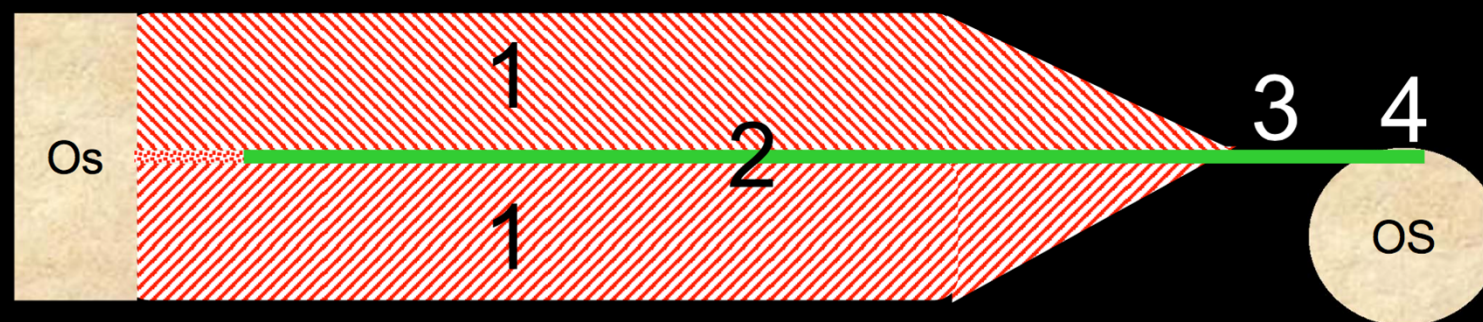
Face



Profil

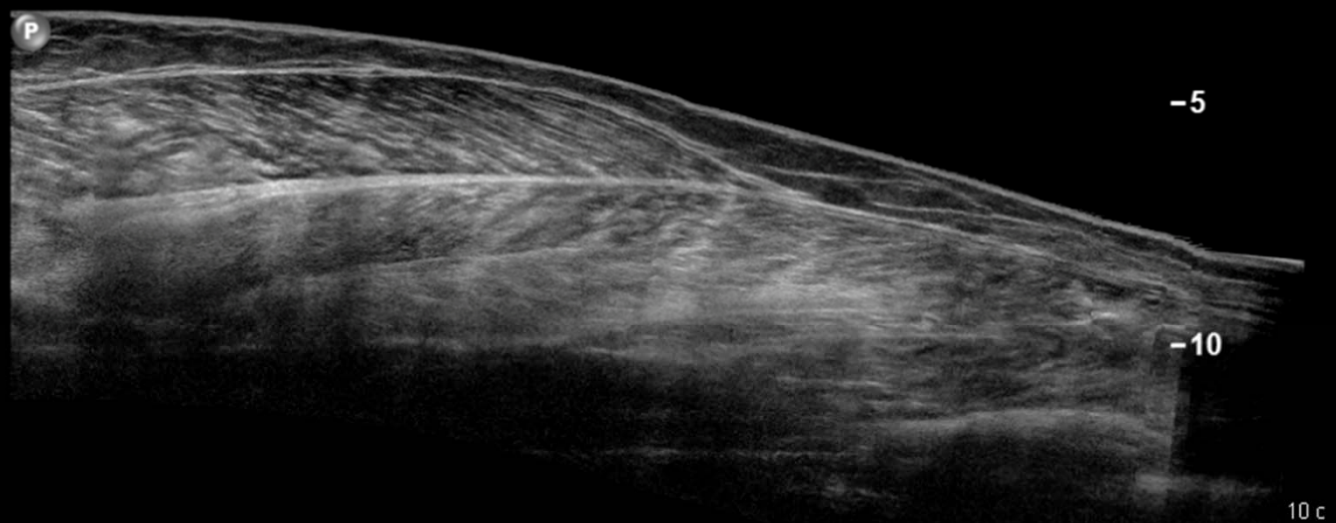
Anatomie musculaire

1. **Fibre musculaire**: composante motrice
2. **Aponévrose**: squelette fibreux musculaire (central- périphérique)
3. **Tendon**: structure fibreuse prolongeant l'aponévrose
4. **Enthèse**: jonction tendino-osseuse



Coupe longitudinale du mollet

Normal



Coupe longitudinale du mollet

Cranial

Normal Caudal

M. Gastrocnémien
médial

M. soléaire

-5 Tendon
achille

-10

10 c

Aponévrose entre le gastrocnémien médial
et le soléaire

