



 UCLouvain

Secteur des Sciences de la santé

Faculté de Médecine

Cours WMDS ANAT1311

Année académique 2020-2021

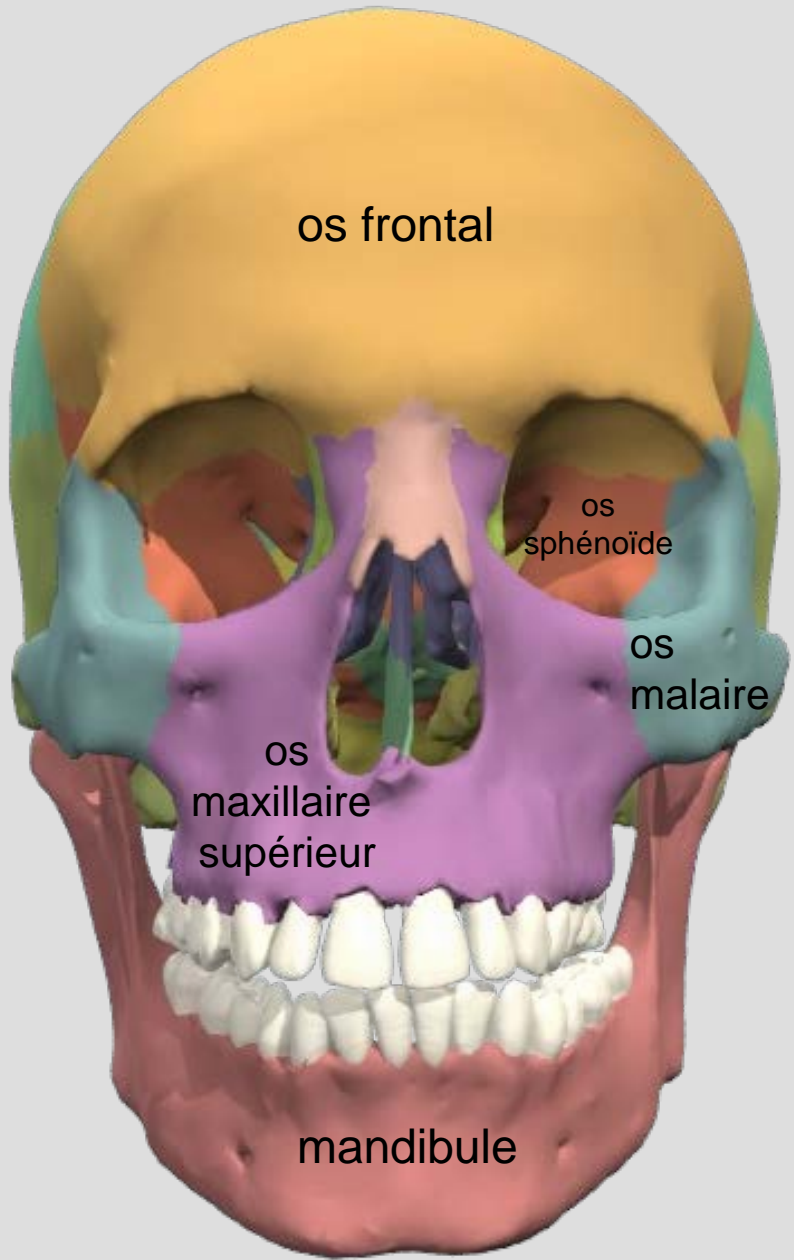
18 novembre 2020

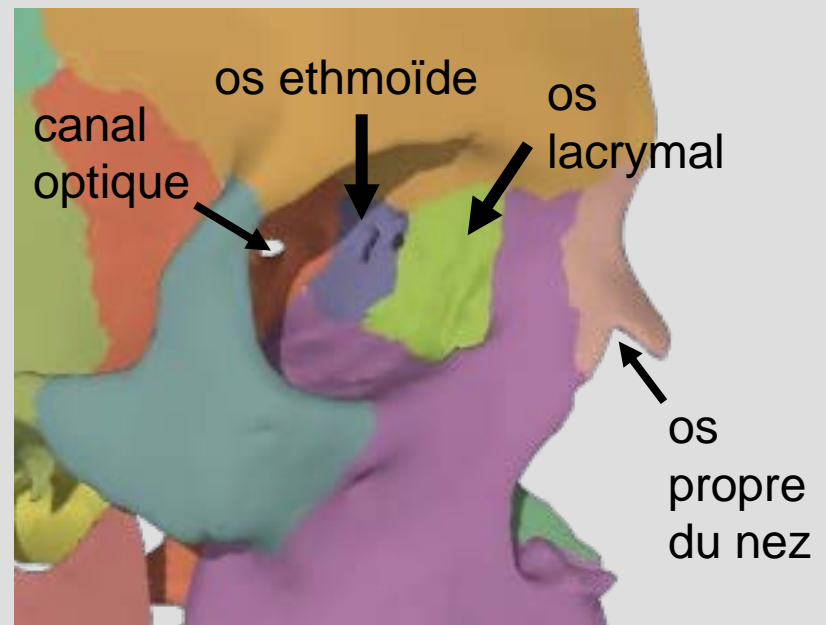
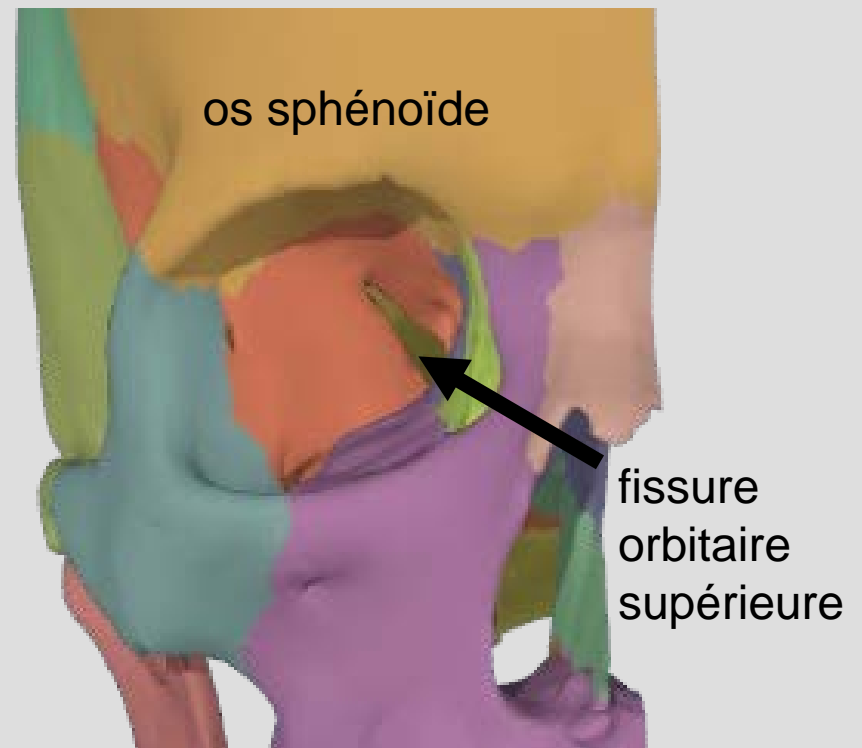
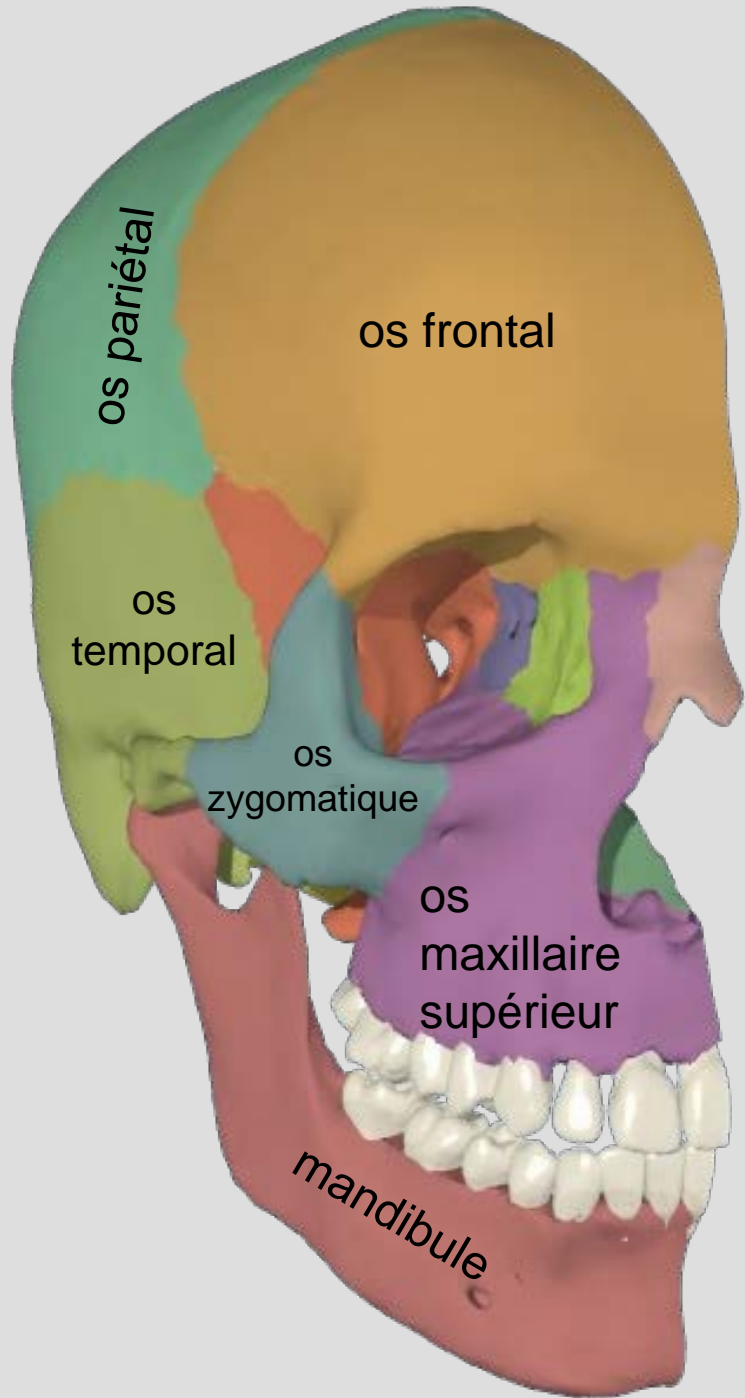
Neuroanatomie radiologique

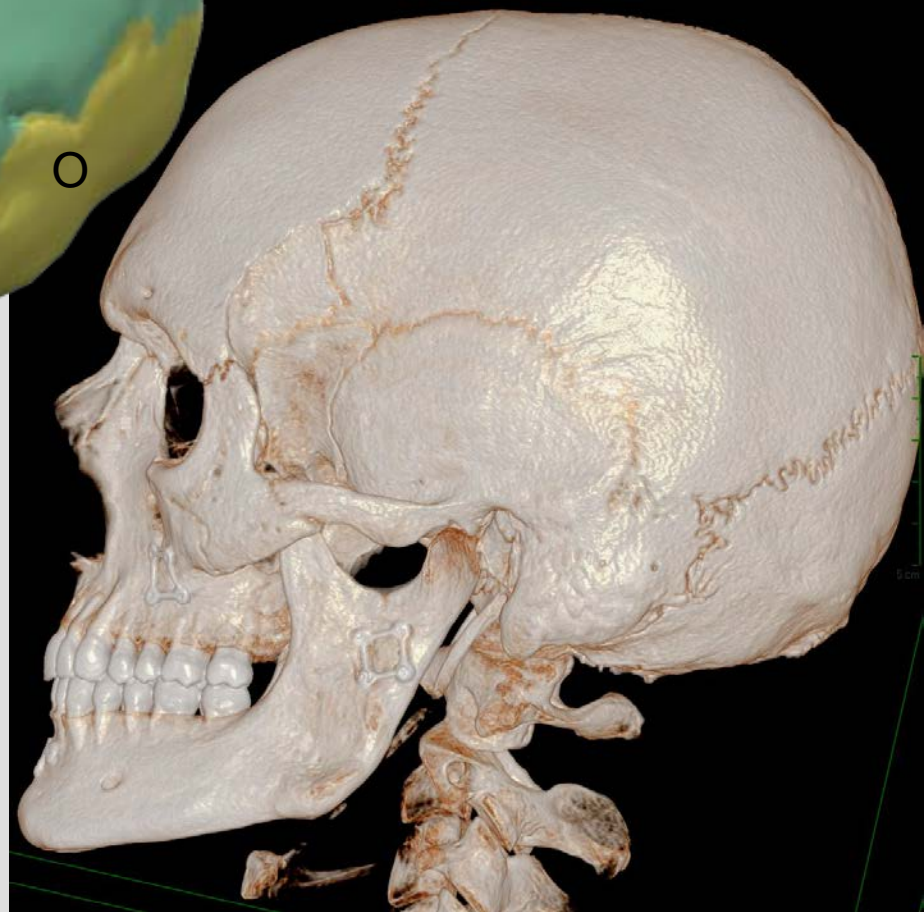
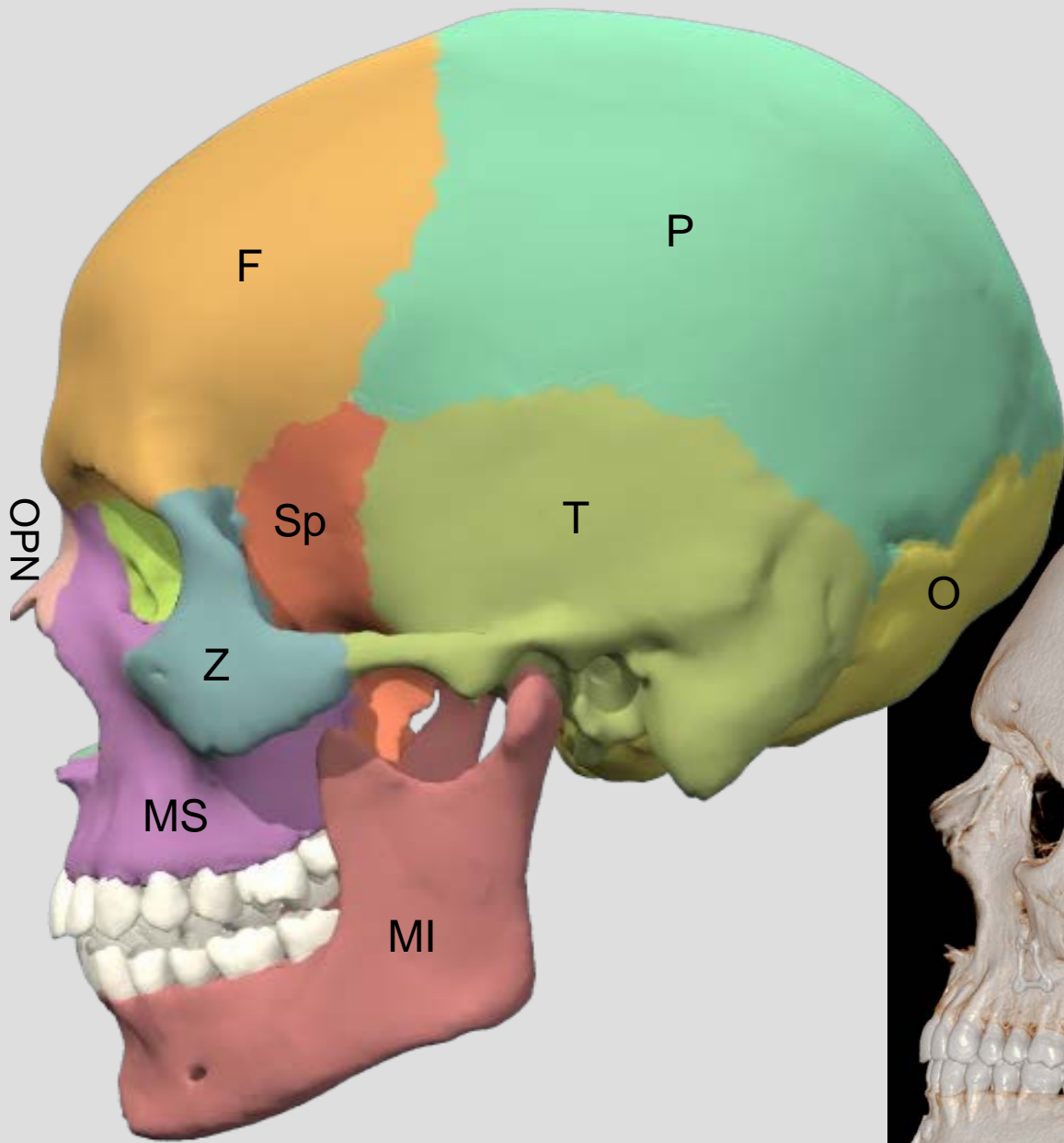
Pr. Thierry DUPREZ

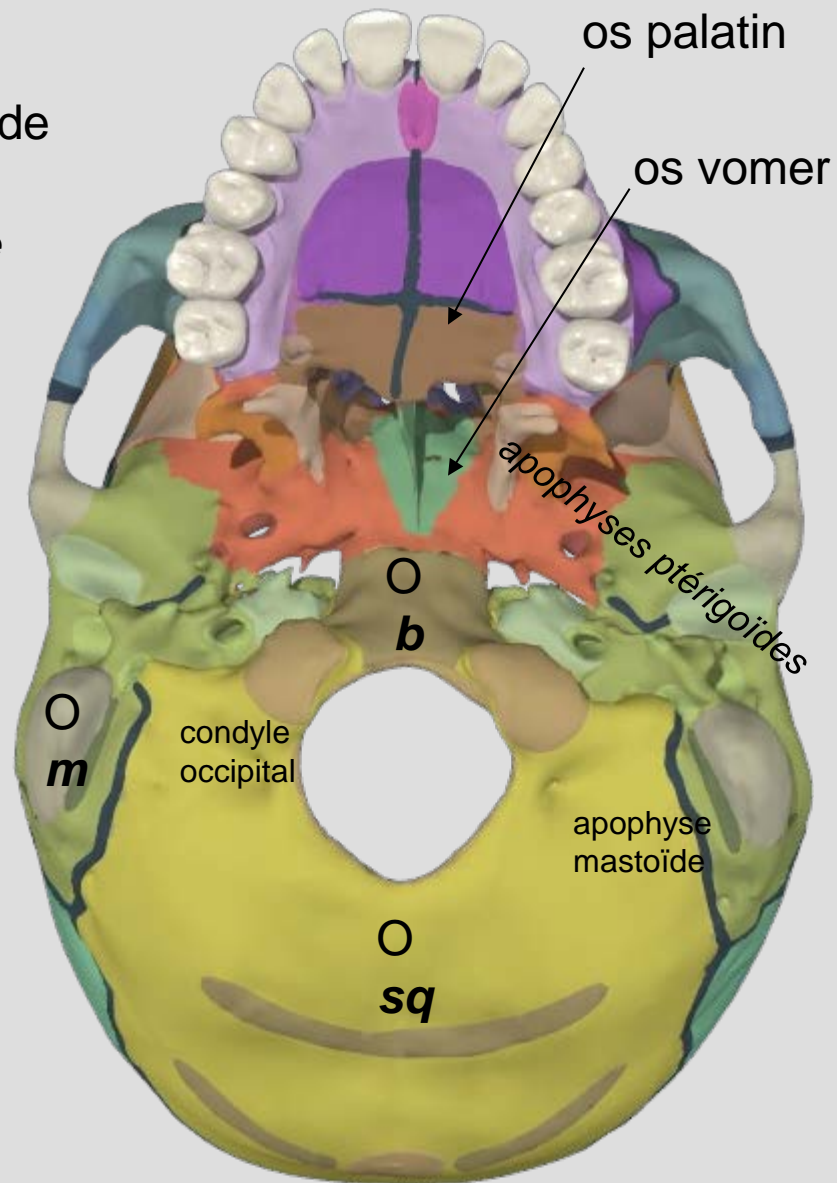
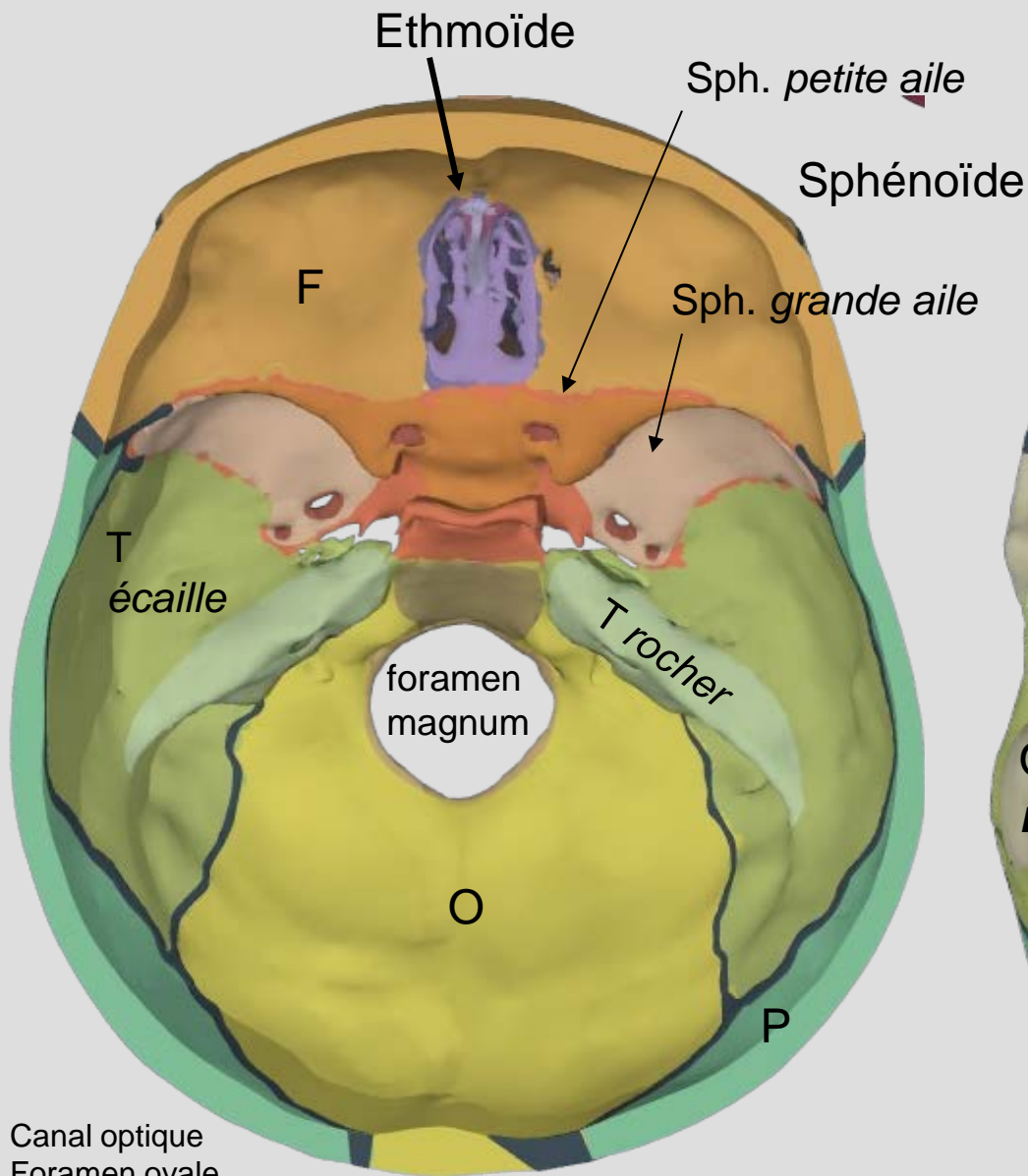


Module 1: crâne et massif facial

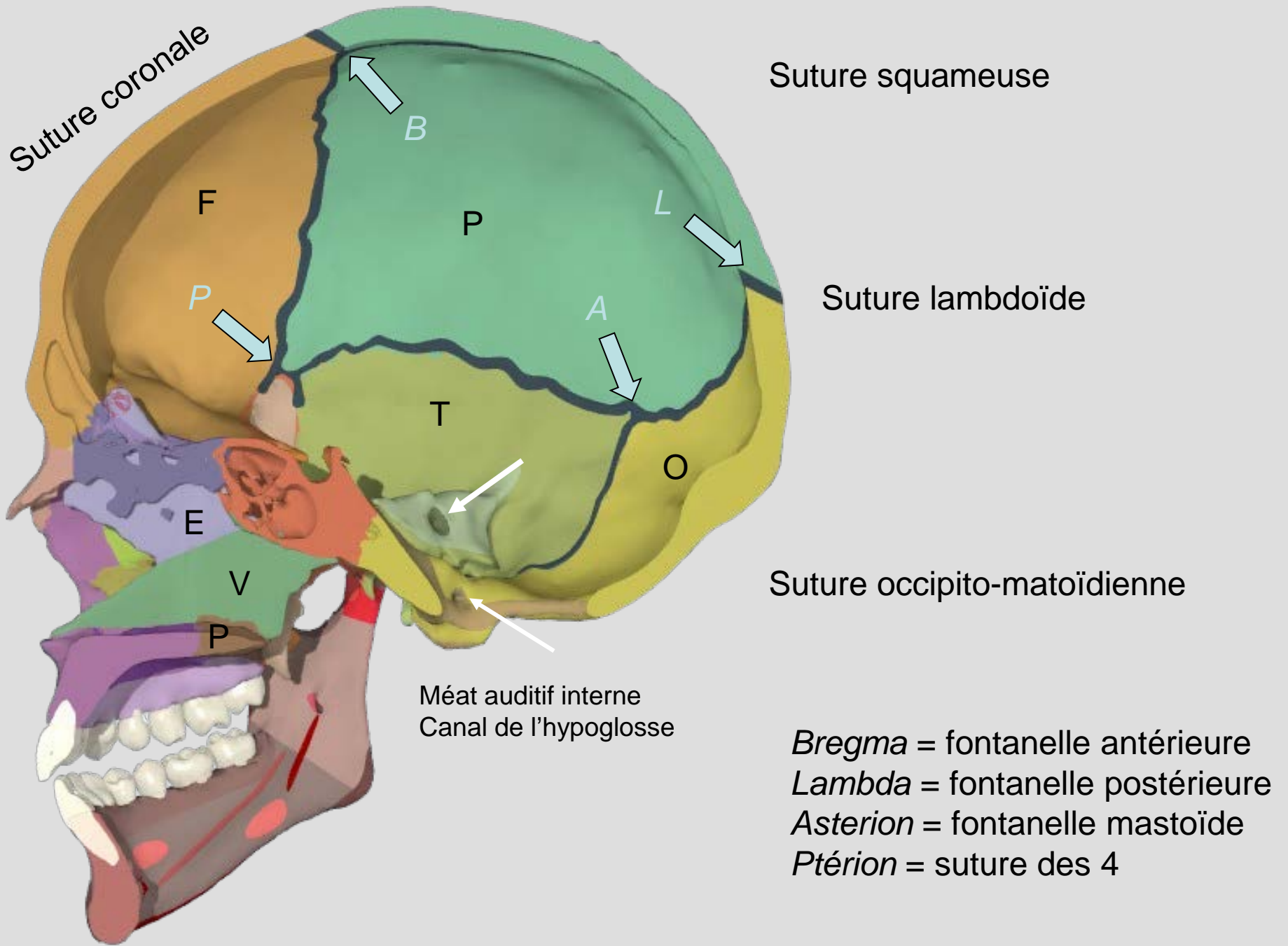








- Canal optique
- Foramen ovale
- Foramen épineux
- Canal carotidien
- Méat auditif interne
- Trou déchiré postérieur
- Lame criblée de l'ethmoïde



Suture coronale

Suture squameuse

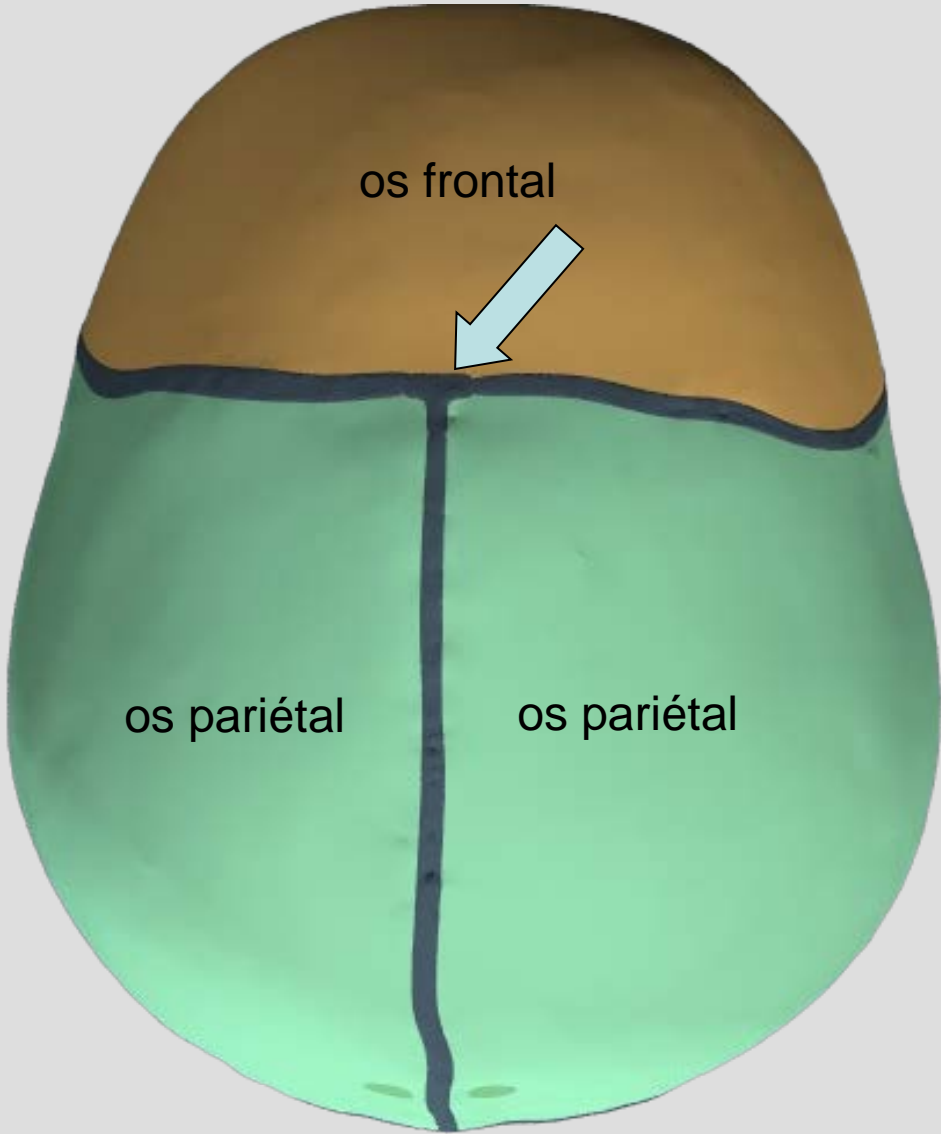
Suture lambdoïde

Suture occipito-matoïdienne

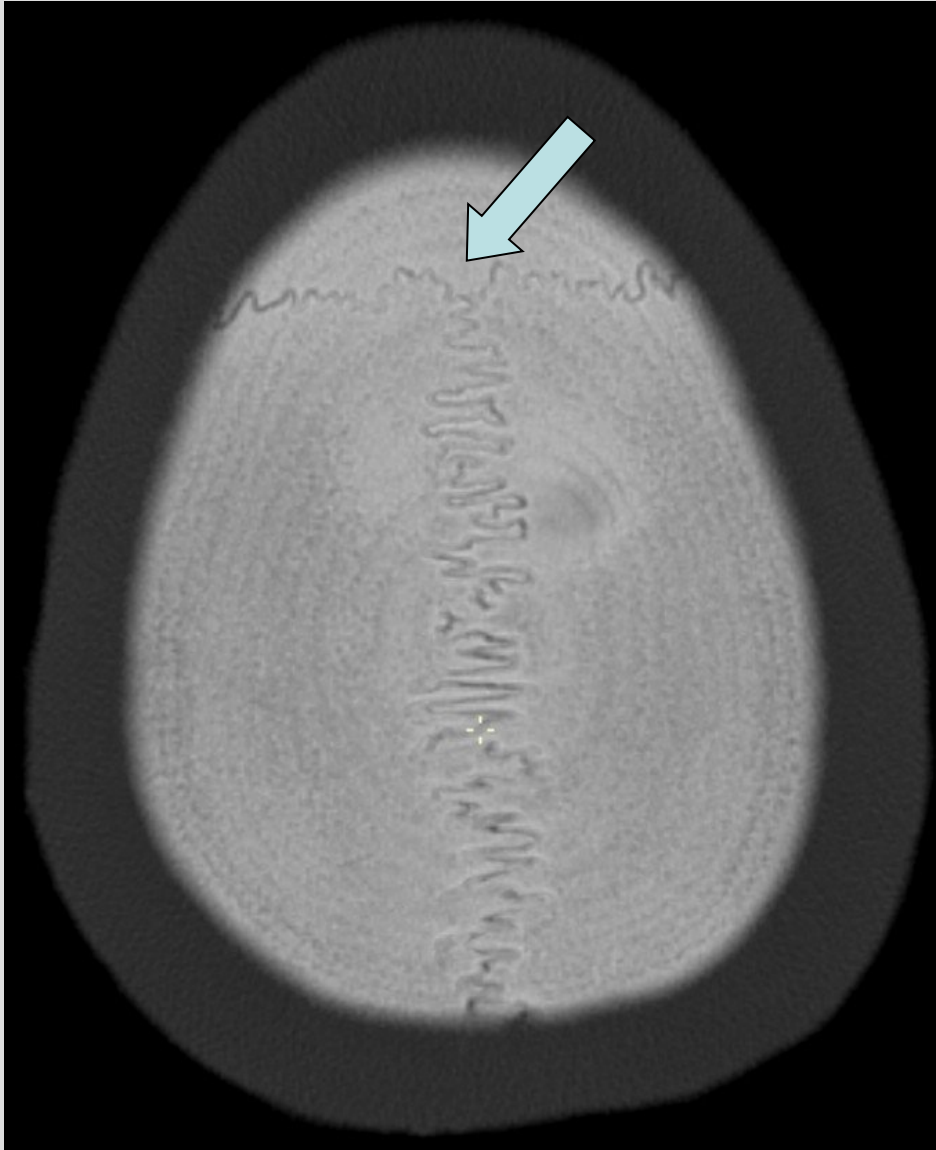
Méat auditif interne
Canal de l'hypoglosse

Bregma = fontanelle antérieure
Lambda = fontanelle postérieure
Asterion = fontanelle mastoïde
Ptérion = suture des 4

Bregma (fontanelle antérieure)

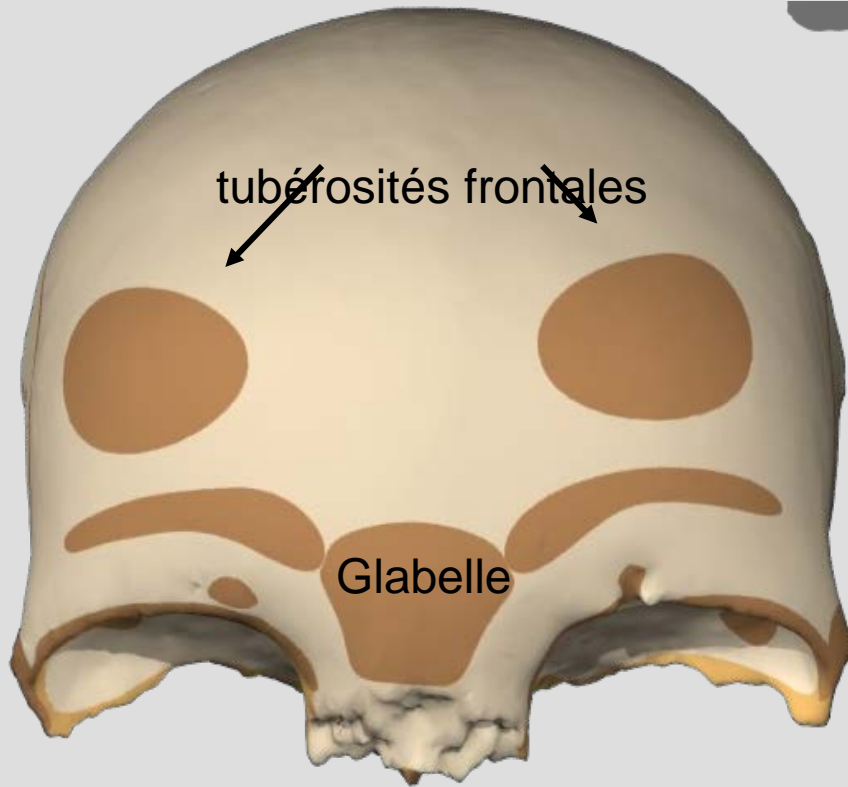


'calvaire'



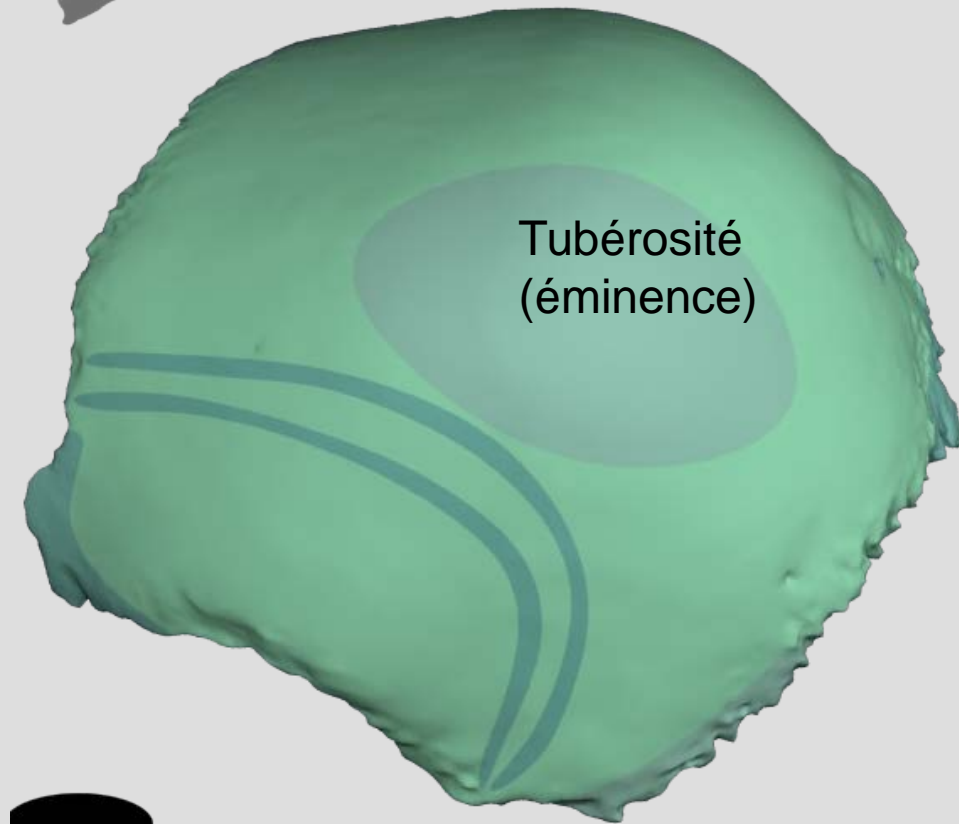
OS FRONTAL

Vue antérieure



OS PARIÉTAL

Profil externe



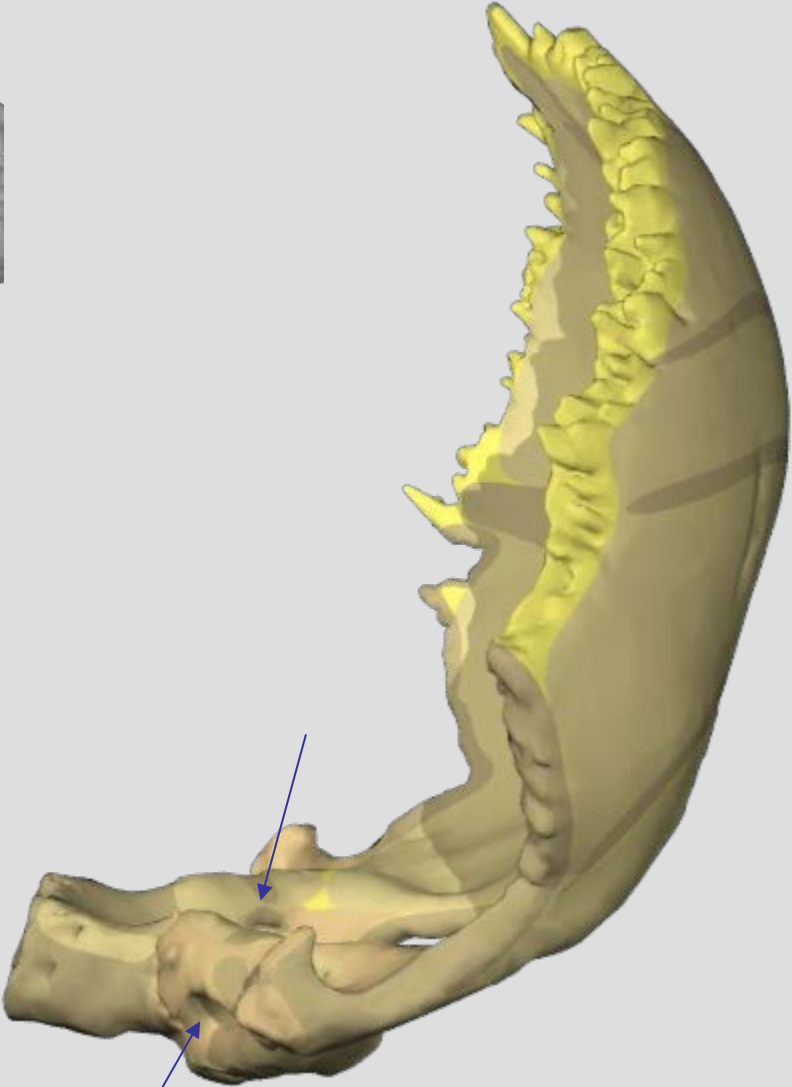
OS OCCIPITAL

Partie basilaire

Partie condylienne

Canal condylien postérieur

Partie squameuse



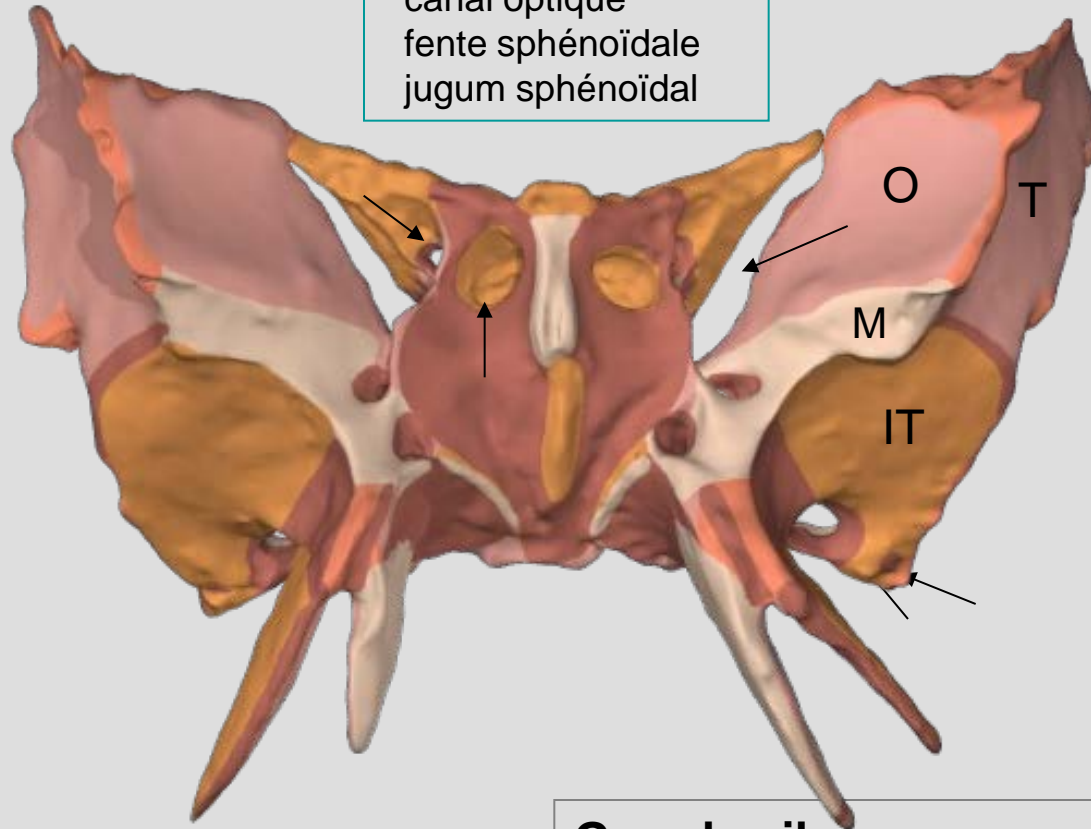
Canal condylien antérieur (de l'hypoglosse - XII)

OS SPHENOÏDE

Petite aile

clinoïdes antérieures
canal optique
fente sphénoïdale
jugum sphénoïdal

Vue antérieure

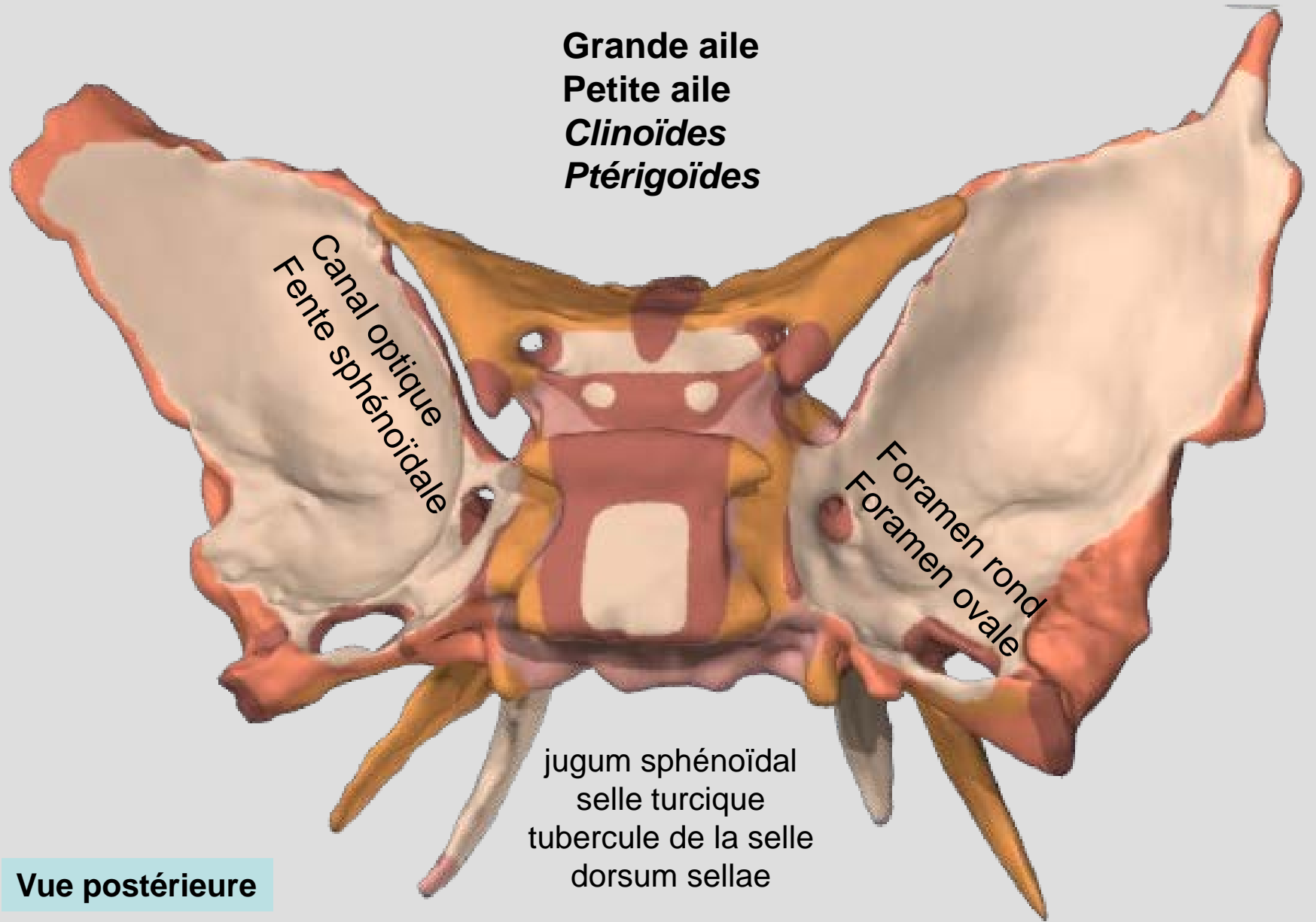


Grande aile

surface orbitaire
surface temporale
surface infra-temporale
surface articulaire maxillaire sup

- Canal optique
- Fente sphénoïdale
- Trou rond (V2)
- Trou ovale (V3)
- Canal ptérigoïdien
- Foramen épineux
- Récessus sphéno-ethmoïdaux





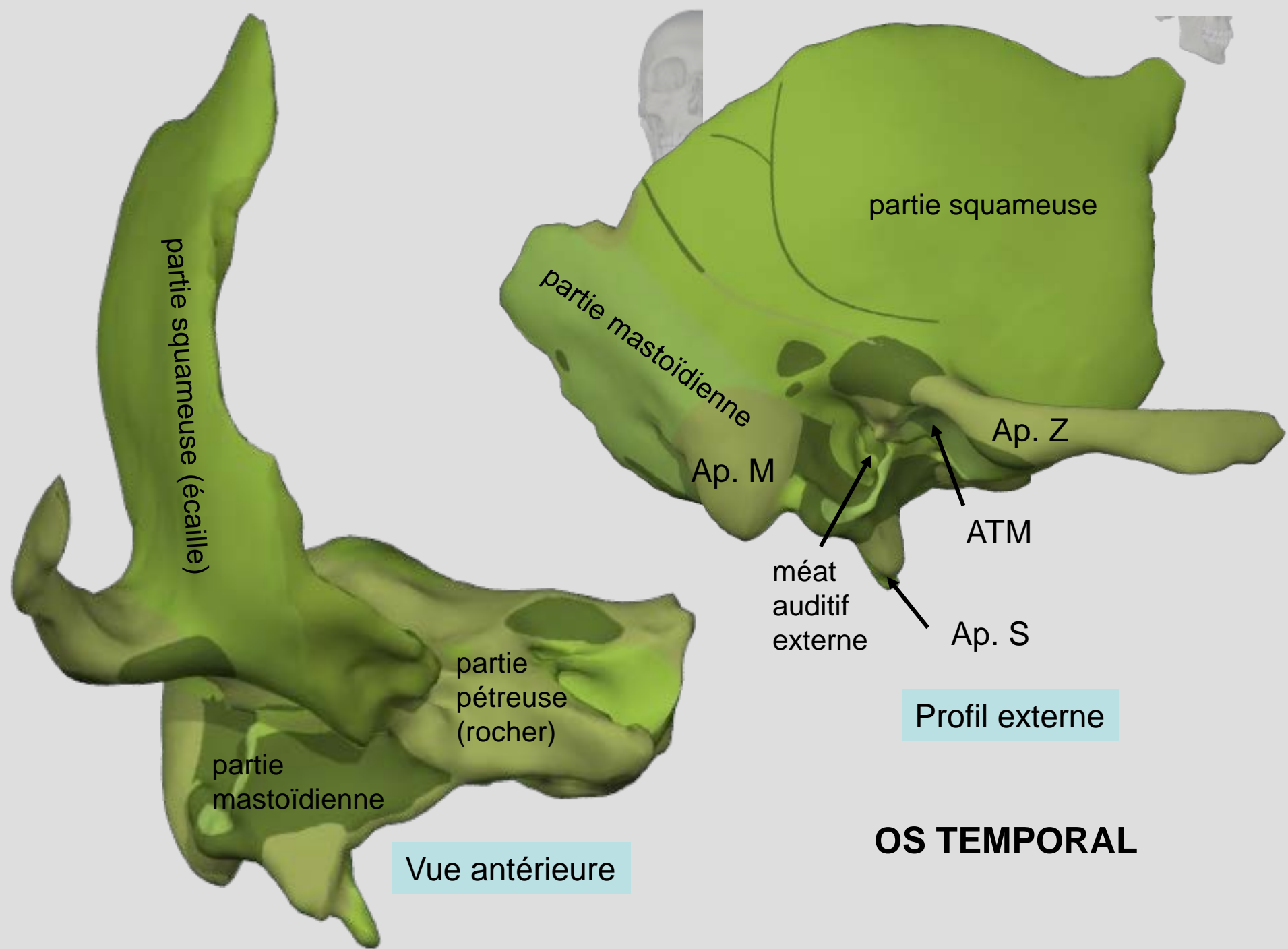
Grande aile
Petite aile
Cliñoïdes
Ptérigoïdes

Canal optique
Fente sphénoïdale

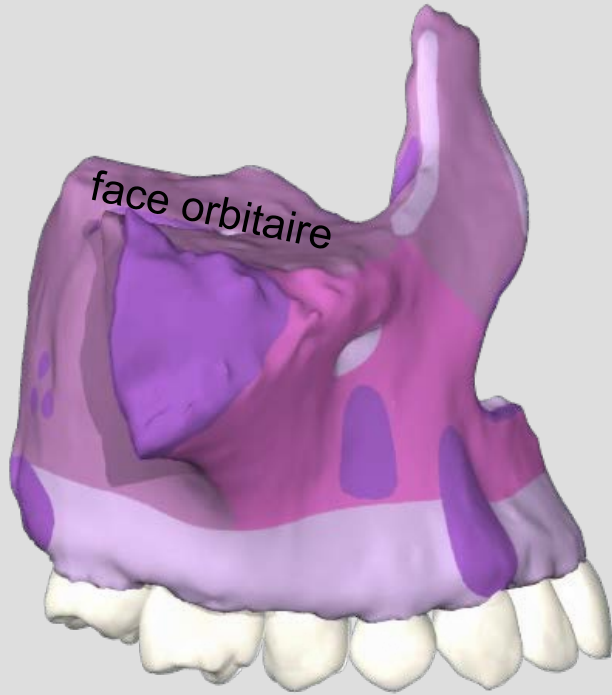
Foramen rond
Foramen ovale

jugum sphénoïdal
selle turcique
tubercule de la selle
dorsum sellae

Vue postérieure



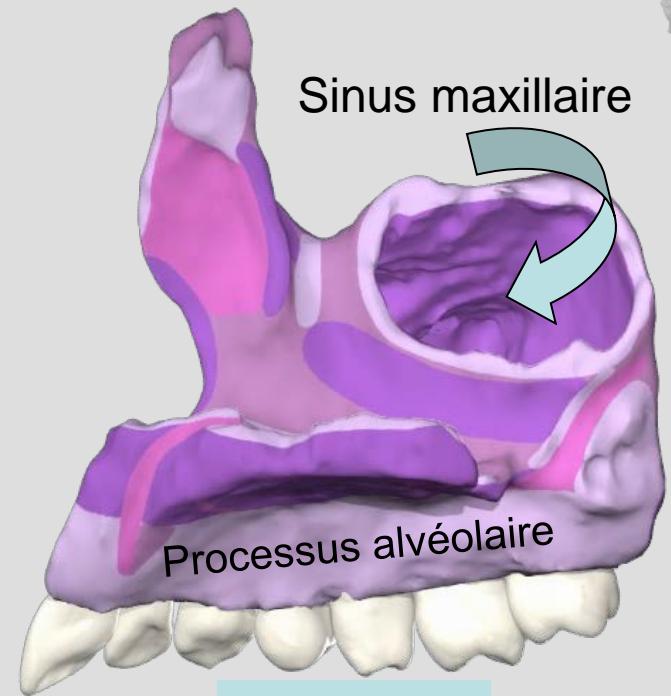
Processus frontal



face orbitaire

profil externe

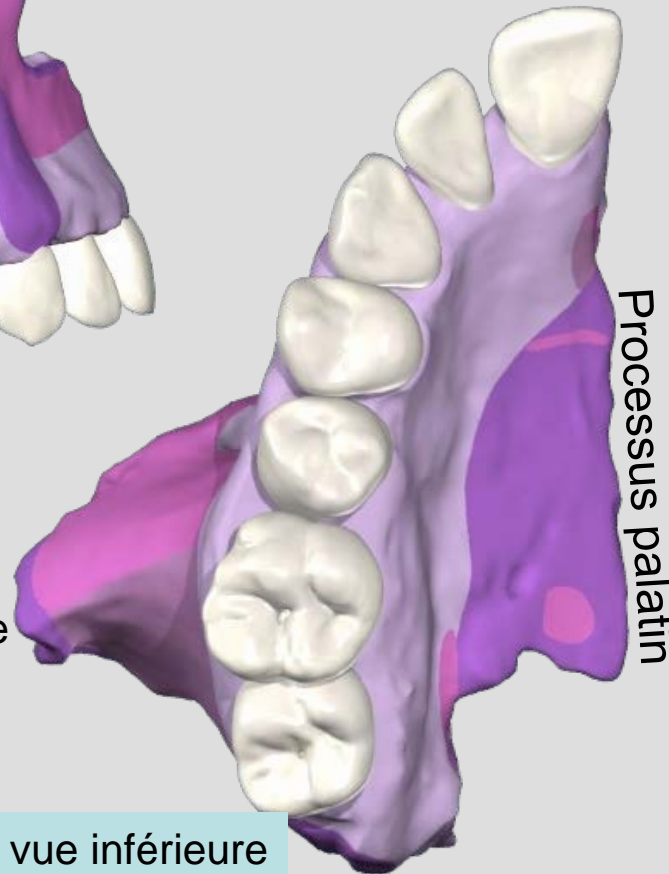
Sinus maxillaire



Processus alvéolaire

profil interne

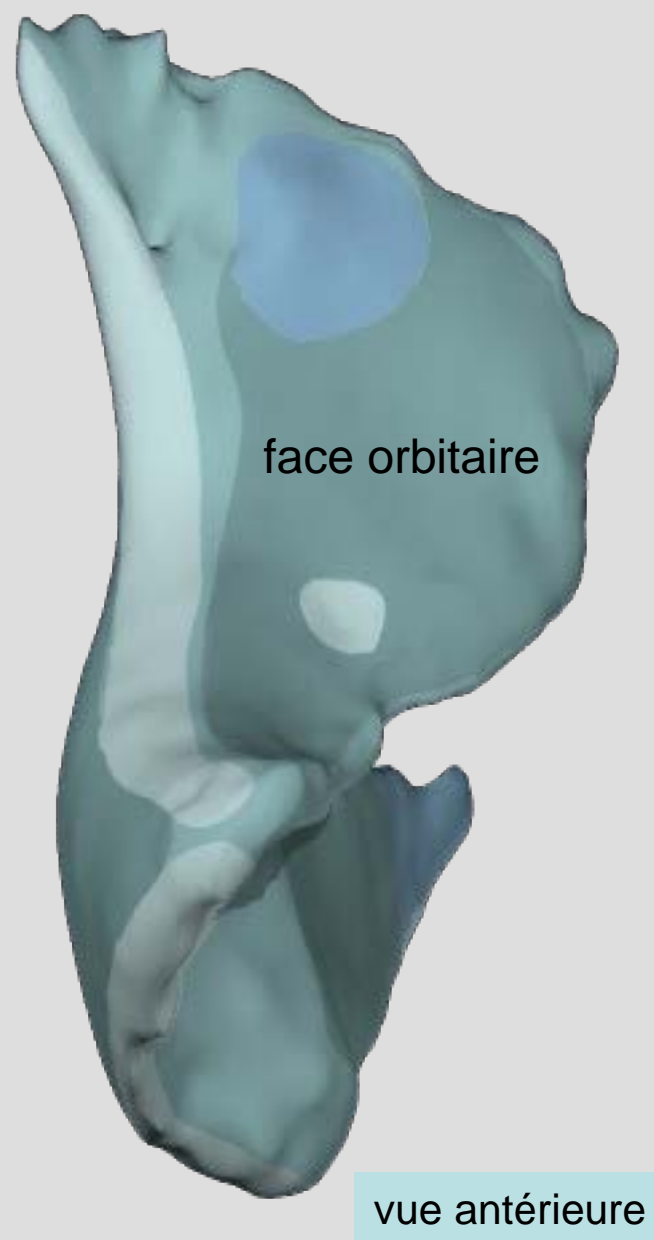
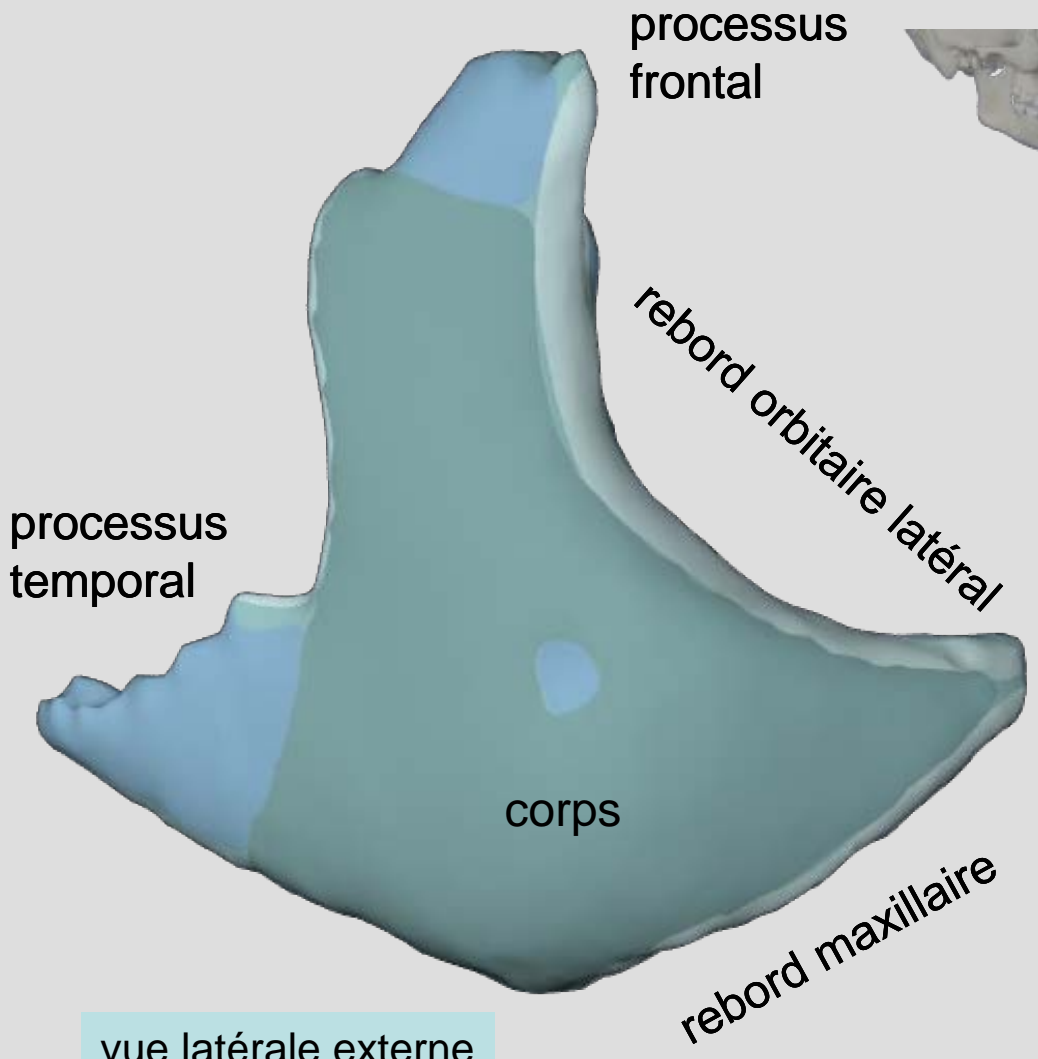
Processus zygomaticus



Processus palatin

vue inférieure

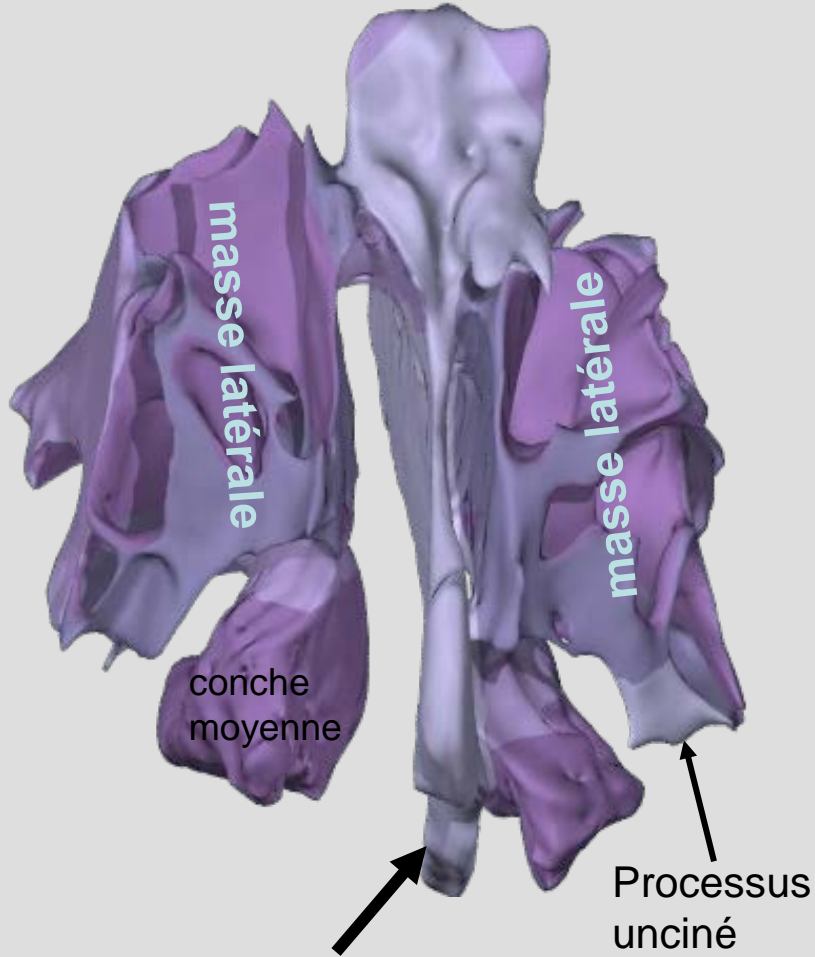
OS MAXILLAIRE
(supérieur)



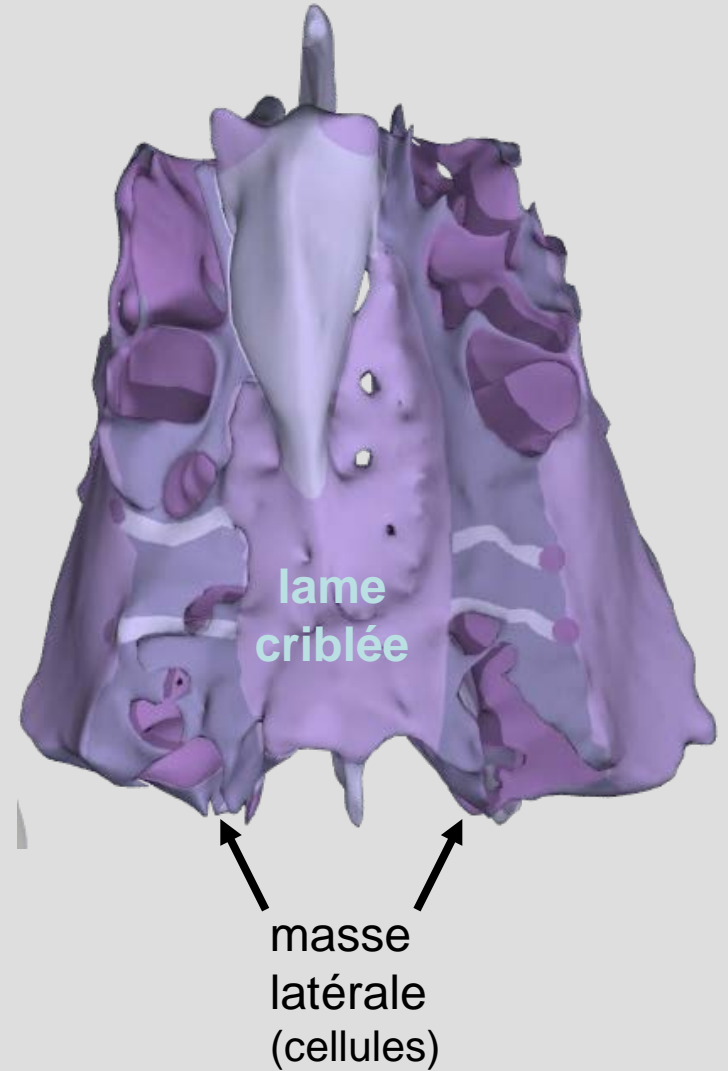
OS MALAIRE (ZYGOMATIQUE)

OS ETHMOÏDE

apophyse crista galli



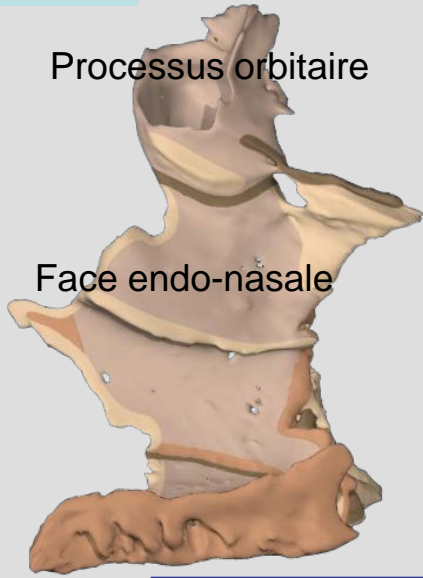
apophyse crista galli



profil interne

Processus orbitaire

Face endo-nasale



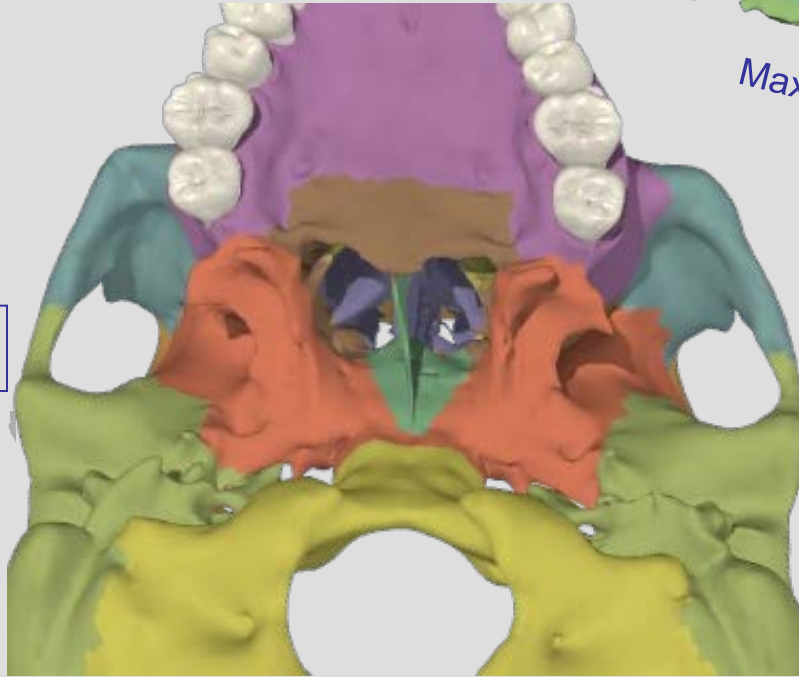
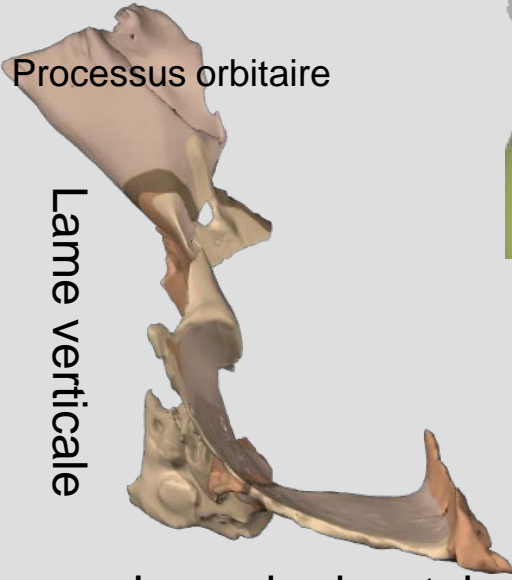
PALATIN

vue antérieure

Processus orbitaire

Lame verticale

Lame horizontale

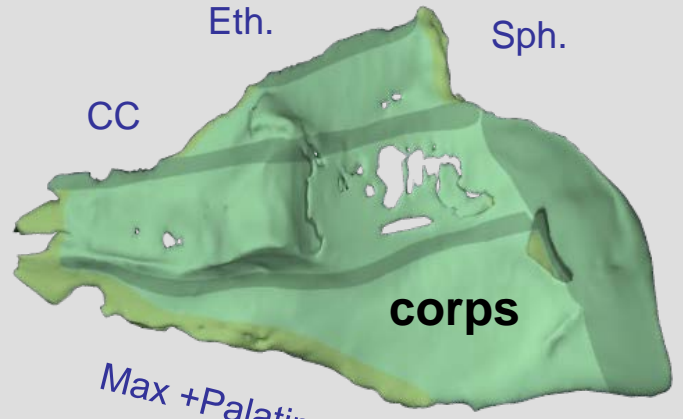


Eth.

Sph.

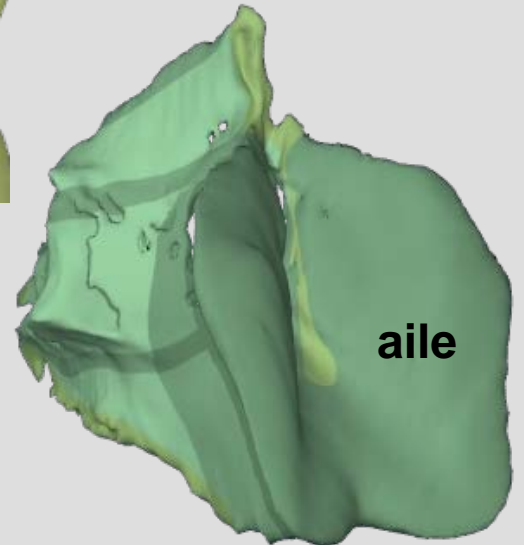
CC

Max +Palatin



corps

VOMER



aile

Os lacrymal



Face endo-orbitaire

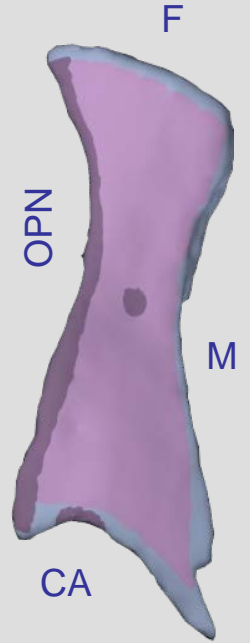
profil interne



orifice
du
canal
lacrymo-nasal

vue de face

Os nasal



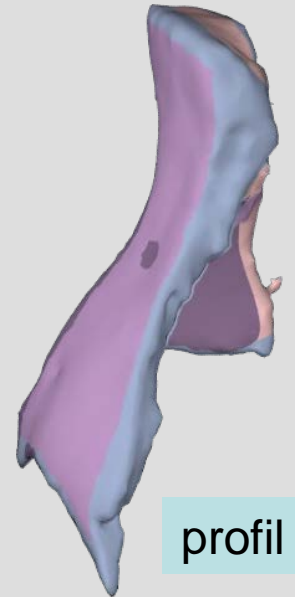
OPN

CA

F

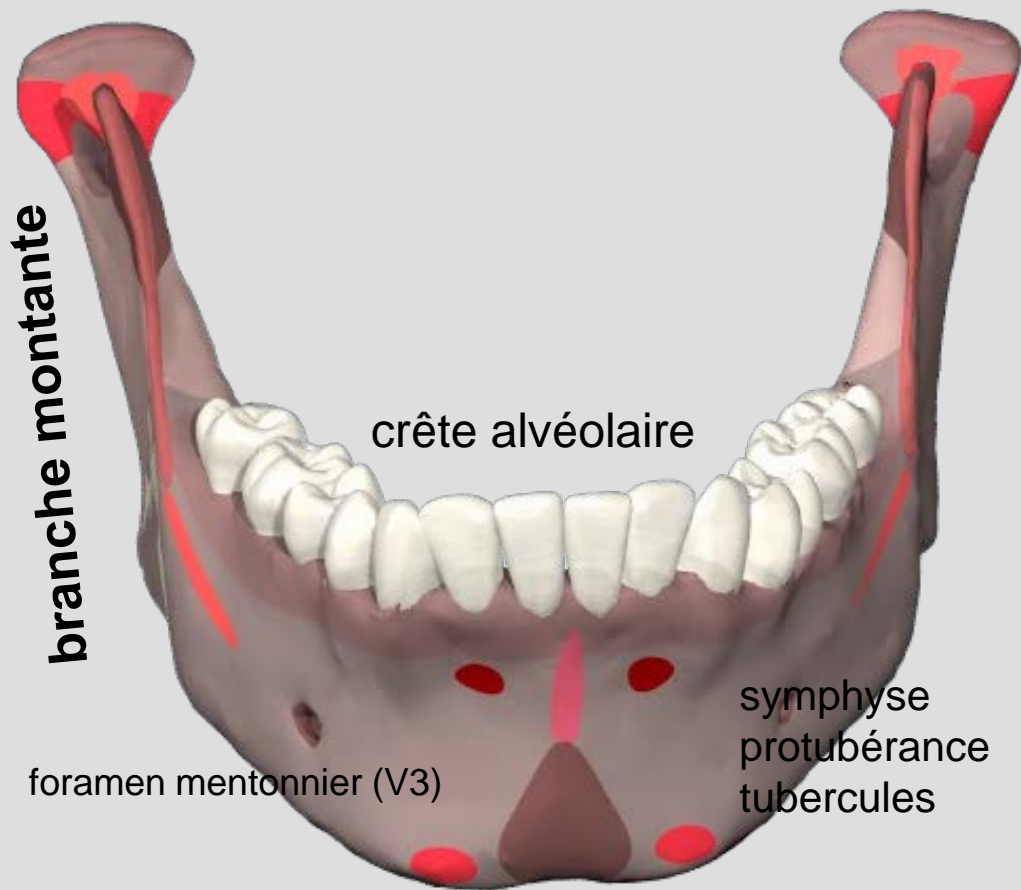
M

vue de face



profil

MANDIBULE

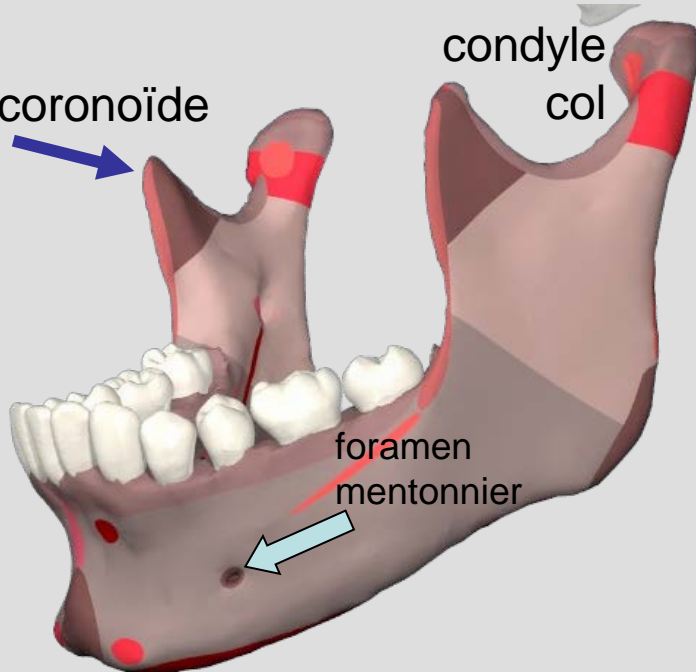


branche horizontale

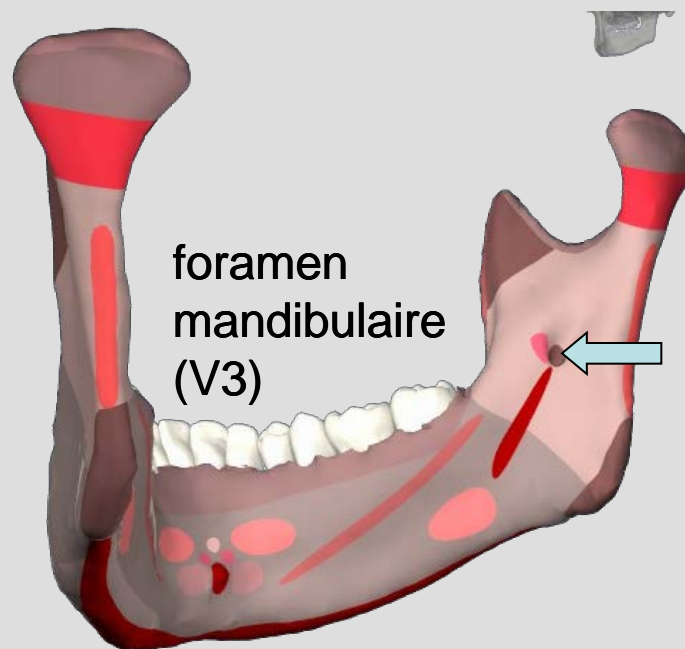
apophyse coronoïde



condyle col



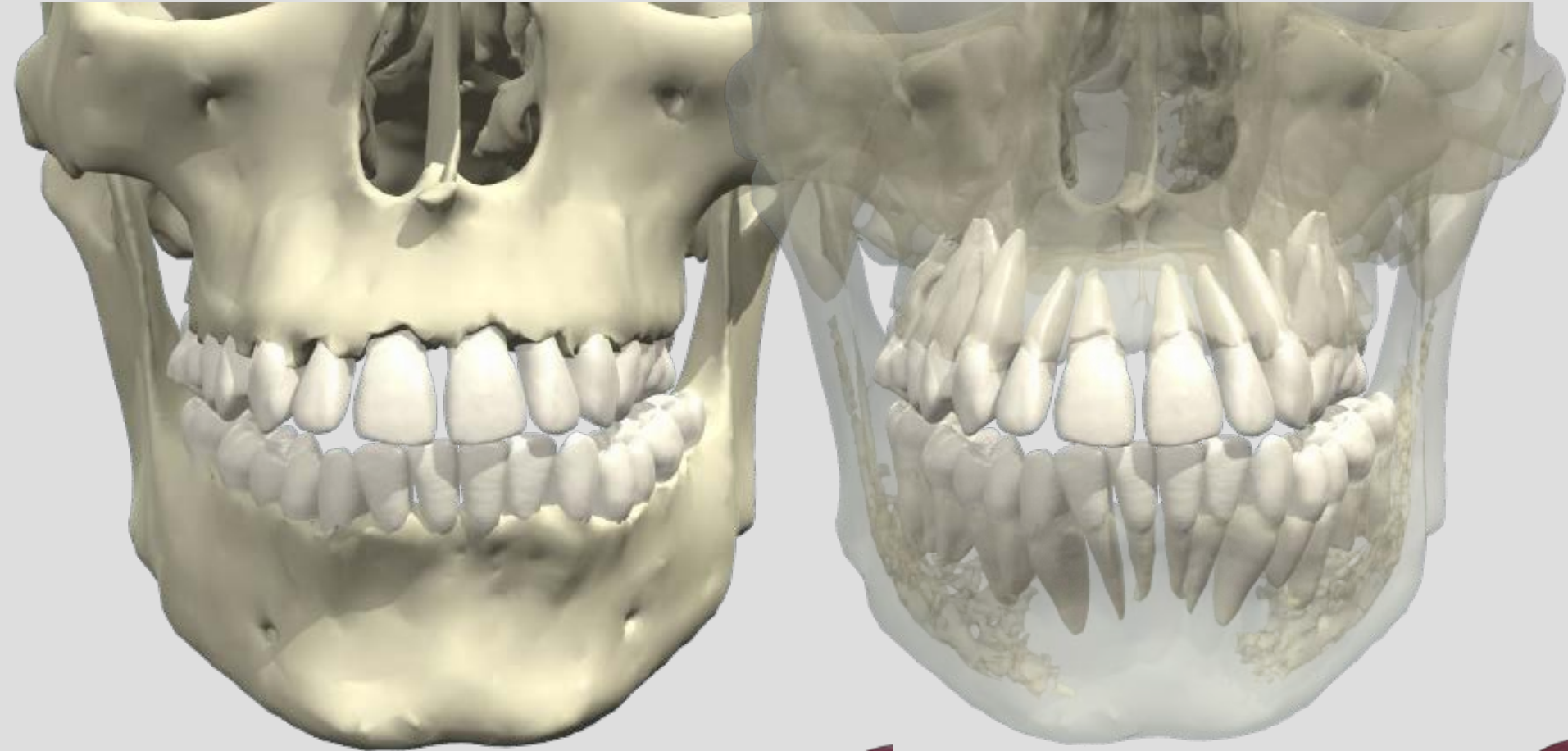
foramen mentonnier

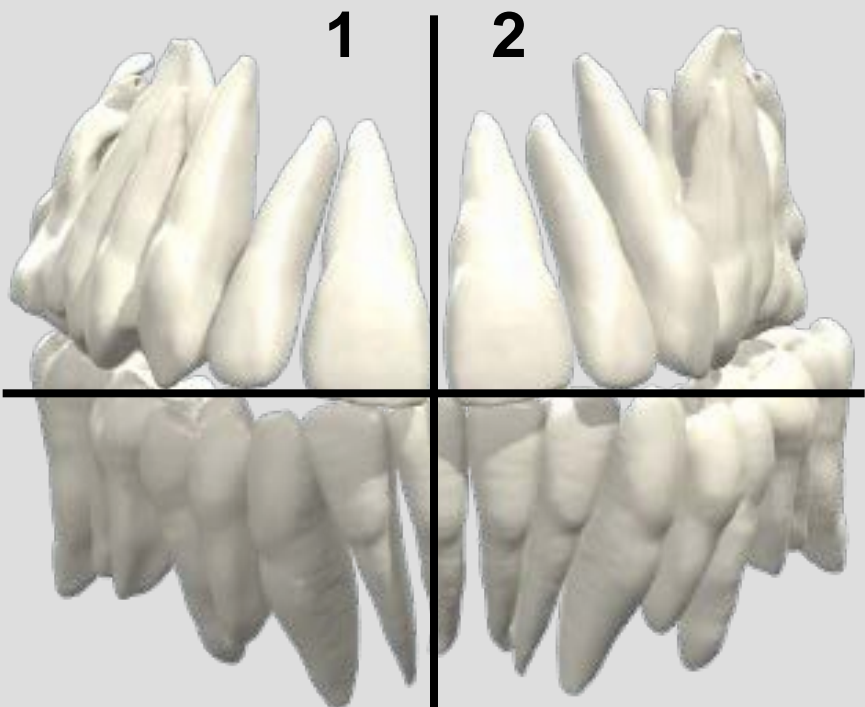


foramen mandibulaire (V3)

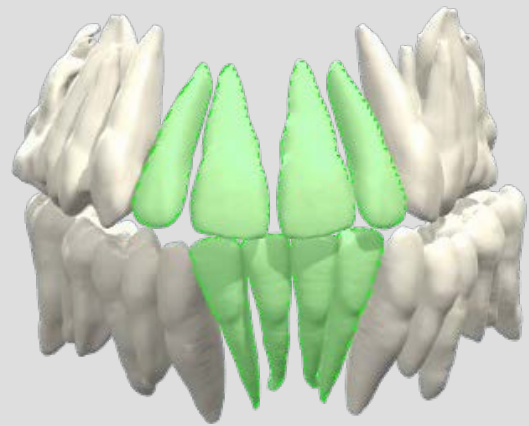


Dentition

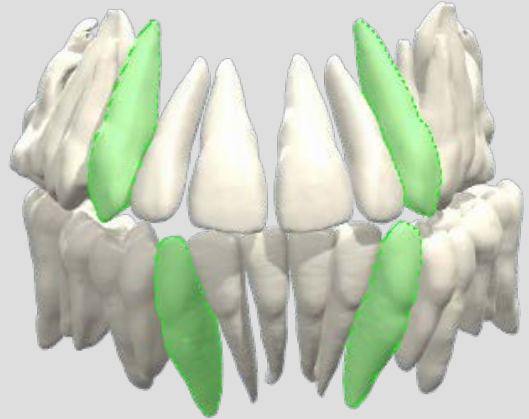




4 incisives

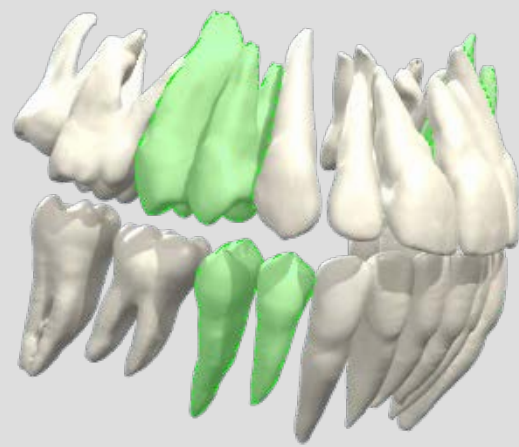


2 canines



2-3 molaires

2 prémolaires



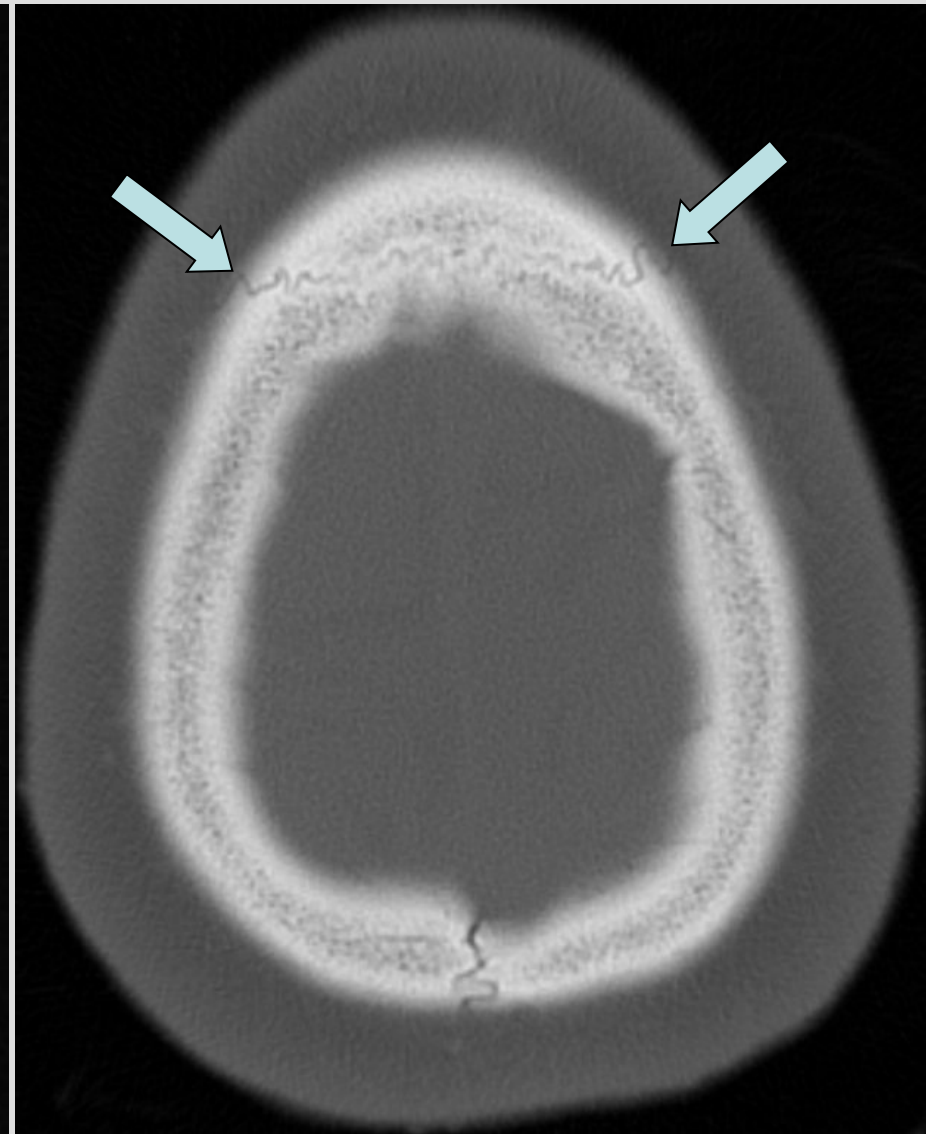
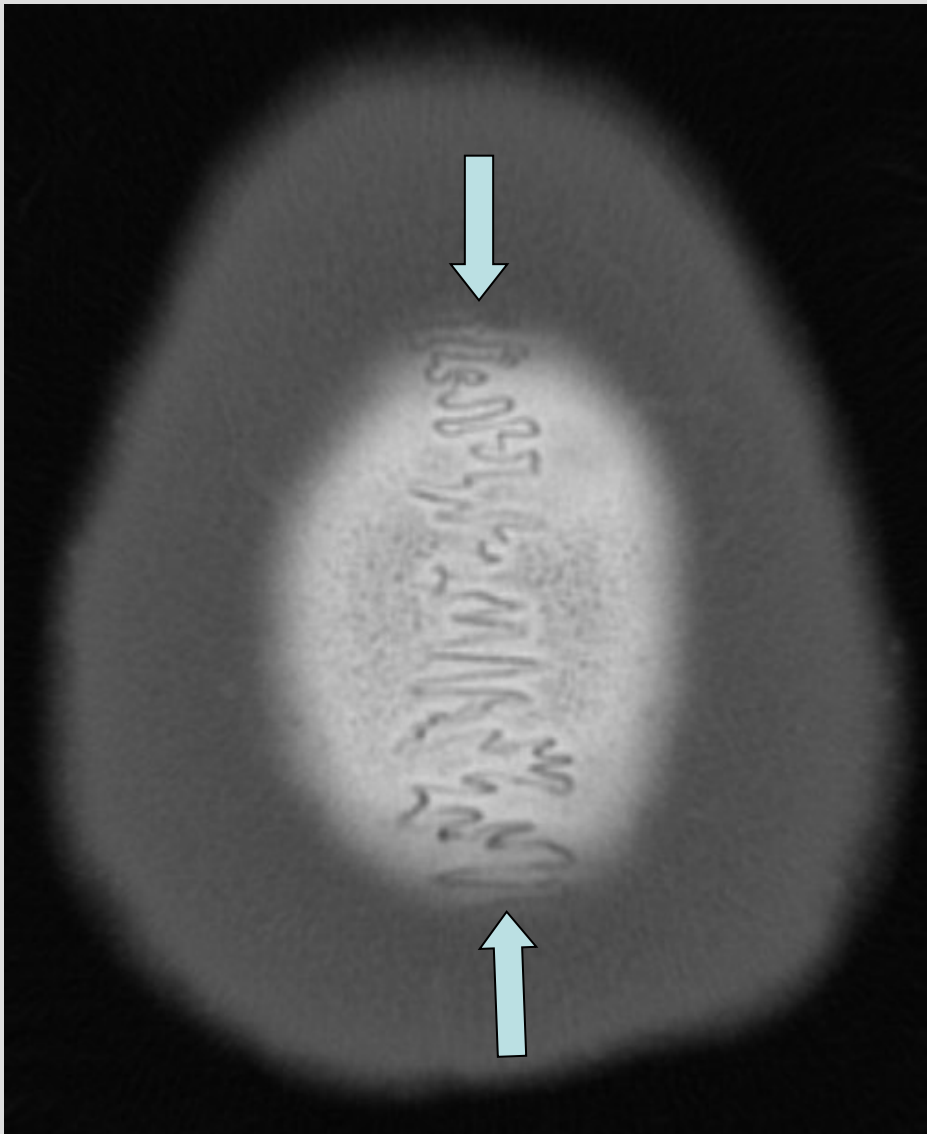
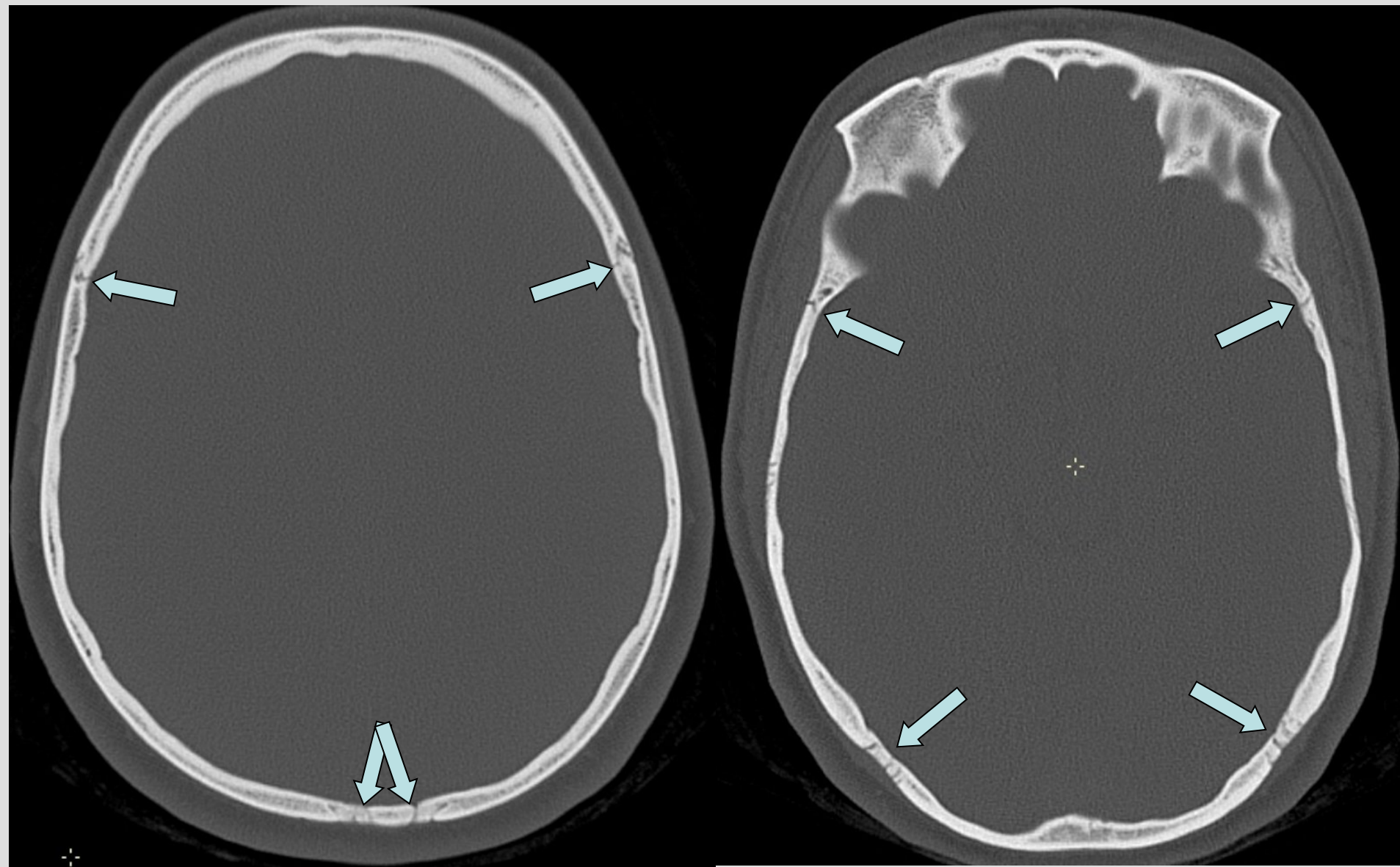


table externe
table interne
diploé



Toit orbitaire Impressions digitiformes

