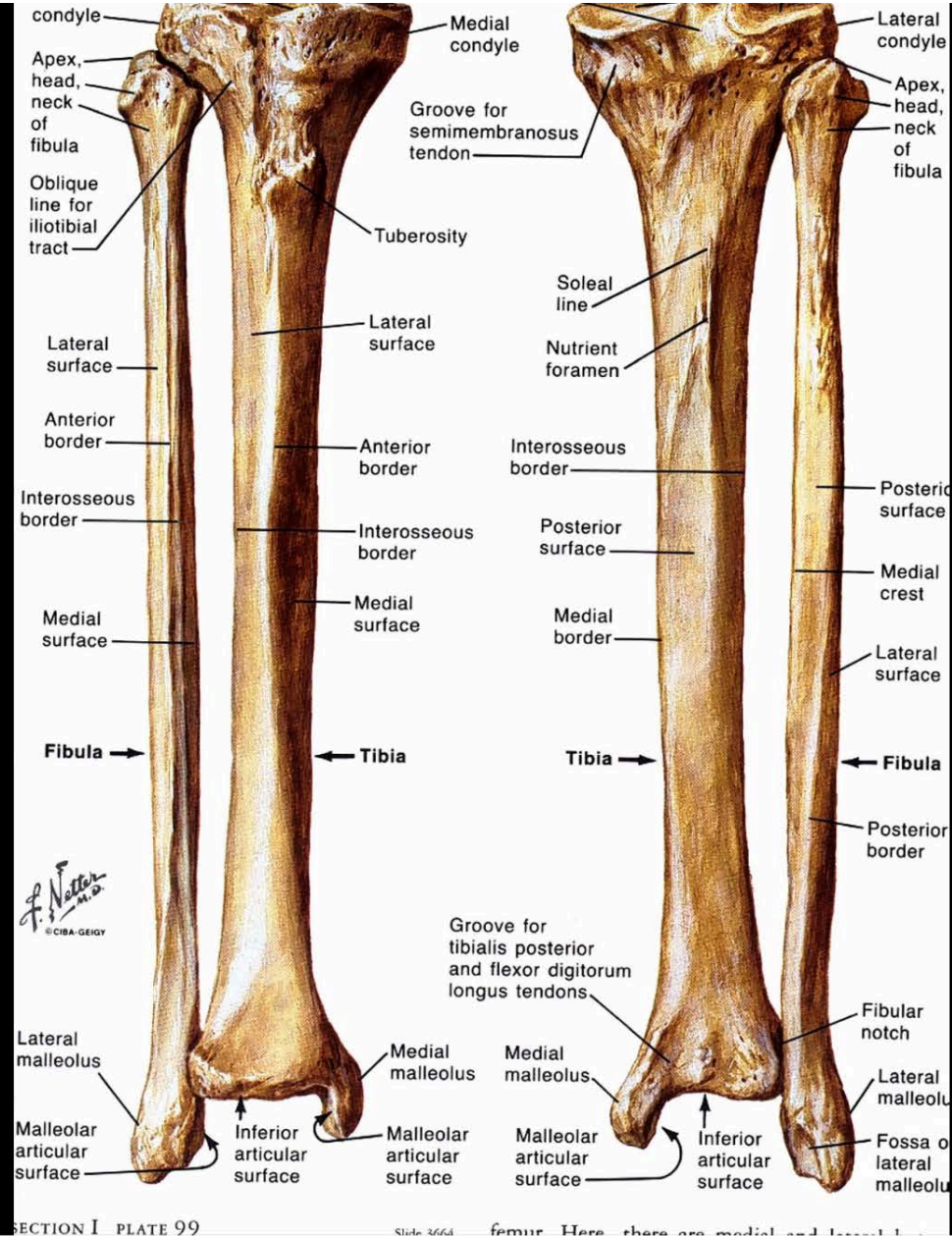
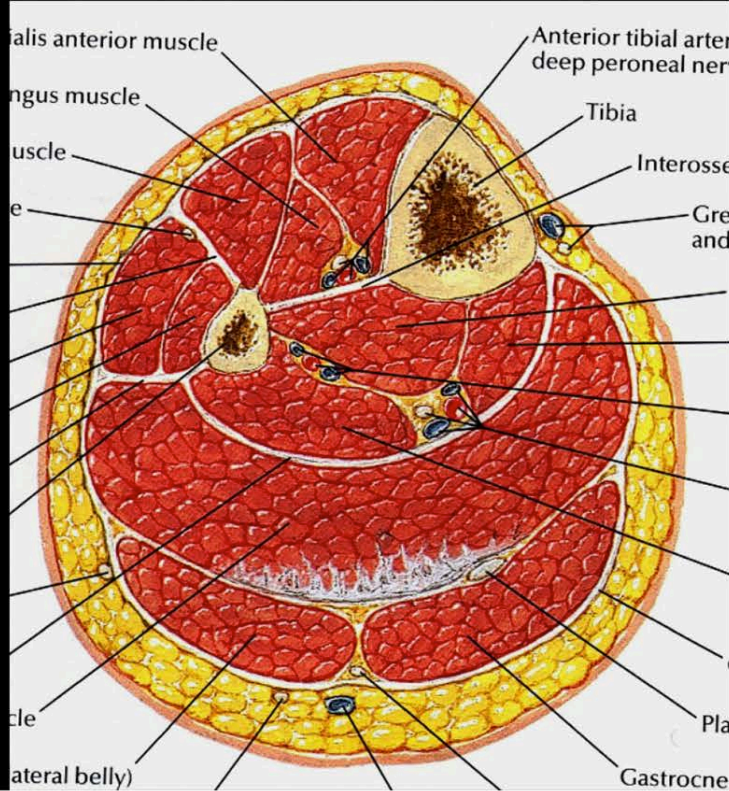
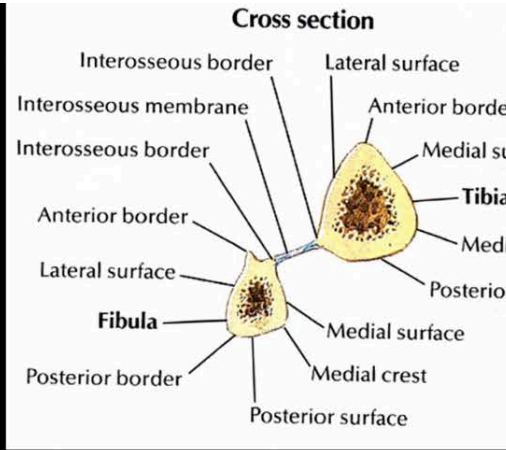


Notions élémentaires d'imagerie de la jambe

2019

Jambe

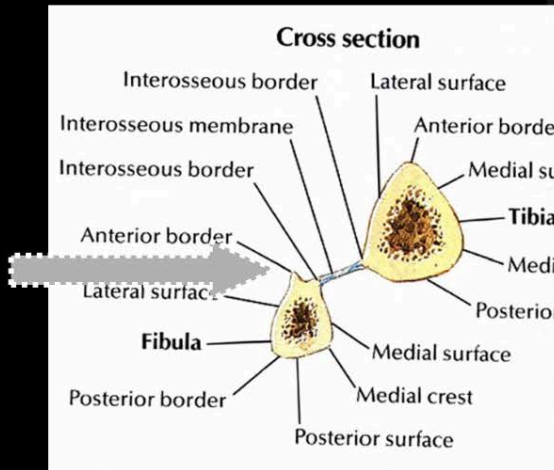
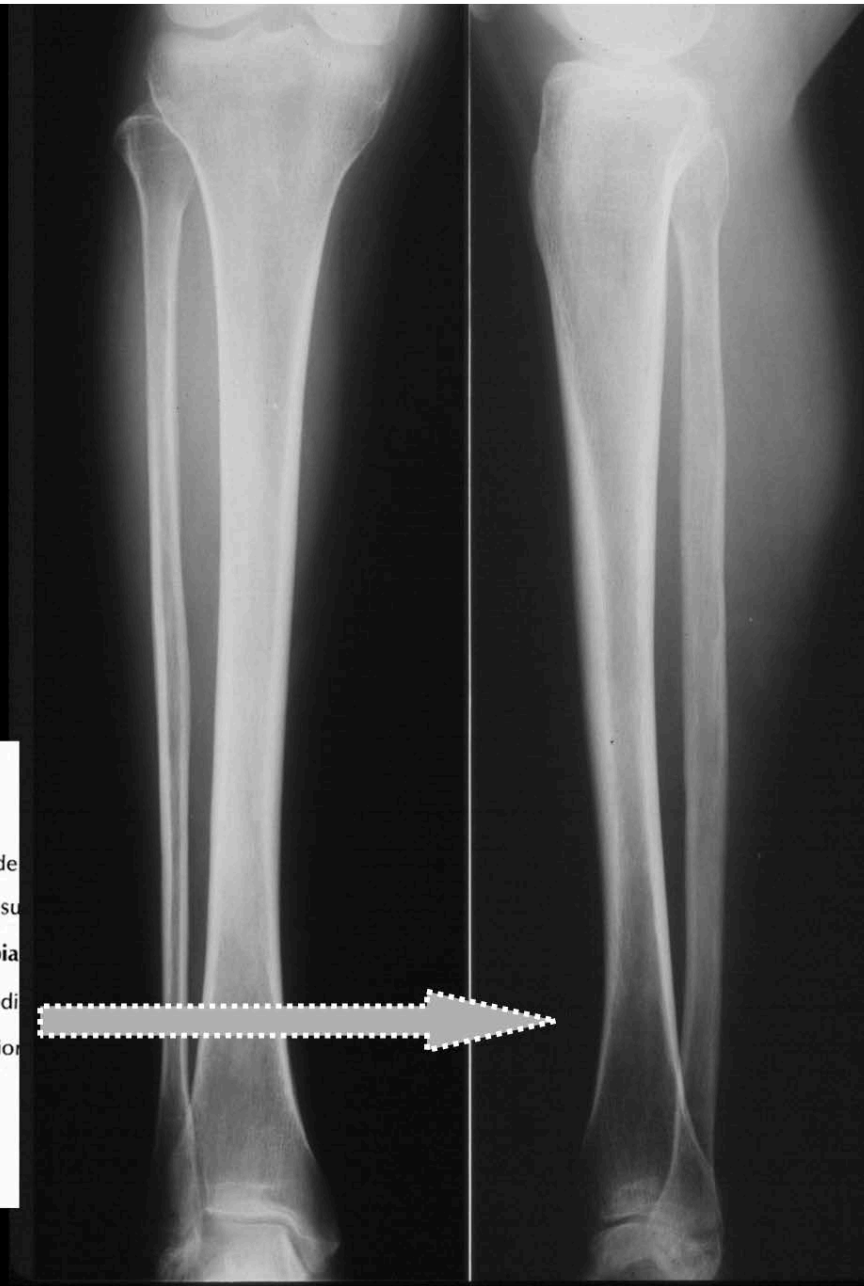


Jambe

Face

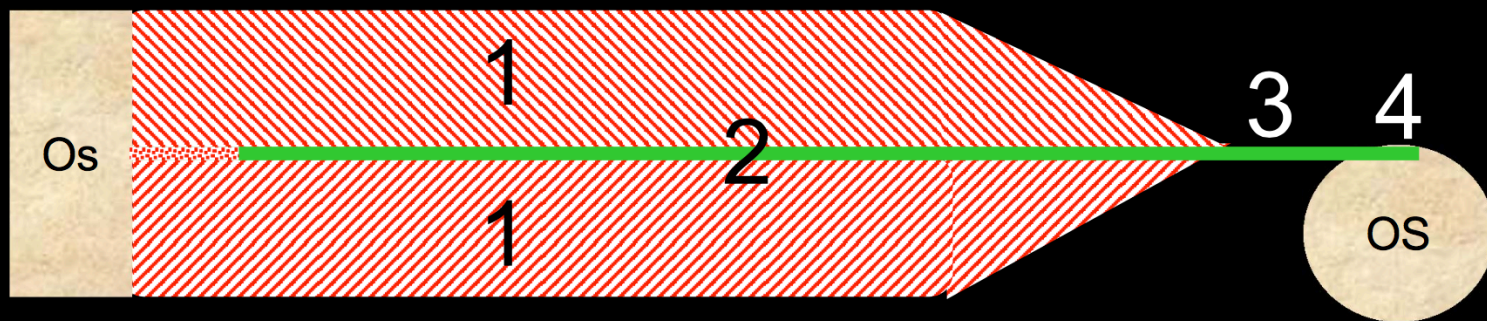


Profil



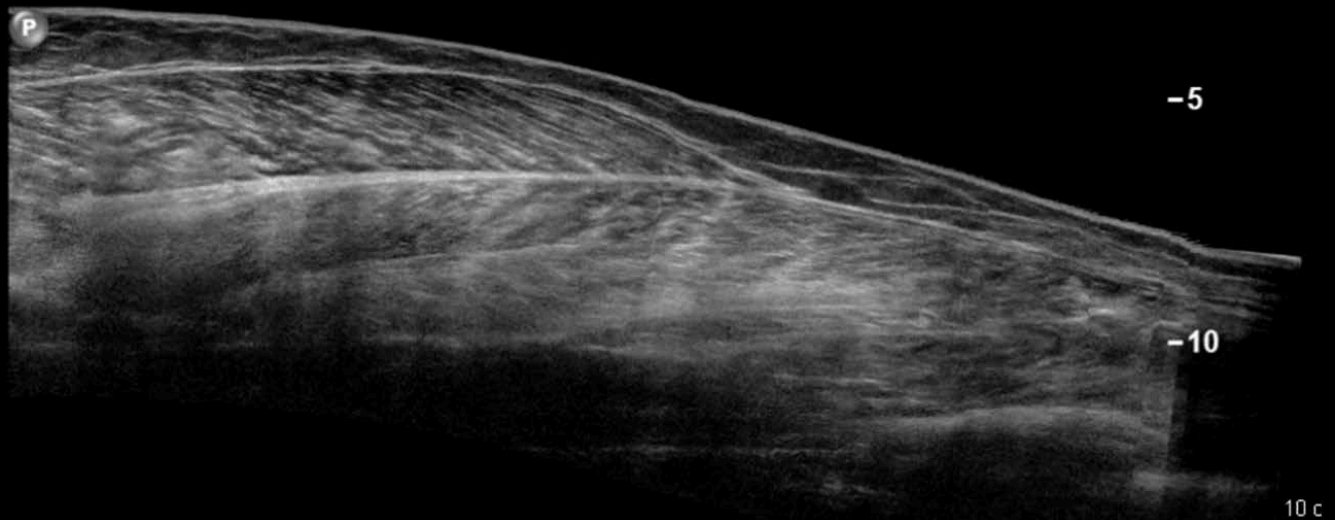
Anatomie musculaire

1. **Fibre musculaire**: composante motrice
2. **Aponévrose**: squelette fibreux musculaire (central- périphérique)
3. **Tendon**: structure fibreuse prolongeant l'aponévrose
4. **Enthèse**: jonction tendino-osseuse



Coupe longitudinale du mollet

Normal



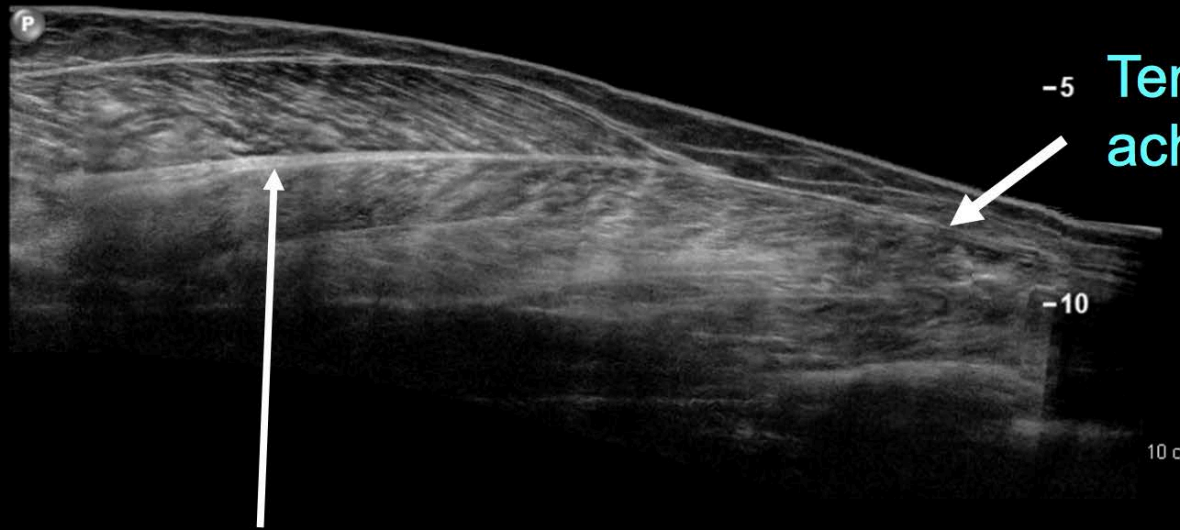
Coupe longitudinale du mollet

Cranial

Normal Caudal

M. Gastrocnémien
médial

M. soléaire



-0
-5 Tendon
achille

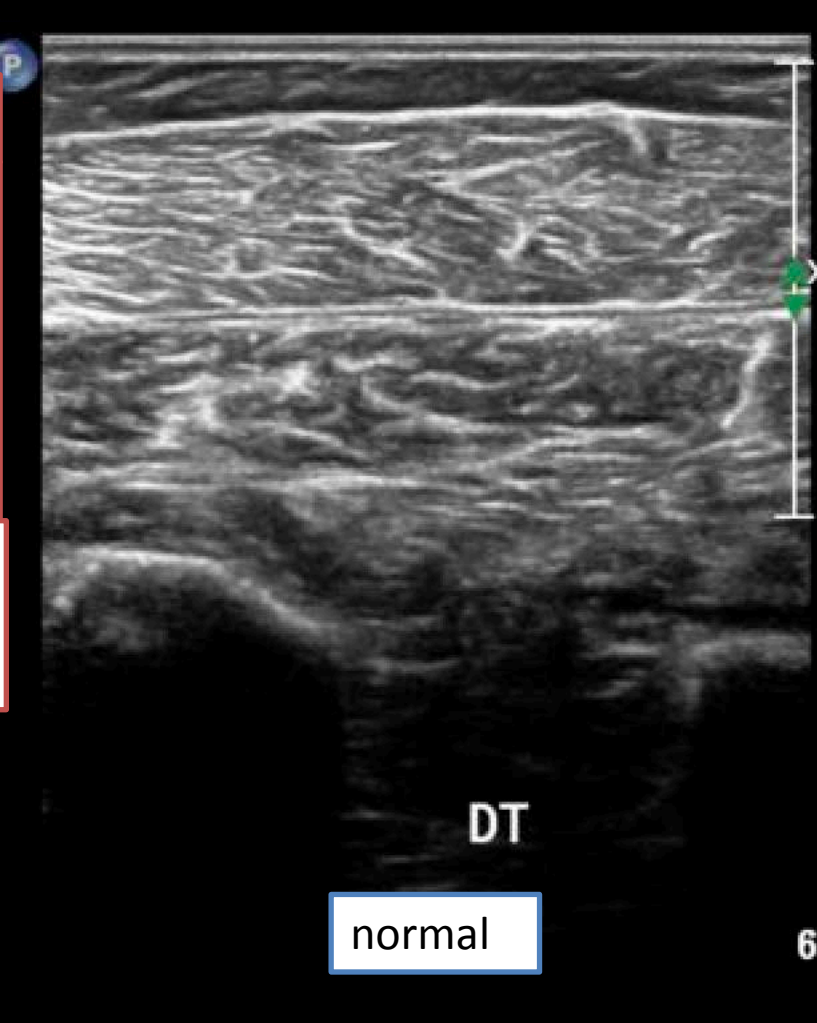
-10

10 c

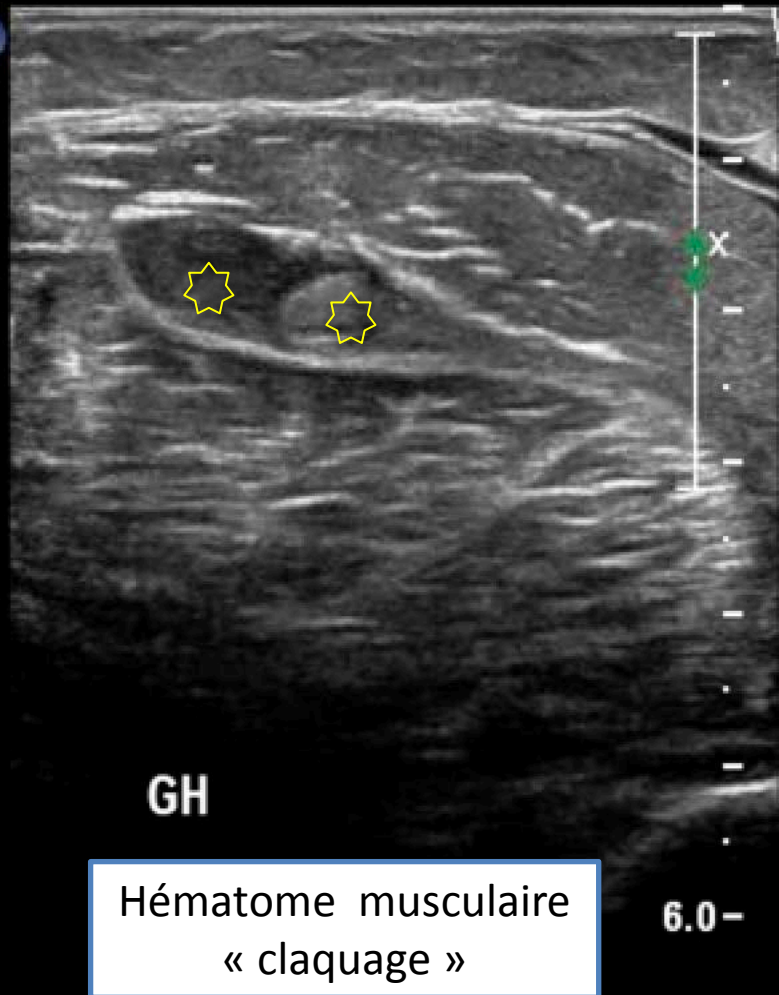
Aponévrose entre le gastrocnémien médial
et le soléaire

Mollet, échographie, vue par abord postérieur, coupes transversales

- Peau
- Graisse sous cutanée
- Muscles
- Contours osseux

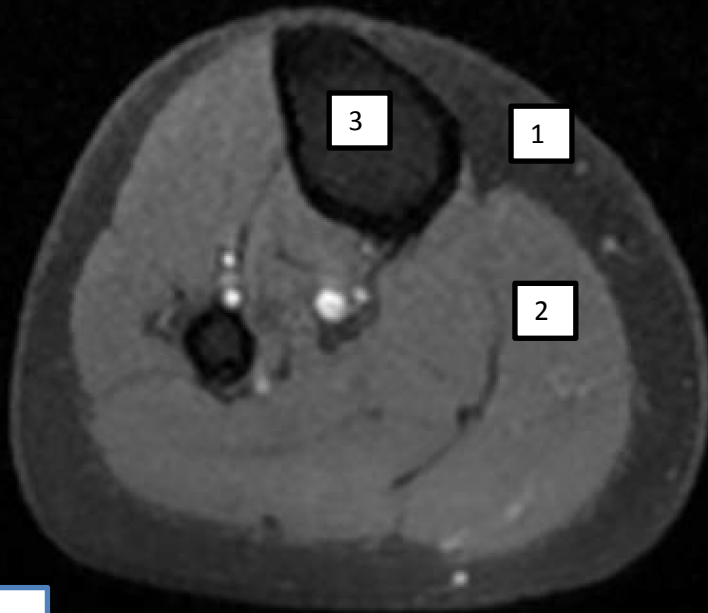


DT
normal

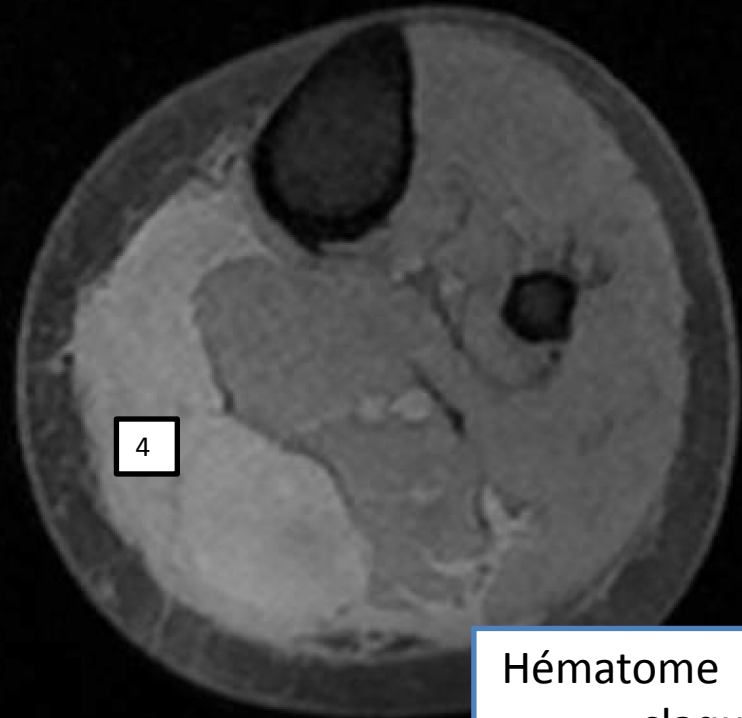


GH
Hématome musculaire « claquage »

Mollet, IRM, coupes transversales



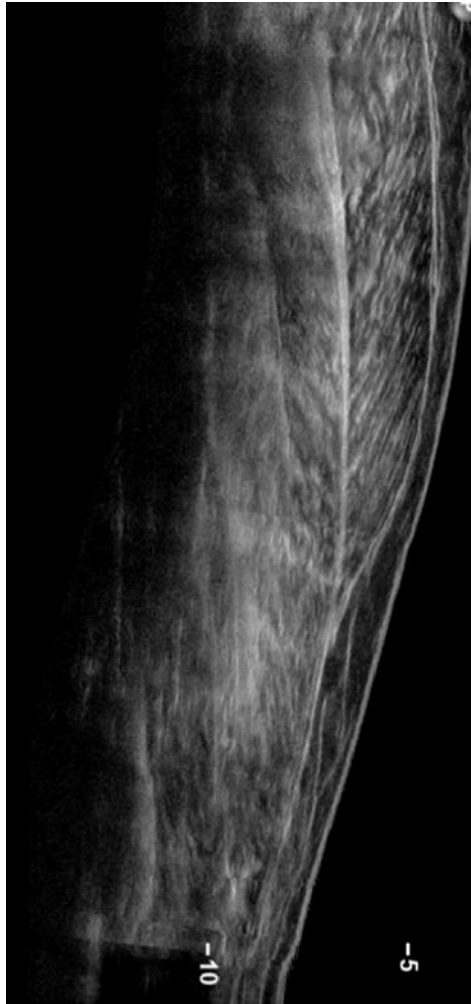
normal



Hématome musculaire
« claquage »

- 1- graisse
- 2- muscles
- 3- os
- 4- hématome

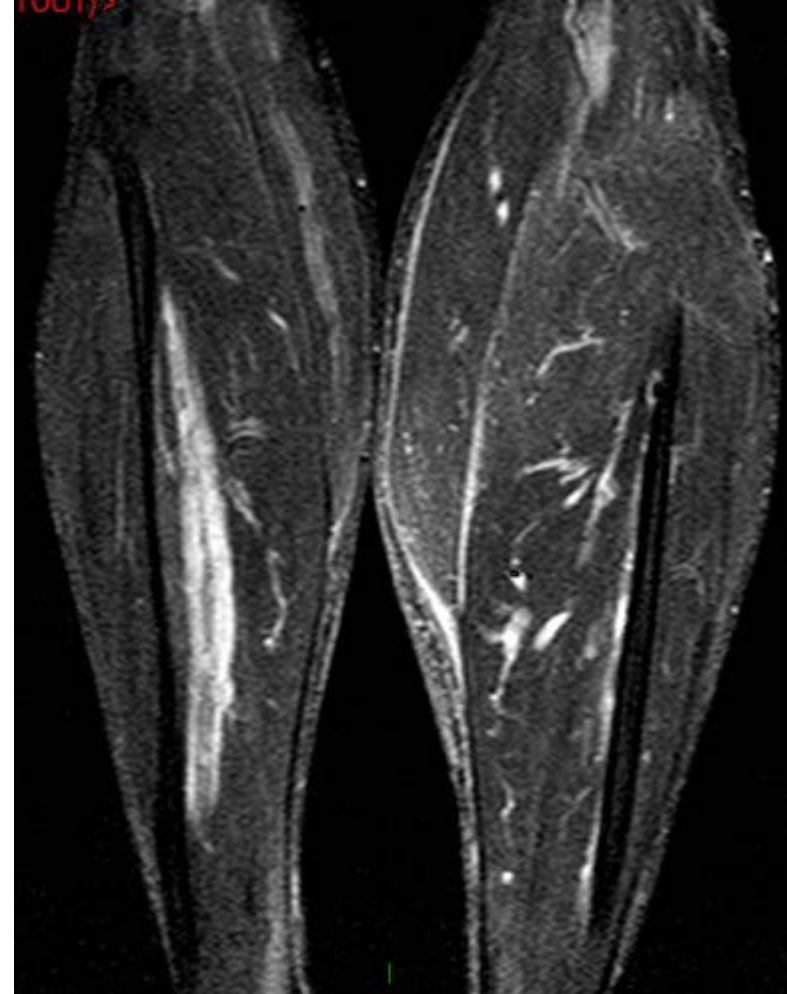
Mollet, vue longitudinale, toutes techniques



écho



scanner



IRM

