

Anatomie radiologique systémique: ostéo

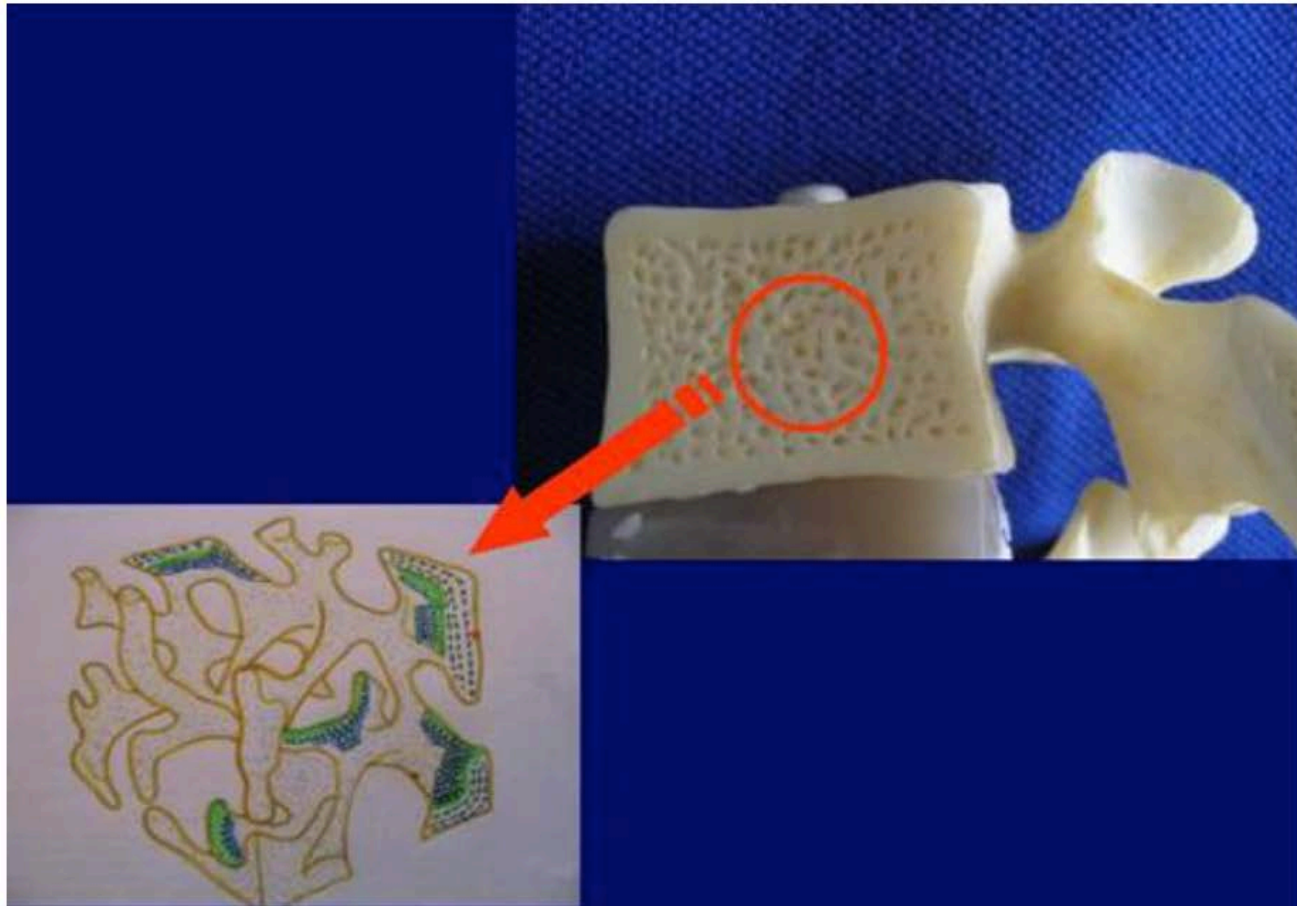
- Os
- Cartilage
- Ligaments/tendons
- Ménisques
- Muscles

OS

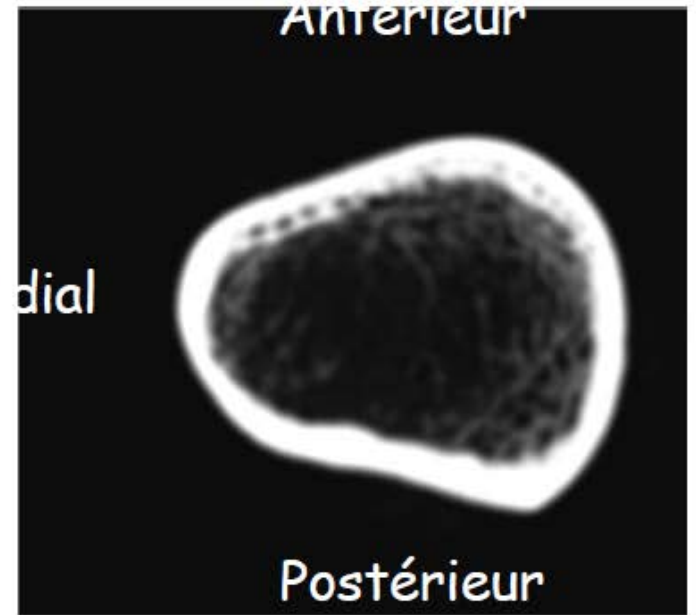
RX US CT IRM

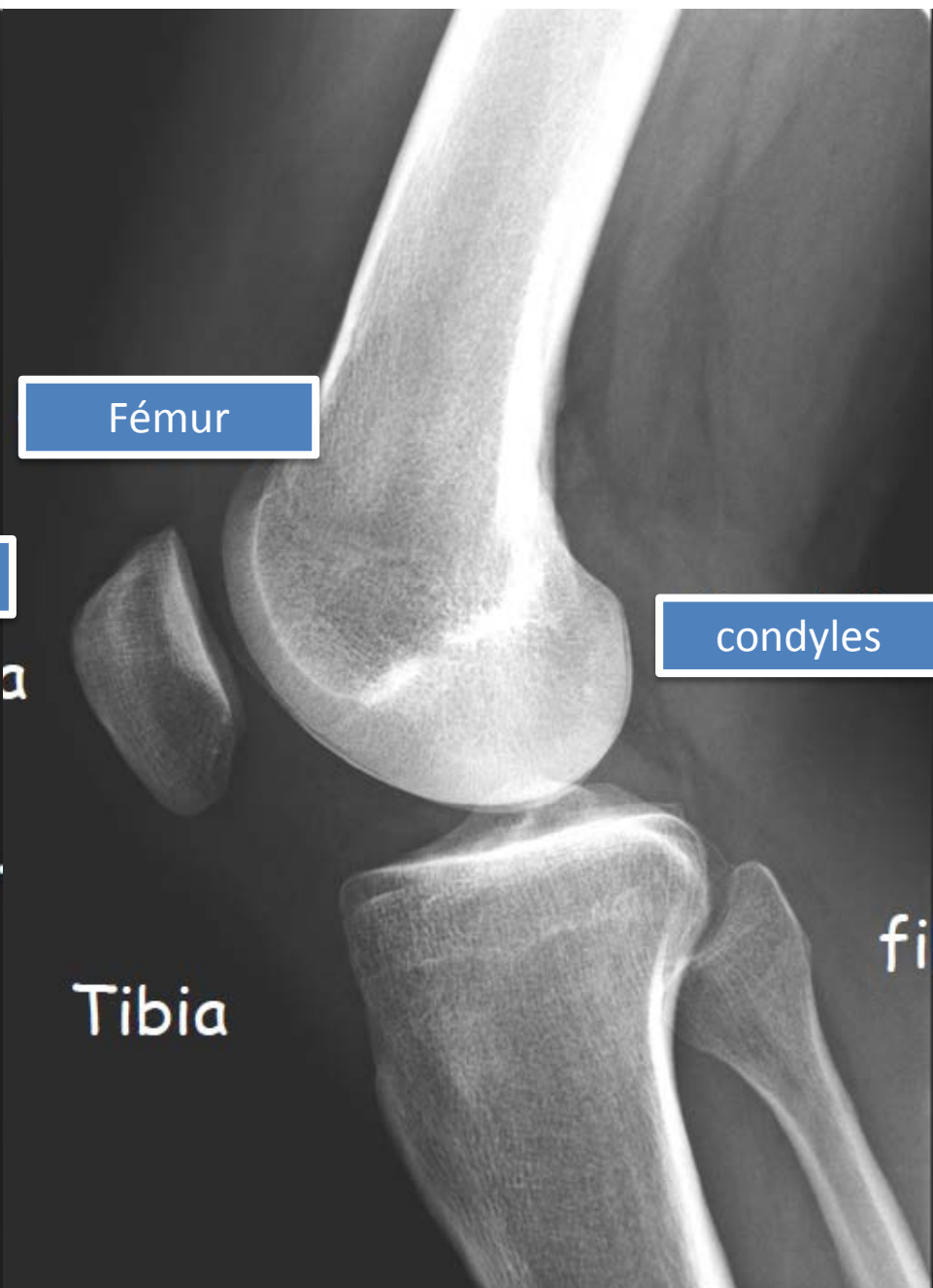
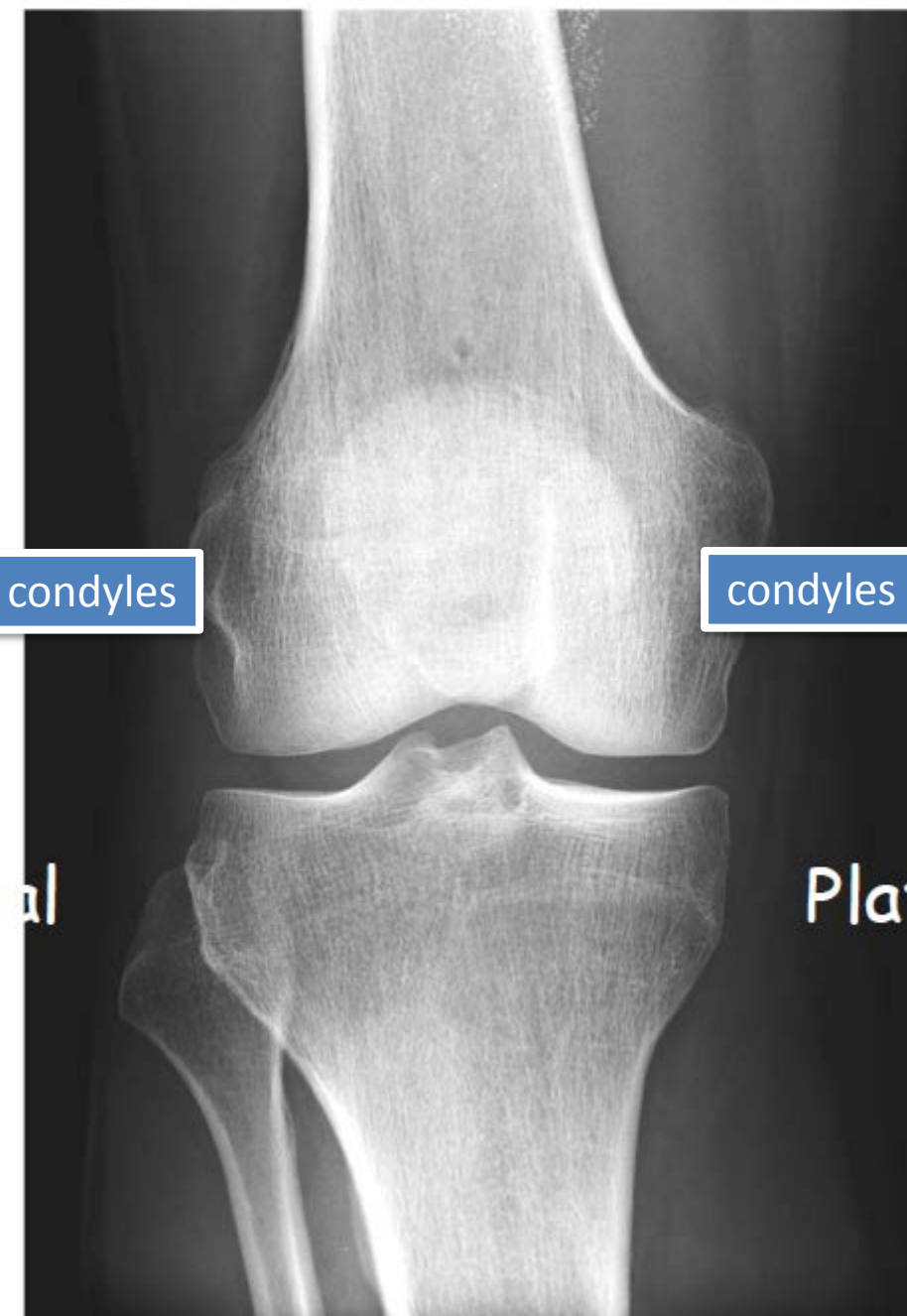


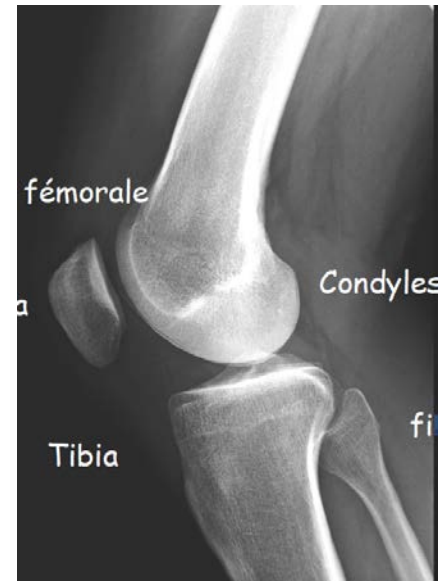
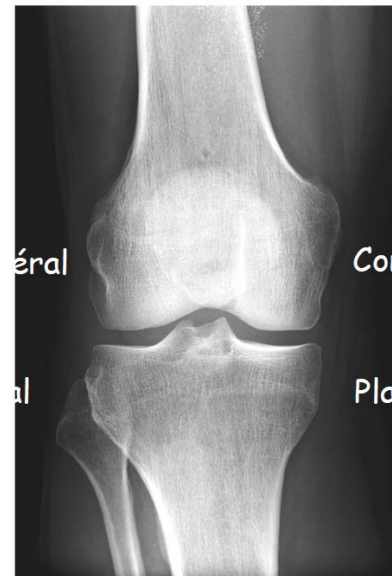
- et l'**os trabéculaire** ou **spongieux** qui est, comme son nom l'indique, constitué de travées. Il est le constituant principal du corps des vertèbres, des os du poignet et du centre des os longs.



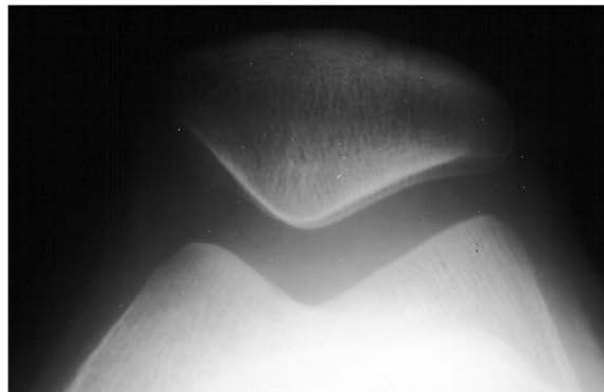
http://www.rhumatologie.asso.fr/04-Rhumatismes/grandes-maladies/0A-dossier-osteoporose/B1_de_quoi_os.asp

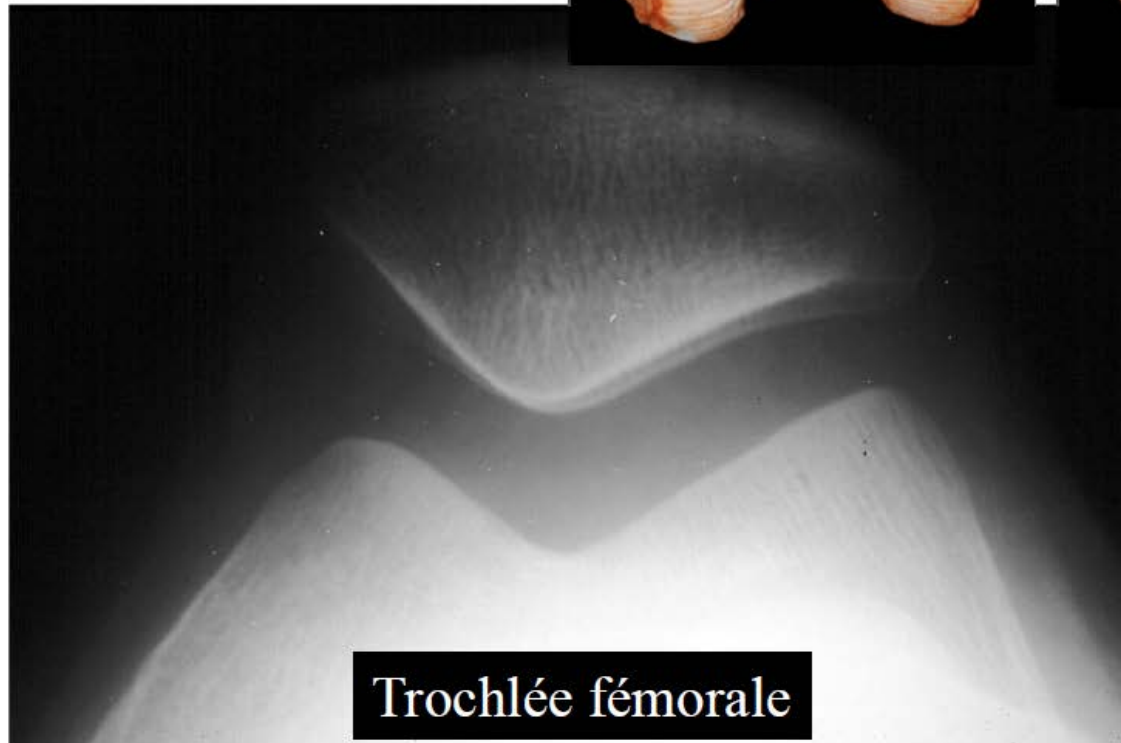
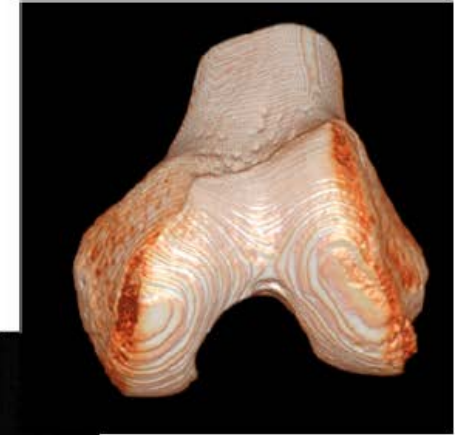






FLEXION 30 °

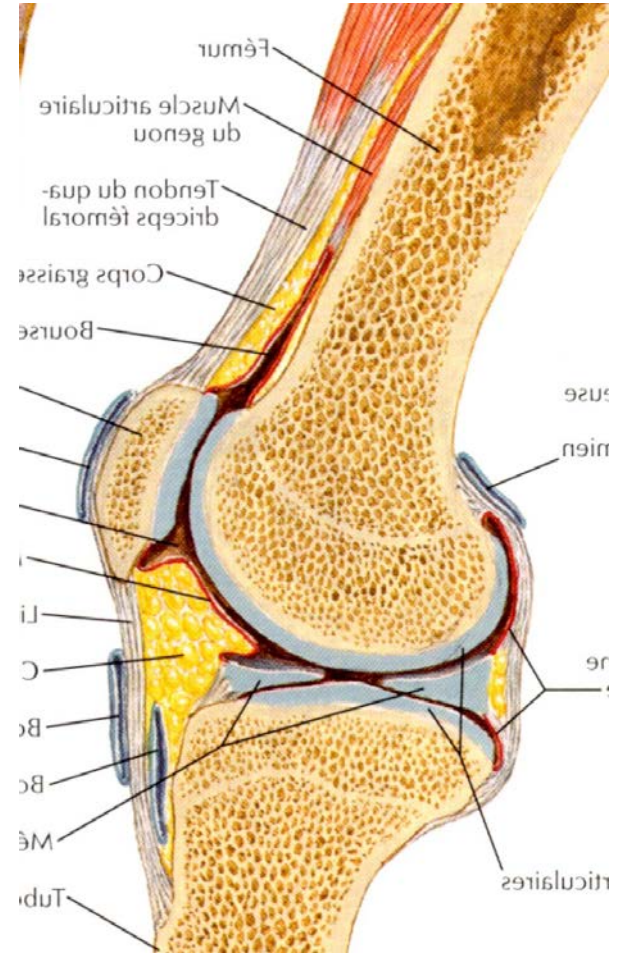
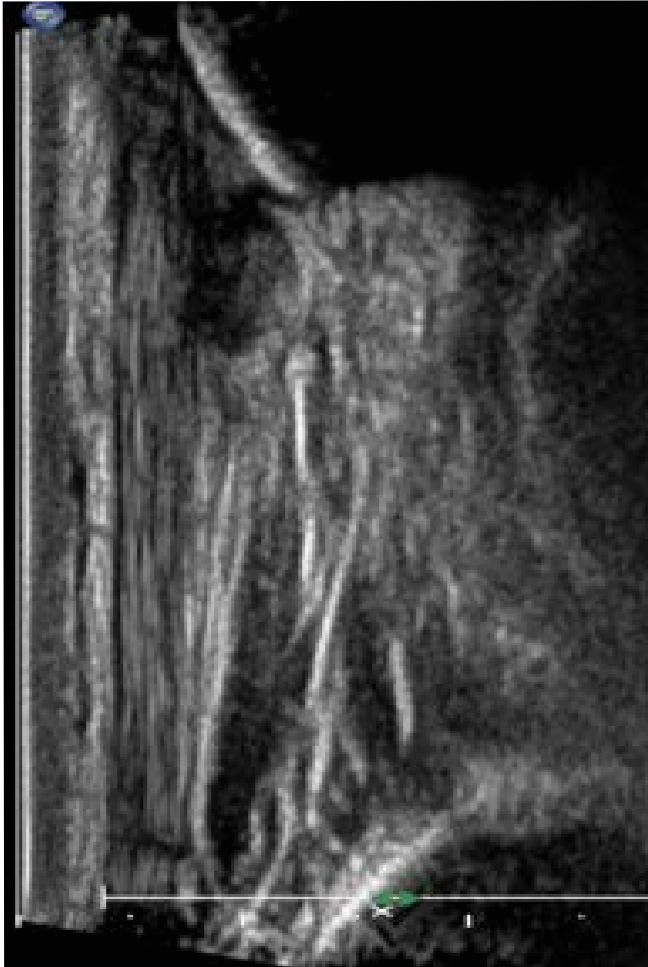




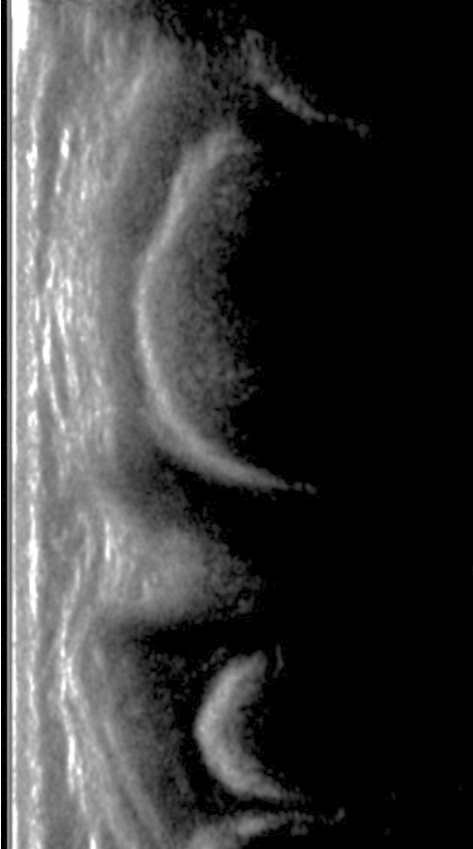
Trochlée fémorale



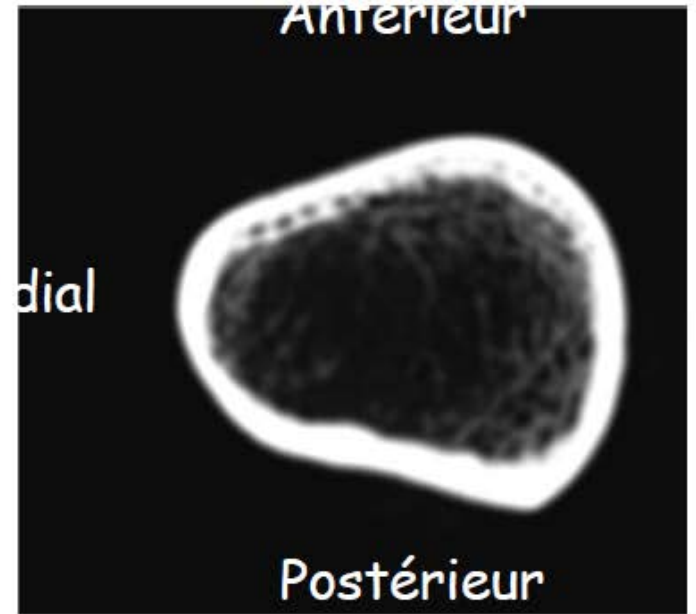
US

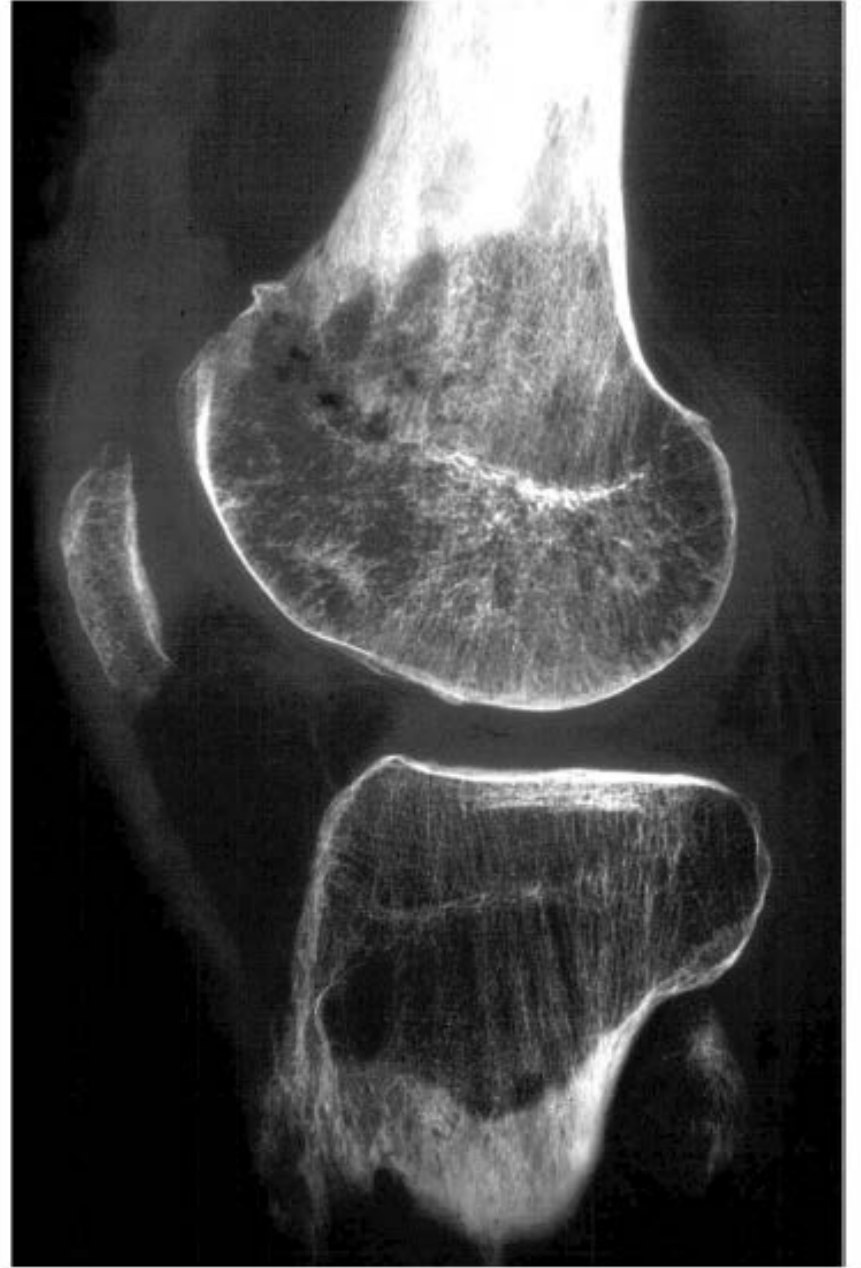
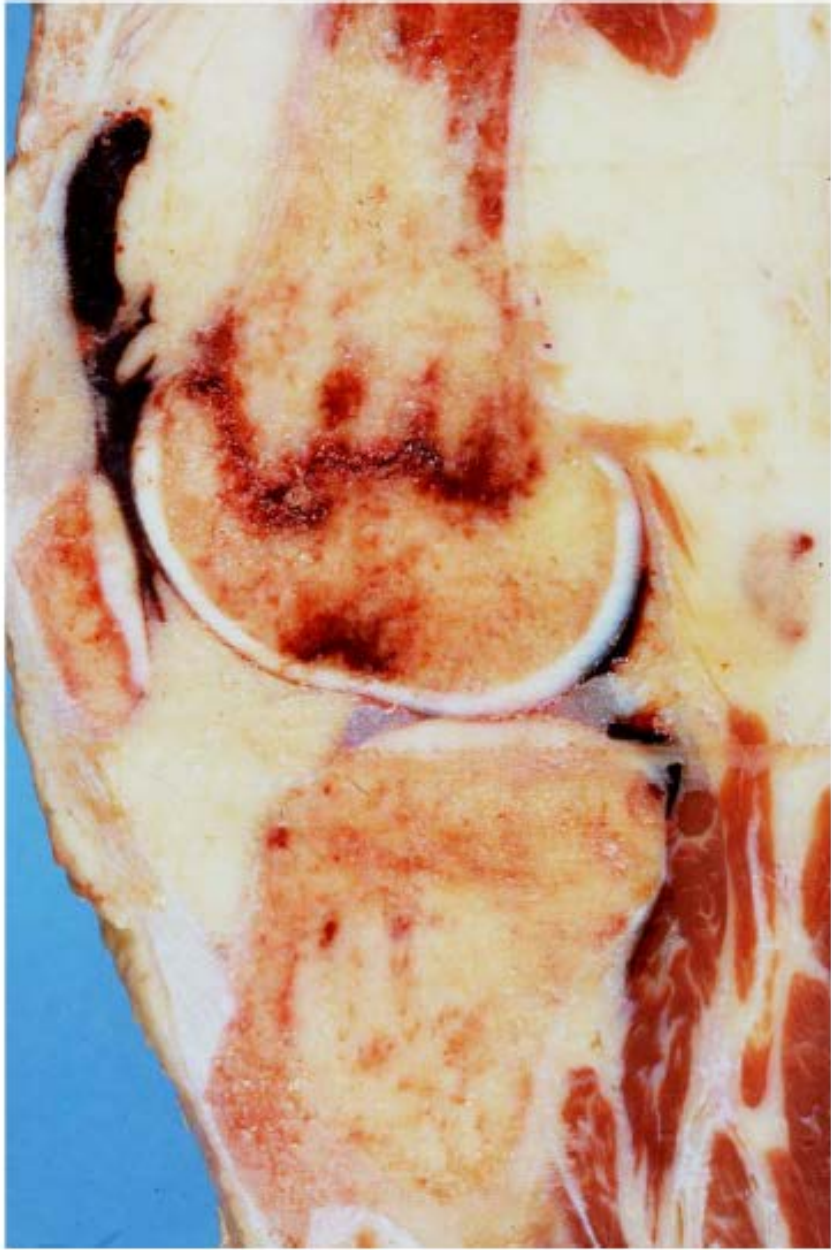


In Netter, Atlas d'anatomie humaine, 4^{ème} édition, 2007

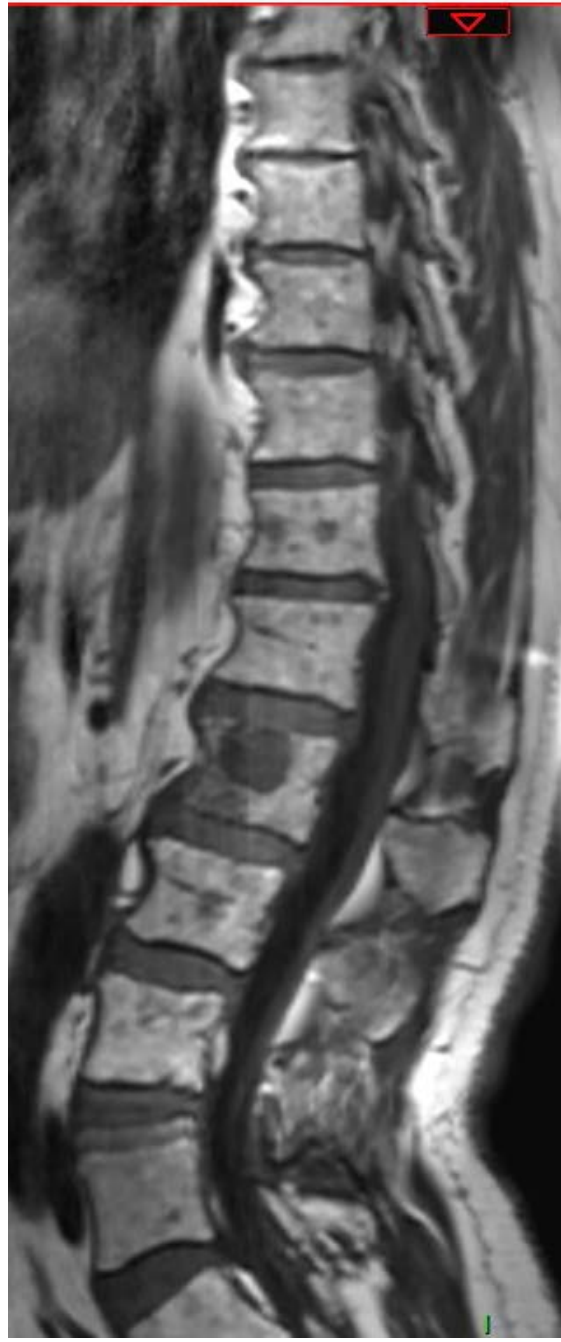


Prof Ph Clapuyt, radiologie pédiatrique











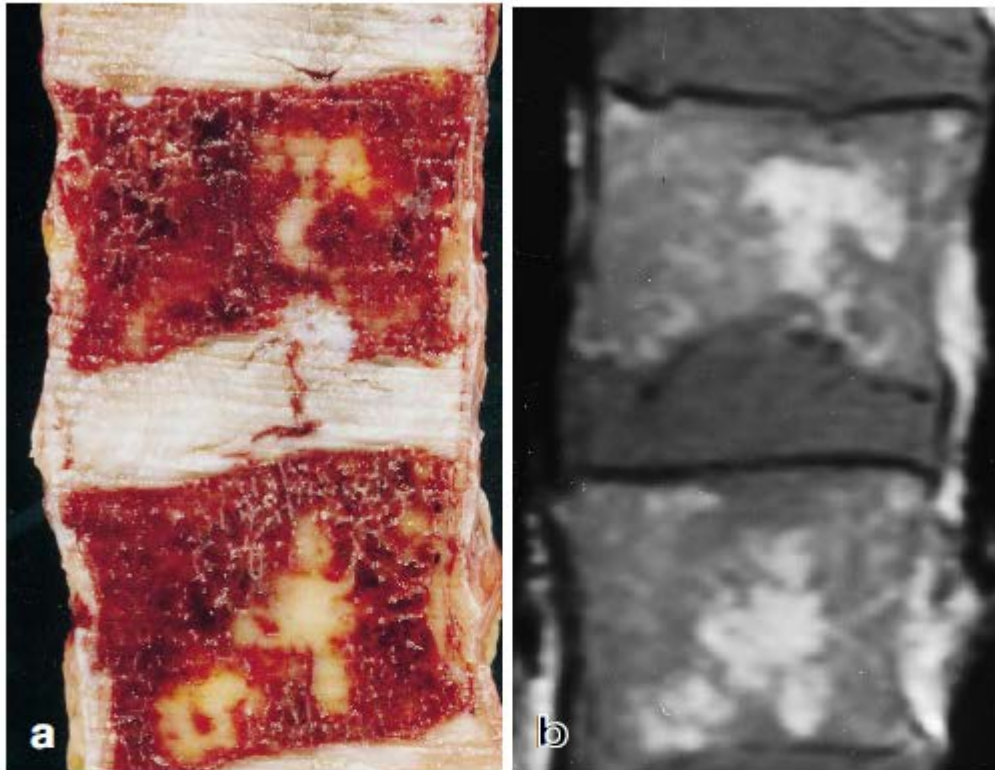
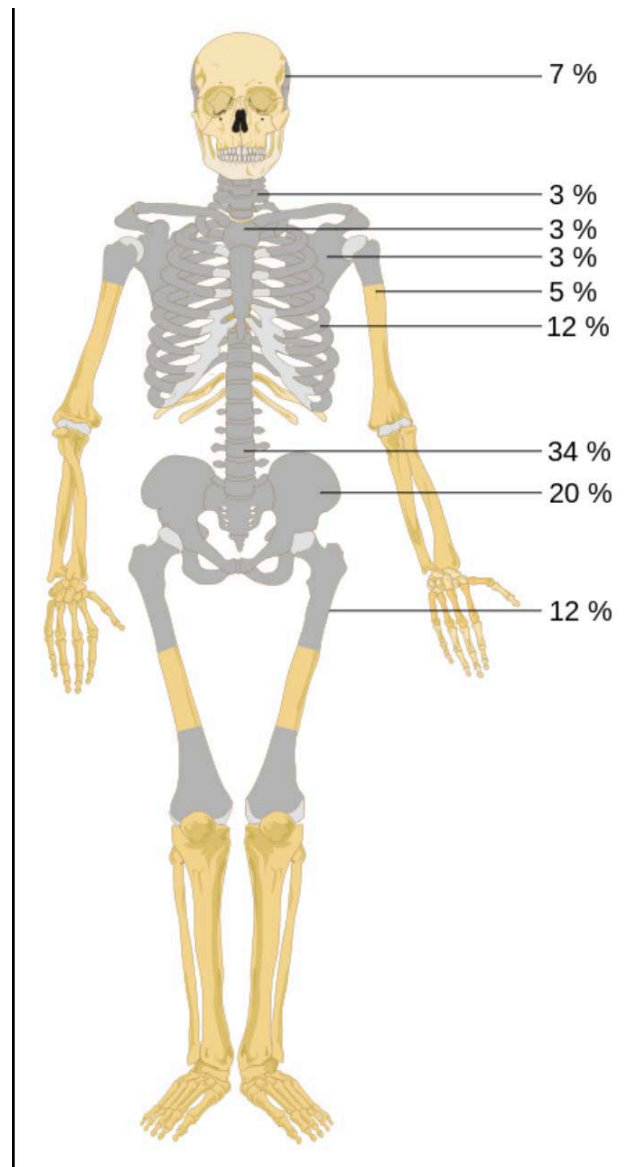
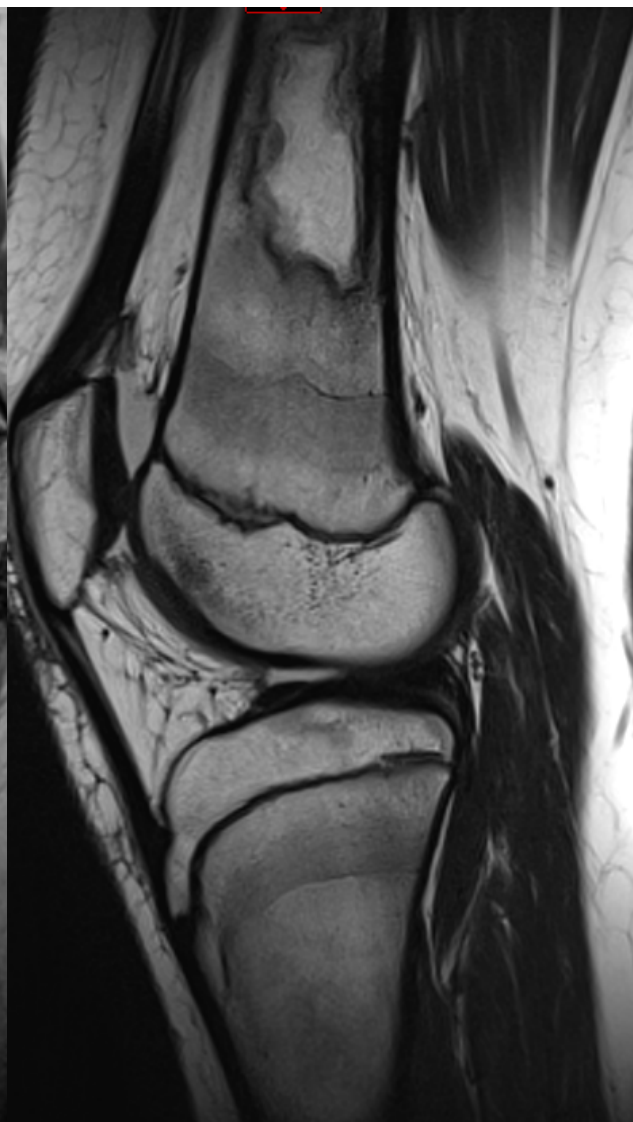
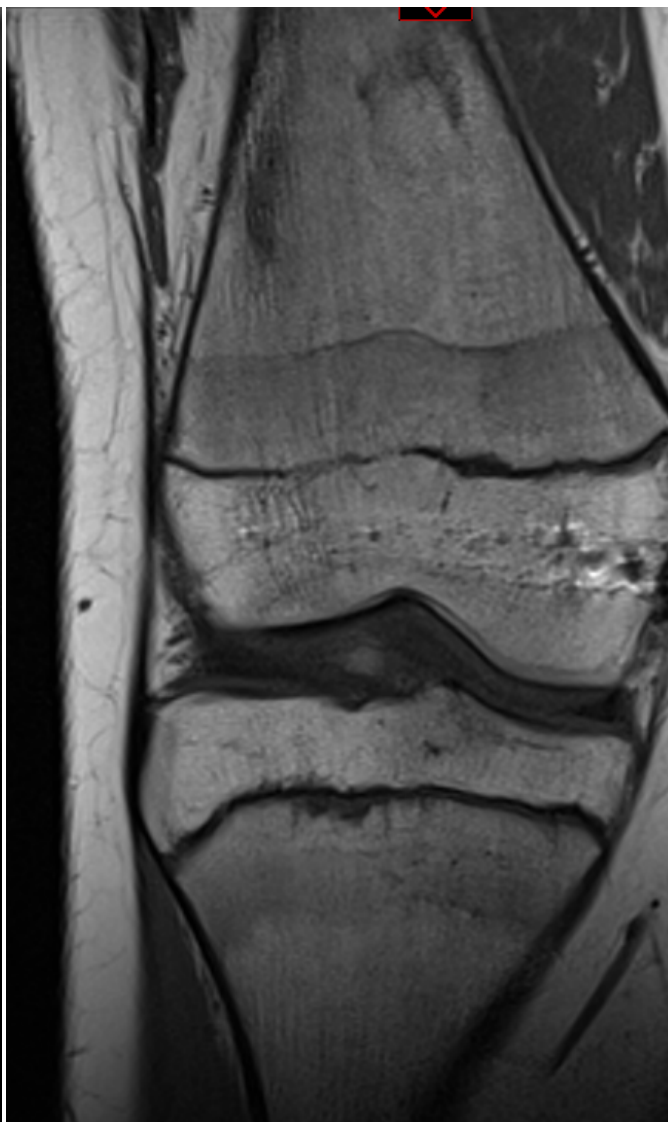


Fig. 1. **a** Macroscopic section of two lumbar vertebral bodies obtained at autopsy from a 69-year-old male who died after heart infarct. Red areas correspond to hematopoietic tissue; yellow areas mainly located in the center of the vertebral bodies correspond to fatty marrow. **b** Sagittal T1-weighted spin-echo MR image of the specimen maps the distribution of red and yellow marrow. Areas of intermediate signal intensity in the vertebral bodies correspond to the red marrow areas on the section; areas of high signal intensity correspond to fatty marrow









Os

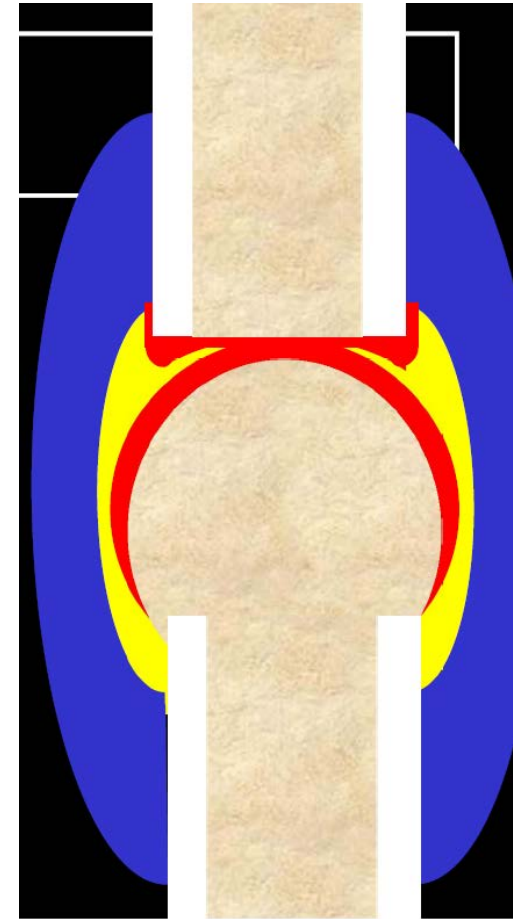
- Os cortical, compact (1)
- Os spongieux
 - Moelle hématopoïétique (2)
 - Moelle grasseuse (3)
- Zones de croissance (4)
- => RX (1) (4)
- => CT (1) (4)
- => IRM (2, 3, 4)
- => US (4)

Cartilages , ligaments, tendons,
synoviale...

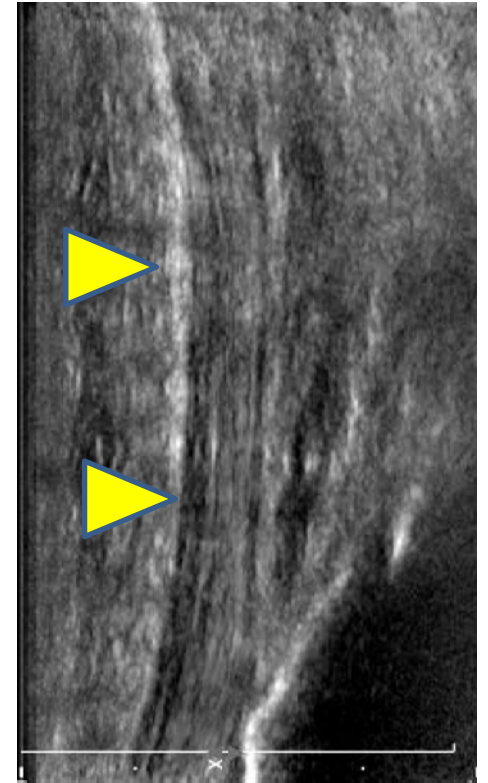
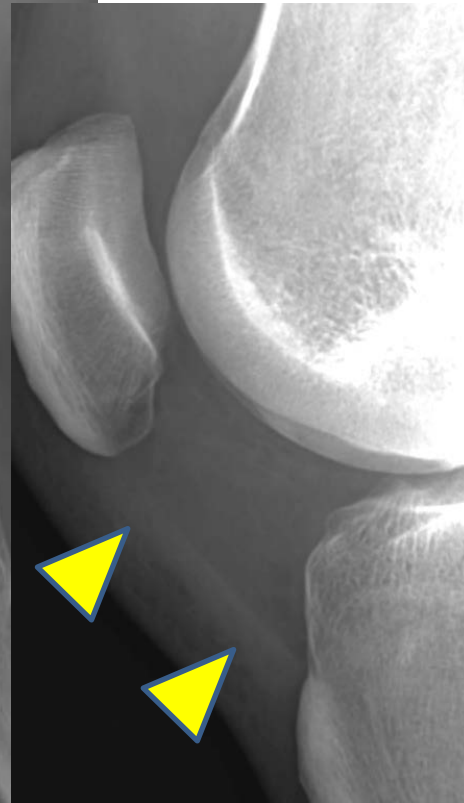
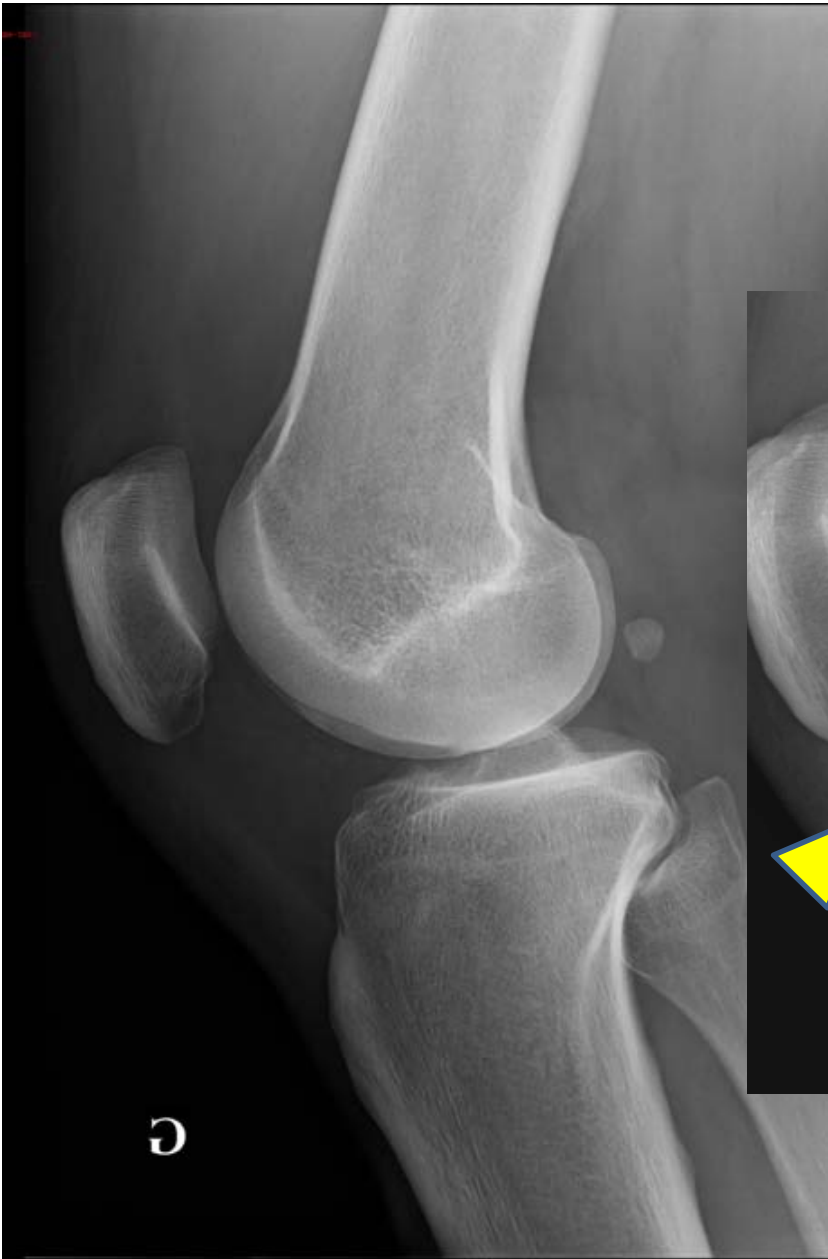
RX US CT IRM

- Cartilage hyalin :
 - Chondrocytes, MEC, collagène
 - Surfaces articulaires
 - la cloison nasale
 - les cartilages [thyroïde](#), [cricoïde](#),
 - Les anneaux [bronchiques](#) et la [trachée](#)
 - l'extrémité des [côtes](#)
 - Sites de l'os en croissance
- Cartilage fibreux (fibrocartilage)
 - Cartilage et tissu conjonctif fibreux
 - Disques intervertébraux
 - Ménisques
- Tendons et ligaments
 - Tissu conjonctif dense , collagène
- Synoviale :
 - Tapisse et limite les cavités articulaires en dehors des surfaces cartilagineuses
 - Synoviocytes et synoviablaste, tissu de soutien
- Capsule articulaire
 - Manchon fibreux
 - Union de deux os qui constituent une articulation

- Tendons et ligaments
 - Tissu conjonctif dense , collagène
- Synoviale : « jaune »
 - Tapisse et limite les cavités articulaires en dehors des surfaces cartilagineuses
 - Synoviocytes et synoviablaste, tissu de soutien
- Capsule articulaire : « bleu »
 - Manchon fibreux
 - Union de deux os qui constituent une articulation

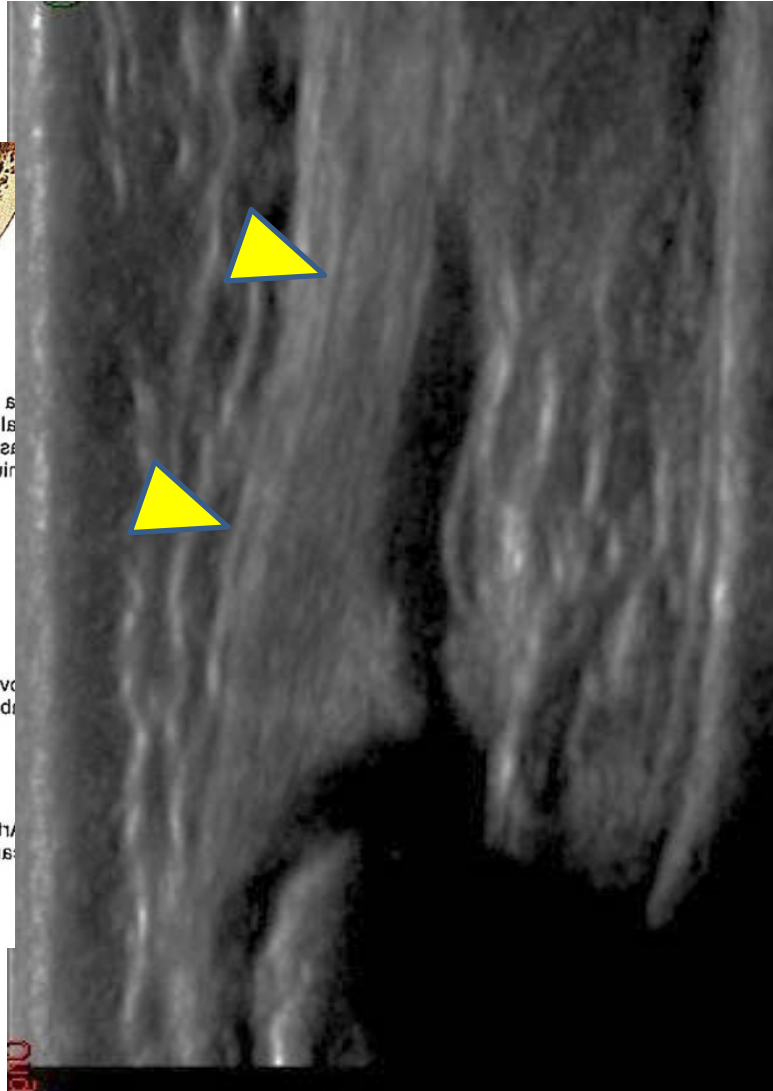
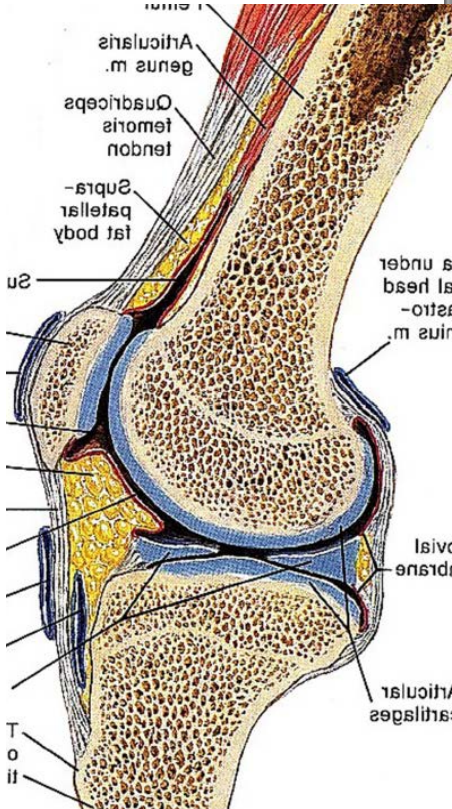


Tendons



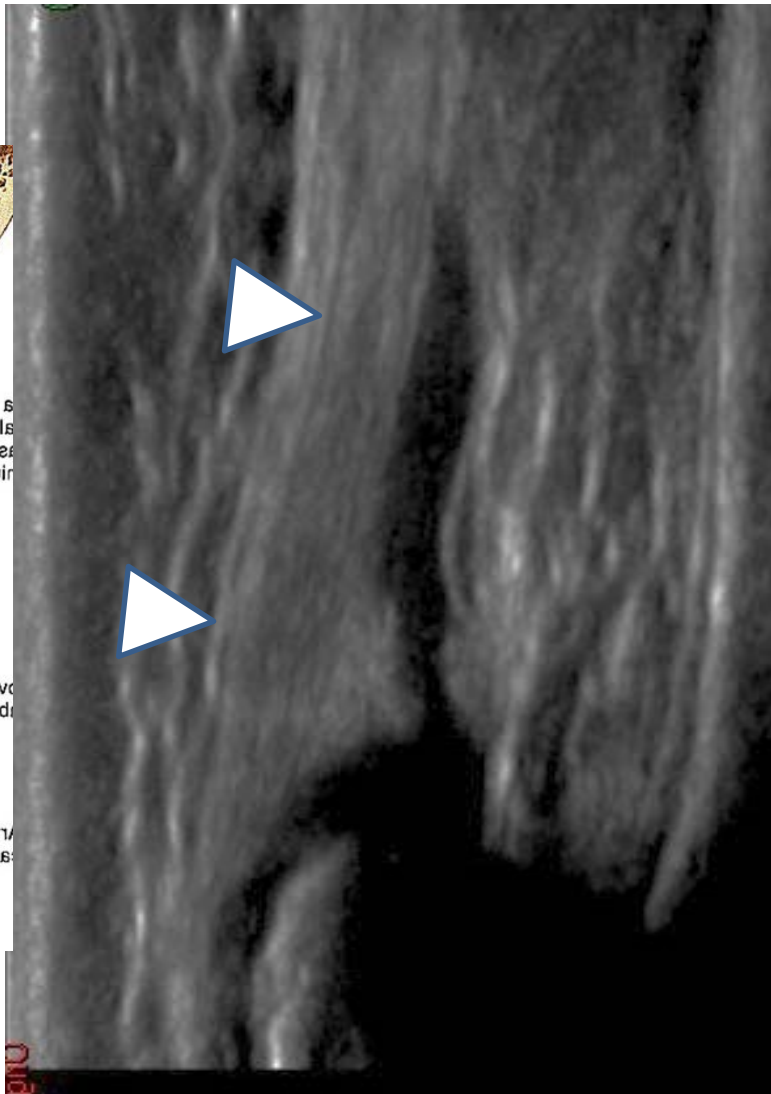
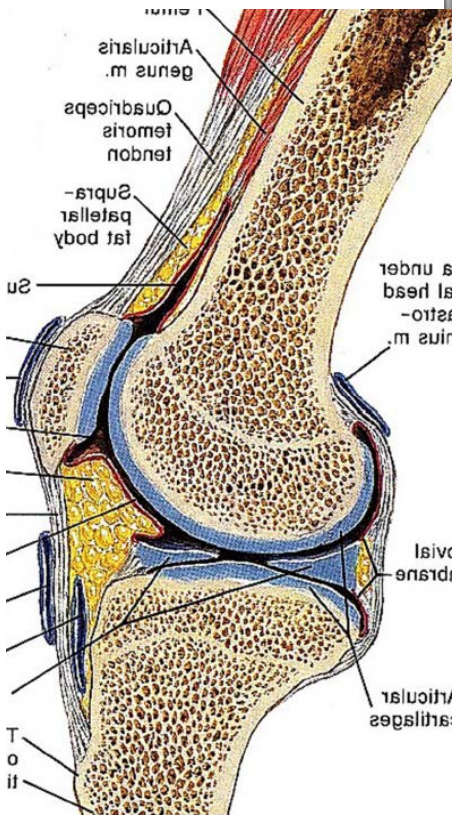
Tendon sous rotulien

Tendons



Tendon sus rotulien

Tendons

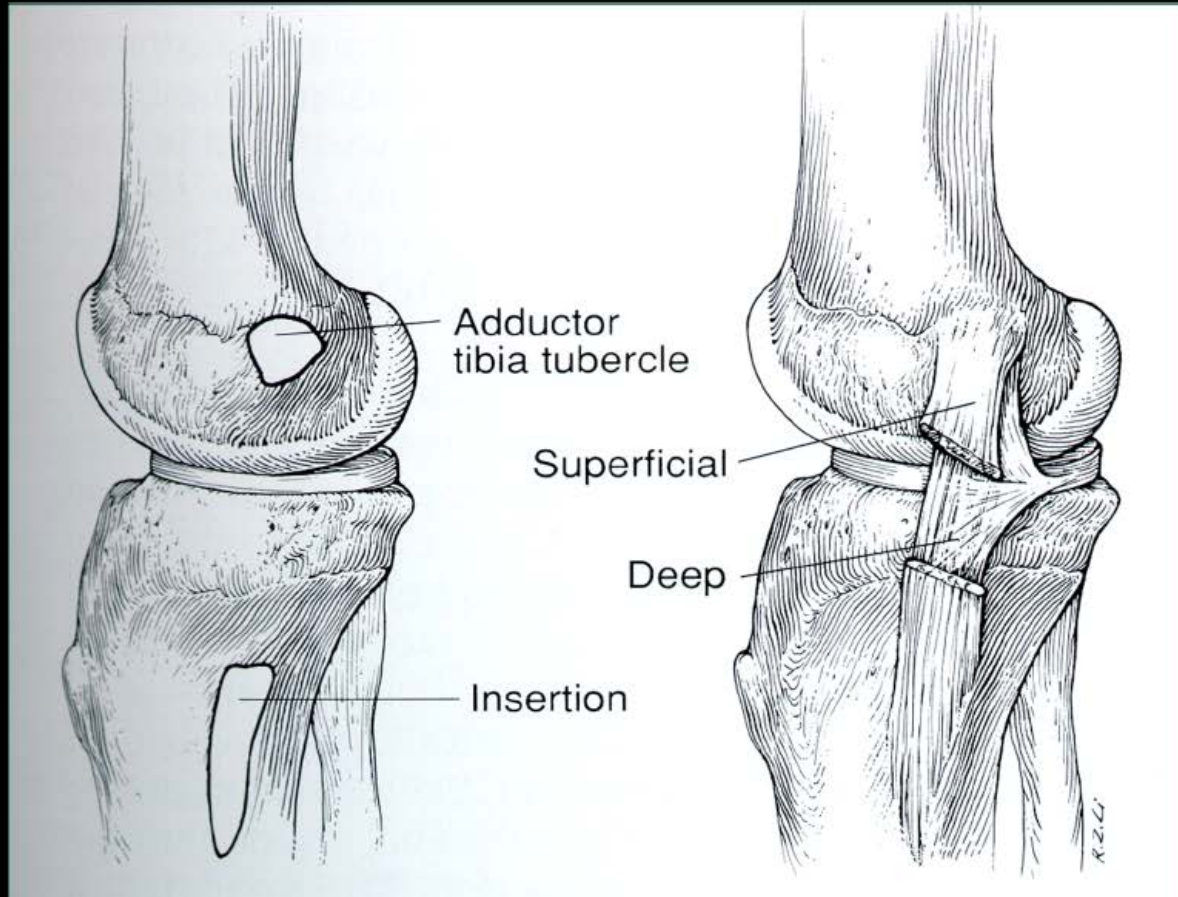


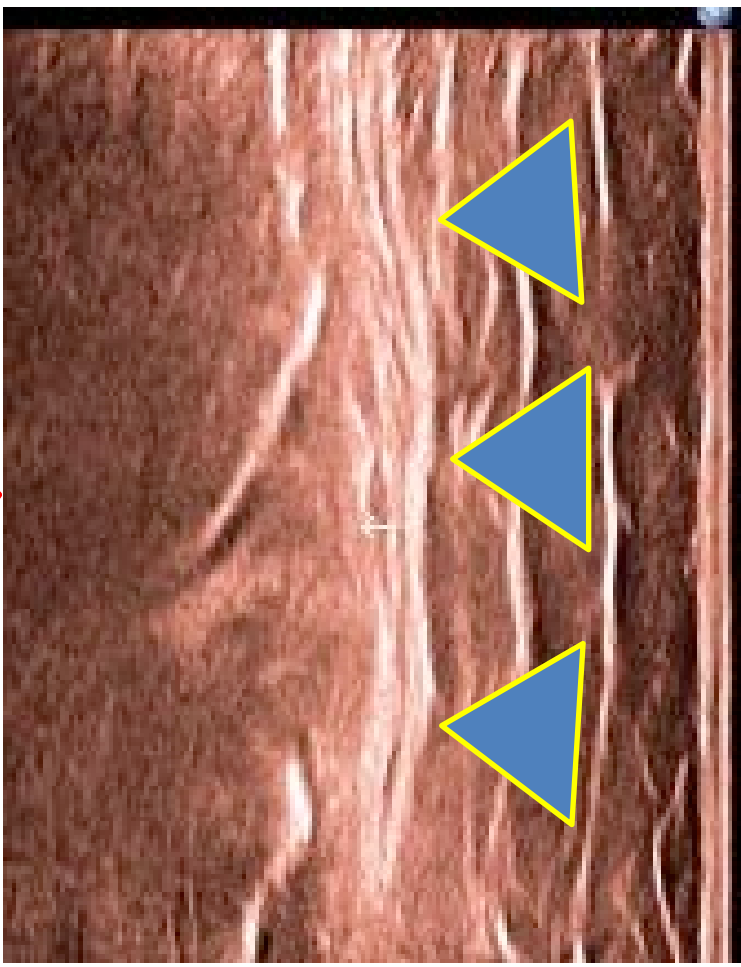
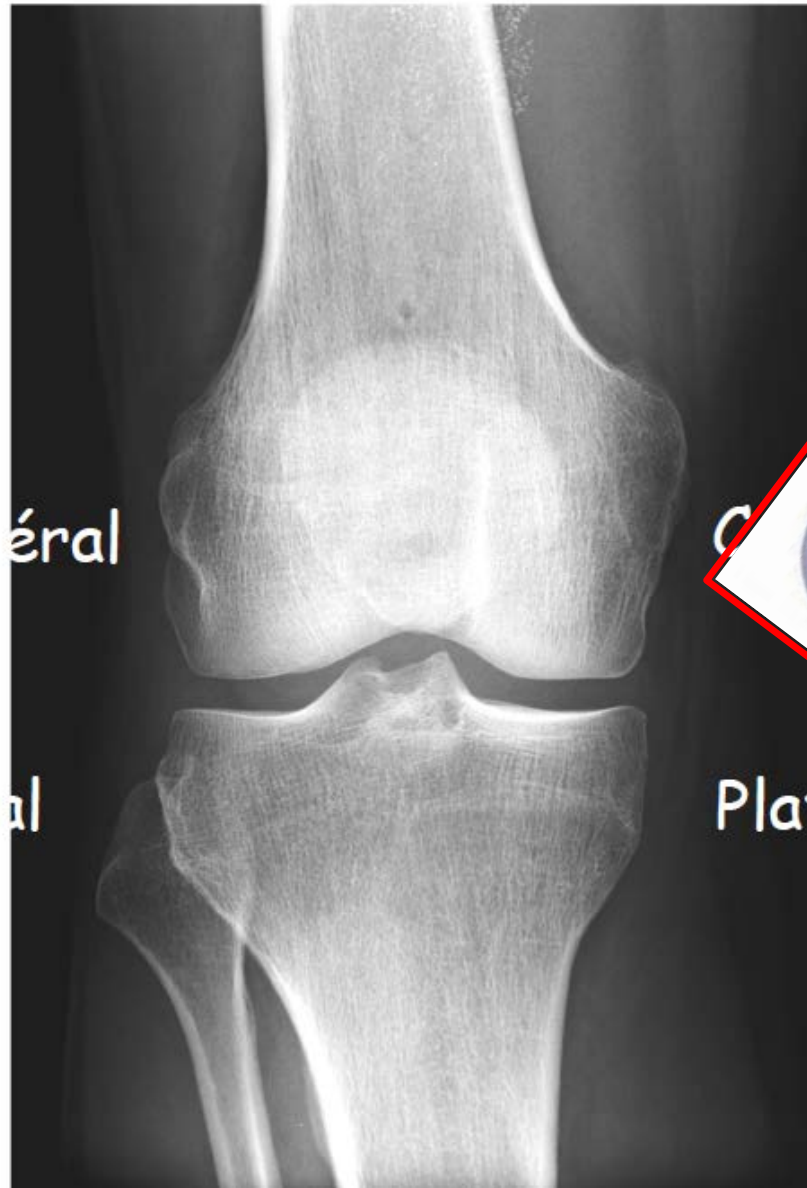
Tendons



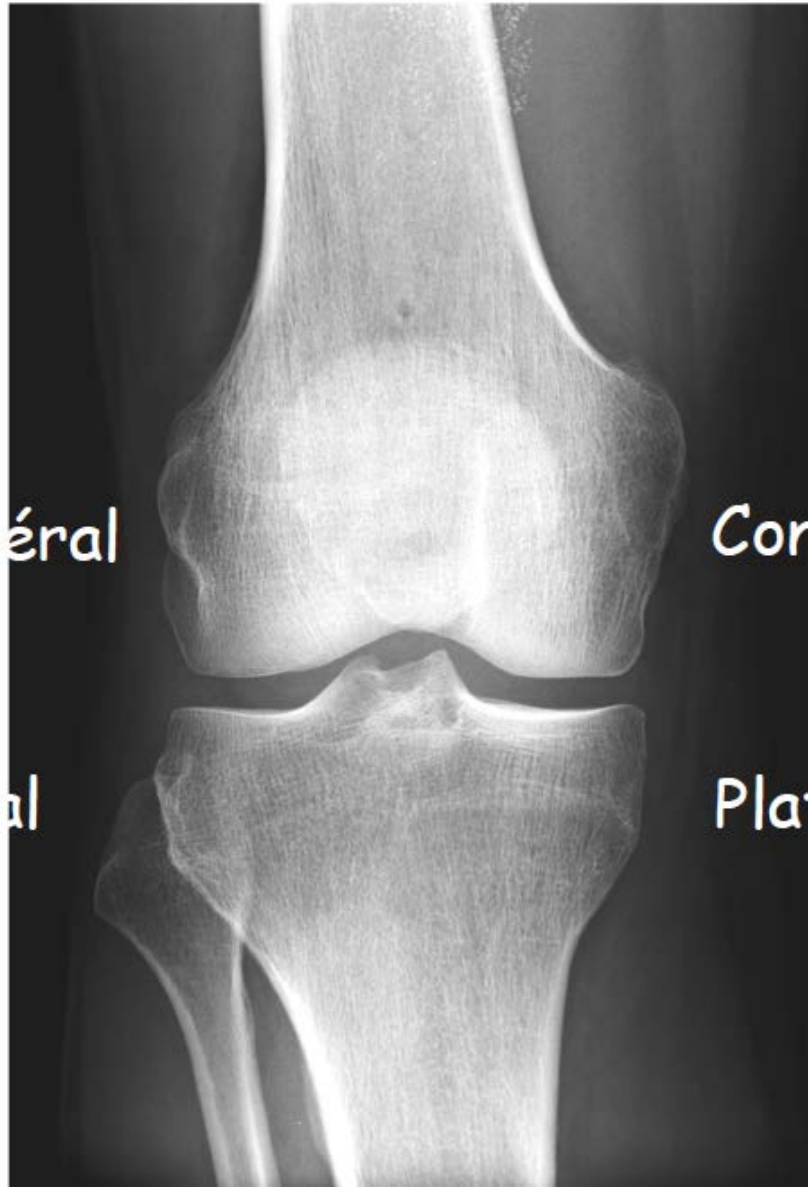
Tendon sus rotulien

Ligament collatéral médial





Ligament collatéral médial



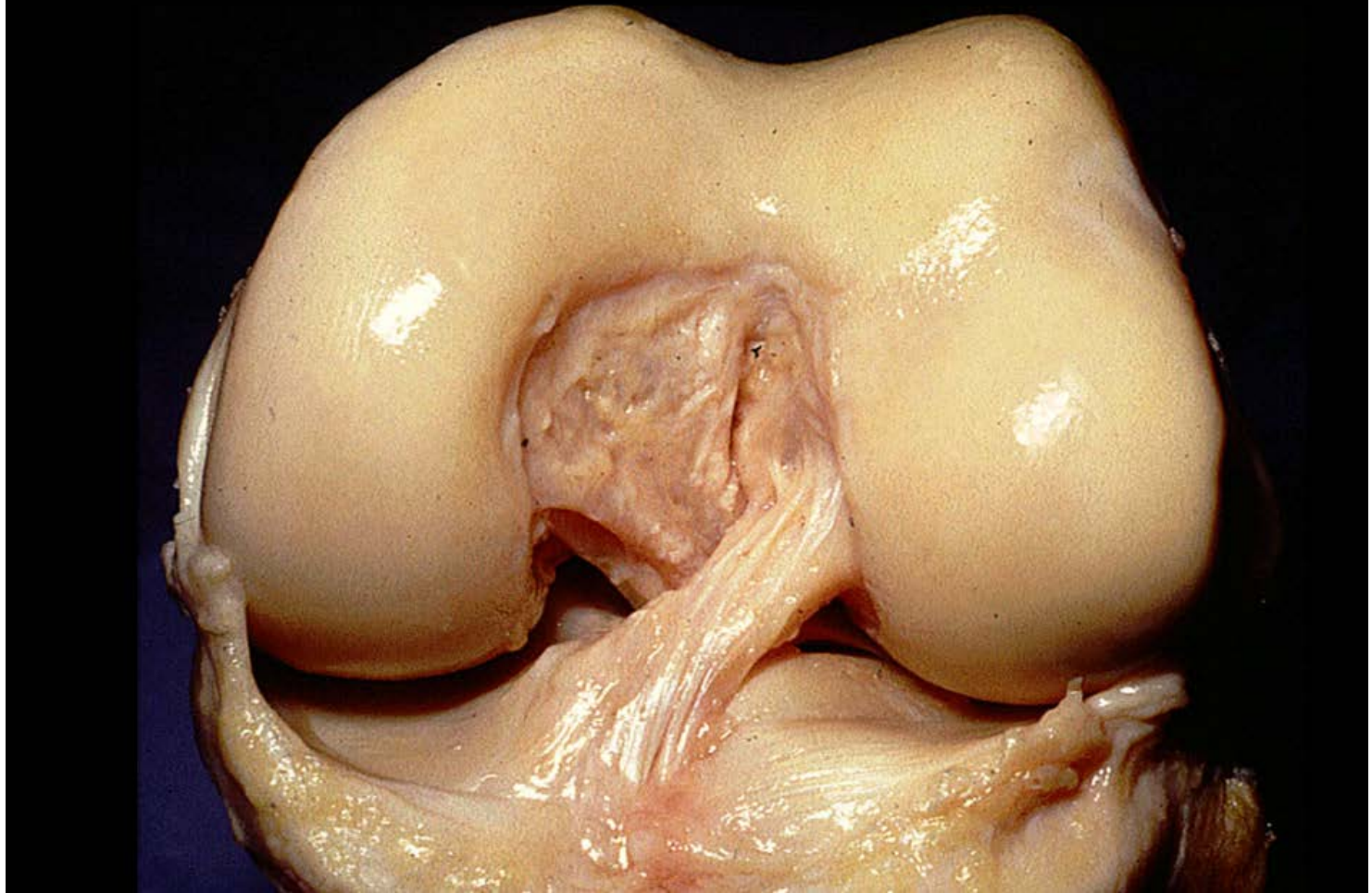
Insertion proximale
du faisceau superficiel
du ligament collatéral médial

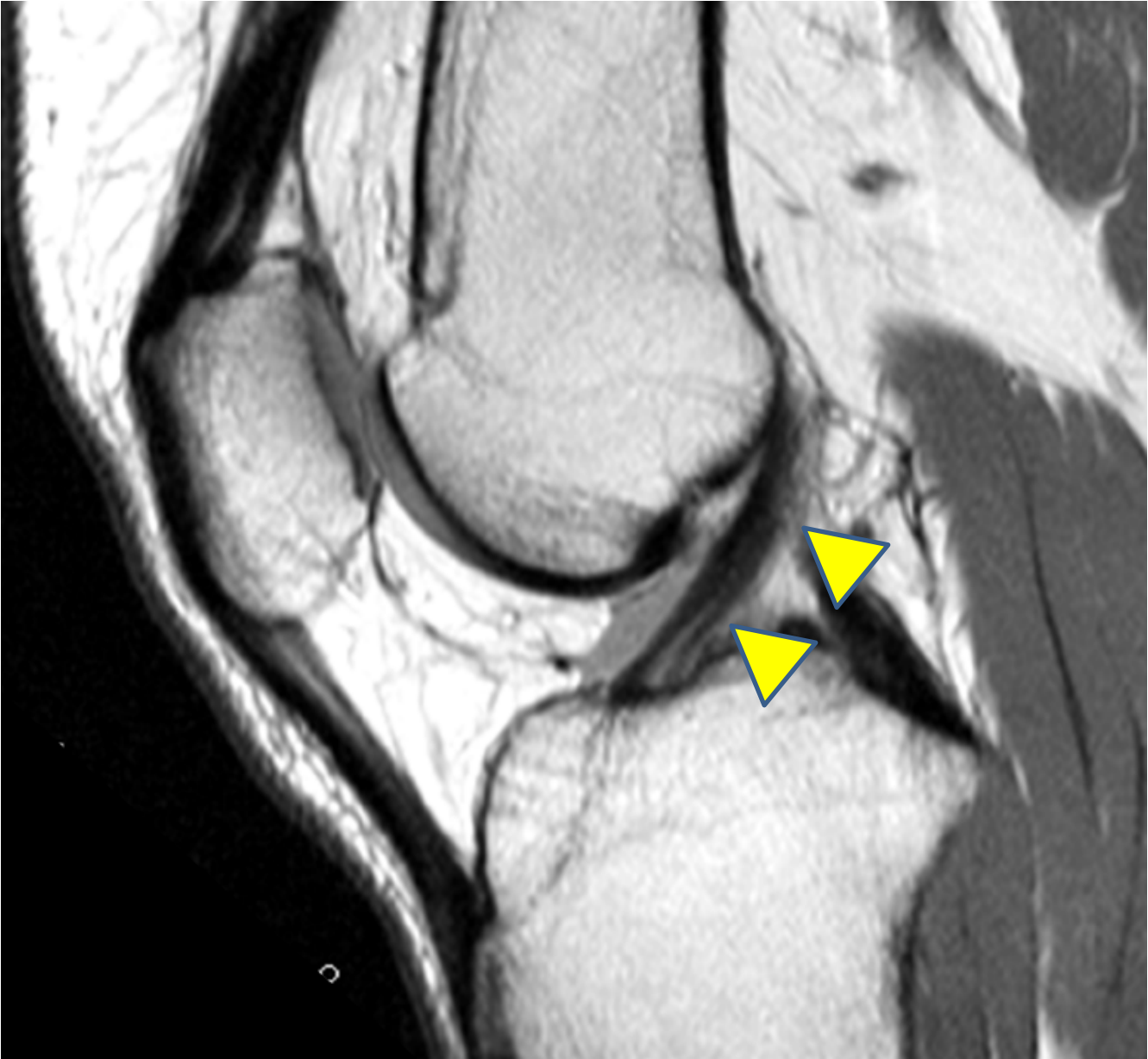




Ligament collatéral médial

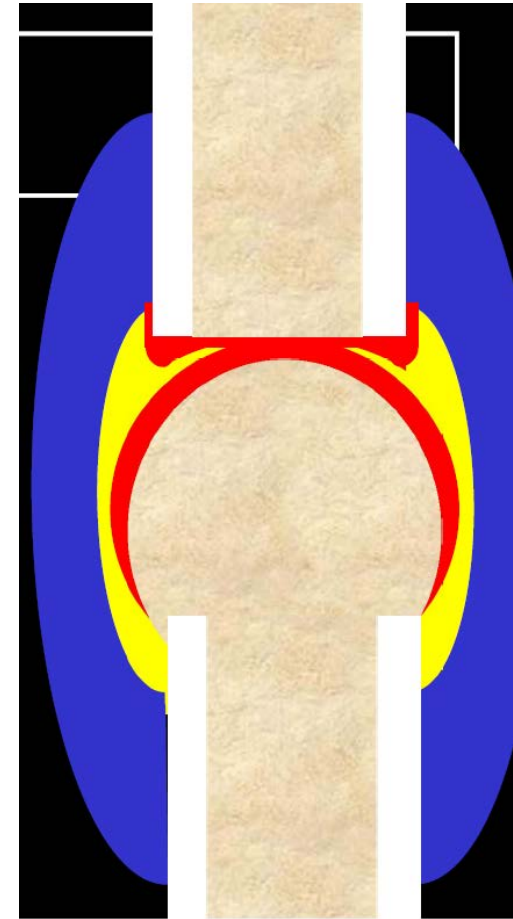
Ligament croisé antérieur (LCA)





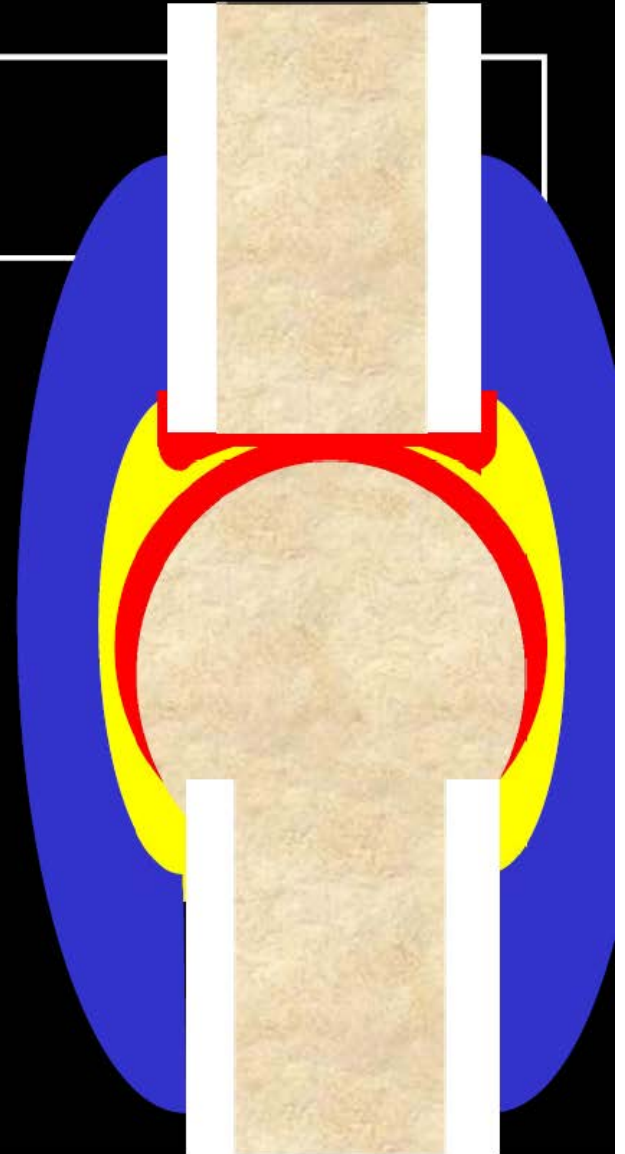
LCA

- Tendons et ligaments
 - Tissu conjonctif dense , collagène
- Synoviale : « jaune »
 - Tapisse et limite les cavités articulaires en dehors des surfaces cartilagineuses
 - Synoviocytes et synoviablaste, tissu de soutien
- Capsule articulaire : « bleu »
 - Manchon fibreux
 - Union de deux os qui constituent une articulation



Anatomie articulaire

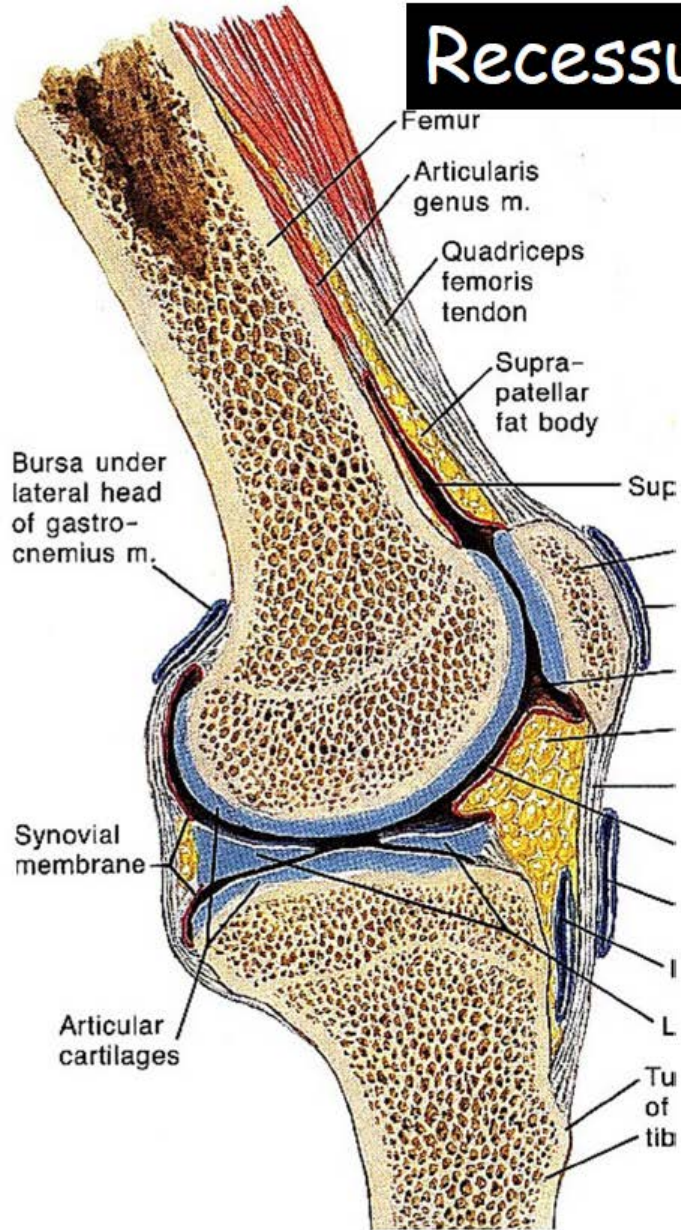
- **espace articulaire**
 - capsule
 - cartilage



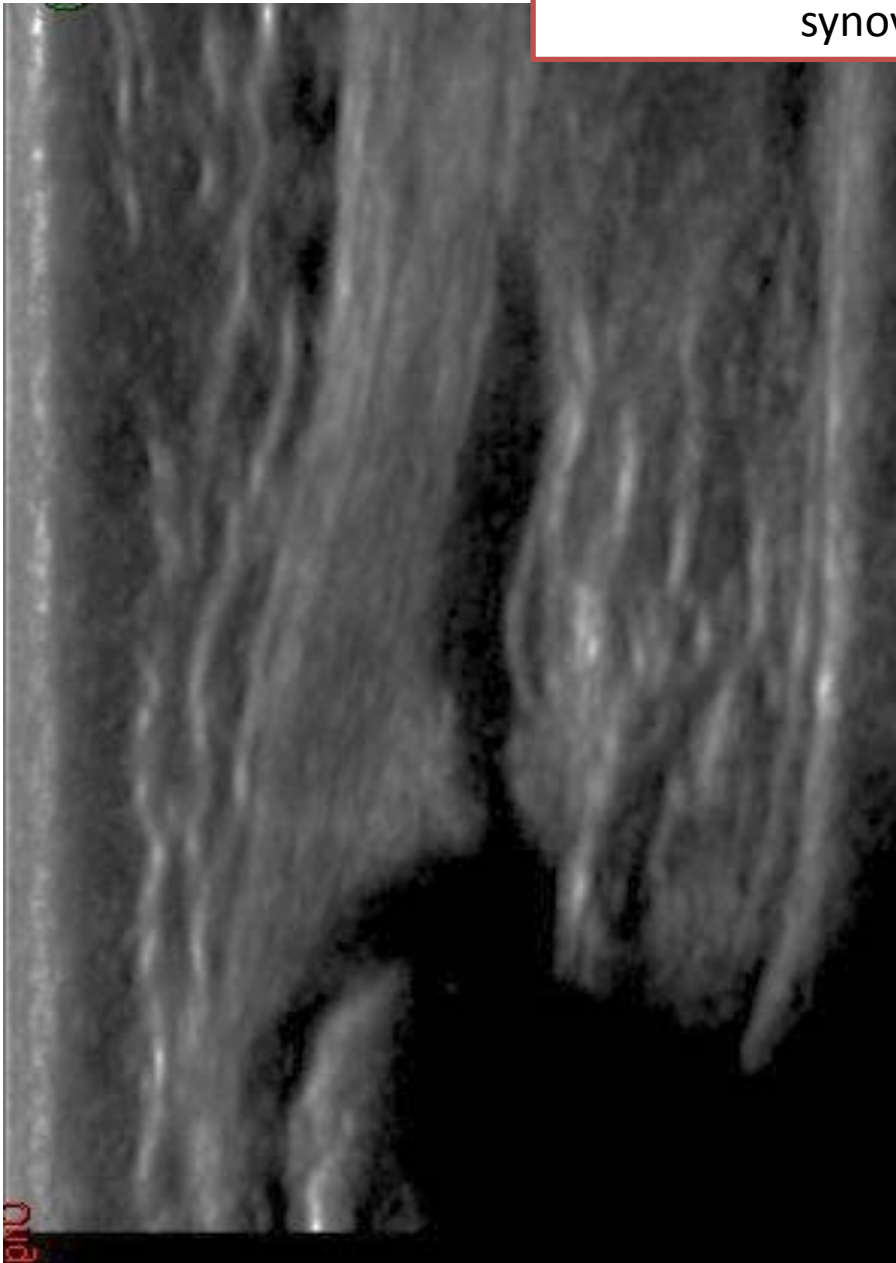
synoviale



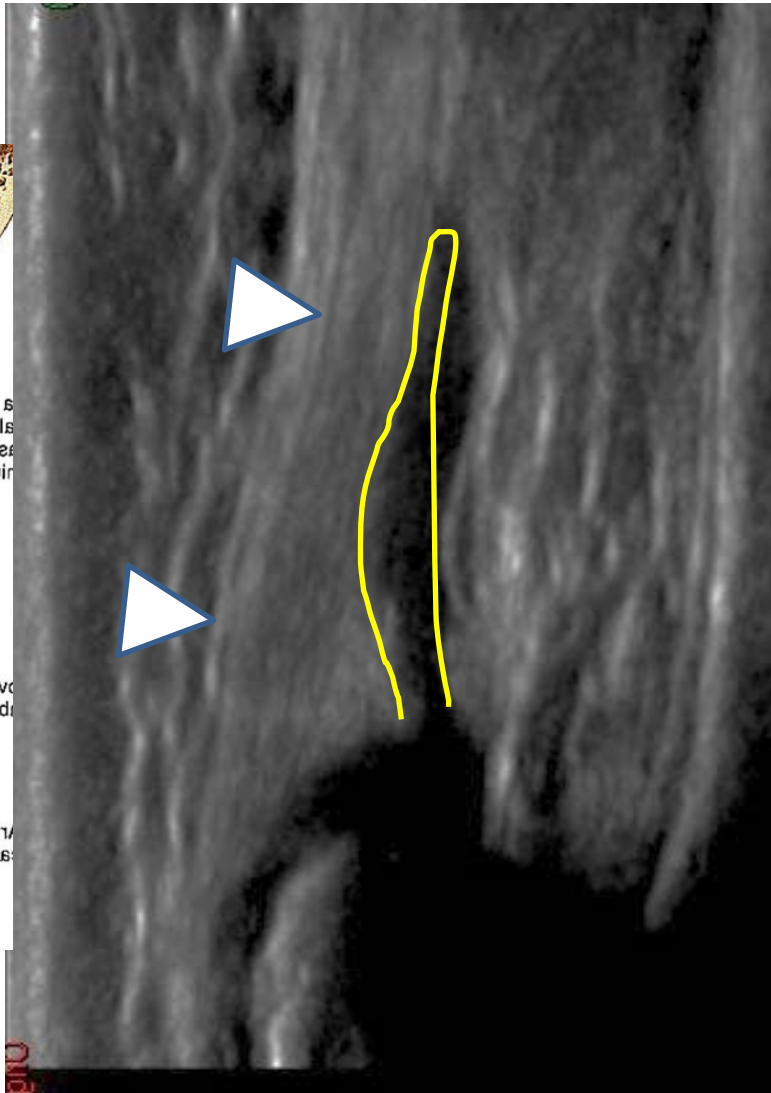
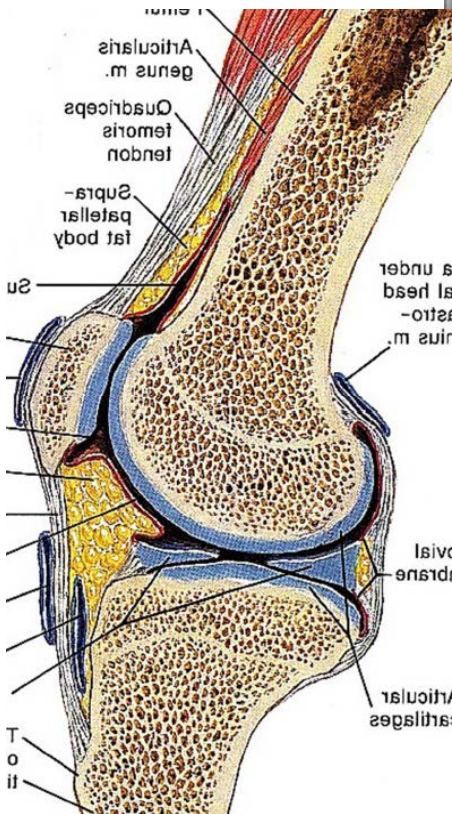
Recessus sous-quadricepsital



synoviale



Prof Ph Clapuyt, radiologie pédiatrique



Prof Ph Clapuyt, radiologie pédiatrique

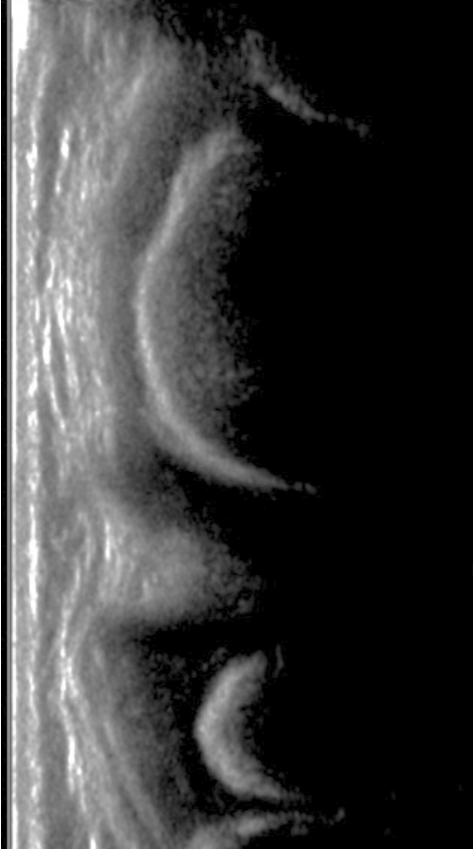
synoviale





- Cartilage hyalin :
 - Chondrocytes, MEC, collagène
 - Surfaces articulaires
 - cloison nasale
 - cartilages [thyroïde](#), [cricoïde](#),
 - anneaux [bronchiques](#) et la [trachée](#)
 - l'extrémité des [côtes](#)
 - Sites de l'os en croissance
- Cartilage fibreux (fibrocartilage)
 - Cartilage et tissu conjonctif fibreux
 - Disques intervertébraux
 - Ménisques

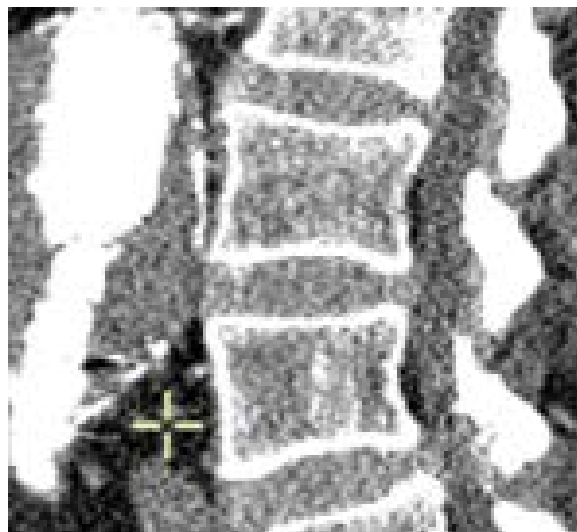




Prof Ph Clapuyt, radiologie pédiatrique







Cartilage fibreux (fibrocartilage)
Cartilage et tissu conjonctif fibreux
Disques intervertébraux
Ménisques

**Menisque
médial**

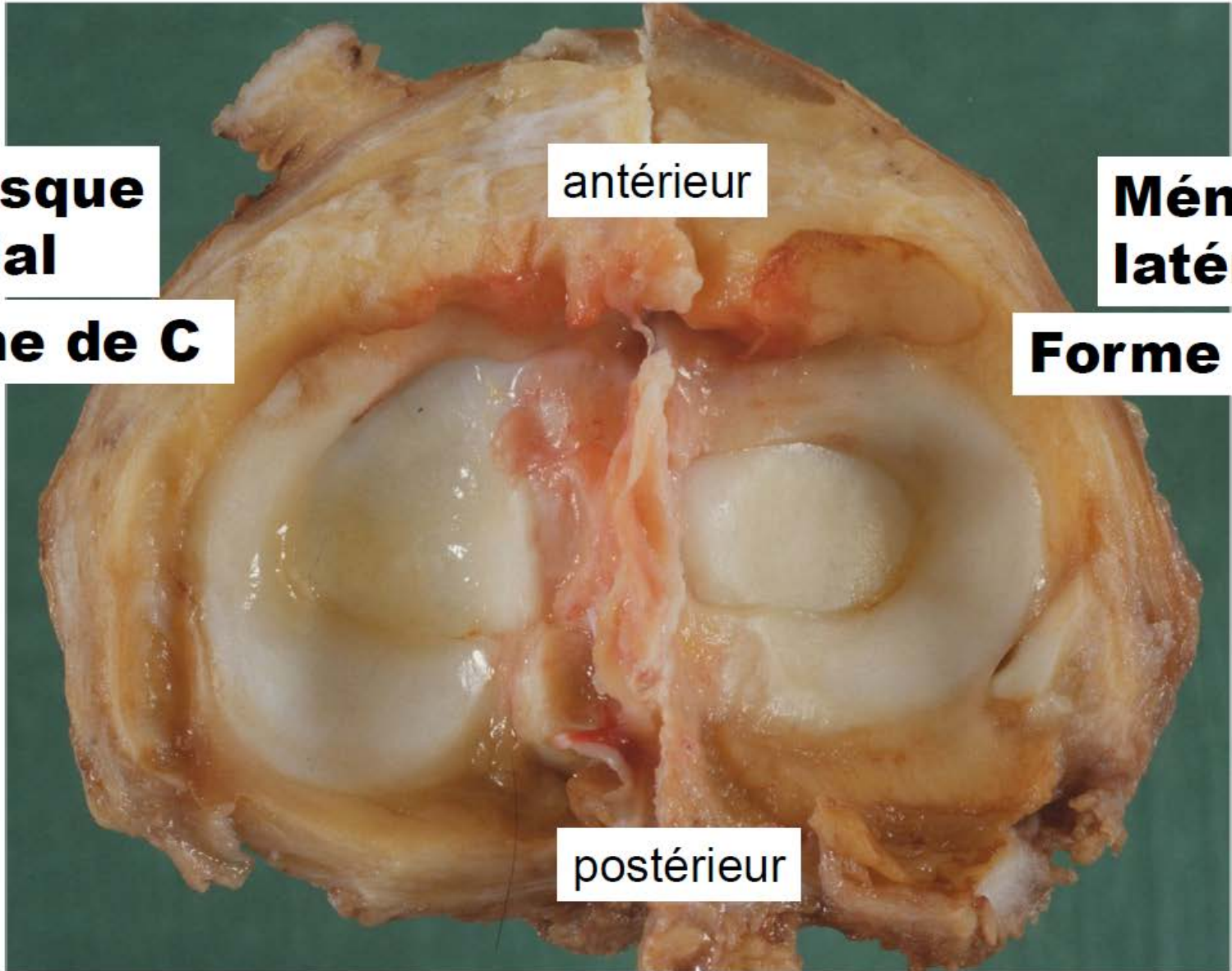
Forme de C

antérieur

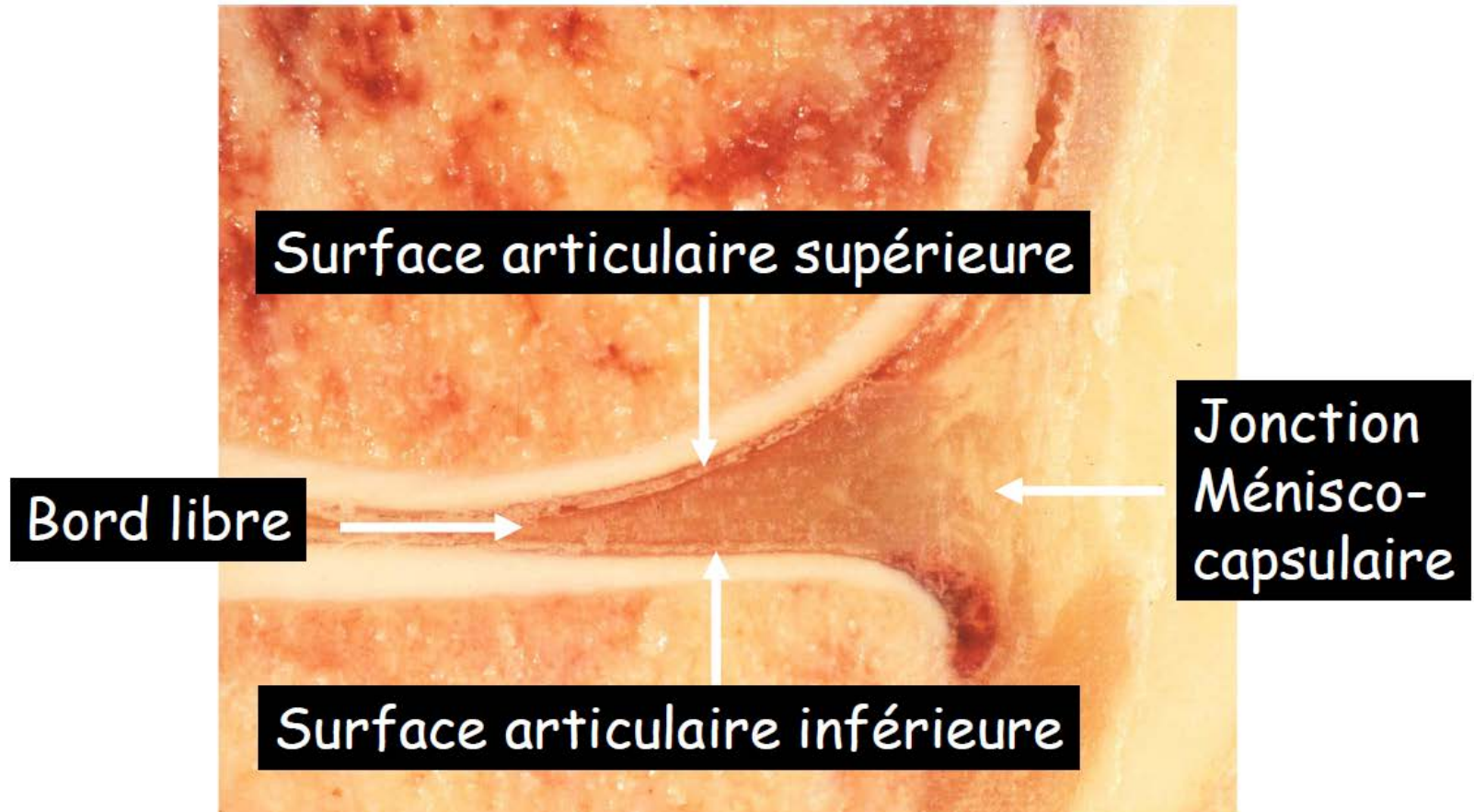
**Ménisque
latéral**

Forme de O

postérieur



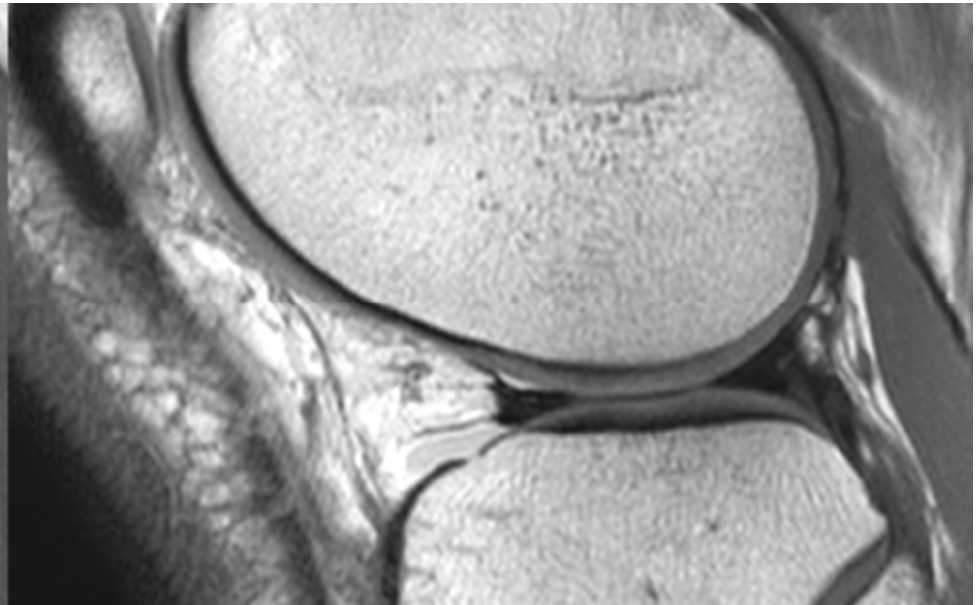
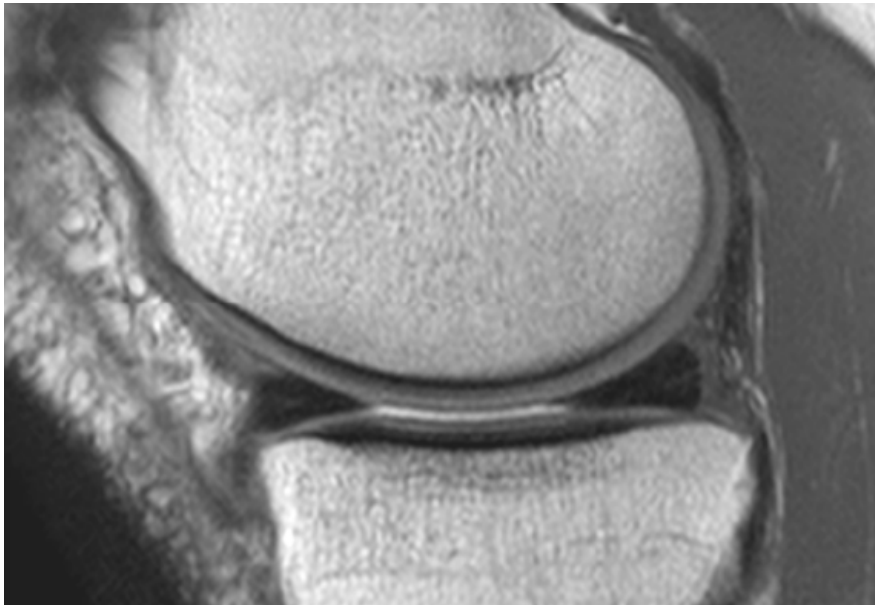
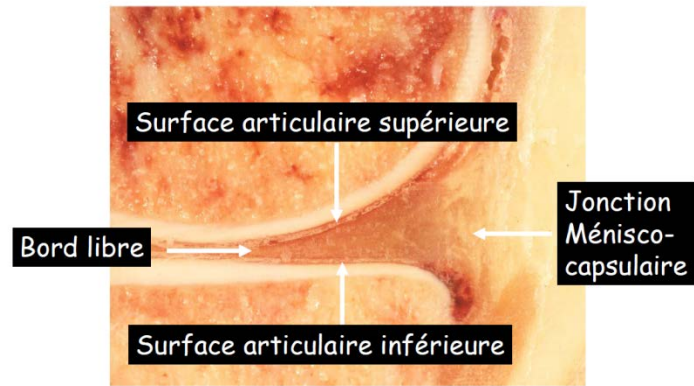
Anatomie en coupe du ménisque





Ménisque interne

Anatomie en coupe du ménisque



Quelle structure et quelle technique ?

| | RX simple | US | (arthro) CT | IRM |
|-----------------------|-----------|----|-------------|-----|
| OS cortical | + | - | + | -+ |
| Os spongieux | - | - | +-= | ++ |
| Cartilages | - | - | ++ | + |
| Tendons- ligaments | - | +- | +- | + |
| Ménisques | - | +- | + | + |



RX : os US : tendon



CT : os et cartilage

