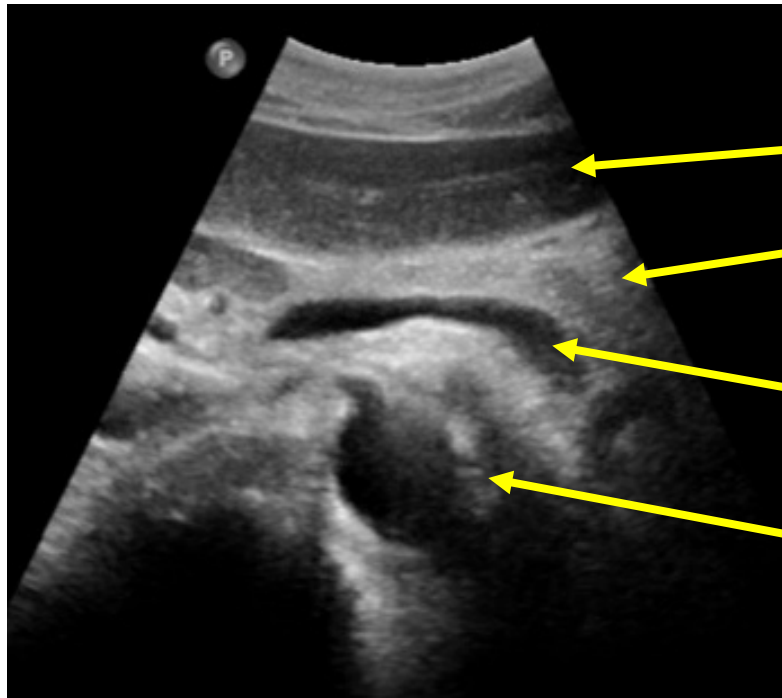


Anatomie radiologique abdominale normale

Echographie: mode B, Doppler couleur

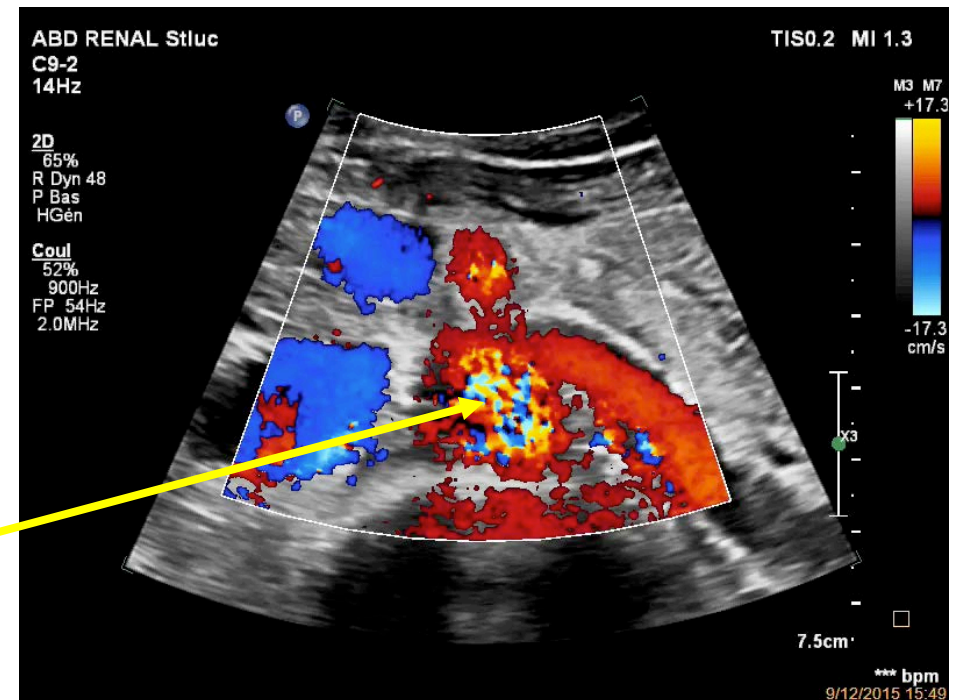


Foie

Pancréas

Veine
splénique

Aorte



Coupe transversale, au niveau du pancréas

CI 7Hz
R1

Tissu
82%
C 42
Rés
IM0.04

Contraste
82%
C 38
GénC
IM0.08



CT et IRM et injection IV de Contraste

- 1. Phase artérielle (néphrographie vasculaire /corticale)
 - 15 - 90 s
- 2. Phase portale (néphrographie tubulaire)
 - Optimum : 70 -90 s
- 3. Phase tardive (excrétoire) :
 - après 3-5min
 - Opacification des cavités pyélocalicielles

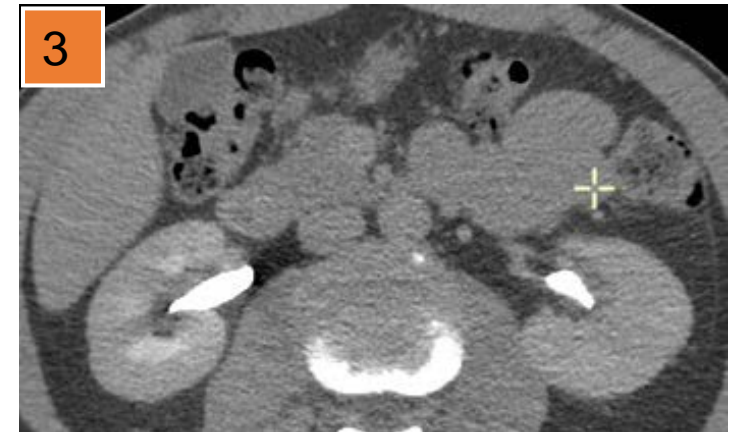
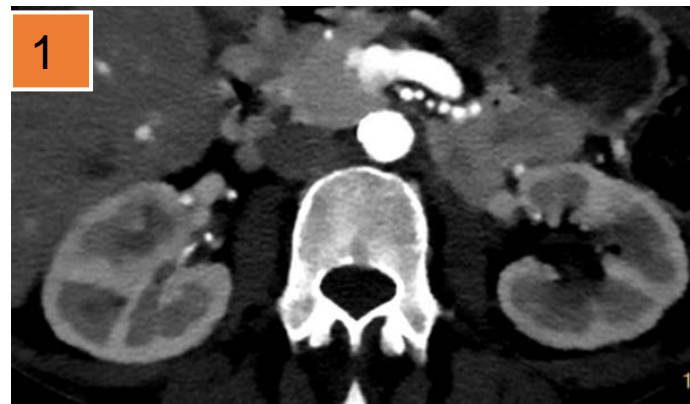
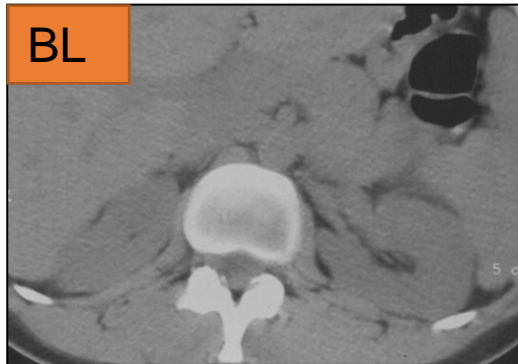
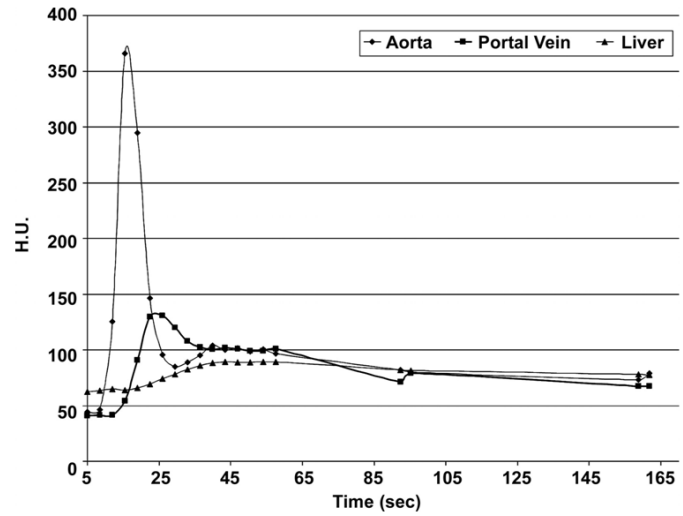


Figure 4b. CT liver perfusion images and graph that shows enhancement curves.



Pandharipande P V et al. Radiology 2005;234:661-673

Radiology

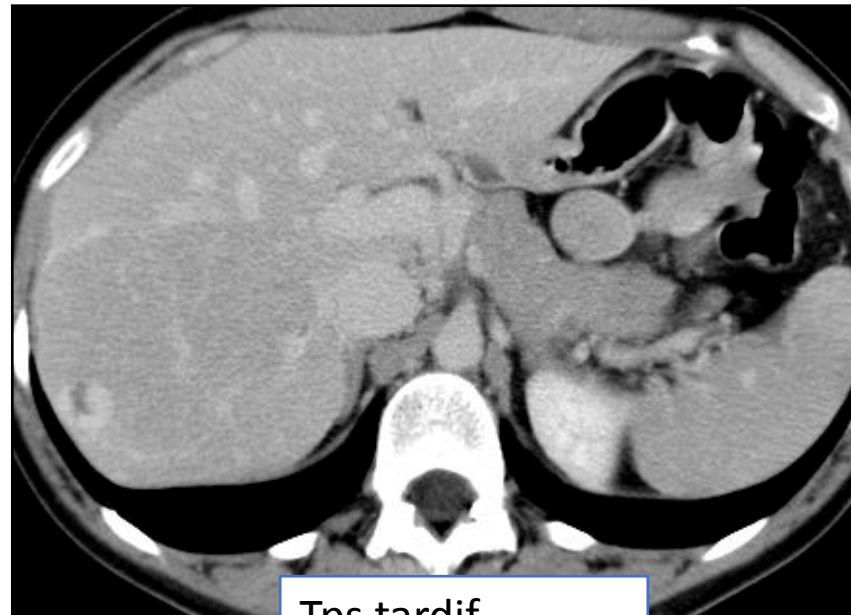
© 2005 by Radiological Society of North America



Tps artériel

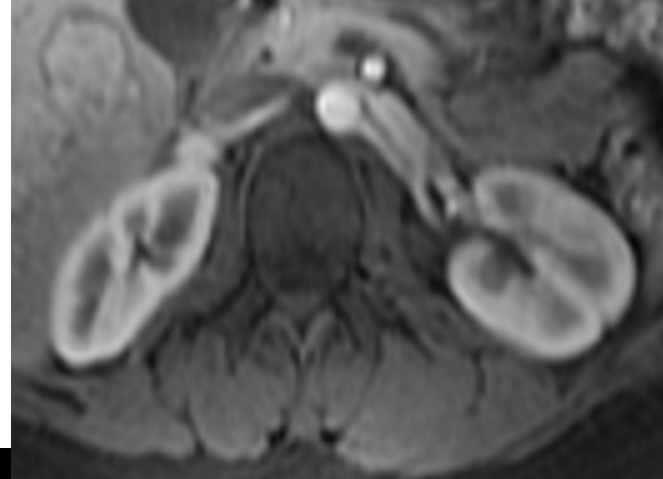
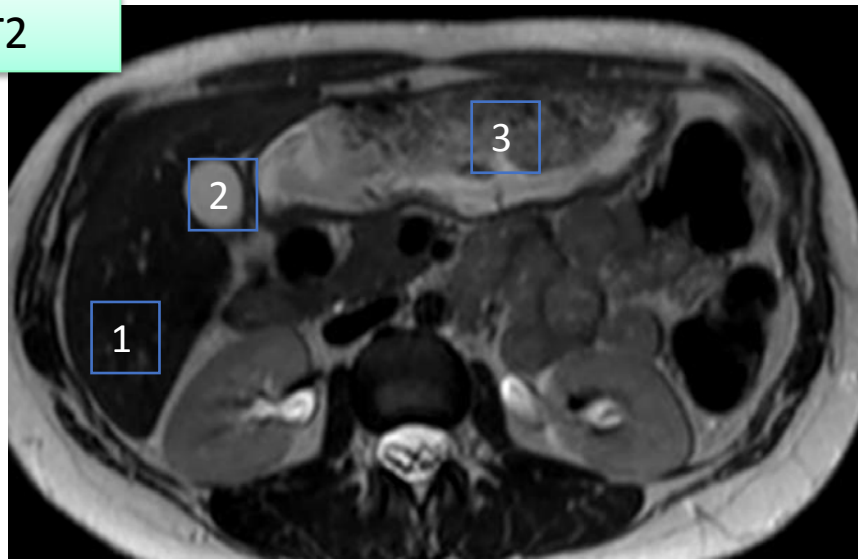


Tps portal



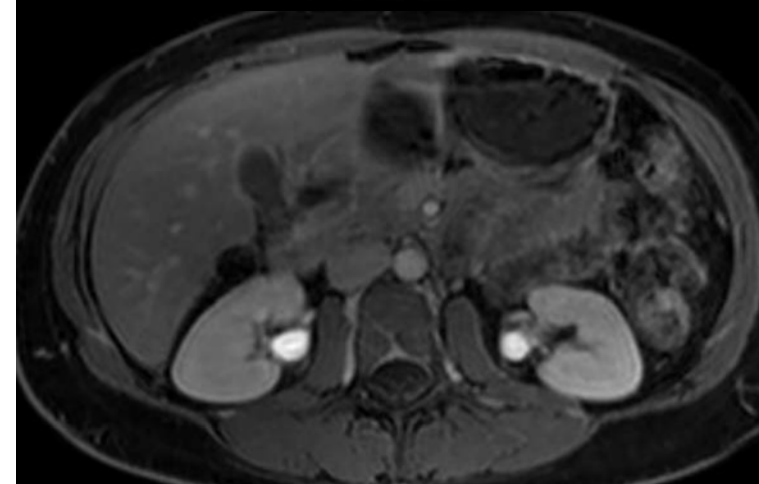
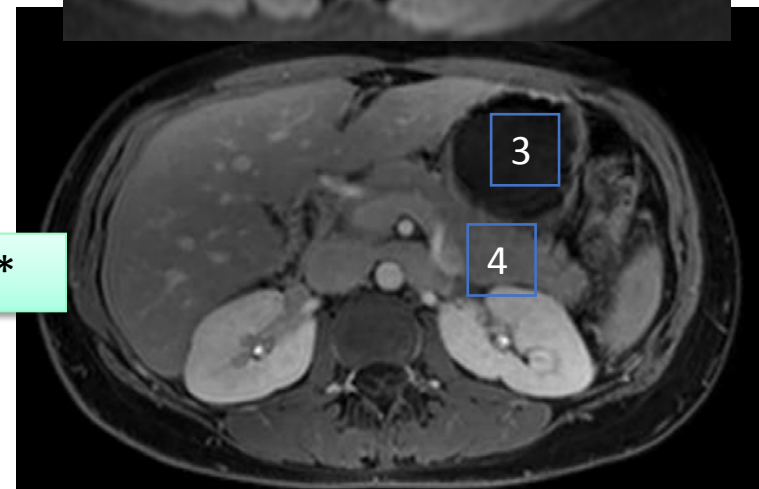
Tps tardif

T2

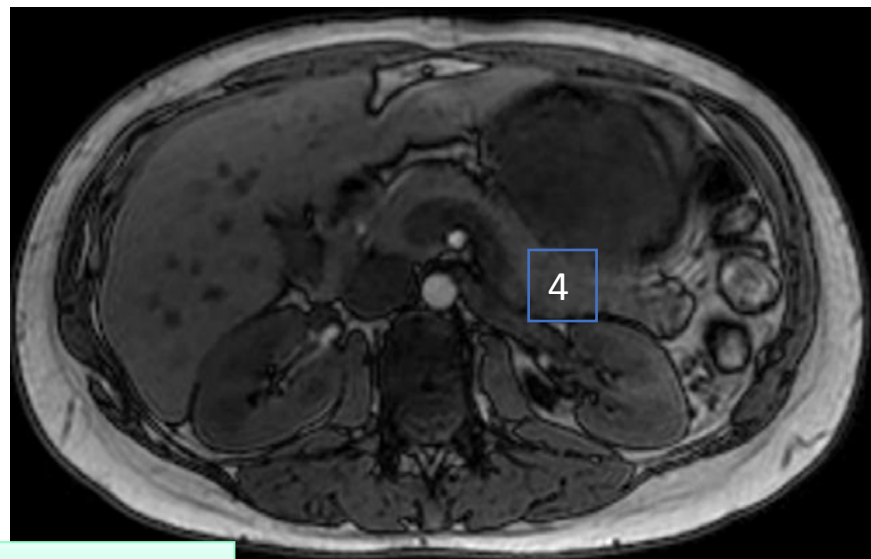


1. Foie
2. Vésicule
3. Estomac
4. Pancréas

T1 + C*

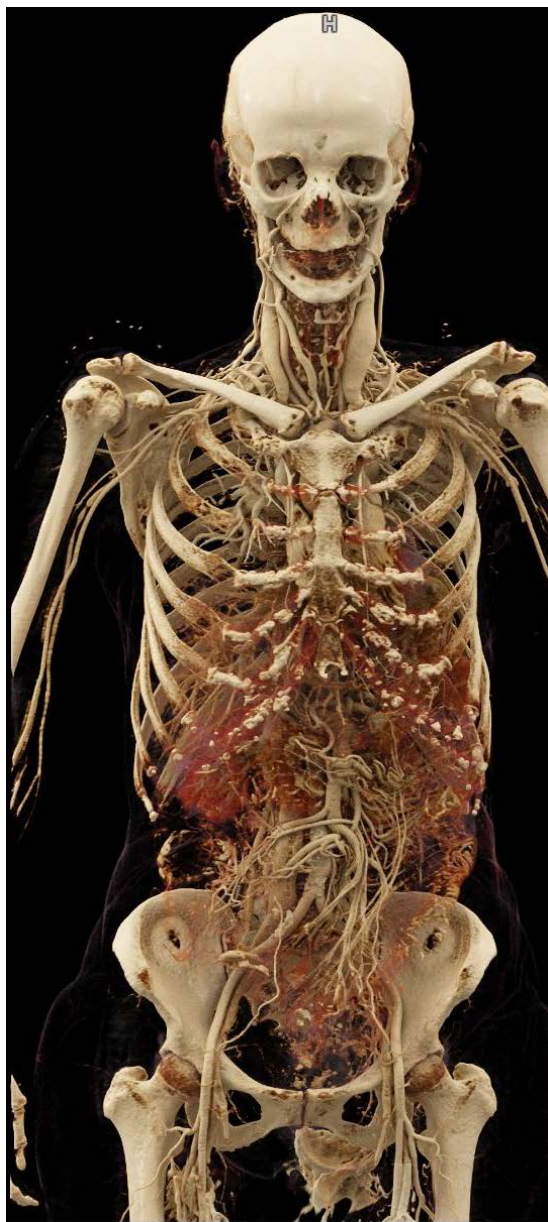


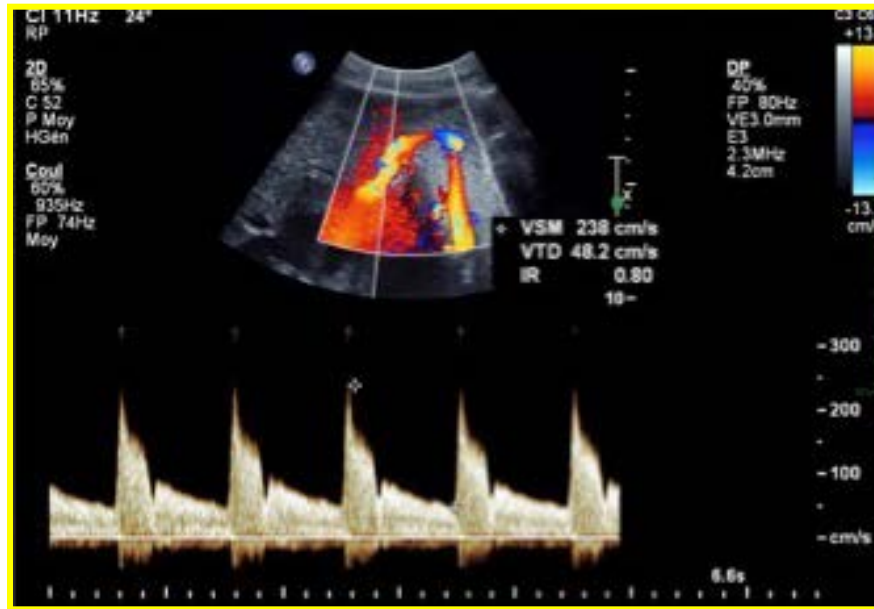
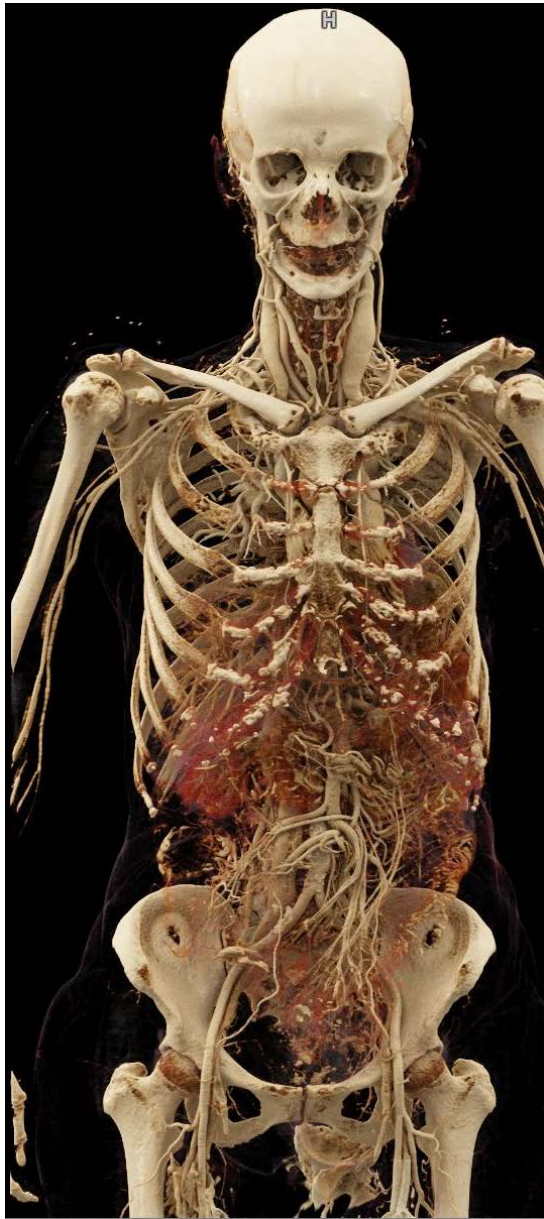
T1 sans C*





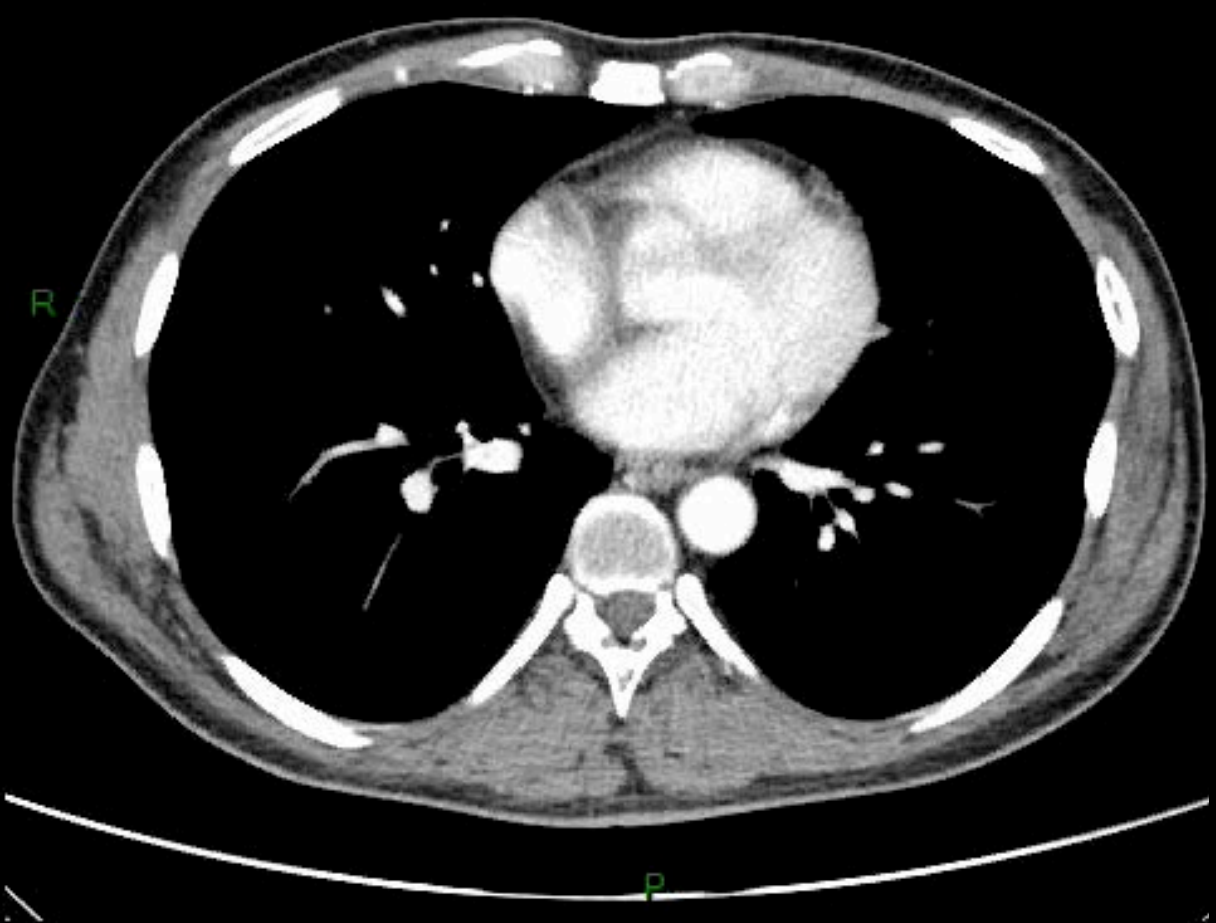
- Vaisseaux:
 - artères, veines
- Parenchymes pleins :
 - foie, reins, pancréas, rate
- Organes creux :
 - tube digestif
- Voies biliaires
- Voies urinaires





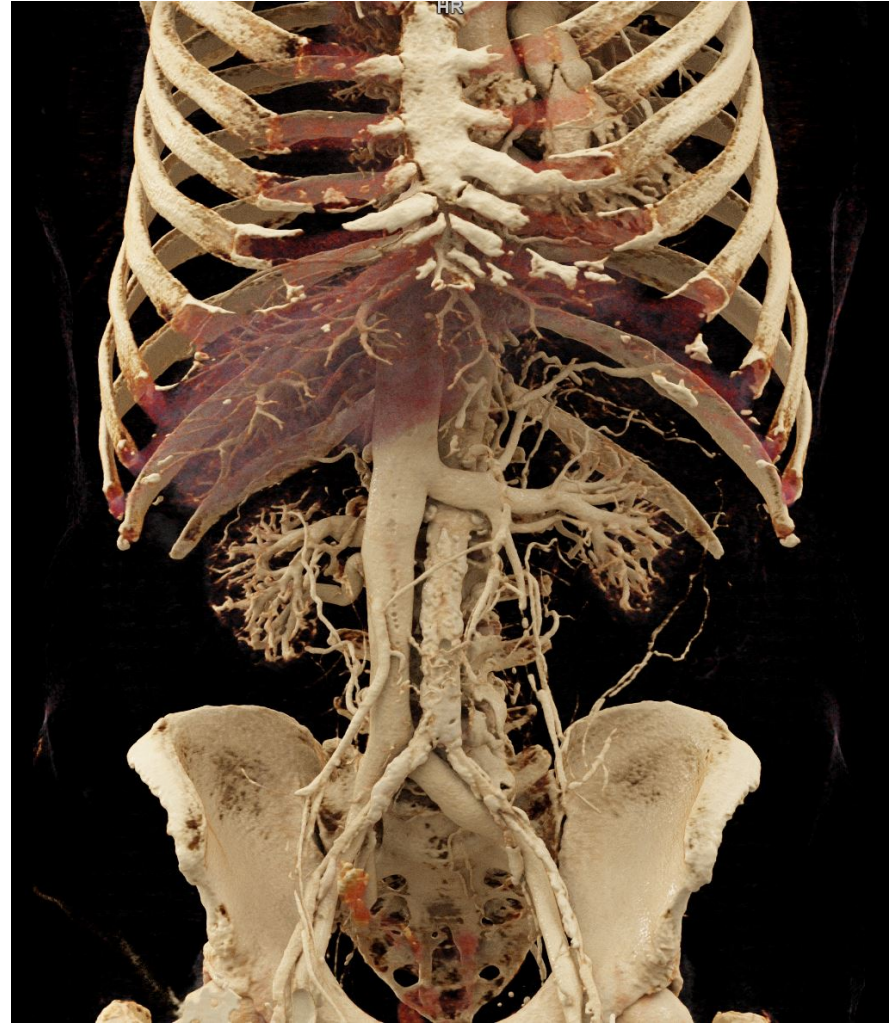
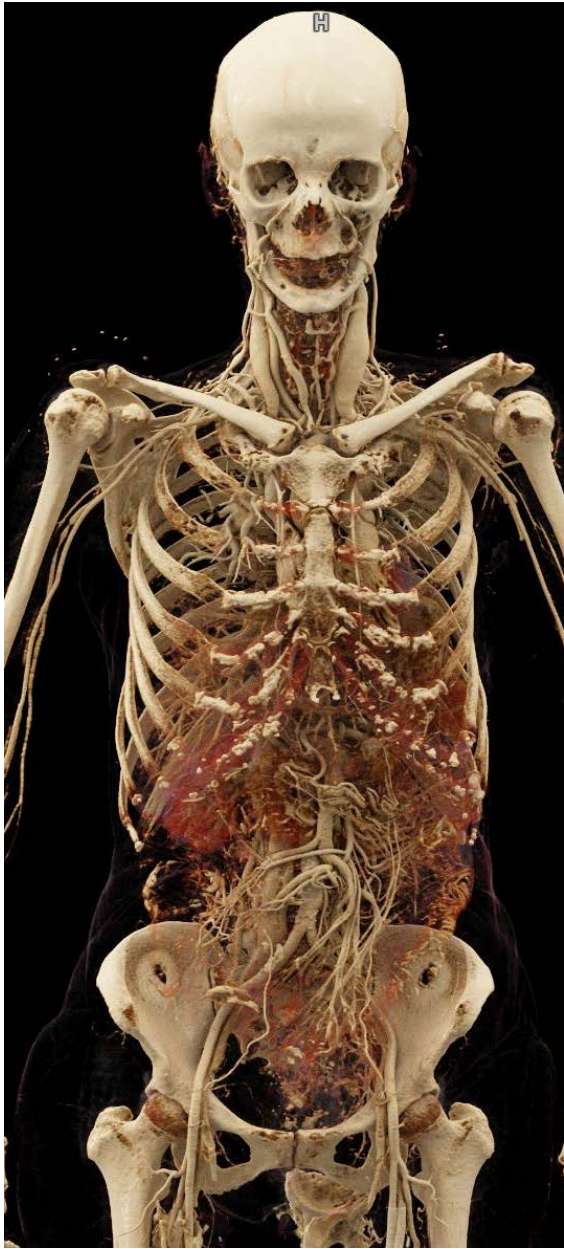
Tronc coeliaque

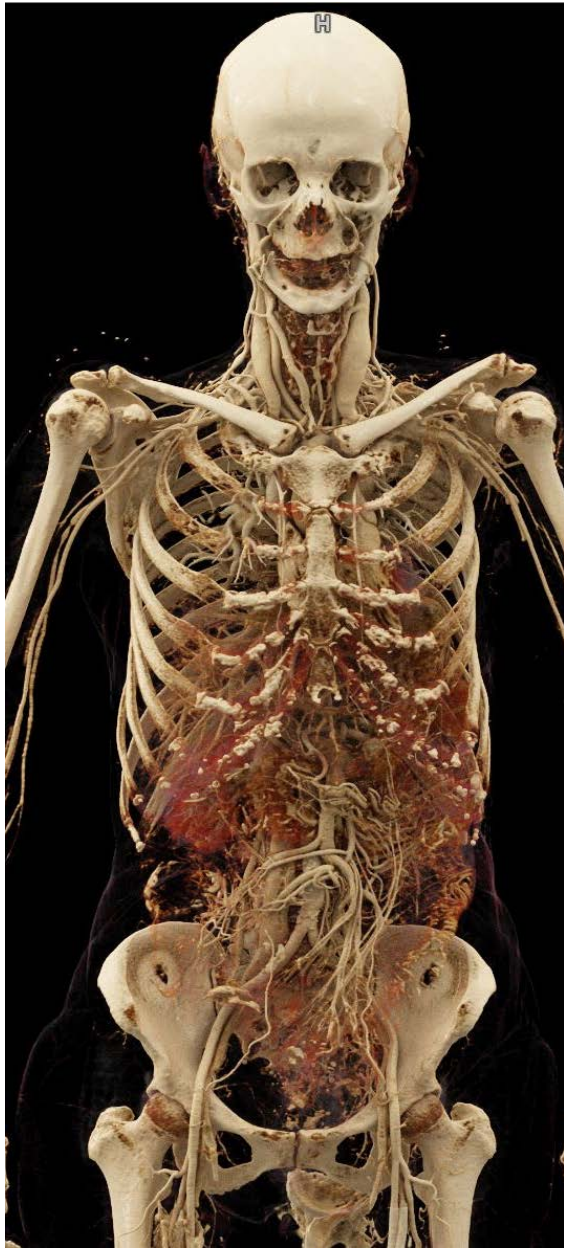
< 301 - 1 ARTERIAL >



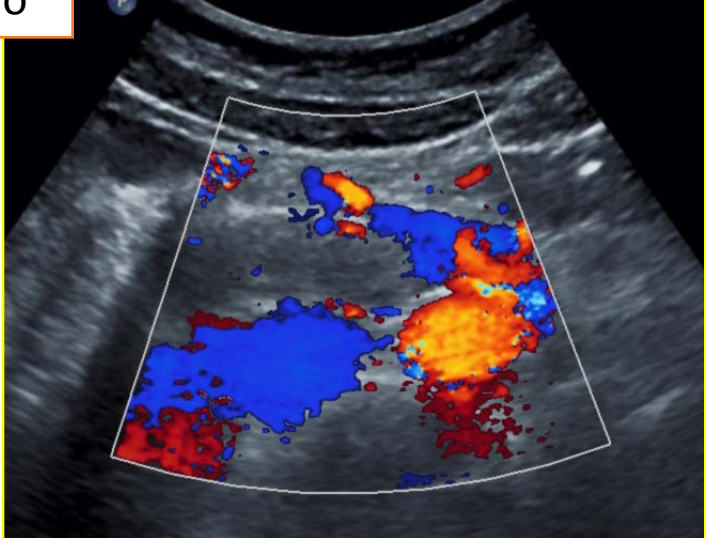
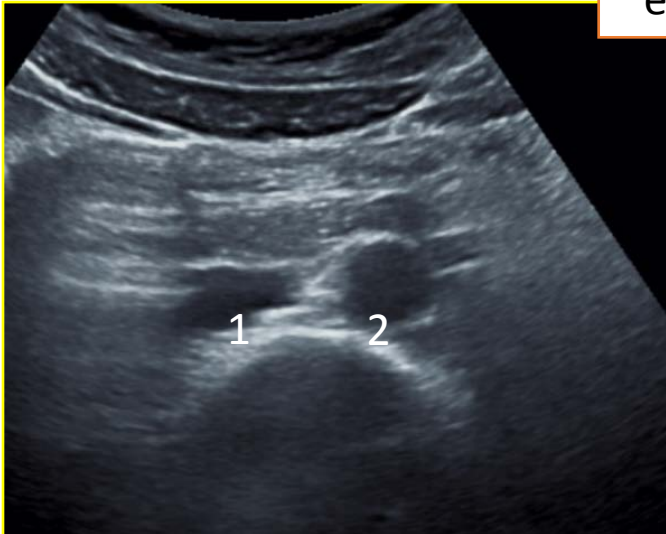
< 1101 - 1 >



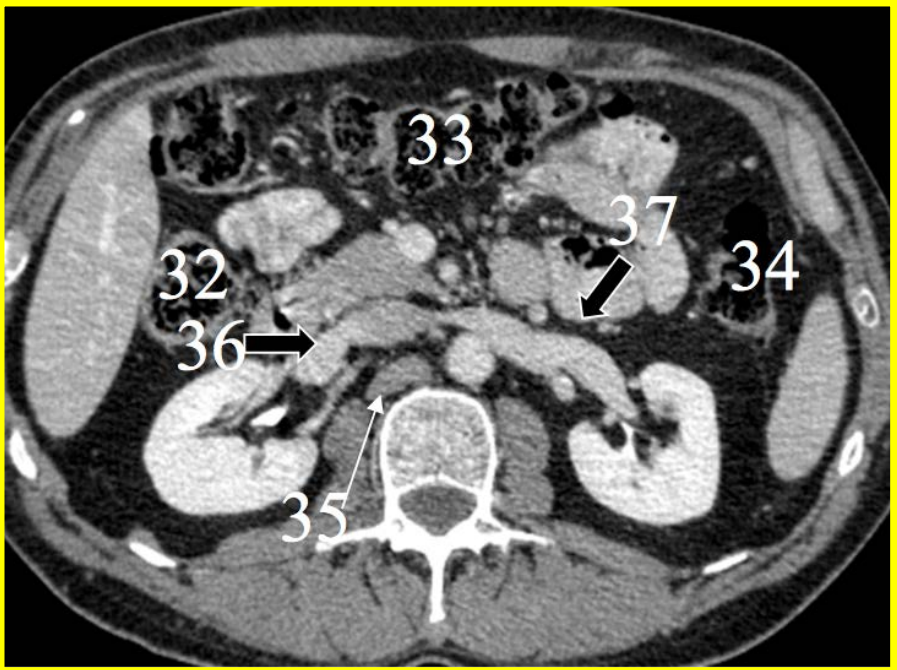




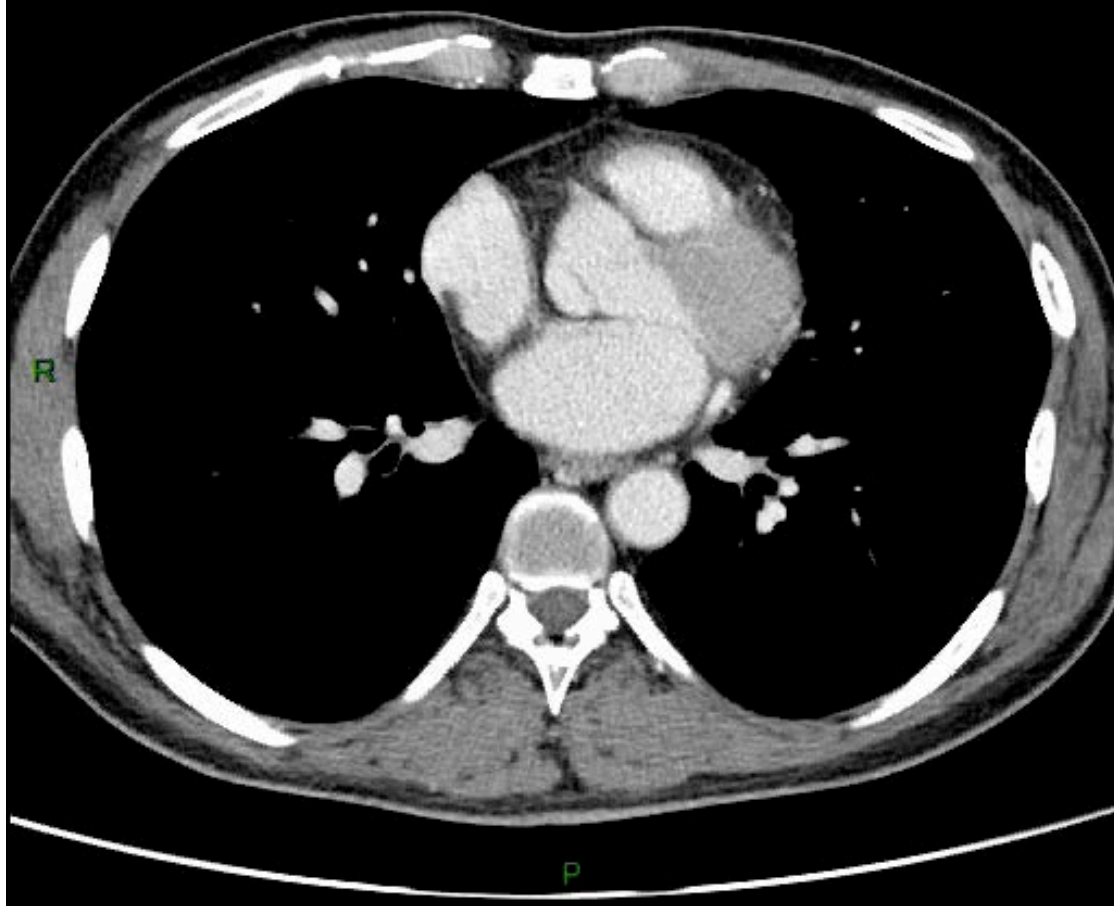
écho



1-Veine cave
2- Aorte

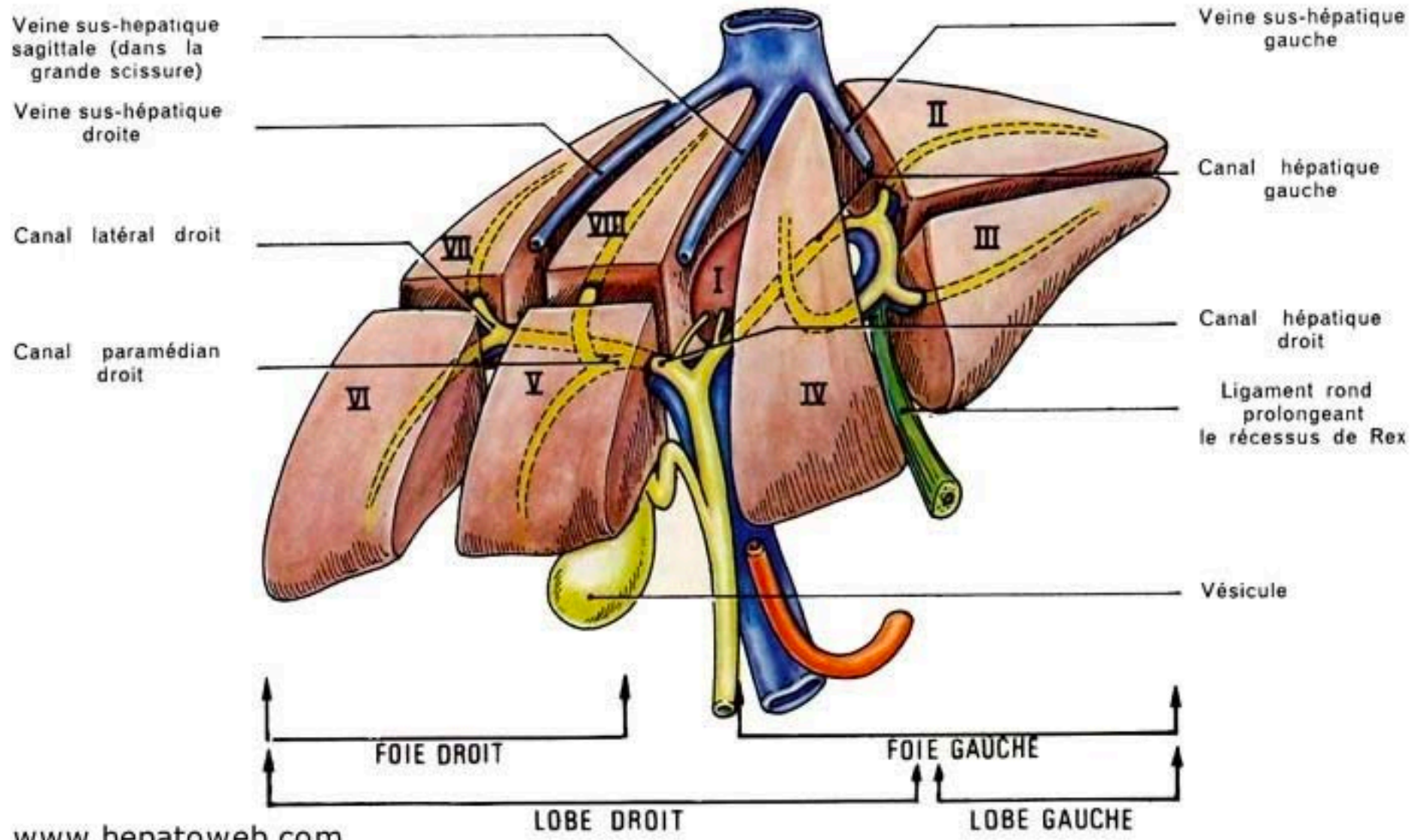


< 401 - 1 PORTAL >



< 1301 - 1 >





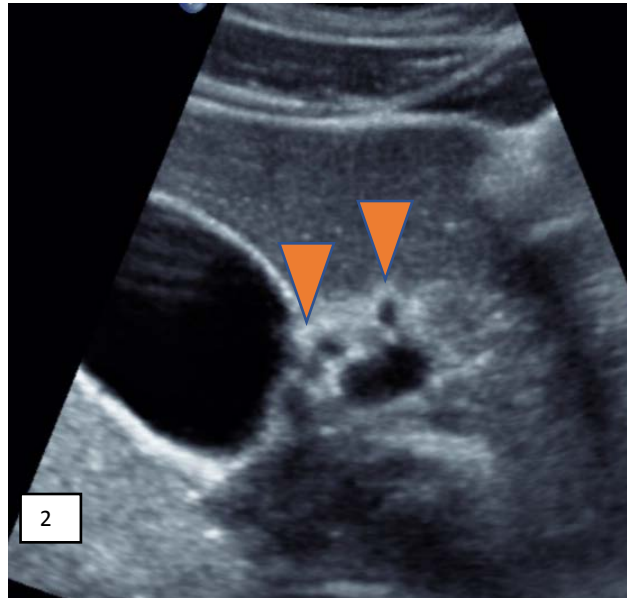
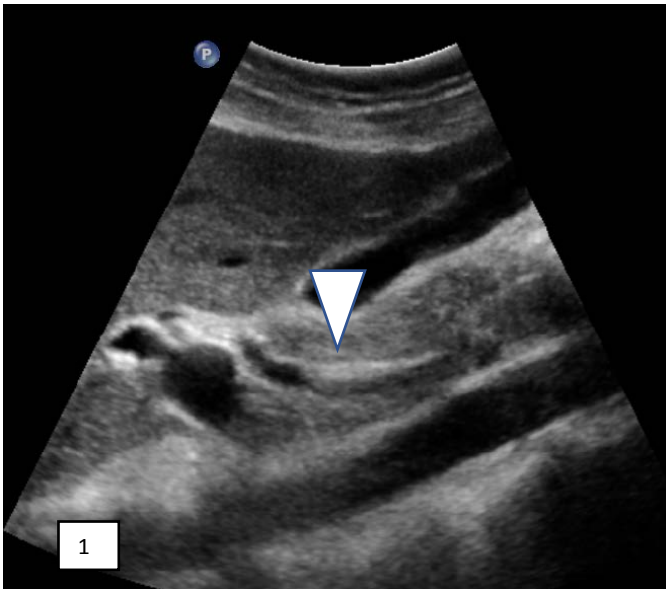
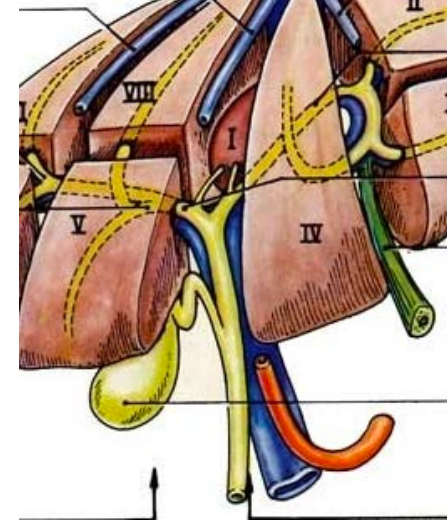
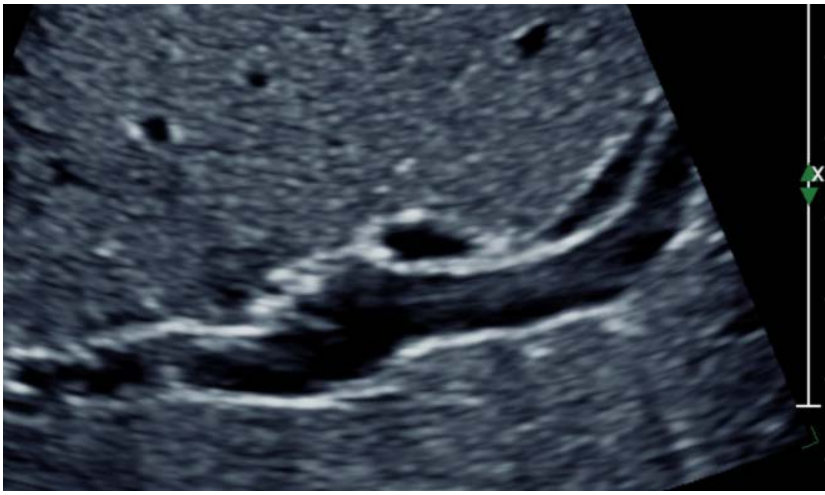
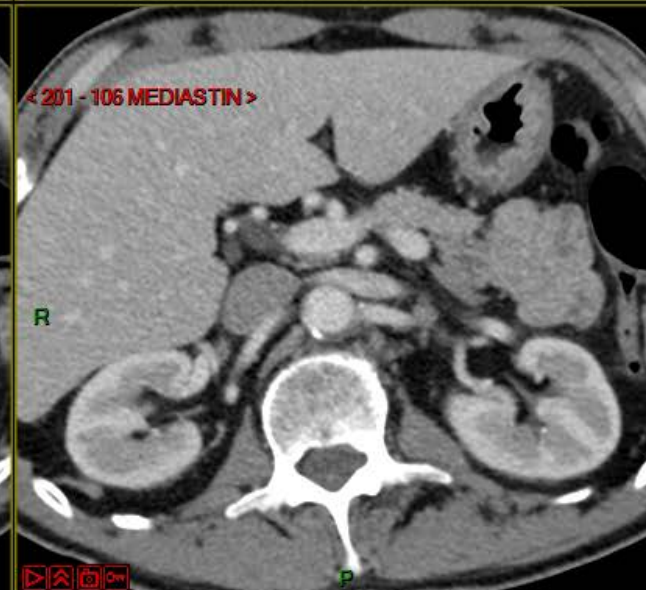
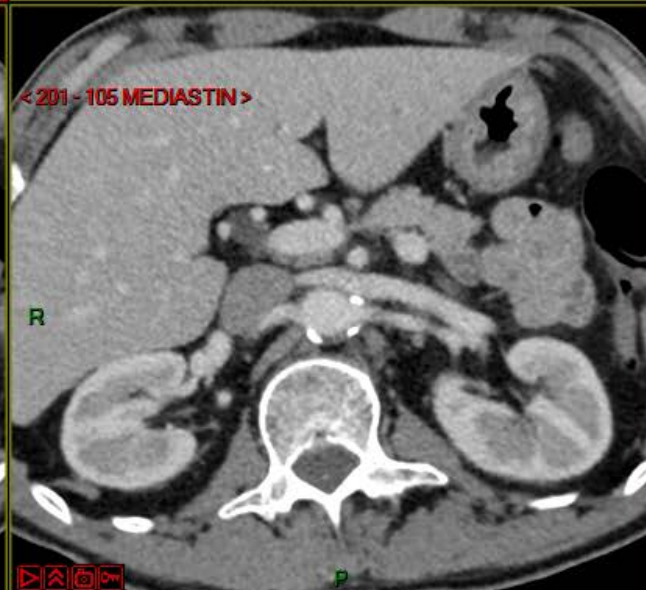
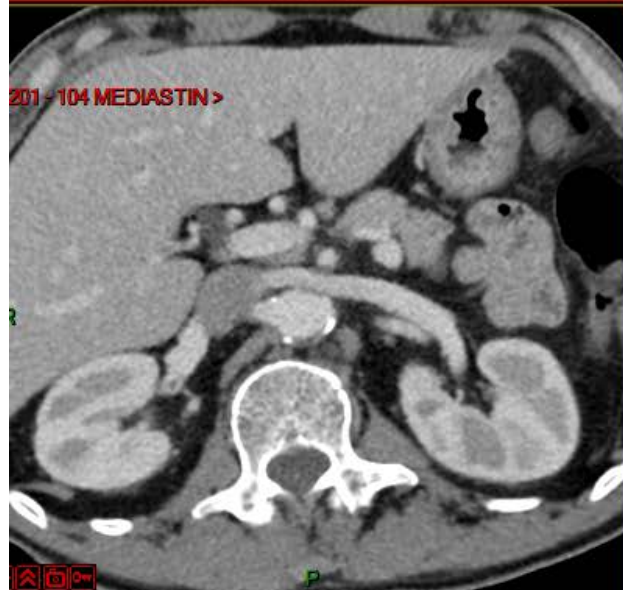
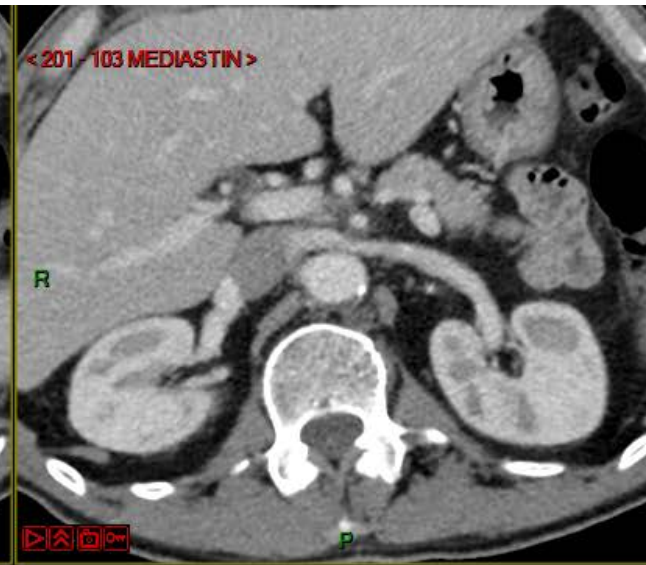
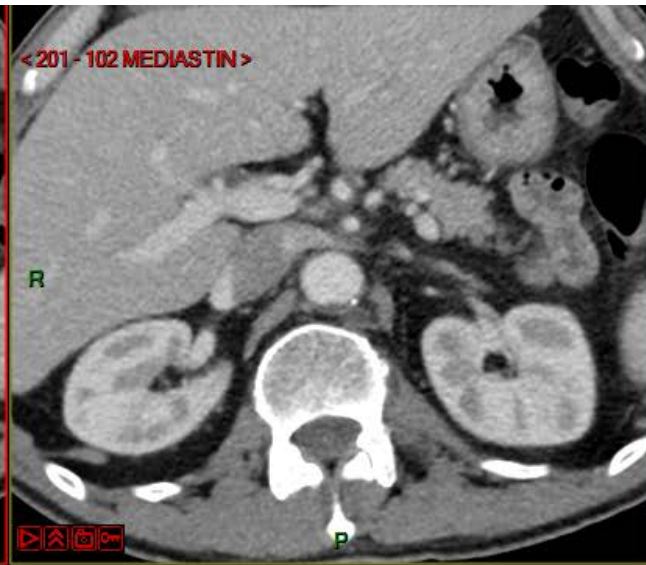
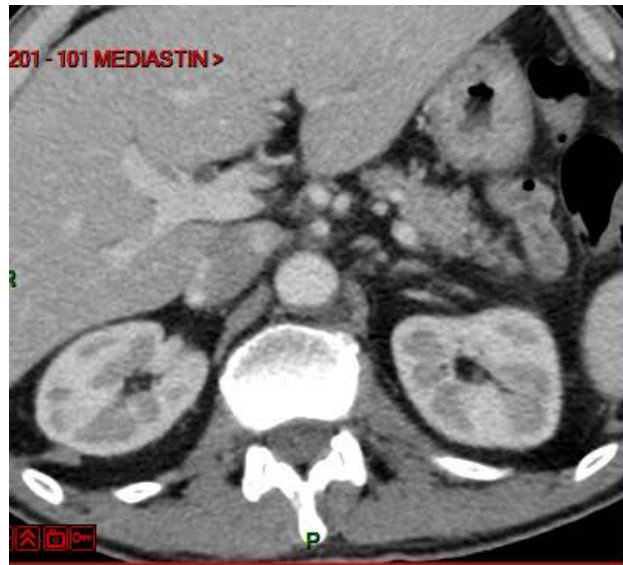
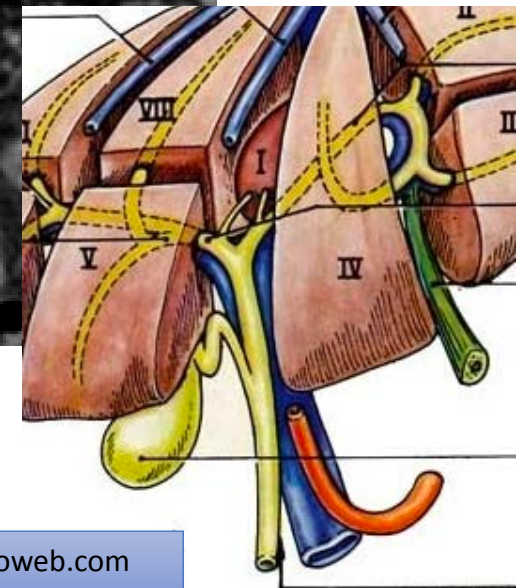
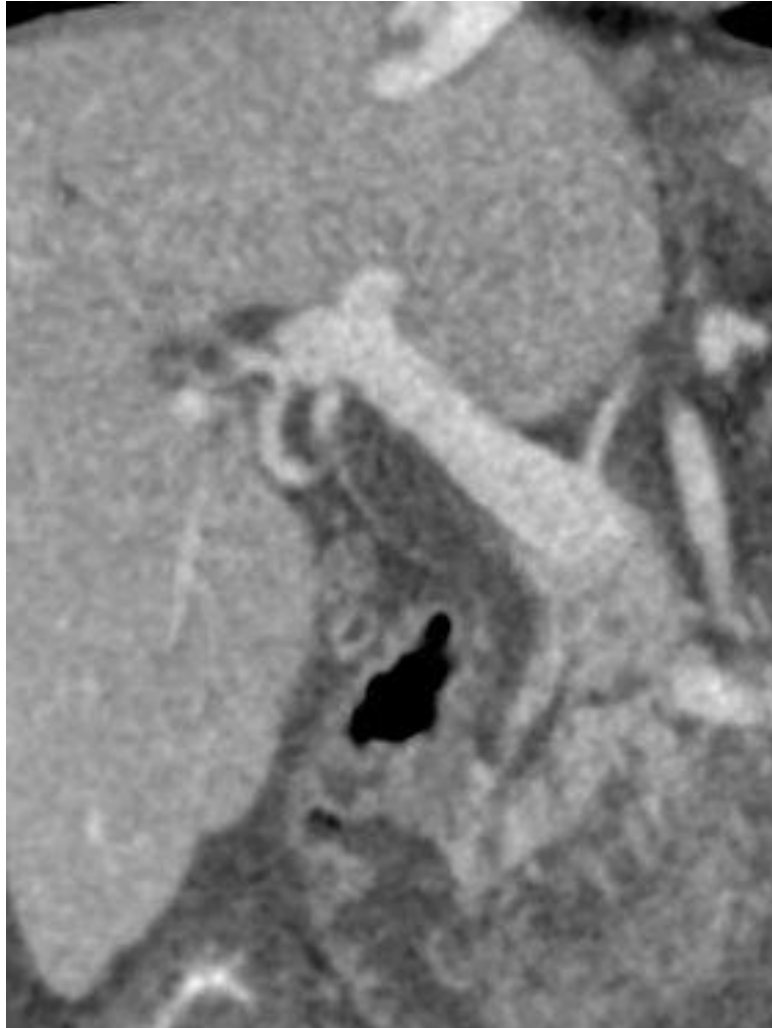
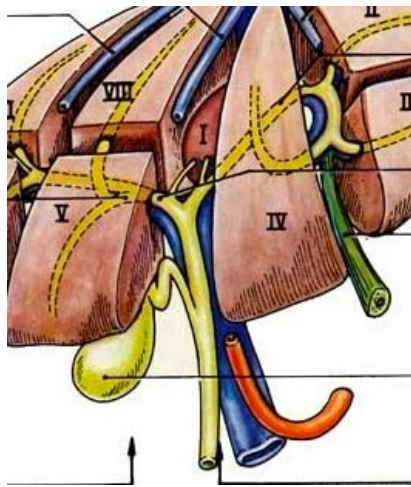
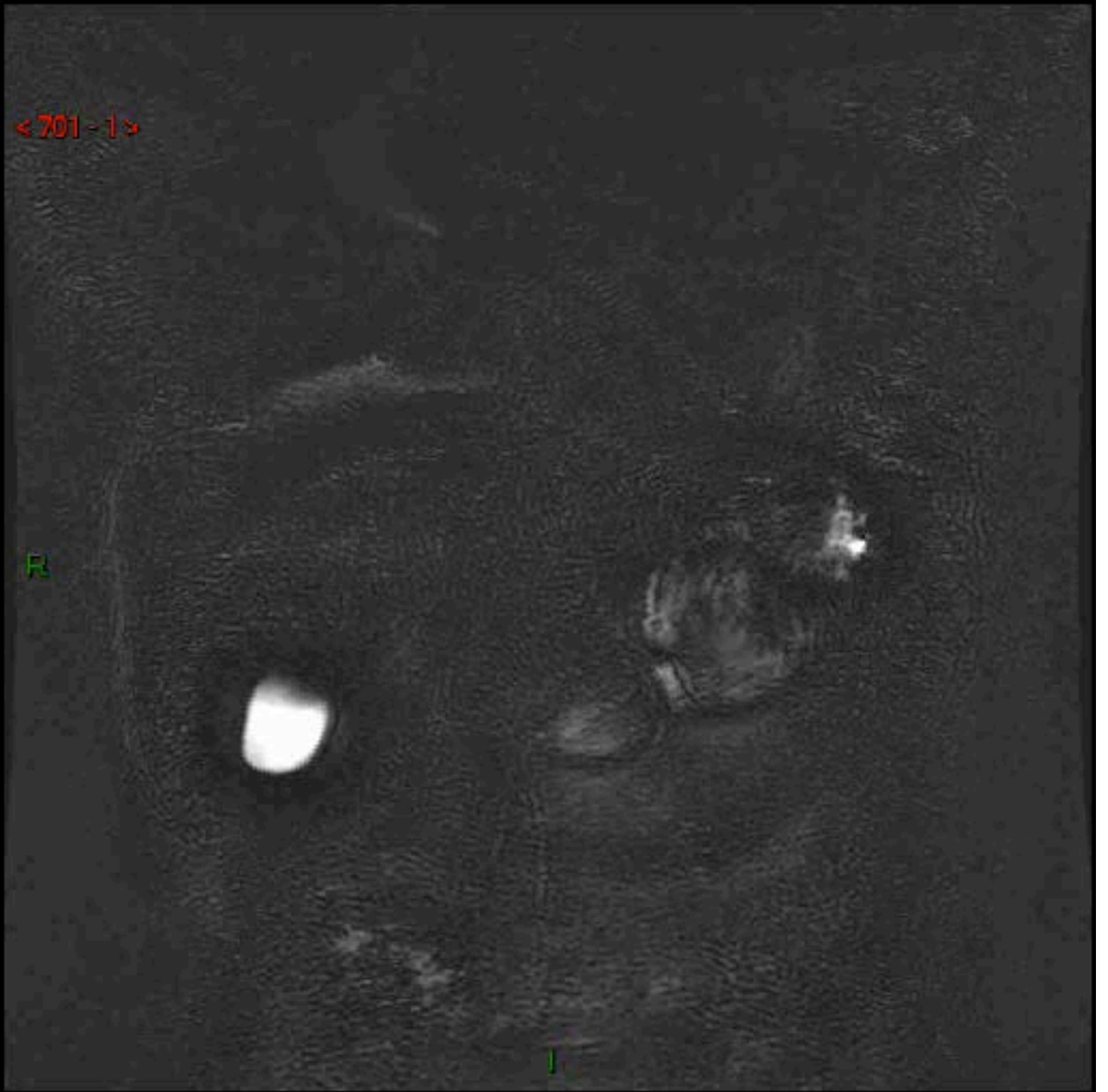
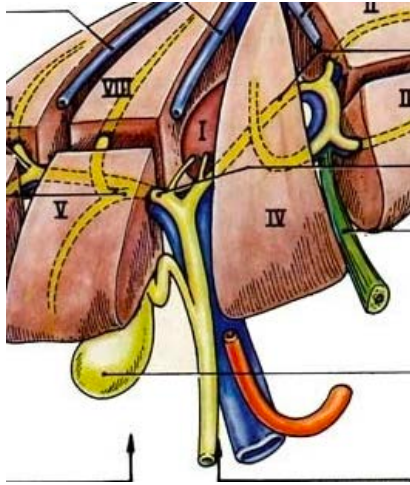


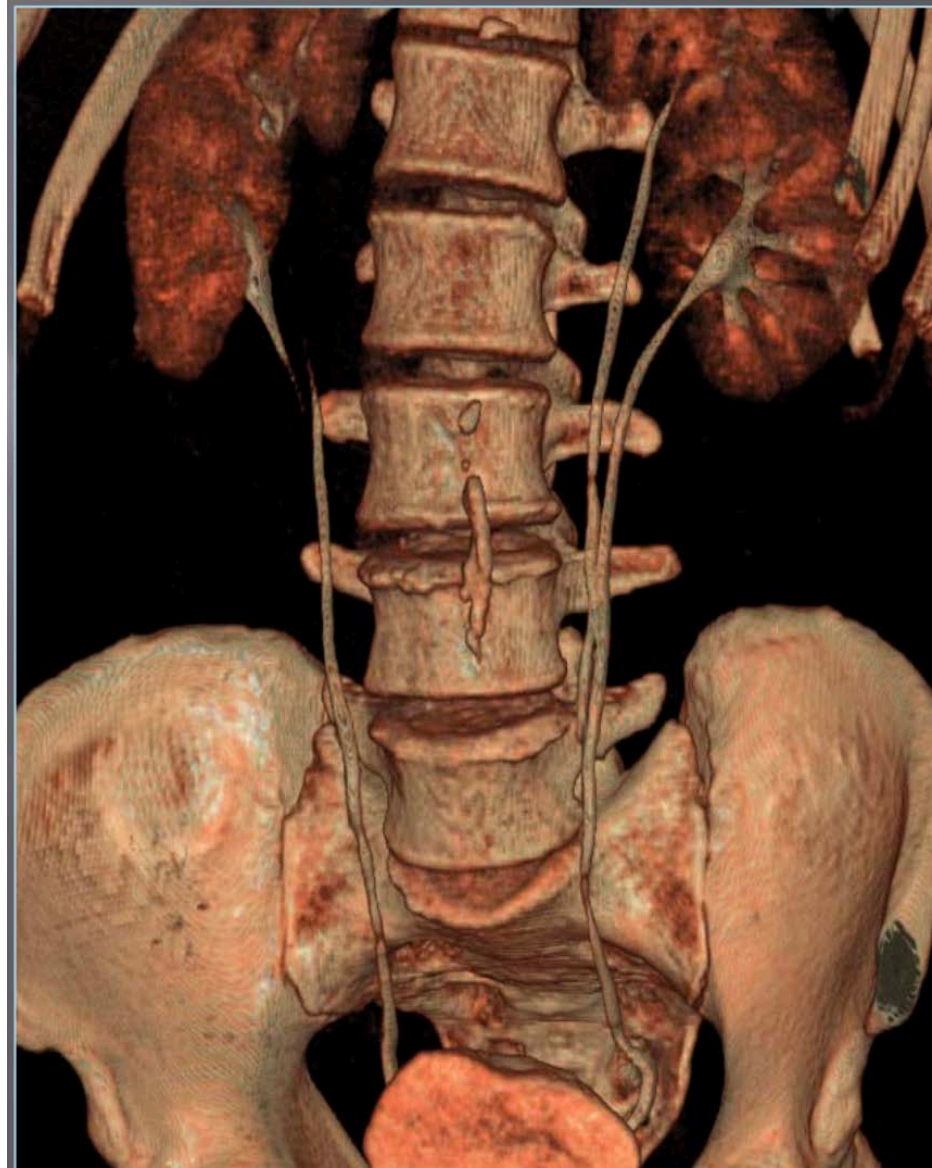
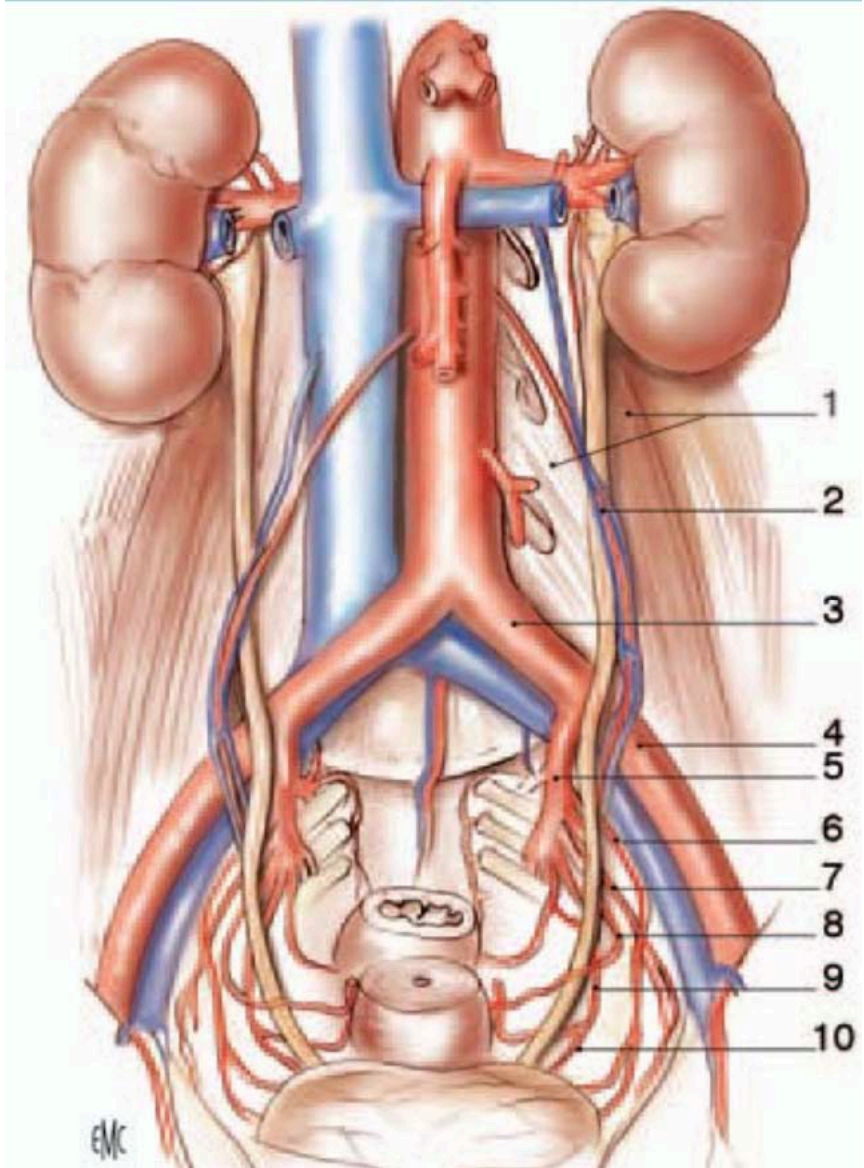
Figure 1 : voie biliaire principale dans son grand axe (tête de flèche), traversant le pancréas.
 Figure 2 : Section transverse dans le pédicule porte « tête de Mickey”, avec l’oreille droite étant le cholédoque, la gauche l’artère hépatique et la face, le tronc porte
 Figure 3 : bas cholédoque dans le versant le plus externe de la tête du pancréas





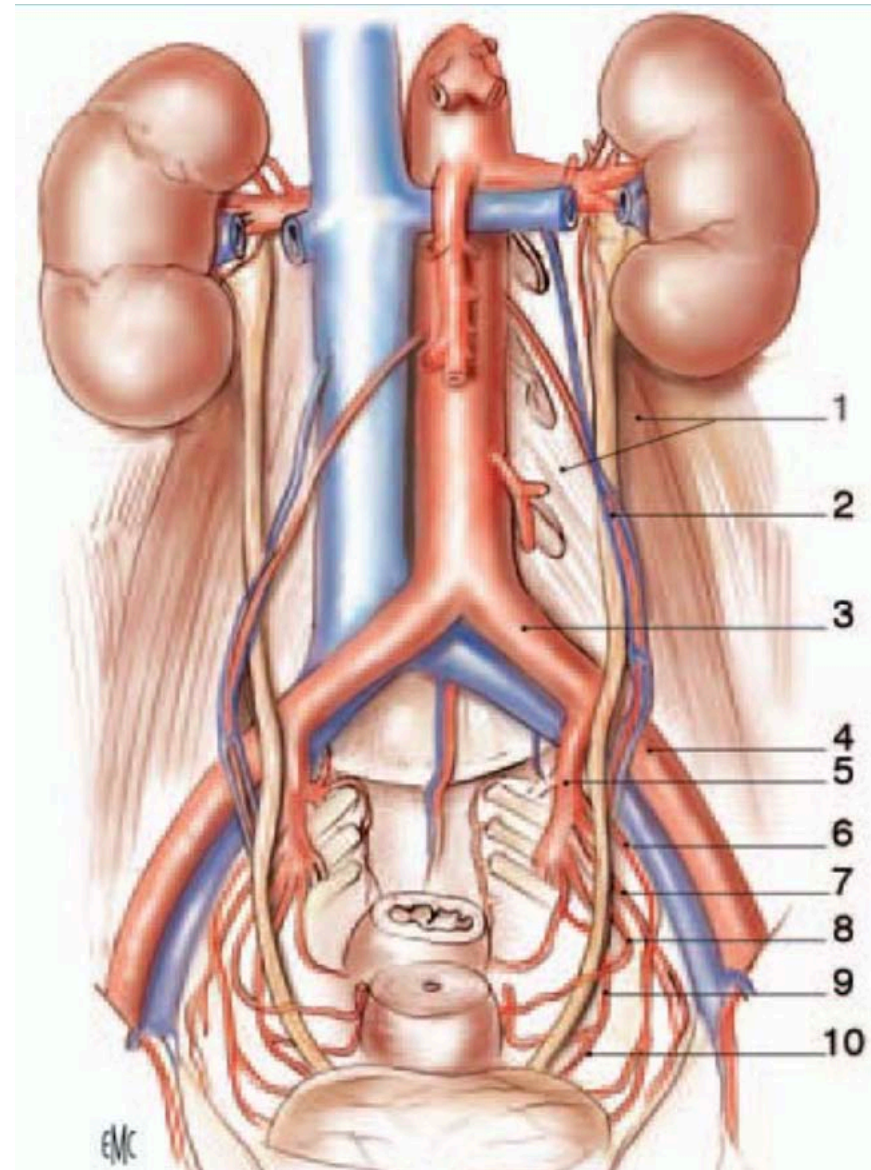






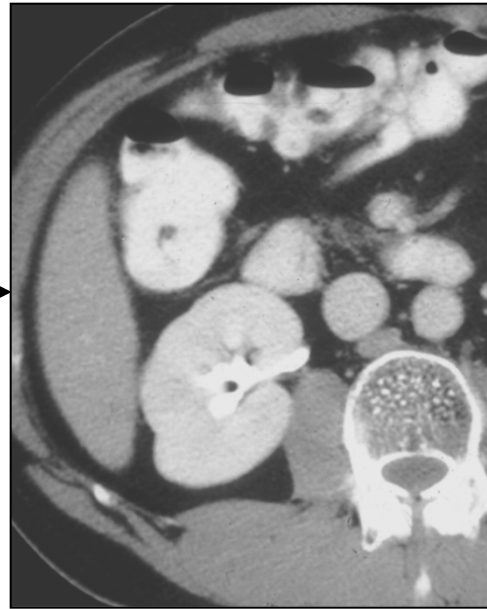
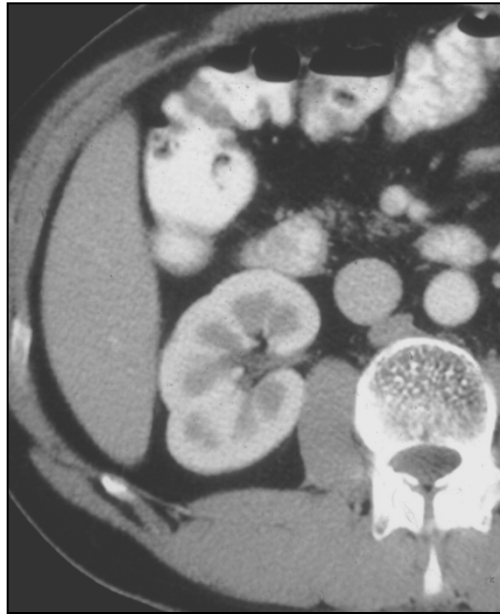
Poster JFR 2010 =>

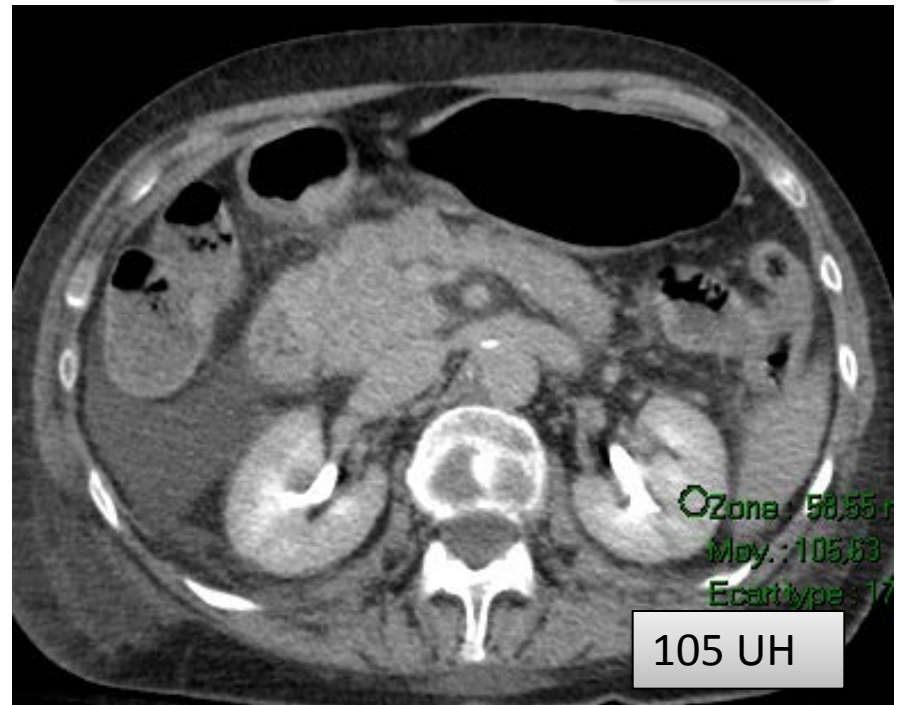
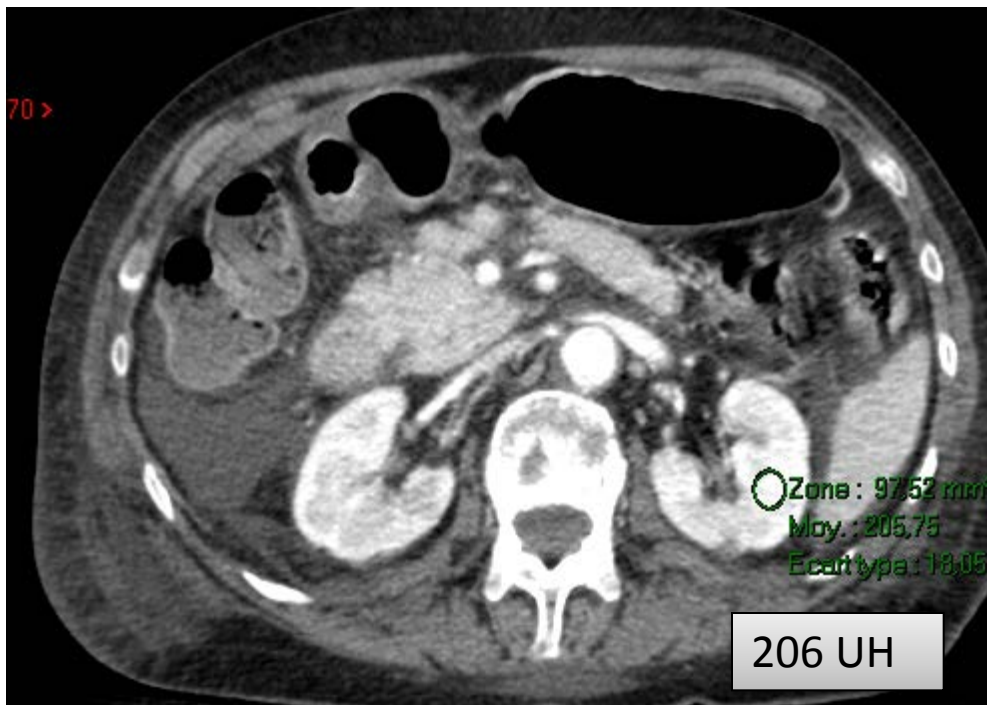
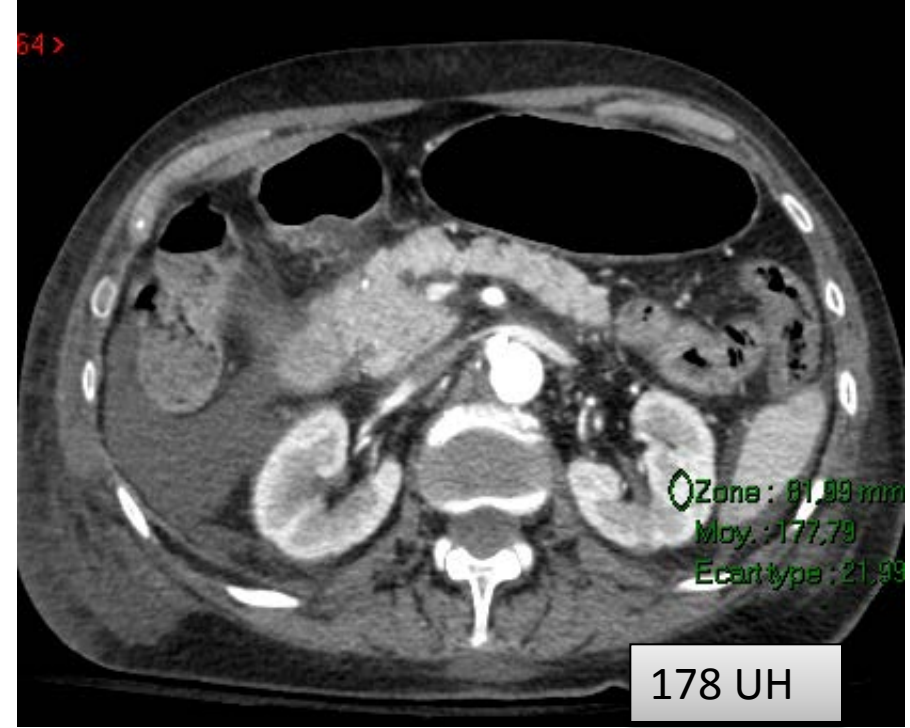
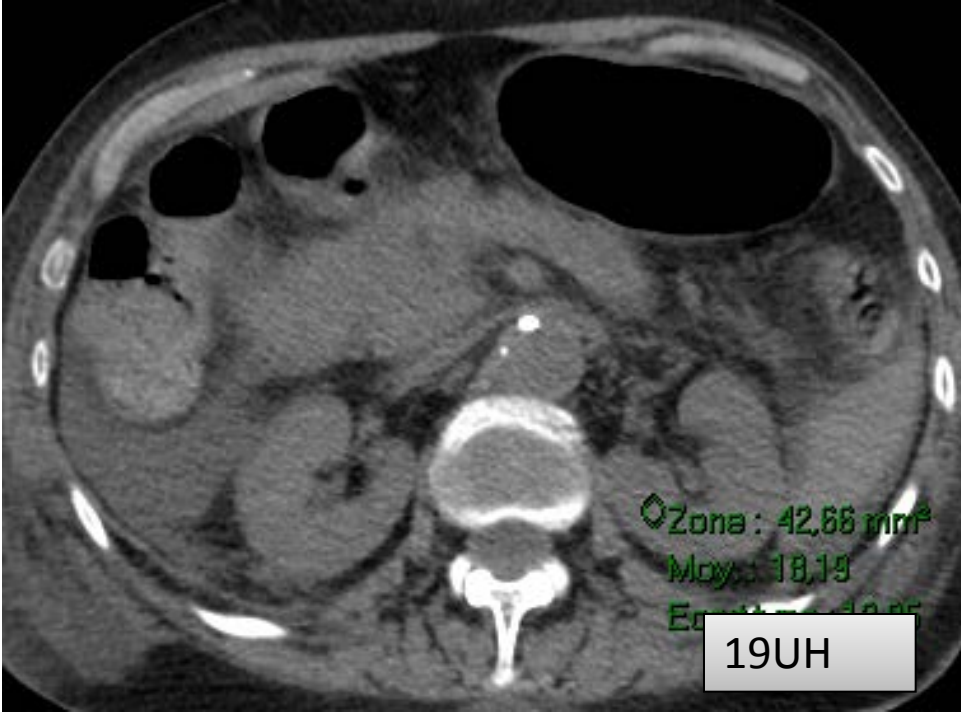
<http://pe.sfrnet.org/Data/ModuleConsultationPoster/pdf/2010/1/99a9c4b7-2071-41e7-96ad-052eee2fe181.pdf>



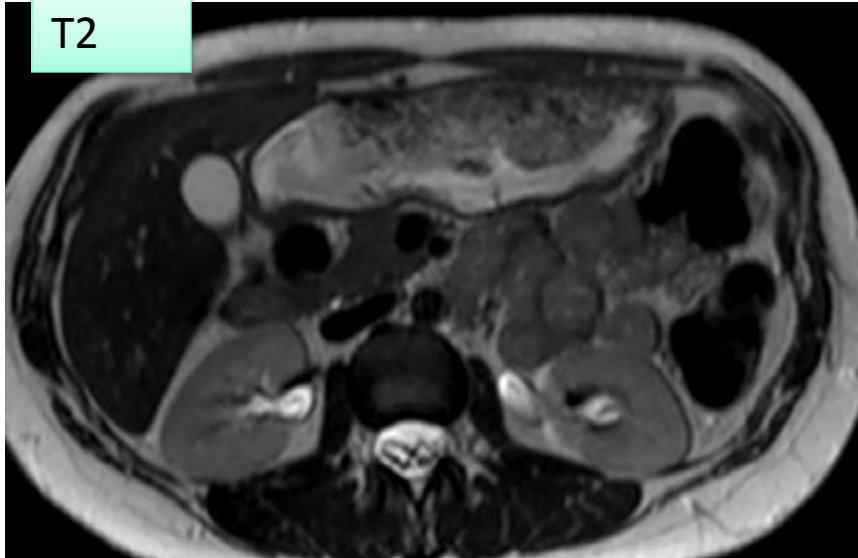
Poster JFR 2010 =>
<http://pe.sfrnet.org/Data/ModuleConsultationPoster/pdf/2010/1/99a9c4b7-2071-41e7-96ad-052eee2fe181.pdf>

Néphrographie
corticale-vasculaire Tubulaire urinaire

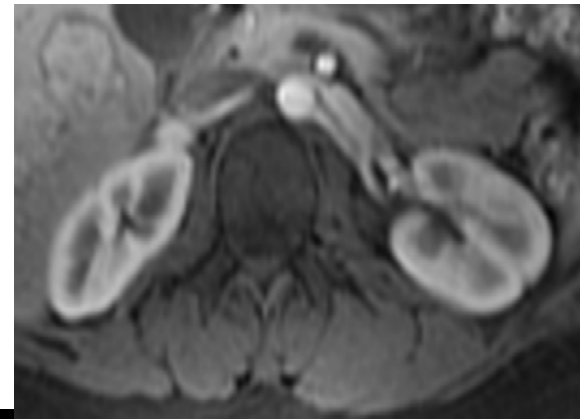




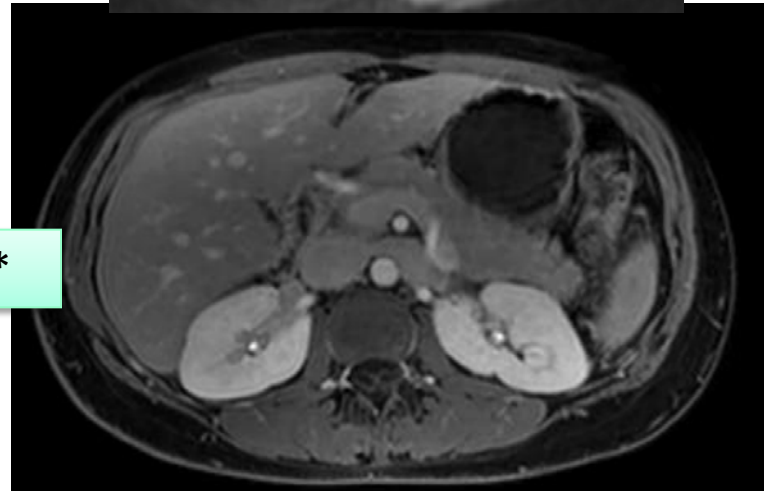
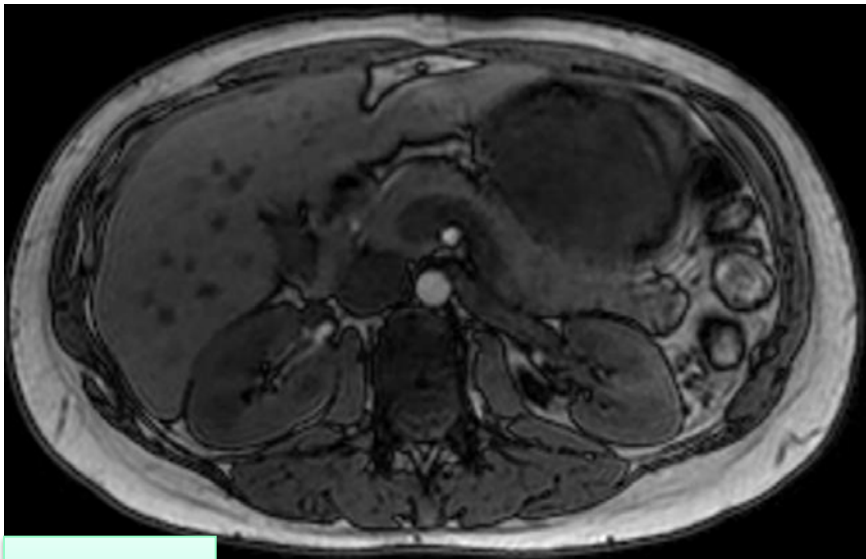
T2



T1 + C*



T1 sans
C*





1. Cœur
2. Foie
3. Œsophage
4. Veine cave inférieure
5. Aorte
6. Veine azygos
7. Veine hémiazygos
8. Estomac
9. Rate
10. Branche portale gauche
11. Diaphragme
12. Branche portale droite
13. Artère gastrique gauche
14. Artère hépatique
15. Veine porte
16. Artère splénique
17. Surrénale droite
18. Pancréas
19. Tronc coeliaque
20. Vésicule biliaire
21. Antre gastrique

22. Angle hépatique du côlon
23. Duodénum (D2)
24. Angle splénique du côlon
25. Veine splénique
26. Queue du pancréas
27. Surrénale gauche
28. Tête du pancréas
29. Jéjunum
30. Veine mésentérique supérieure
31. Artère mésentérique supérieure
32. Côlon ascendant
33. Côlon transverse
34. Côlon descendant
35. Pilier droit du diaphragme
36. Veine rénale droite
37. Veine rénale gauche
38. Artère rénale gauche
39. Bassinet droit
40. Bassinet gauche
41. Urètre droit
42. Urètre gauche

43. Rein droit
44. Rein gauche
45. Mésentère
46. Artère mésentérique inférieure
47. Jéjuno-iléon
48. Artère iliaque commune droite
49. Artère iliaque commune gauche
50. Muscle iliaque droit
51. Muscle psoas droit
52. Veine iliaque commune droite
53. Veine iliaque commune gauche
54. Artère iliaque externe droite
55. Veine iliaque externe droite
56. Vaisseaux iliaques internes
57. Côlon sigmoïde
58. Vésicules séminales
59. Vessie
60. Prostate
61. Rectum
62. Muscle élévateur de l'anus
63. Artère fémorale commune droite
64. Veine fémorale commune droite