



Secteur des Sciences de la santé

Faculté de Médecine

Cours WMDS1311

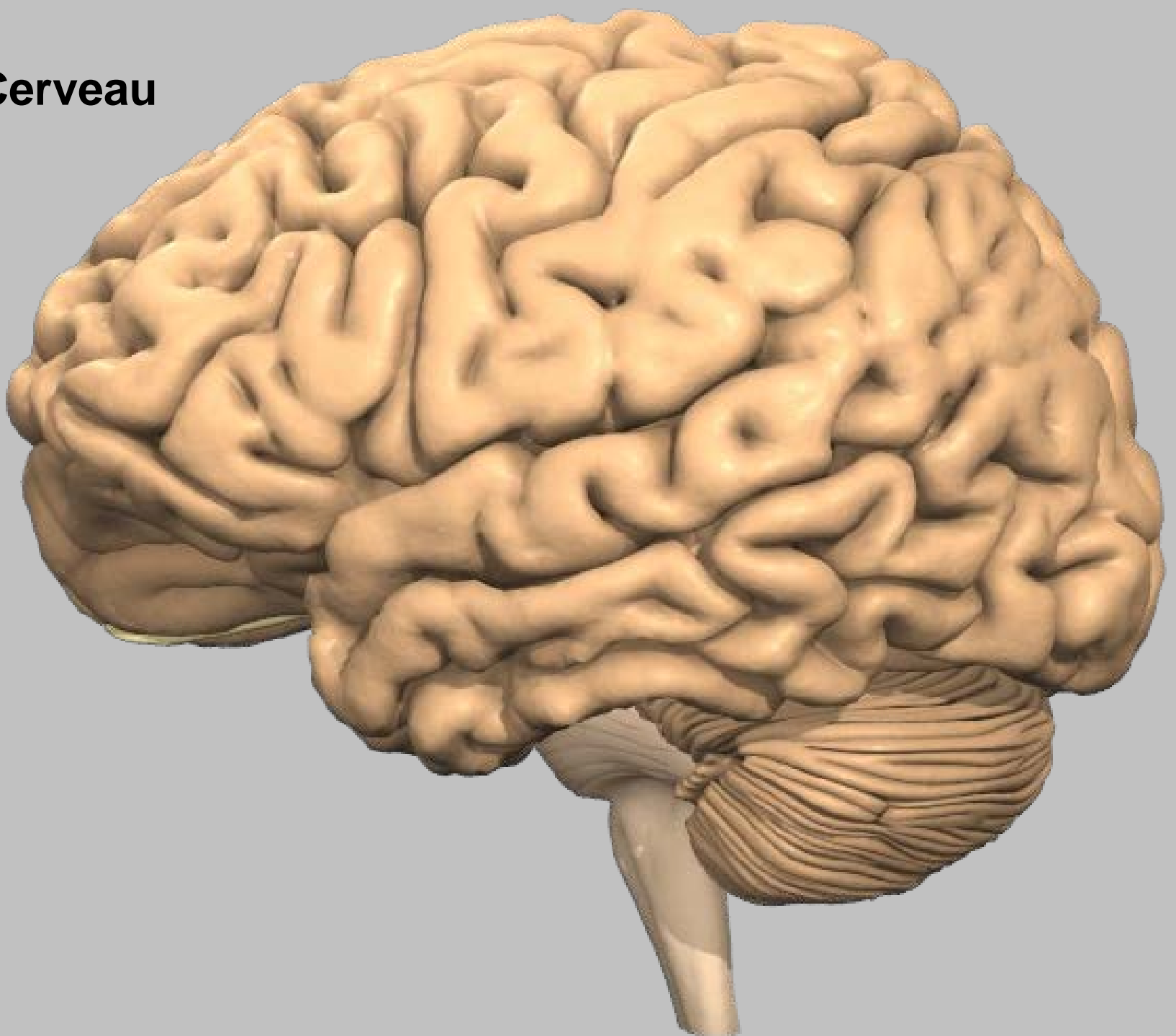
Année académique 2017-2018

Neuroanatomie radiologique

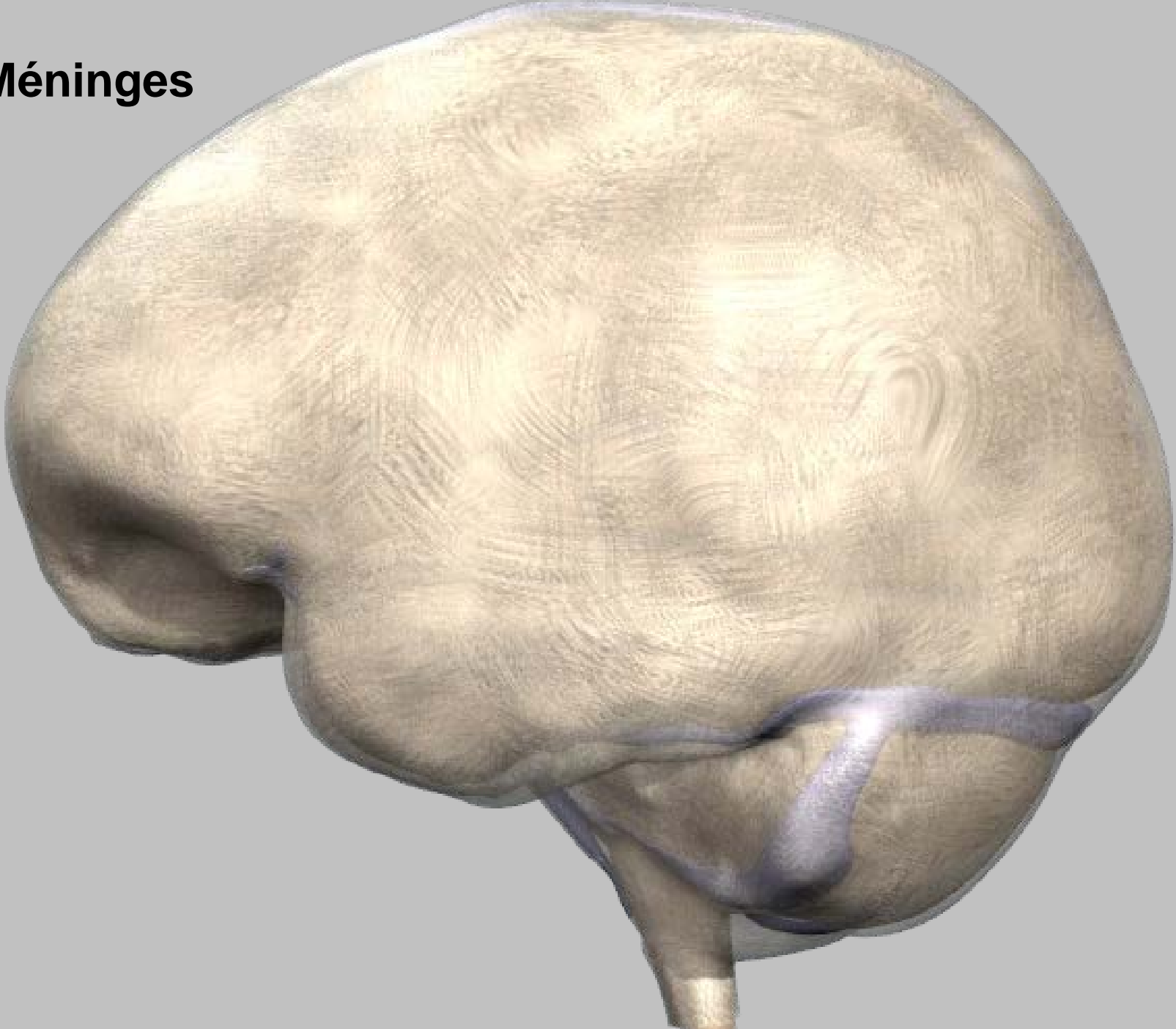
Pr. Thierry DUPREZ

Module 2: méninges – replis durs

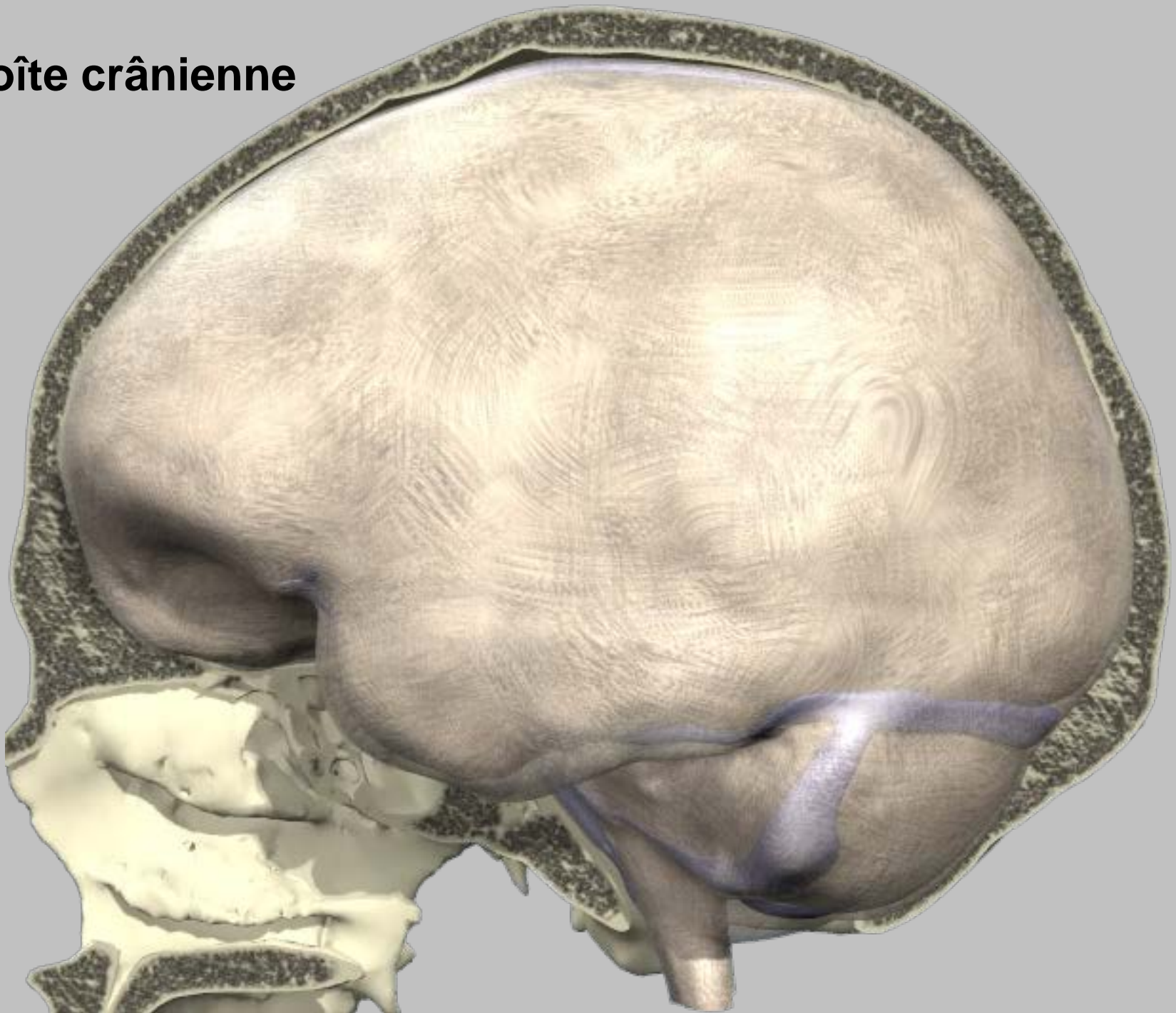
Cerveau



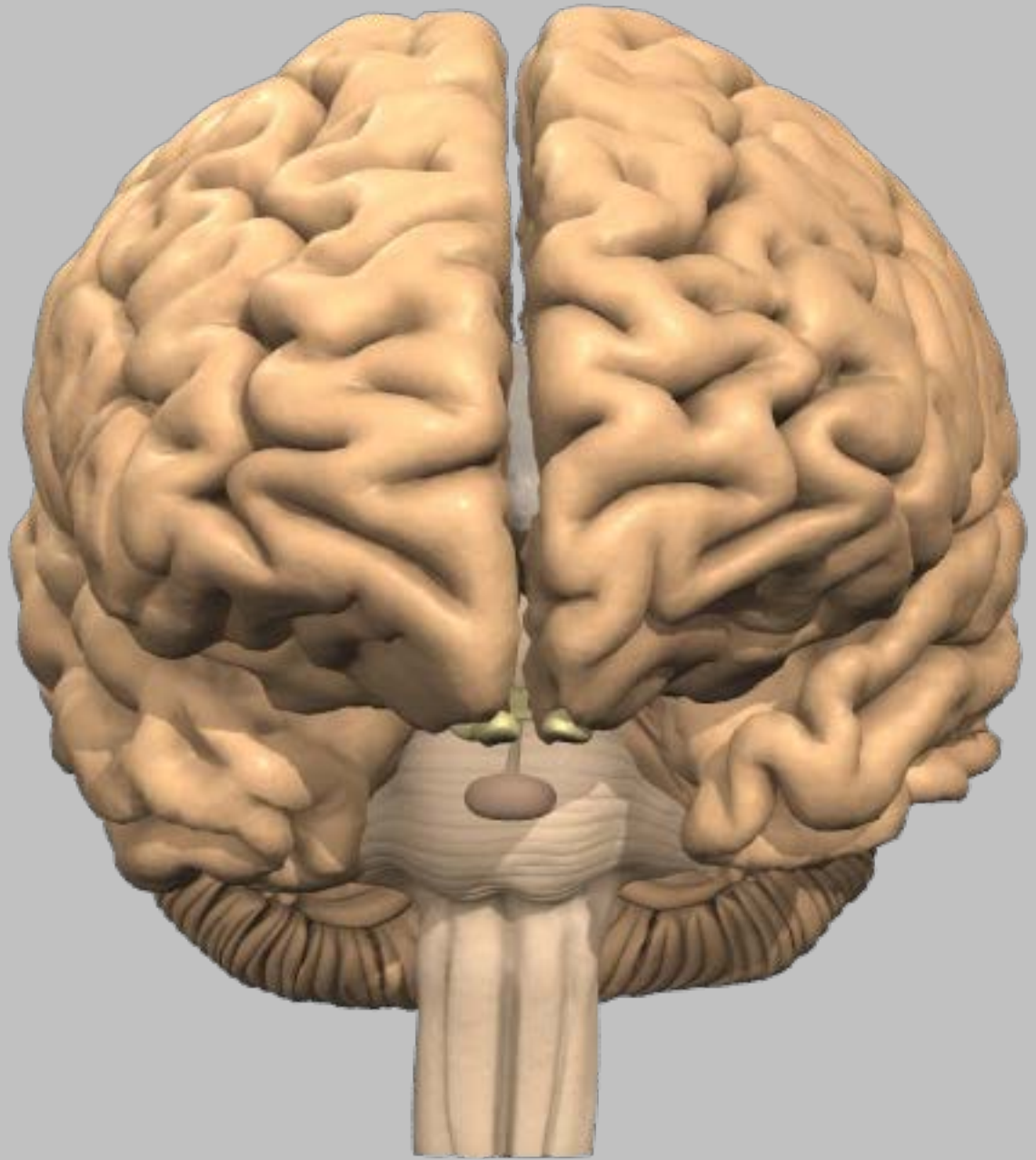
Méninges



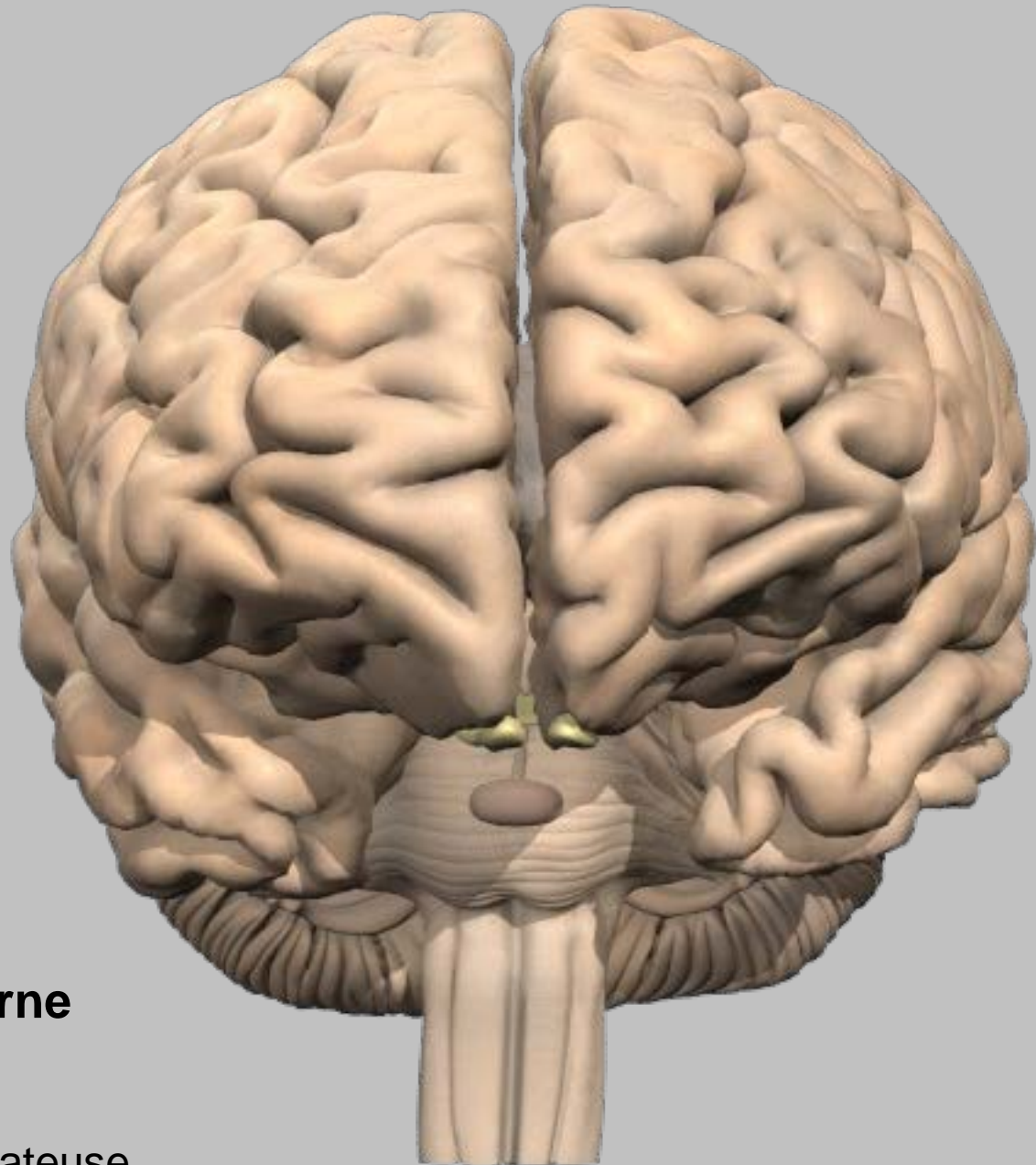
Boîte crânienne



**parenchyme
cérébral**



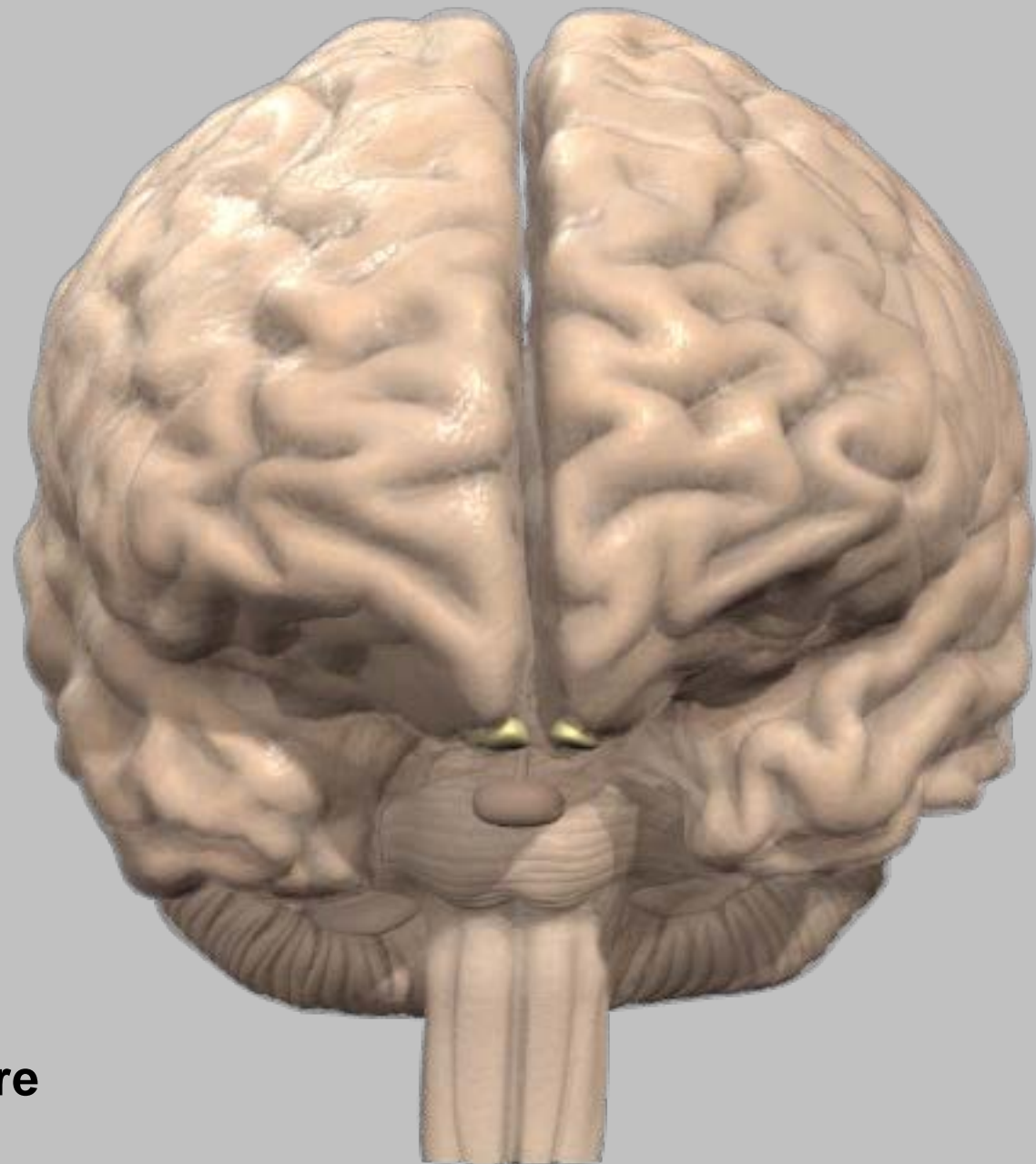
pie-mère



Feuillet méningé le plus interne

- très mince
- diaphane
- adhérent à la surface parenchymateuse
- limite en profondeur les espaces sous-arachnoïdien (ESAs) où circule le LCR

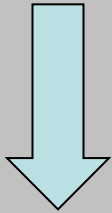
arachnoïde



Feuillet méningé intermédiaire

- mince
- accolé à la face profonde de la dure-mère **sans y adhérer (espace virtuel SD)**
- limite en dehors les ESAs (LCR)

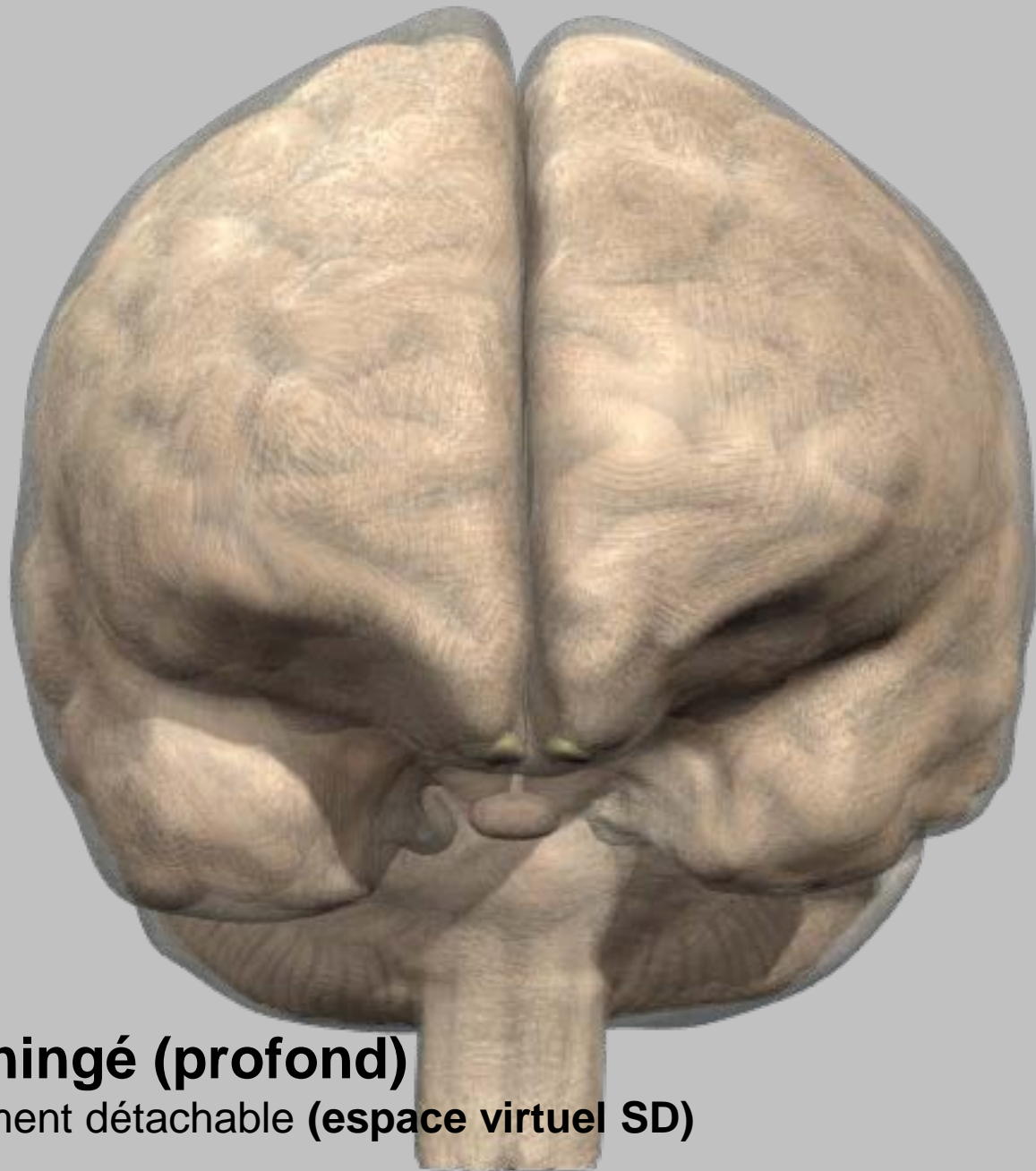
dure-mère



feuillet **périosté** en **dehors**
feuillet **méningé** en **dedans**

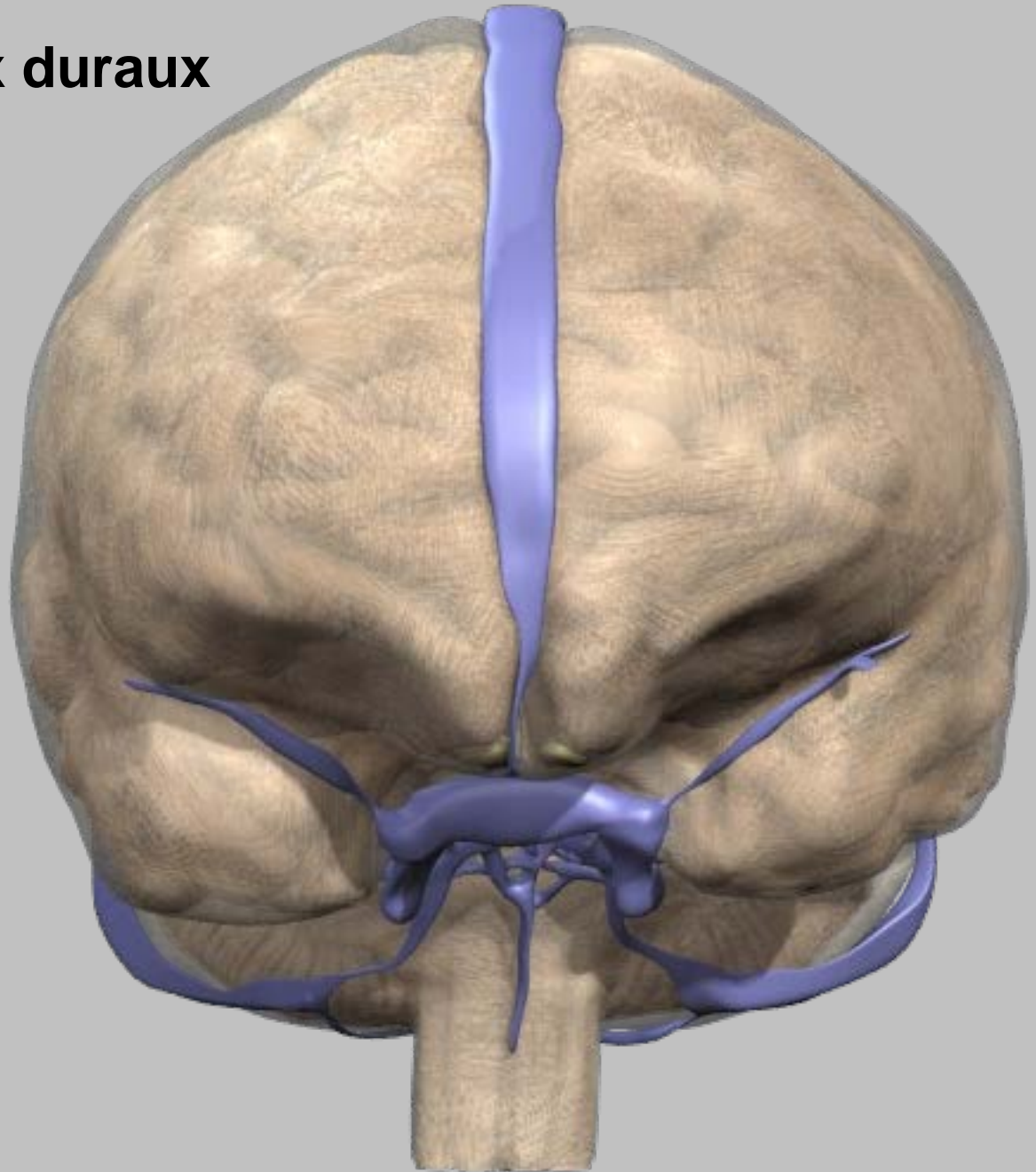
feuillet dure-mérien méningé (profond)

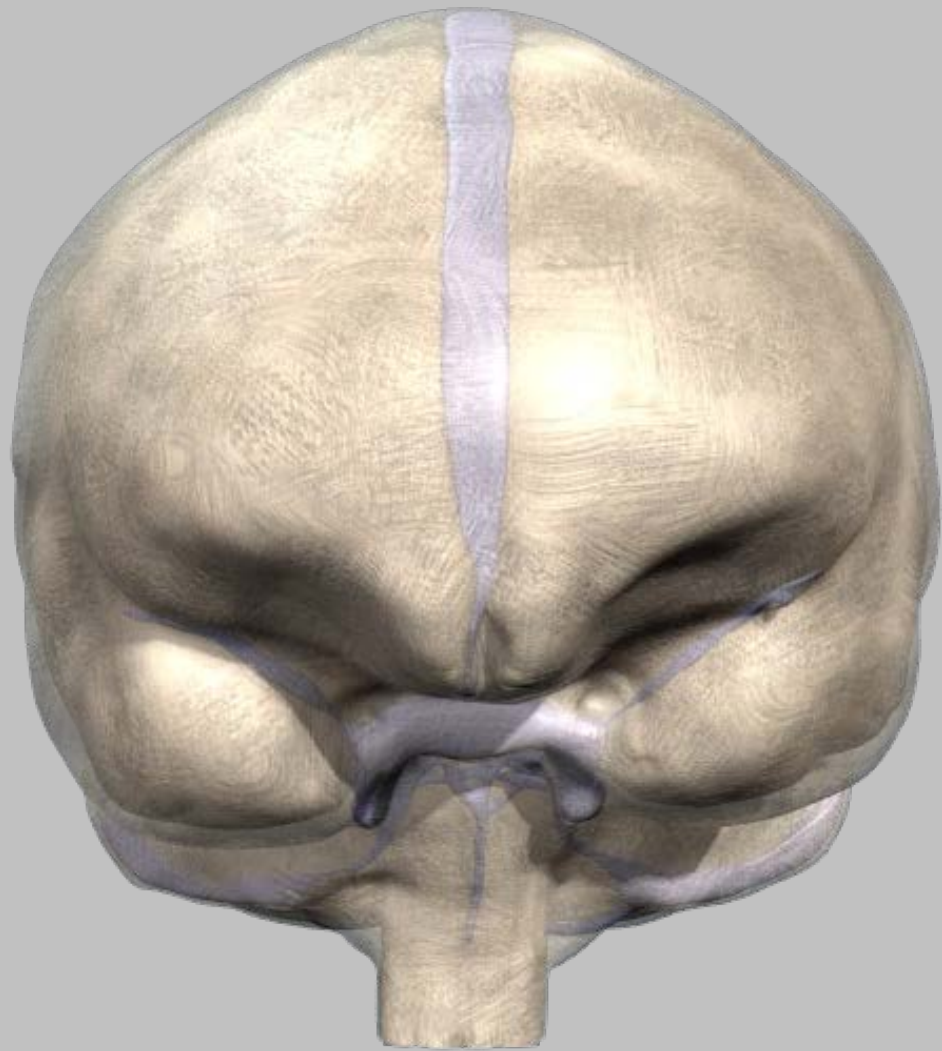
- adhère à l'arachnoïde mais aisément détachable (**espace virtuel SD**)
- donne **4 replis durs**
- tapisse en dedans les sinus veineux



grands sinus veineux durs

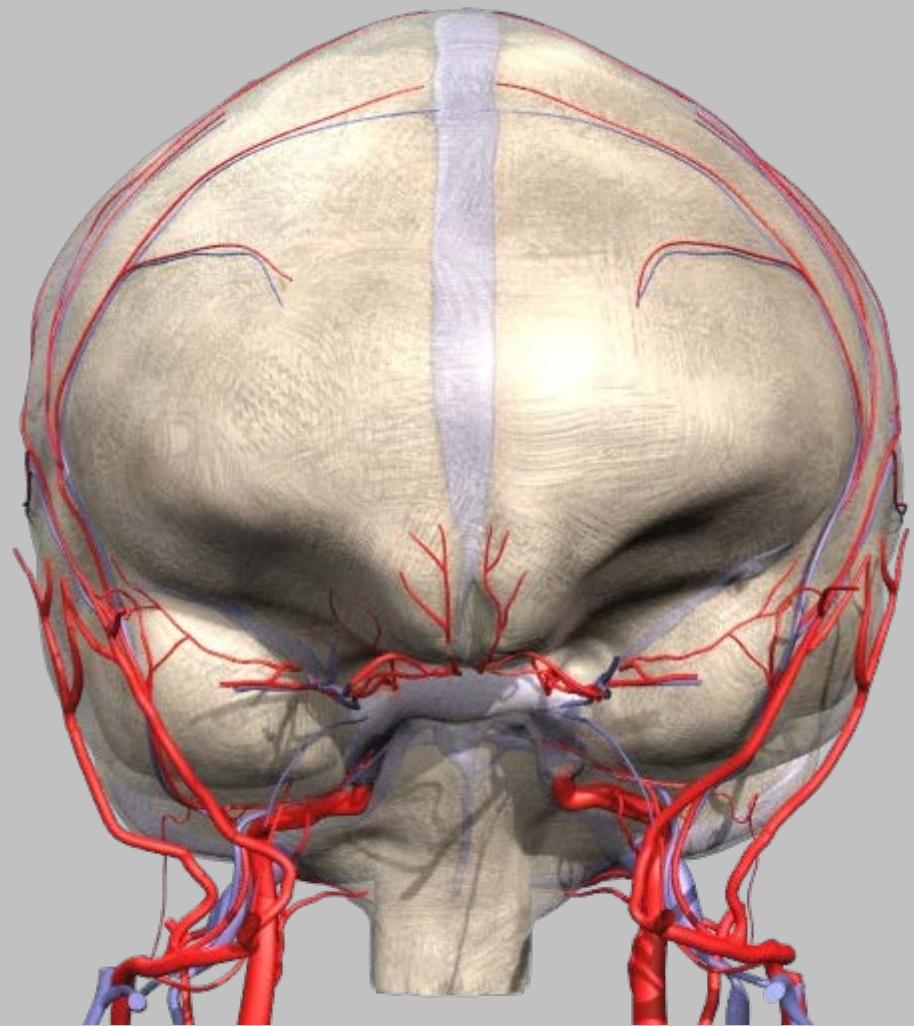
sertis
entre
feuillet méningé
et
feuillet périosté
de la **dure-mère**





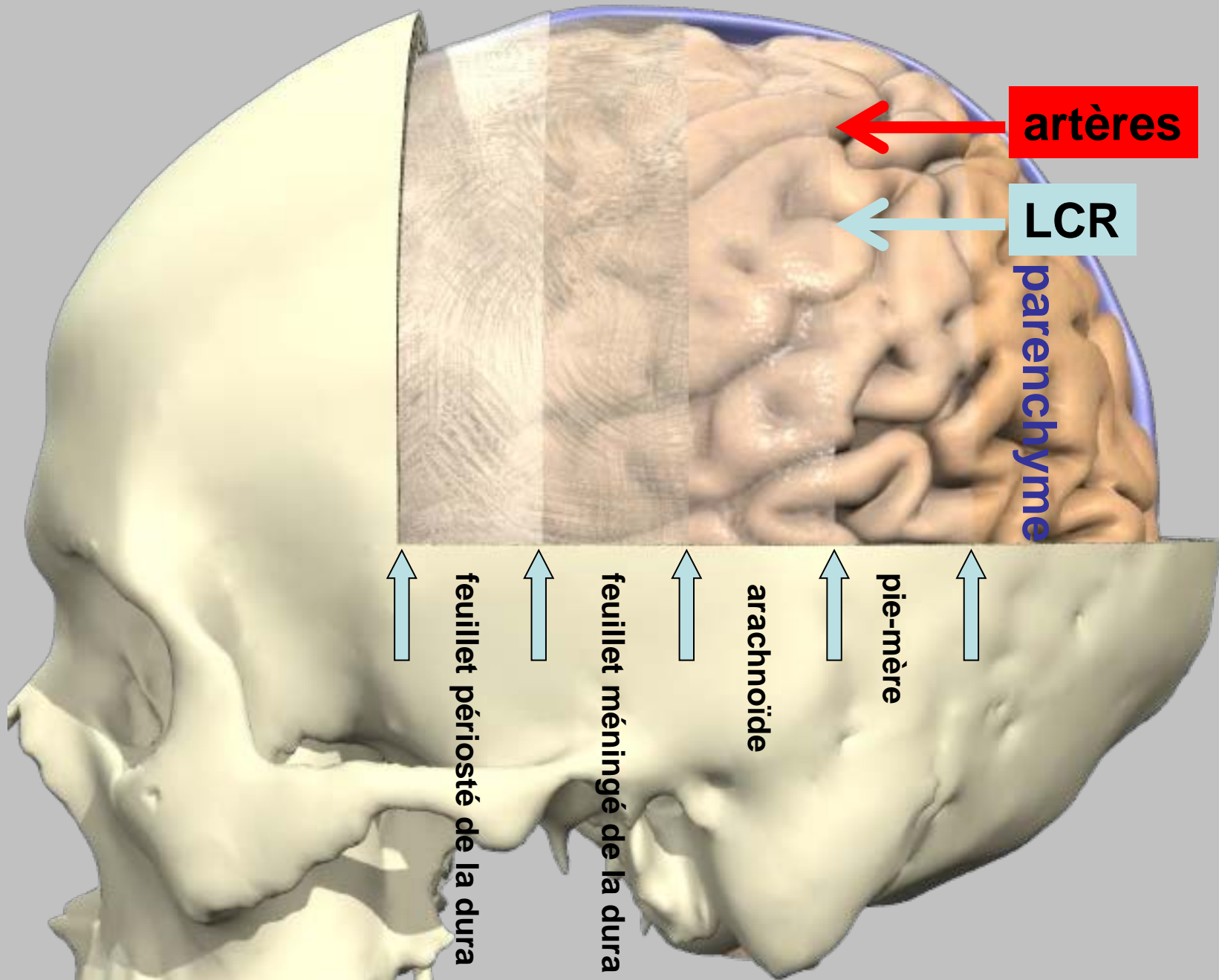
Grands sinus veineux duraux

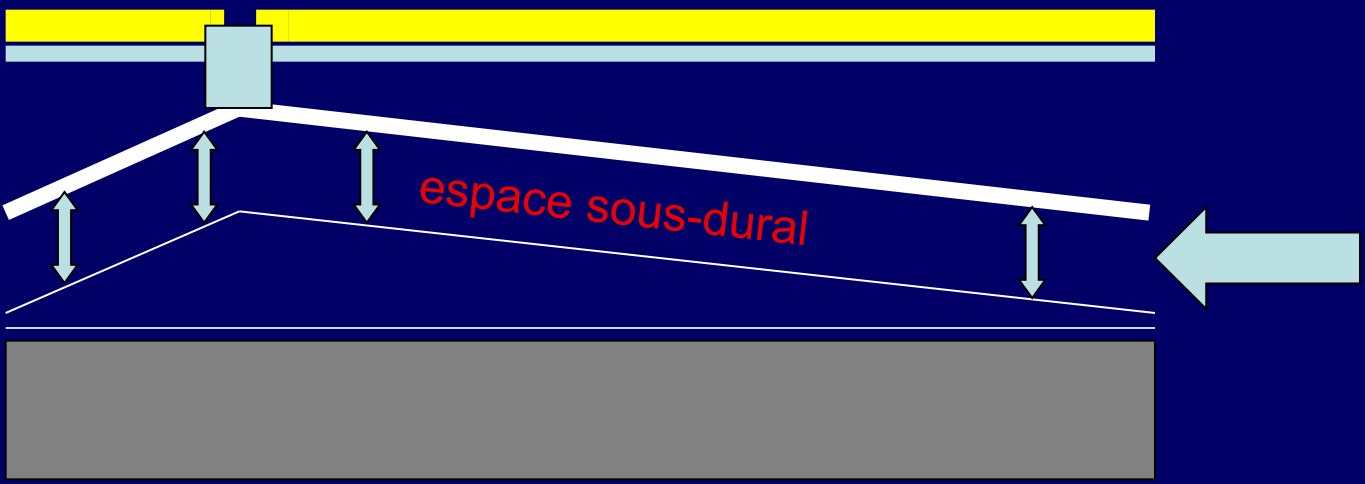
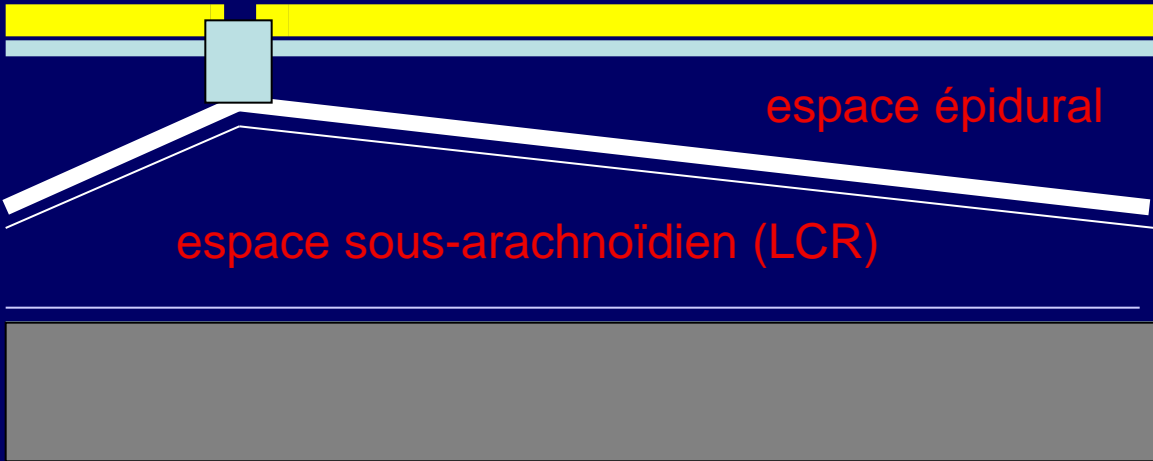
Sertis dans les 2 feuillets de la DM



Artères endocrâniennes

Circulent dans les ESAs





HED



HED



HSD



4 replis durs (feuillet méningé)

Faux du cerveau

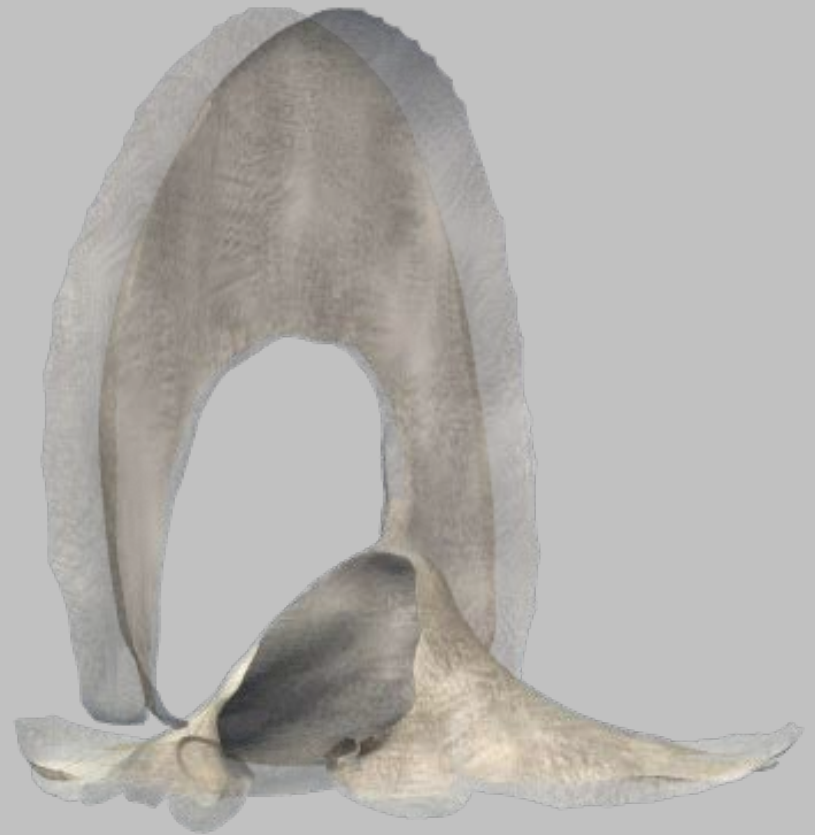
Tente du cervelet

Diaphragme sellaire

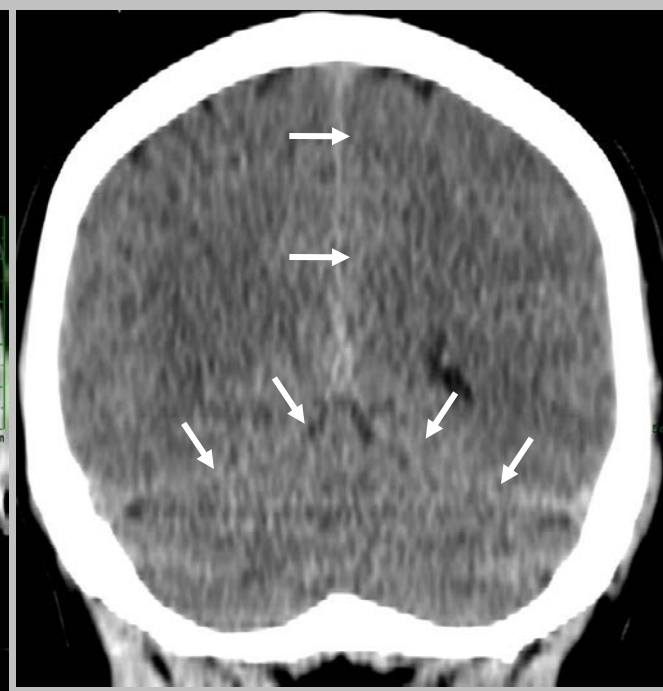
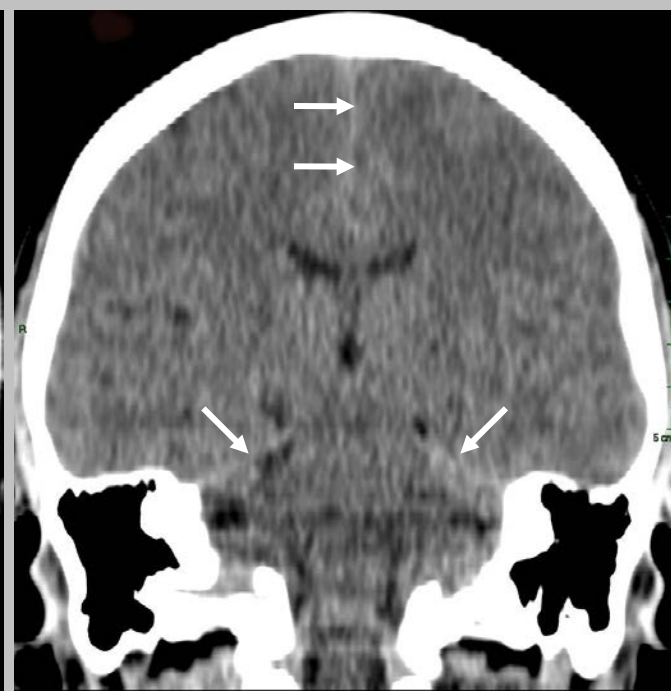
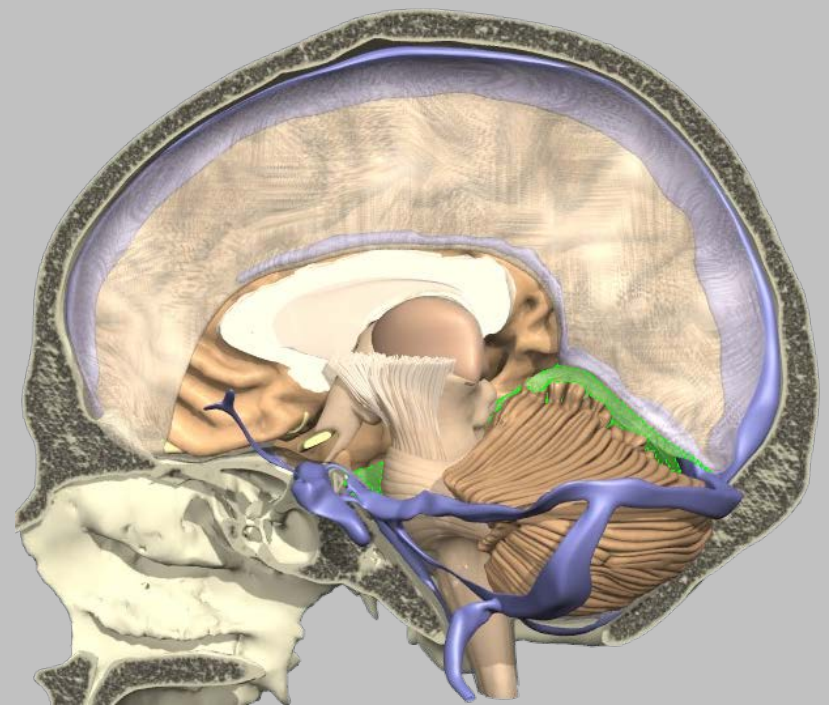
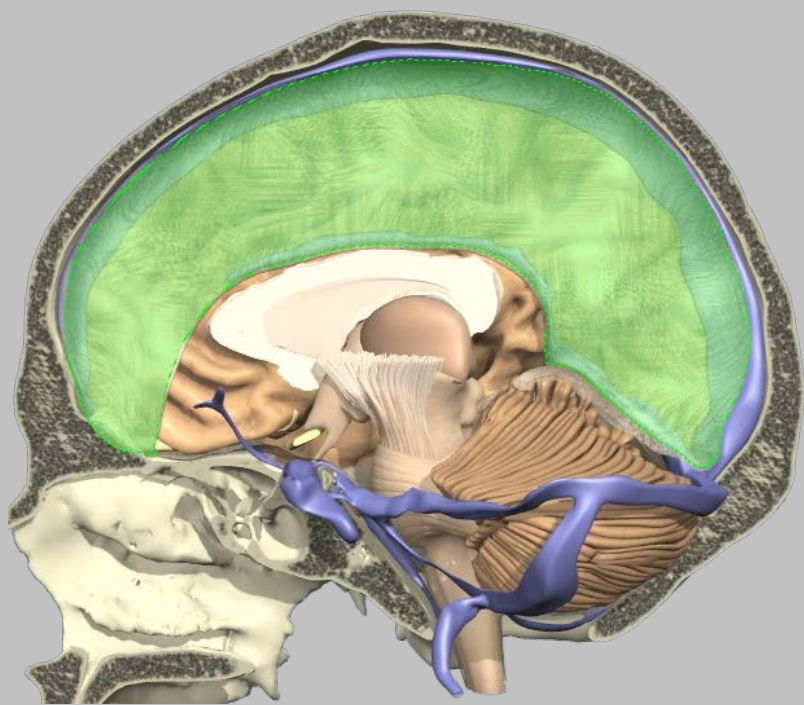
Faux du cervelet

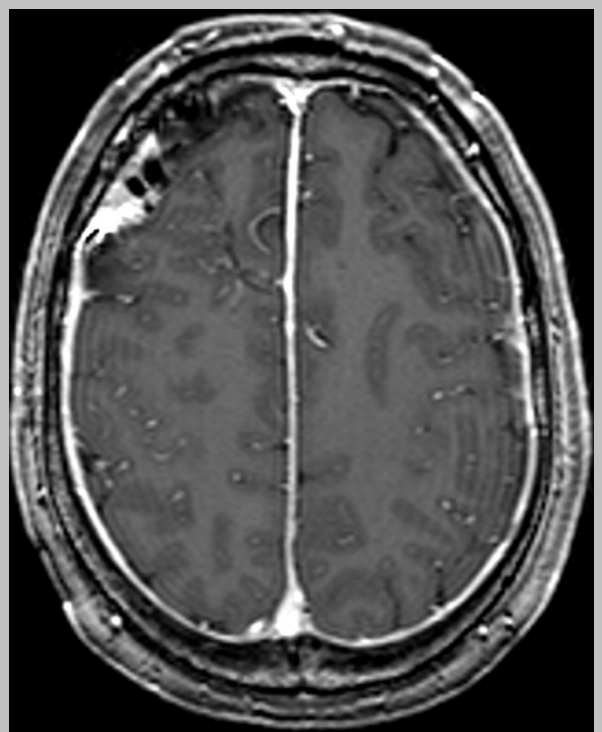


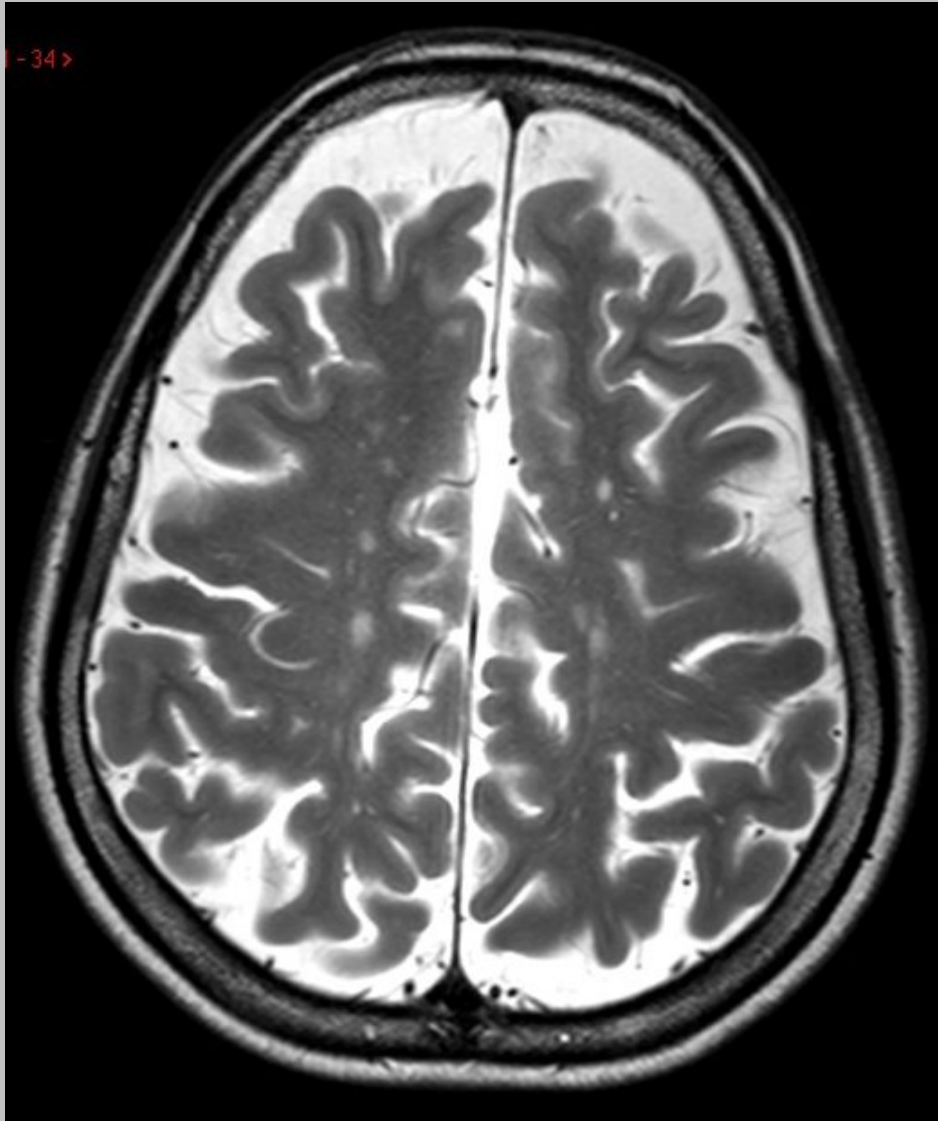
profil



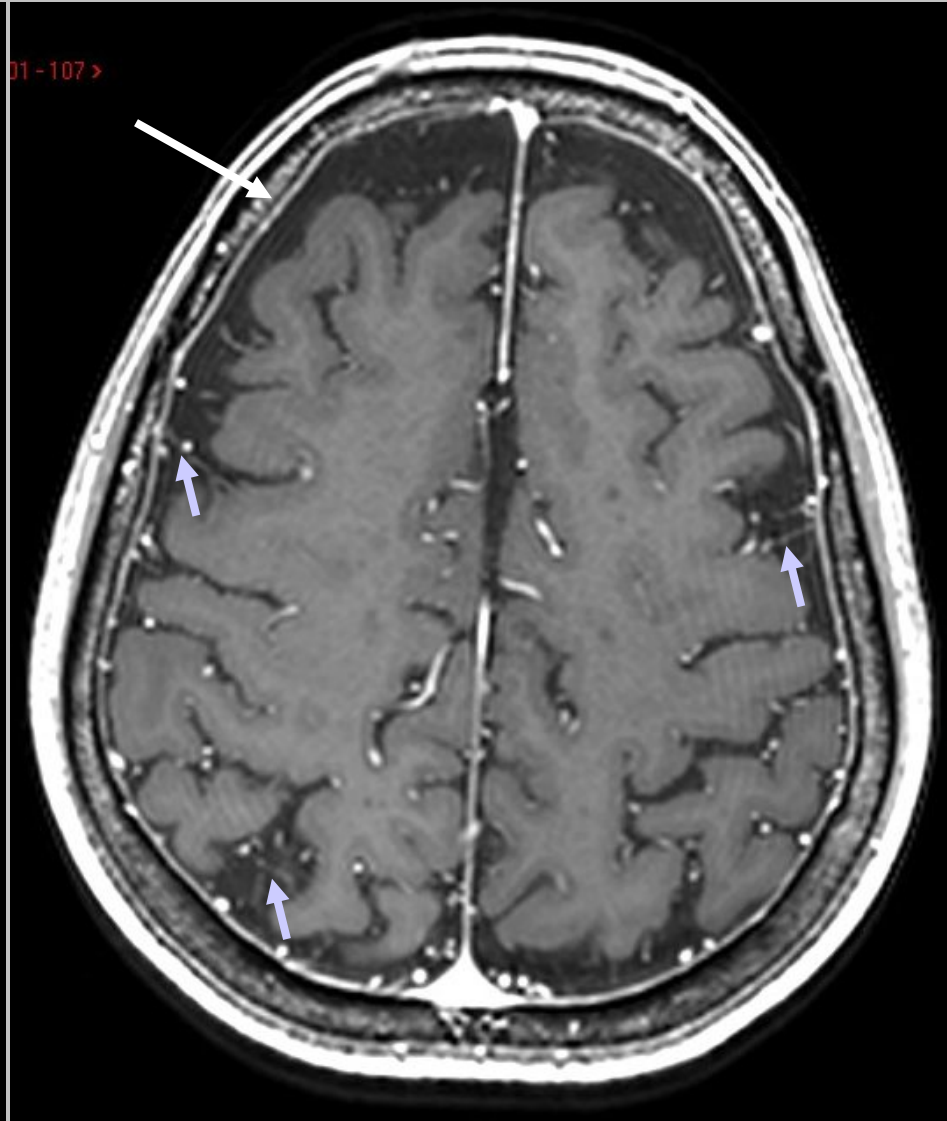
oblique antérieure





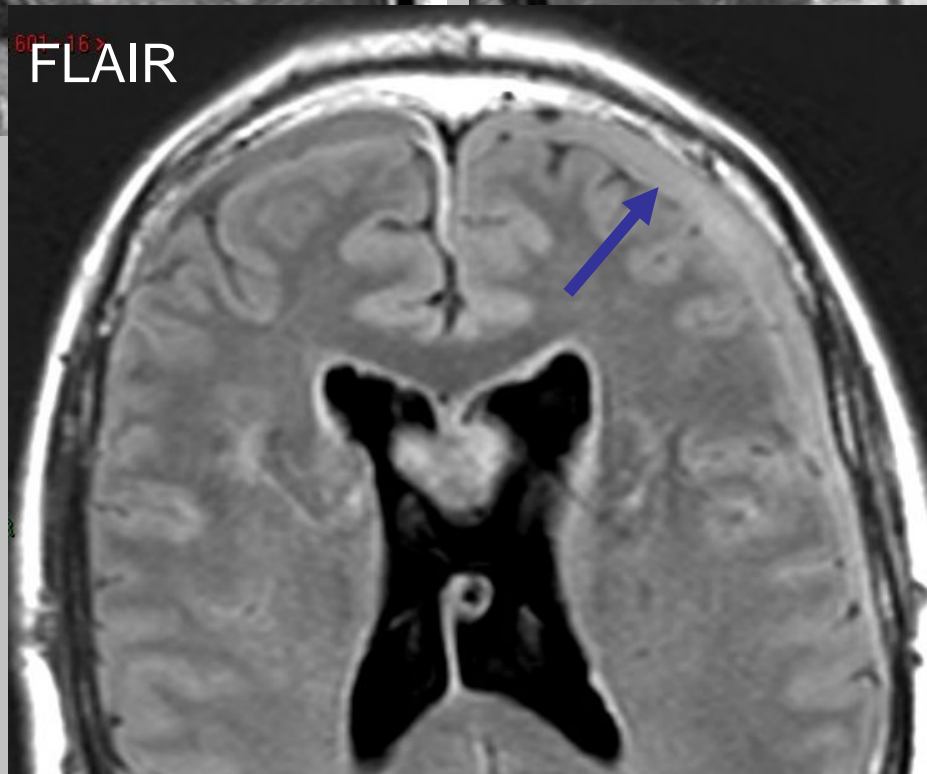
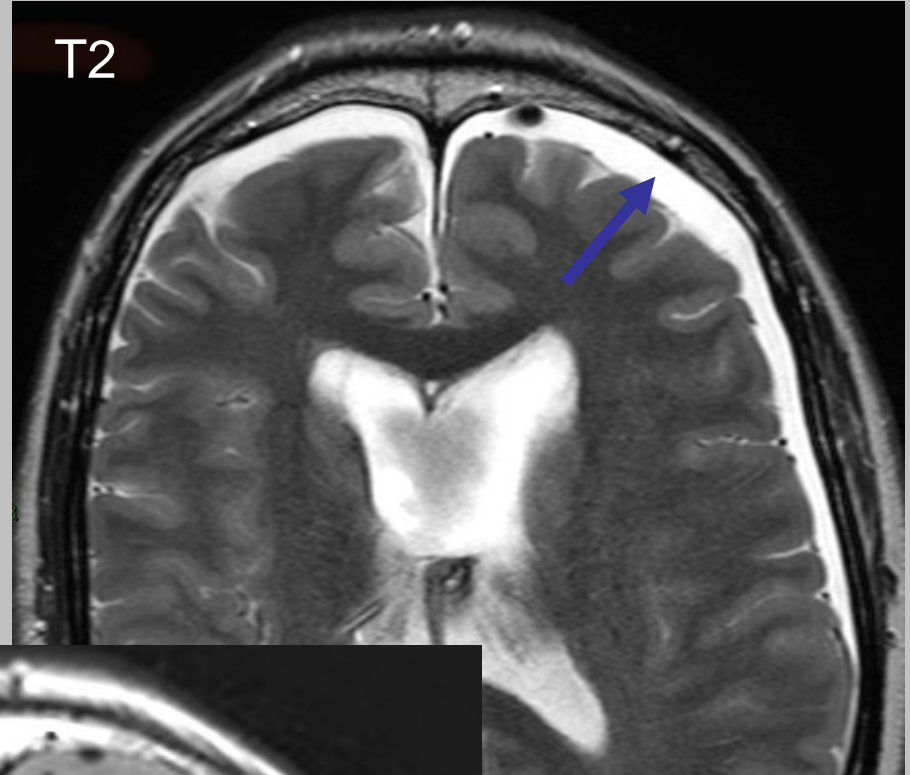
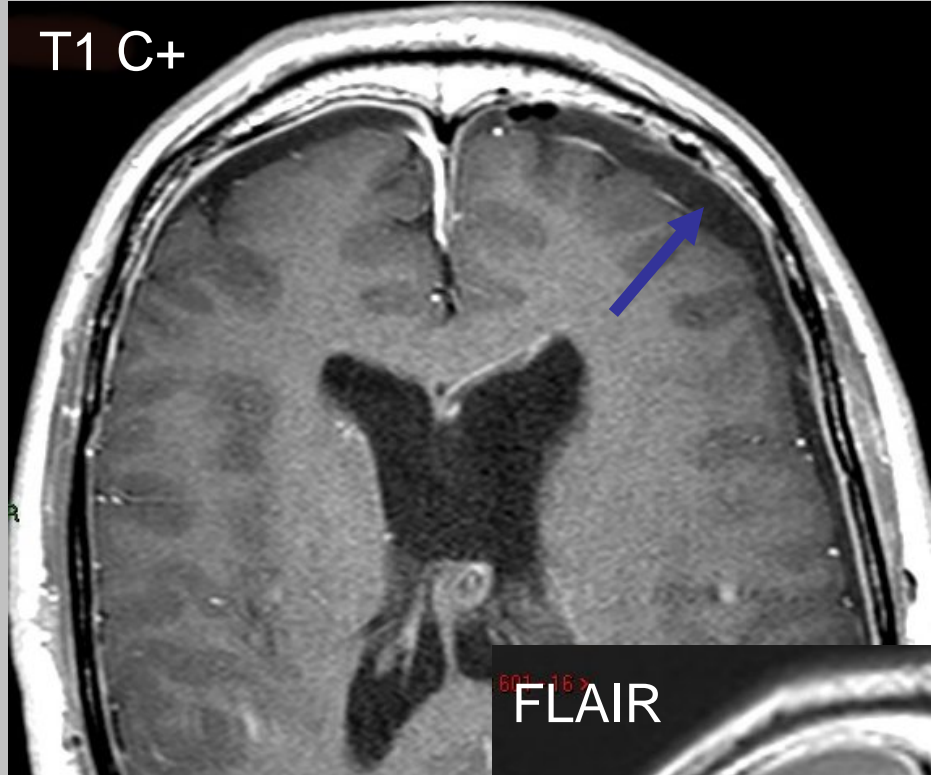


Pondération T2

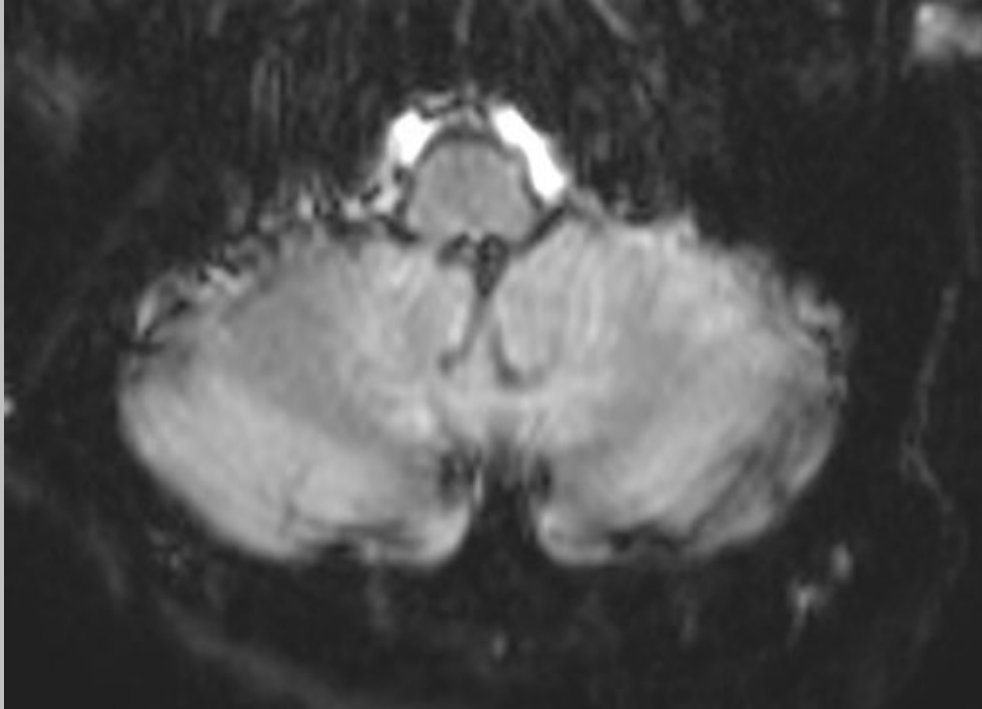


Pondération T1 post C+

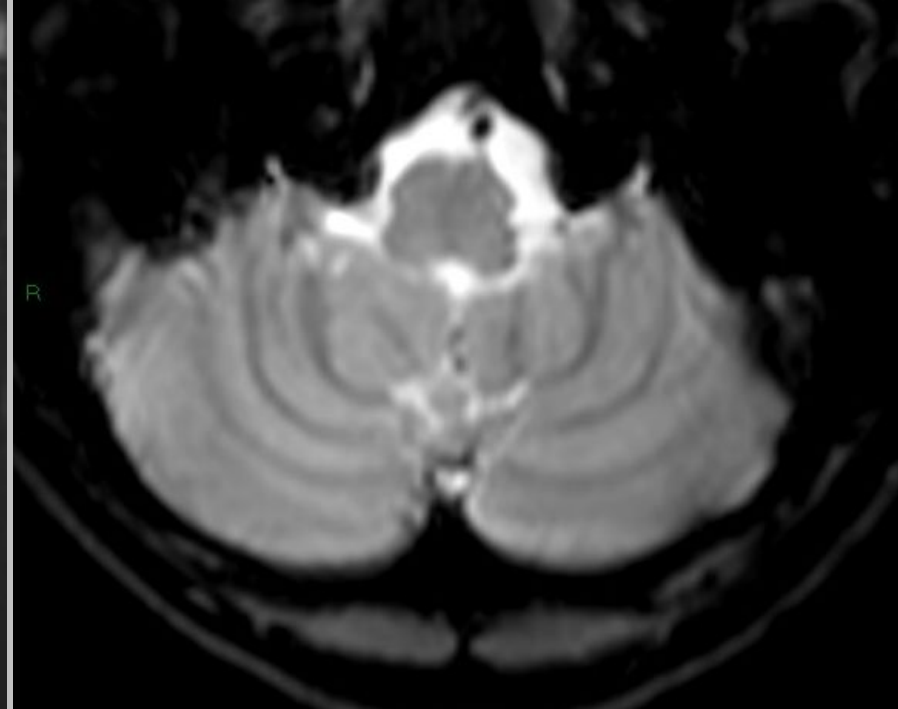
espaces sous-arachnoïdiens: traversé de veinules



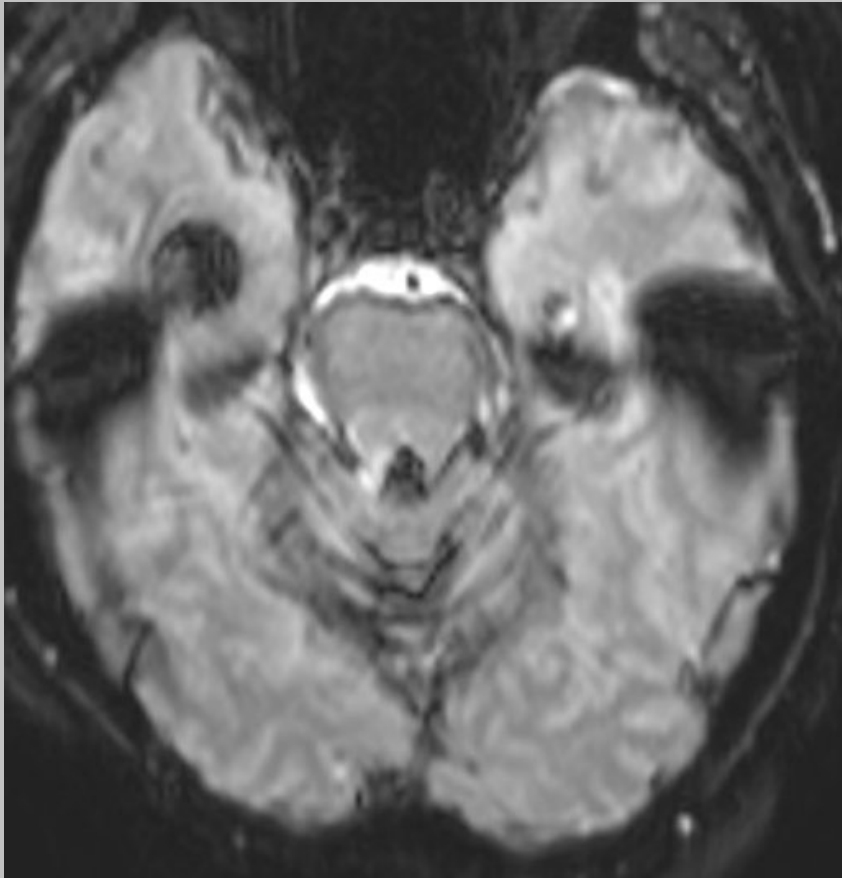
espace
sous-dural
=
collection
sans
vaisseaux



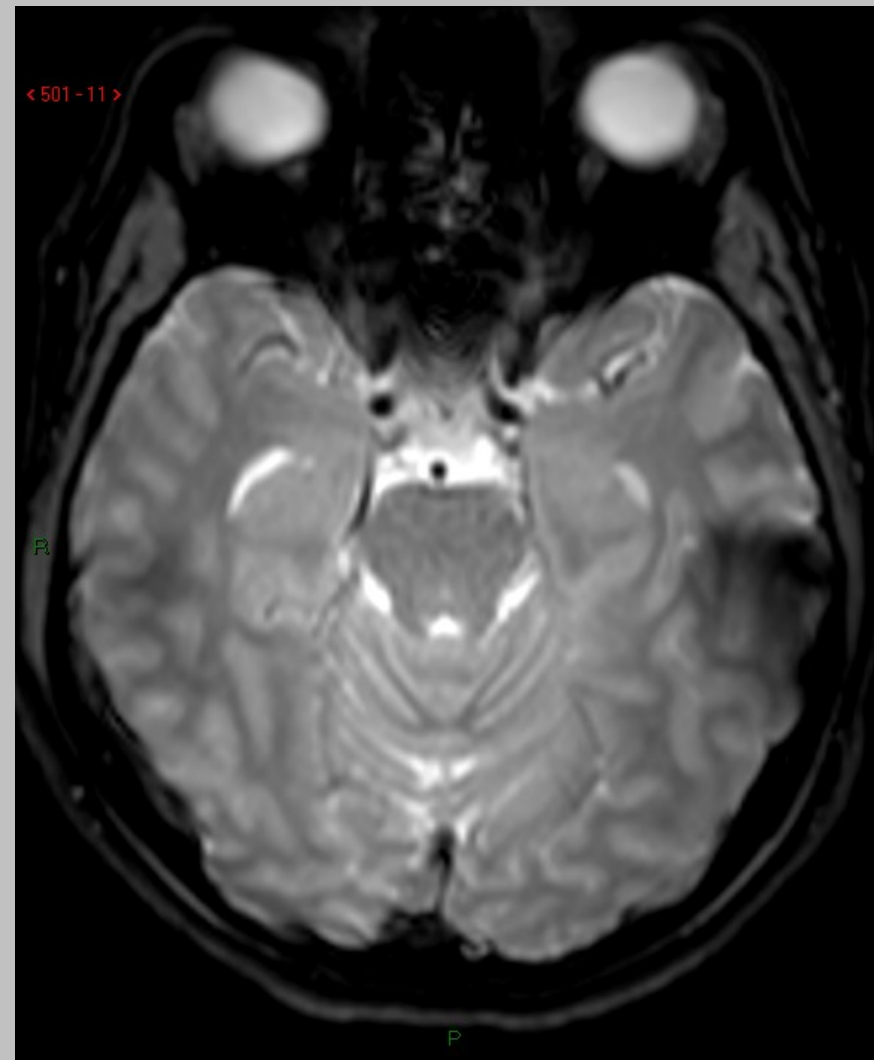
hémossidérose méningée
imprégnant la **pie-mère**



NL



hémossidérose méningée
imprégnant la **pie-mère**



NL