



Secteur des Sciences de la santé

Faculté de Médecine

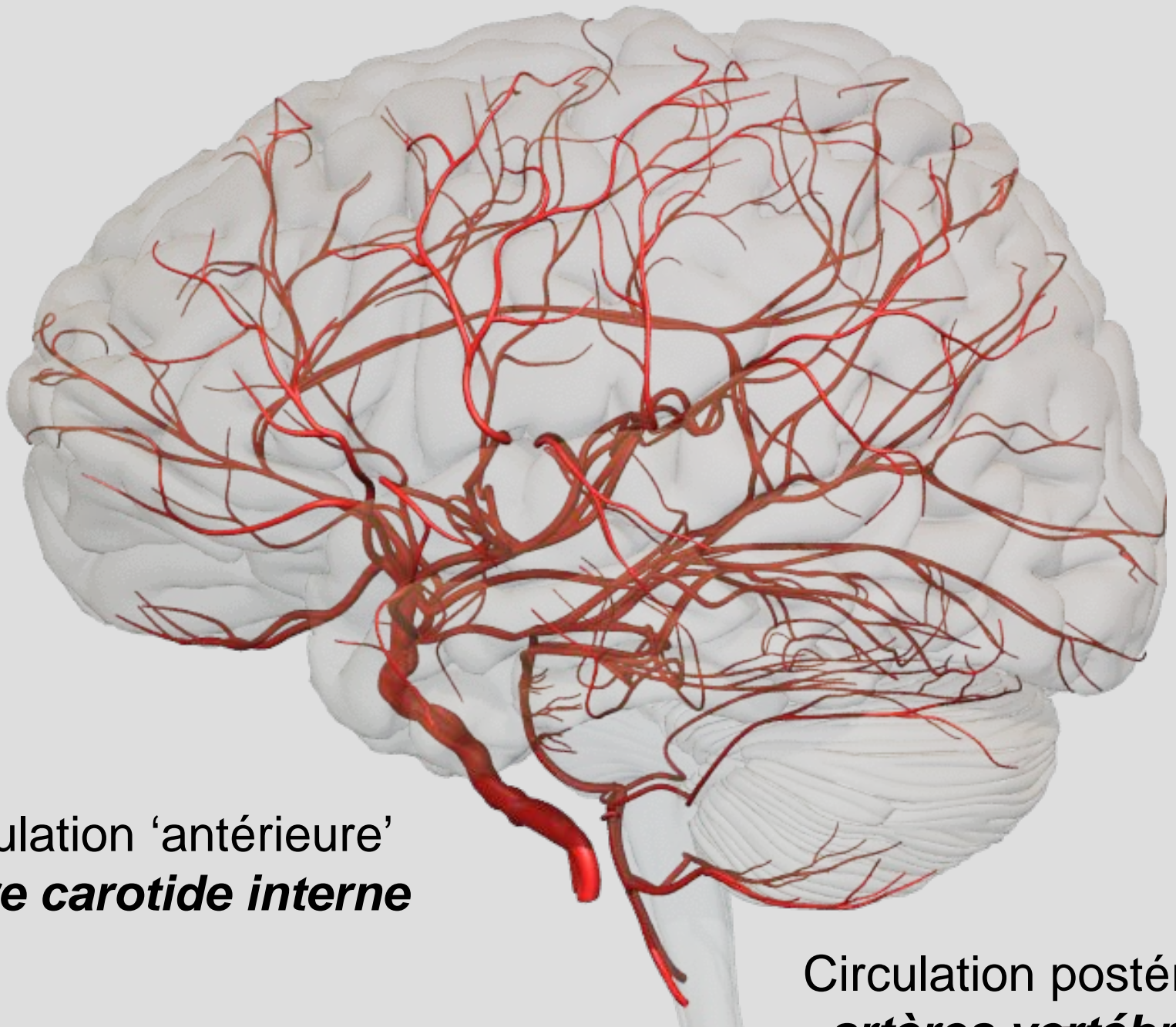
Cours WMDS1311

Année académique 2017-2018

Neuroanatomie radiologique

Pr. Thierry DUPREZ

Module 7: anatomie vasculaire

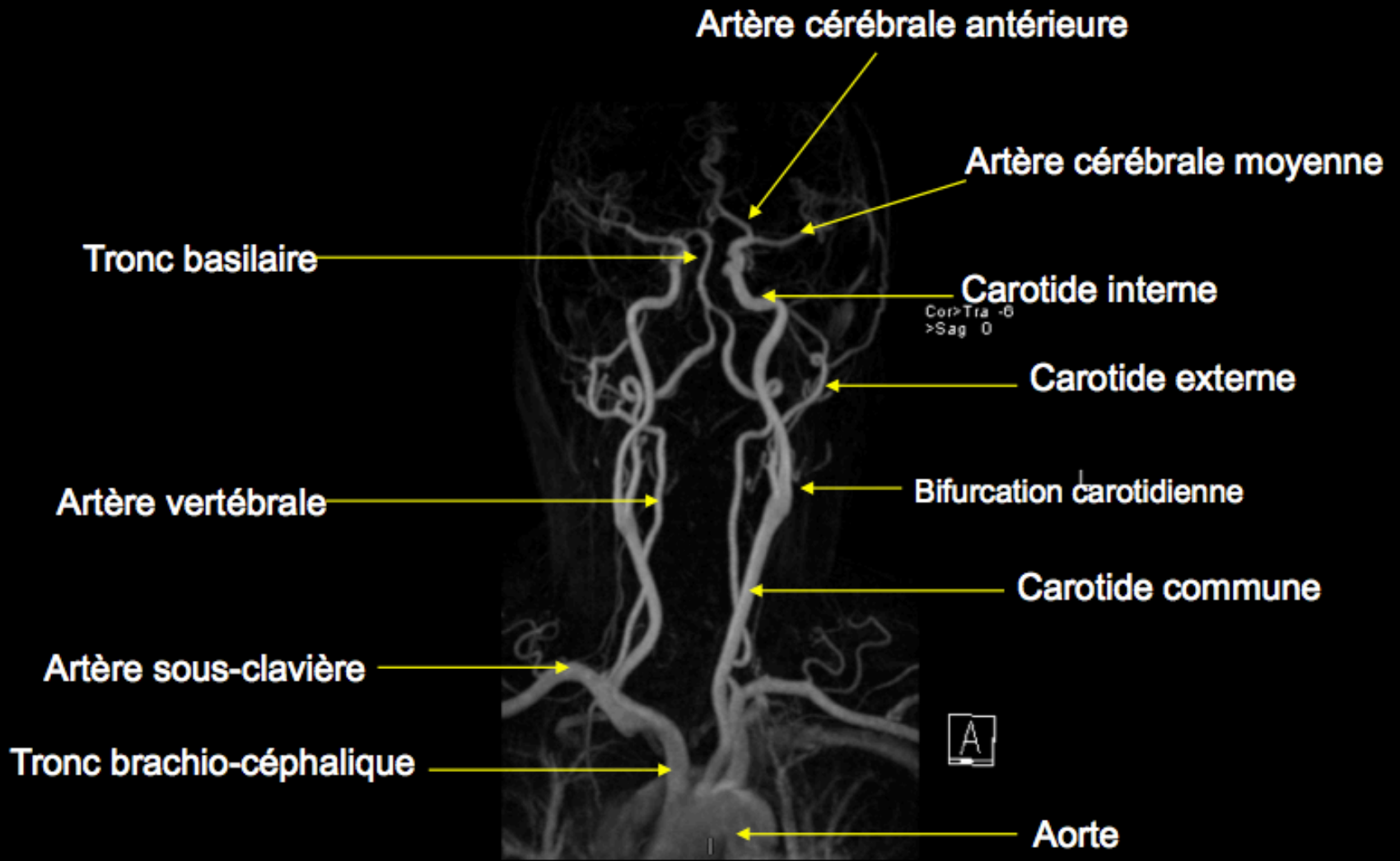


Circulation 'antérieure'
artère carotide interne

Circulation postérieure
artères vertébrales







**Carotide intracrânienne
(siphon carotidien)**

Carotide externe

Carotide interne

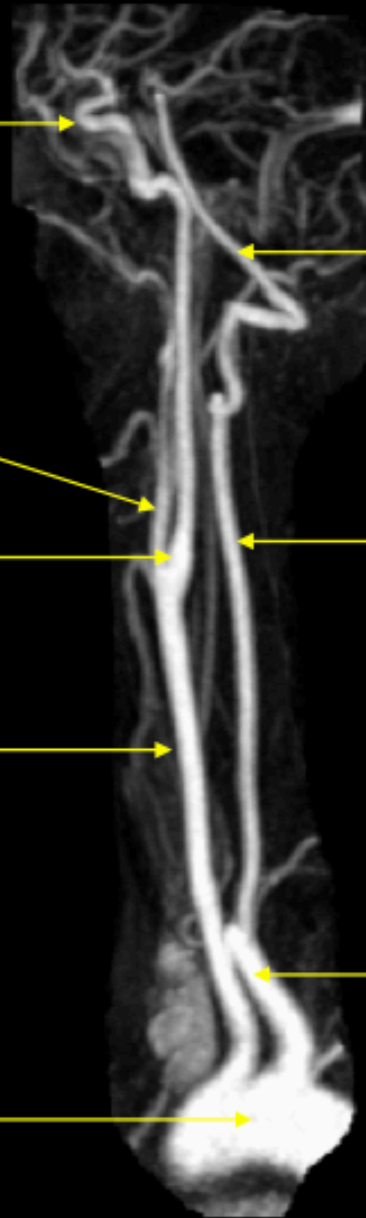
Carotide commune

Crosse aortique

Vertébrale intracrânienne

Vertébrale cervicale

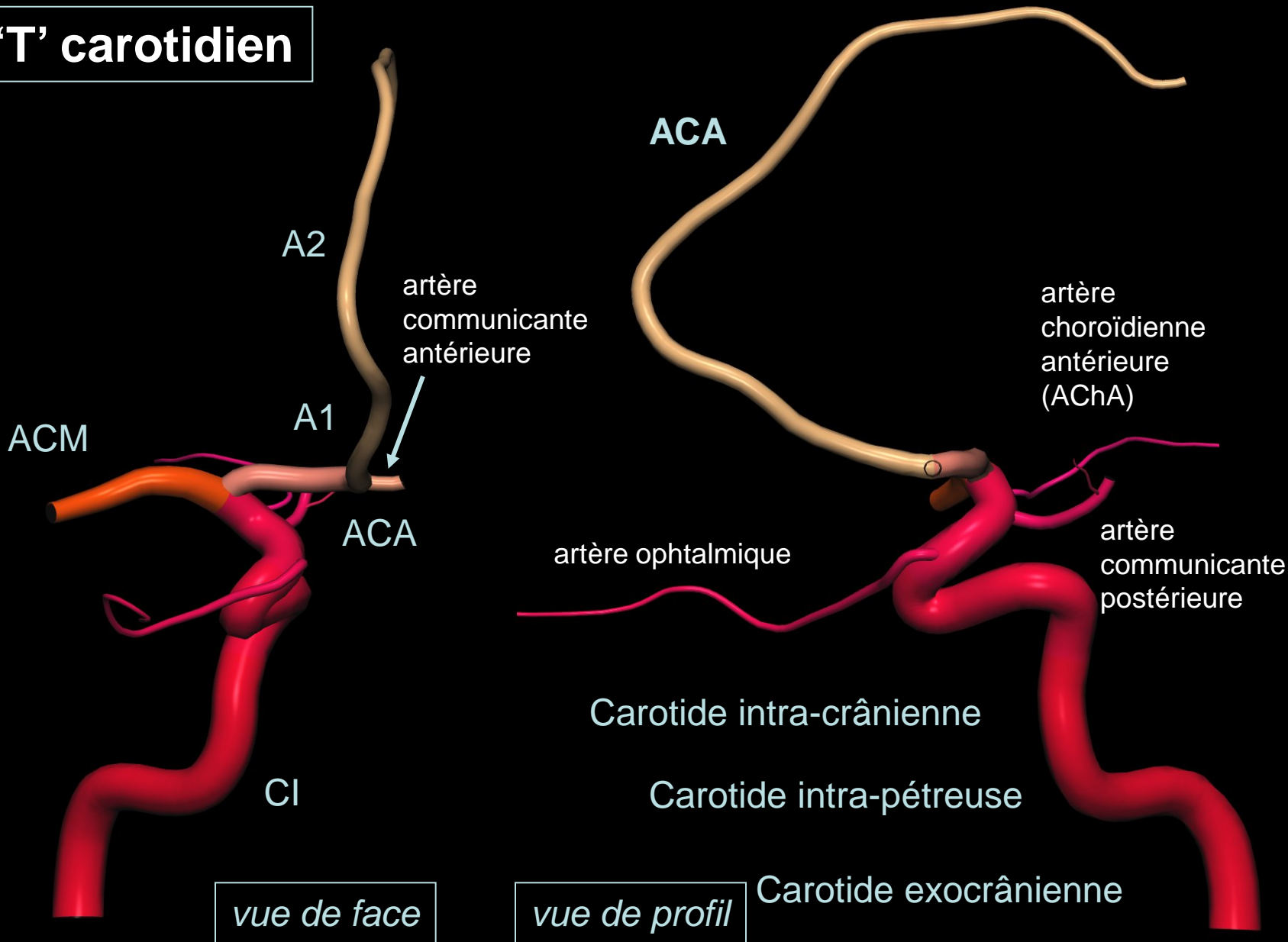
Sous-clavière

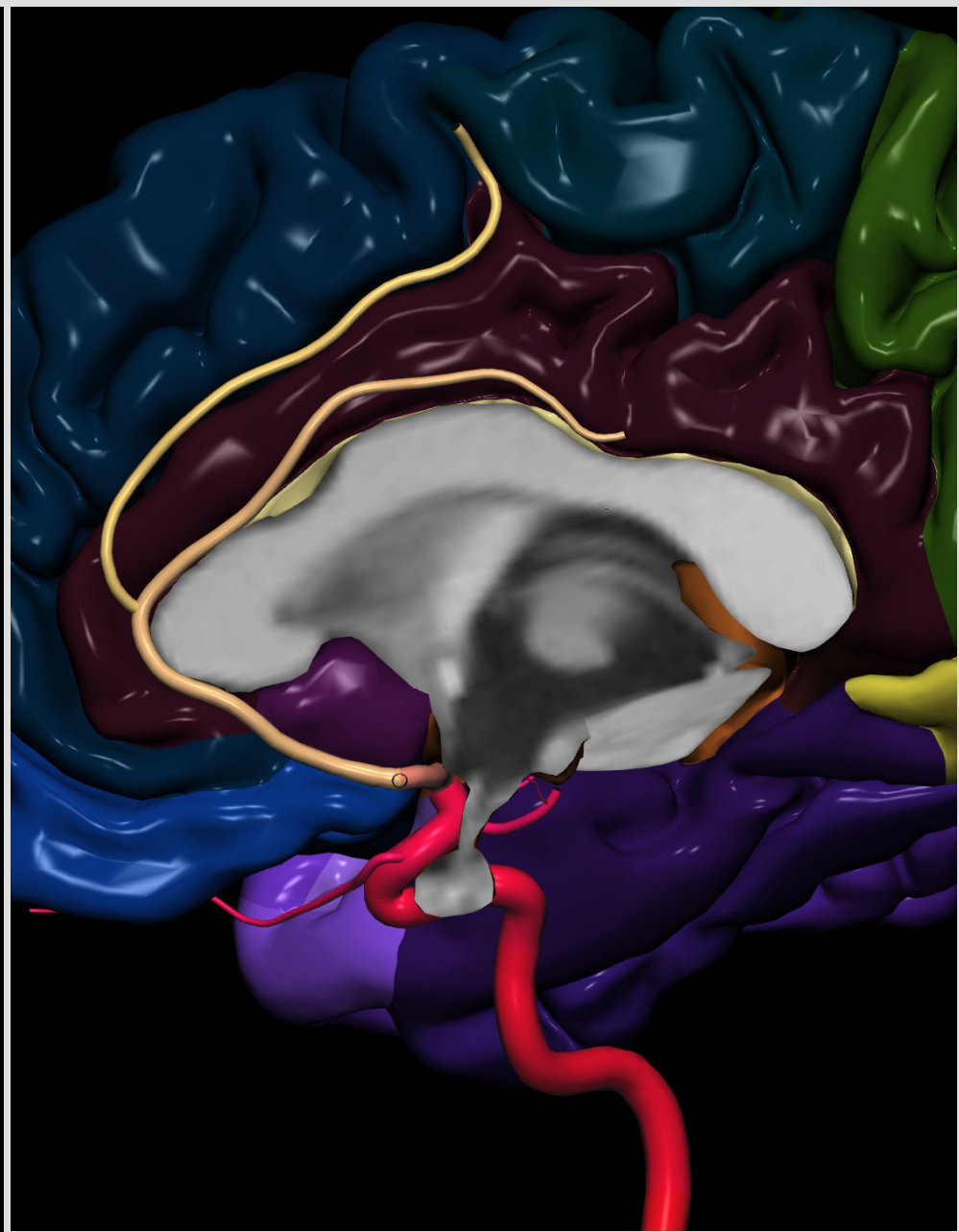
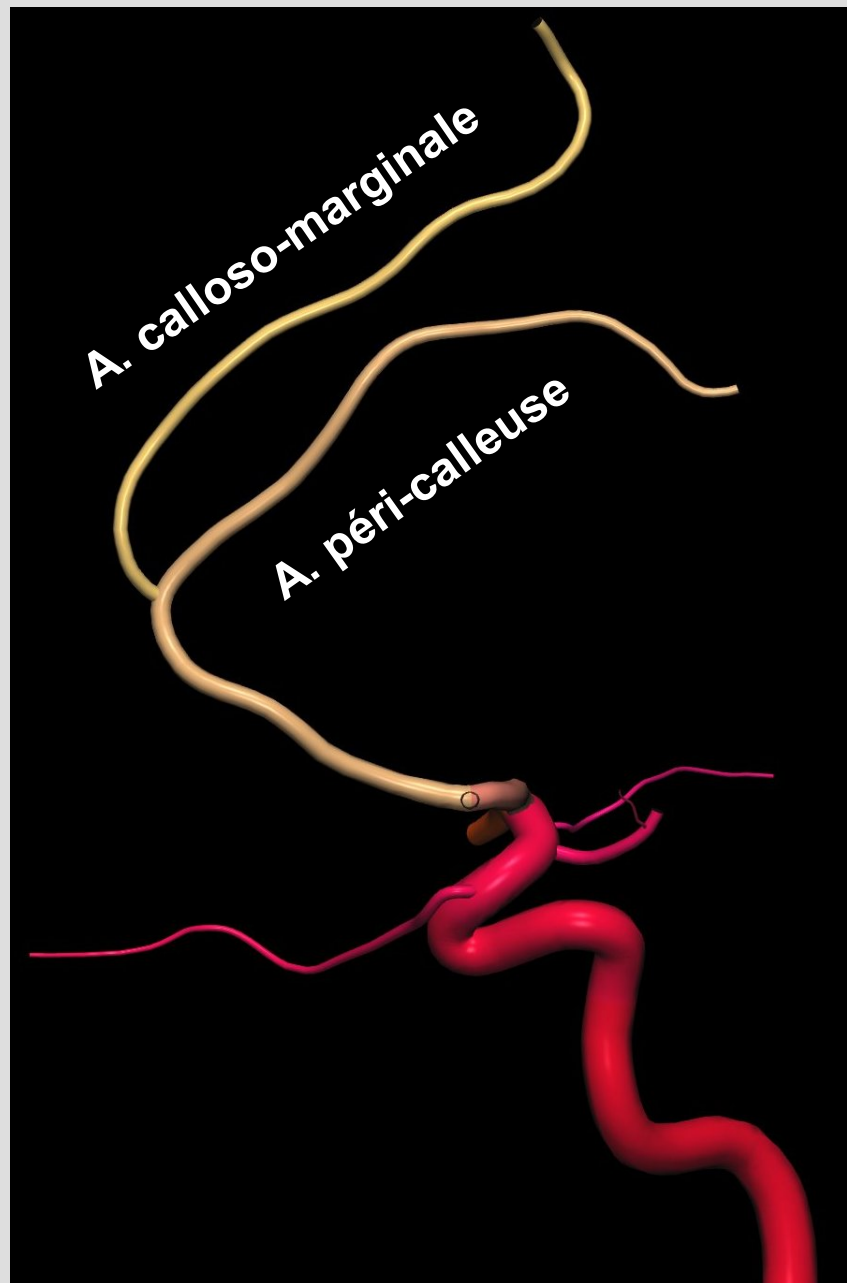


ACA

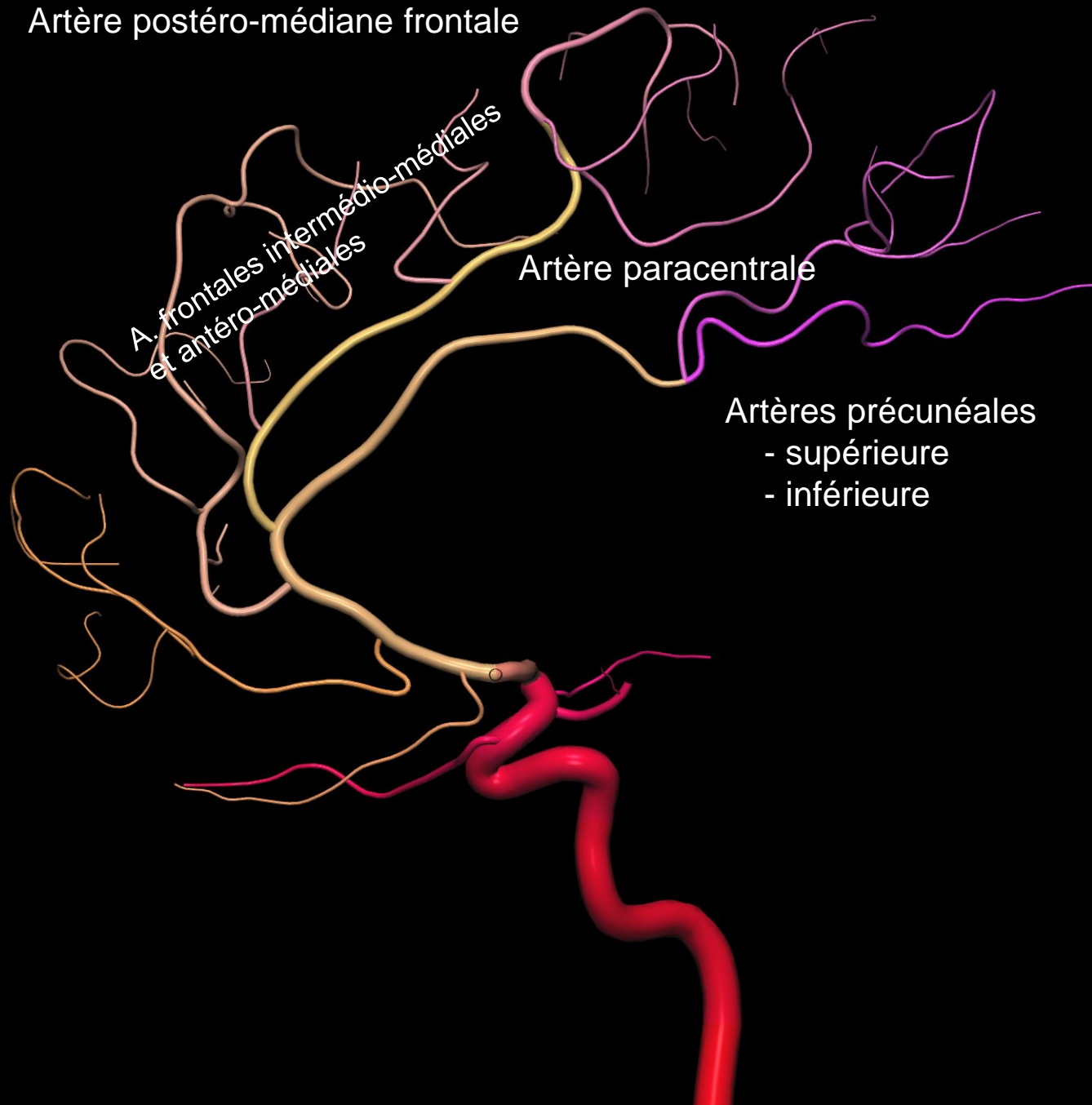
Artère Cérébrale Antérieure

'T' carotidien





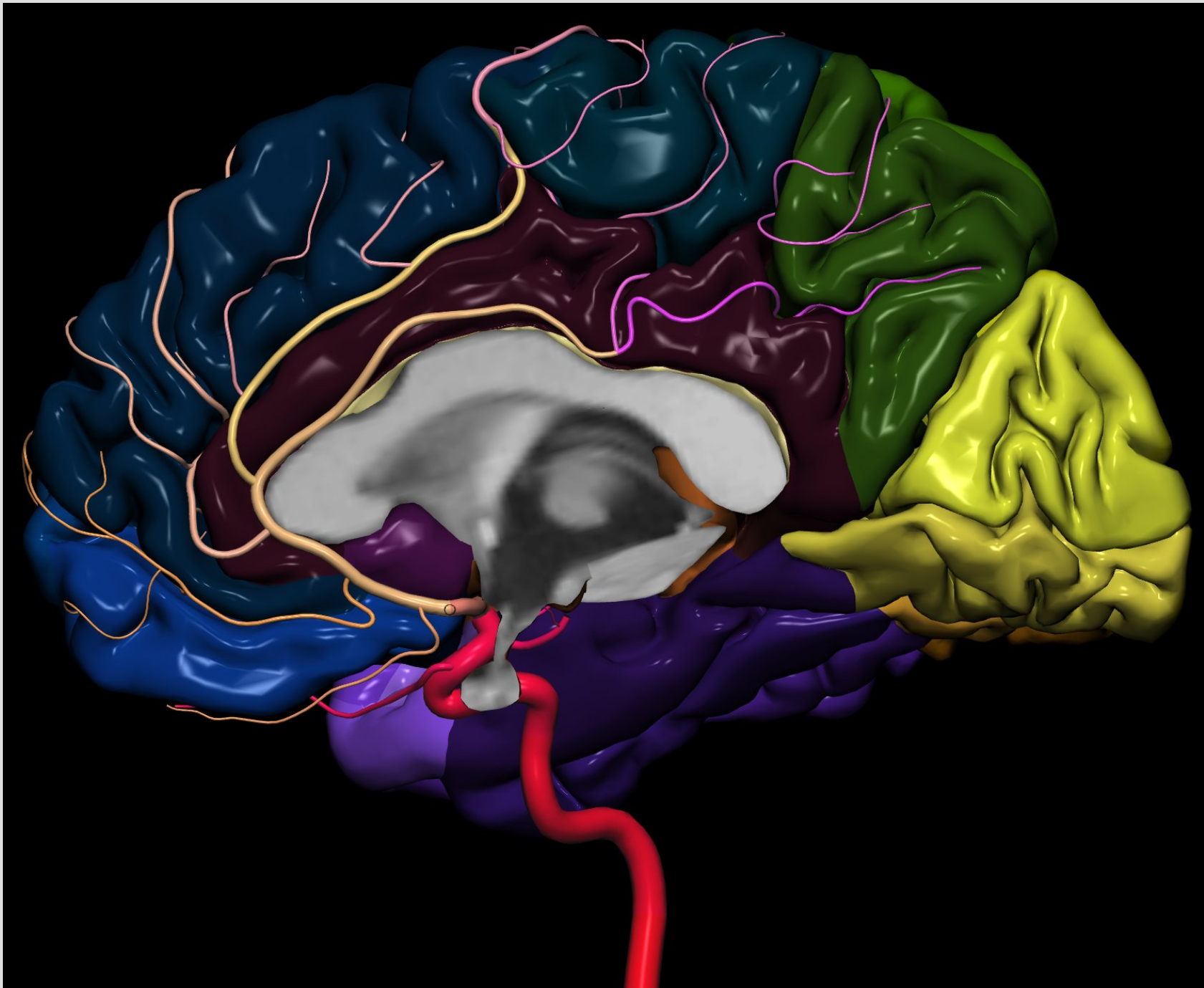
Artère postéro-médiane frontale



A. frontales intermedio-médiales
et antéro-médiales

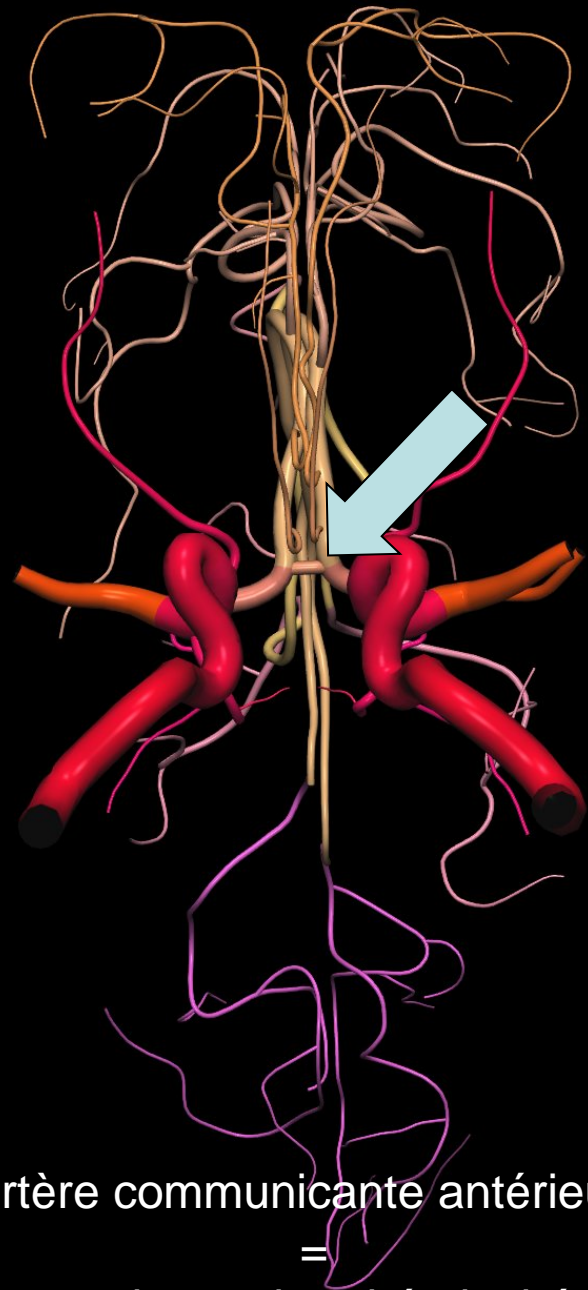
Artère paracentrale

Artères précunéales
- supérieure
- inférieure

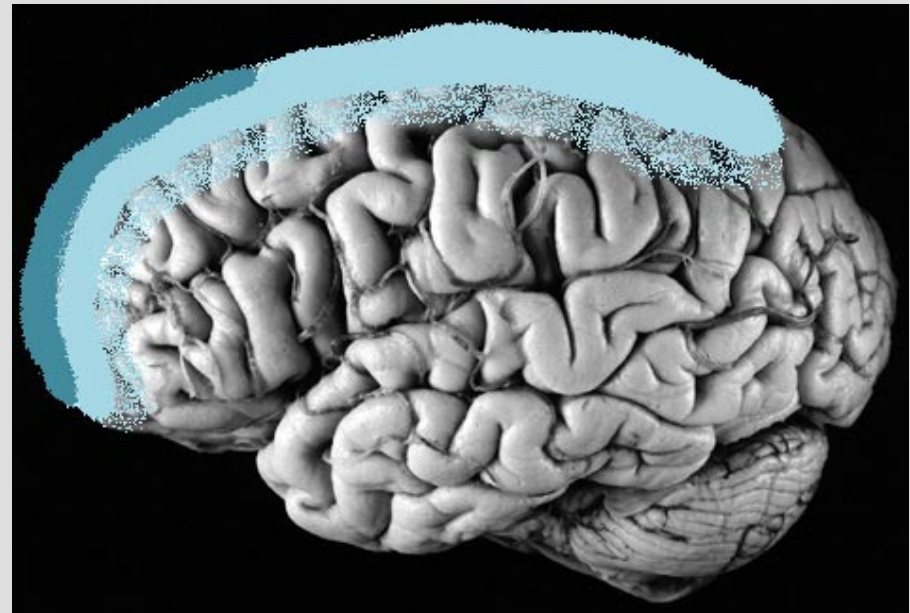
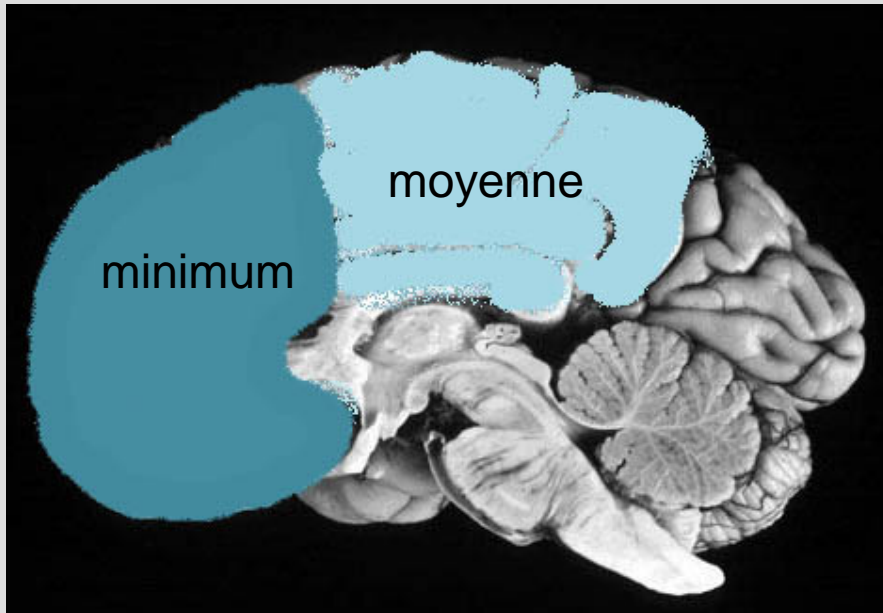
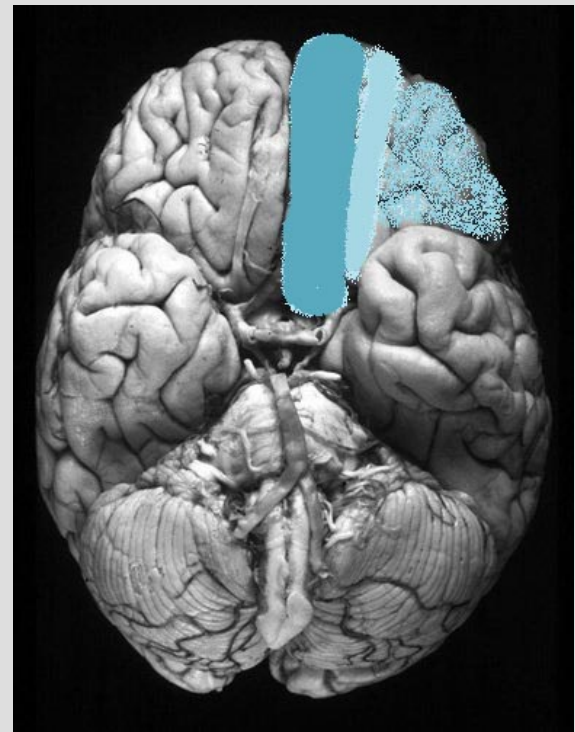
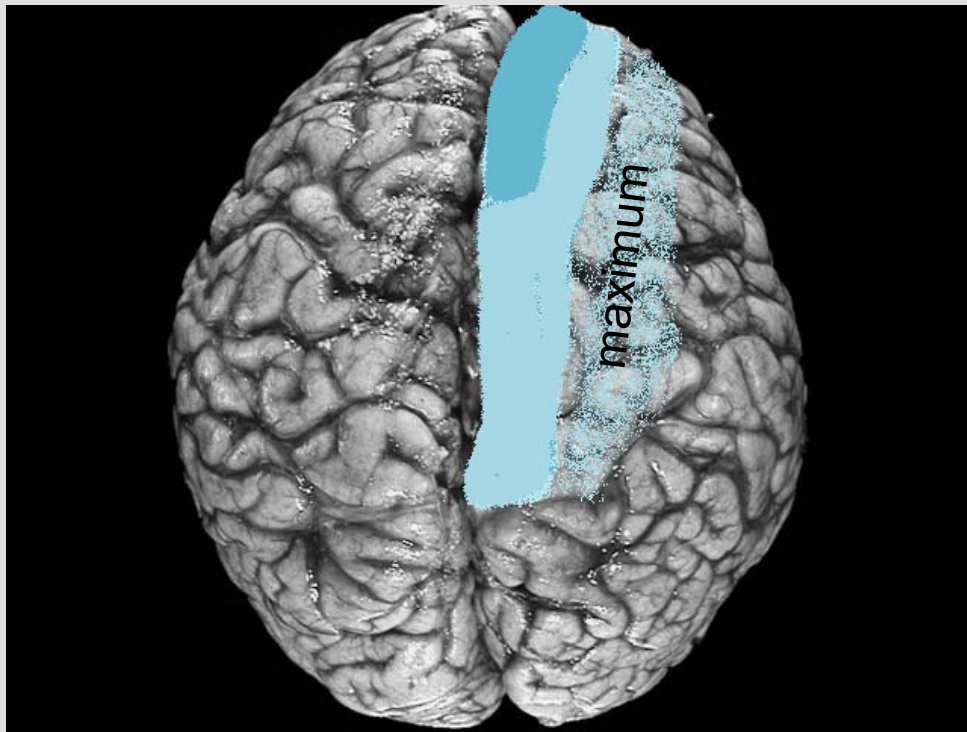


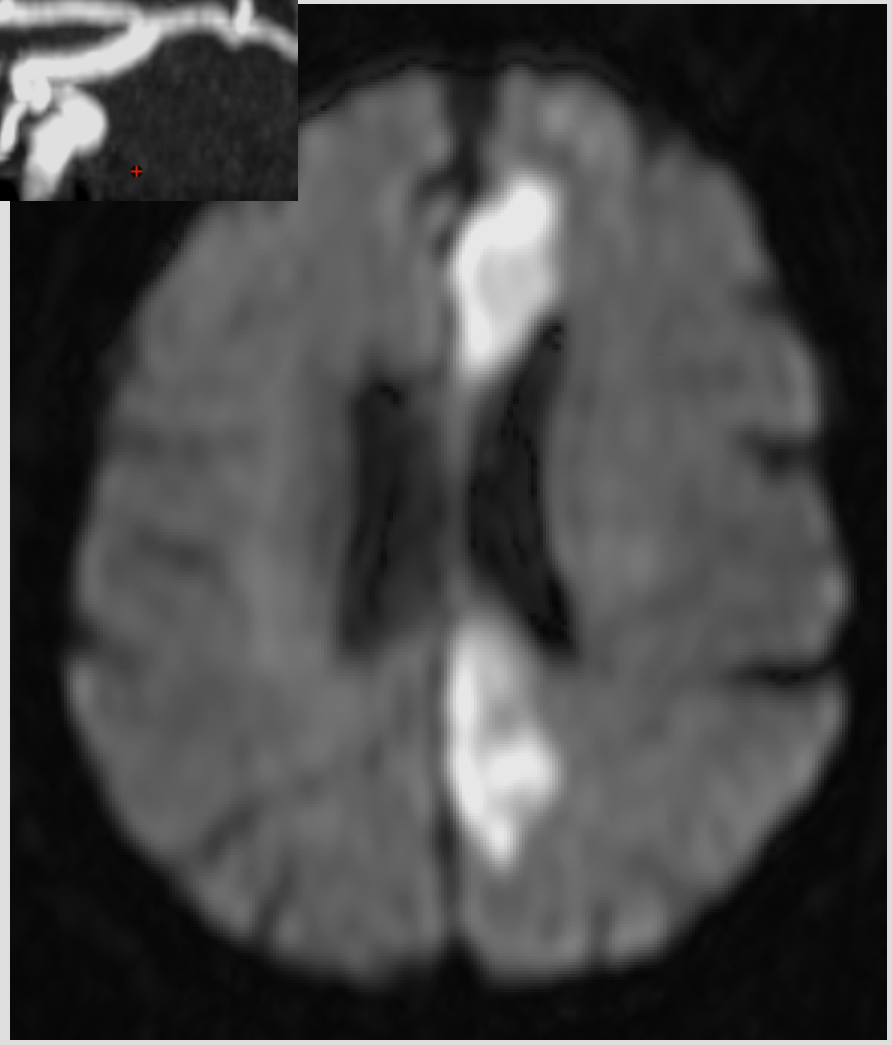
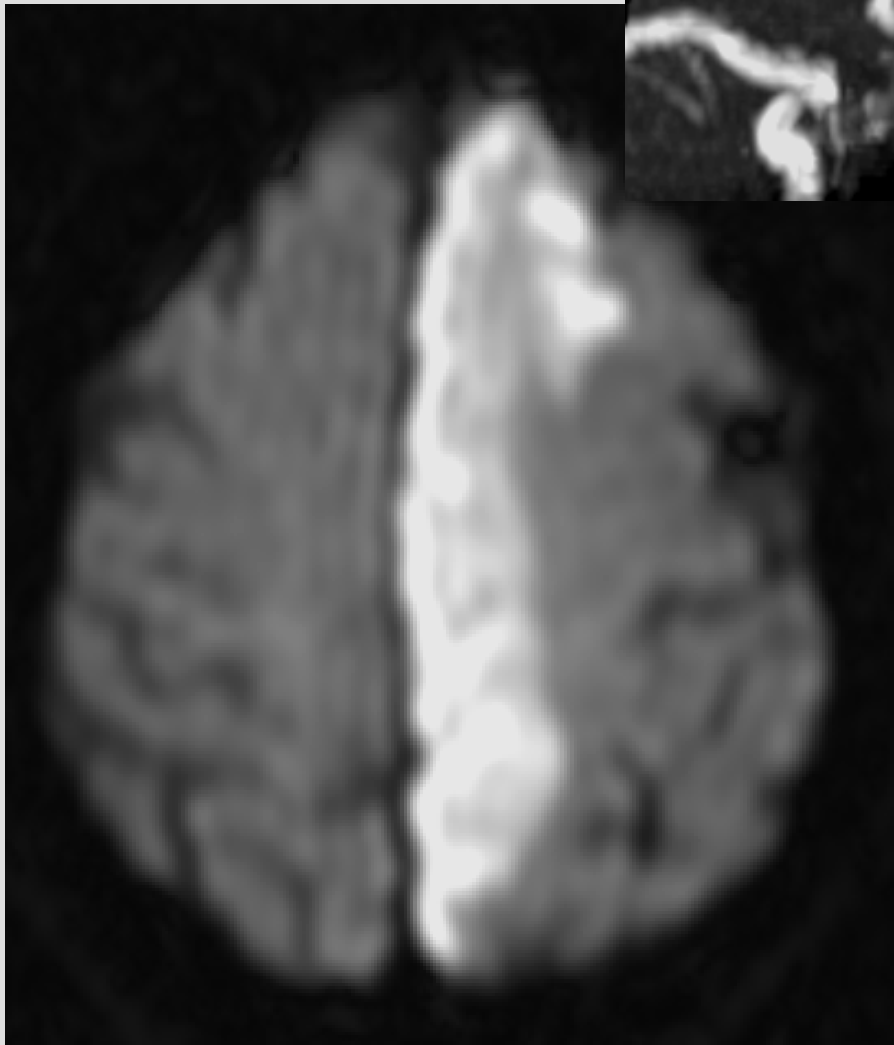
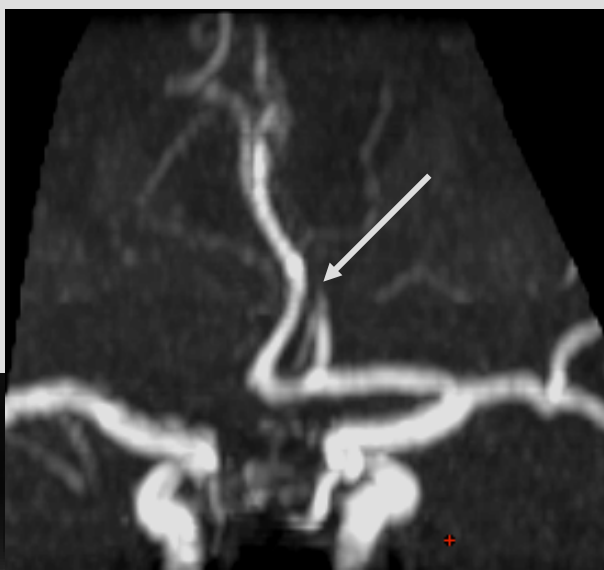


arborescence interhémisphérique



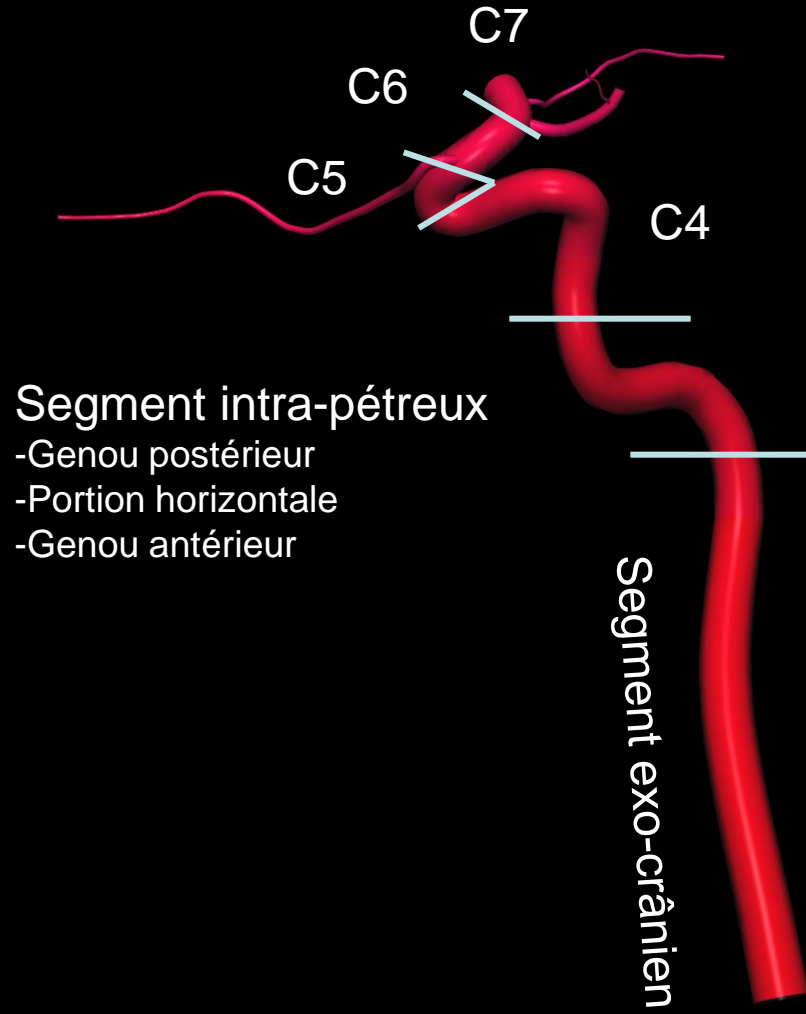
artère communicante antérieure
=
communicante interhémisphérique





ACM

Artère Cérébrale Moyenne



Segment intra-pétreux

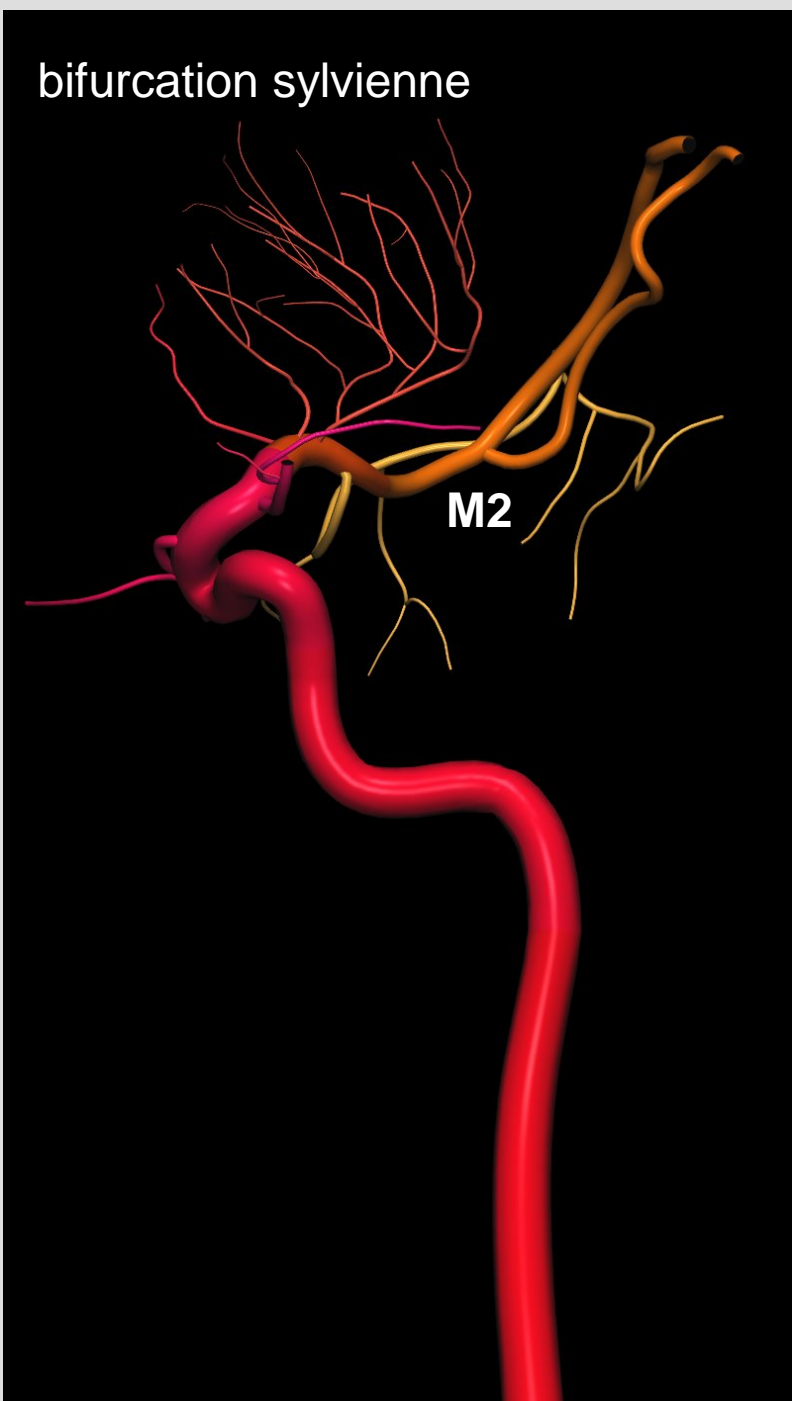
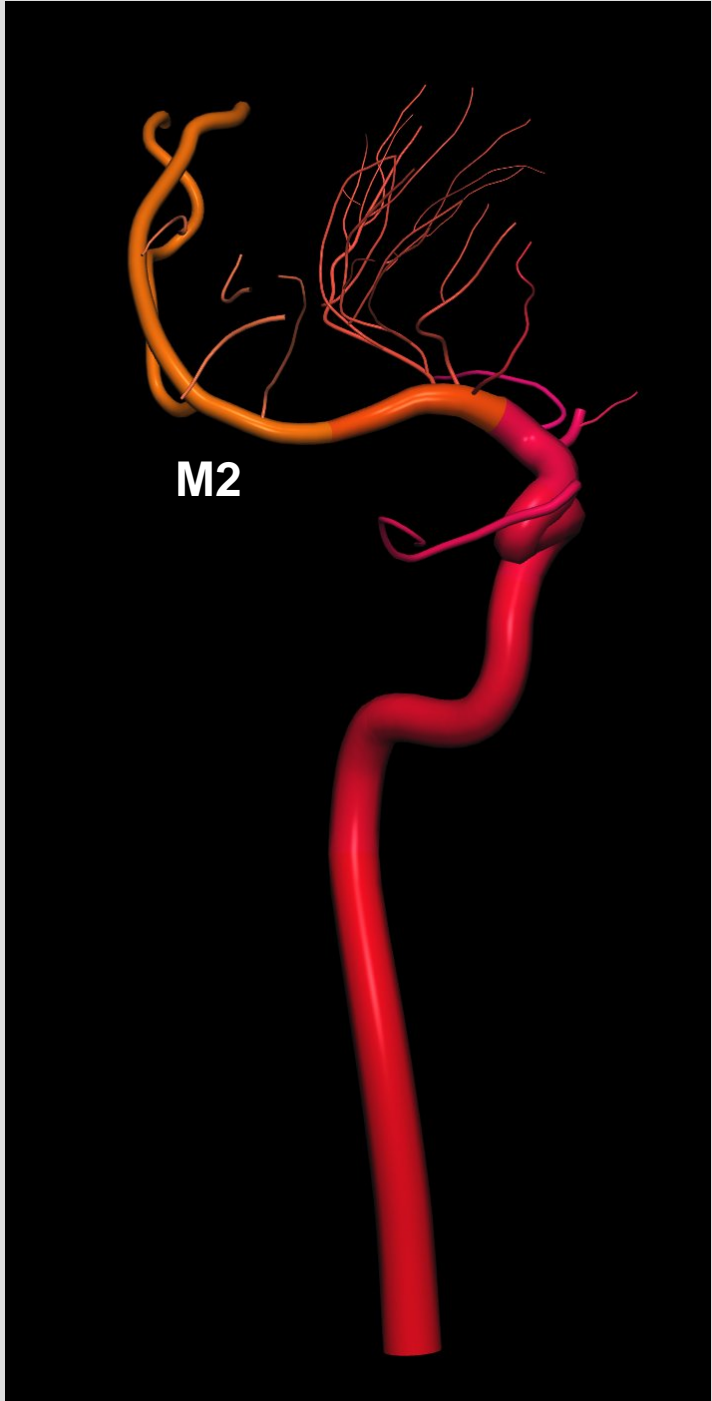
- Genou postérieur
- Portion horizontale
- Genou antérieur

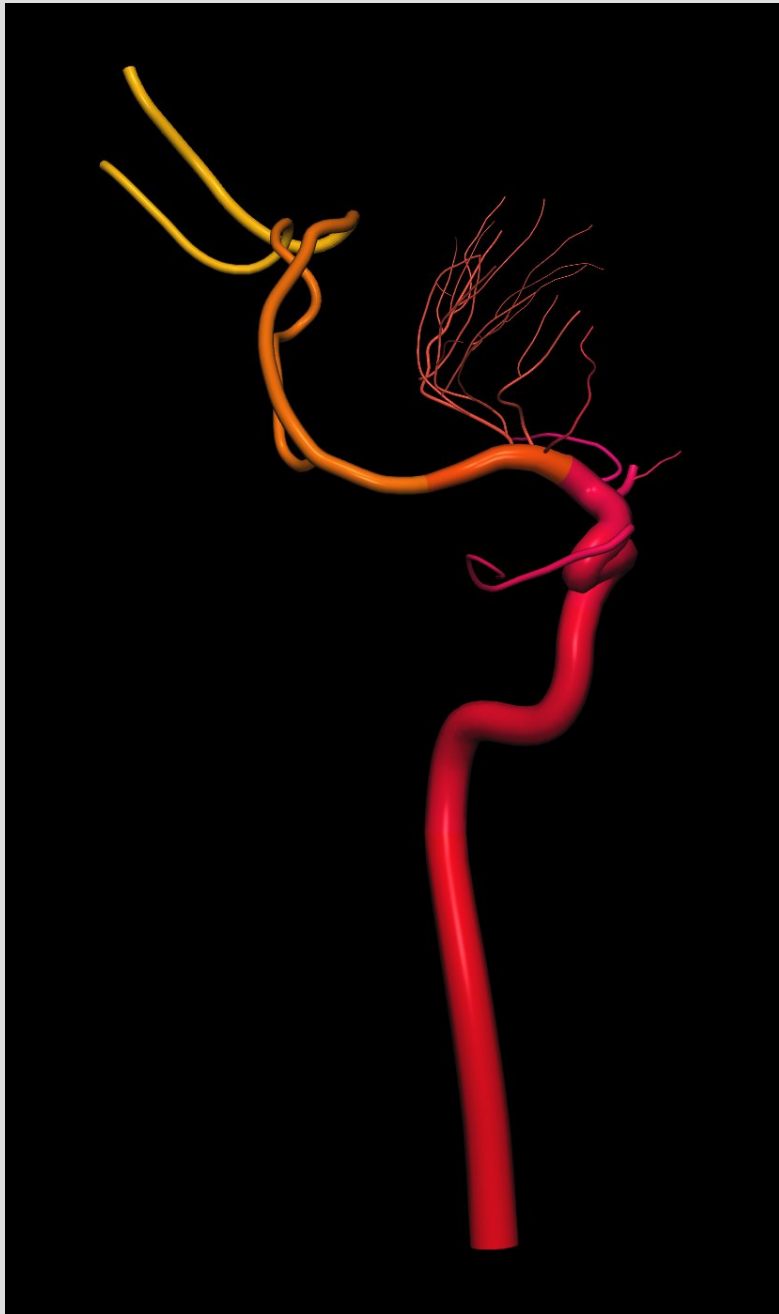
Segment exo-crânien

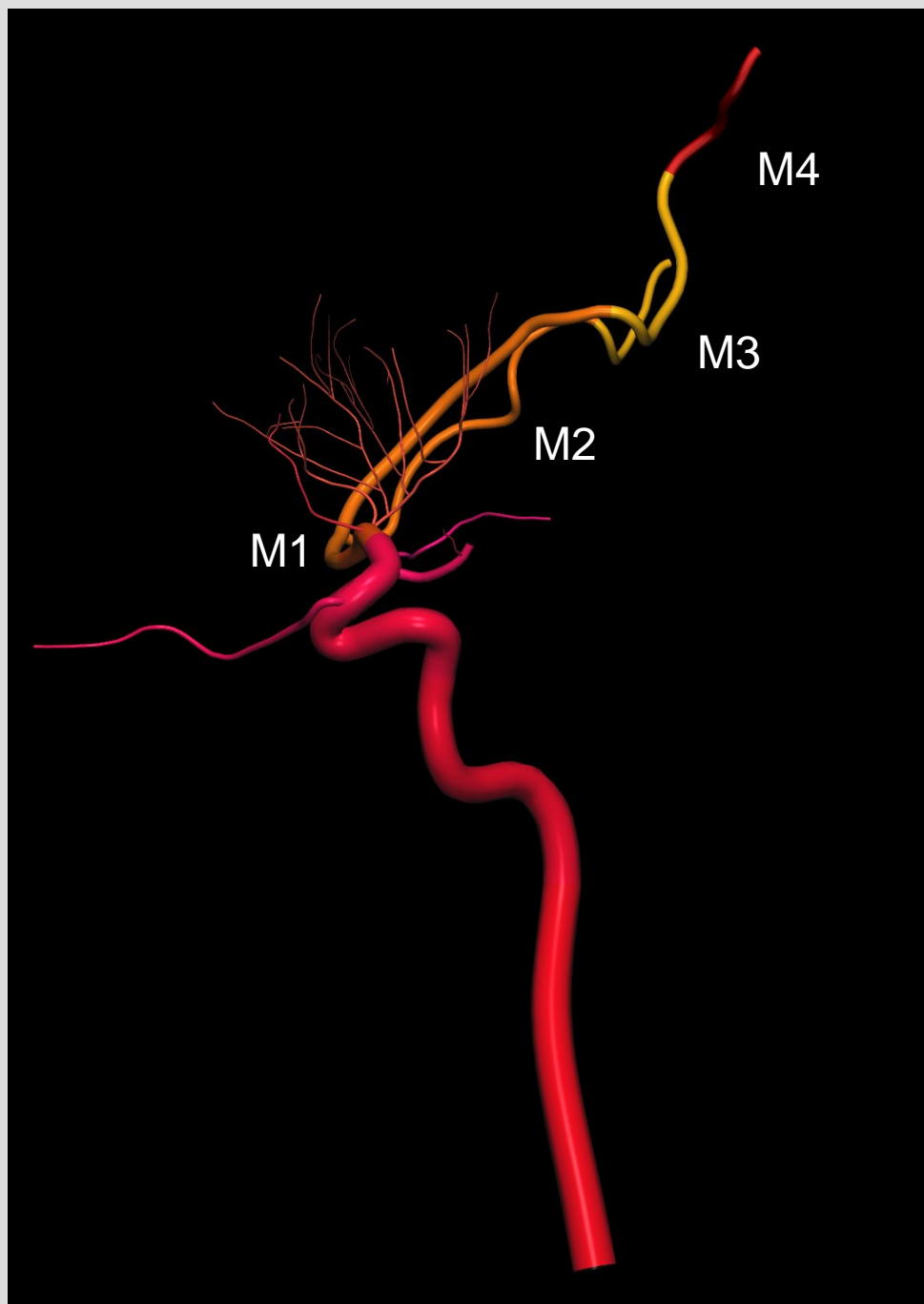
Artères lenticulo-striées
*latérales – intermédiaires -
médiales*

Artère temporale antérieure

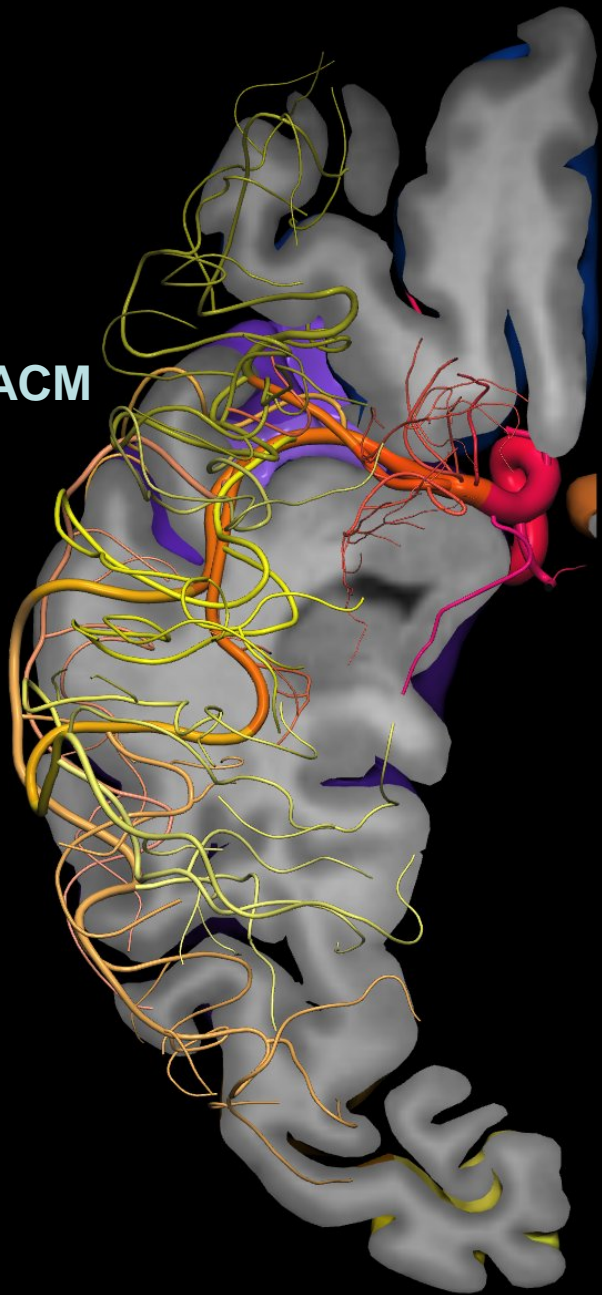
AChA
AcoP
Artère ophtalmique



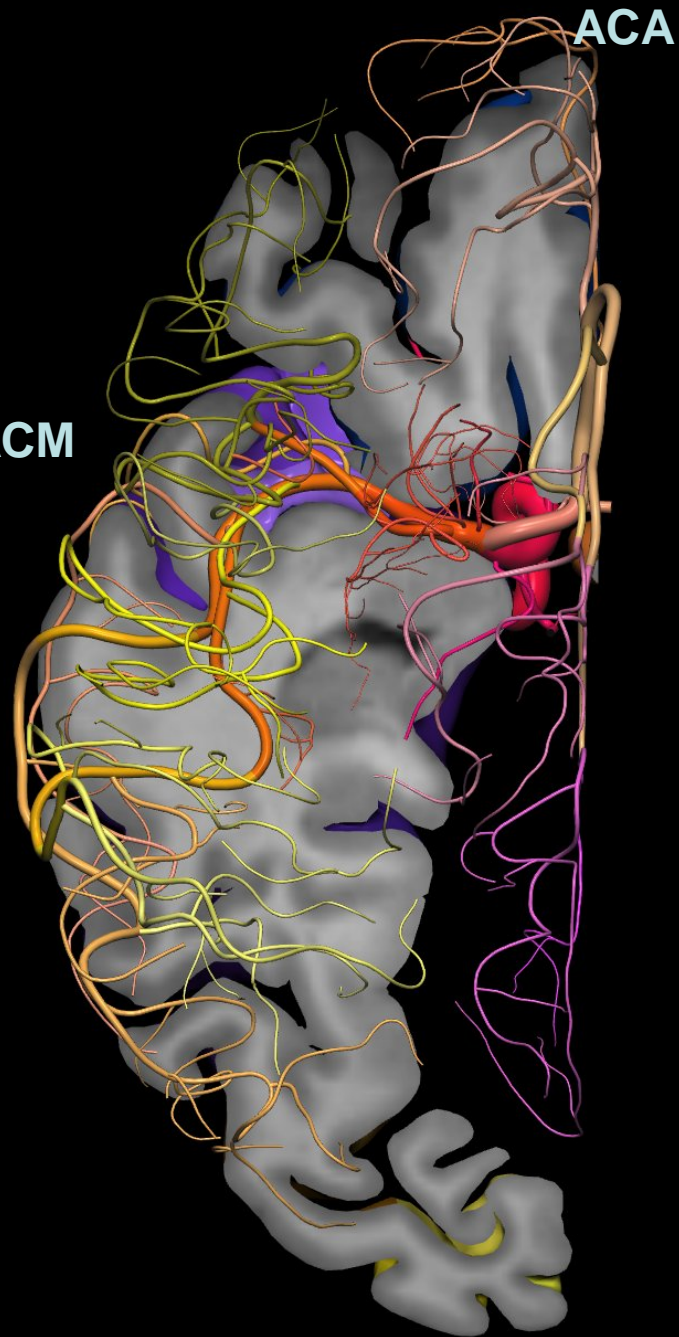




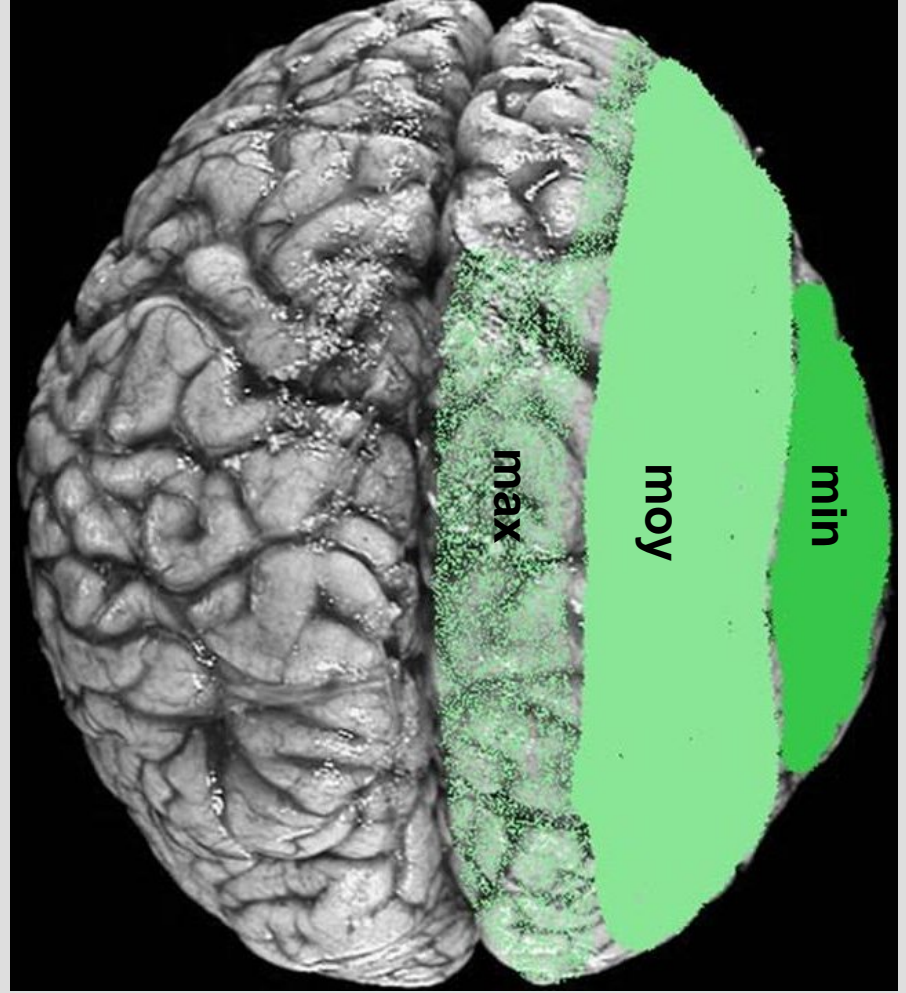
ACM

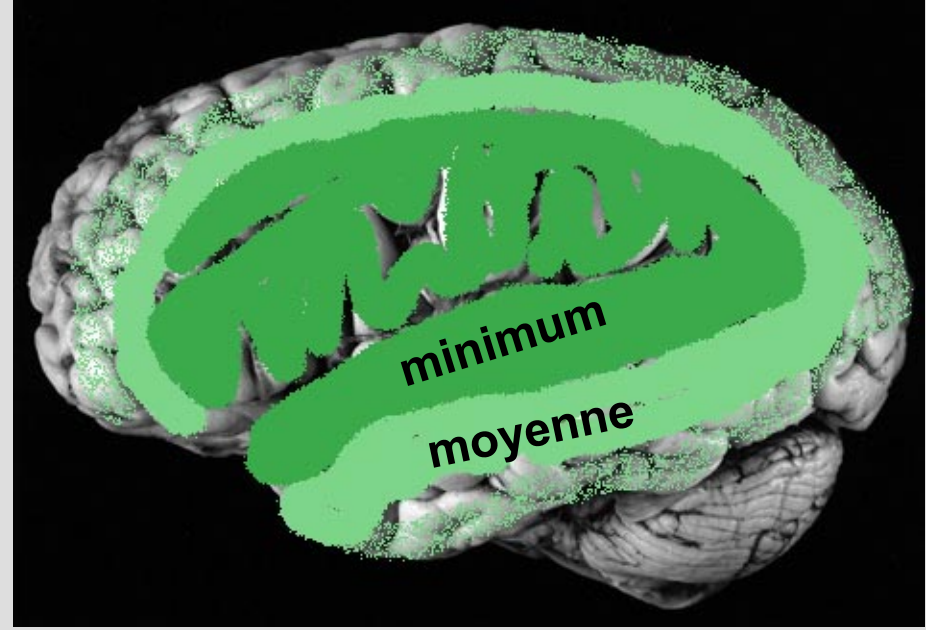
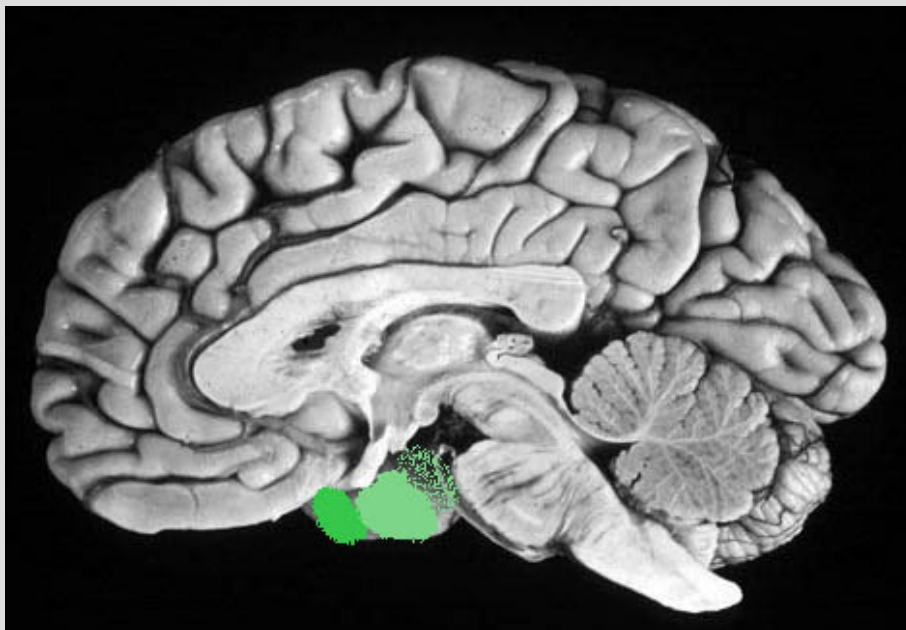
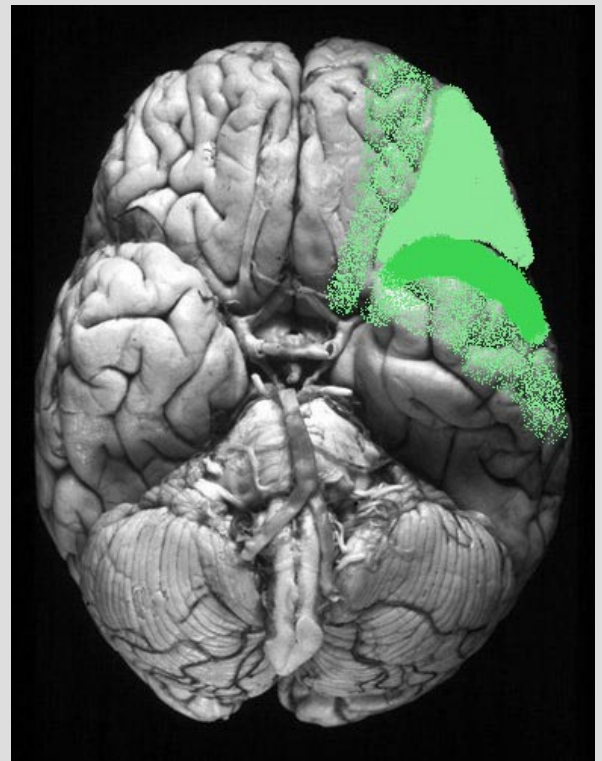
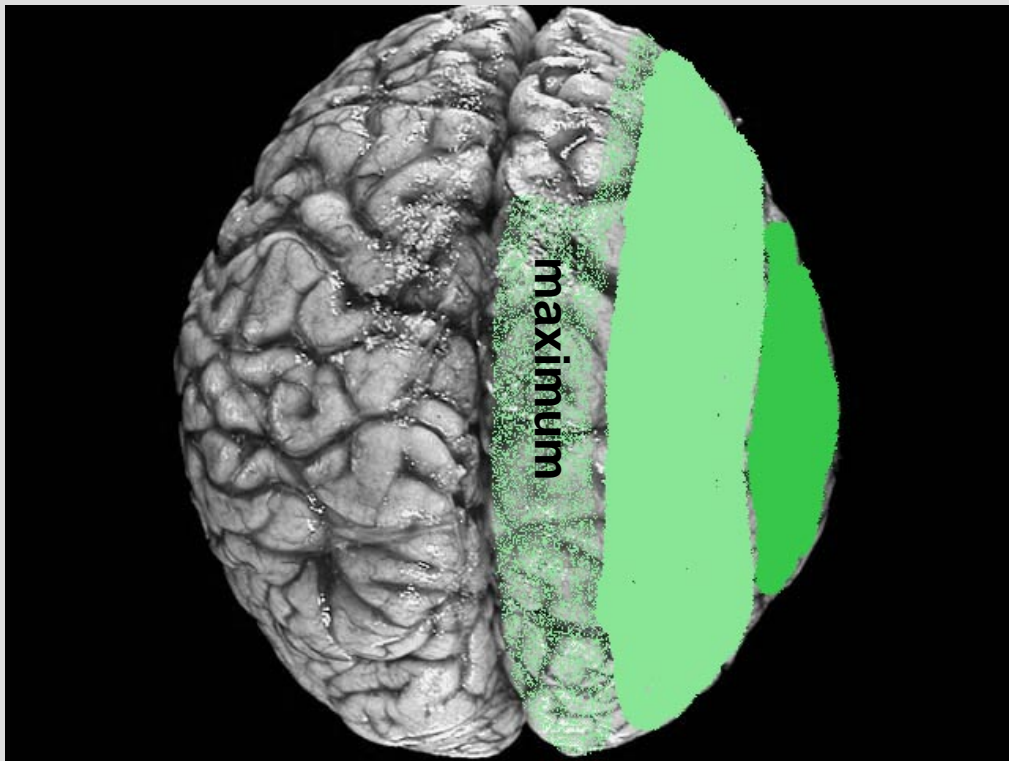


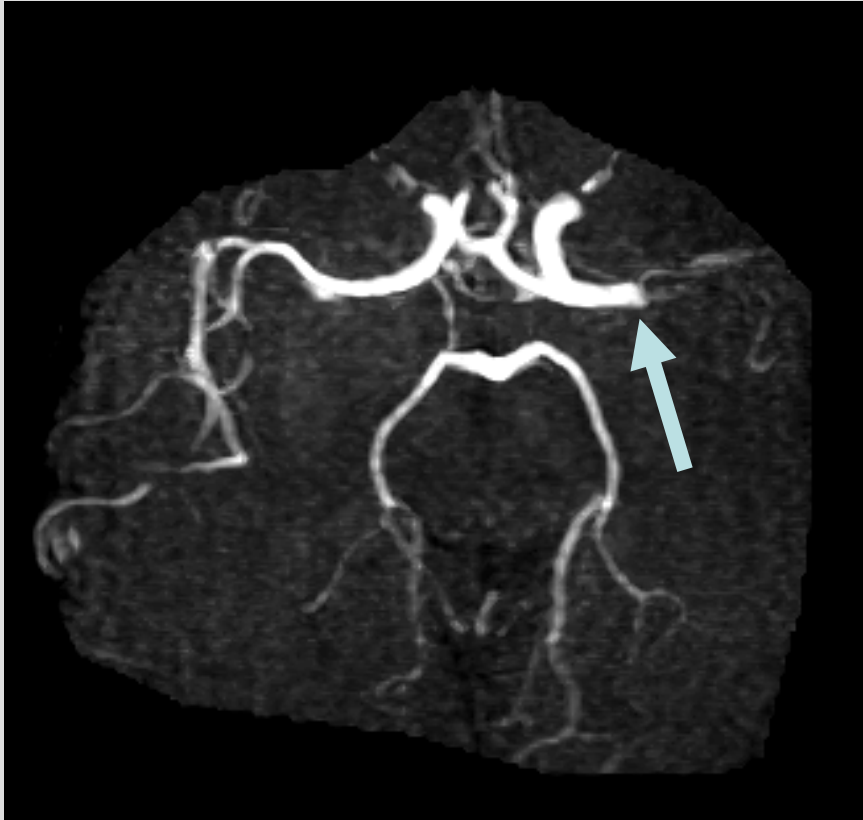
ACM



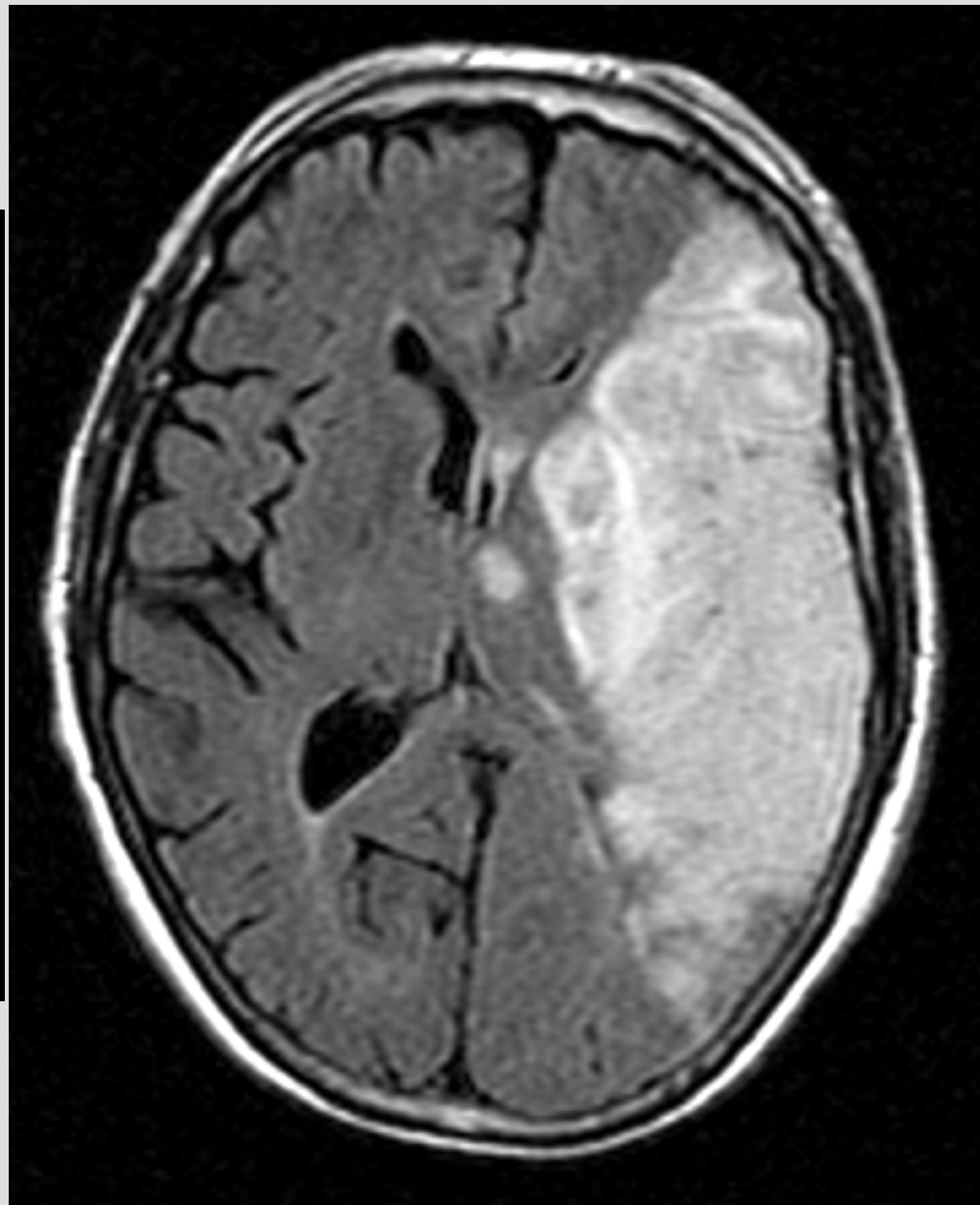
ACA





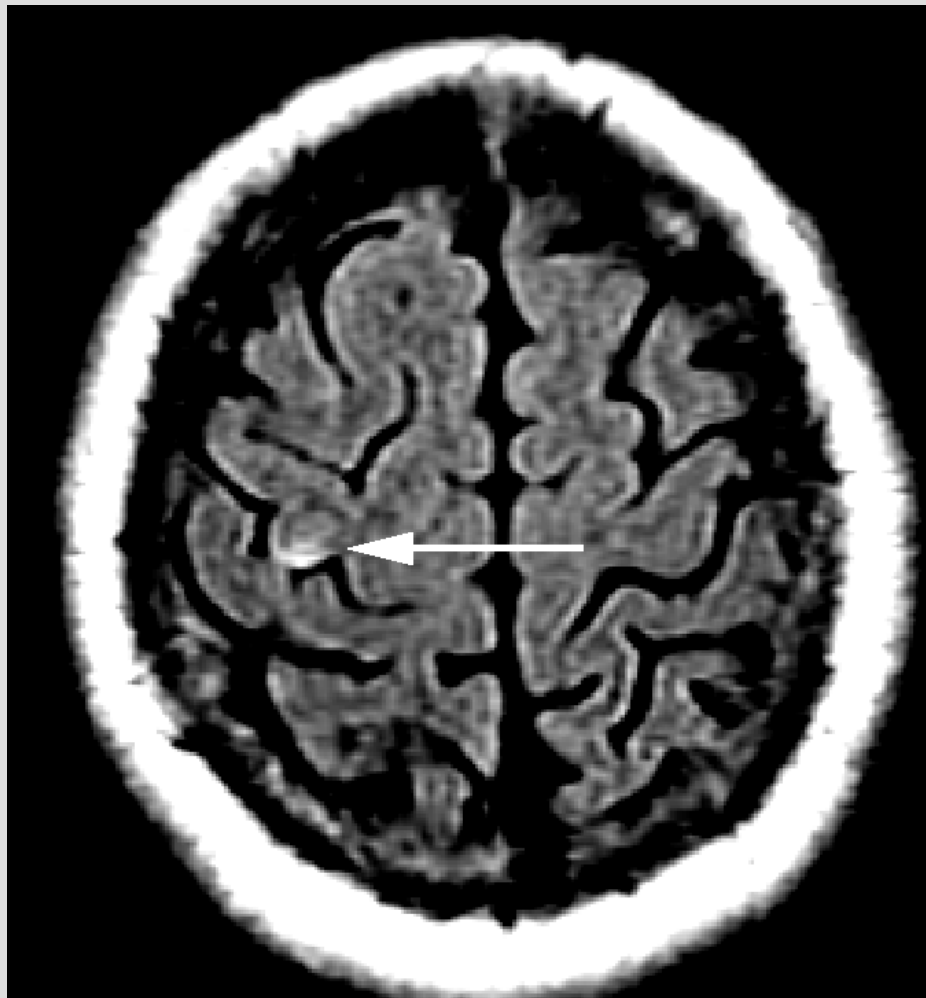


**AVC ischémique sylvien
superficiel + profond**

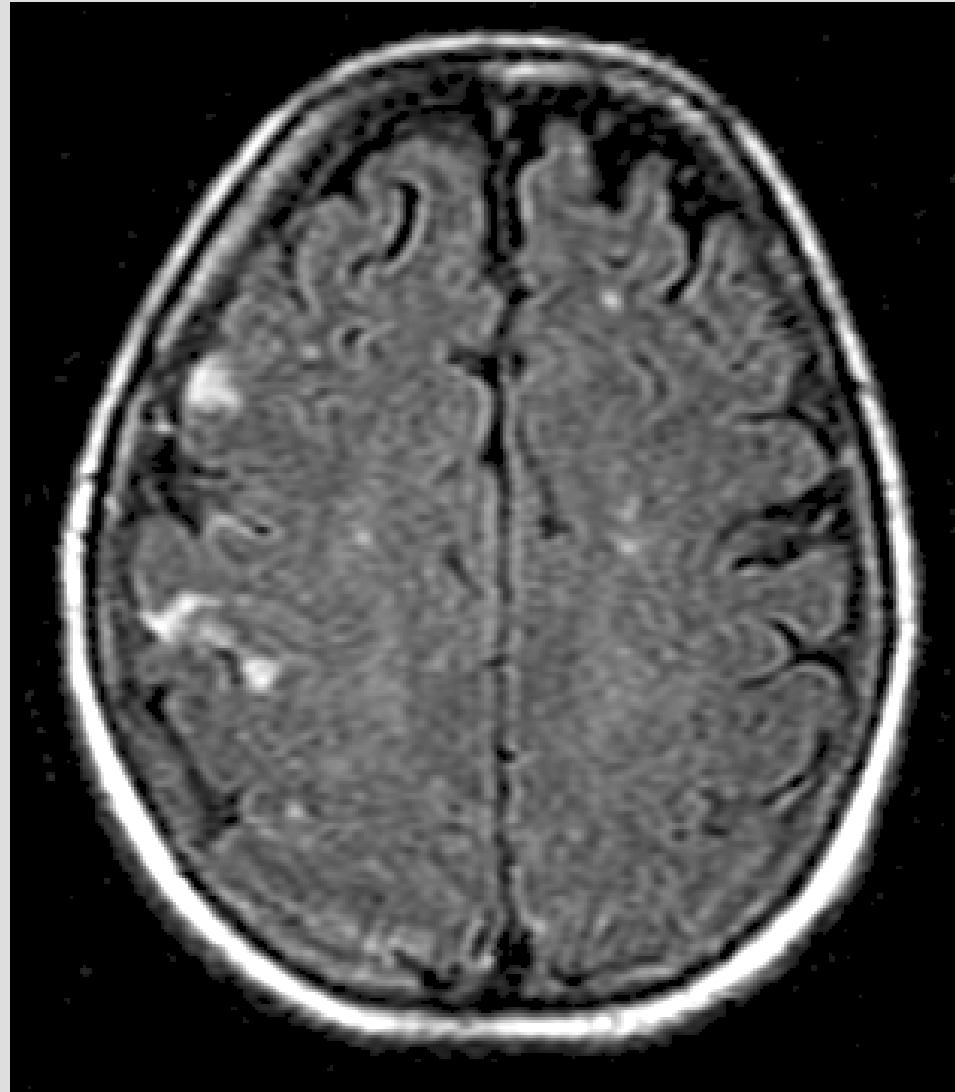


= AVC 'systematisé'

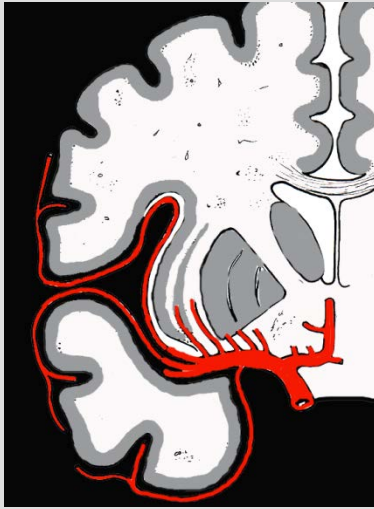
'hand-notch'



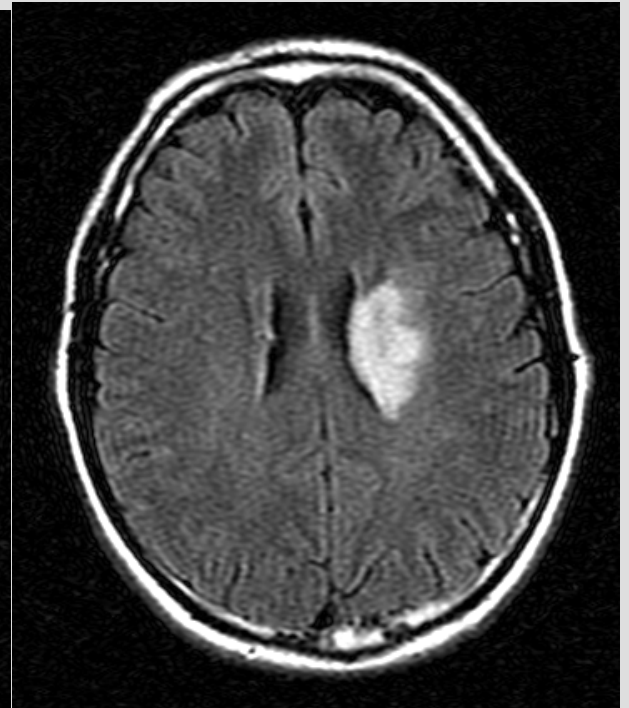
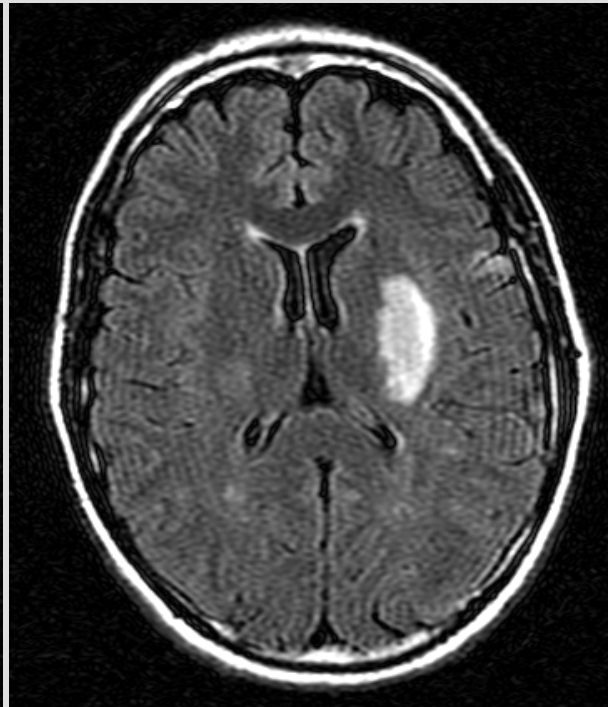
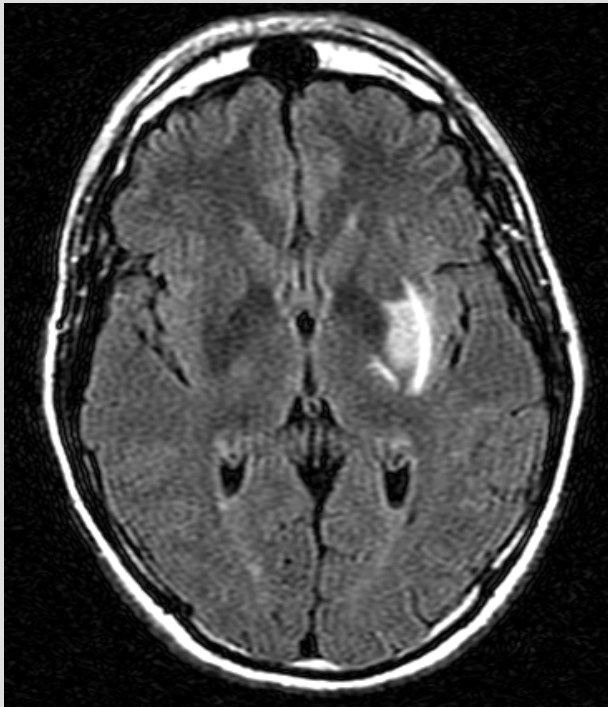
**AVC ischémo-embolique
sylvien superficiel**



= AVC focal en distalité

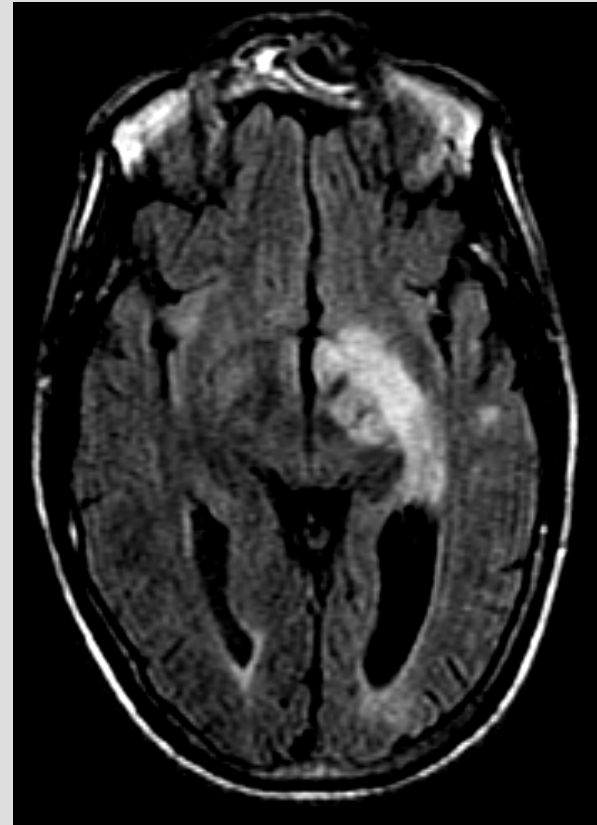
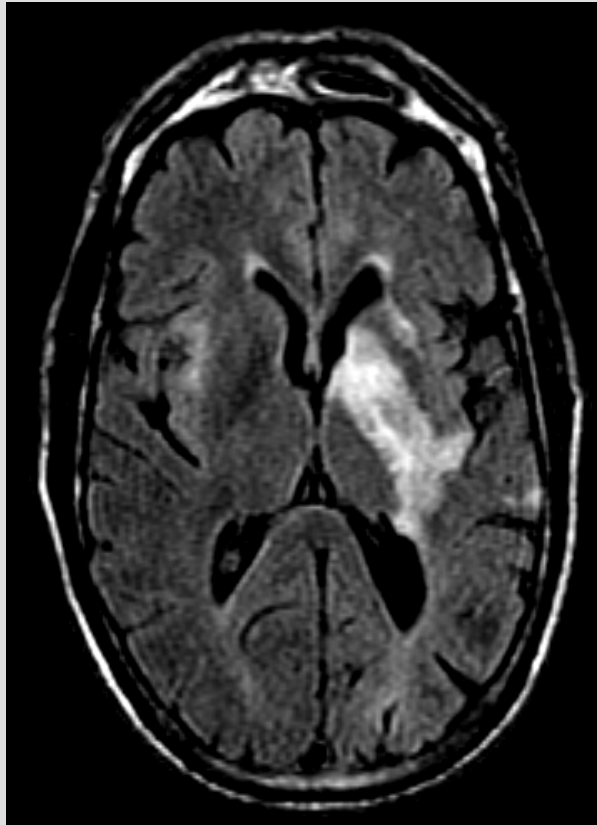


**Territoire
lenticulo-strié**





**Territoire
Choroïdien
Antérieur
(AChA)**

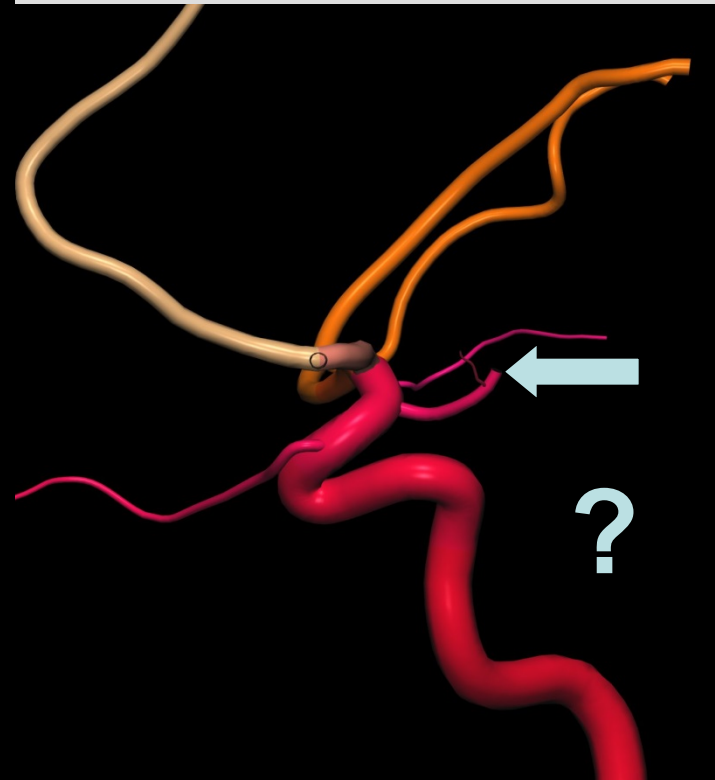




'T' carotidien interne



**Arborescence
artérielle
latérale**

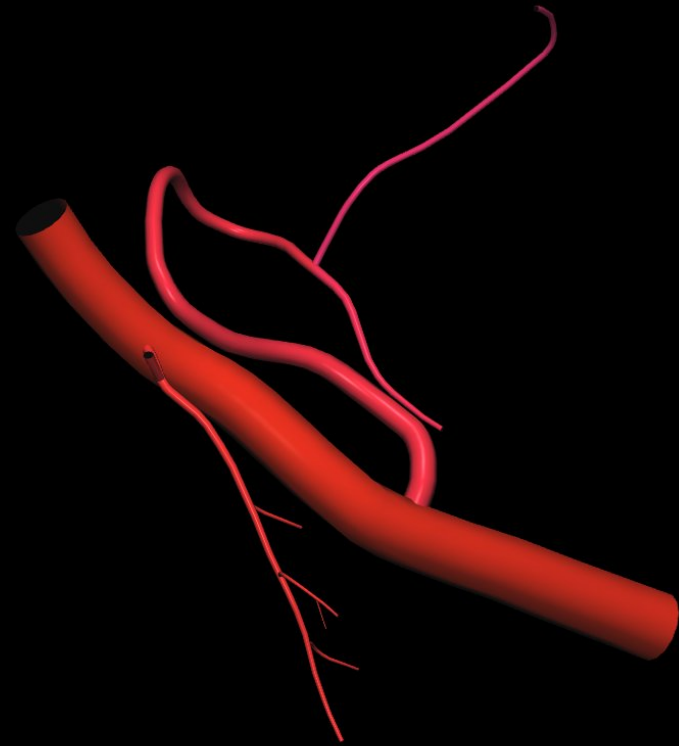
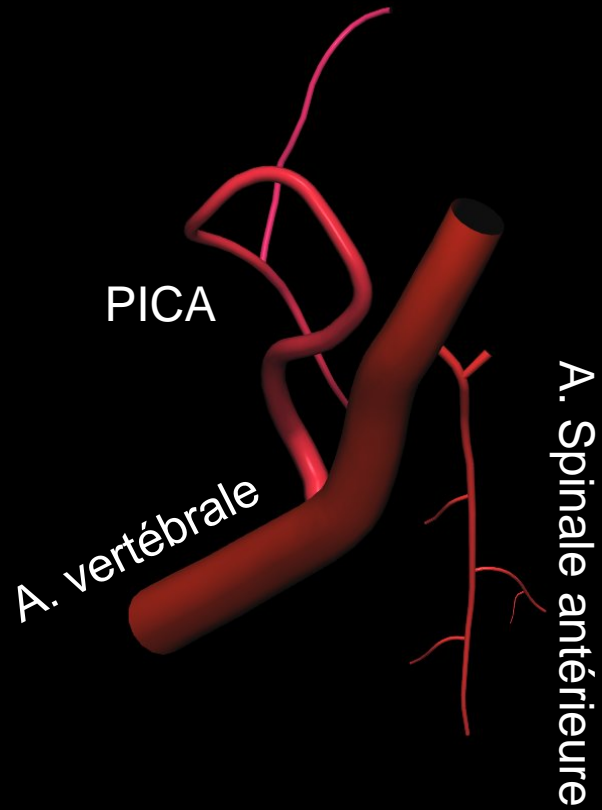


ACP

Artère Cérébrale Postérieure

Vue antérieure

Vue de profil



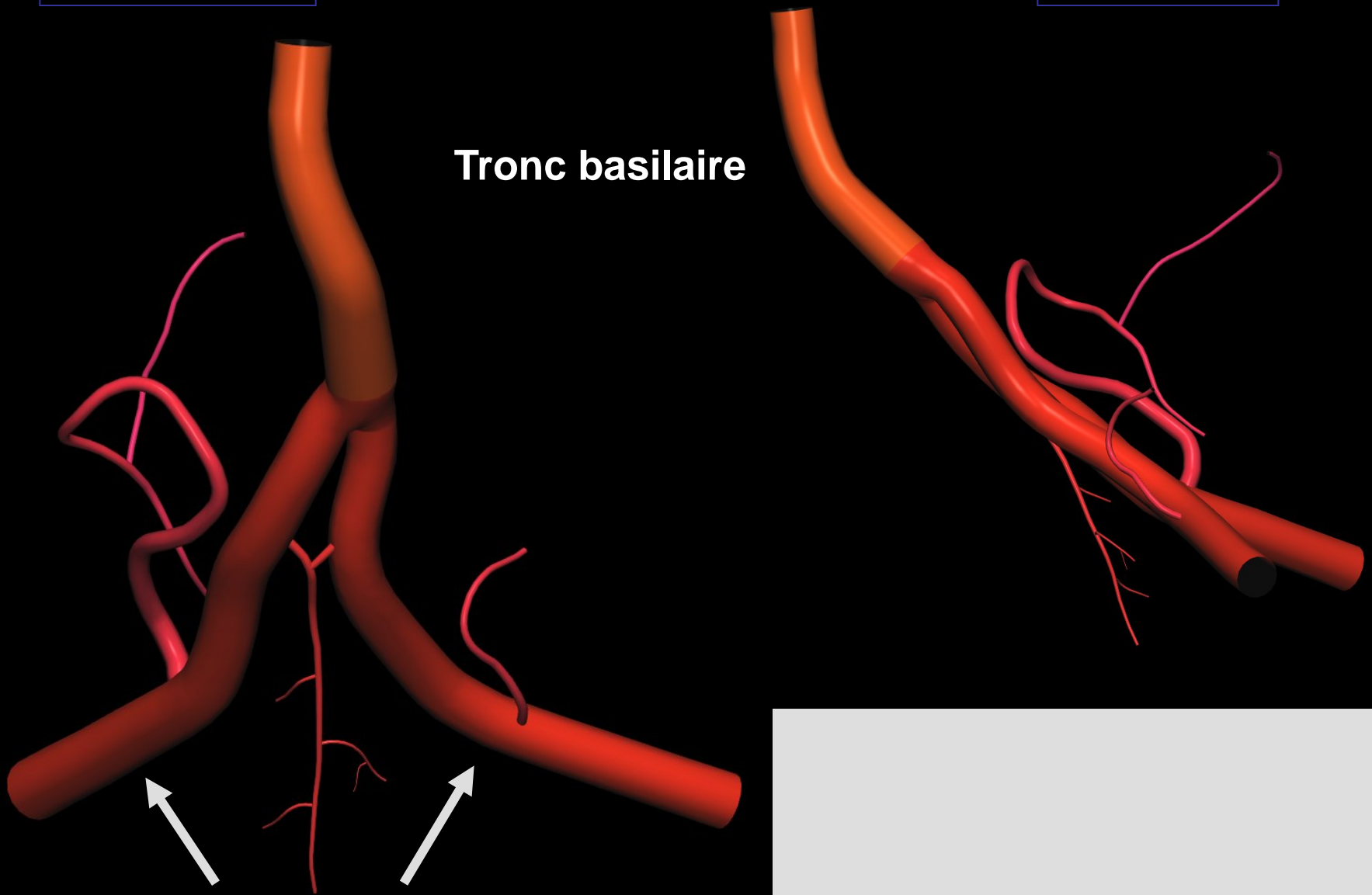
PICA = Postero-Inferior Cerebellar Artery (*artère cérébelleuse inférieure*)

Vue antérieure

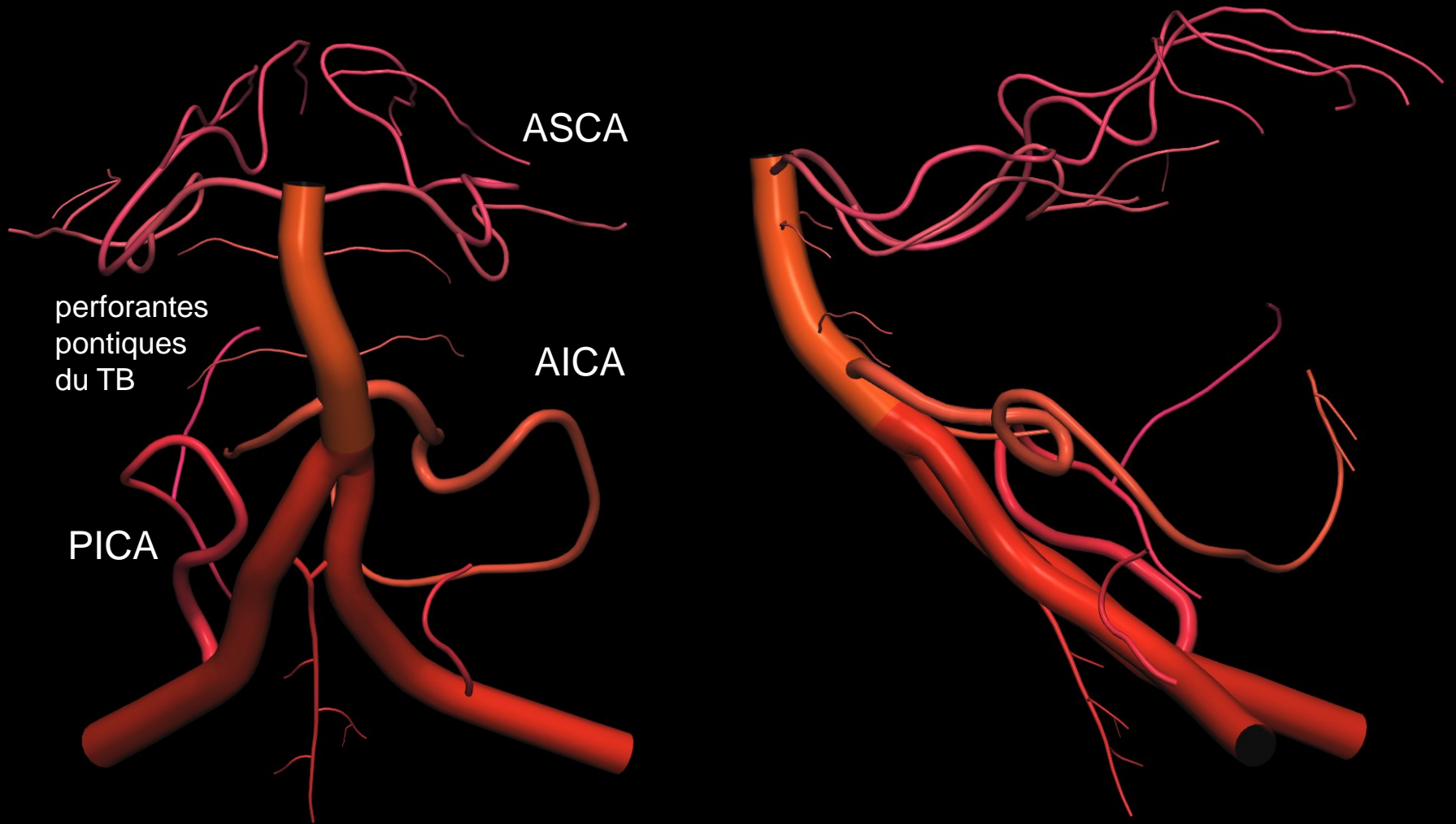
Vue de profil

Tronc basilaire

Artères vertébrales



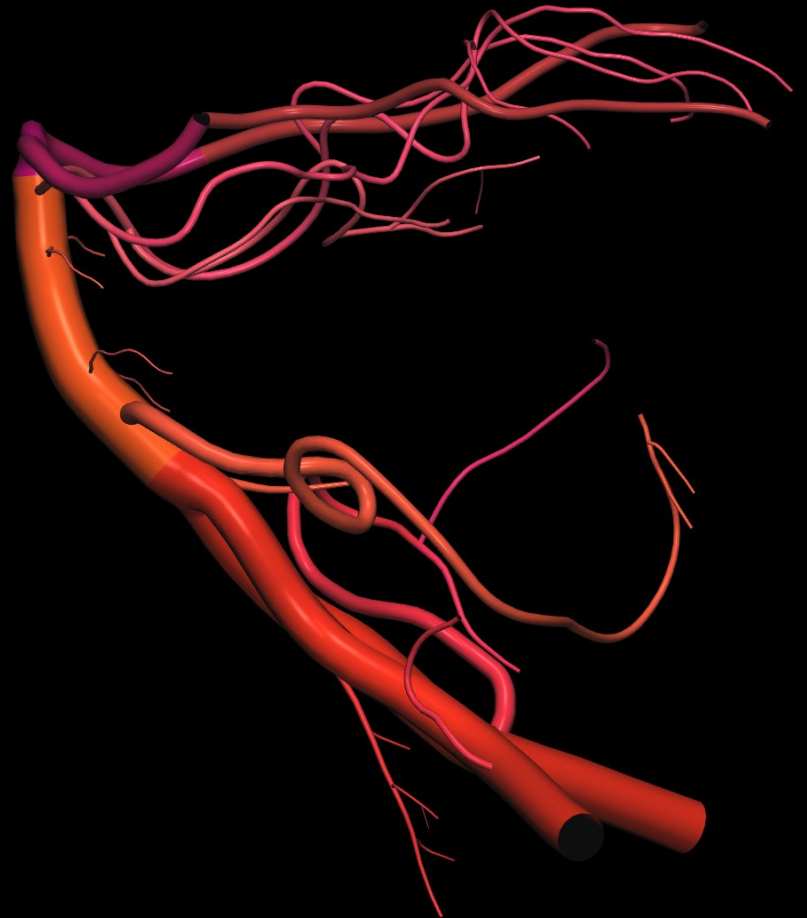
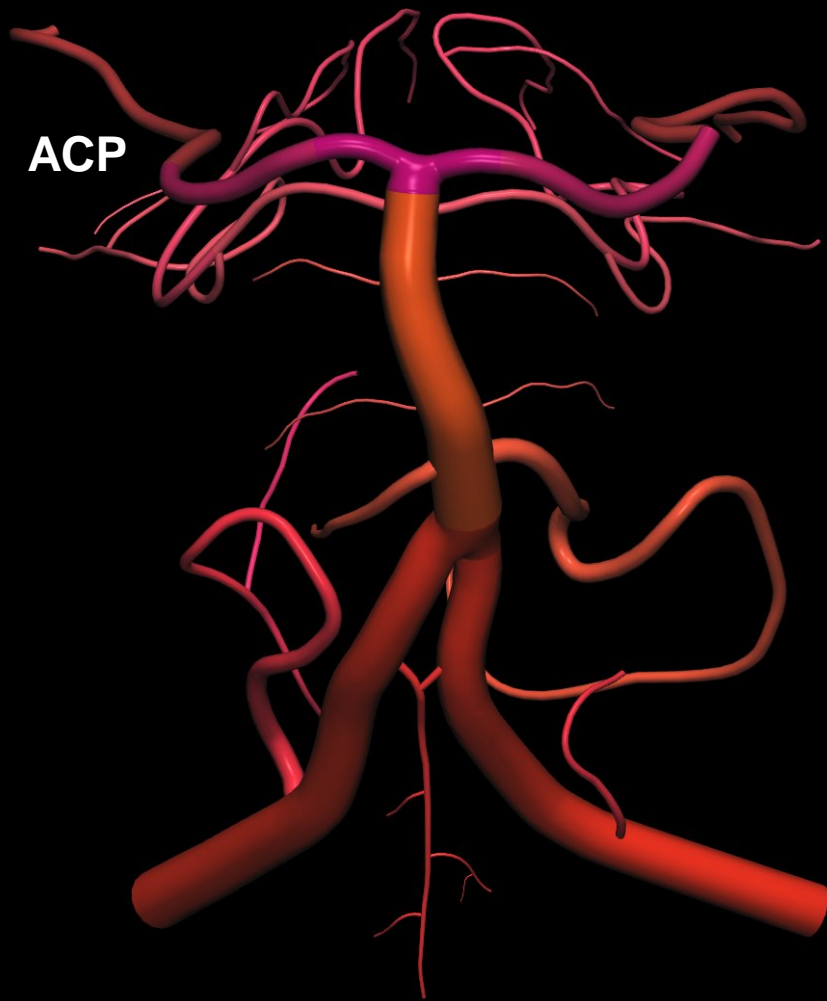
ASCA = Antero-Superior Cerebellar Artery (*artère cérébelleuse supérieure*)

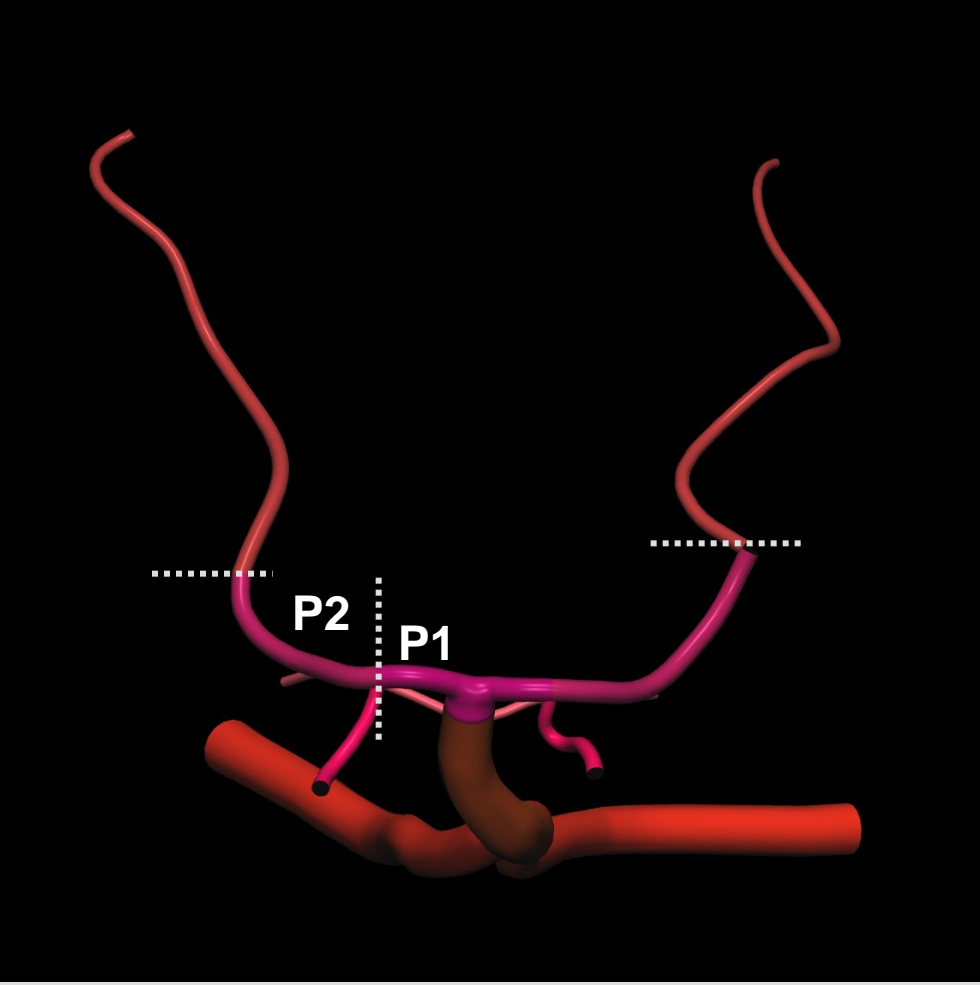
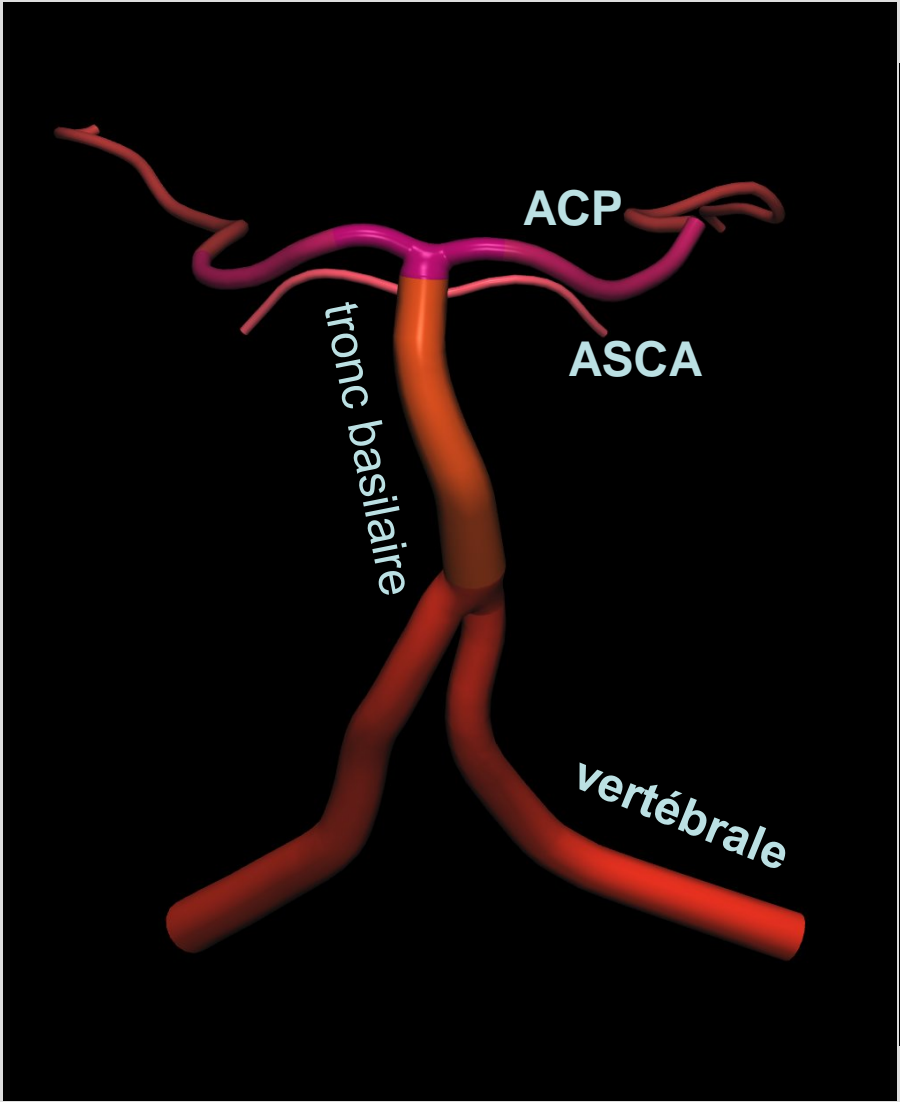


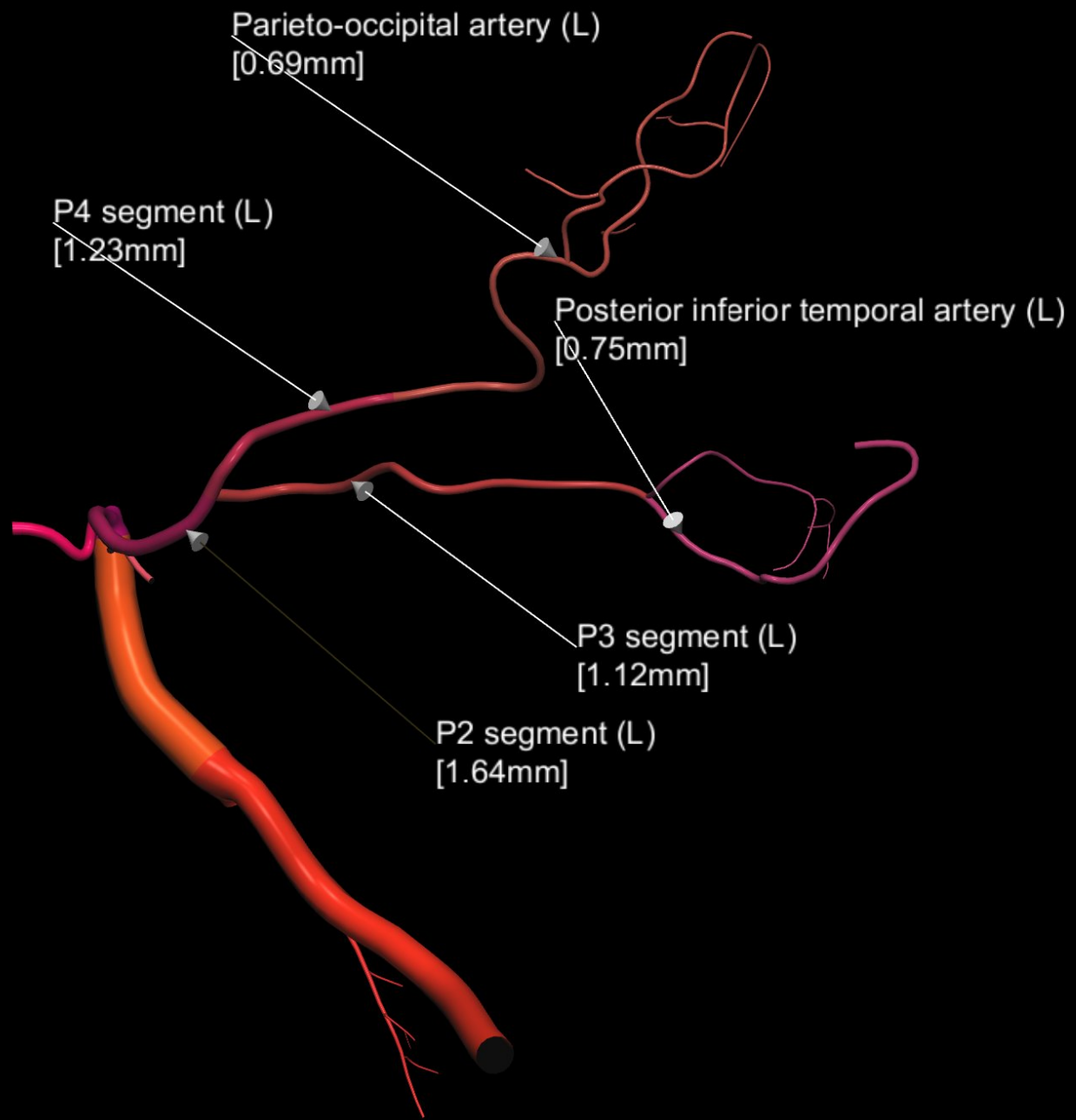
AICA = Antero-Inferior Cerebellar Artery (*artère cérébelleuse moyenne*)

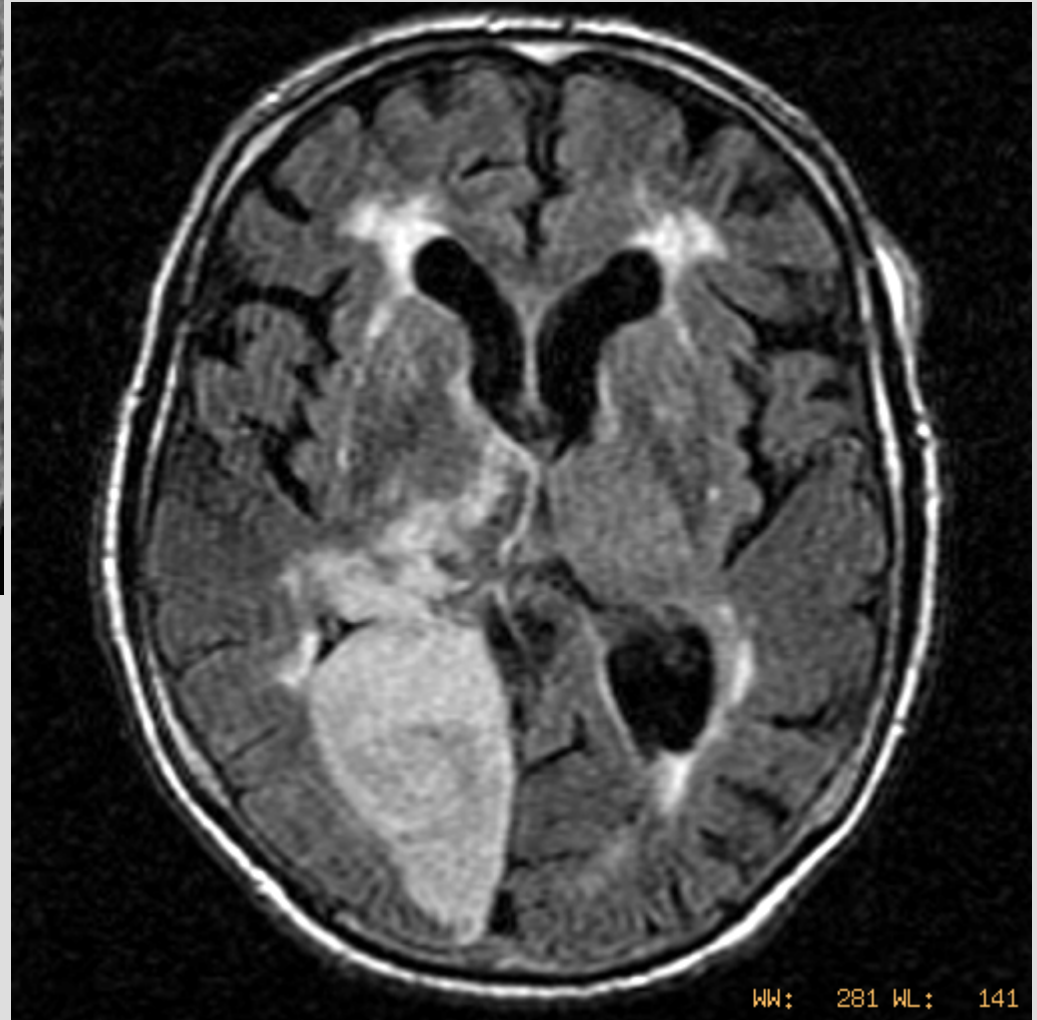
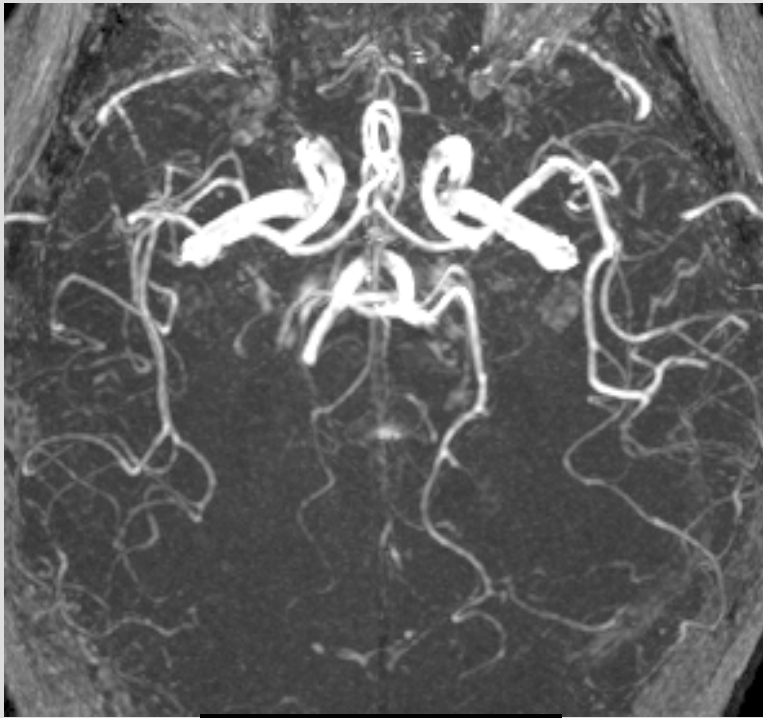
Sommet du tronc basilaire

ACP



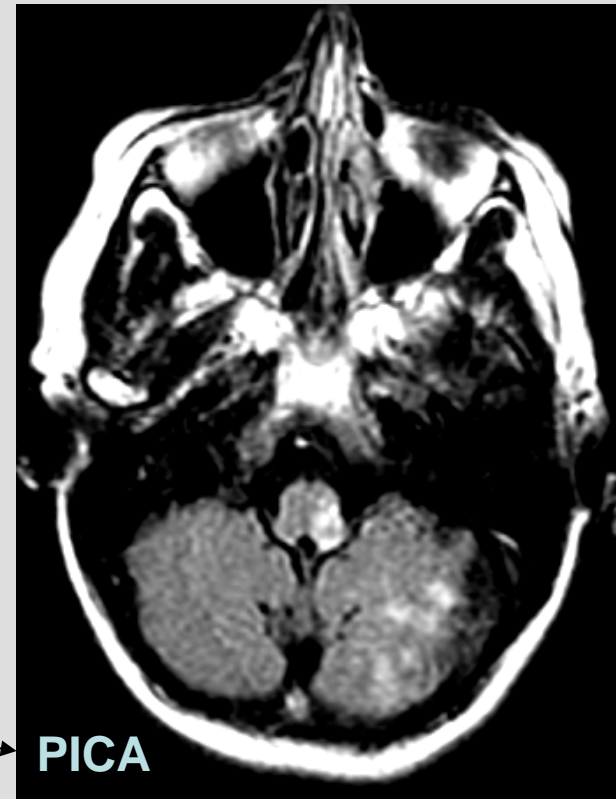
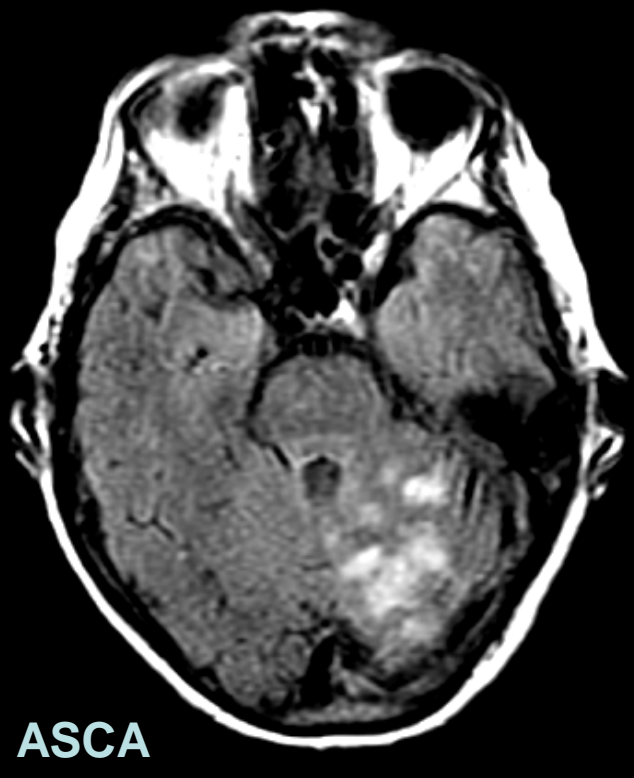




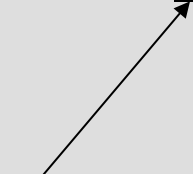
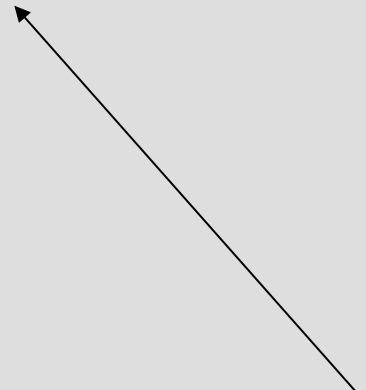


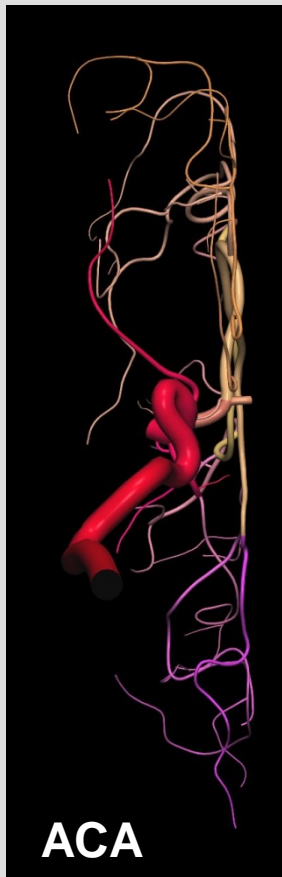
AVC ischémique aigu ACP

AVC ischémique aigu



territorialité





Polygone artériel de la base du crâne

