

# Cours à Option de Neuroradiologie

RDGN 2120

2019-2020

## Tumeurs cérébrales

Année académique 2019-2020



**Dr Thierry Duprez**

*Professeur clinique (UCL)*

*Chef de Clinique (UCL-St-Luc)*

<http://www.uclimaging.be>

<http://www.saintluc.be>

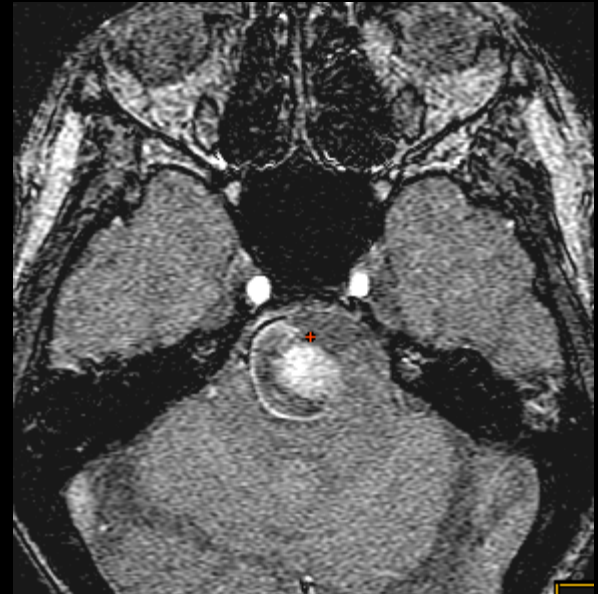
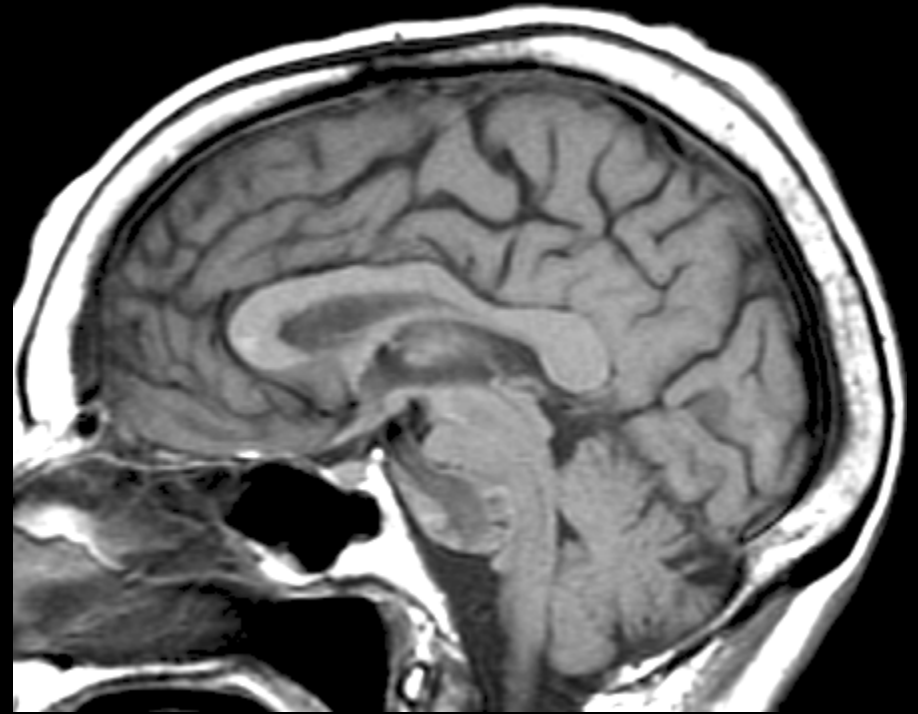
<http://www.centreducancer.be>

Septième cours 31 octobre 2019

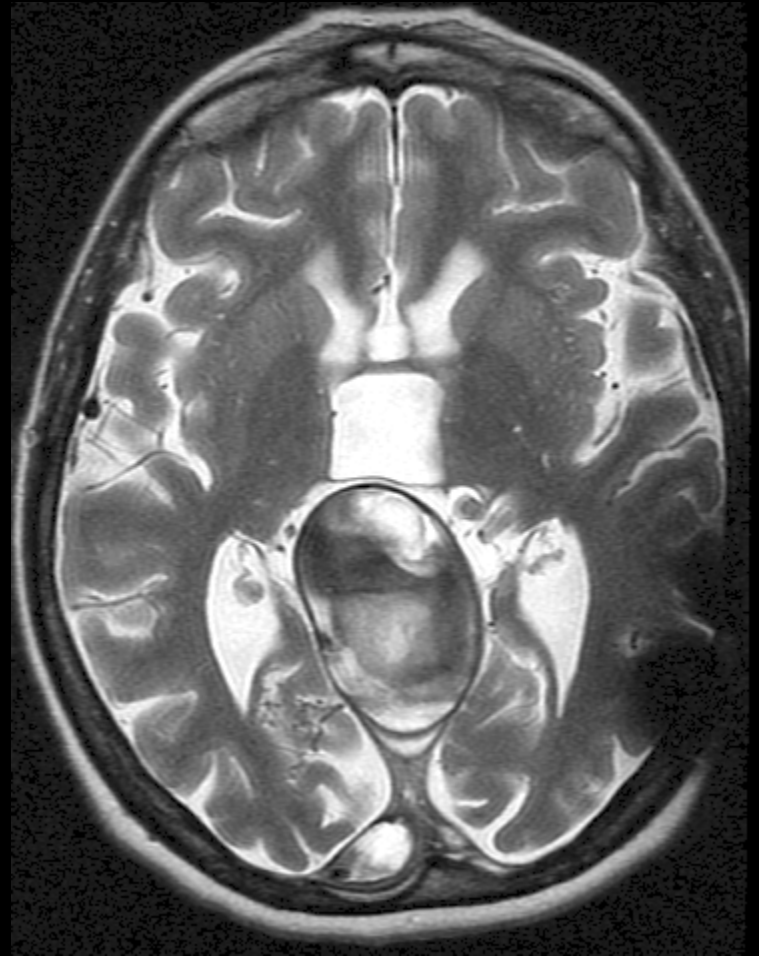


-une masse n'est pas toujours une tumeur

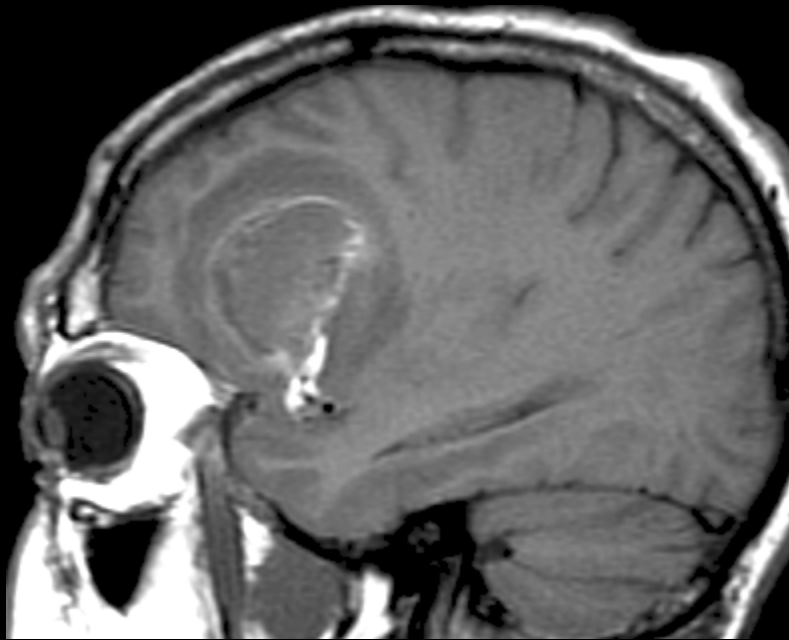
-une tumeur n'est pas toujours une masse



**Anévrysme artériel**

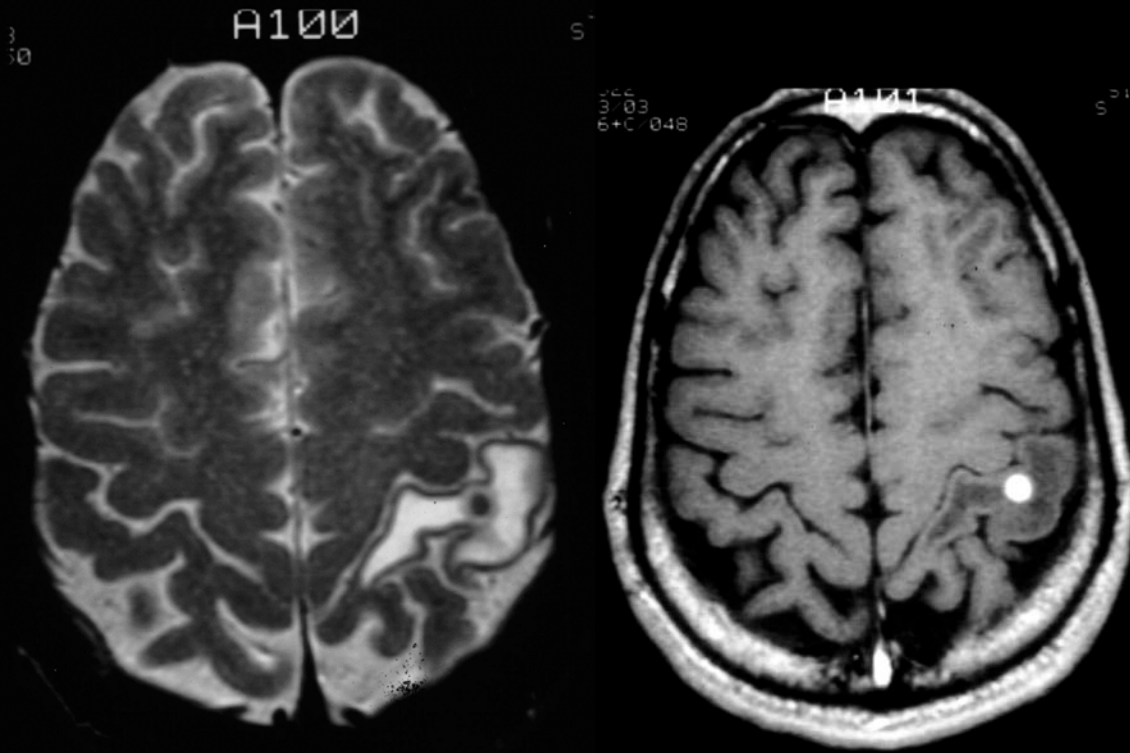


**Anévrysme veineux**



**Hématome**

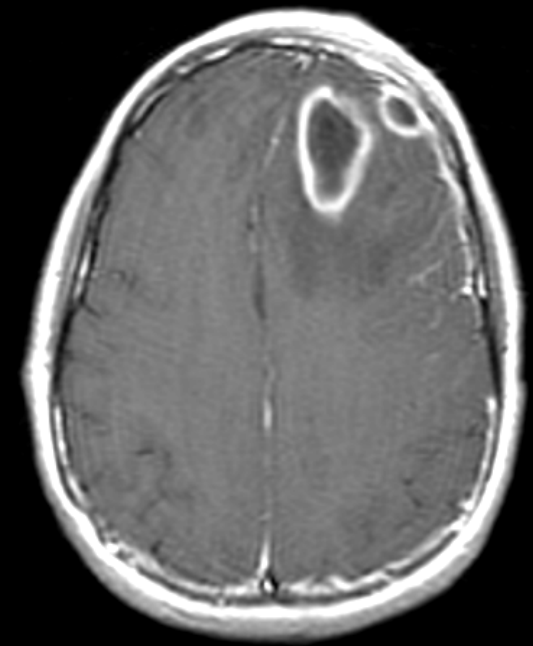
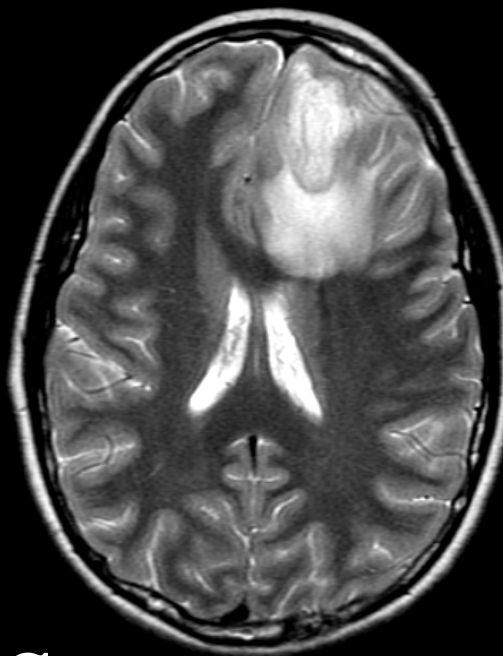
# Nodules et masses non tumoraux



Granulome toxoplasmique

## Infection

infection  
vs  
tumeur

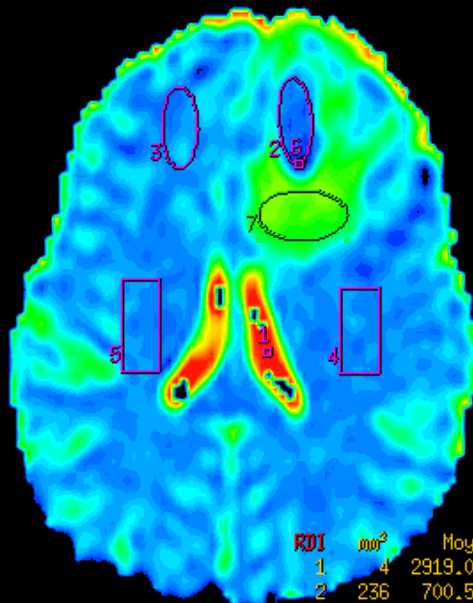
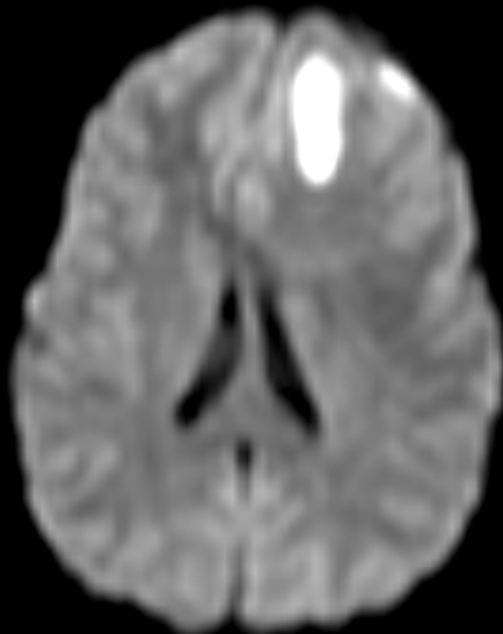


# Abcès

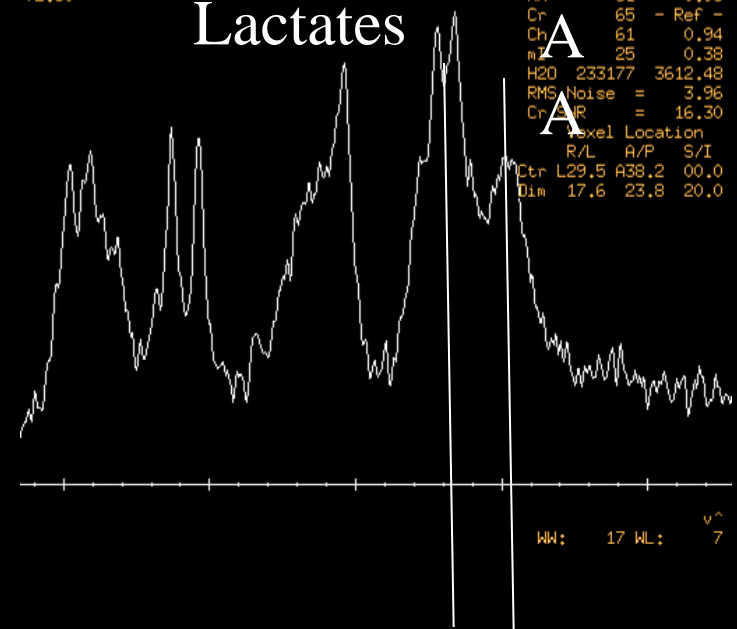
Wk: 348

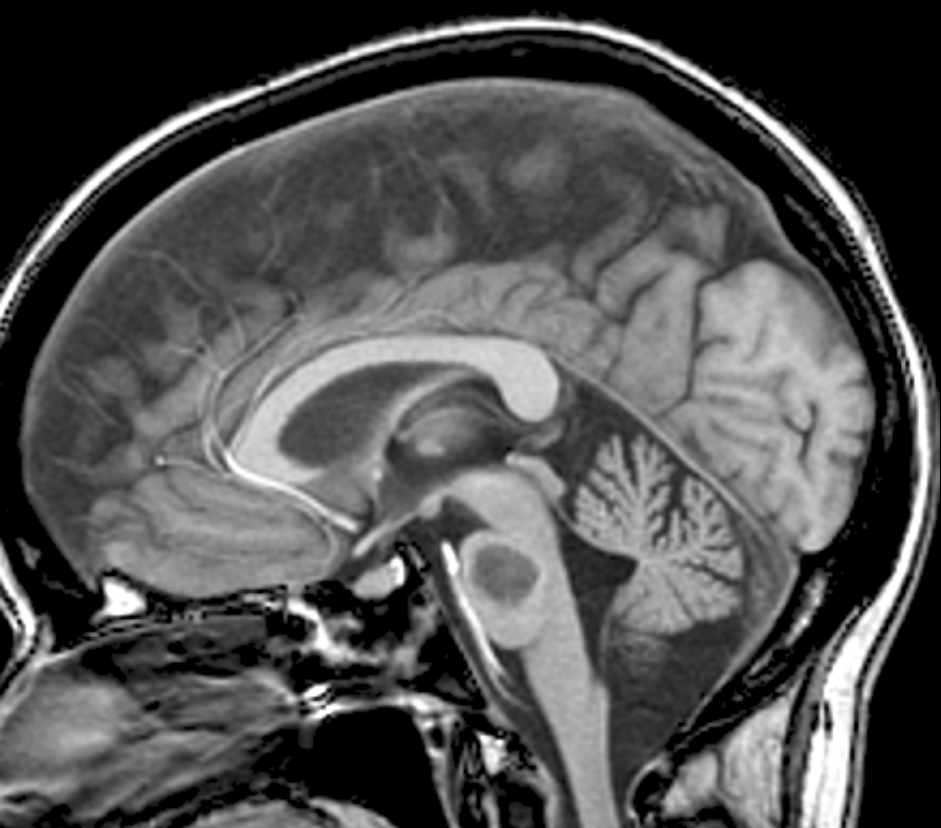
1 60 x 0 11

Wk: 642 Wk: 476  
TR:1900  
TE:30



# Lactates

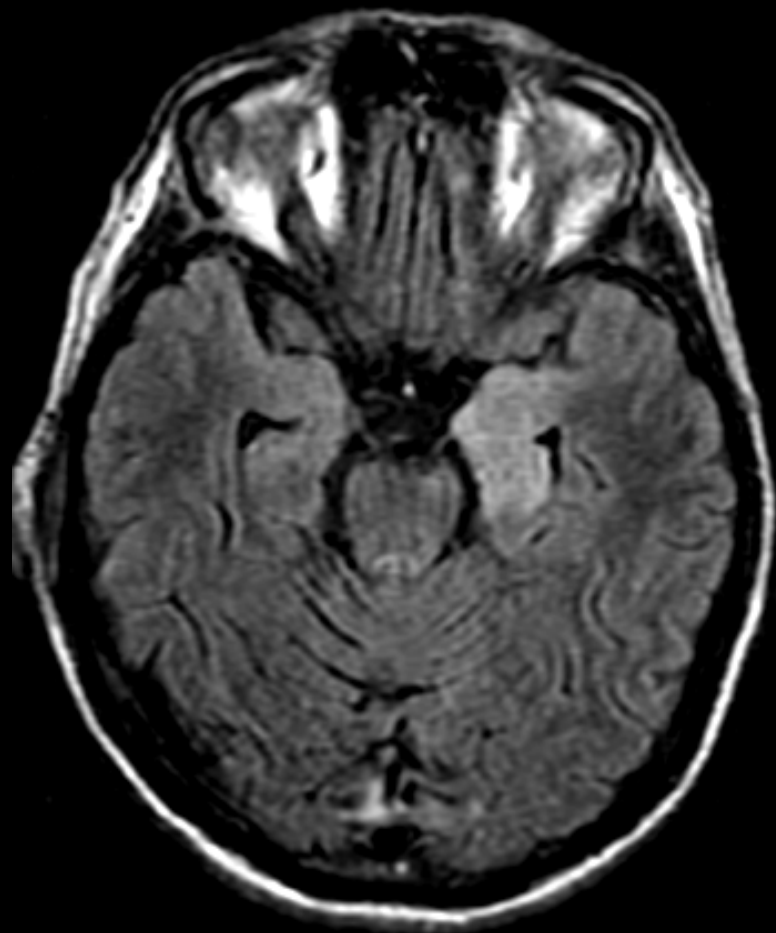




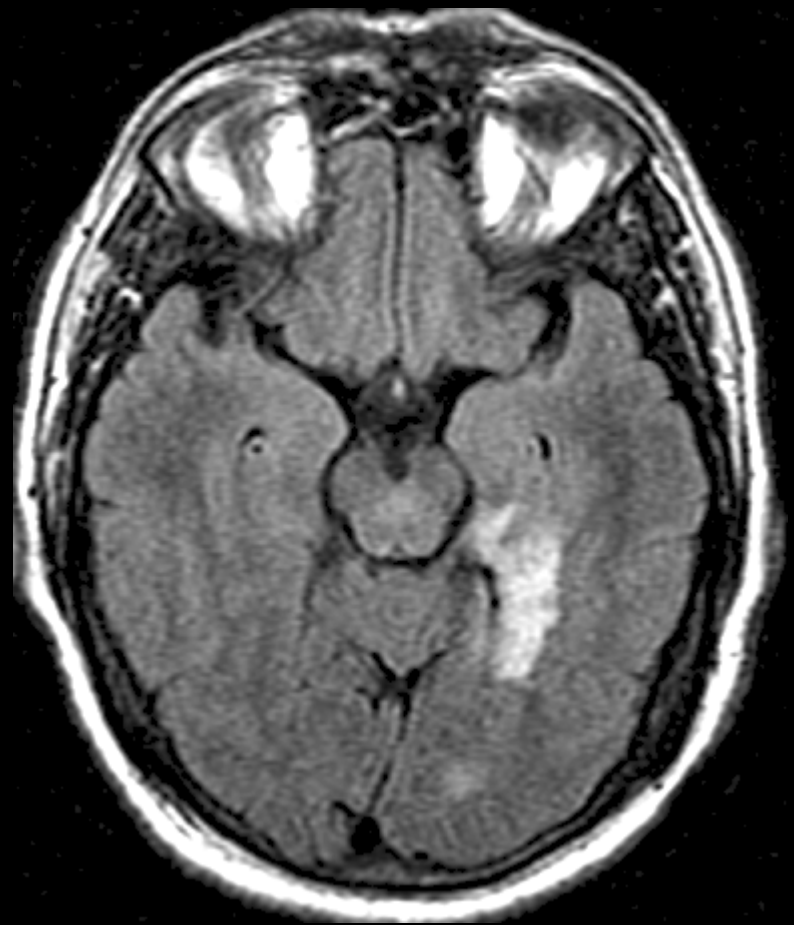
**SEP**



Encéphalite  
herpétique



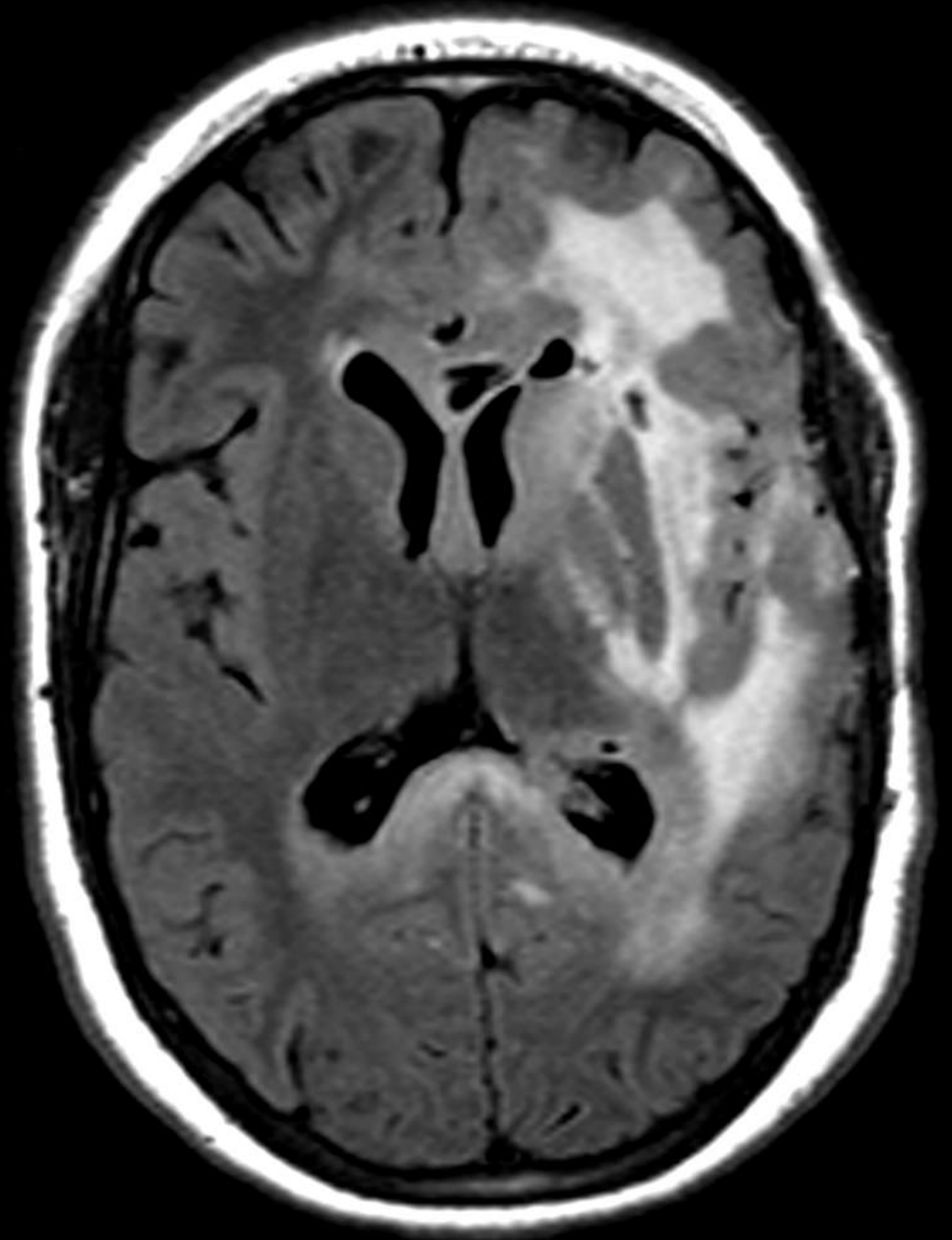
Astrocytome



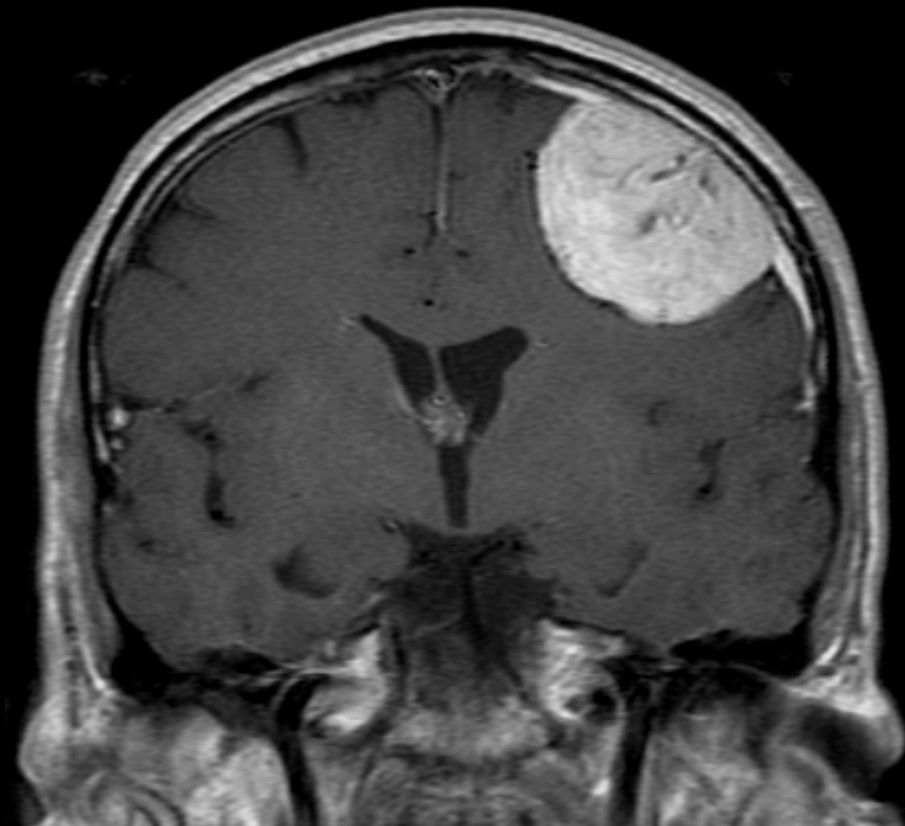
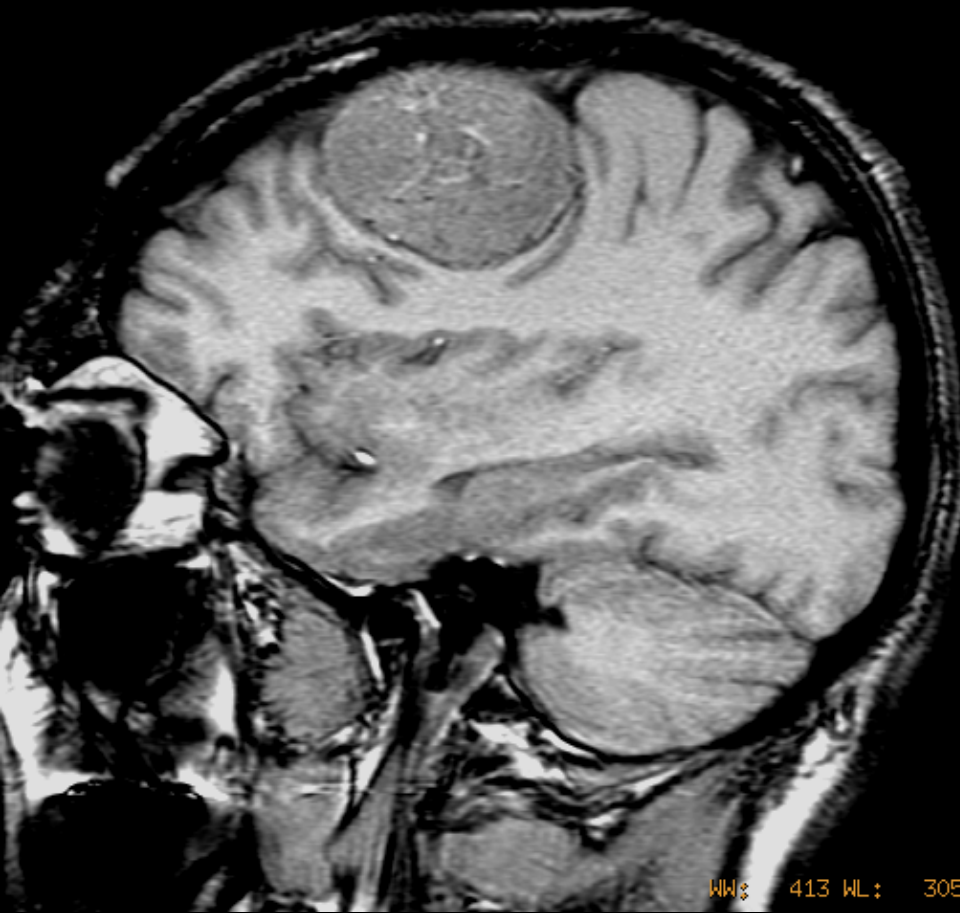
**Si une masse n'est pas toujours une tumeur...**

**une tumeur n'est pas toujours une masse**

# Gliomatose cérébrale



# Tumeurs extra-cérébrales



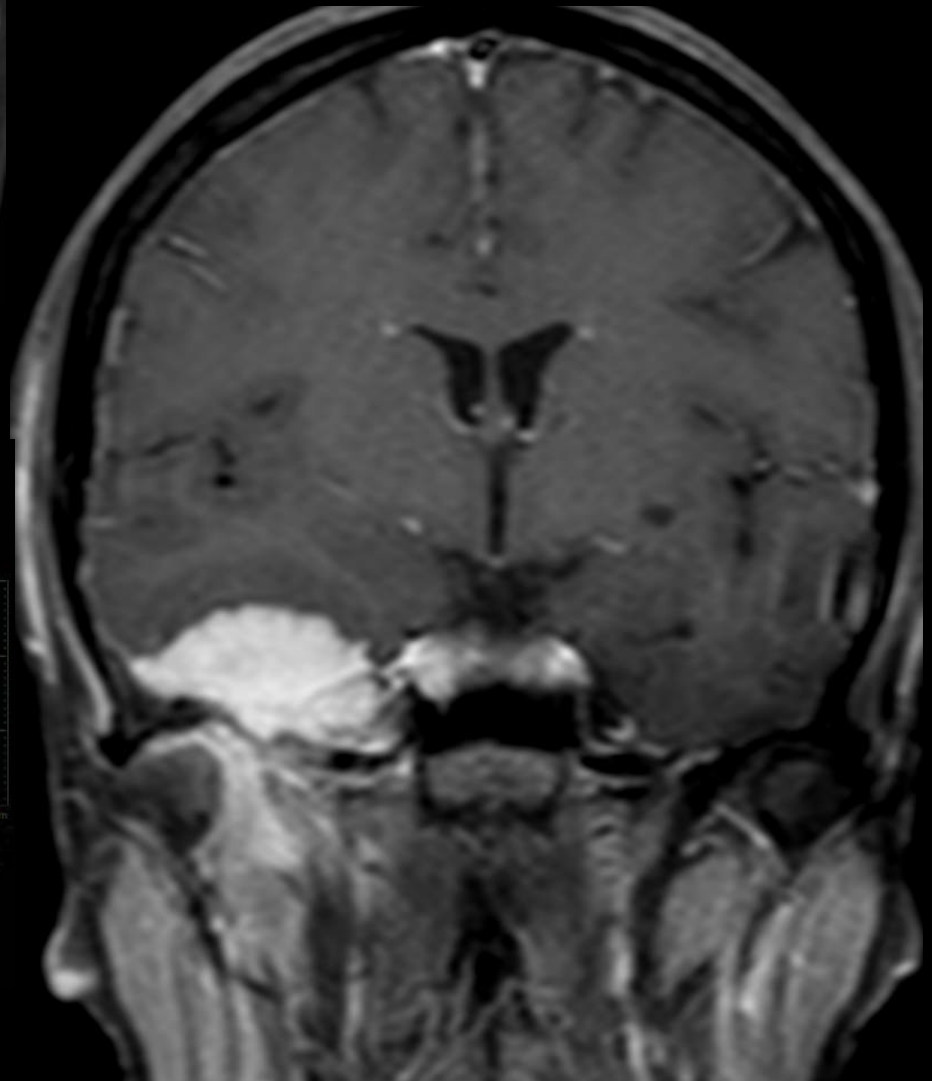
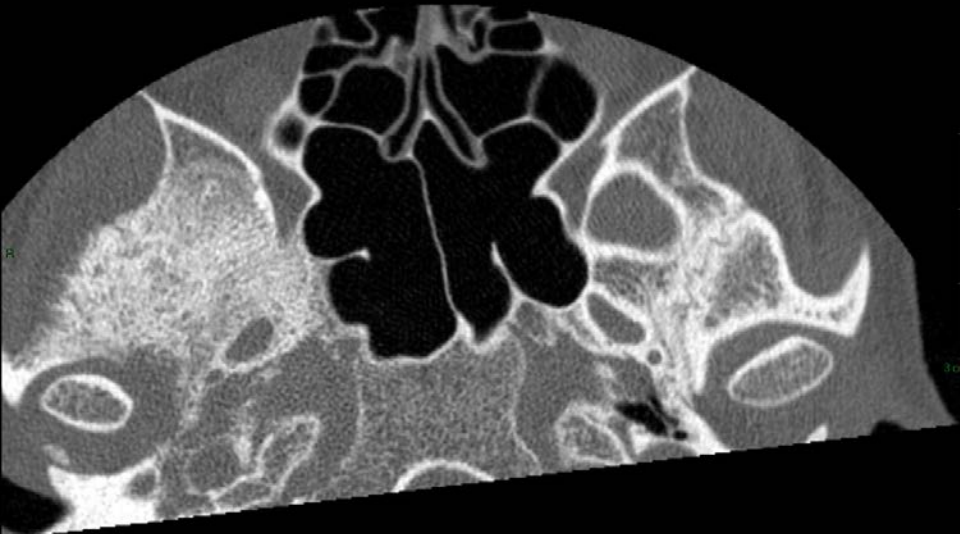
WW: 413 WL: 305

méningiome

**insertion méningée  
épaississement et hyperémie  
queue de comète**

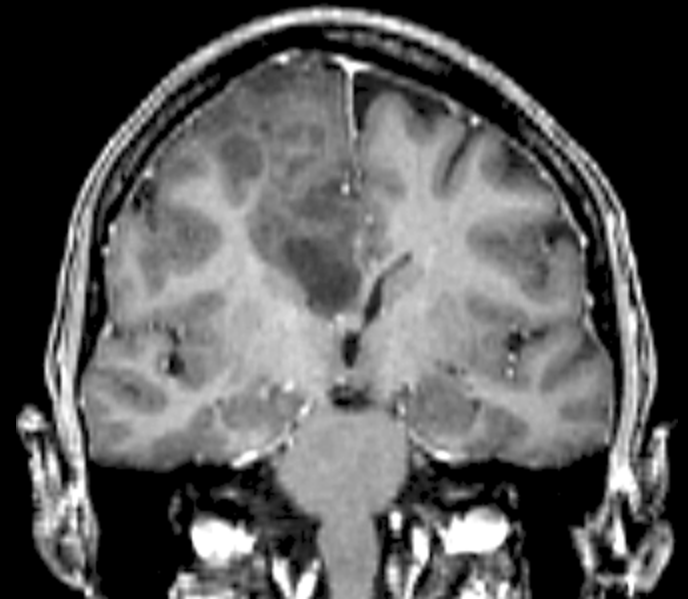
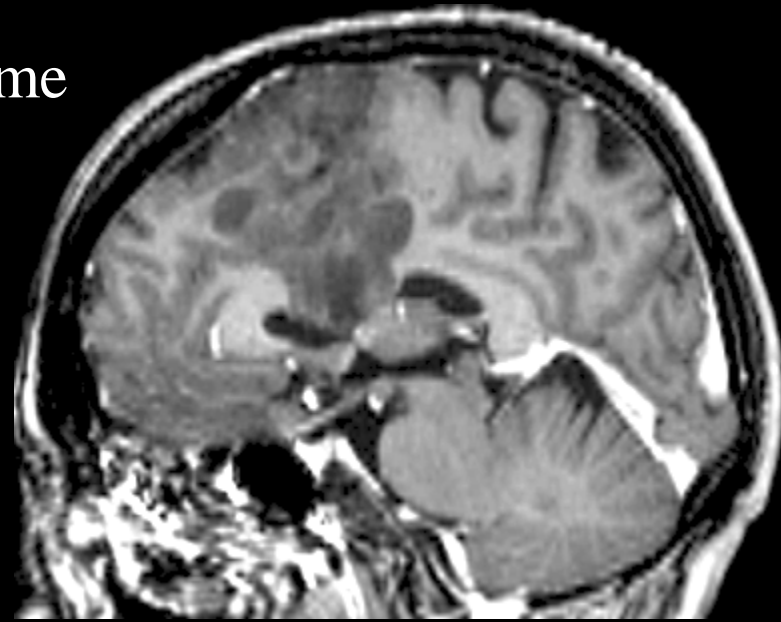
**Vaisseaux en interface**

**anomalies osseuses**  
**envahissement**  
**→ hyperostose**



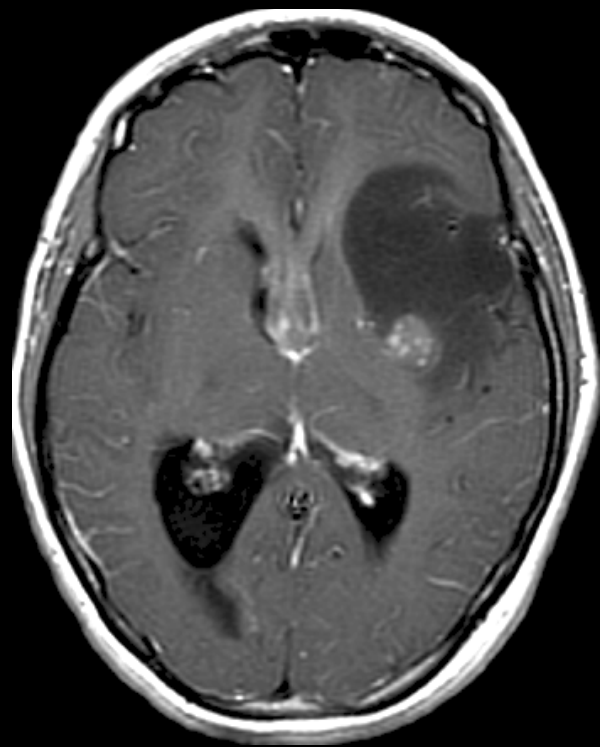
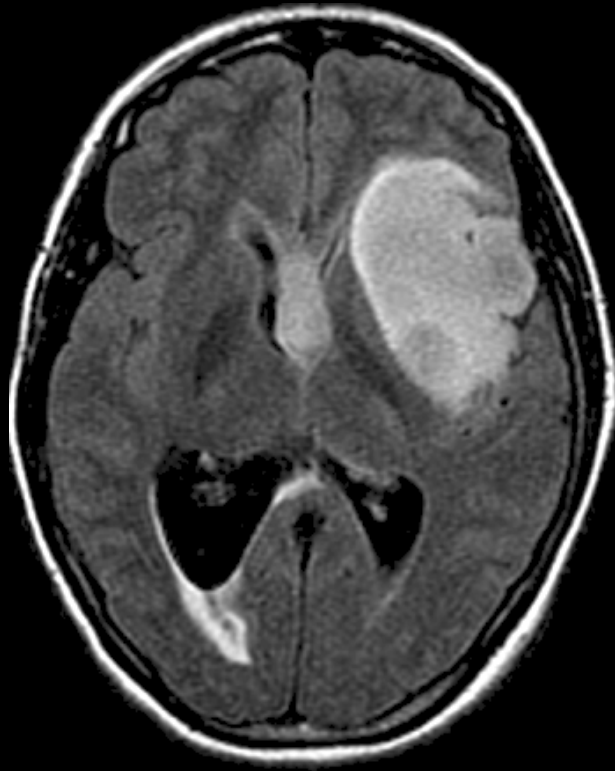
# Tumeurs intra-cérébrales

oligodendrogliome

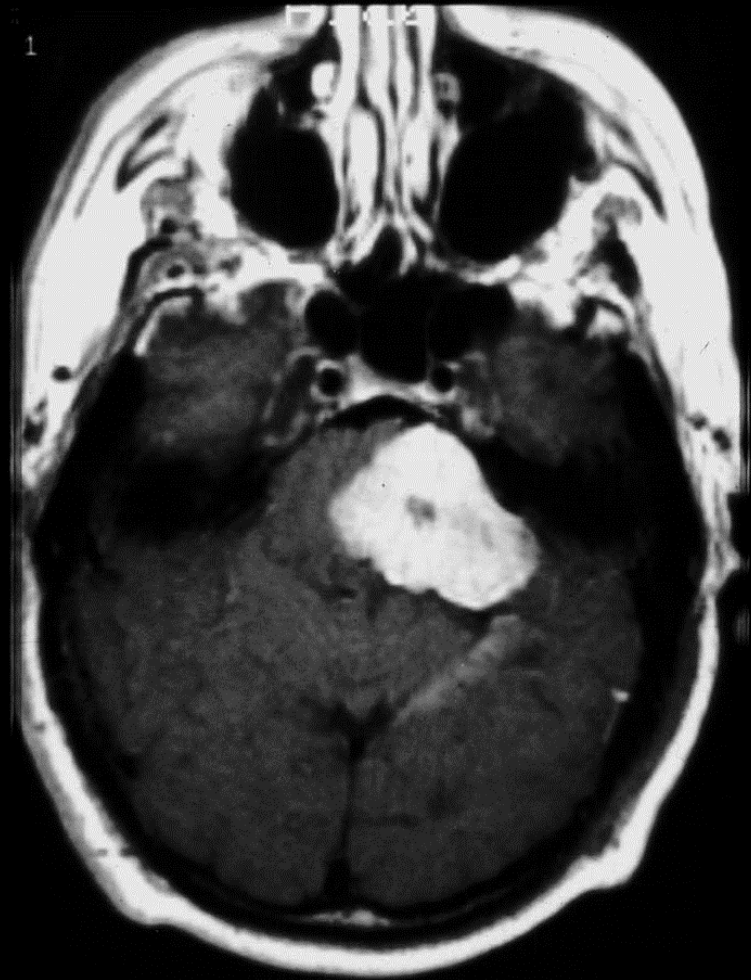




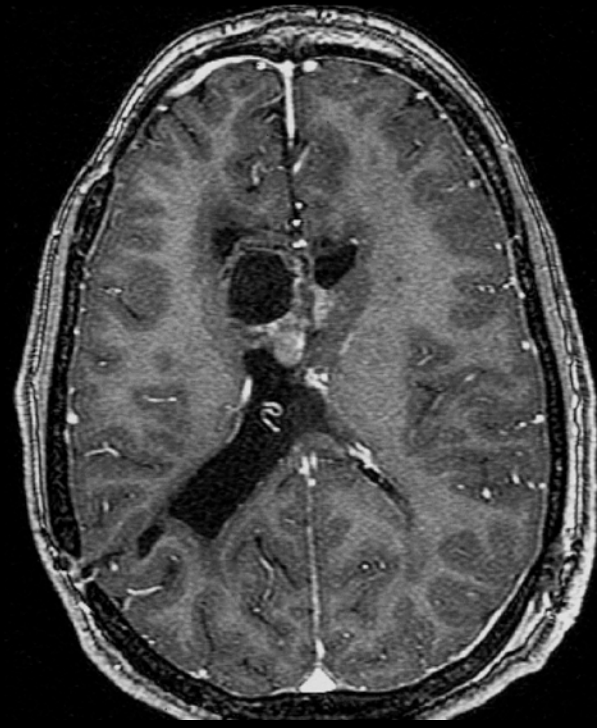
astrocytome



# 1- Calcifications

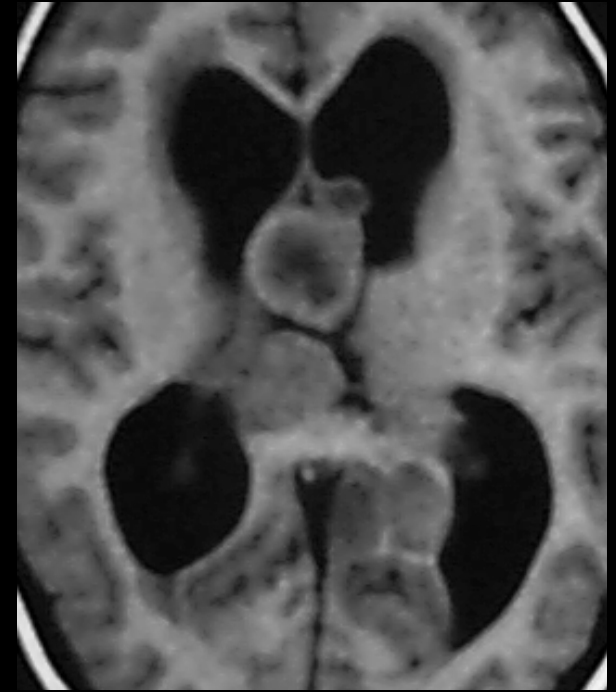
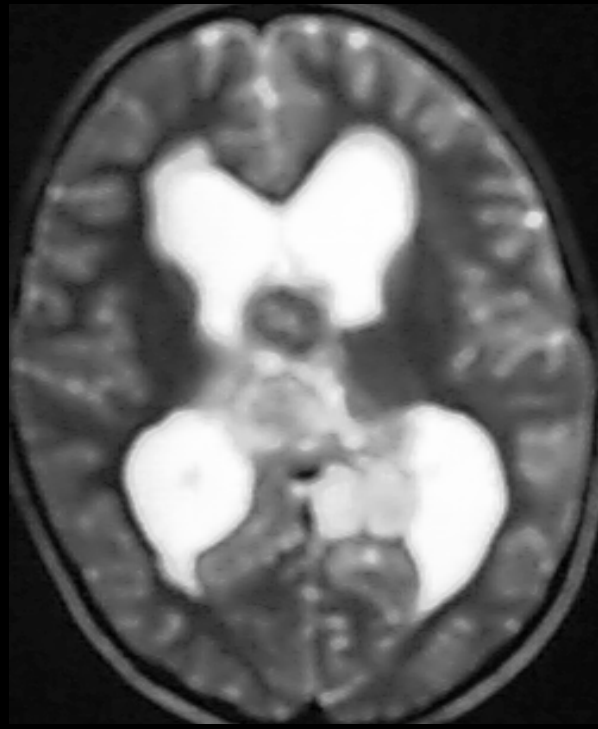


Aspect le plus classique  
Noir à toutes séquences



**astrocytome subependymaire**

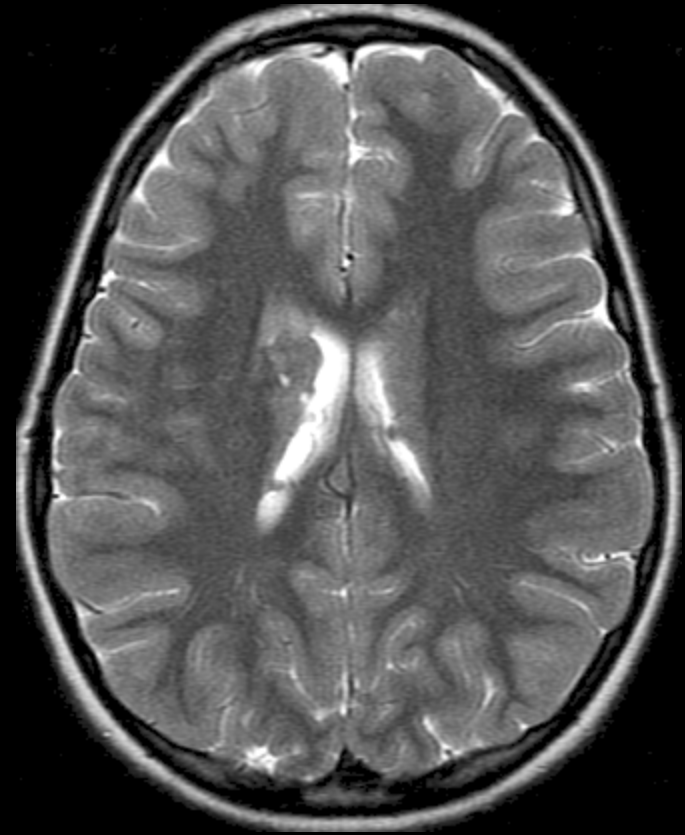
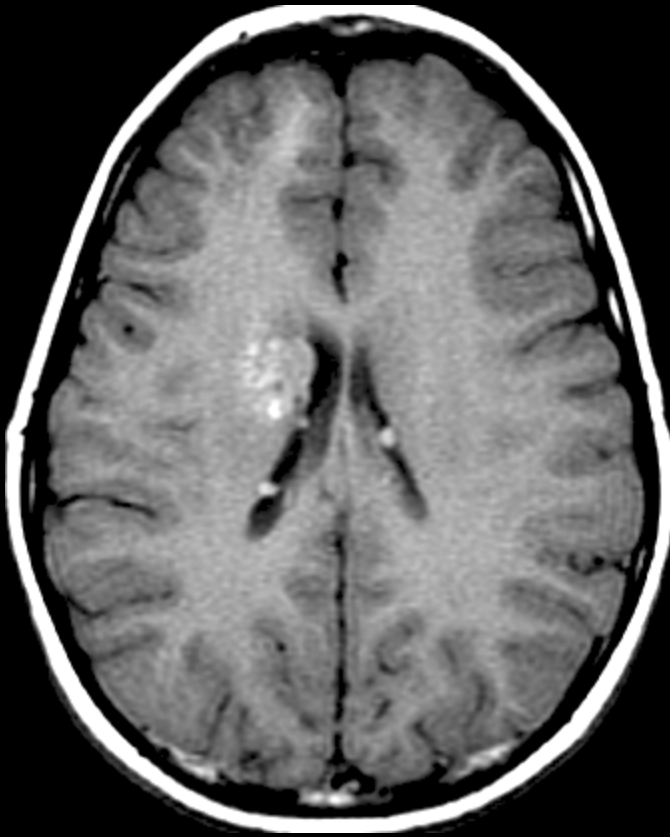
# Calcifications



*Astrocytome sous épendymaire*

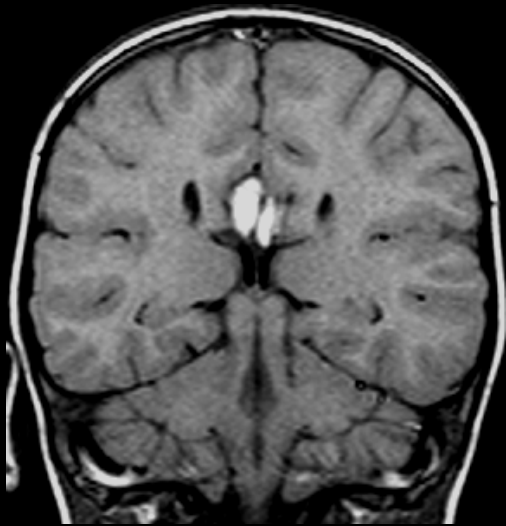
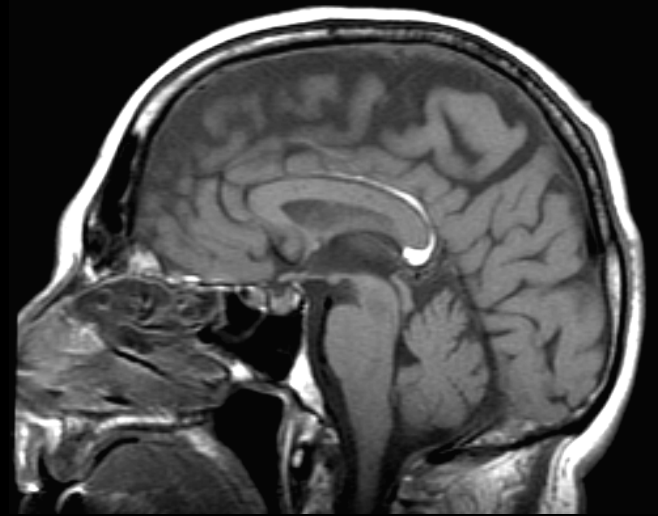
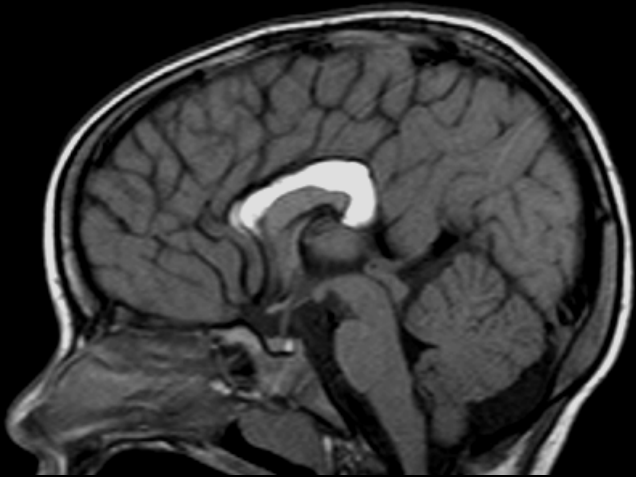
# Calcifications

Aspect inhabituel  
Hyper T1



Tuber sous épendymaire STB

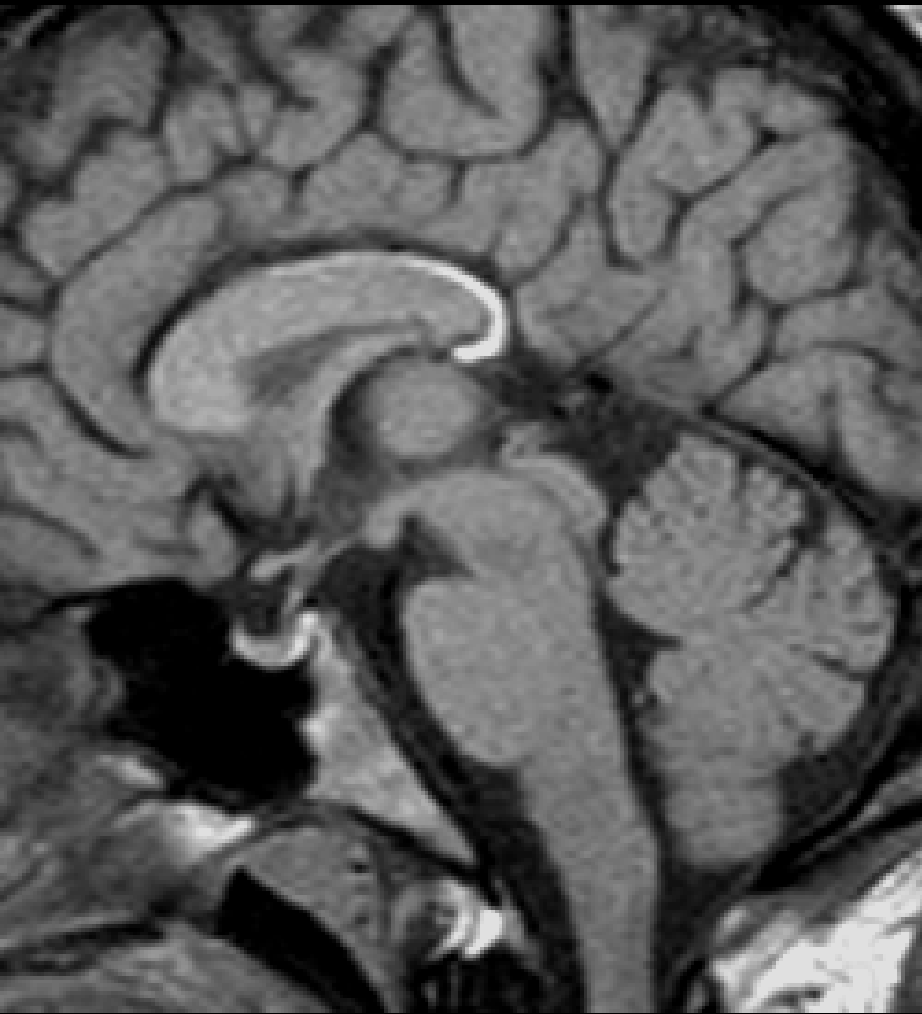
# 2-Graisse



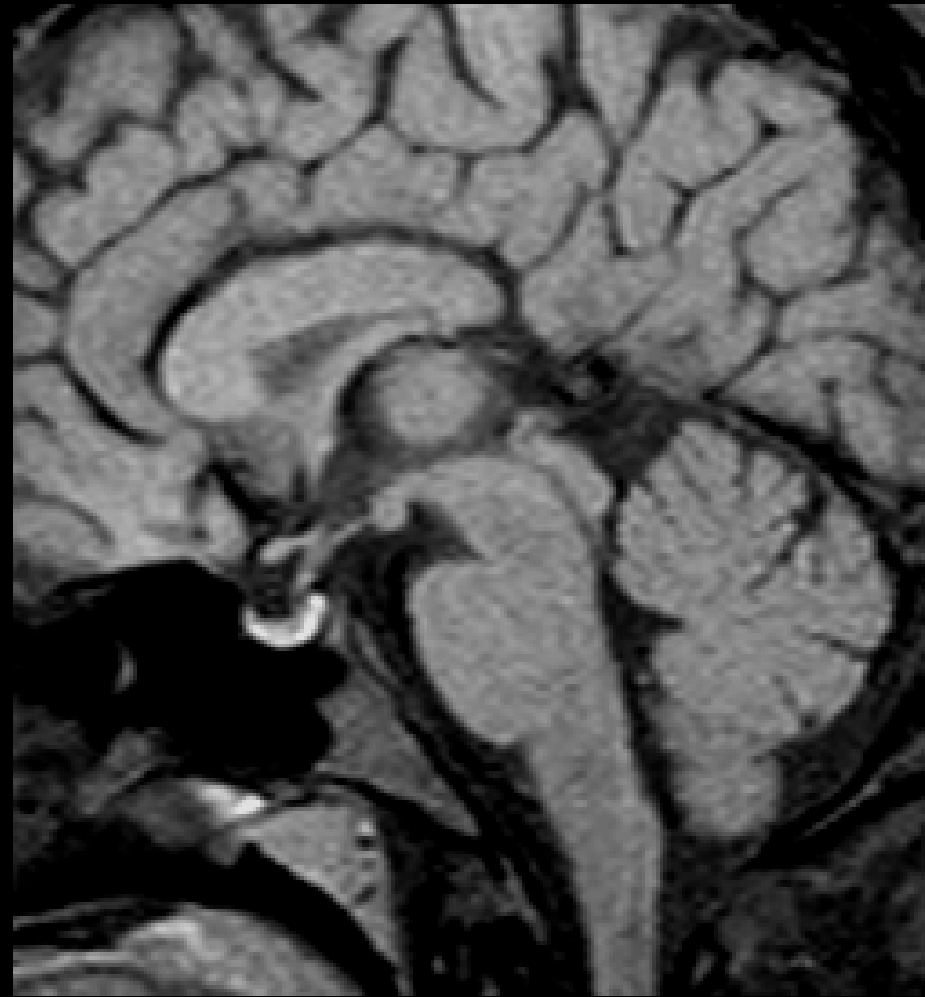
**Lipome du  
corps calleux**



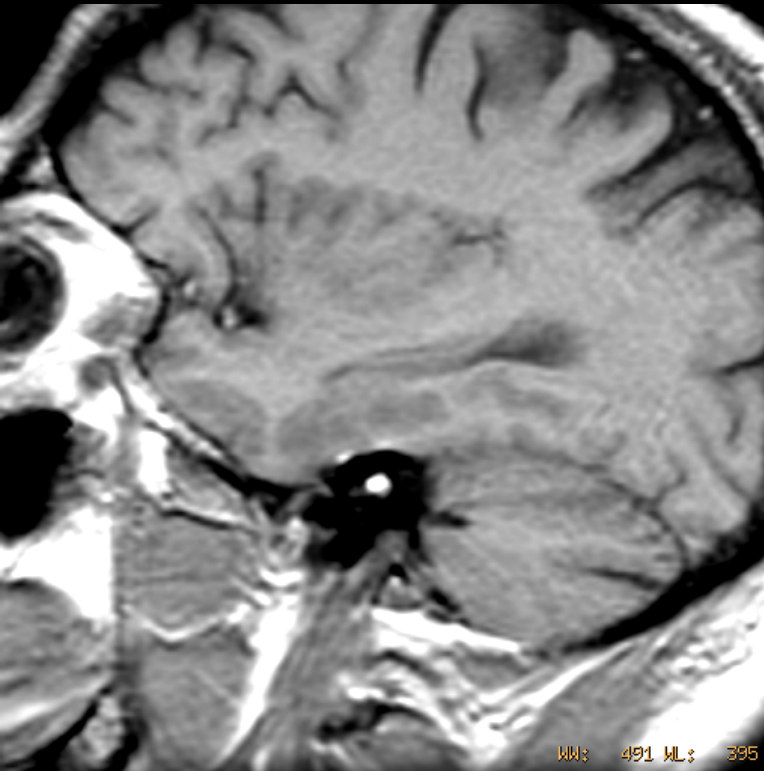
T1



T1 suppression de graisse



**Lipome du corps calleux** pellier



**Lipome du CAI**

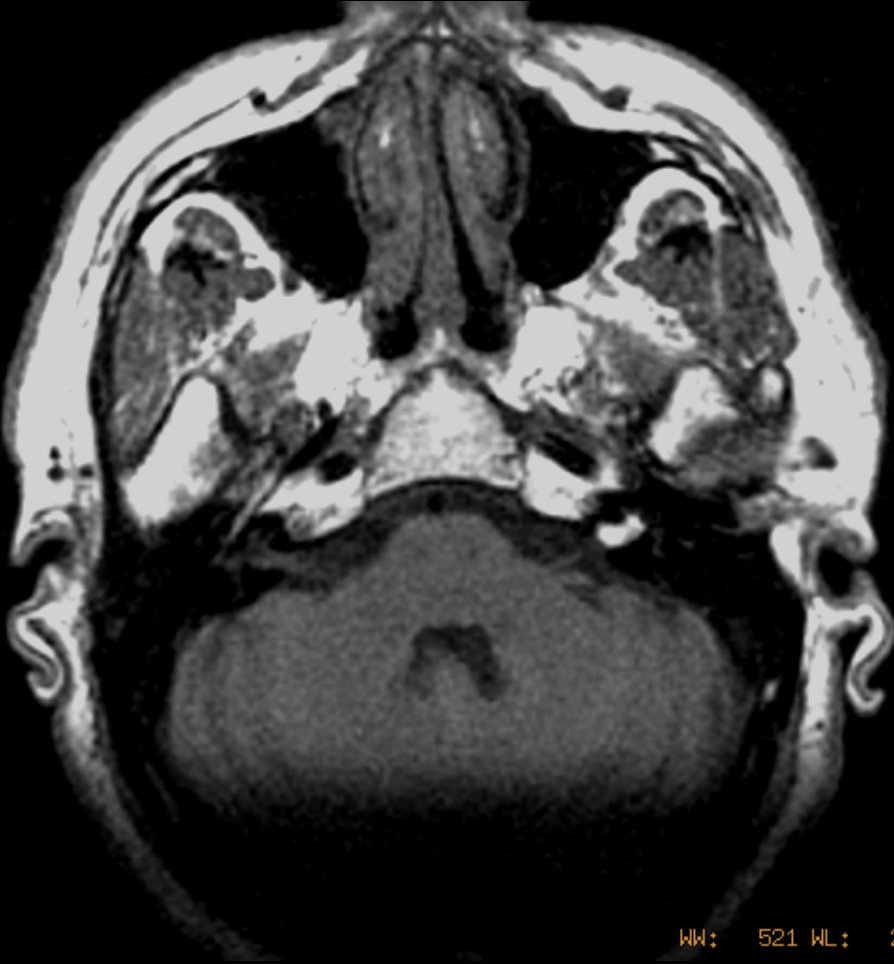


**Jamais Gadolinium  
d'emblée**



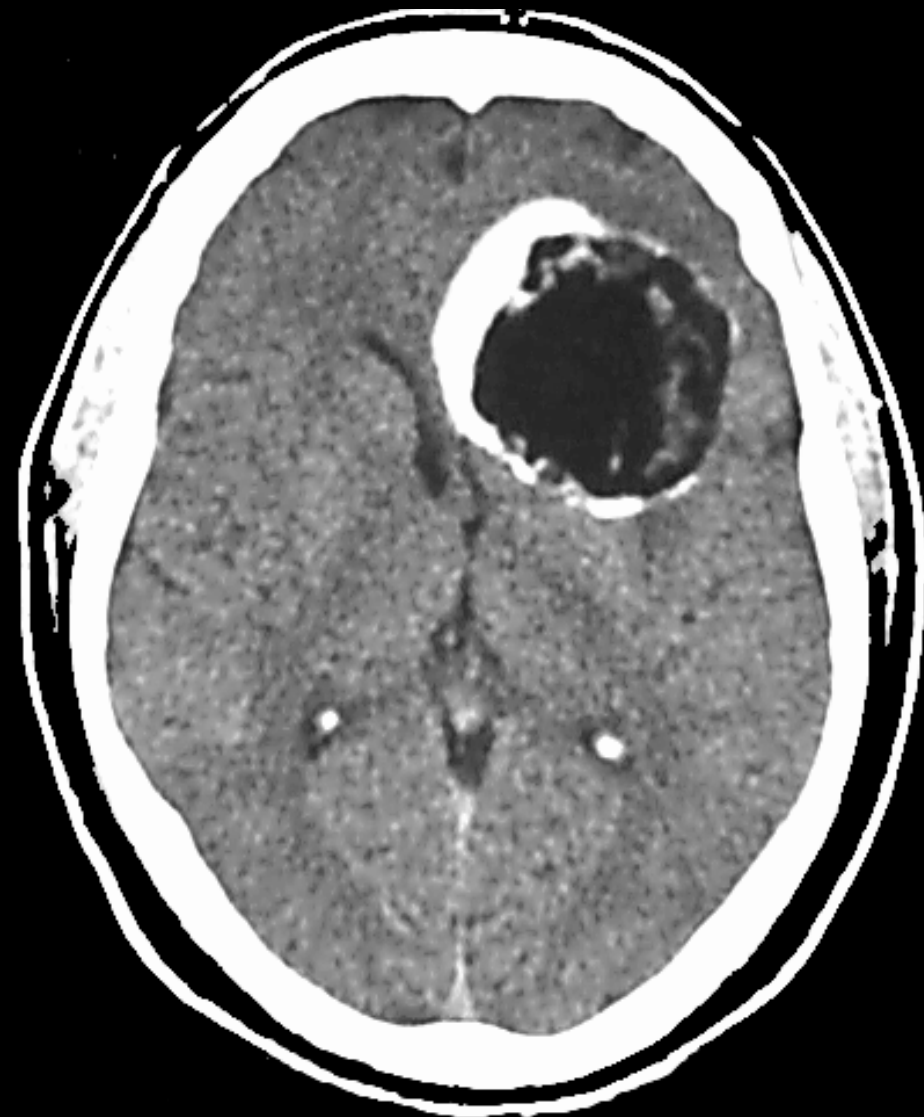
T1

T1 suppression de graisse

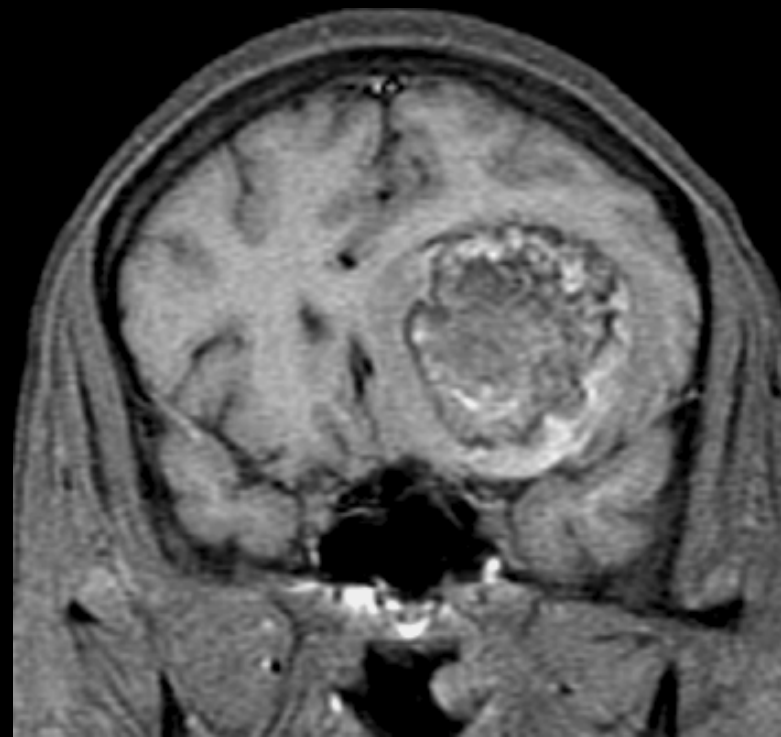
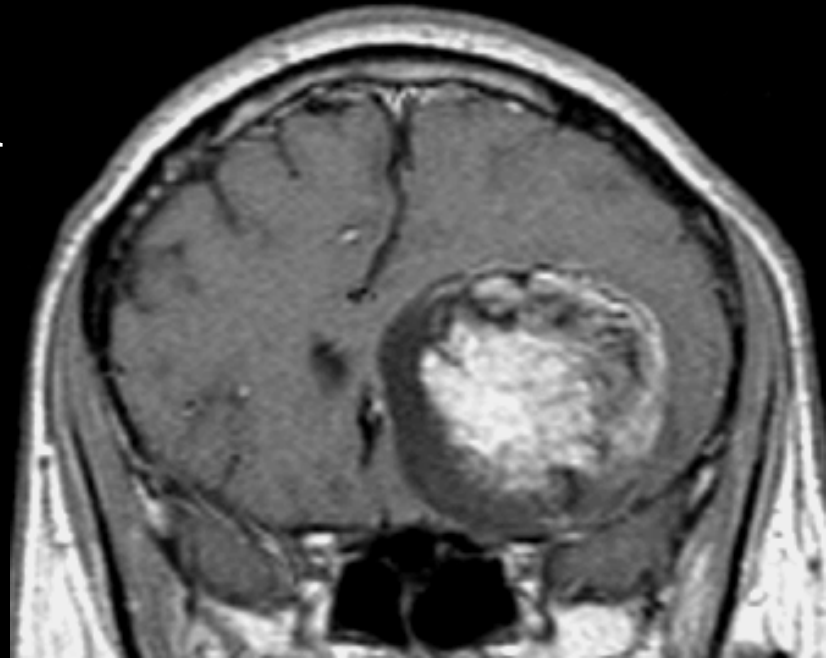


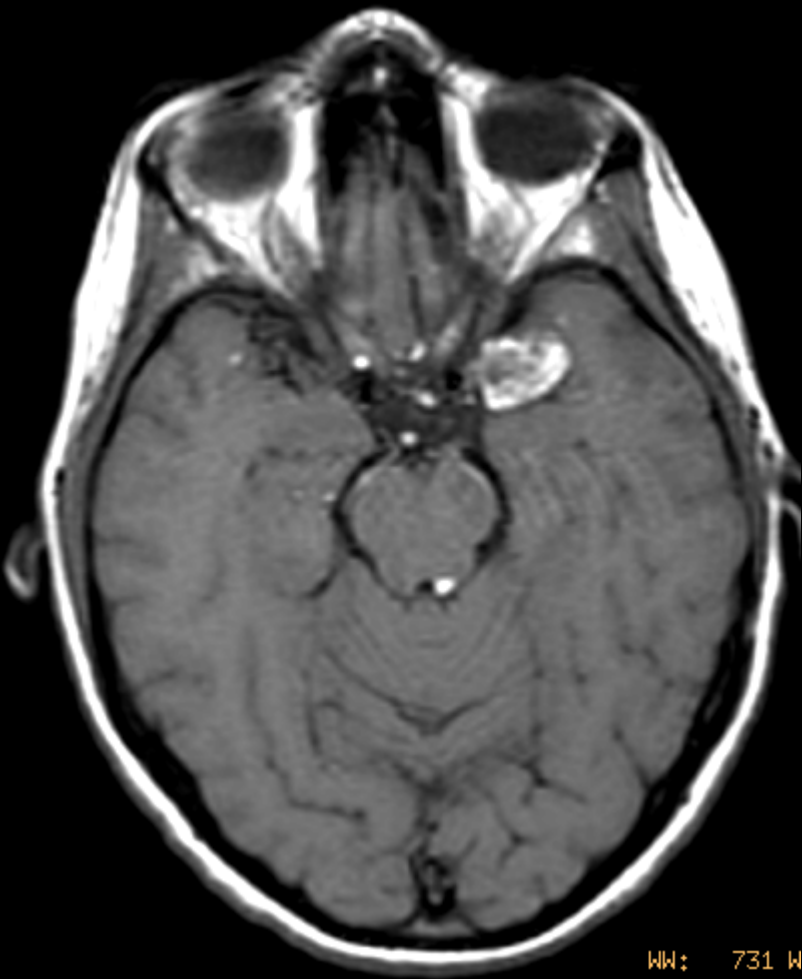
**Lipome du CAI**

**Graisse et calcification**



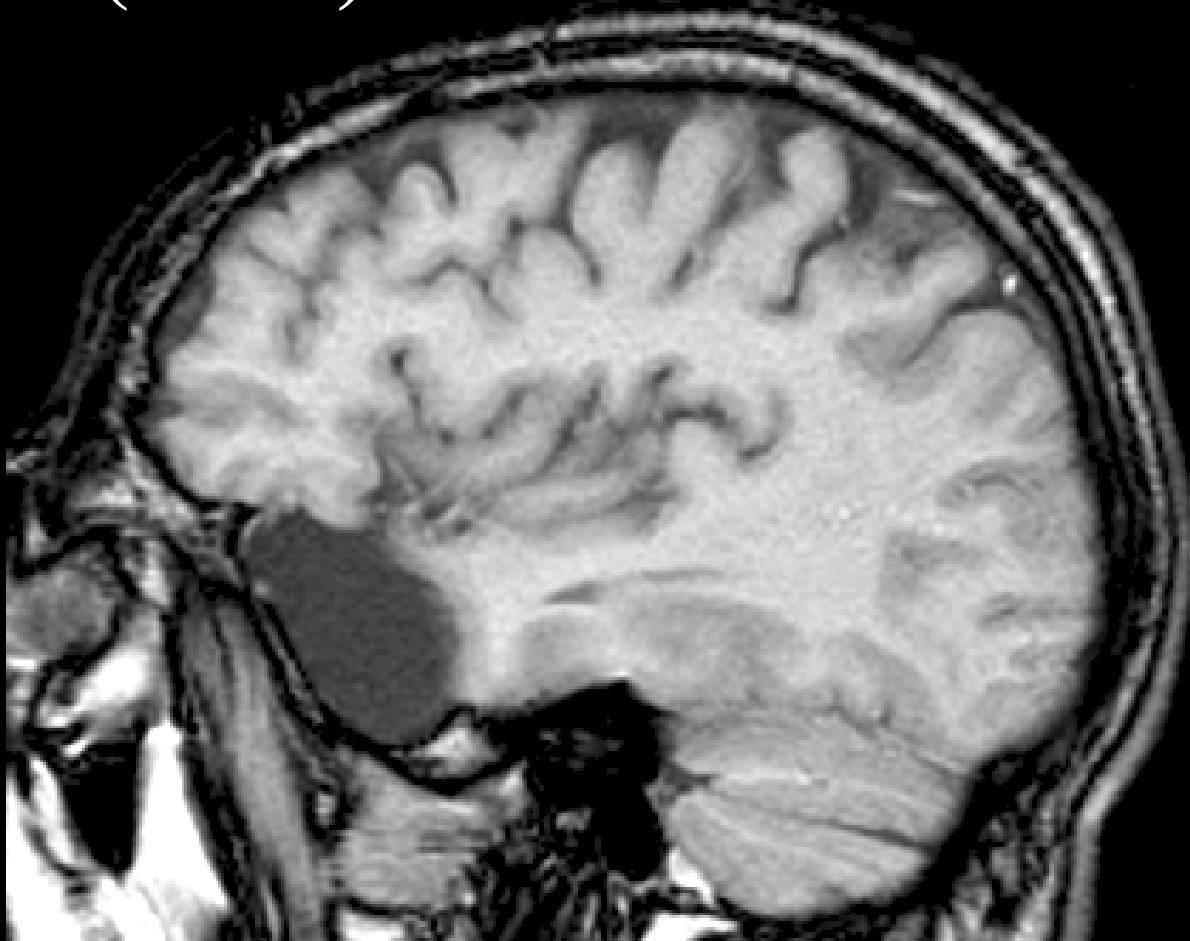
**Kyste dermoïde**



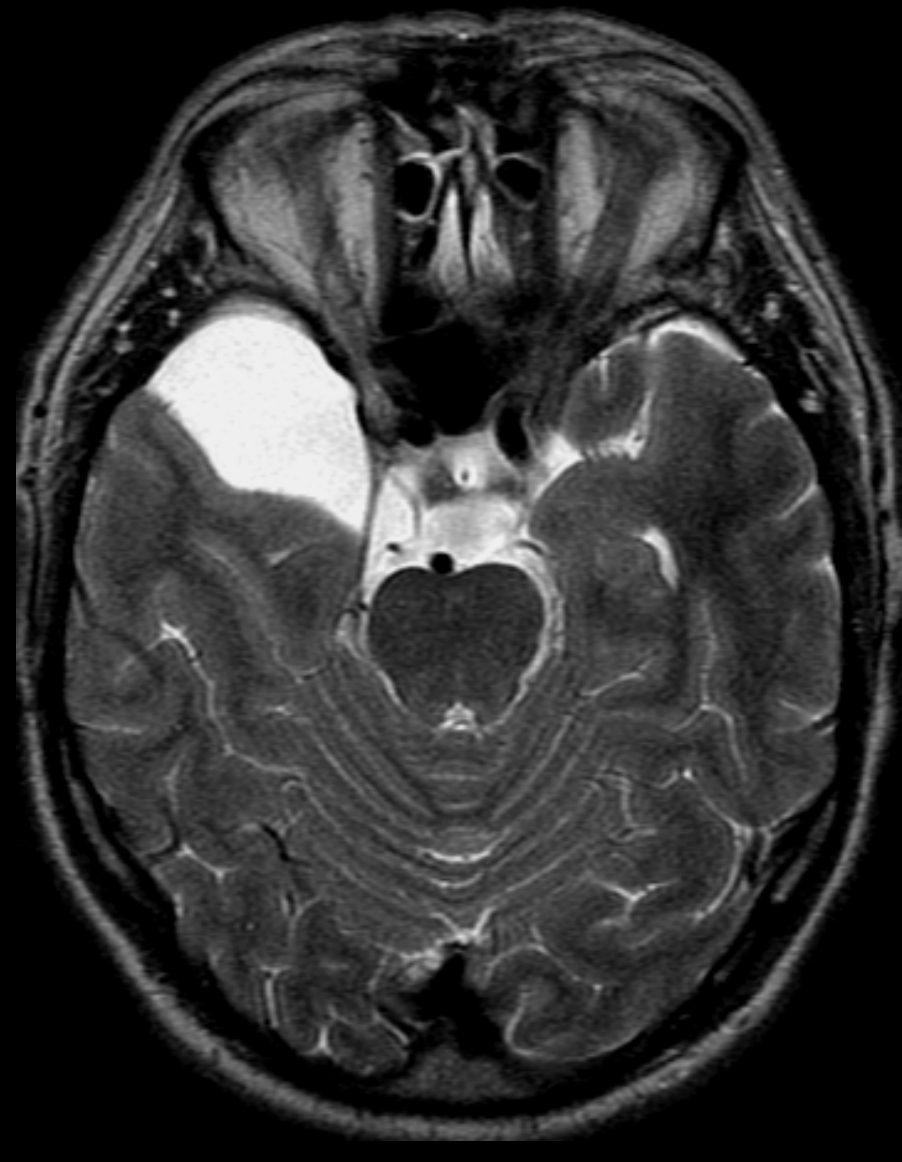
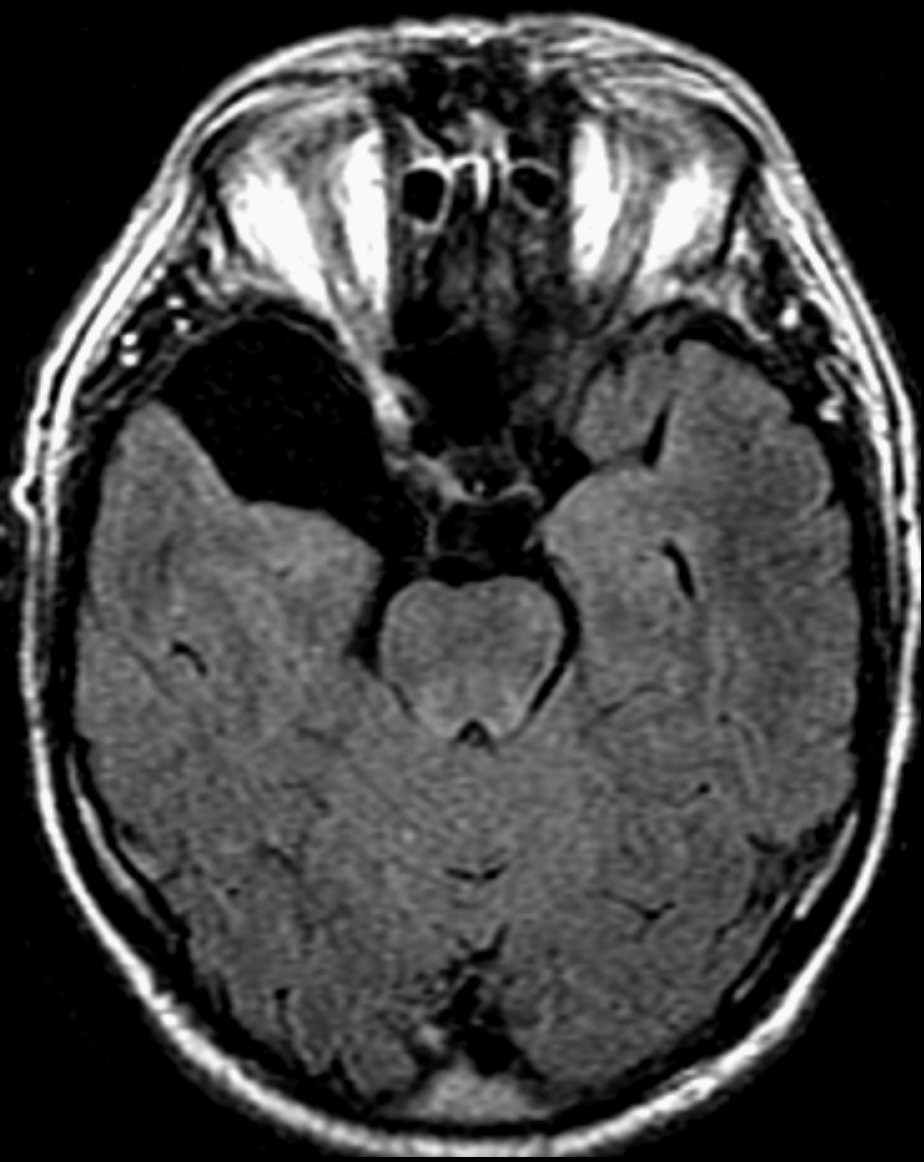


Jacquemart **kyste dermoïde rompu**

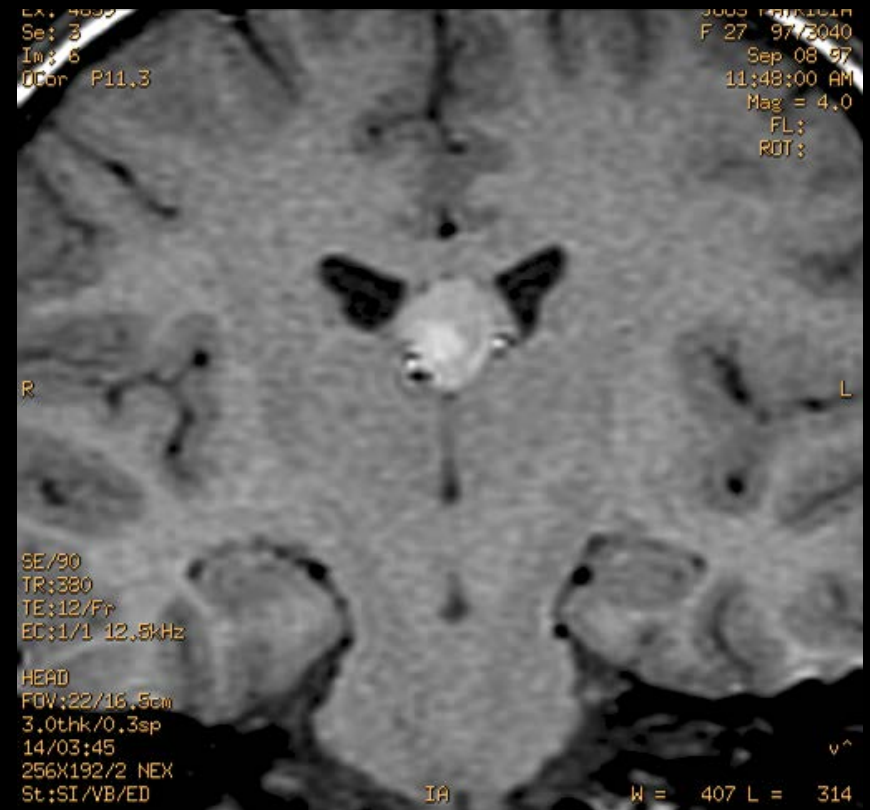
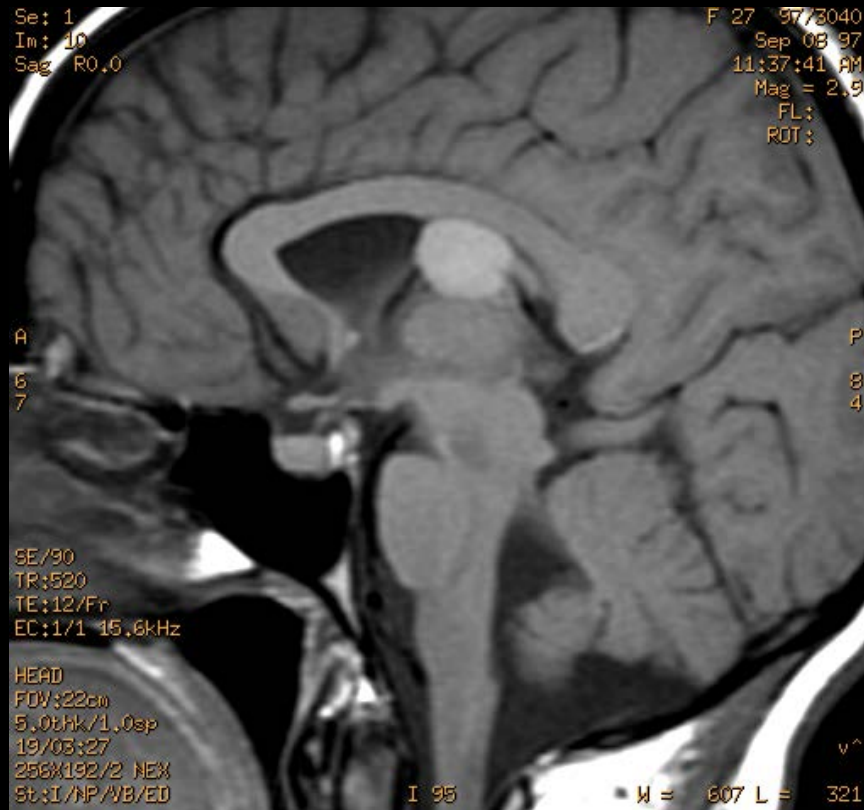
**3-EAU (LCS)**



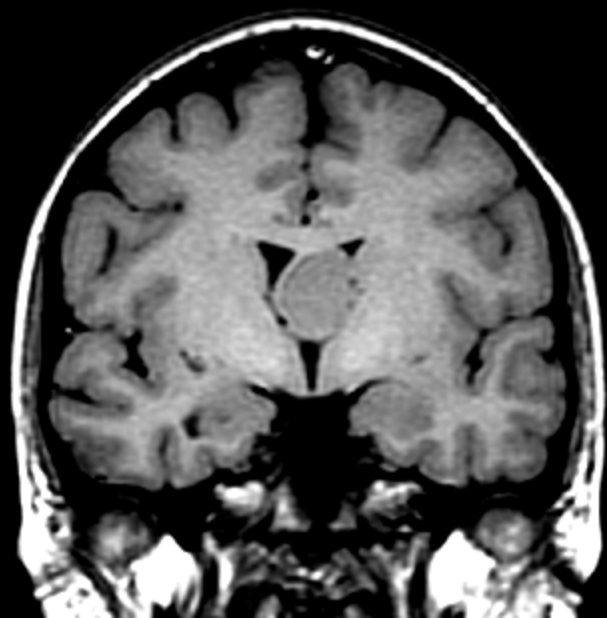
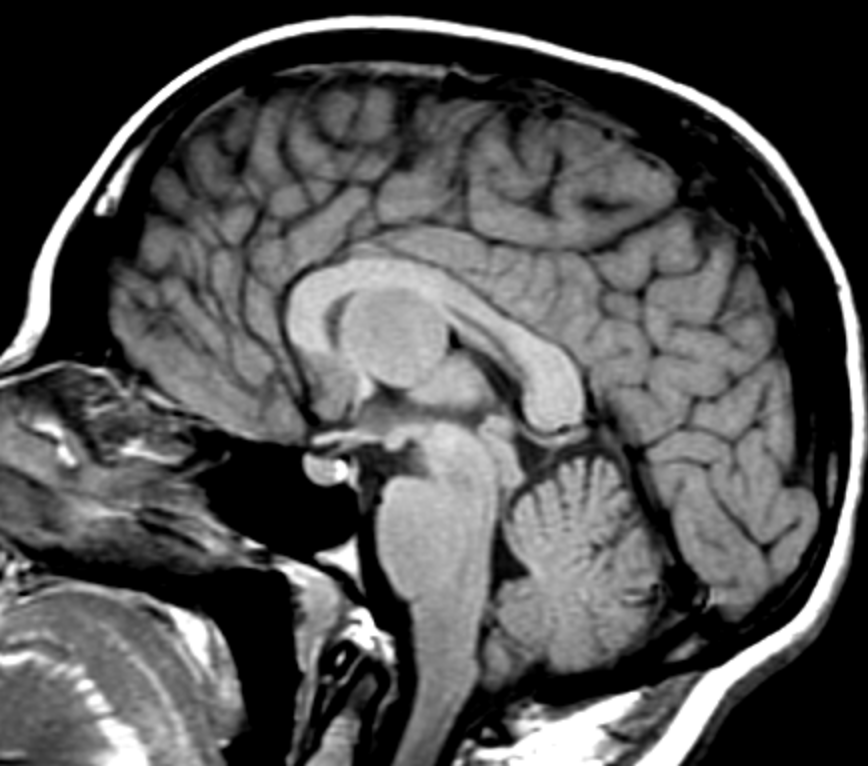
**Kyste arachnoïdien**



# 4-Liquide et Protéines

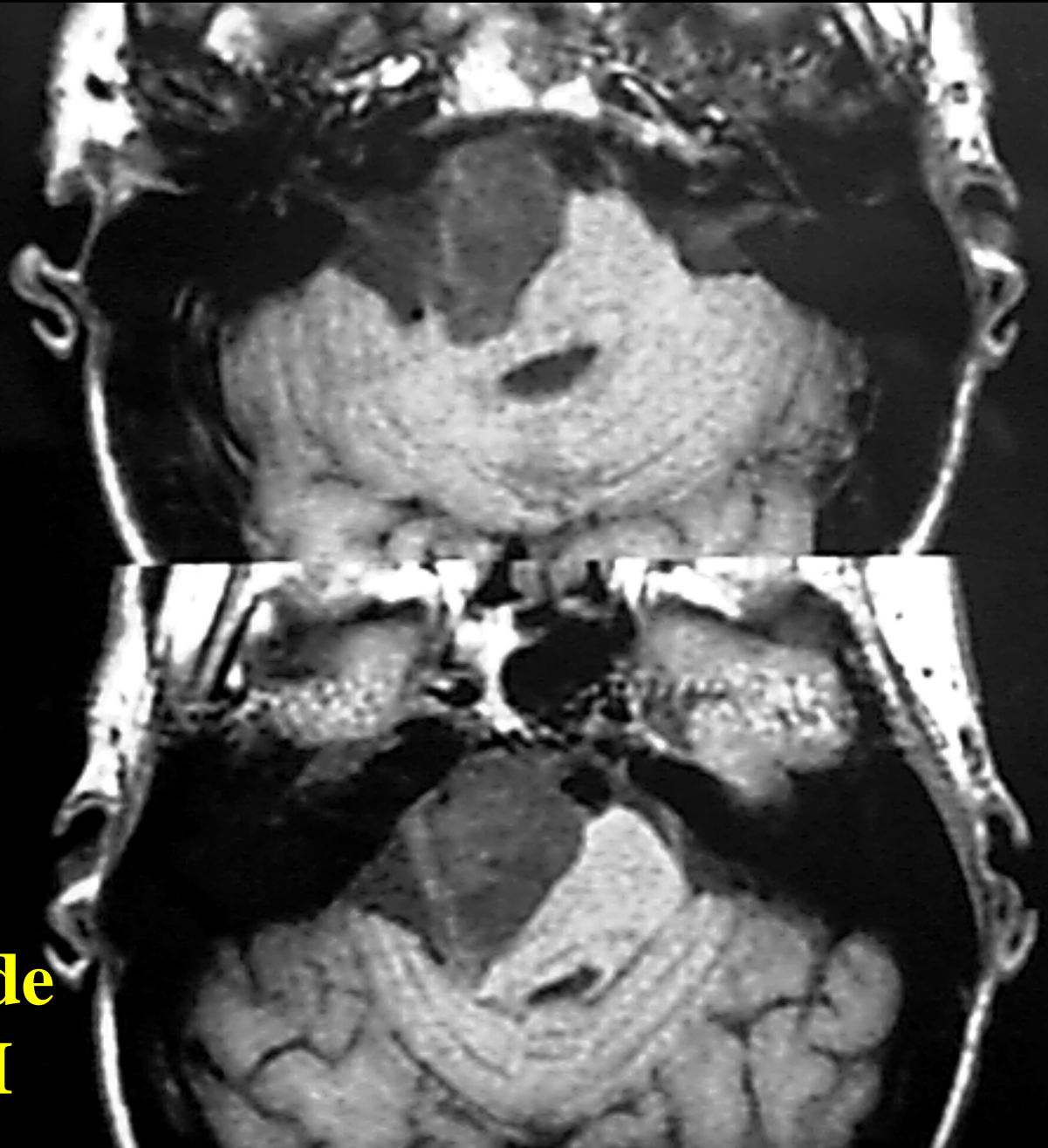


**Kyste colloïde**



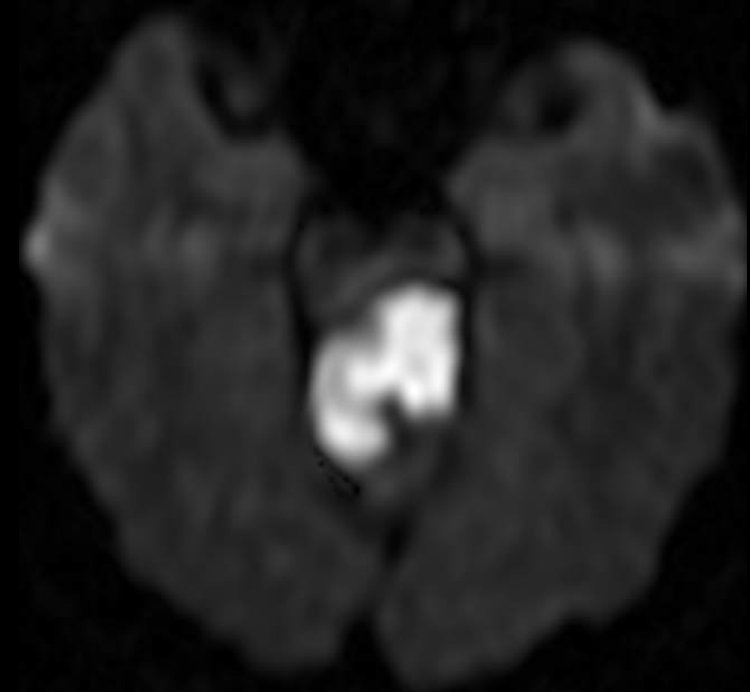
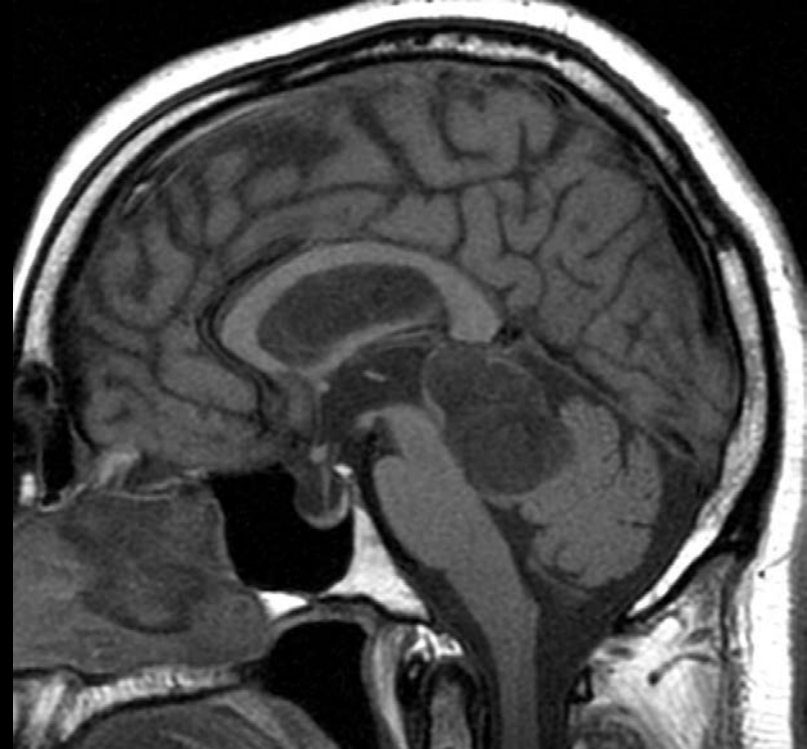
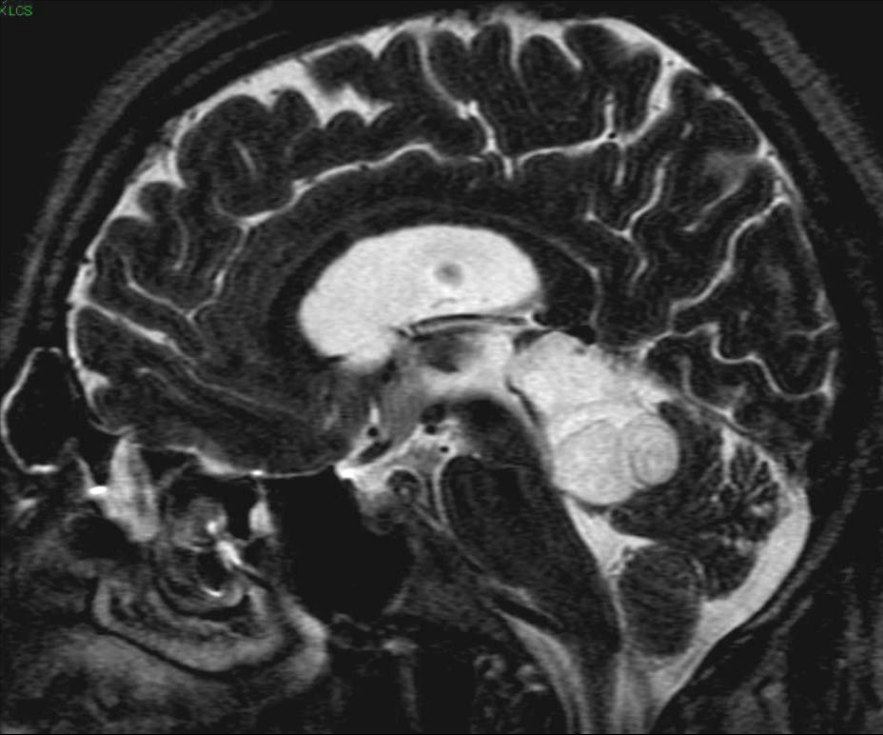
**FLAIR**

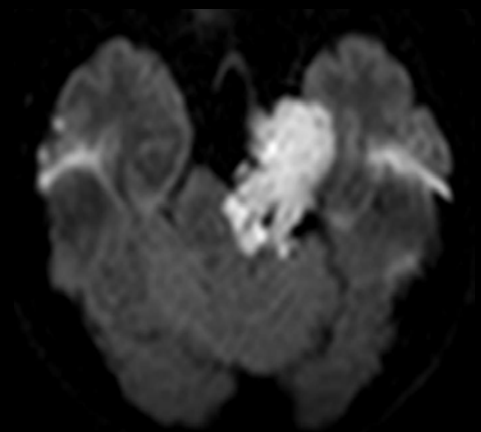
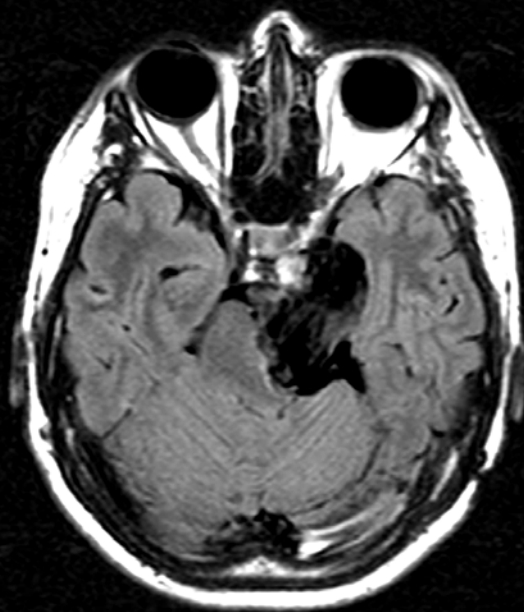
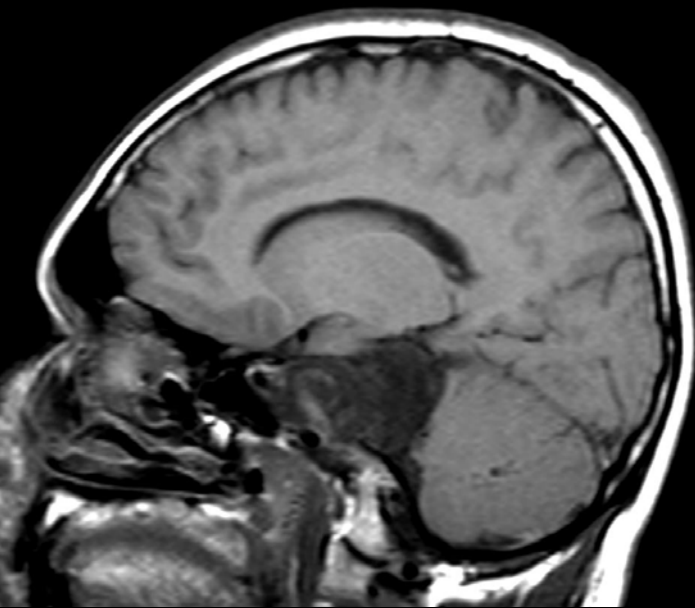
**5-Débris  
cellulaires**



**Kyste épidermoïde  
Cholestéatome I**

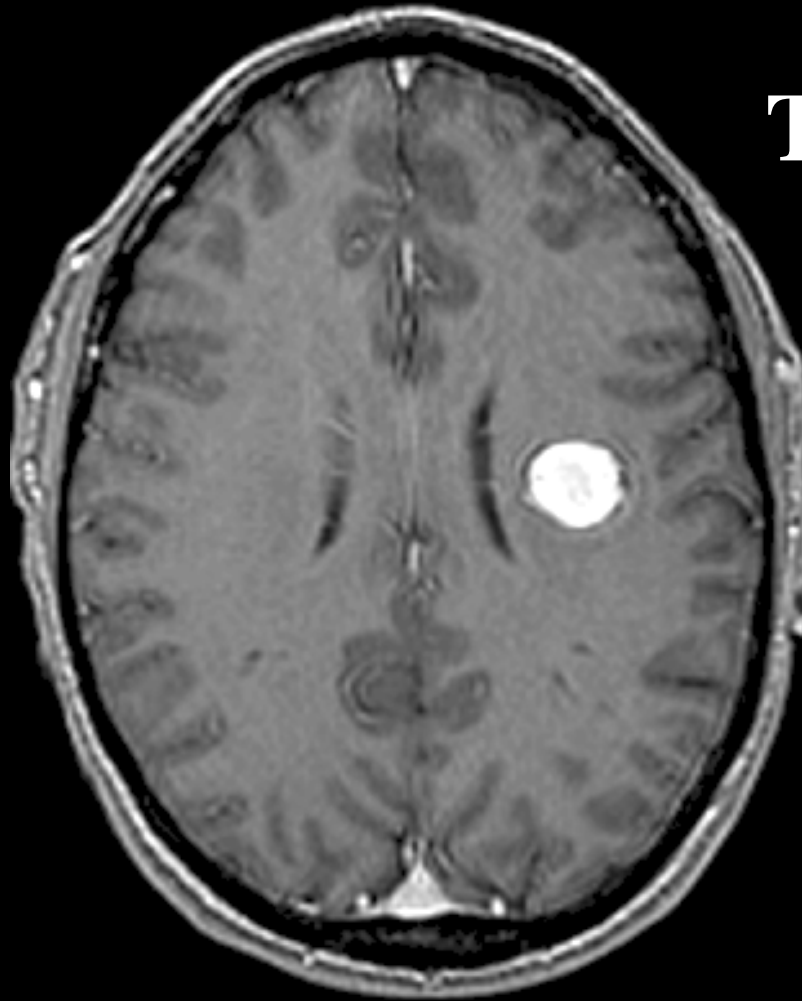




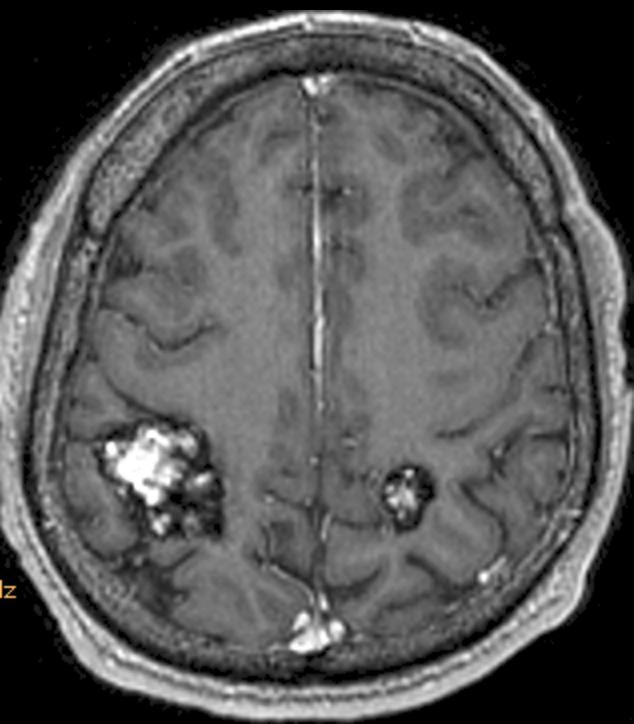


**6-Sang**

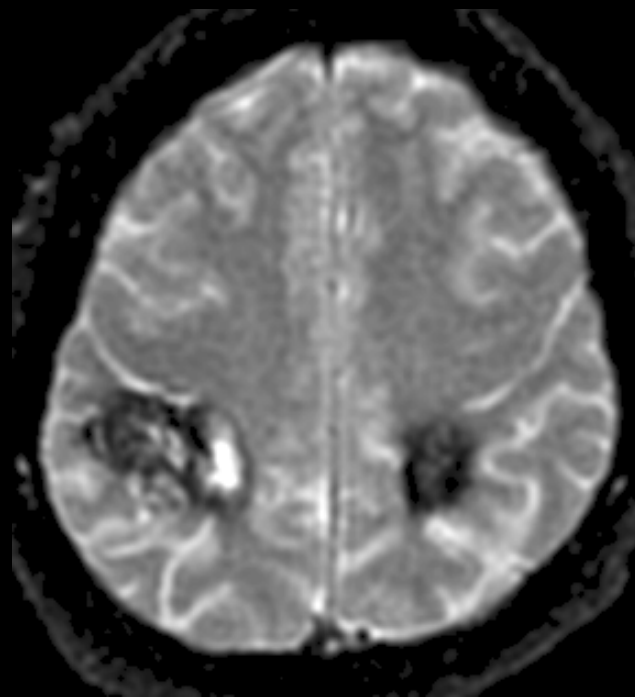
**T1**



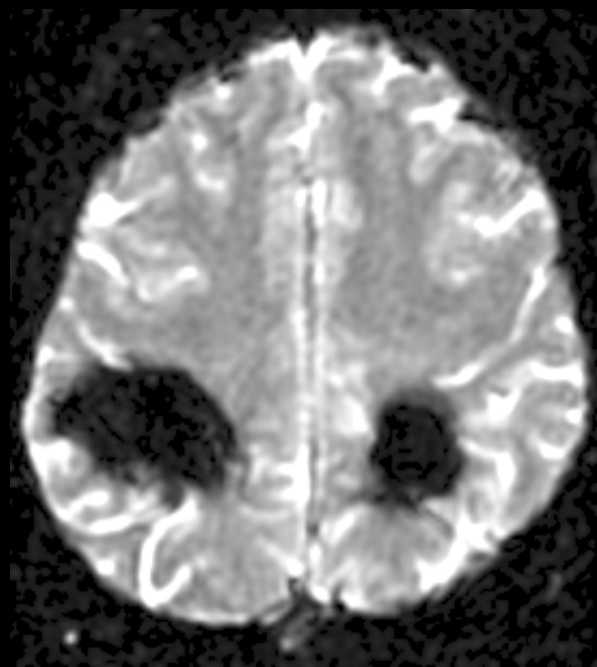
**Cavernomes**



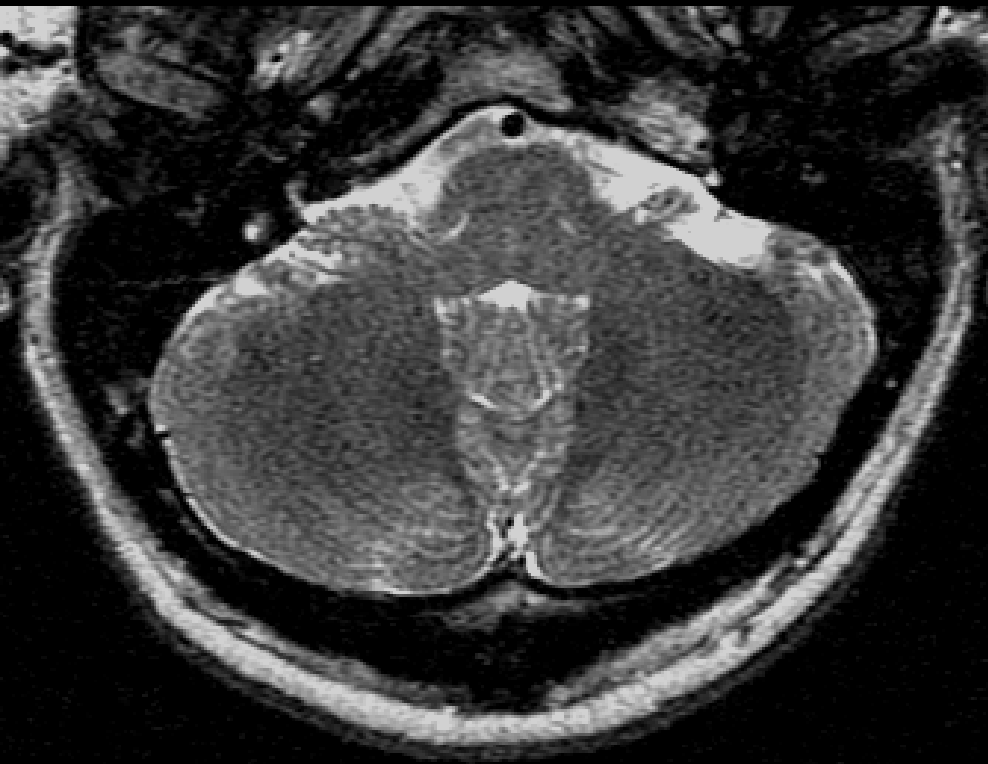
**EG T1**



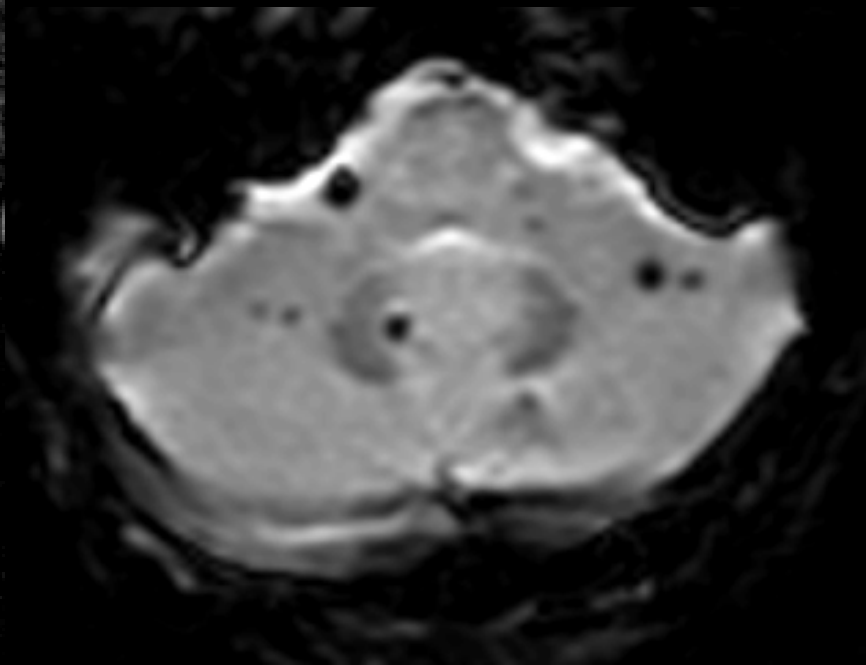
**EG T2\***



**EG EPI T2\***

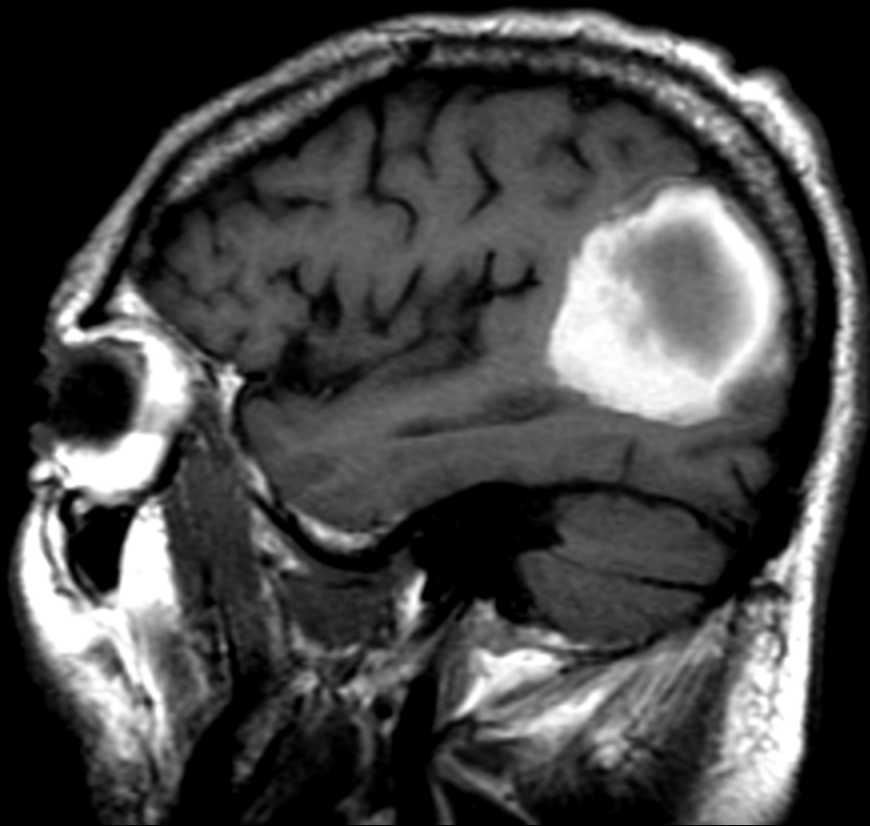


**FSE T2**

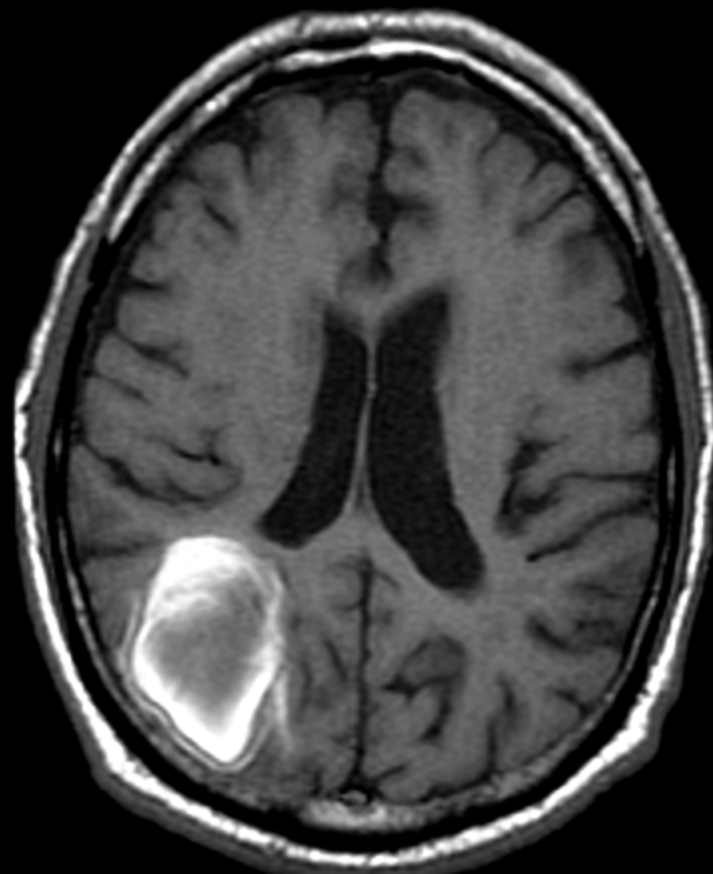


**EPI-EG-T2\***

**T1**



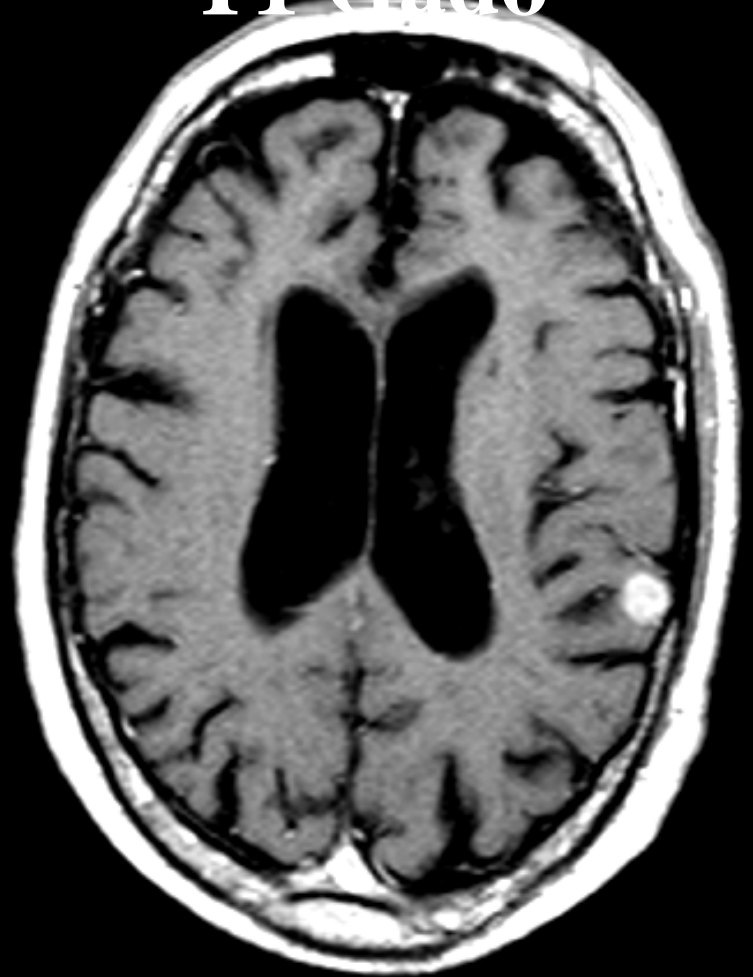
**T1 gado**



**métastase hémorragique**

**T1**

**T1 Gado**



**métastase de mélanome**

# **11-Néovascularisation**

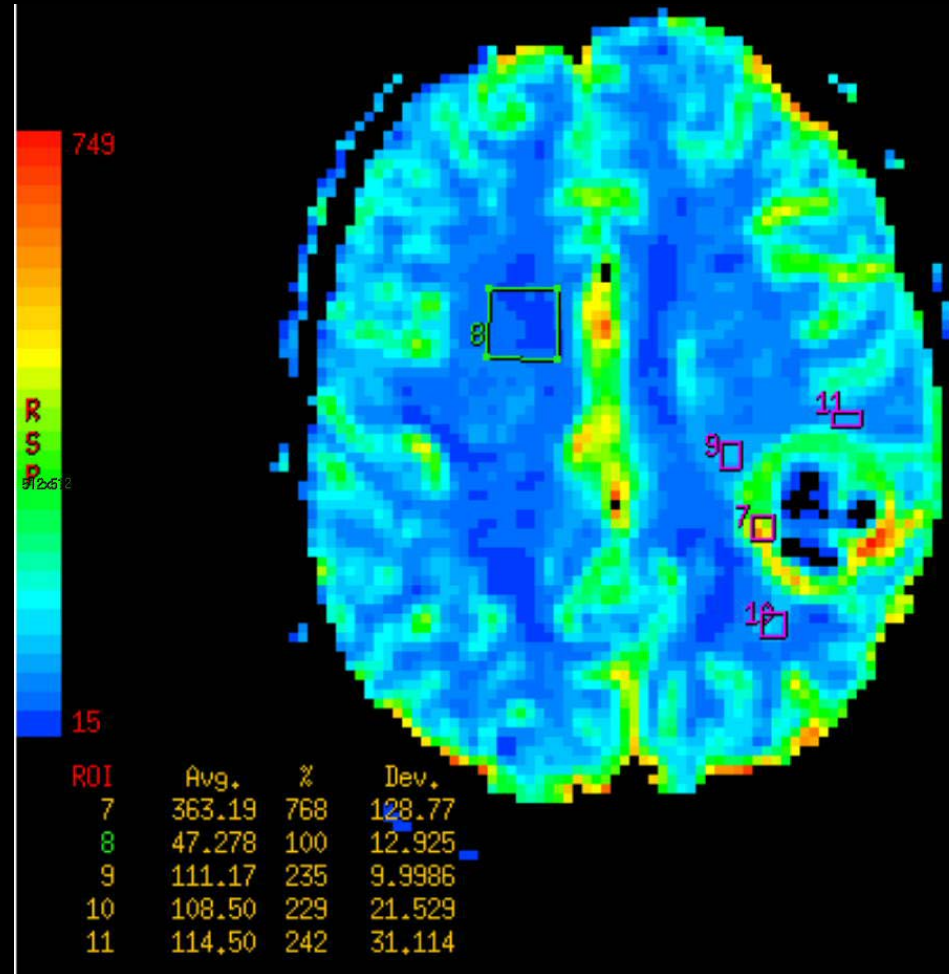
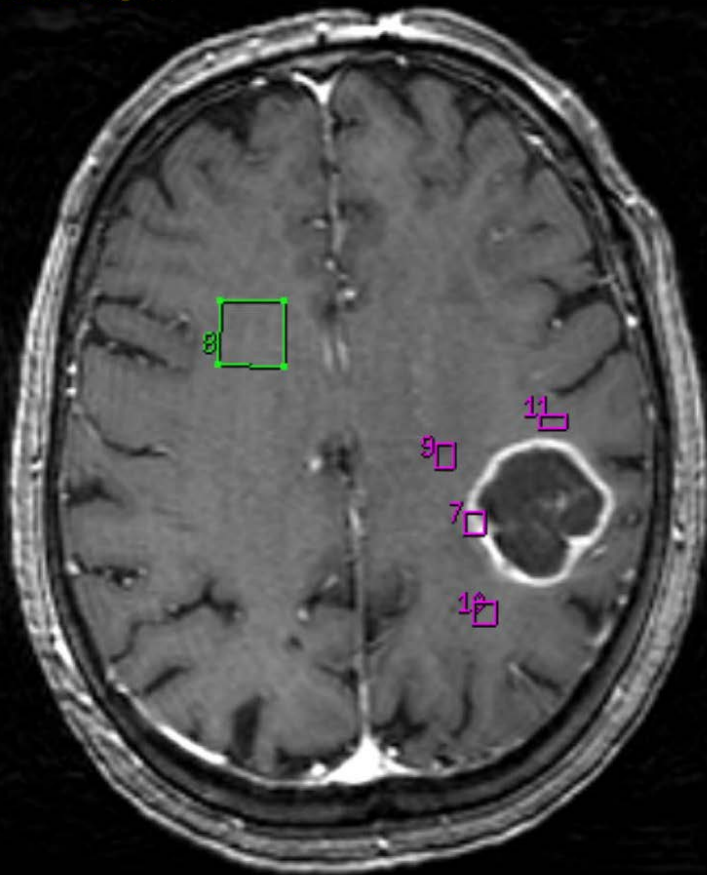
## **Imagerie de perfusion**

**rCBV**

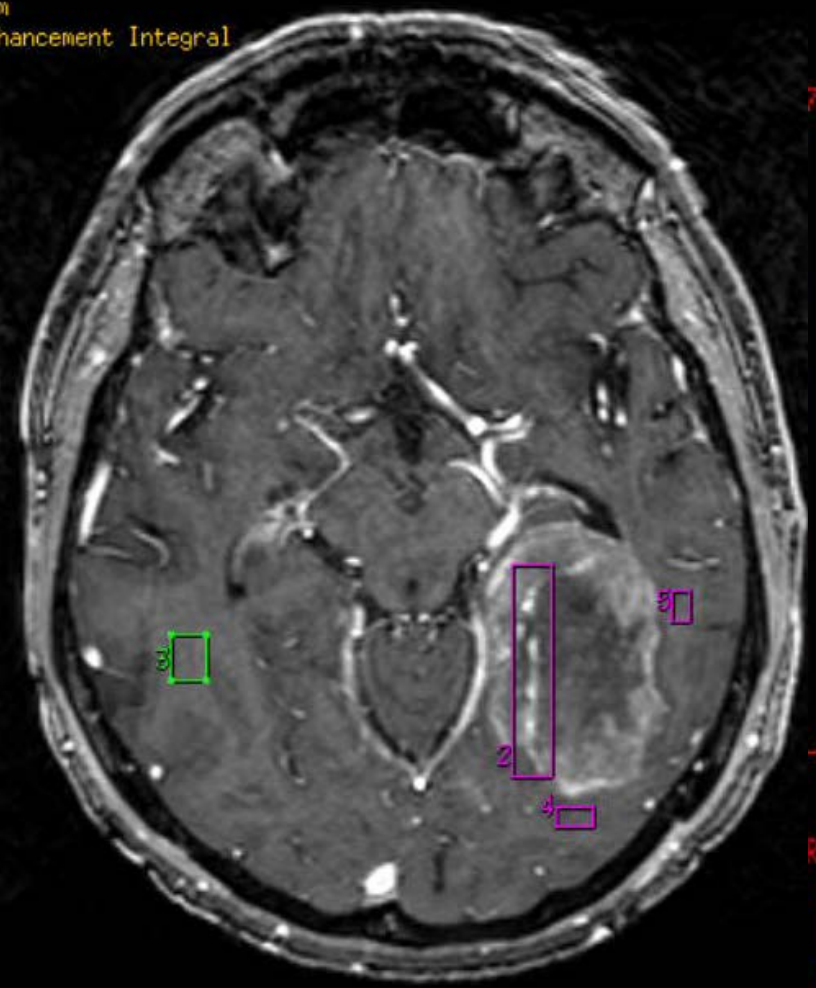


# Tumeur infiltrante

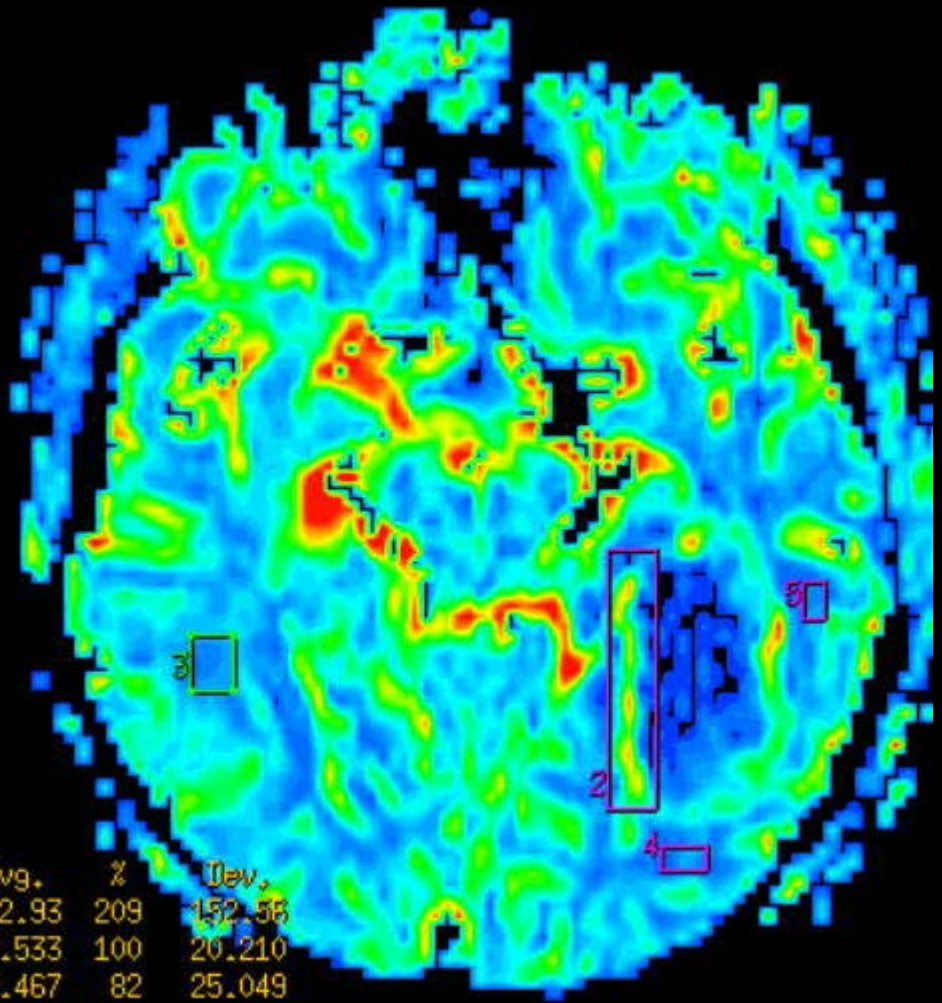
ment Integral



Enhancement Integral



717

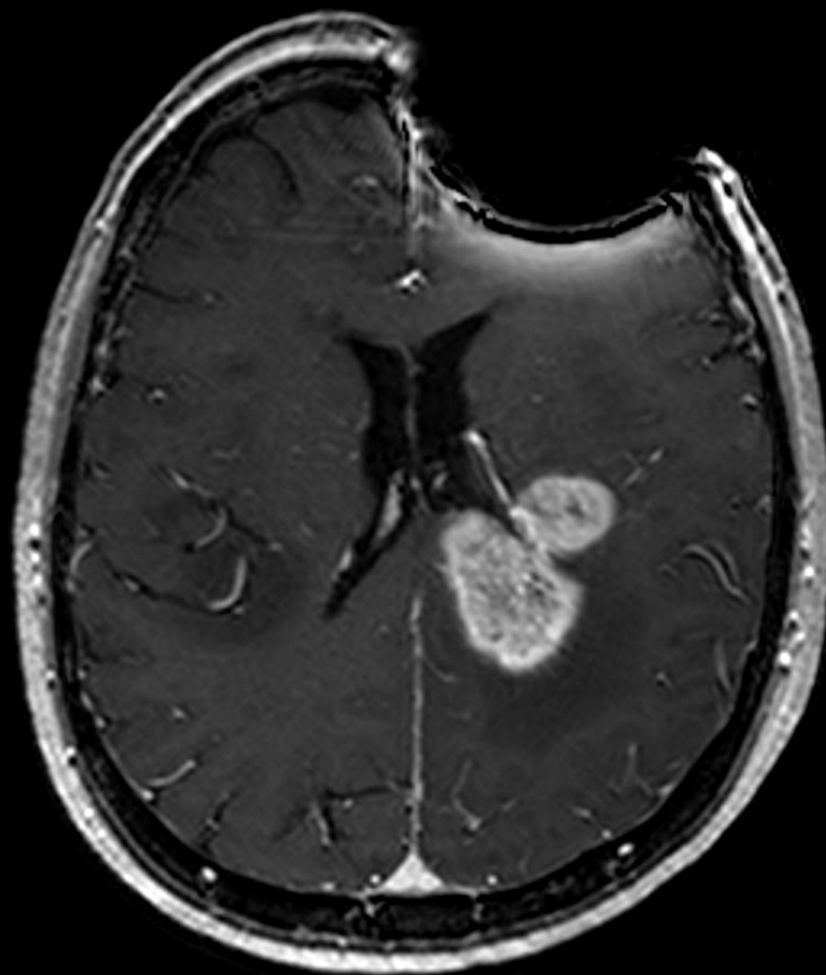
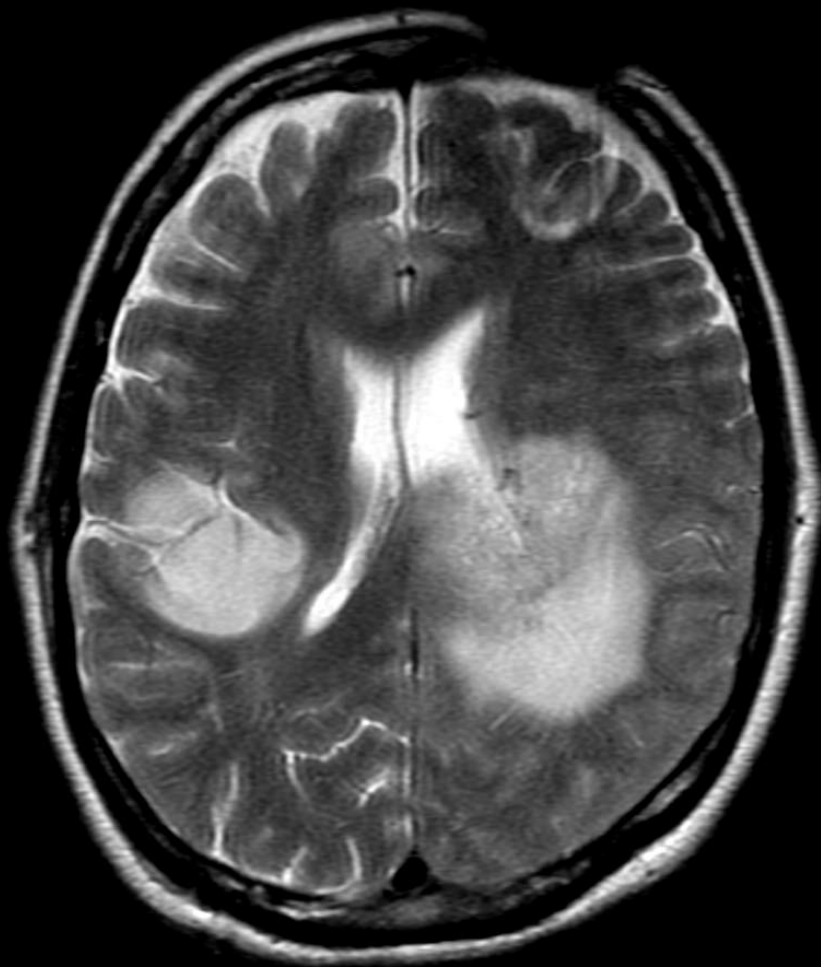


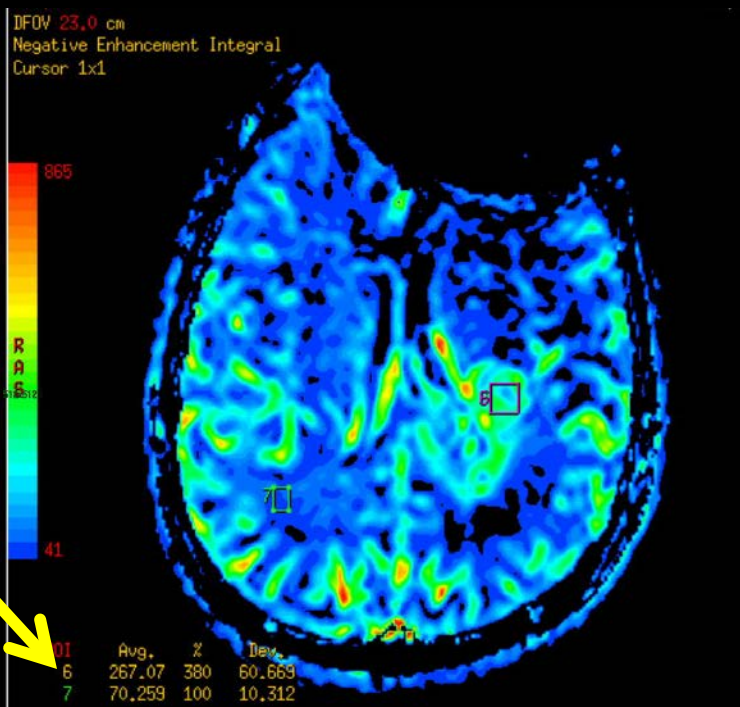
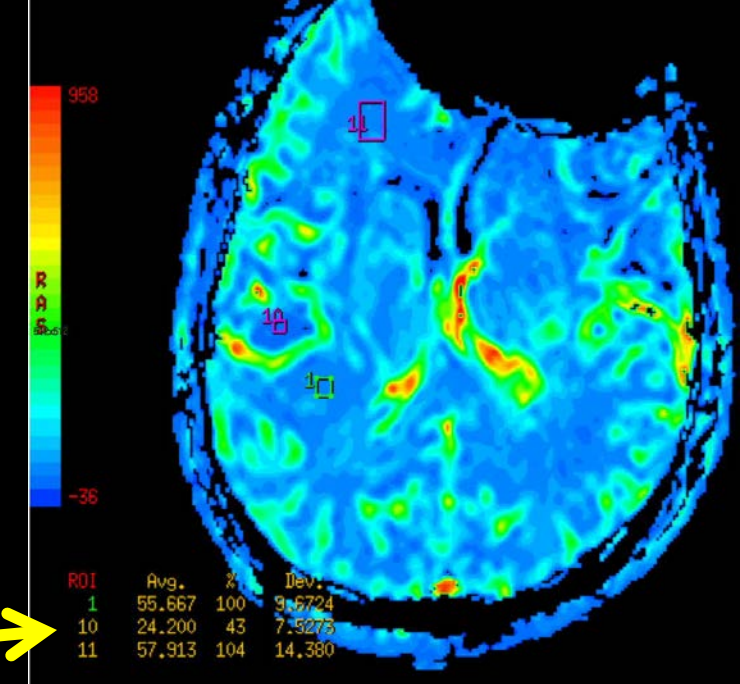
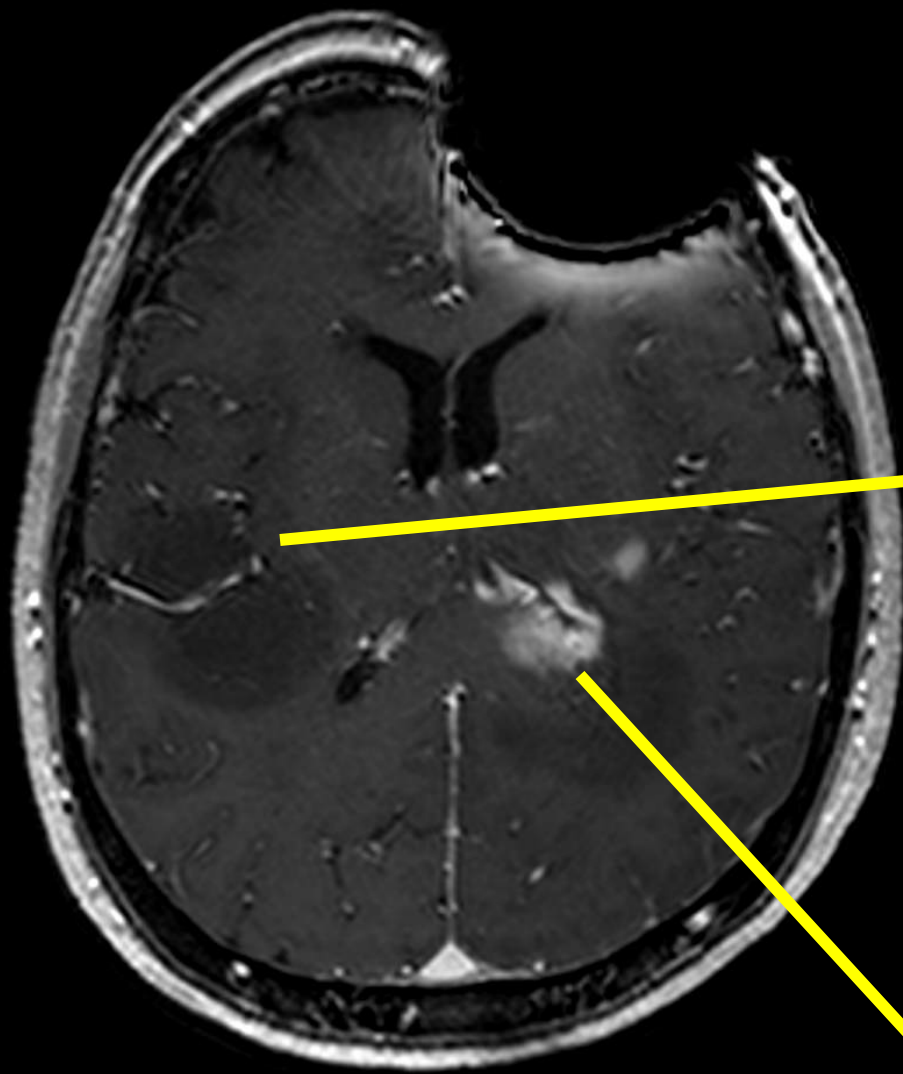
-15

ROI	Avg.	%	Dev.
2	132.93	209	152.55
3	63.533	100	20.210
4	52.467	82	25.049
5	50.333	79	16.028

# Métastase

## Astrocytome et glioblastome





L P I

# 12-Spectroscopie

