

Cas 3

Femme, 71 ans.

Asthénie depuis quelques semaines et douleur de la hanche gauche.

Continue malgré tout à utiliser son vélo et fait une chute.

Par la suite , elle consulte en rhumatologie pour sa hanche gauche.

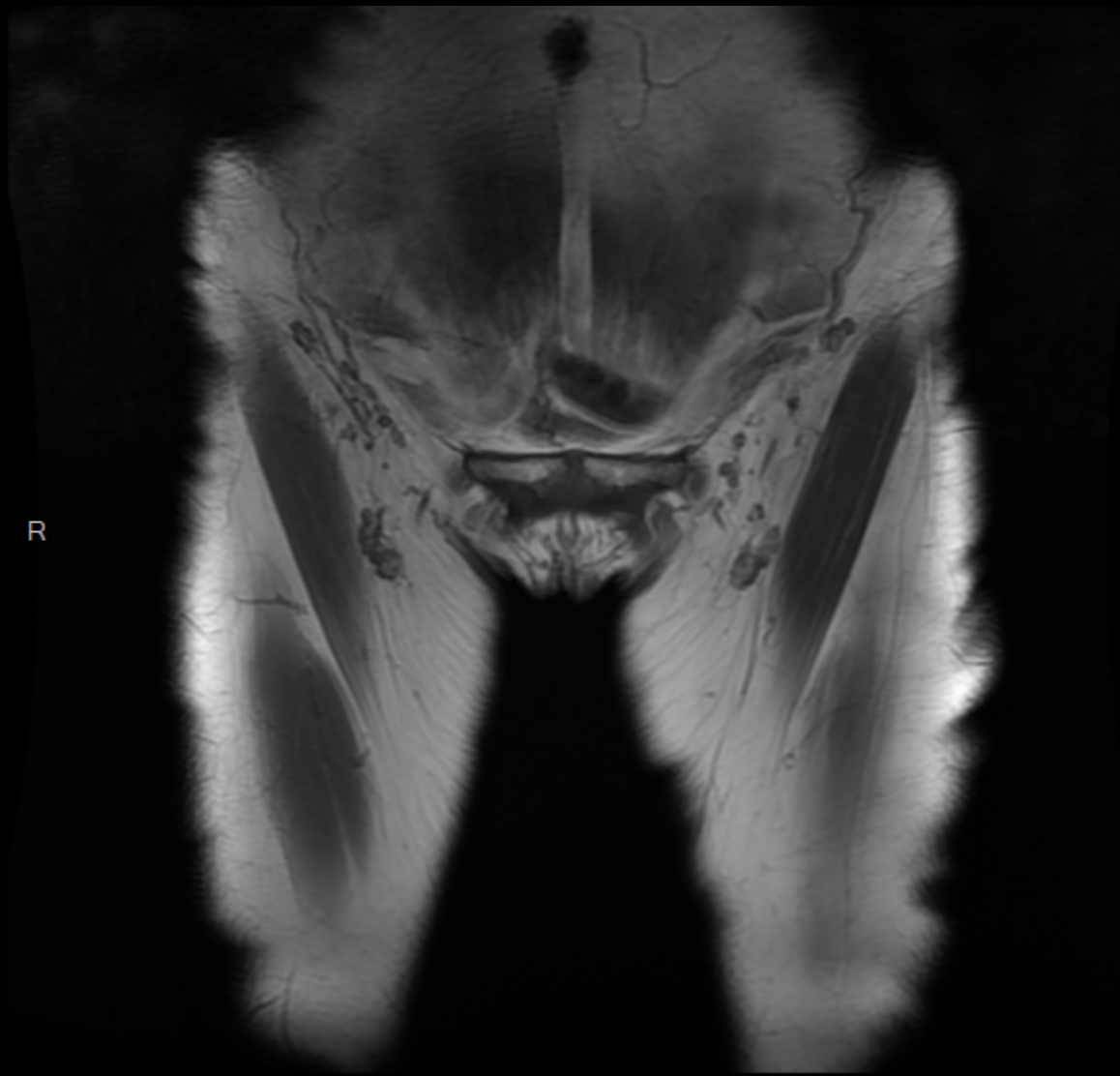
Biologie : RAS hormis CRP à 44

Rx poignet et bassin.

IRM bassin.

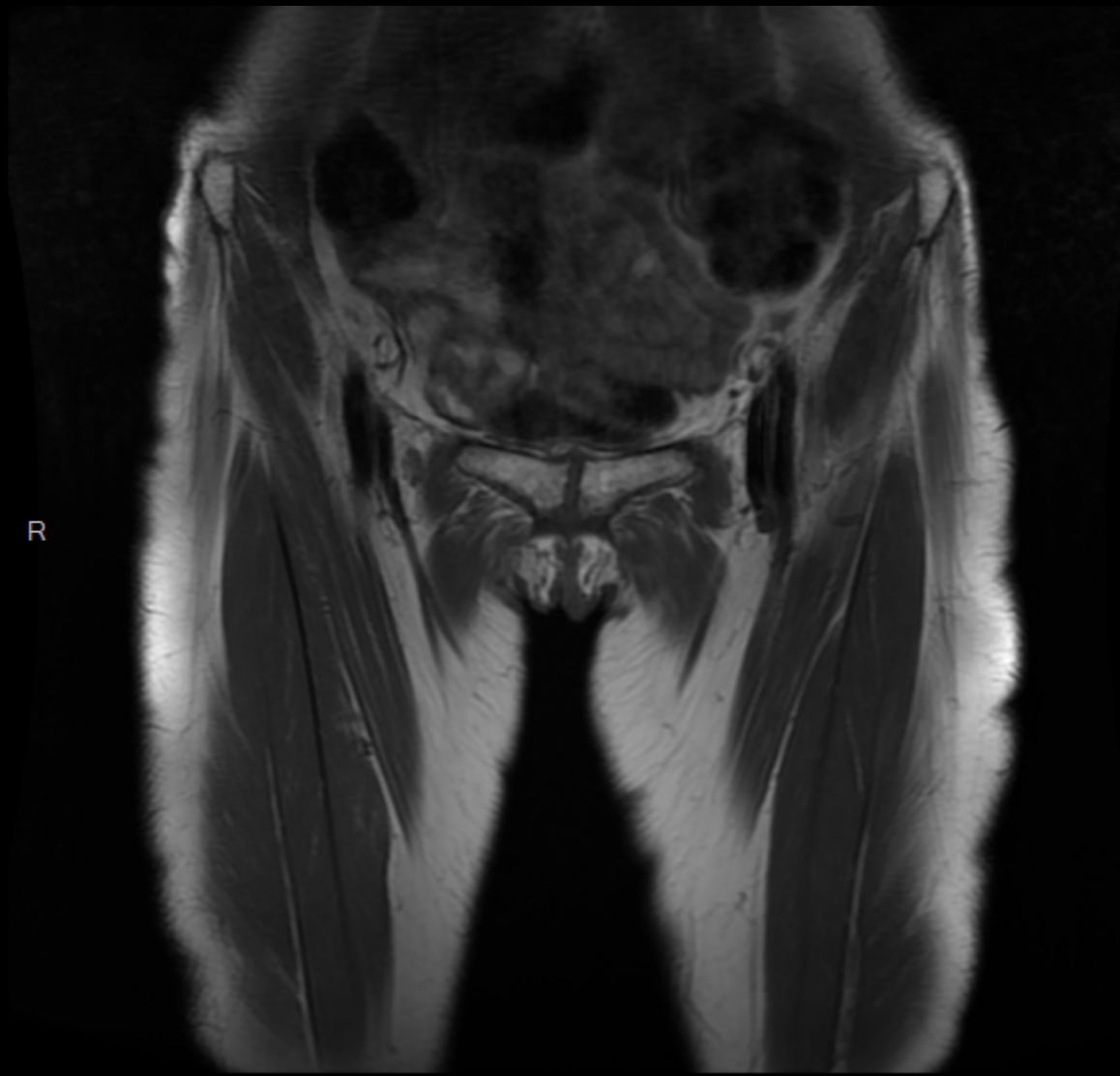






R

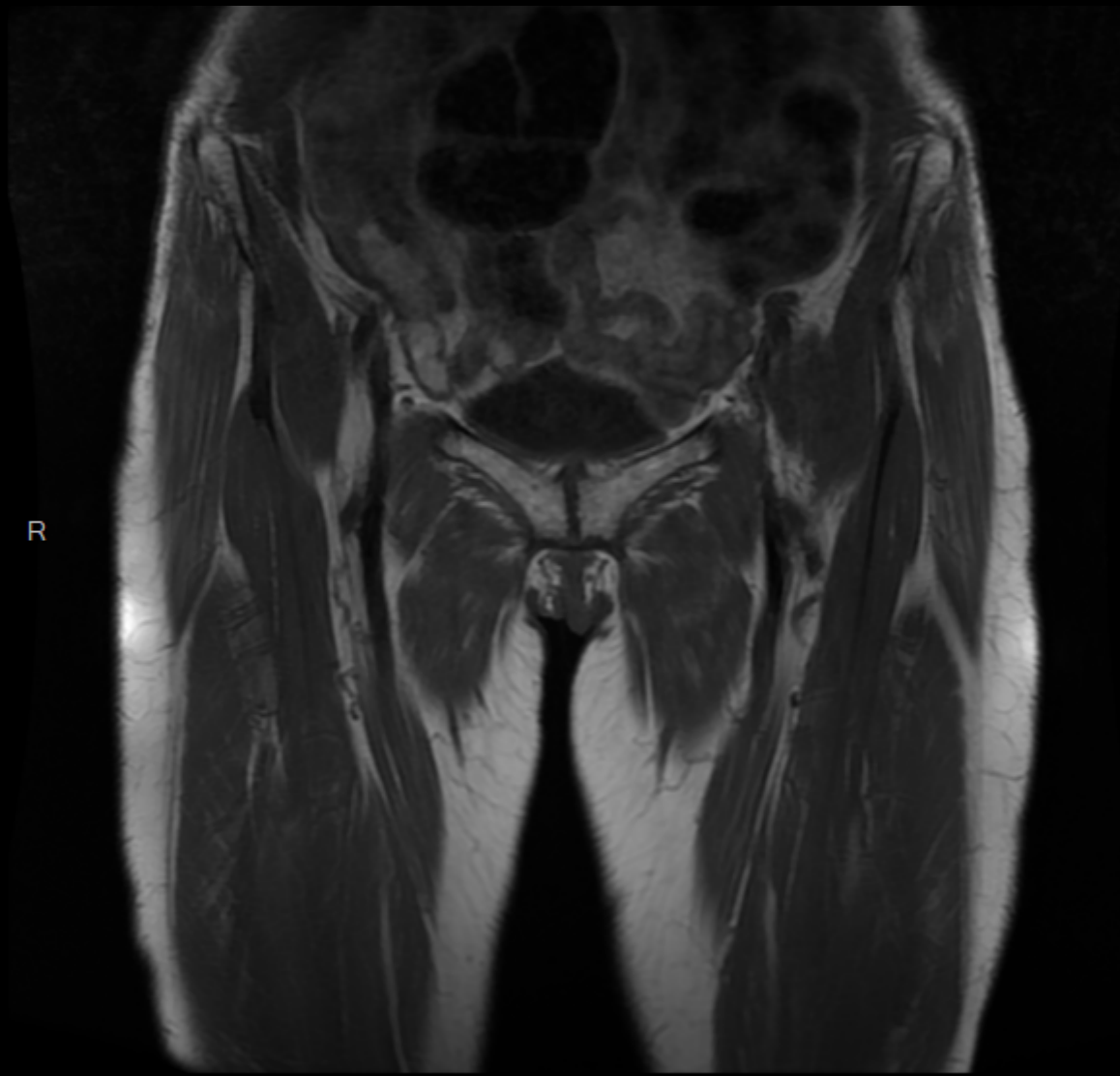
SE T1



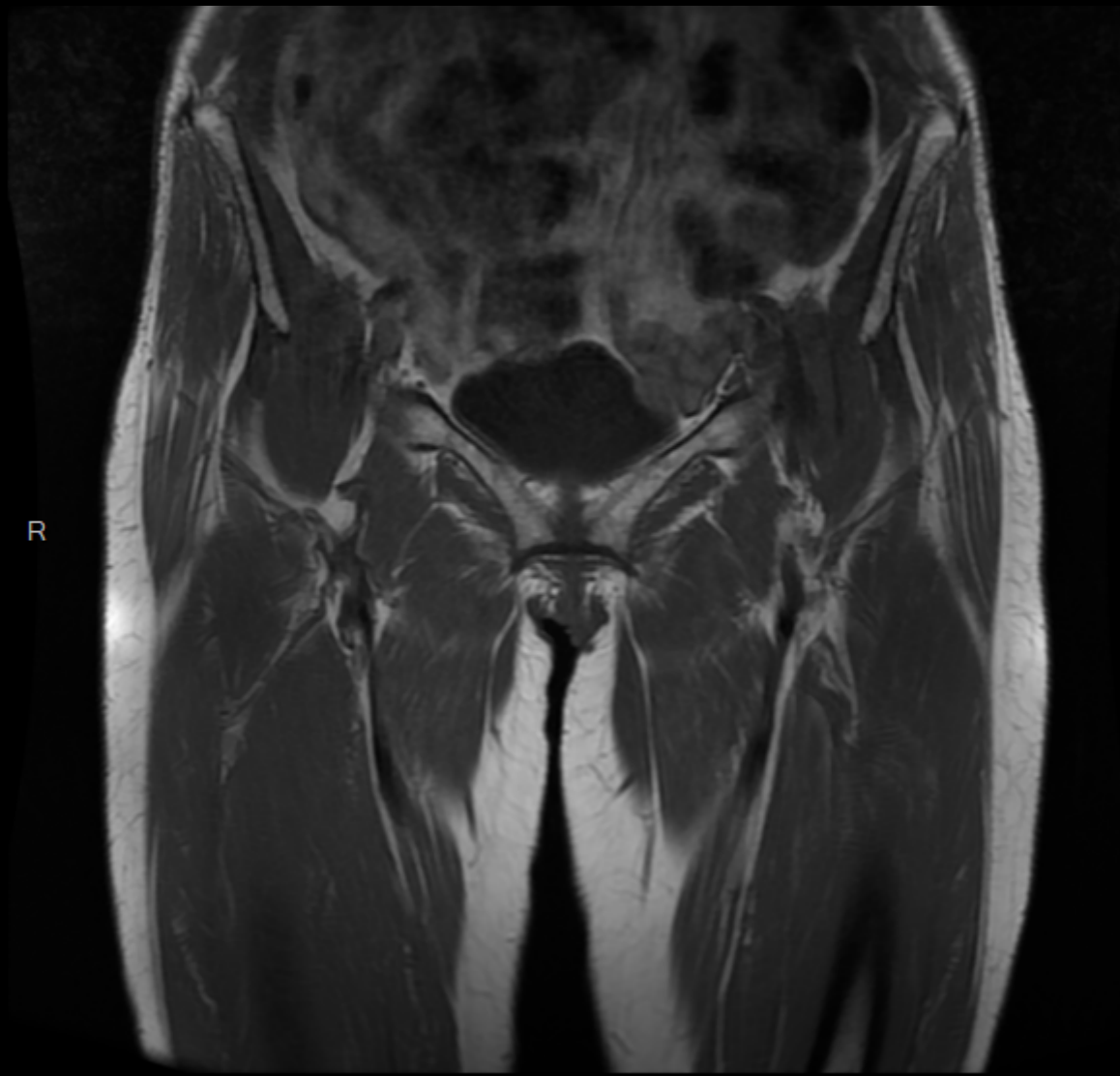
R

SE T1

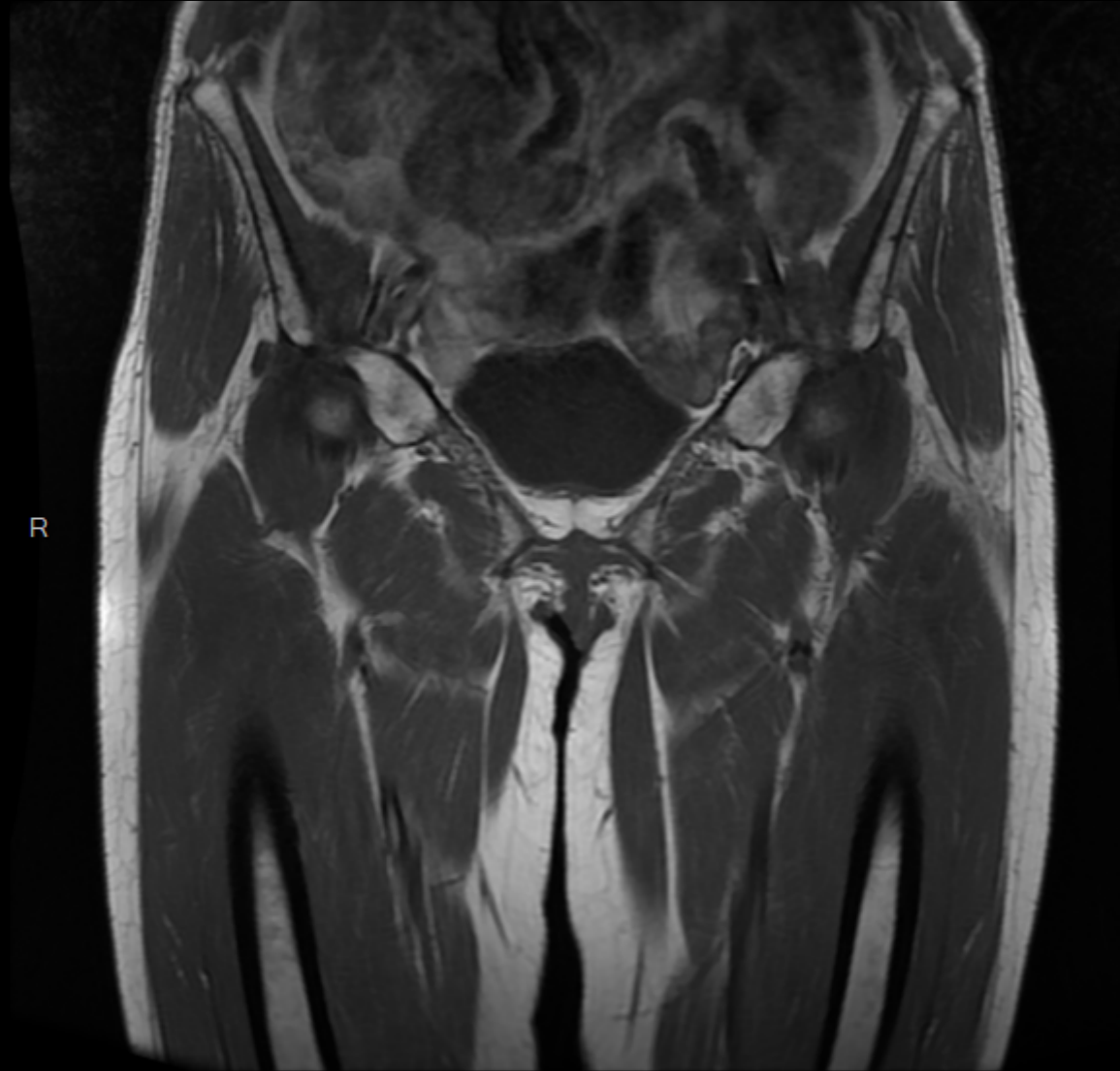
I



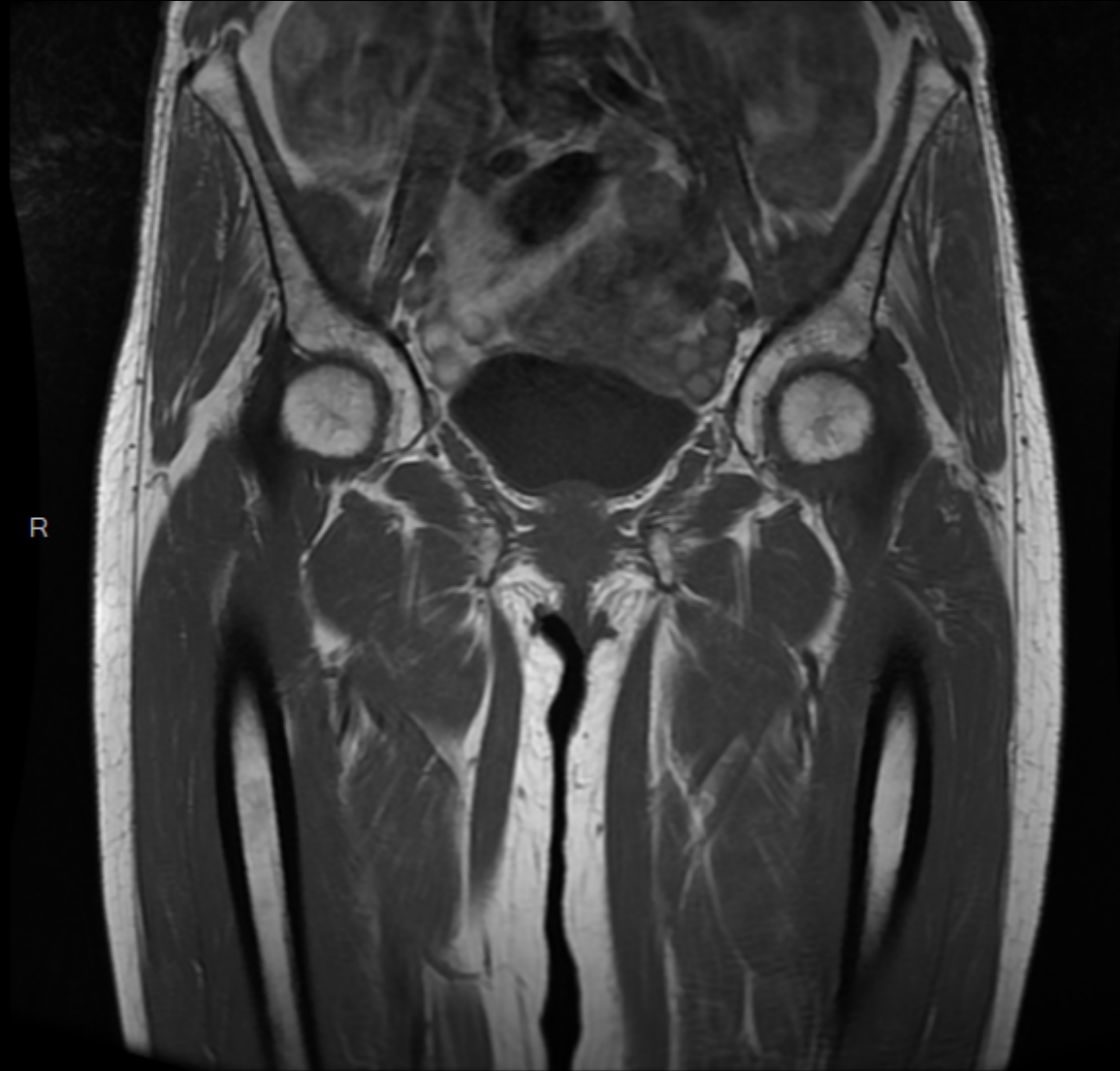
SE T1



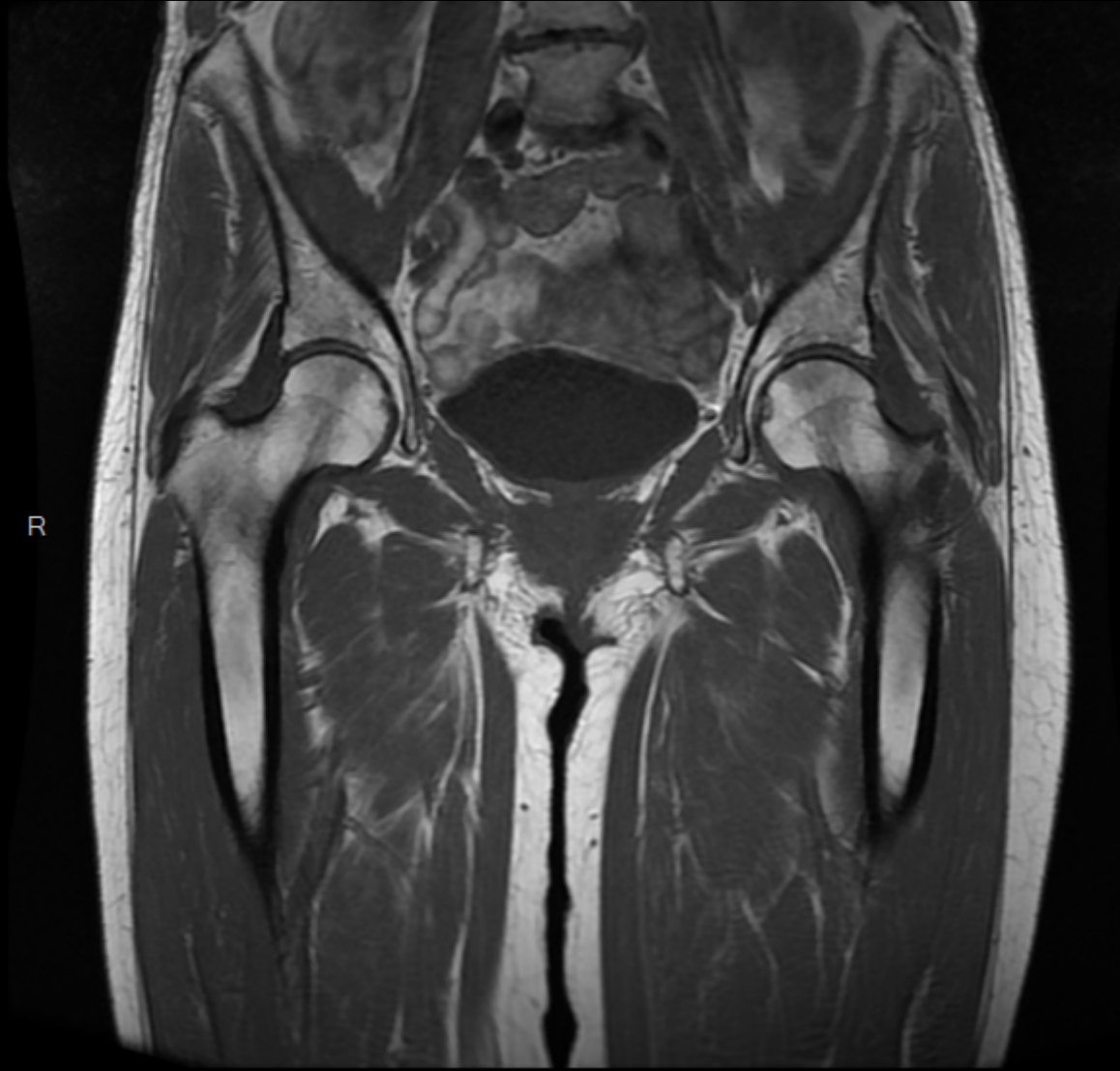
SE T1



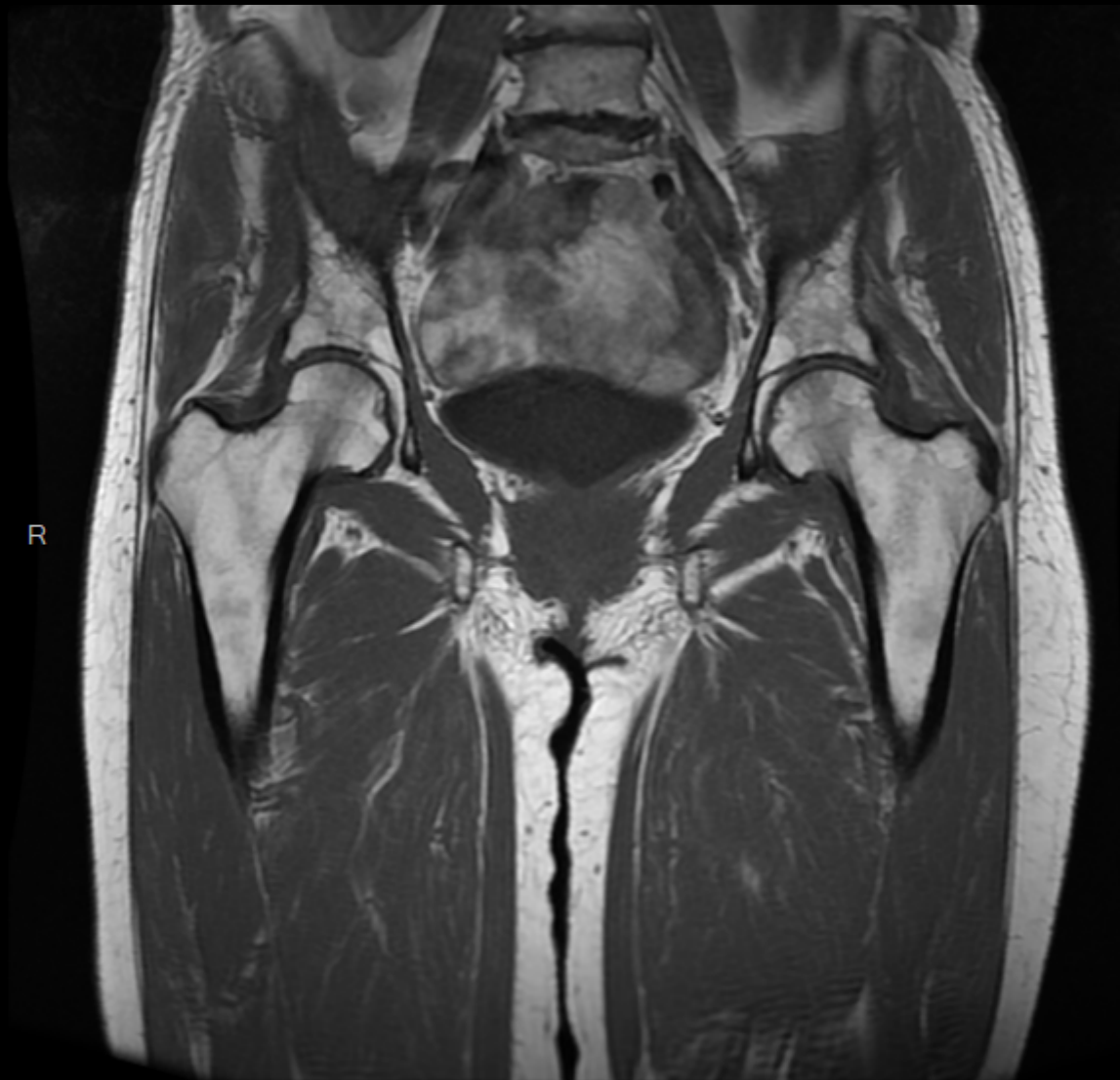
SE T1



SE T1



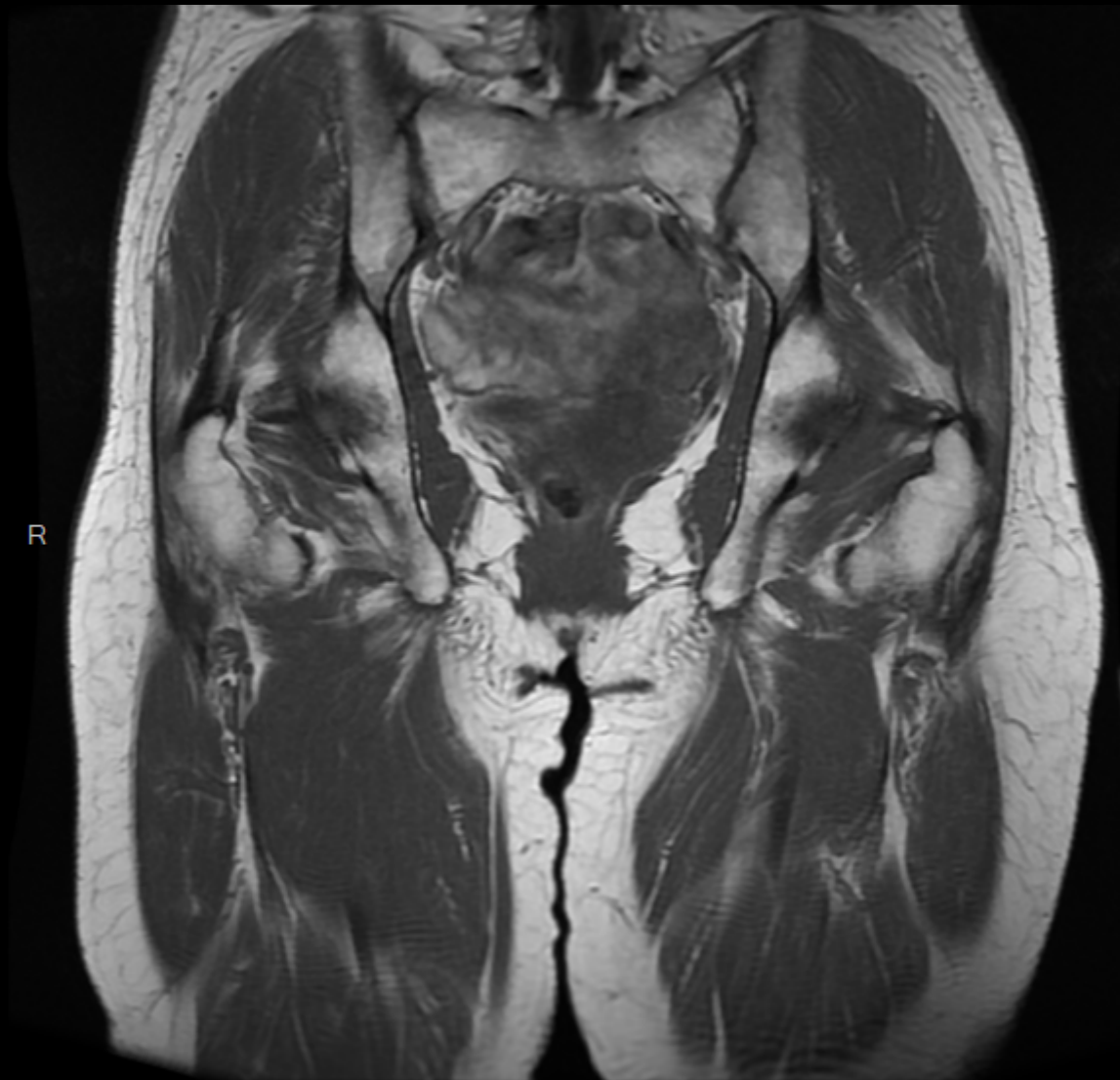
SE T1



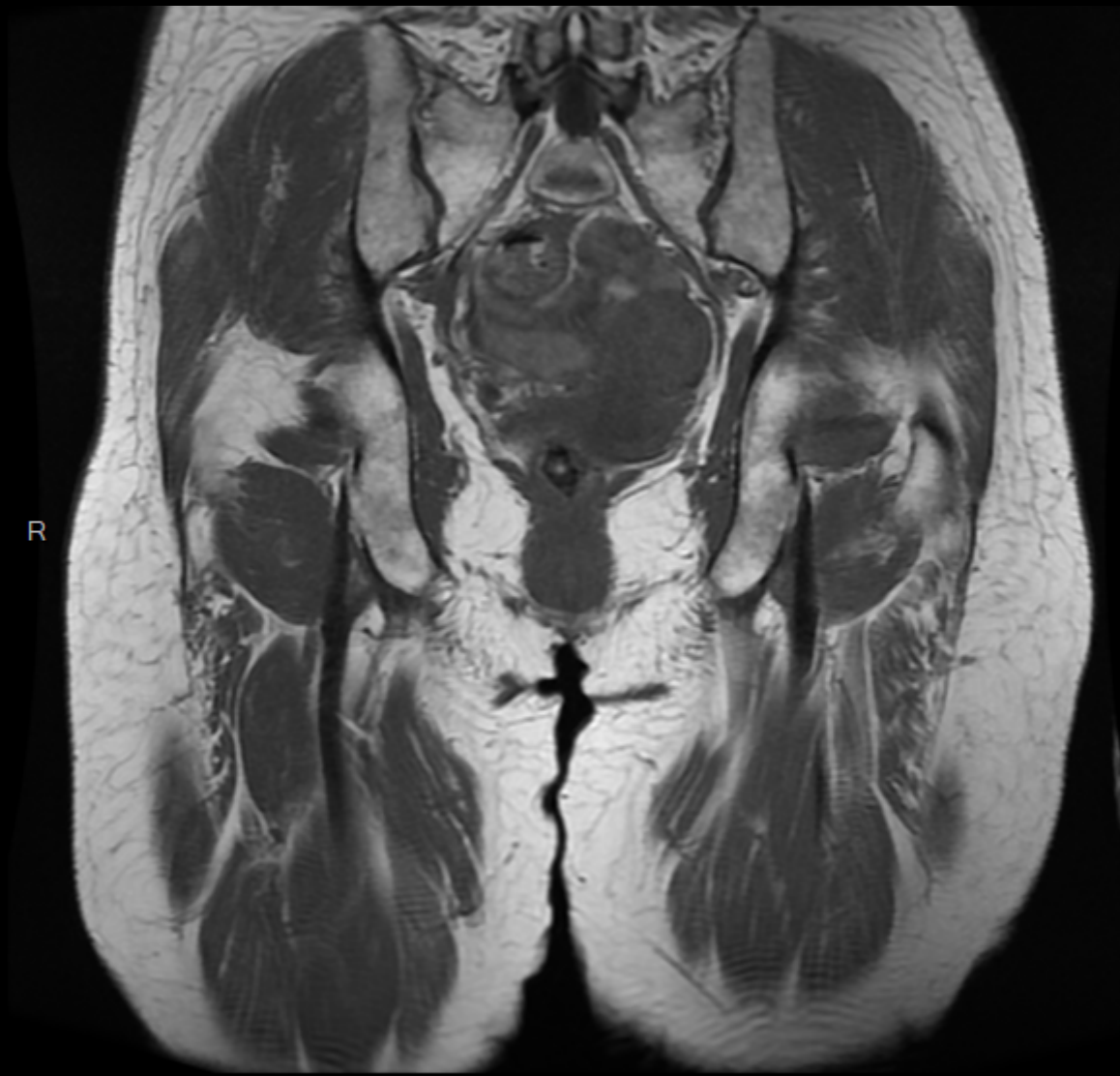
SE T1



SE T1



SE T1

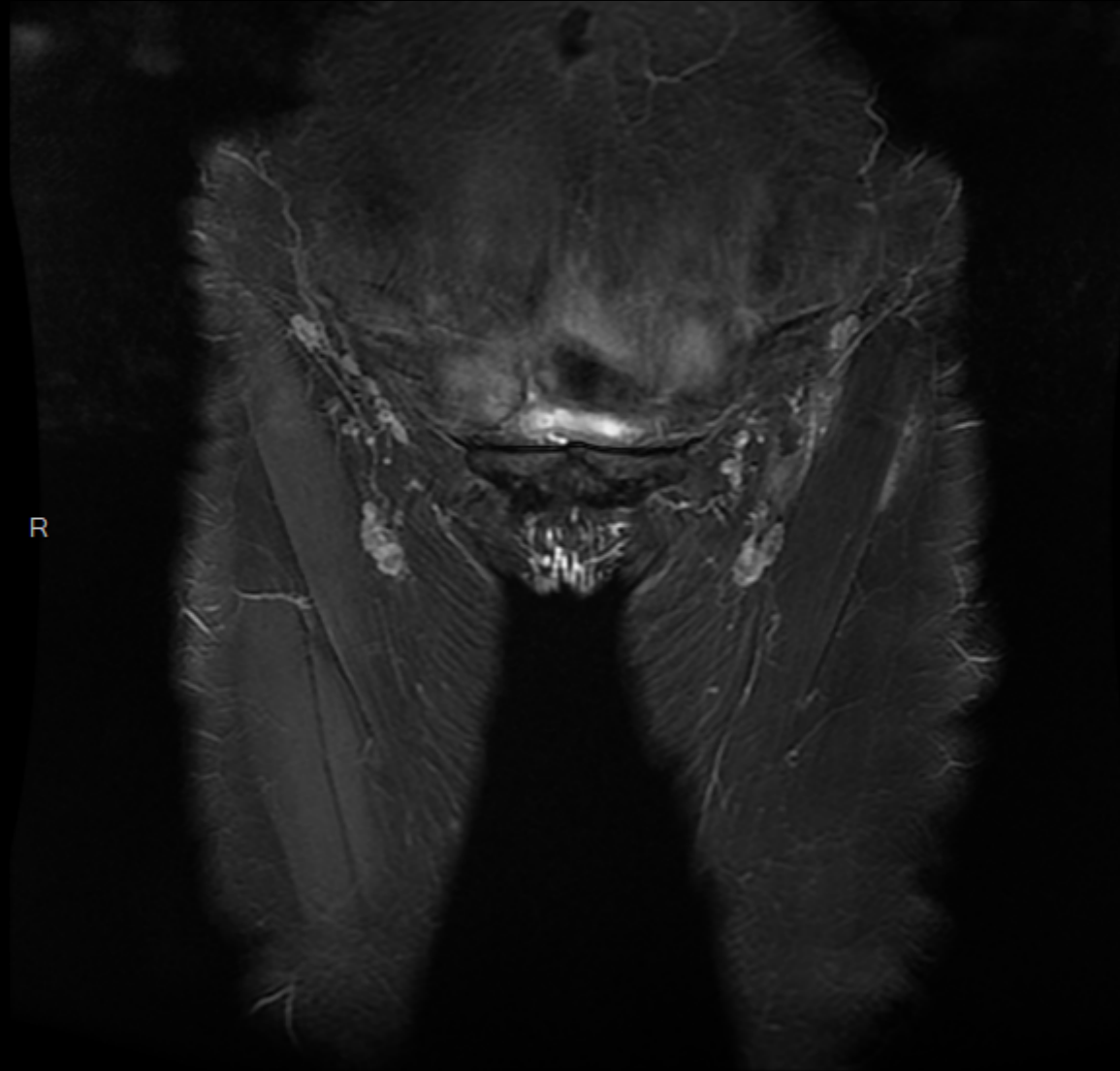


R

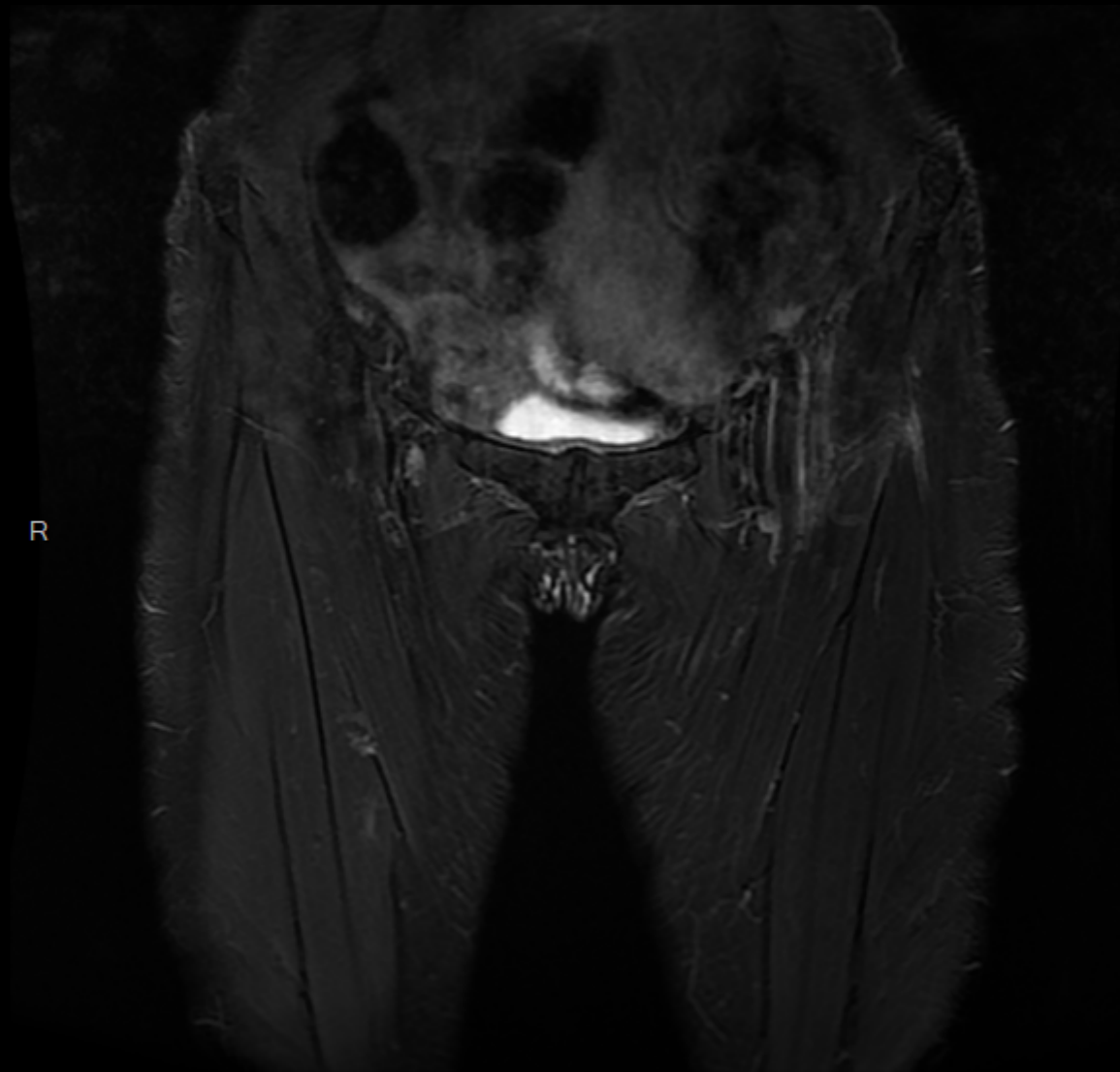
SE T1



SE T1



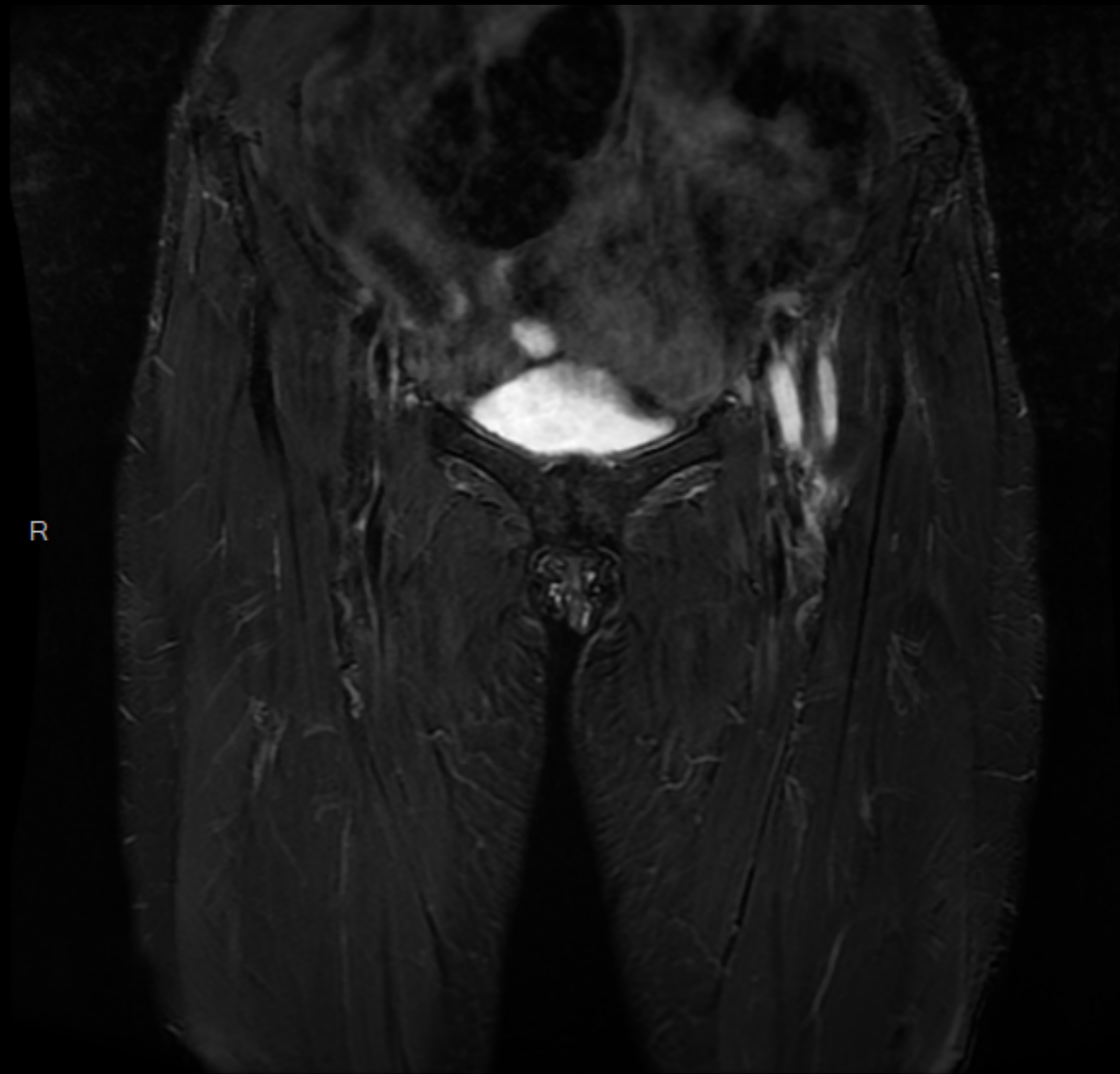
DP fs



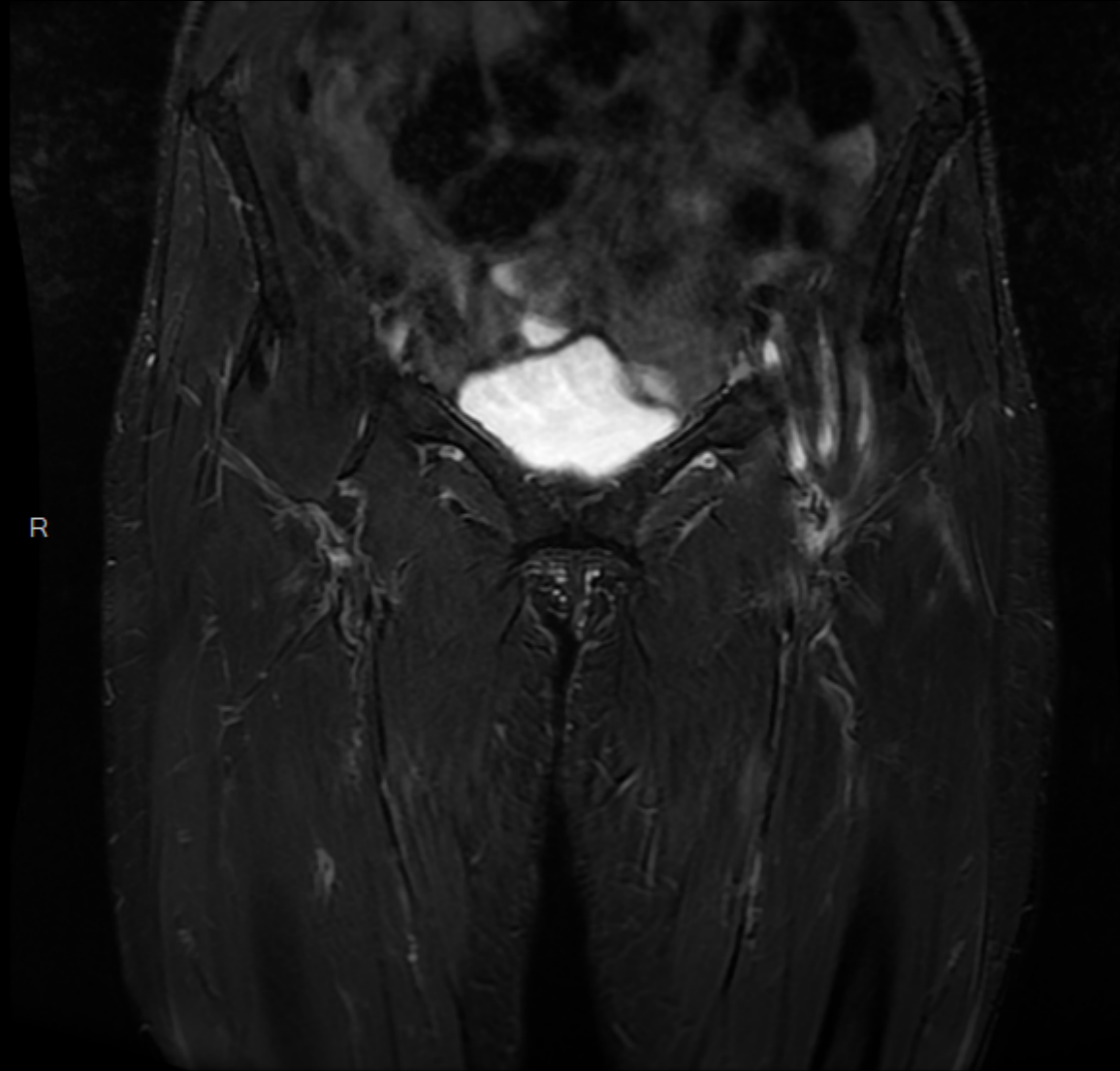
R

DP fs

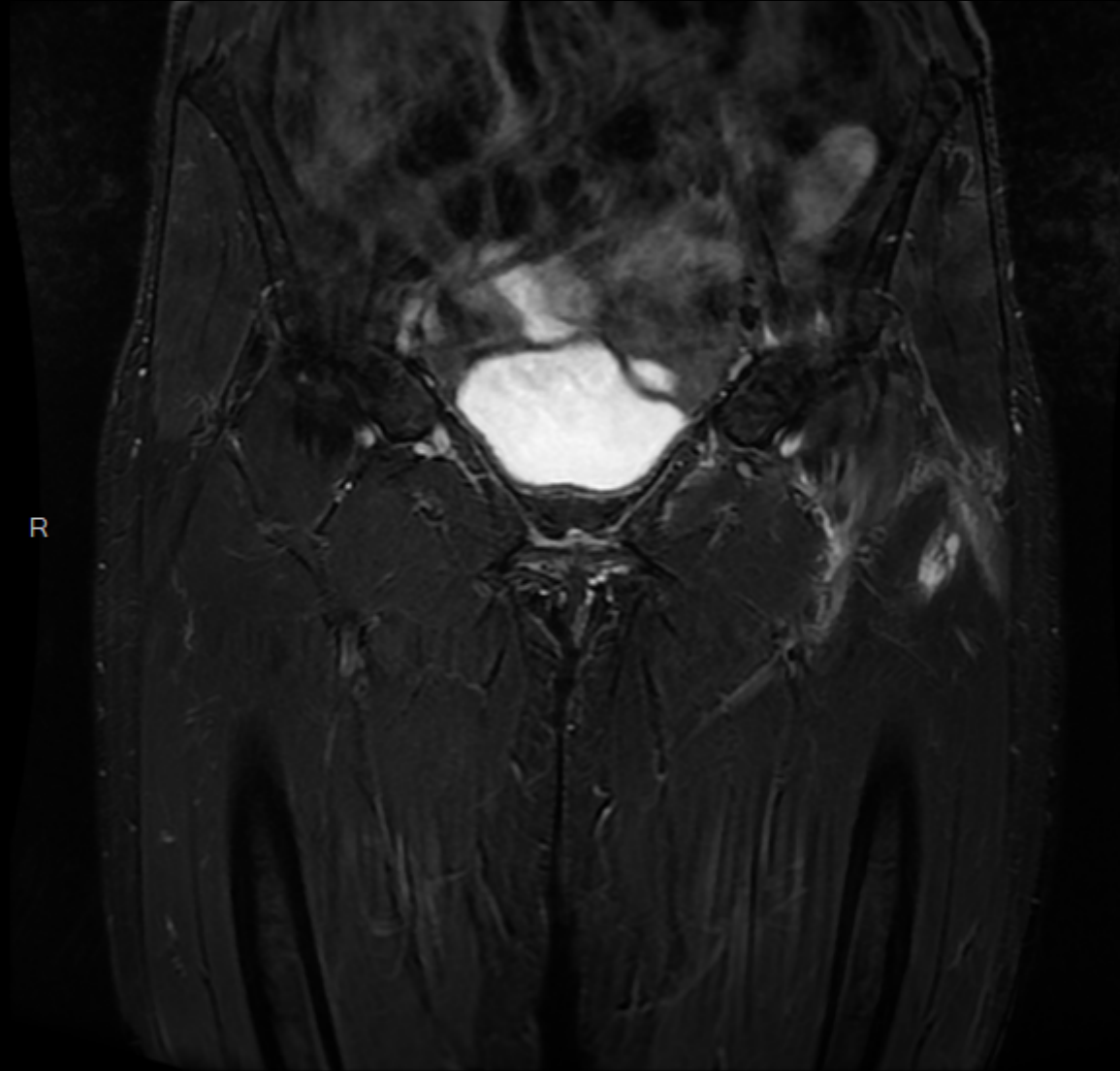
I



DP fs

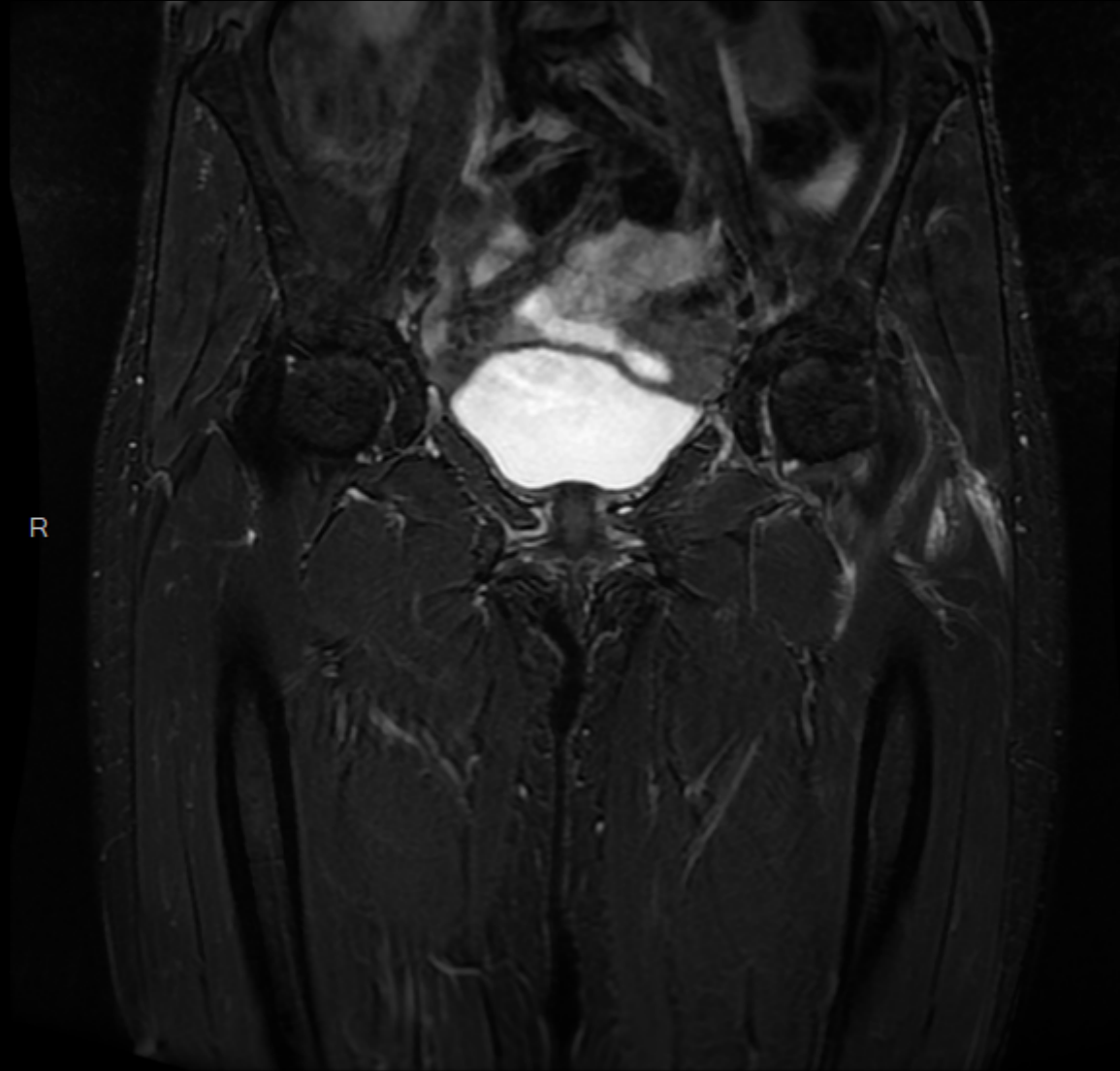


DP fs



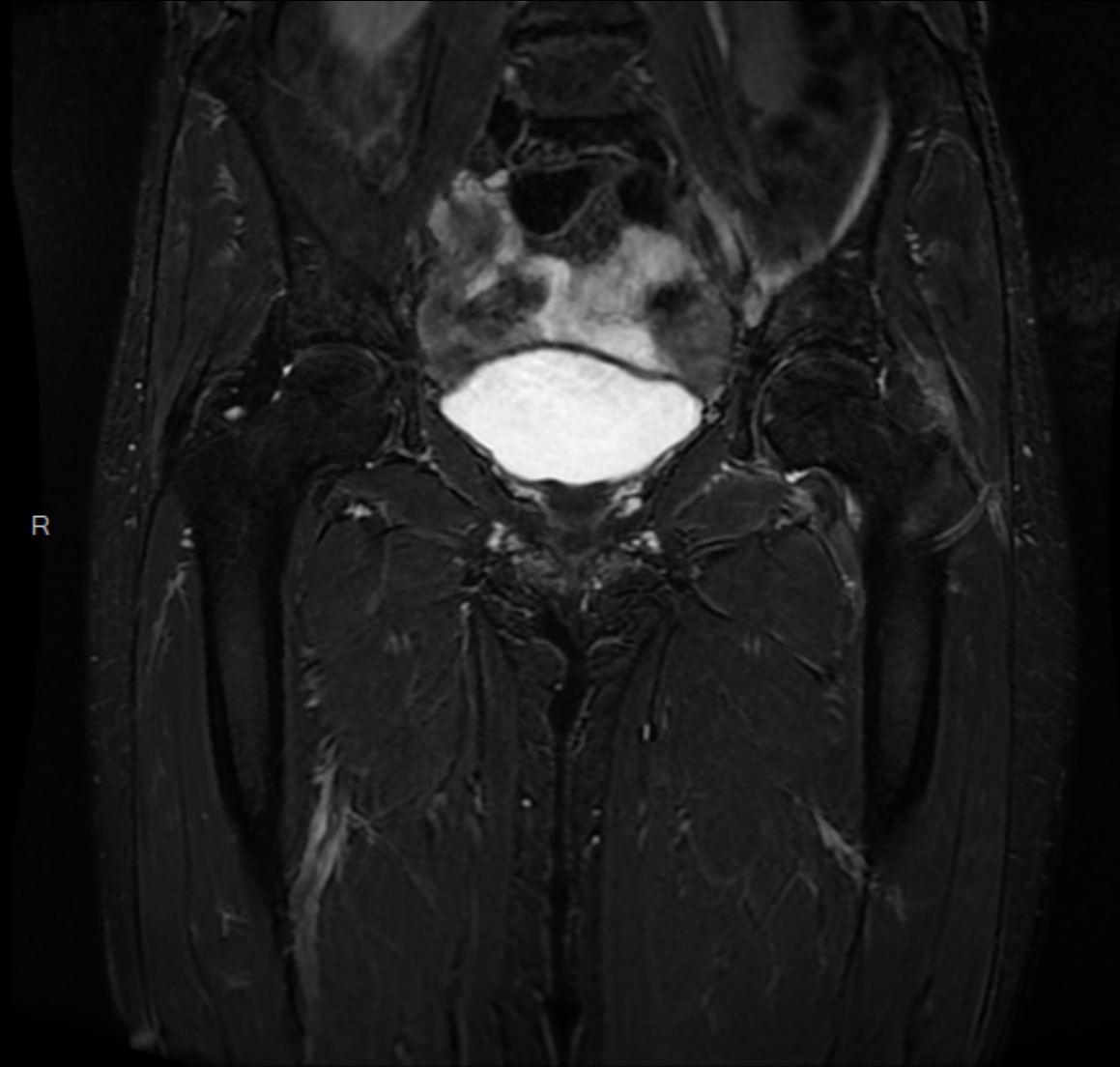
R

DP fs



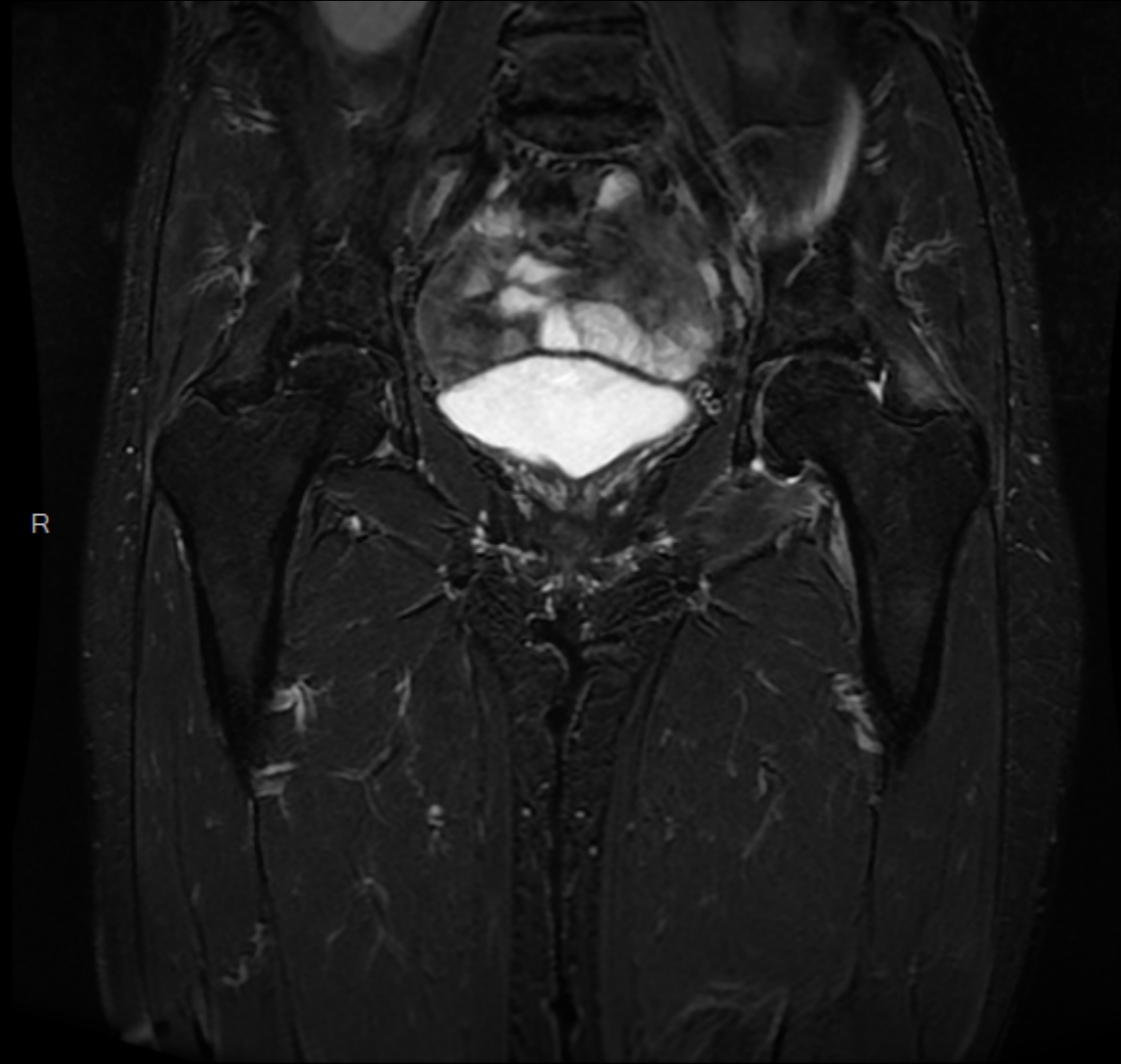
R

DP fs

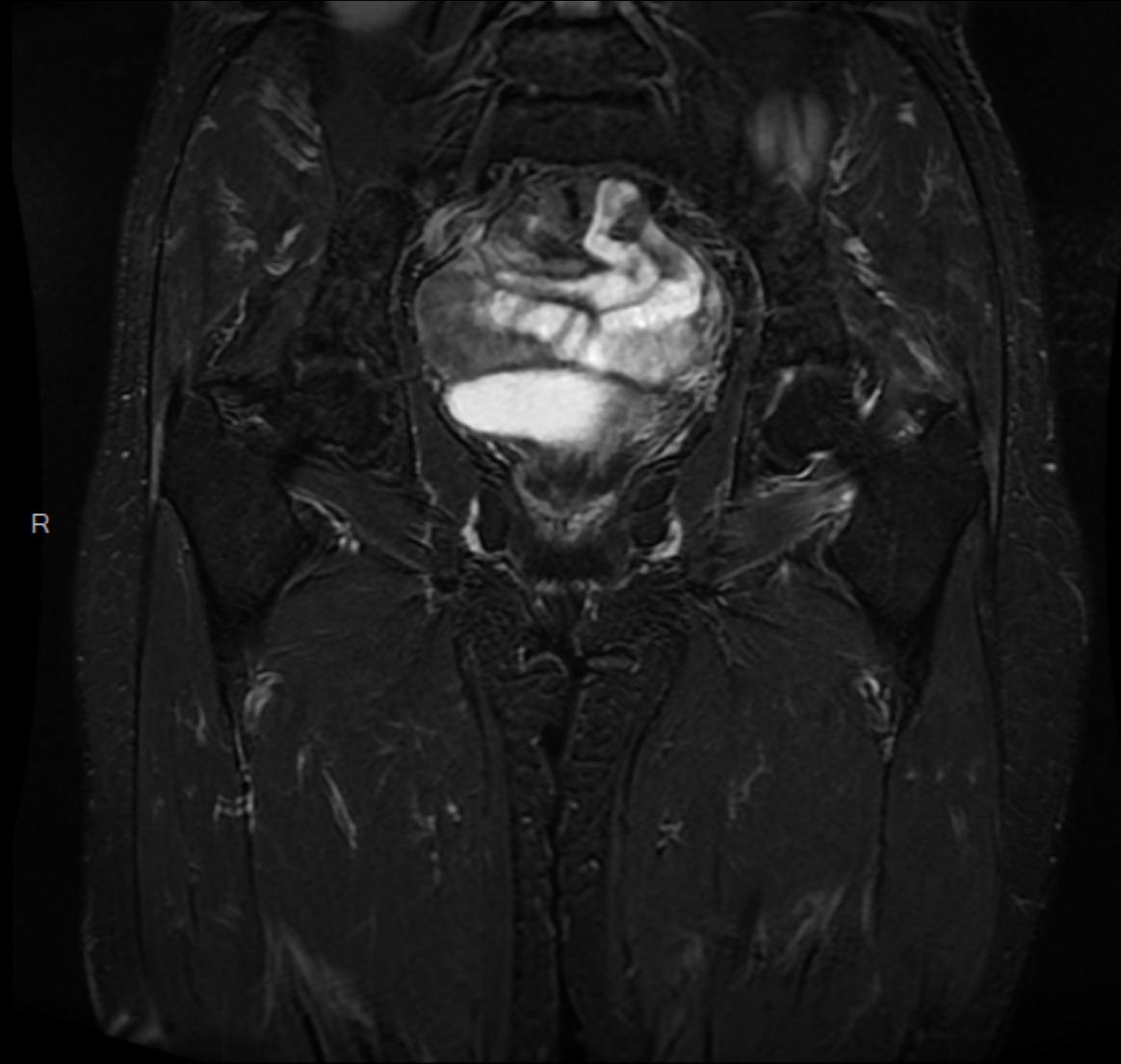


R

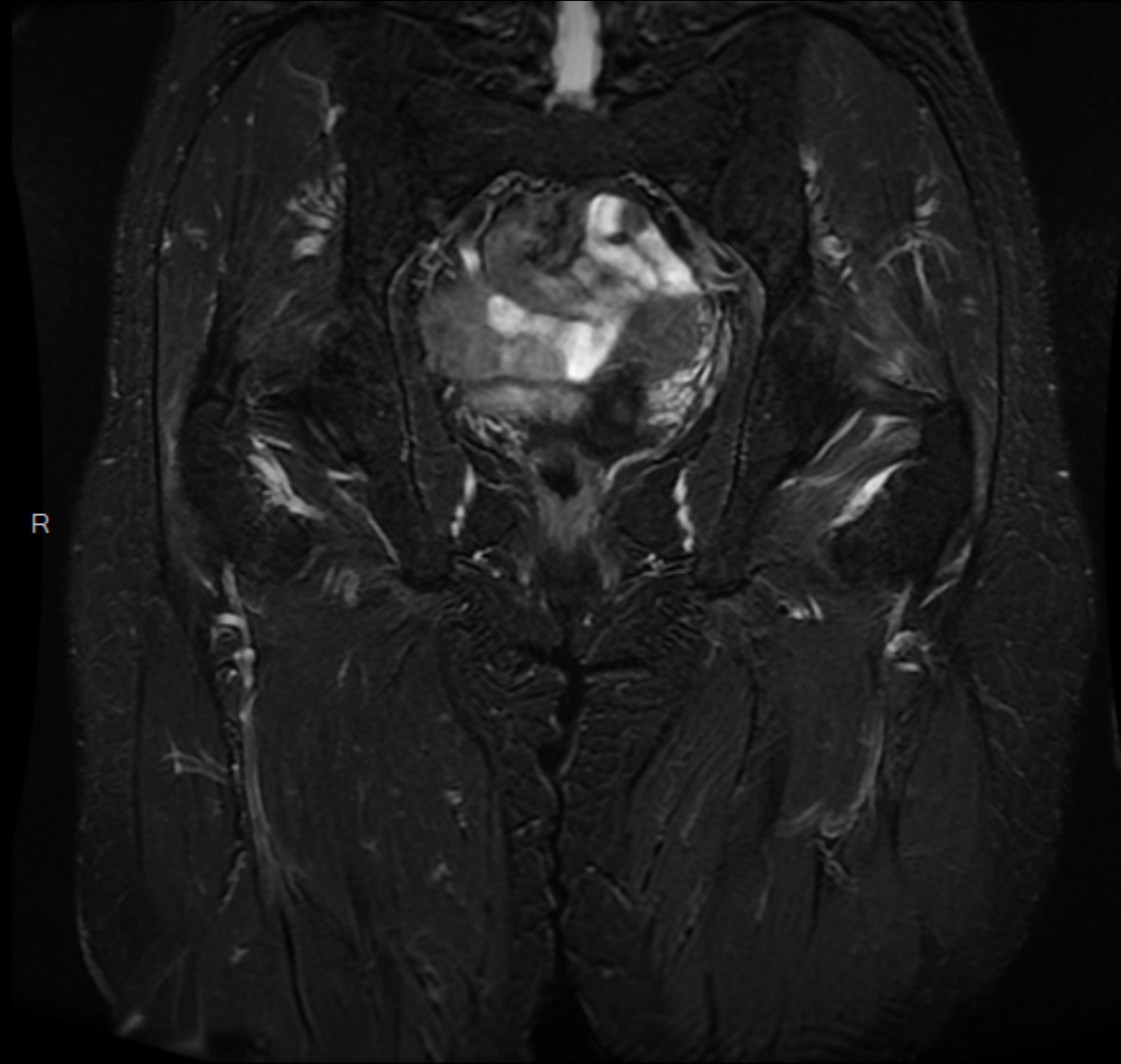
DP fs



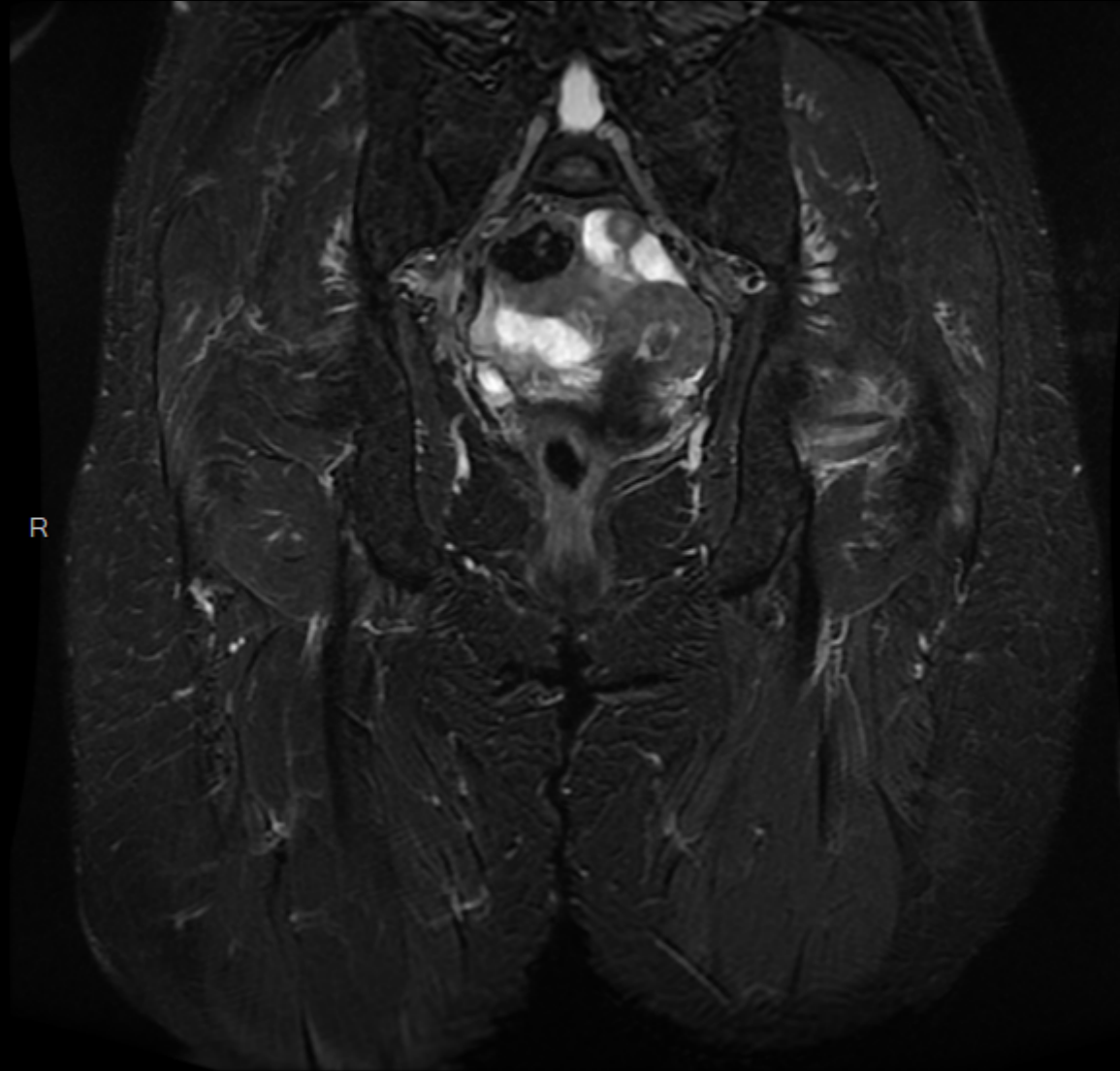
DP fs



DP fs

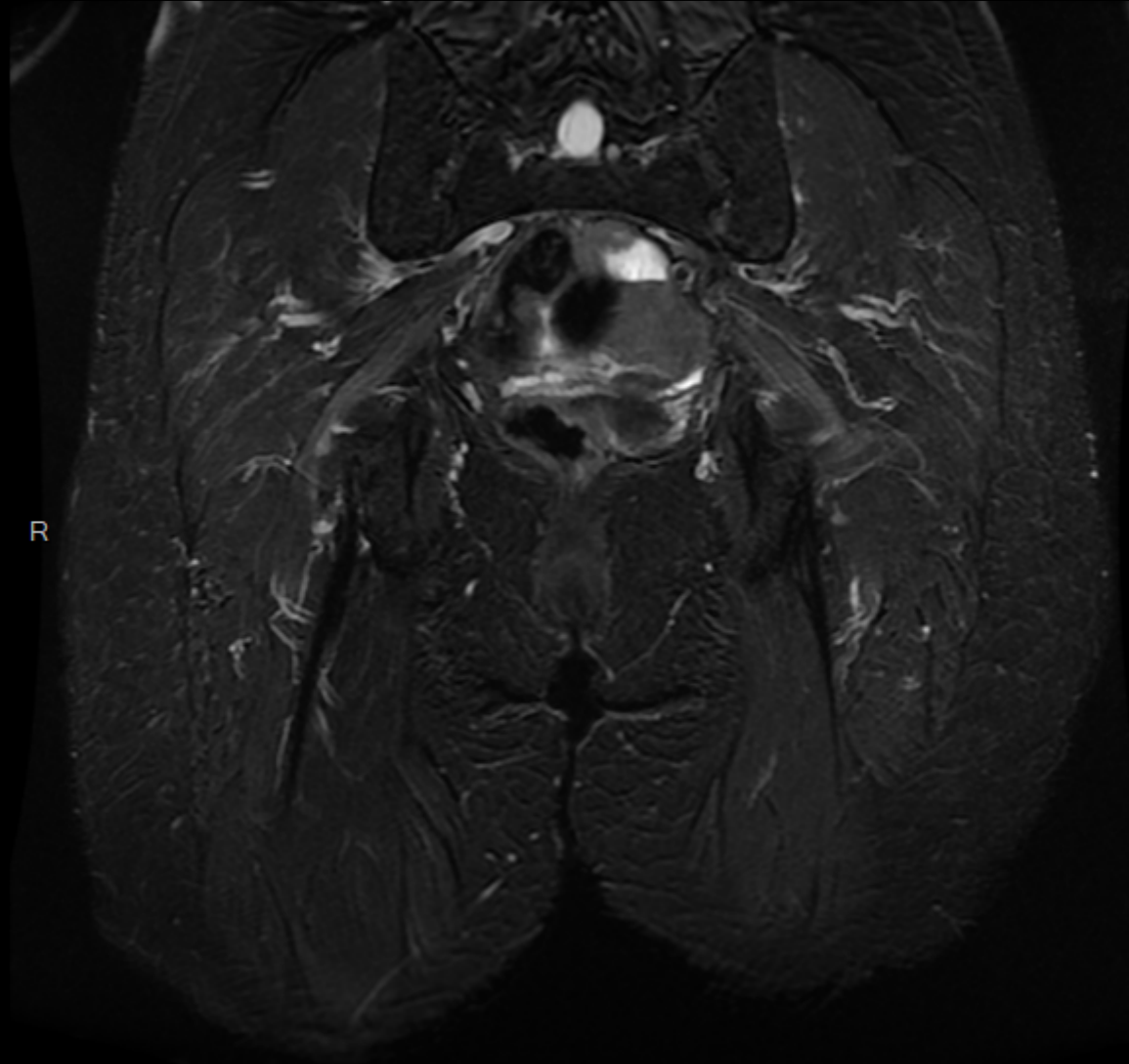


DP fs

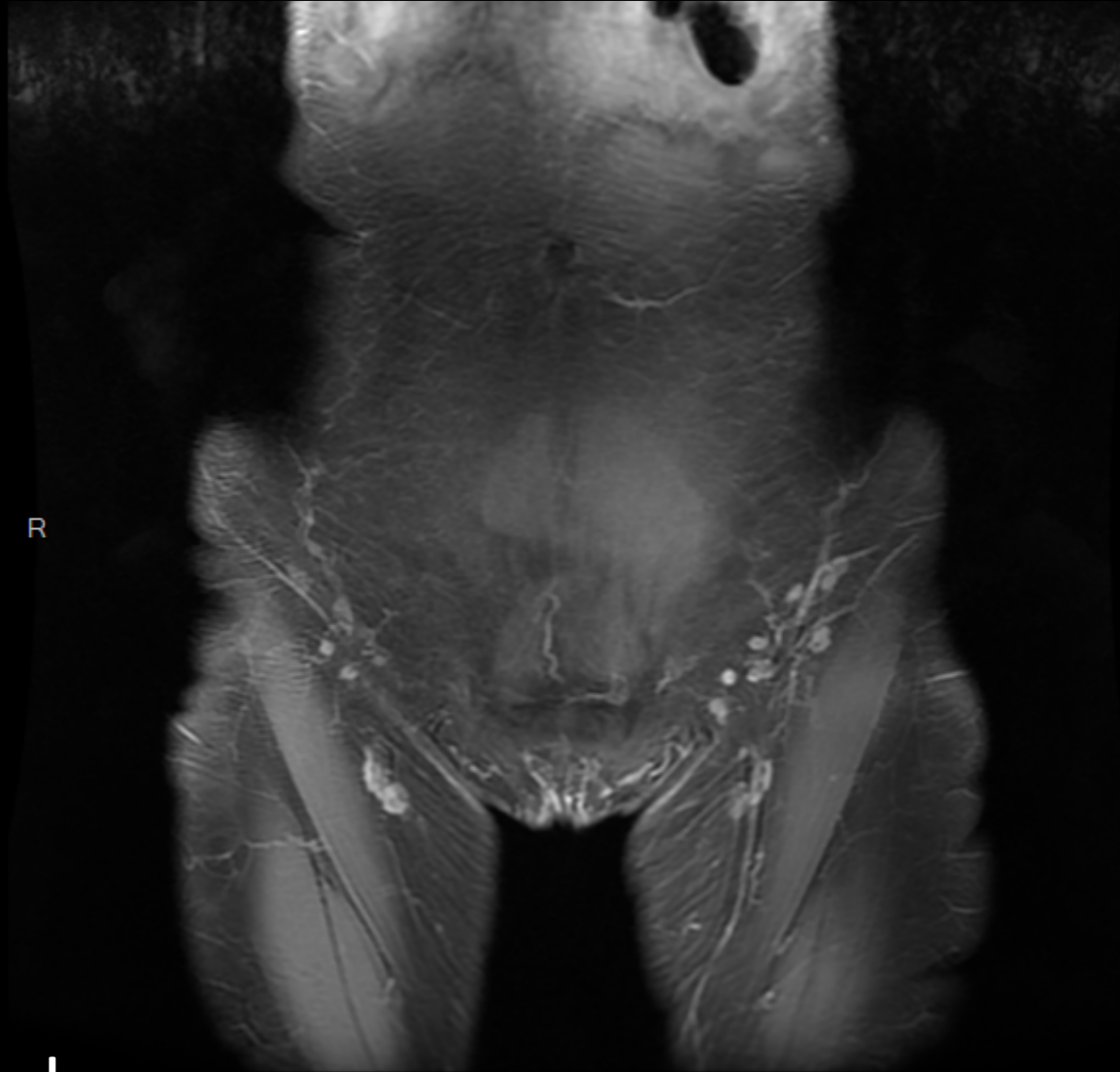


R

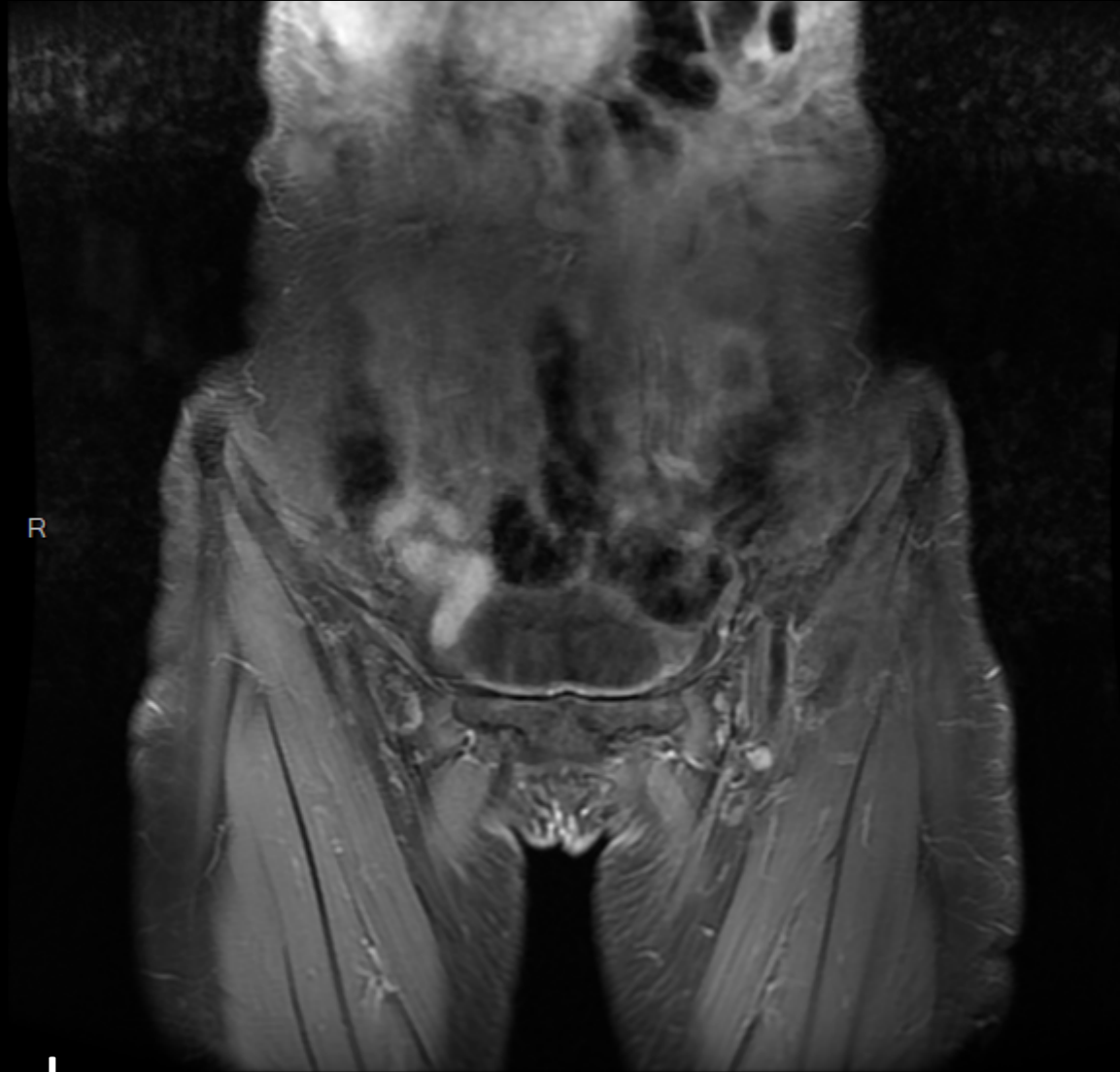
DP fs



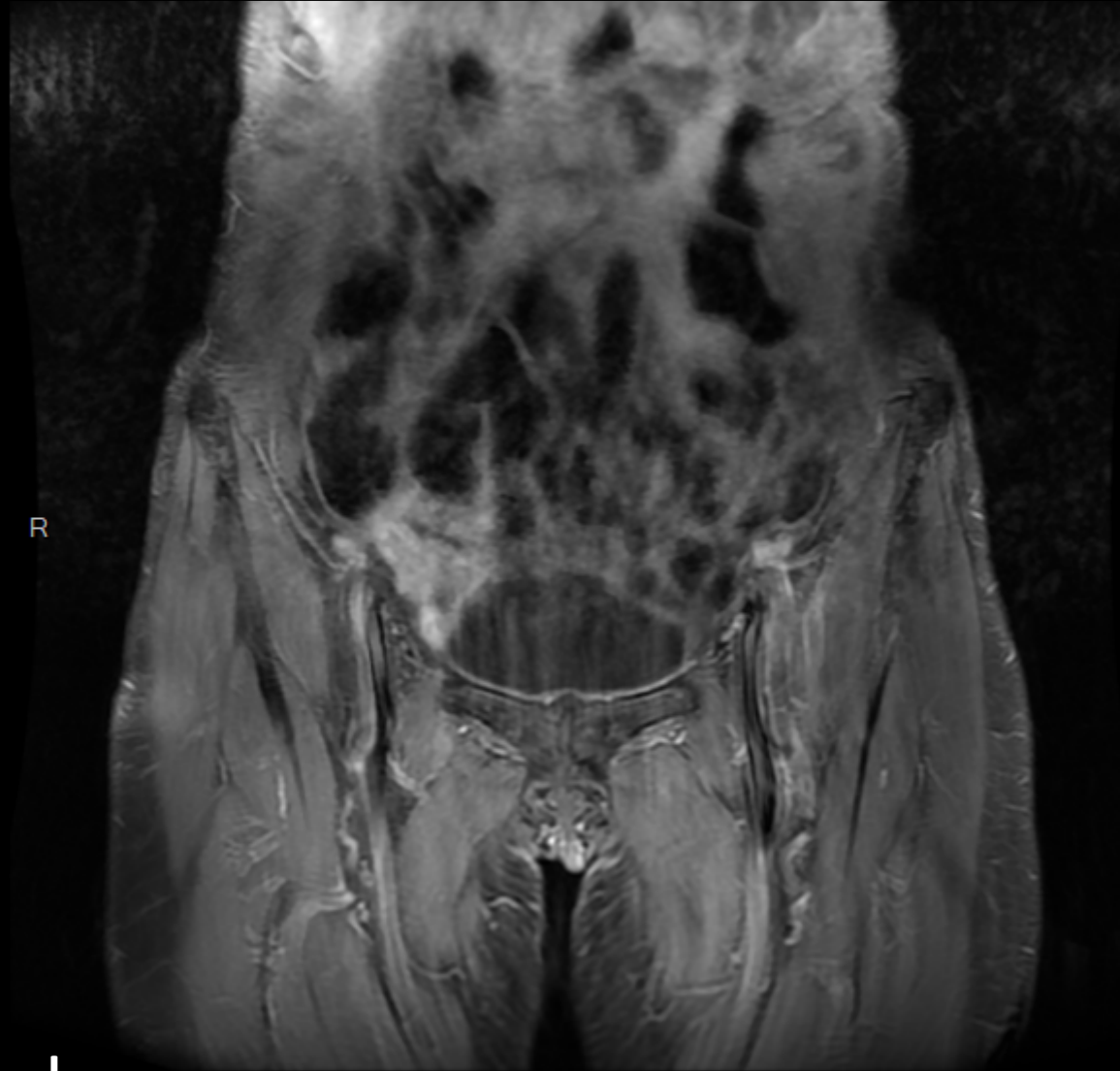
DP fs



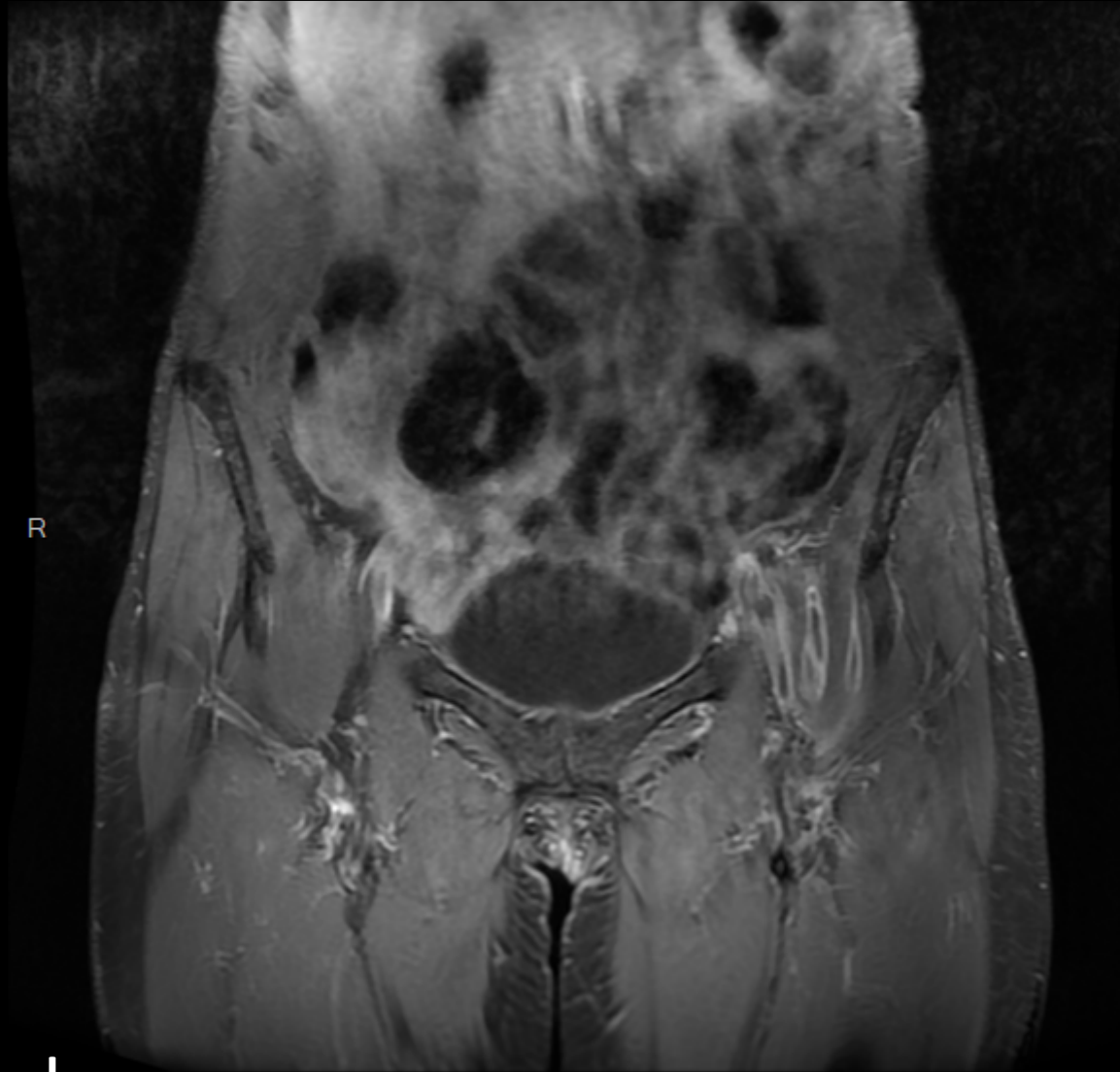
T1 fs Gado



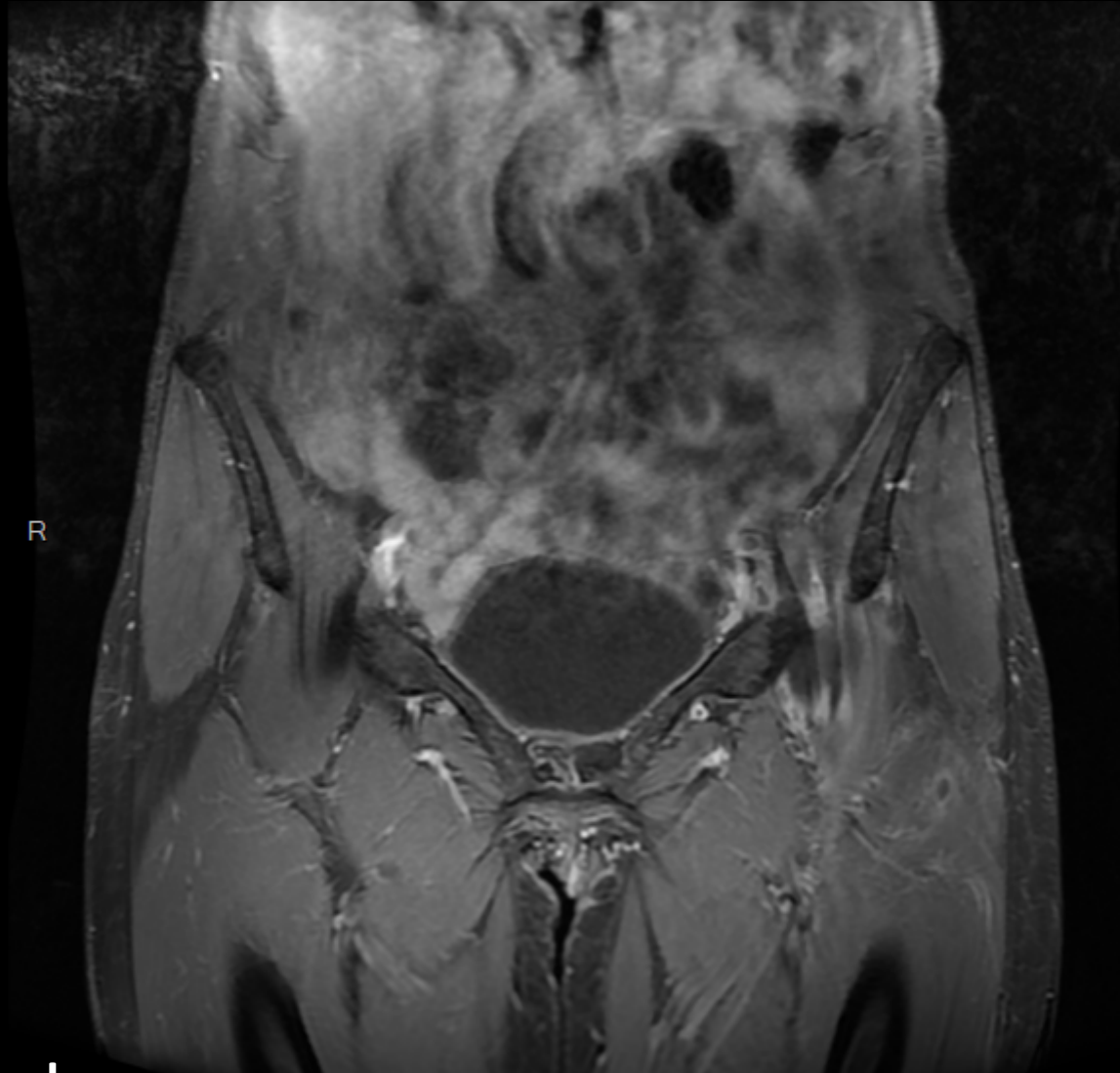
T1 fs Gado



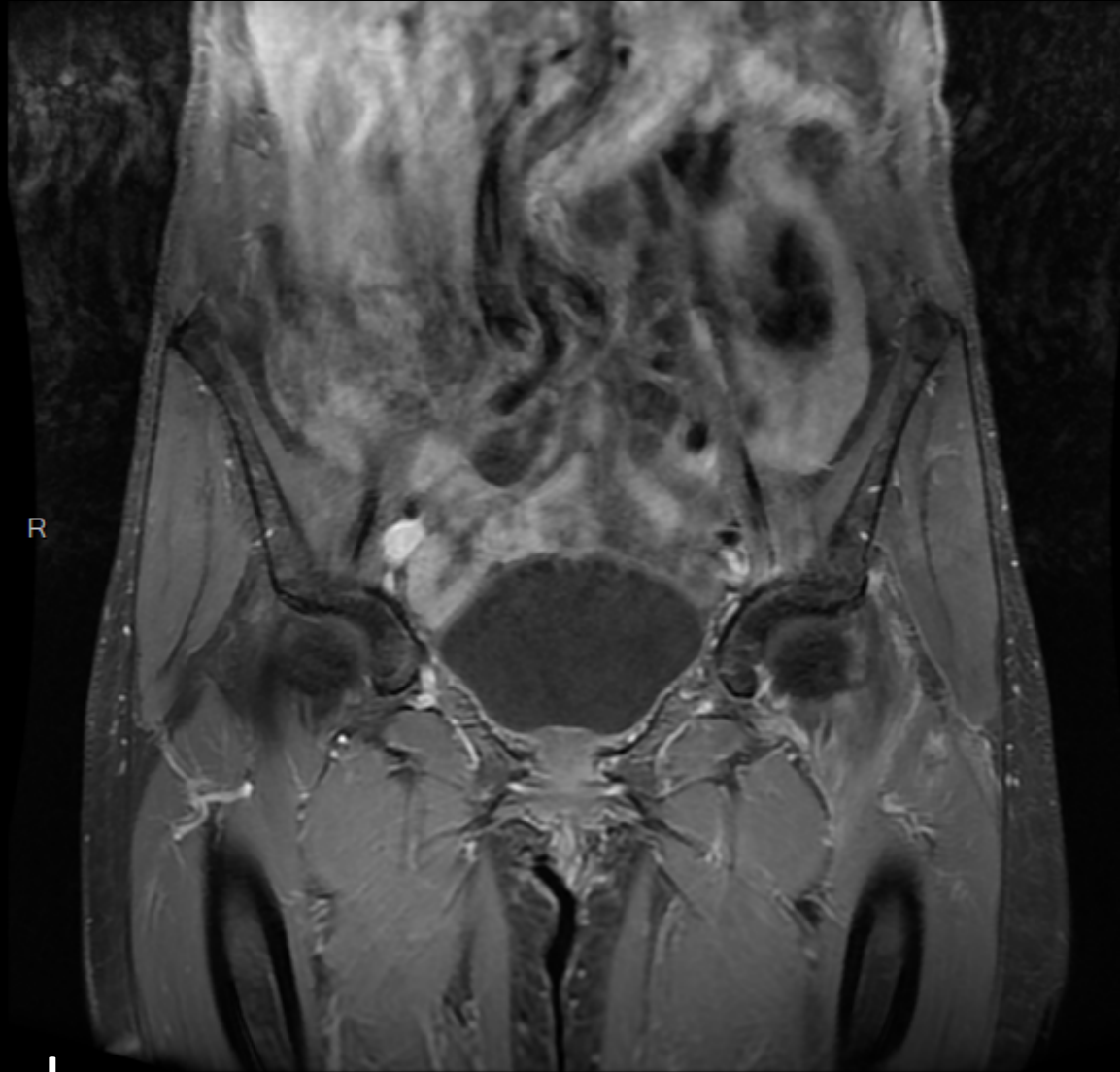
T1 fs Gado



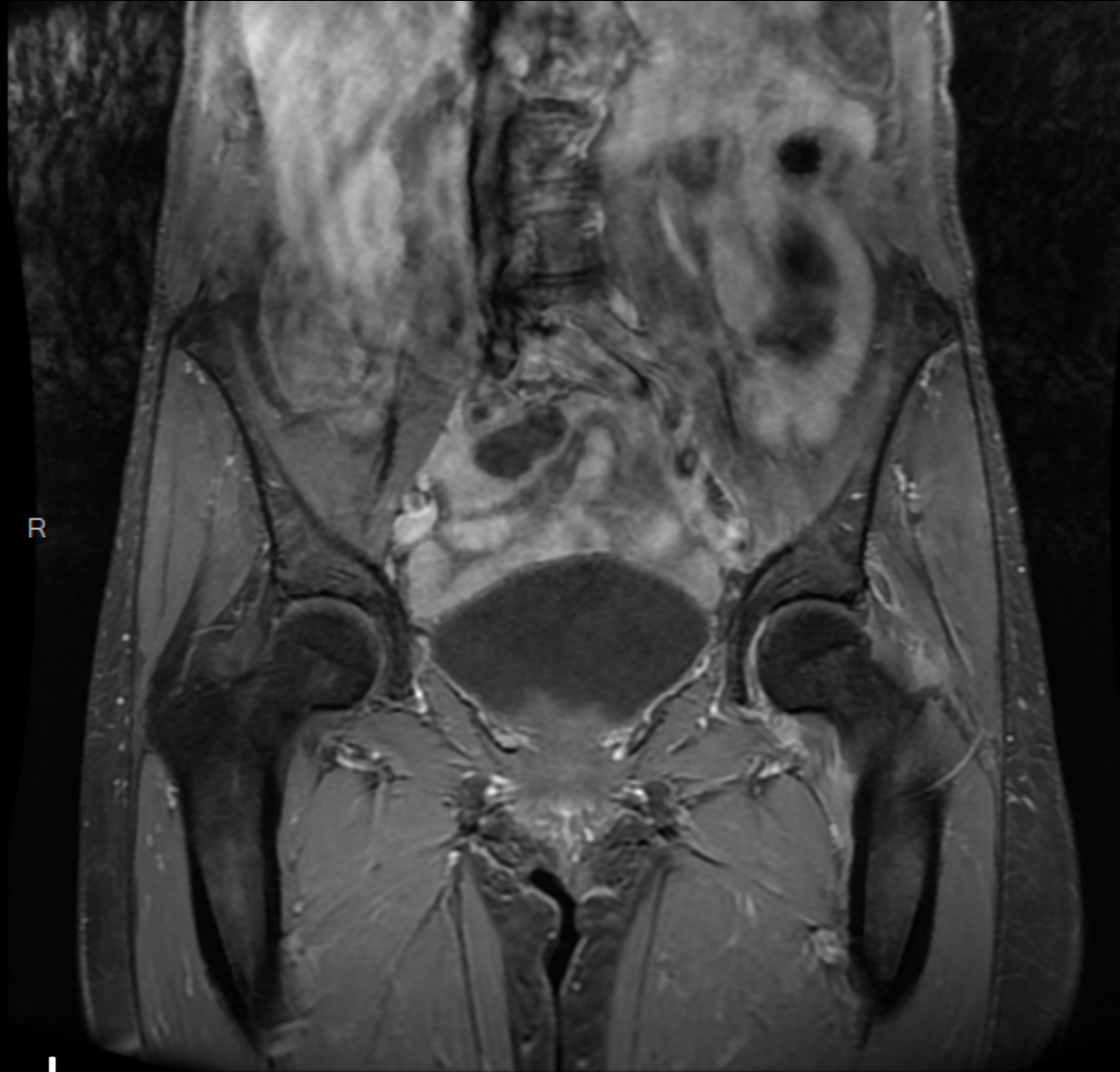
T1 fs Gado



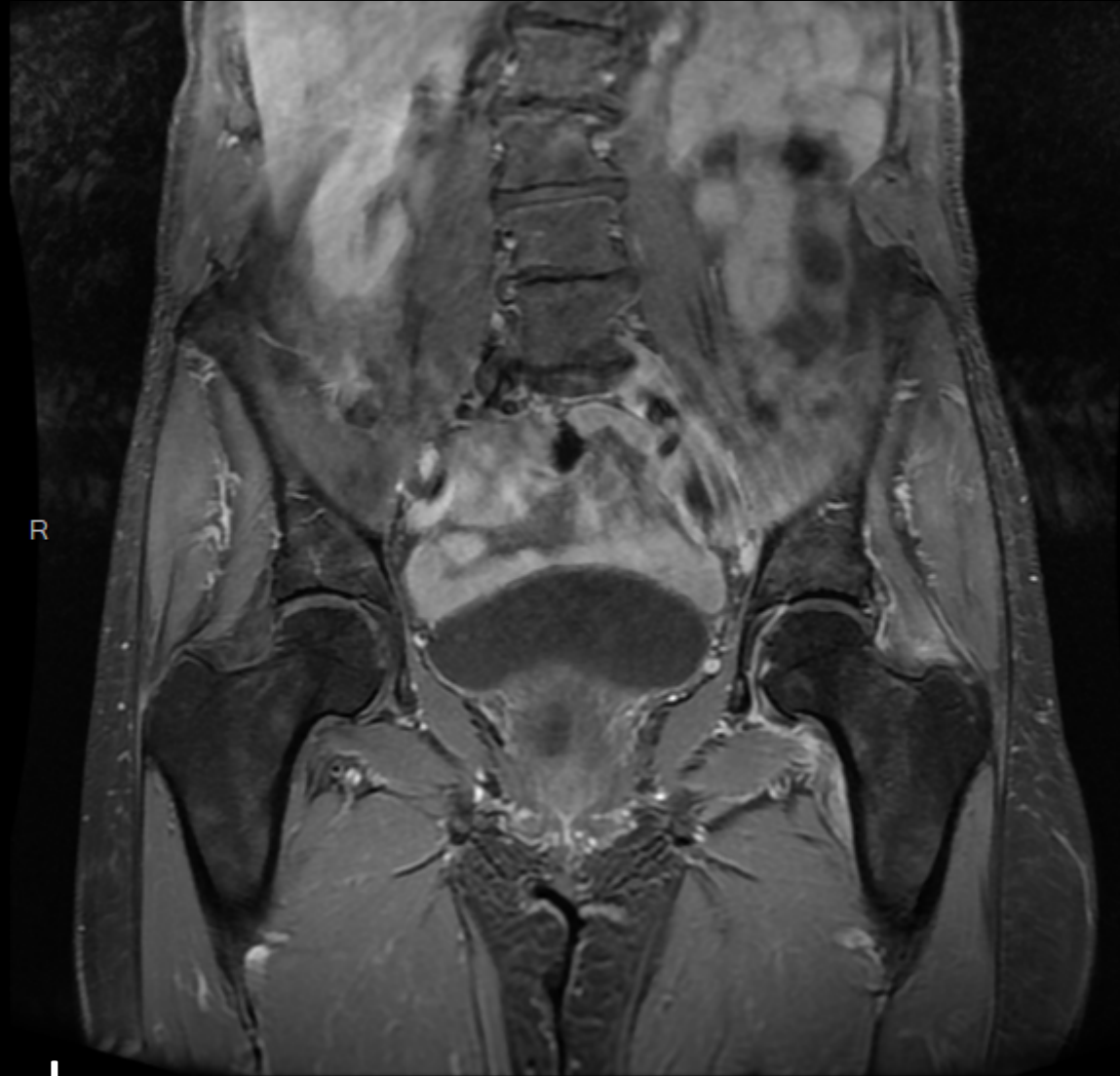
T1 fs Gado



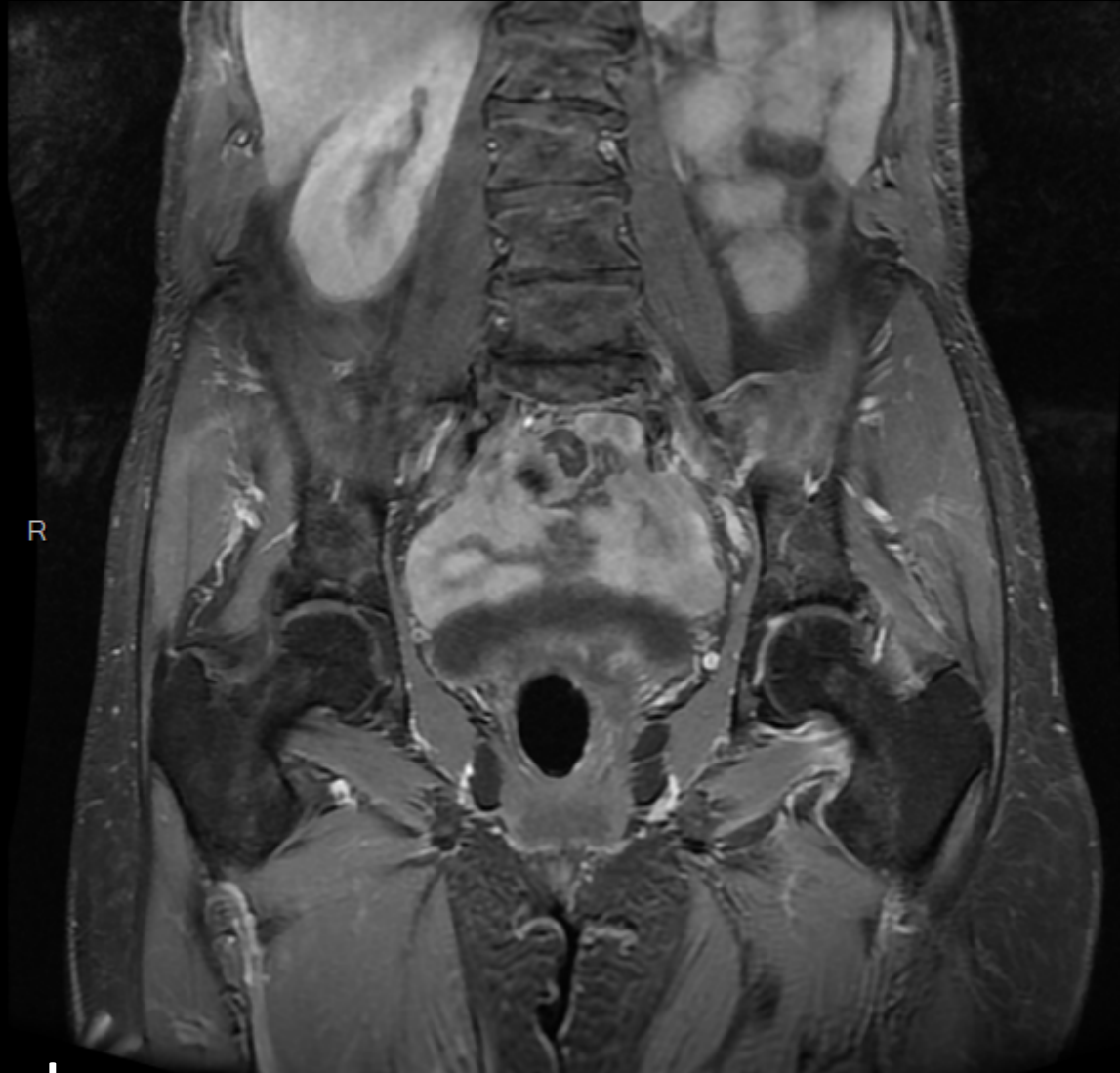
T1 fs Gado



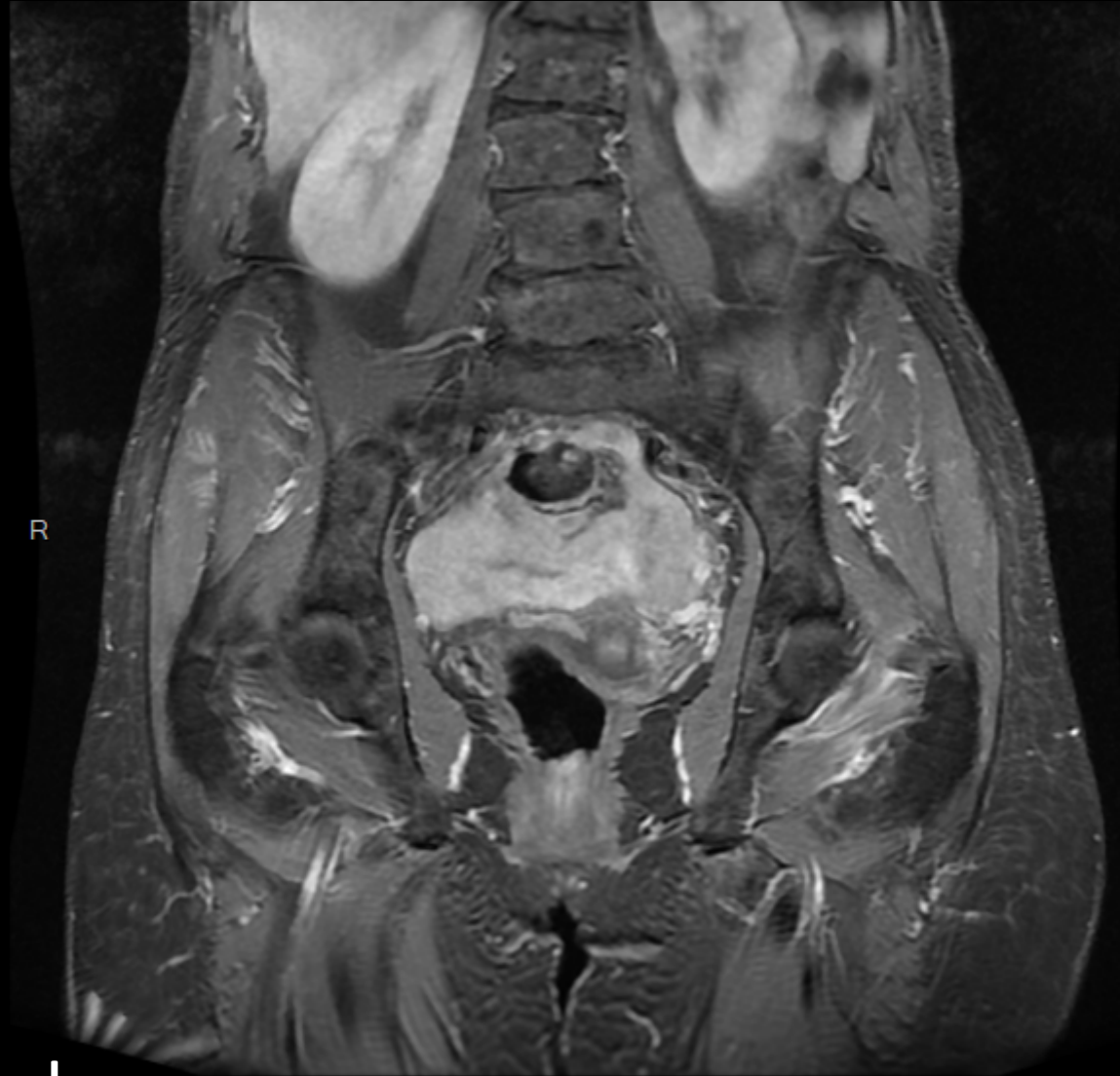
T1 fs Gado



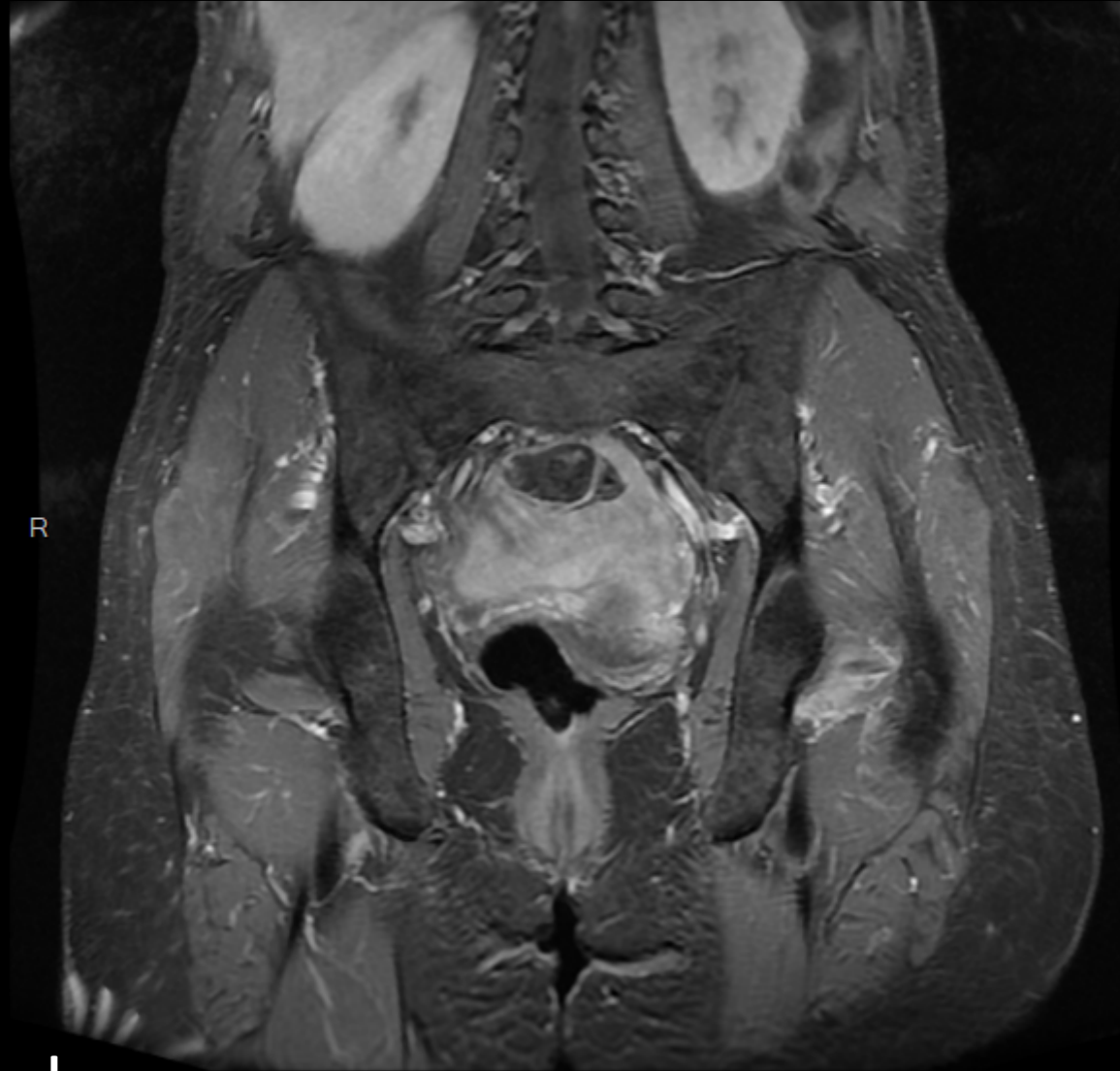
T1 fs Gado



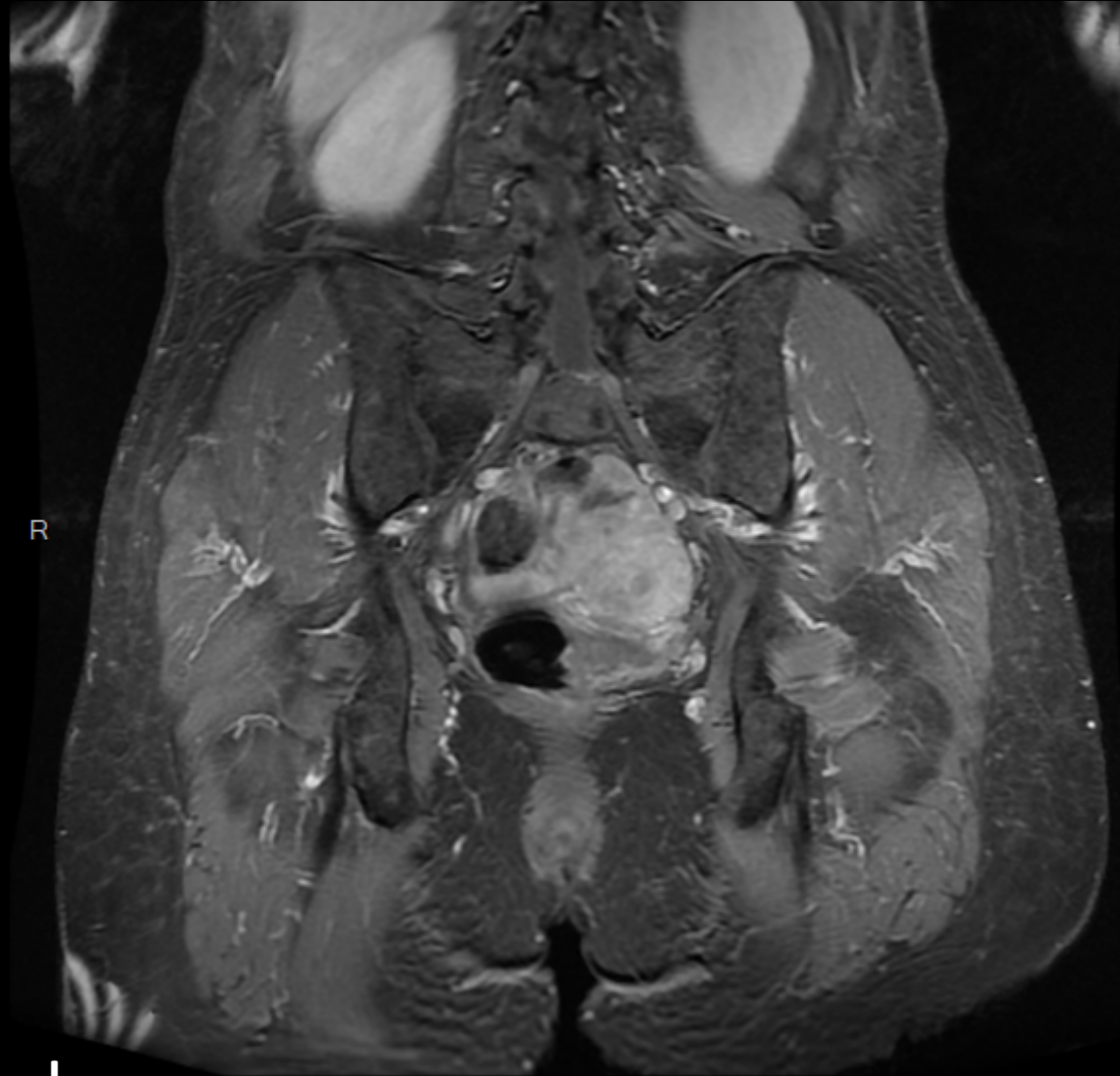
T1 fs Gado



T1 fs Gado



T1 fs Gado



T1 fs Gado



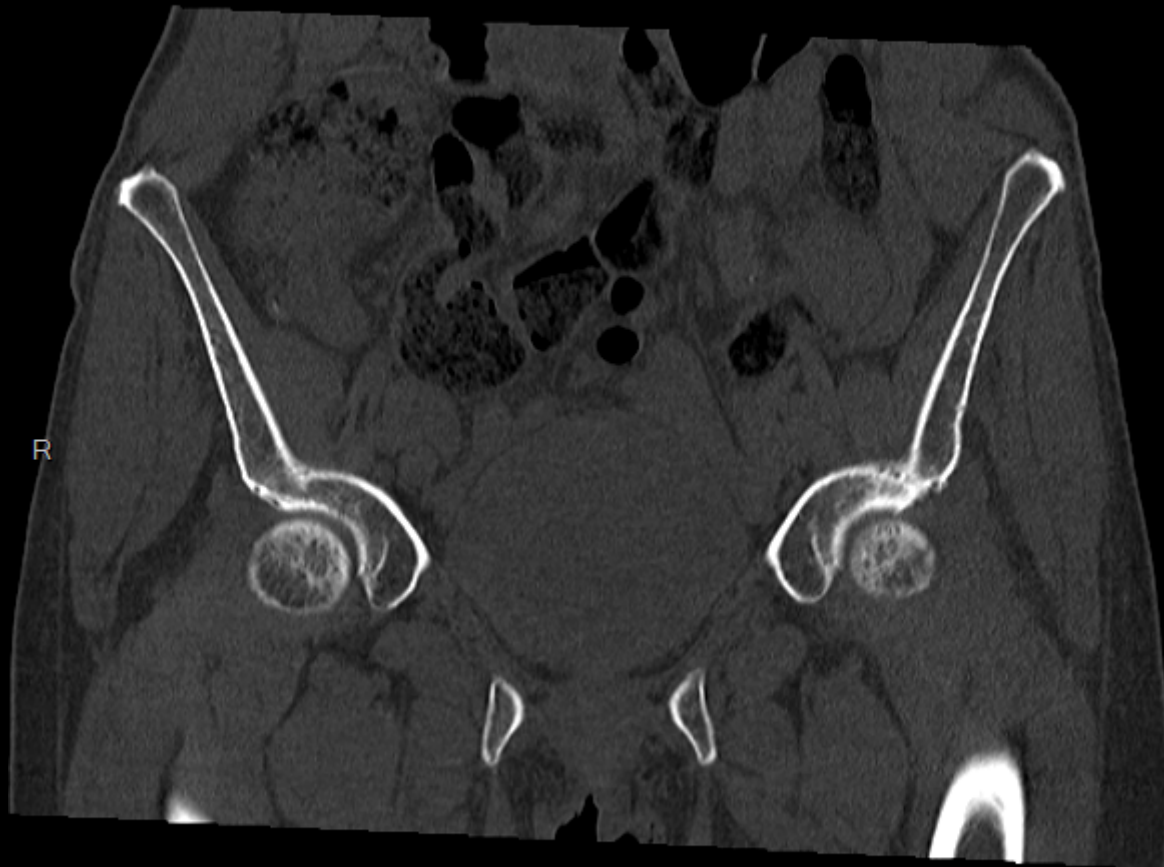
T1 fs Gado



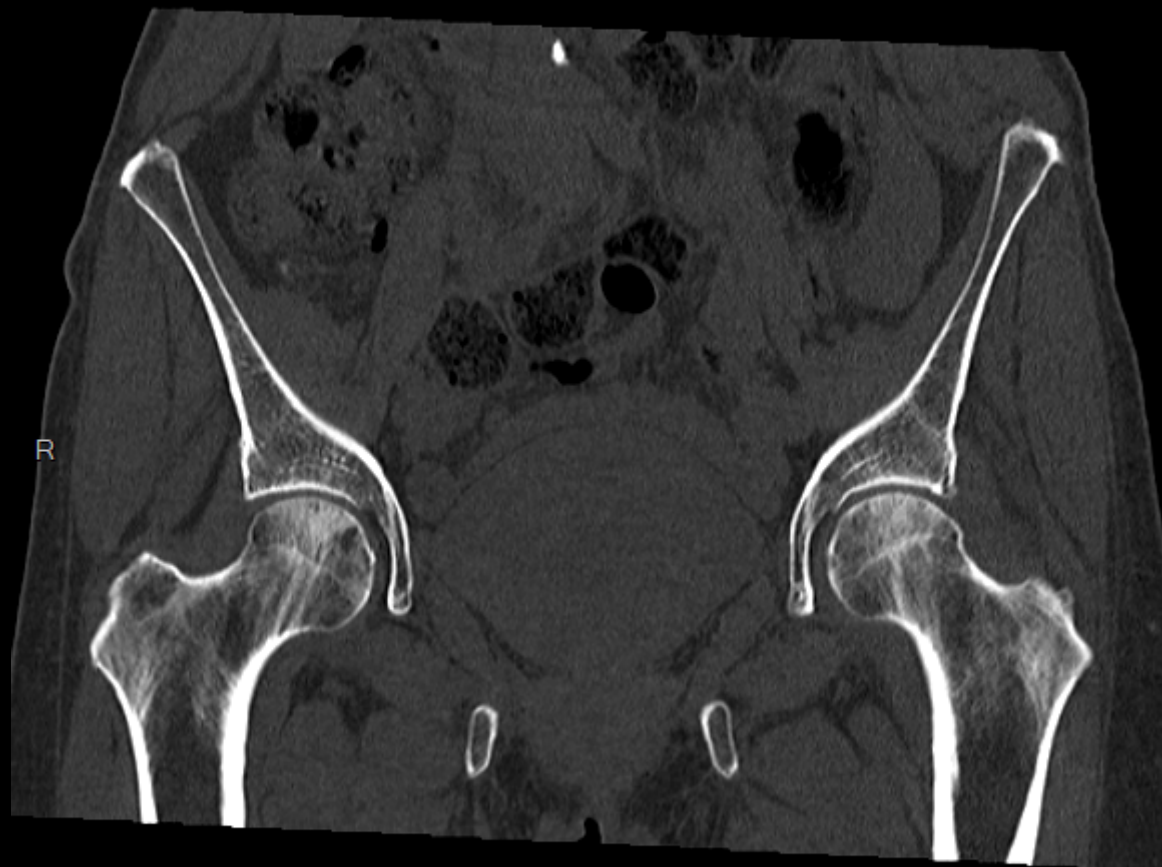
T1 fs Gado



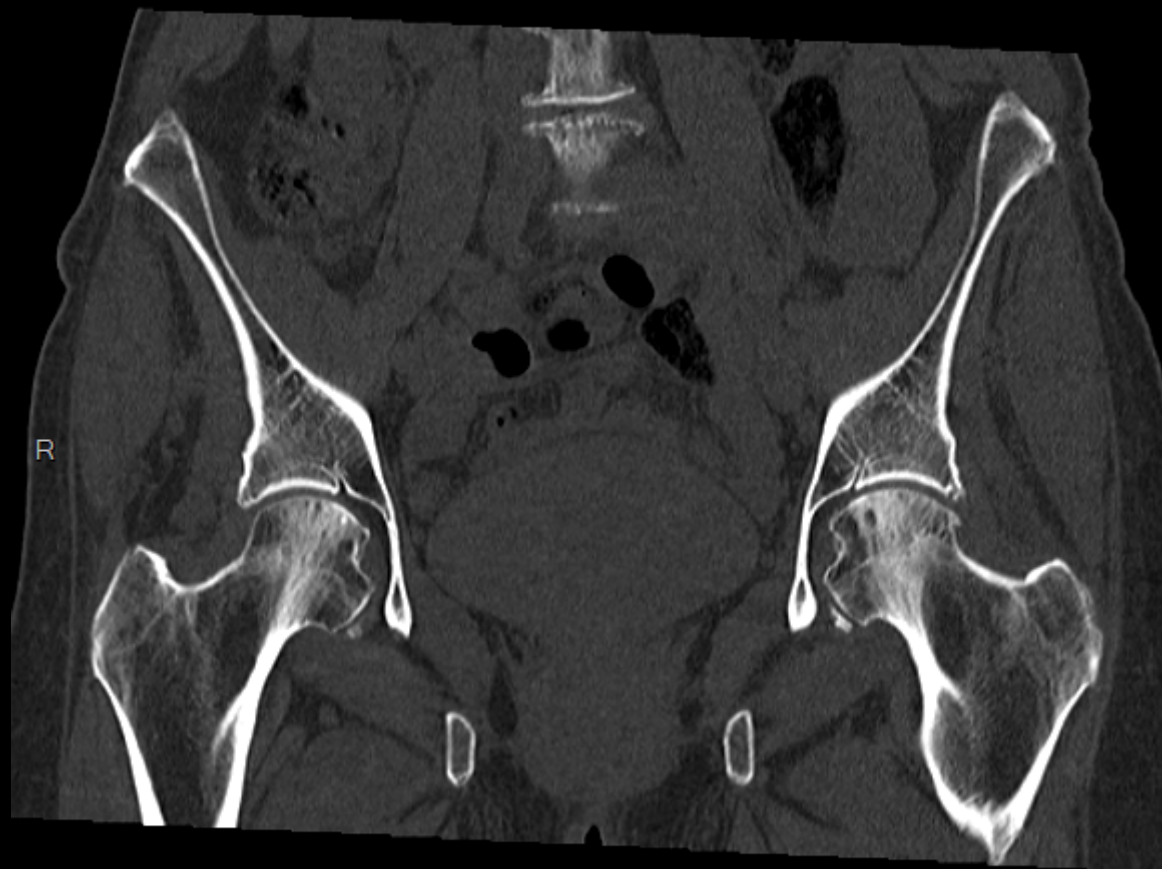
T1 fs Gado



TDM



TDM



TDM



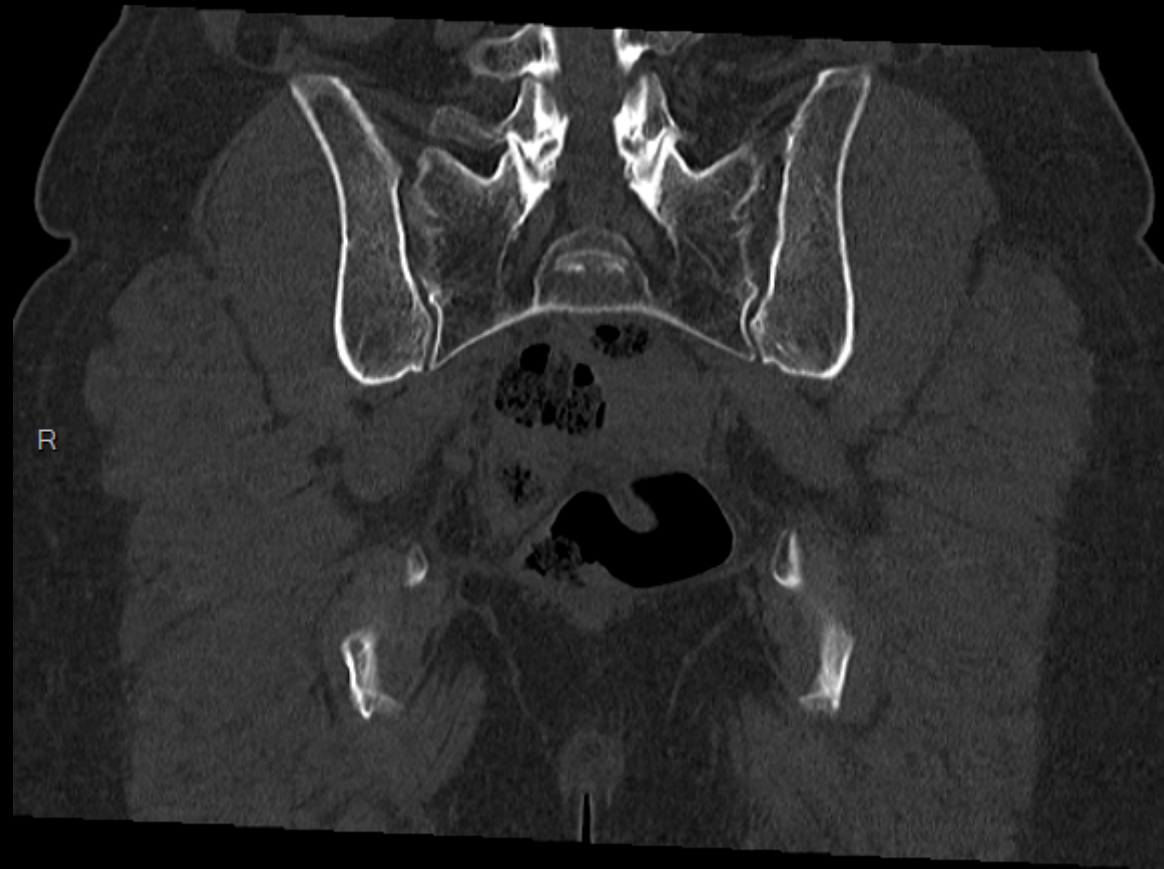
TDM



TDM



TDM



TDM



CAS 3

Votre diagnostic :

Une feuille google vous sera transmise ce vendredi 8 janvier afin d'exprimer votre proposition diagnostique.

Le dossier sera discuté lors du congrès.

Merci pour votre participation.