

Particularités de l'IRM de l'appareil locomoteur chez les enfants et les adolescents

Prof. Paolo Simoni , MD, PhD, MBA
Chef de Service de l'Imagerie médicale pédiatrique
Hôpital universitaire des enfants « Reine Fabiola »
27 octobre 2017



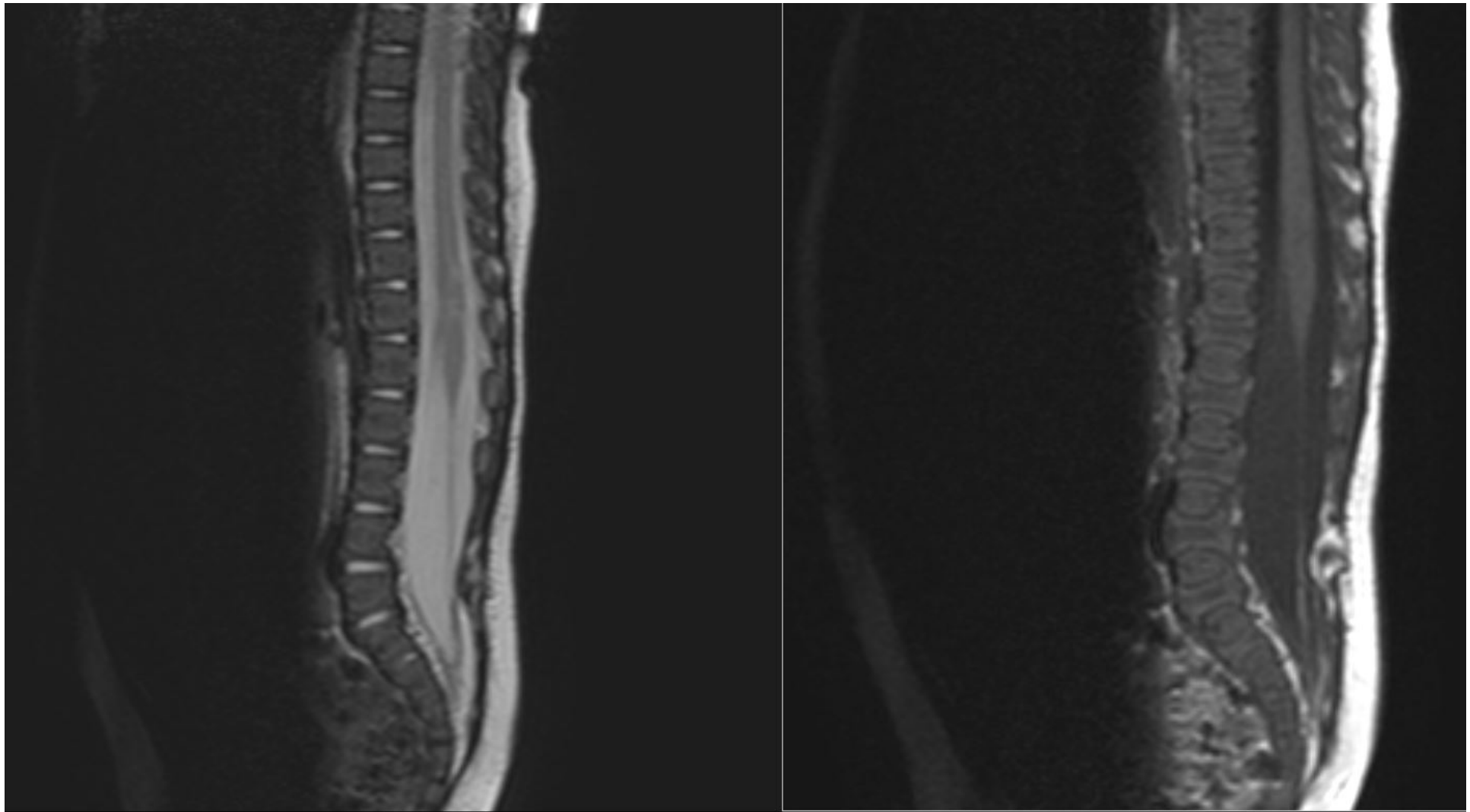
Hôpital Universitaire
des Enfants Reine Fabiola
Universitair **Kinderziekenhuis**
Koningin Fabiola



UNIVERSITÉ
LIBRE
DE BRUXELLES

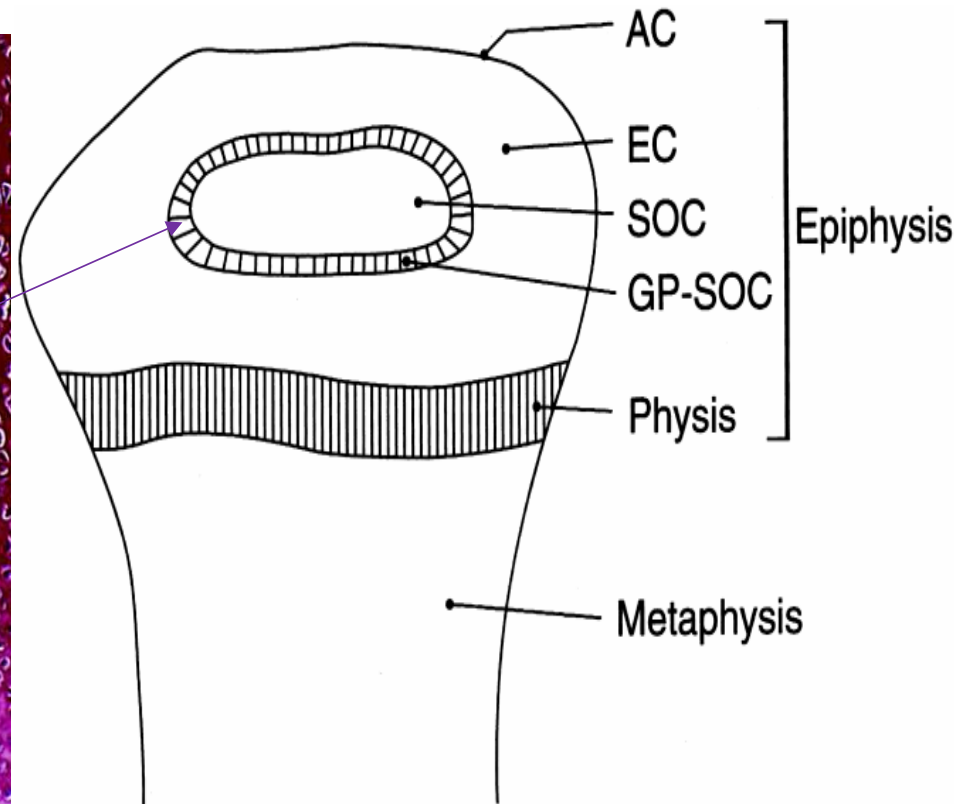
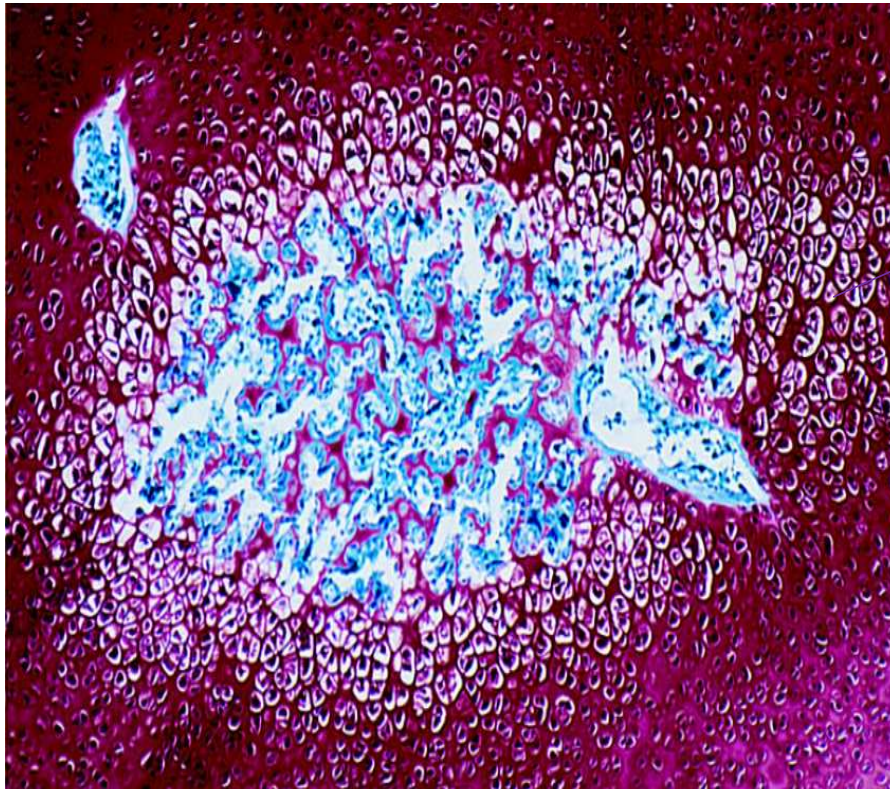


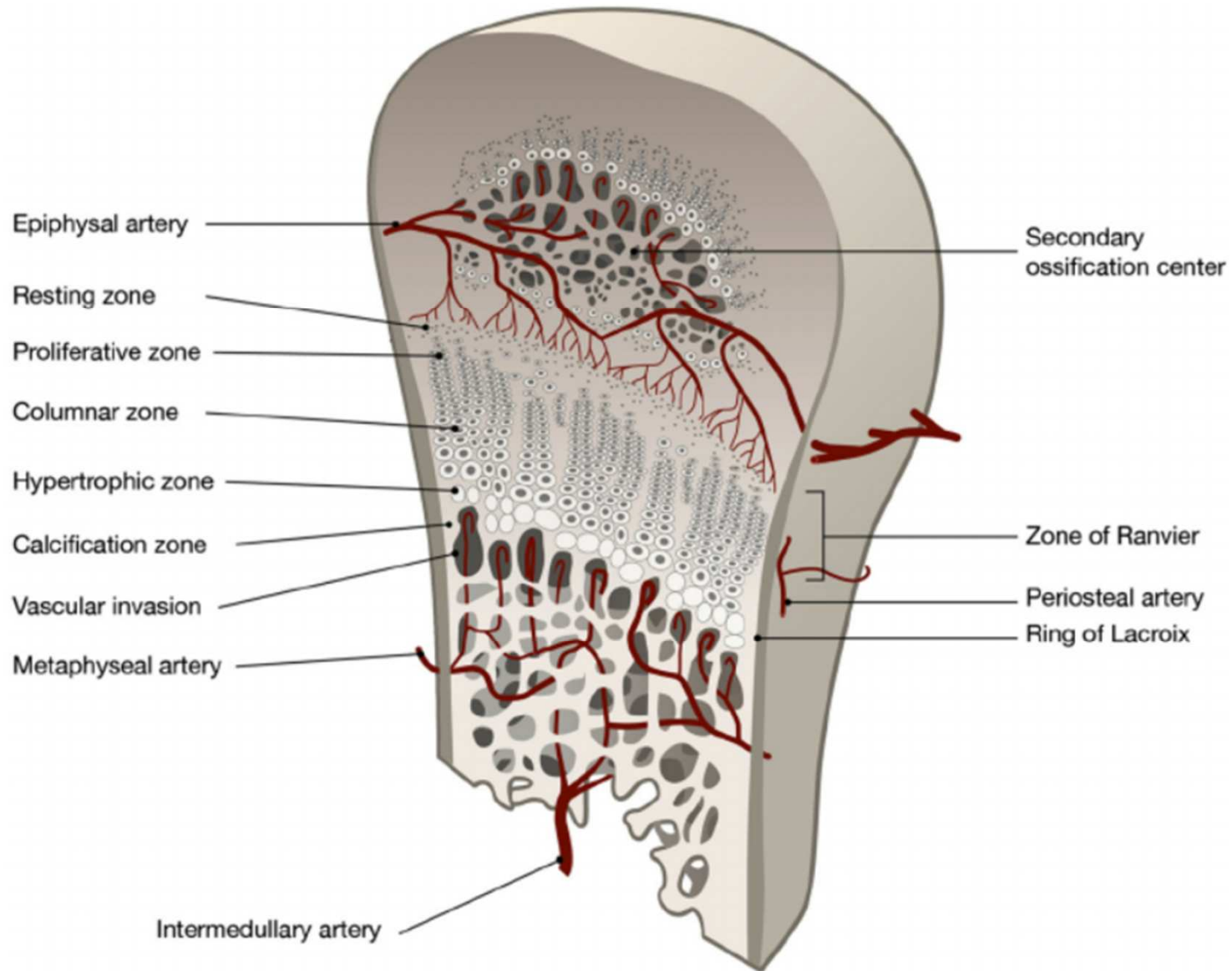
ET LE DISQUE.....?



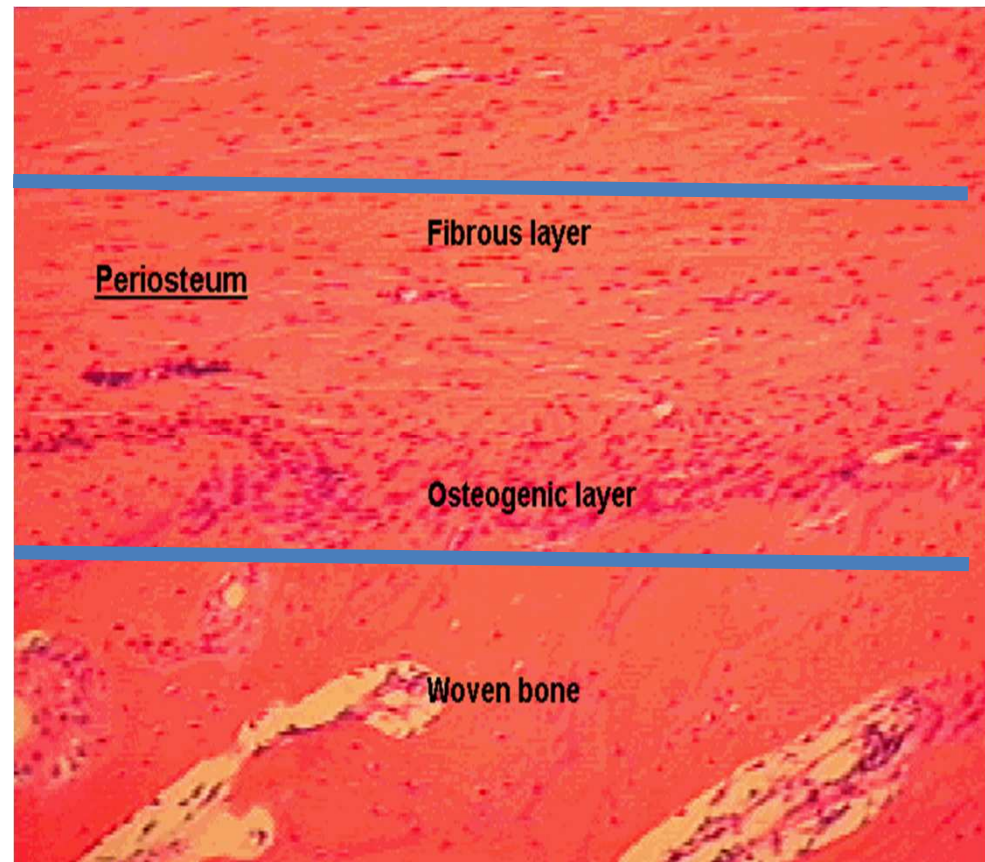
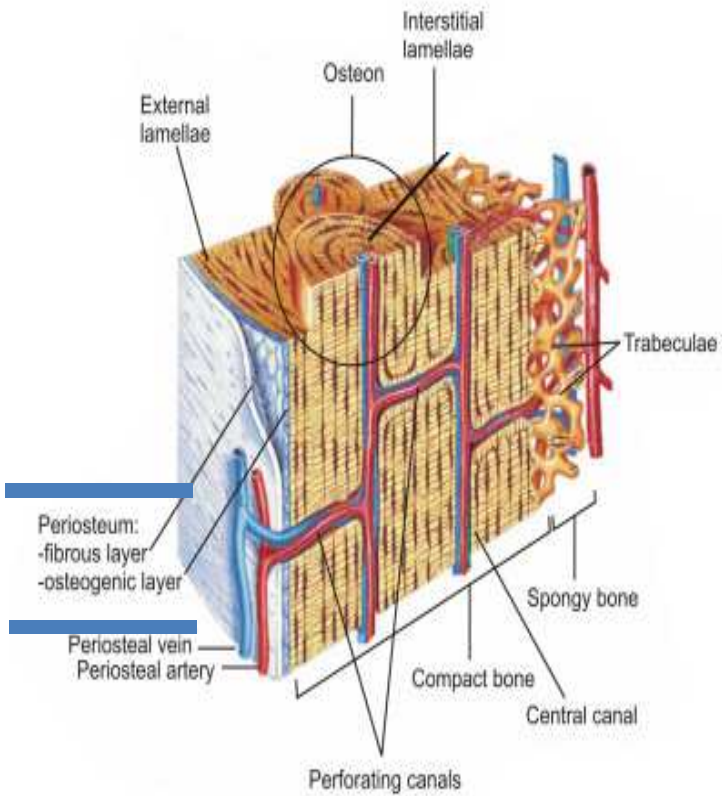


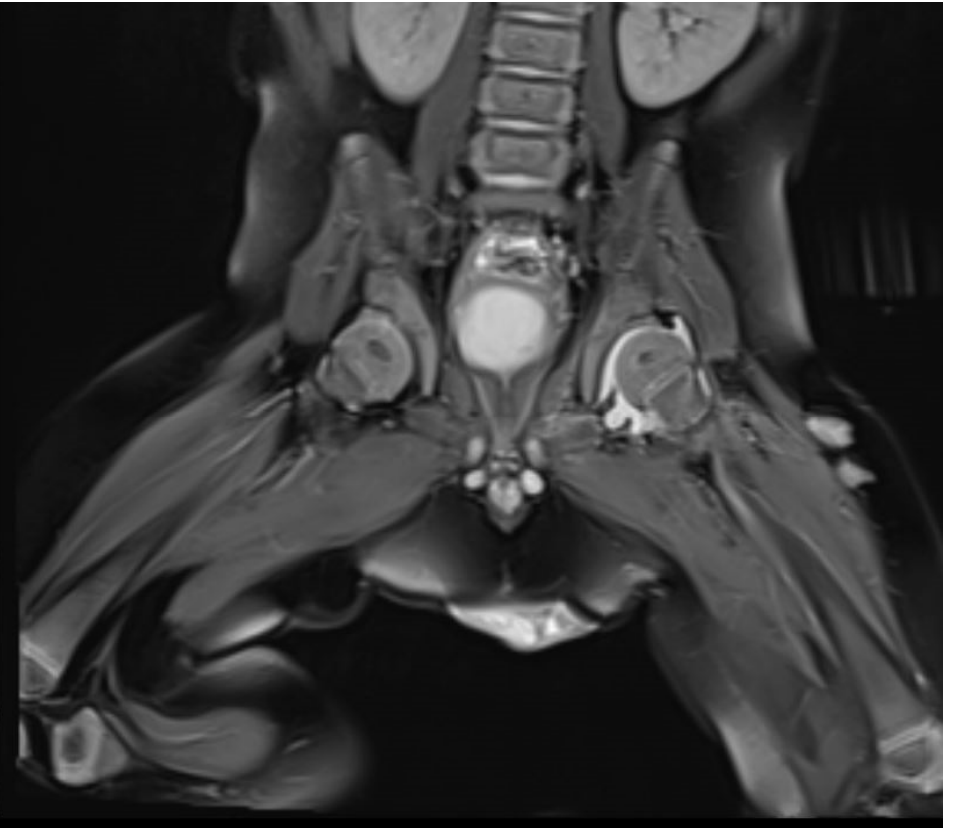
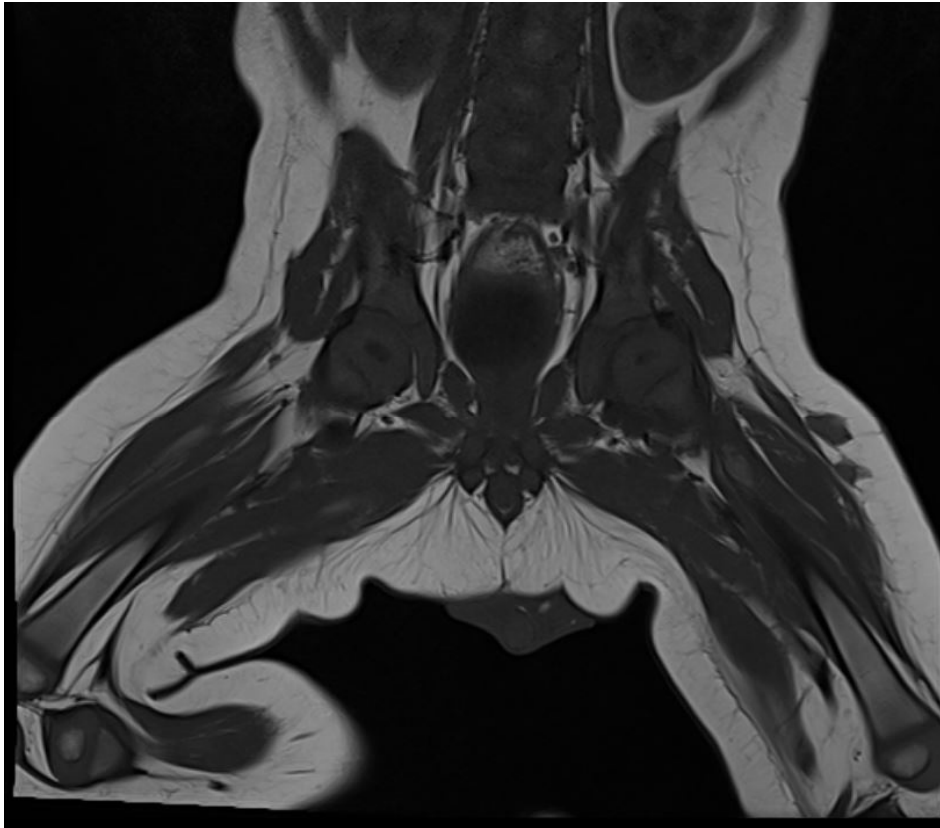
Secondary ossification center (SOC)



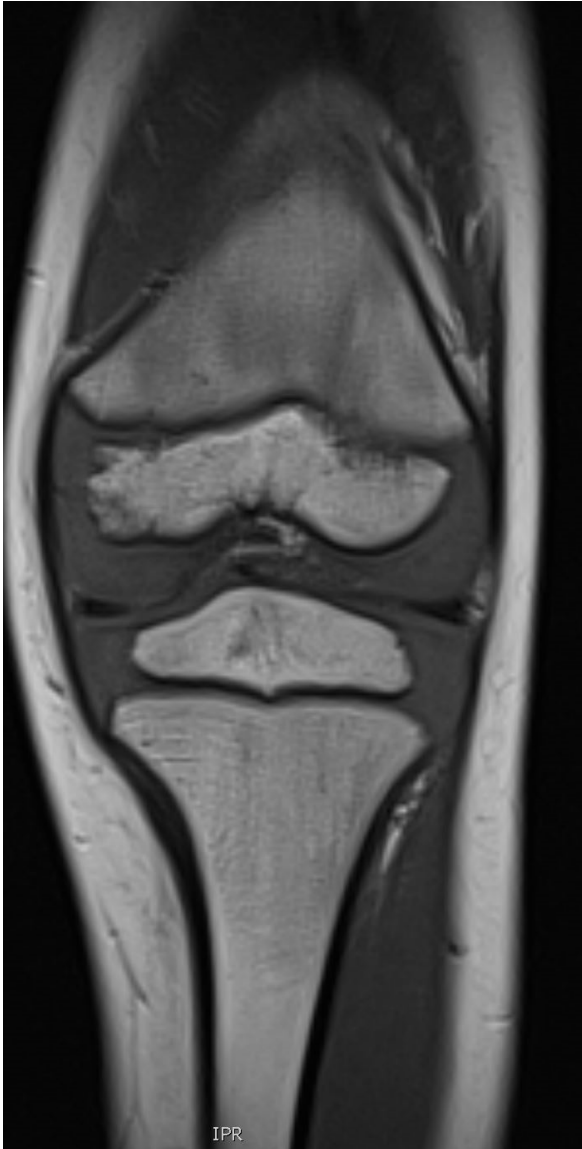


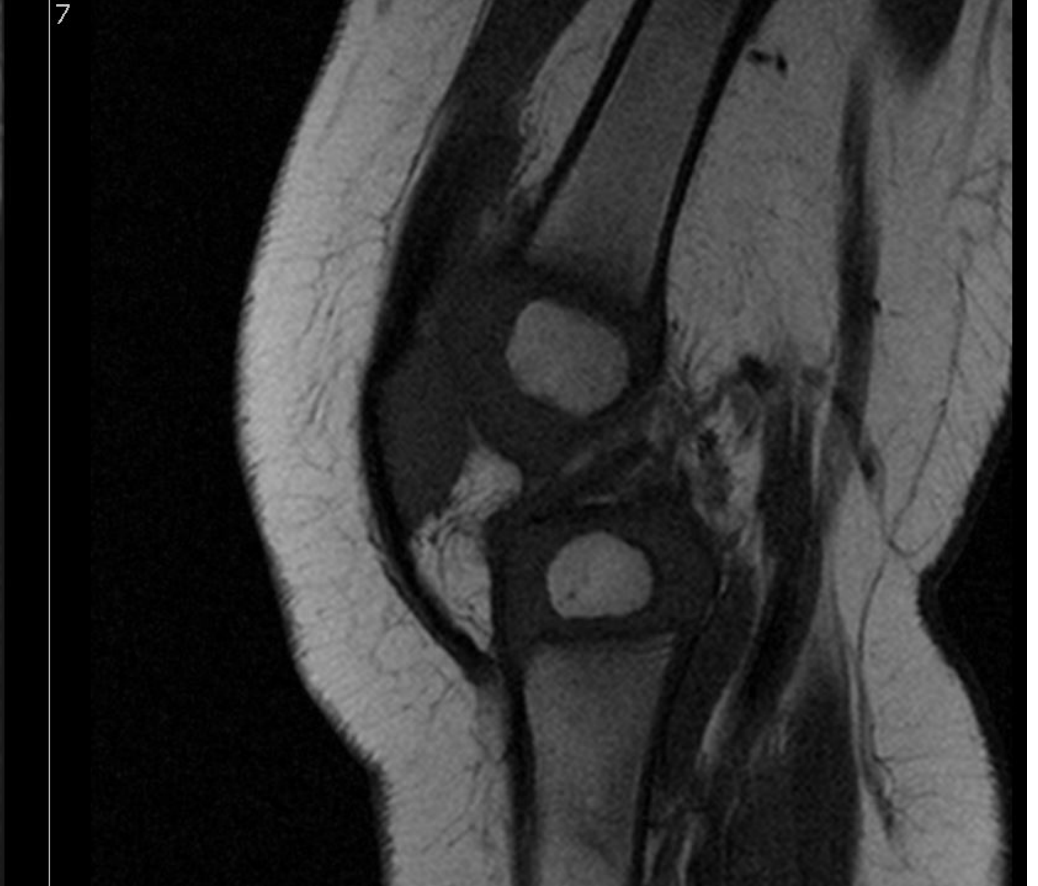




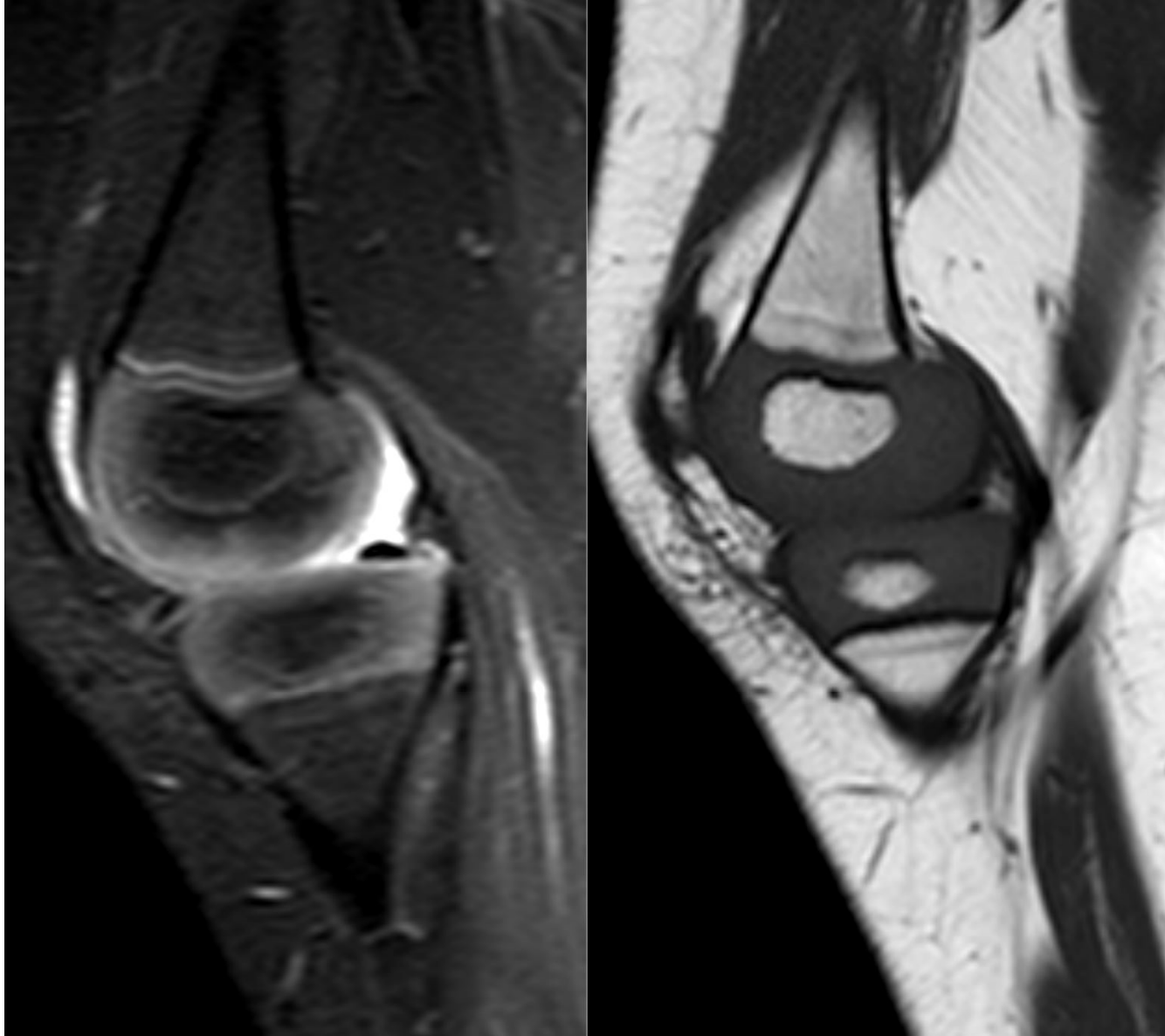




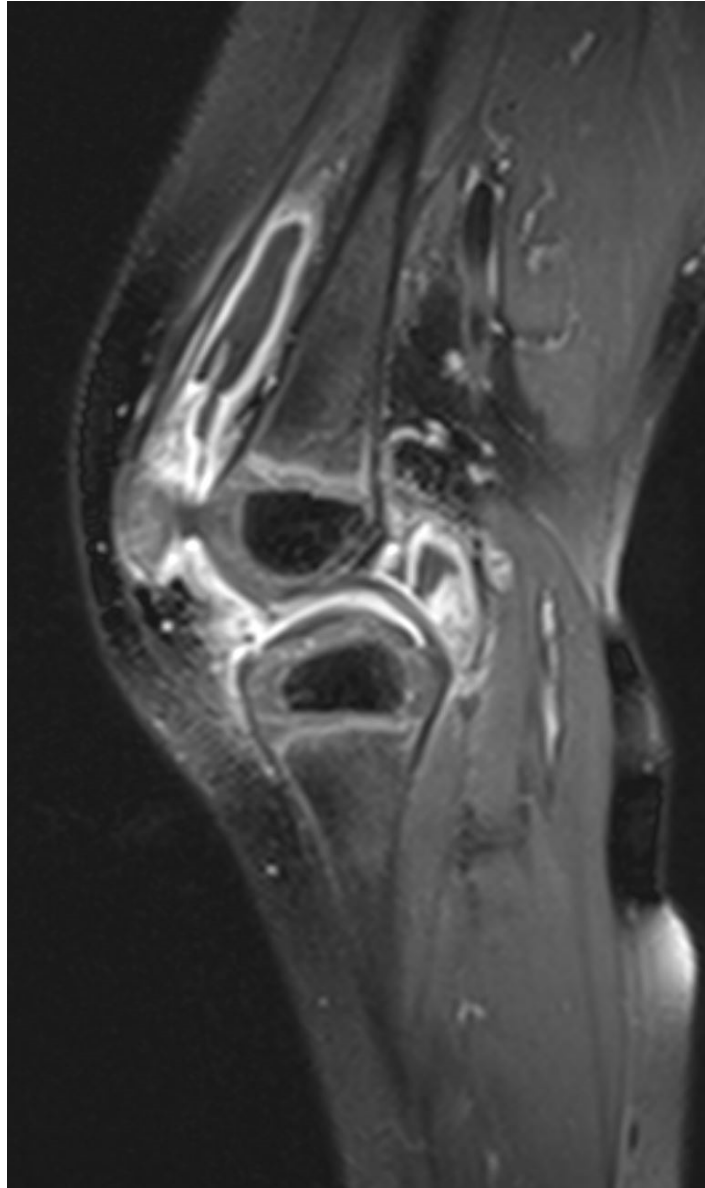
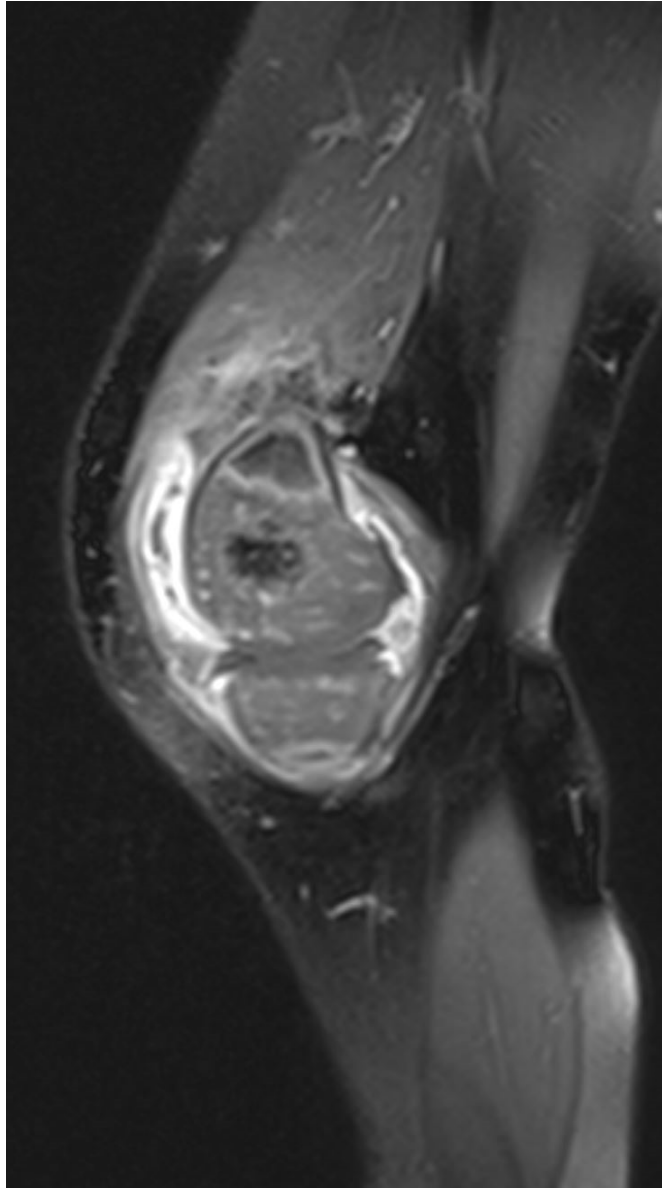




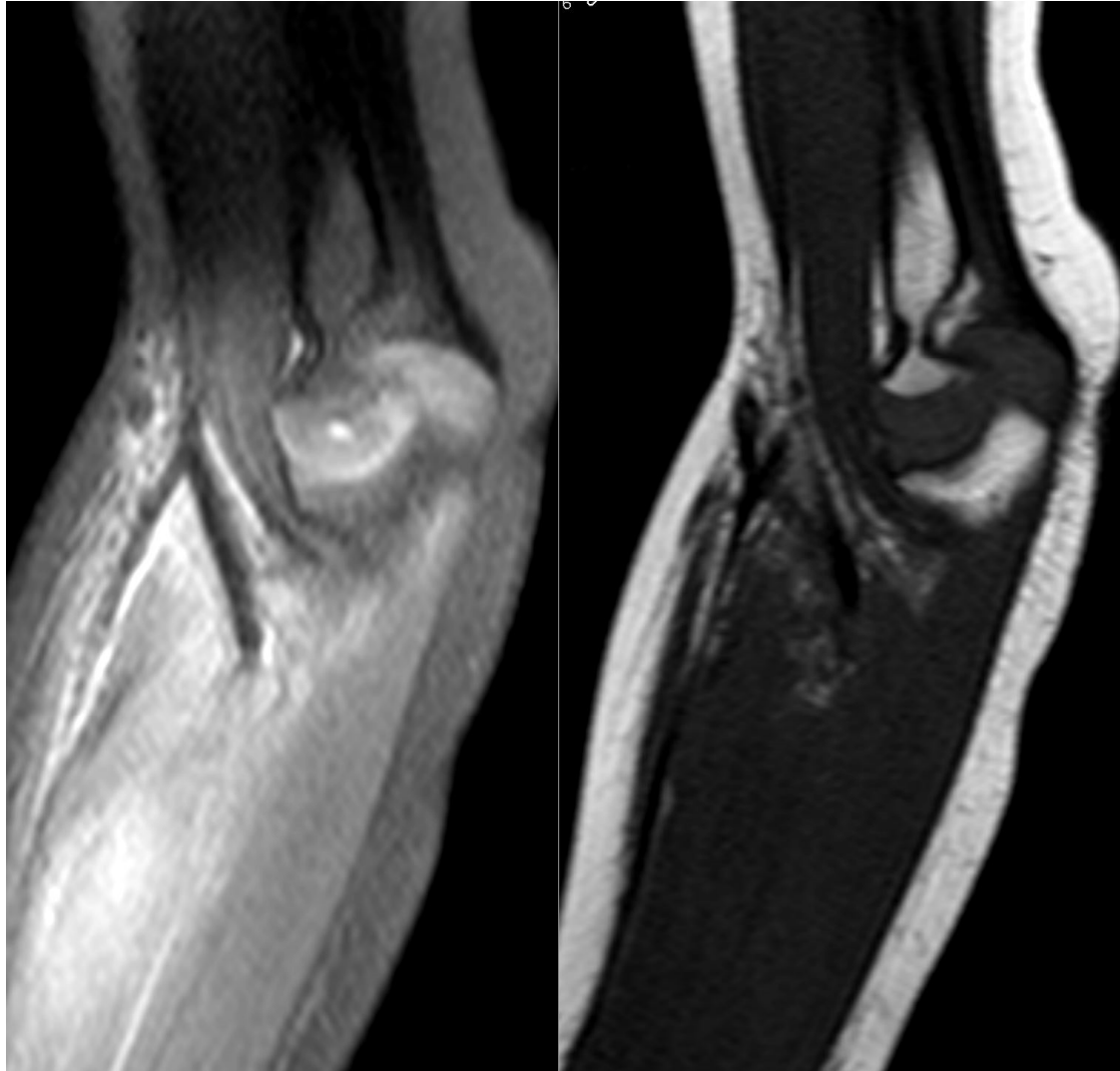
CARTILAGES



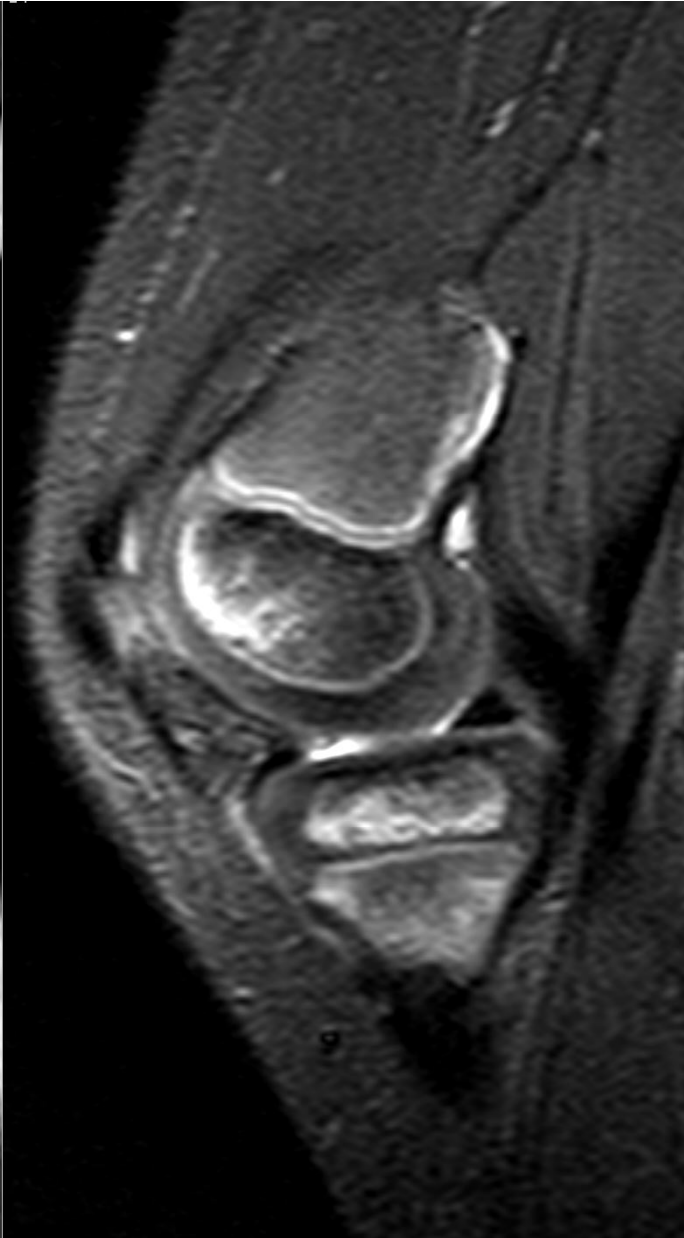
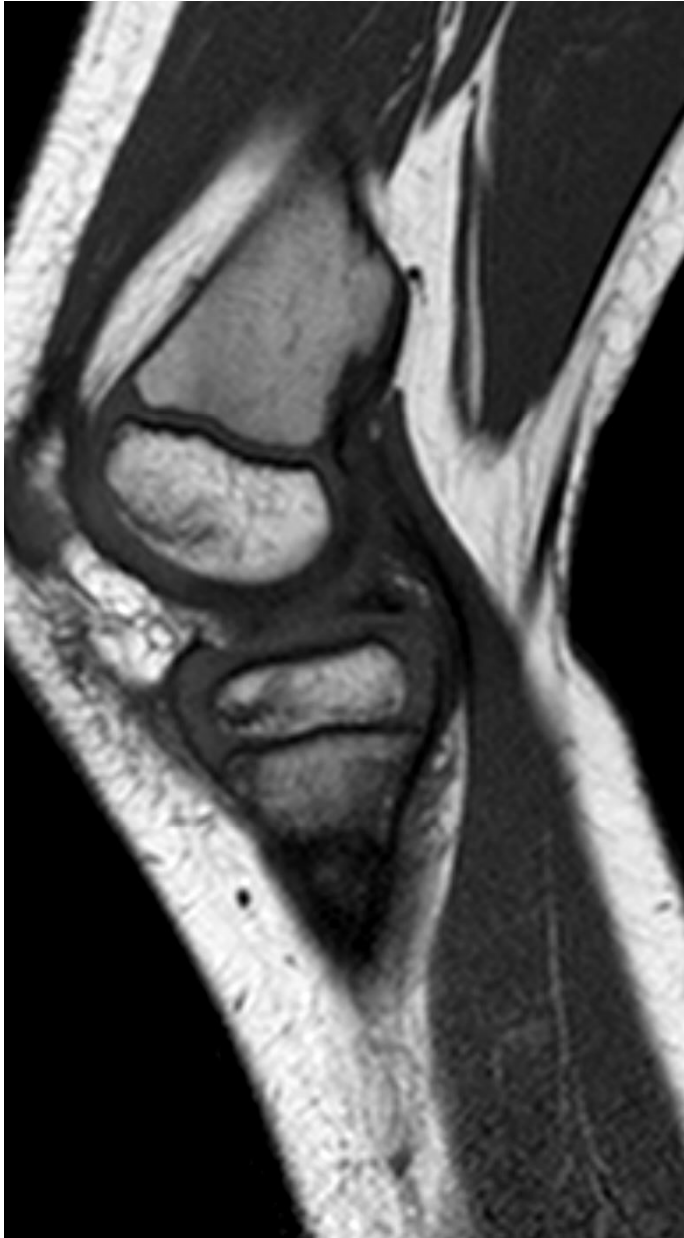
VASCULARISATION

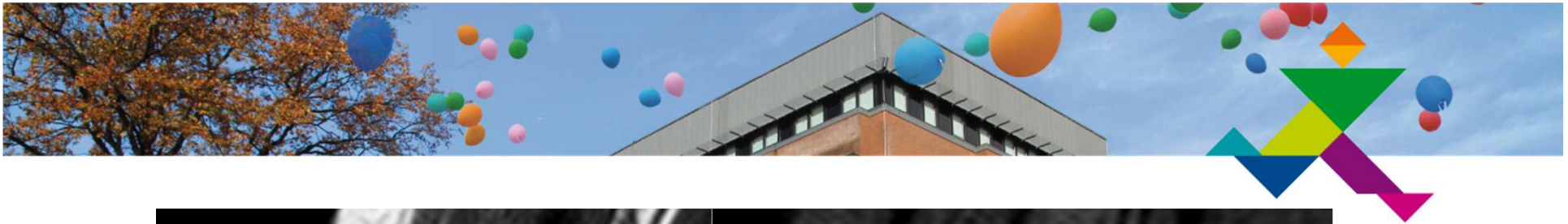




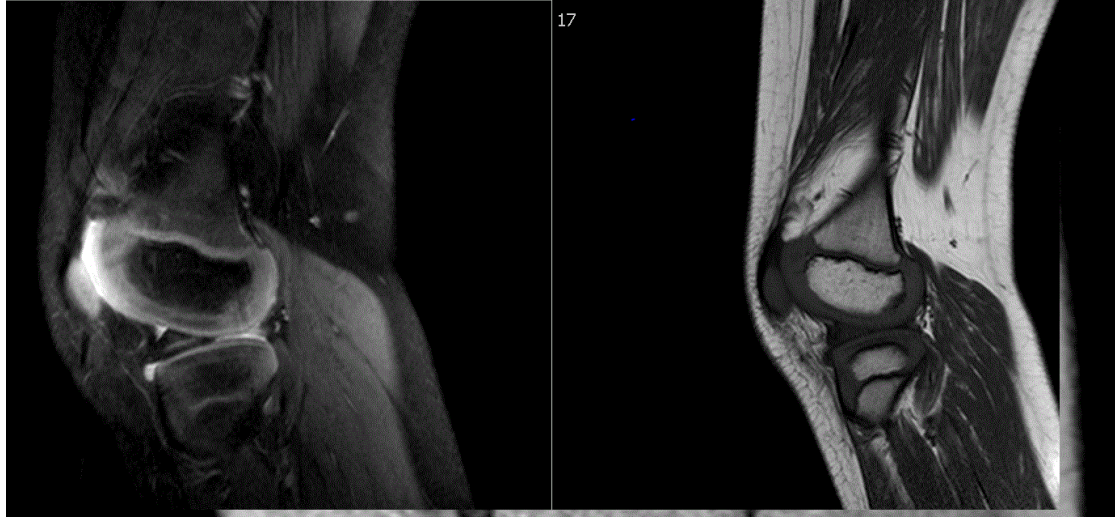
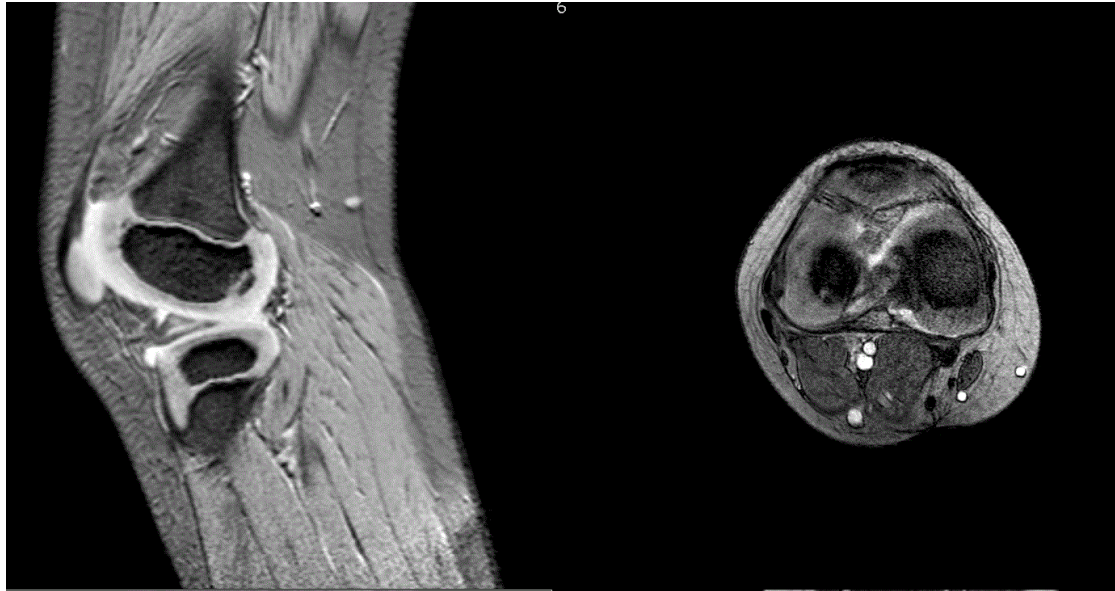






















Merci

paolo.simoni@huderf.be